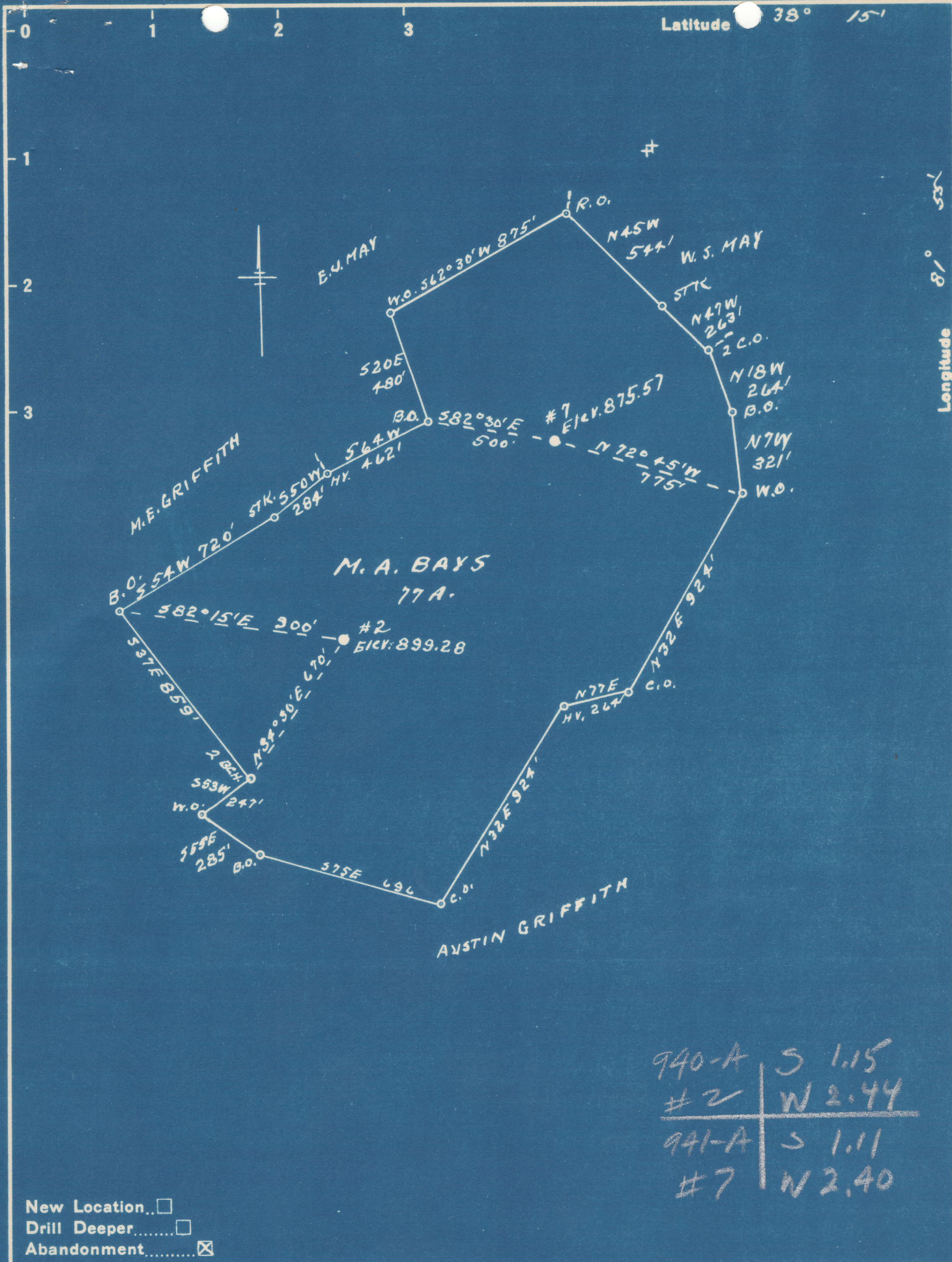


Latitude 38° 15'



940-A	S	1.15
#2	W	2.44
941-A	S	1.11
#7	W	2.40

New Location   
 Drill Deeper   
 Abandonment

Company G. S. H. SUPPLY CO.,  
 Address TULSA, OKLA.  
 Farm M.A. BAYS  
 Tract \_\_\_\_\_ Acres 77 Lease No. \_\_\_\_\_  
 Well (Farm) No. 2-7 Serial No. \_\_\_\_\_  
 Elevation (Spirit Level) SEE ABOVE  
 Quadrangle MADISON  
 County LINCOLN District DUVAL  
 Engineer R. F. Dye  
 Engineer's Registration No. 804  
 File No. \_\_\_\_\_ Drawing No. \_\_\_\_\_  
 Date 4-2-49 Scale 1" = 500'

STATE OF WEST VIRGINIA  
 DEPARTMENT OF MINES  
 OIL AND GAS DIVISION  
 CHARLESTON

WELL LOCATION MAP  
 FILE NO. LIN-940-A-#2  
LIN-941-A-#7

+ Denotes location of well on United States Topographic Maps, scale 1 to 62,500, latitude and longitude lines being represented by border lines as shown.  
 - Denotes one inch spaces on border line of original tracing.



Duval District, Lincoln County, W. Va.  
Big Creek Development Co.  
1500' N. E. of Yawkey.  
Elevation, 890'.

940A

	Top.	Bottom.	Thickness.
Soil and clay	0	12	12
Red rock	12	20	8
Slate	20	100	80
Sand	100	175	75
Slate	175	230	55
Sand	230	276	46
Coal	276	278	2
Sand, slate, and shell	278	844	566
Slate	844	894	50
Sand	894	994	100
Slate	994	1044	50
Salt Sand (hole full water, 1080')	1044	1635	591
Little Lime	1635	1681	46
Pencil Cave	1681	1685	4
Big Lime	1685	1870	185
Big Injun Sand (little gas at 1850')	1870	1930	60
Slate	1930	2010	80
Little Lime	2010	2160	150
Slate	2160	2365	205
Black slate	2365	2381	16
Berea Sand (oil)	2381	2402	21
Slate	2402	2405	3





STATE OF WEST VIRGINIA  
DEPARTMENT OF MINES  
OIL AND GAS DIVISION

1169

Ab 940 A

WELL RECORD

Permit No. \_\_\_\_\_ Oil or Gas Well \_\_\_\_\_ (KIND)

Company G. S. H. Supply Company  
Address c/o Hallie Pack, Hamlin, West Virginia  
Farm M. A. Wags Acres 77  
Location (waters) \_\_\_\_\_  
Well No. 2 Elev. 899.28  
District Duval County Lincoln  
The surface of tract is owned in fee by \_\_\_\_\_  
Address \_\_\_\_\_  
Mineral rights are owned by \_\_\_\_\_  
Address \_\_\_\_\_

Casing and Tubing	Used in Drilling	Left in Well	Packers
Size			Kind of Packer
16			
13			Size of
10			
8 1/4			Depth set
6 5/8	1700'		
5 3/16	344'		Perf. top
3			Perf. bottom
2	2396'		Perf. top
Liners Used			Perf. bottom

Drilling commenced \_\_\_\_\_  
Drilling completed \_\_\_\_\_  
Date Shot \_\_\_\_\_ From \_\_\_\_\_ To \_\_\_\_\_  
With \_\_\_\_\_  
Open Flow \_\_\_\_\_ /10ths Water in \_\_\_\_\_ Inch  
\_\_\_\_\_ /10ths Merc. in \_\_\_\_\_ Inch  
Volume \_\_\_\_\_ Cu. Ft.  
Rock Pressure \_\_\_\_\_ lbs. \_\_\_\_\_ hrs.  
Oil \_\_\_\_\_ bbls., 1st 24 hrs.  
Fresh water \_\_\_\_\_ feet \_\_\_\_\_ feet  
Salt water \_\_\_\_\_ feet \_\_\_\_\_ feet

CASING CEMENTED	SIZE	No. Ft.	Date
COAL WAS ENCOUNTERED AT		FEET	INCHES
	FEET	INCHES	FEET
	FEET	INCHES	FEET

Formation	Color	Hard or Soft	Top	Bottom	Oil, Gas or Water	Depth Found	Remarks
Salt Sand			1044'	1635'			
Little Lime			1635'	1681'			
Pencil Cave			1681'	1685'			
Big Lime			1685'	1870'			
Big Injun			1870'	1930'			
Brown Shale			2365'	2381'			
Berea			2381'	2402'			

