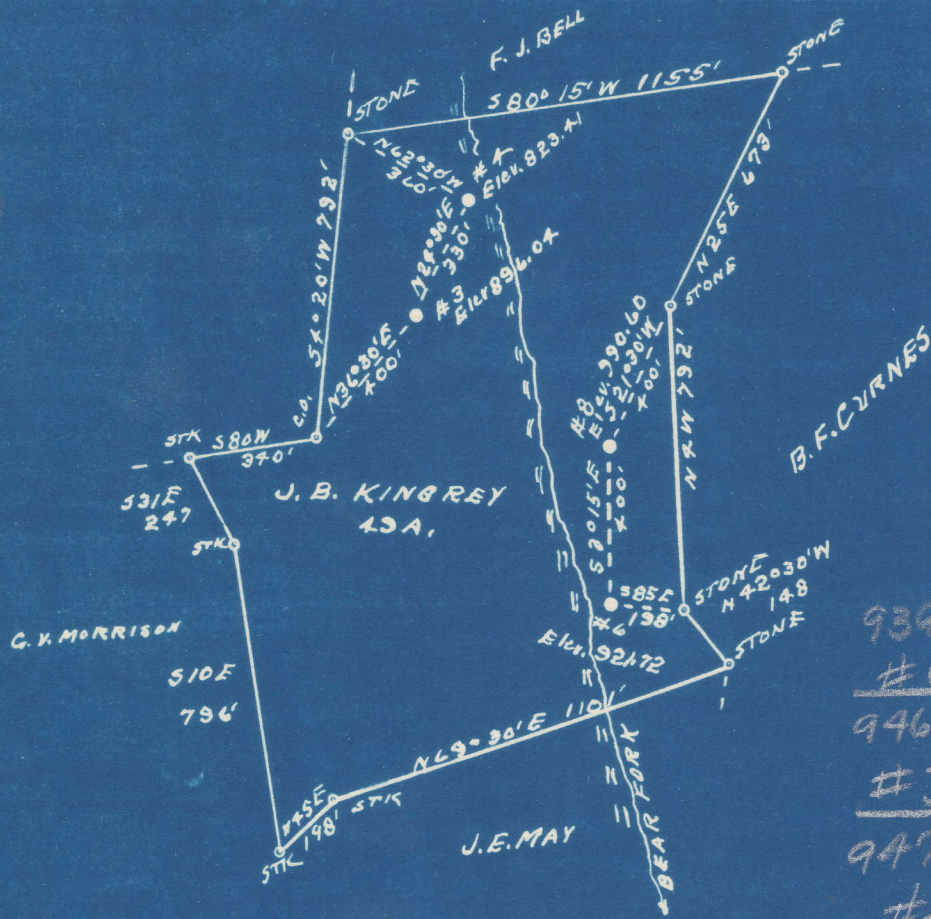


Latitude  $38^{\circ} 15'$

Longitude  $81^{\circ} 55'$



939-A	S 0.16
#6	W 1.66
946-A	S 0.17
#3	W 1.71
947-A	S 0.10
#4	W 1.71
948-A	S 0.11
#8	W 1.62

New Location..   
 Drill Deeper.....   
 Abandonment.....

Company G.S.H. SUPPLY CO.  
 Address TULSA, OKLA  
 Farm J.B. KINGREY  
 Tract \_\_\_\_\_ Acres 49 Lease No. \_\_\_\_\_  
 Well (Farm) No. 9-4-6-B Serial No. \_\_\_\_\_  
 Elevation (Spirit Level) SEE ABOVE  
 Quadrangle MADISON  
 County LINCOLN District DUVAL  
 Engineer R.F. Dye  
 Engineer's Registration No. 804 NW  
 File No. \_\_\_\_\_ Drawing No. \_\_\_\_\_  
 Date 4-24-49 Scale 1" = 500'

STATE OF WEST VIRGINIA  
 DEPARTMENT OF MINES  
 OIL AND GAS DIVISION  
 CHARLESTON

**WELL LOCATION MAP**

FILE NO. LIN-939-A-#6  
LIN-948-A-#8 LIN-946-A-#3  
LIN-947-A-#4

+ Denotes location of well on United States Topographic Maps, scale 1 to 62,500, latitude and longitude lines being represented by border lines as shown.

- Denotes one inch spaces on border line of original tracing.

Duval District, Lincoln County, W. Va.  
 Big Creek Development Co.  
 1 mile northwest of Yawkey.  
 Elevation, 815'.

946A  
 (see plot 939A)

	Top.	Bottom.	Thickness.
Red rock	20	- 40	20
Slate	40	- 80	40
Sand	80	- 140	60
Slate	140	- 180	40
Sand	180	- 200	20
Shells	200	- 240	40
Sand	240	- 290	50
Sand	290	- 460	170
Unrecorded	460	- 480	20
Lime shells	480	- 530	50
Sand	530	- 560	30
Shale	560	- 590	30
Sand	590	- 685	95
Shale	685	- 785	100
Sand	785	- 820	35
Shale	820	- 1020	200
Lime	1020	- 1040	20
Shale	1040	- 1070	30
Salt Sand (hole full water at 1100')	1070	- 1645	575
Slate break	1645	- 1655	10
Black lime	1655	- 1695	40
Pencil Cave	1695	- 1705	10
Big Lime	1705	- 1864	159
Big Injun Sand	1864	- 1920	56
Slate	1920	- 2030	110
Berea shale	2030	- 2375	345
Brown shale	2375	- 2385	10
Berea Sand (oil)	2385	- 2408	23



(L1478) 1161

STATE OF WEST VIRGINIA  
DEPARTMENT OF MINES  
OIL AND GAS DIVISION

Permit No. 946-A *duplet 939A*

WELL RECORD

Oil or Gas Well \_\_\_\_\_  
(KIND)

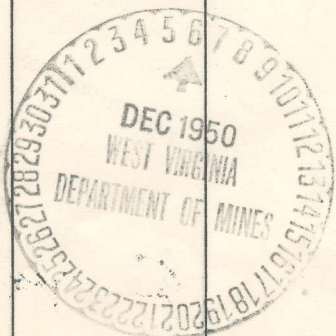
Company G. S. H. Supply Company  
Address c/o Hallie Pack, Hamlin, West Virginia  
Farm J. B. Kingrey Acres 49  
Location (waters) \_\_\_\_\_  
Well No. 3 Elev. 8960 ft  
District Duval County Lincoln  
The surface of tract is owned in fee by \_\_\_\_\_  
Address \_\_\_\_\_  
Mineral rights are owned by \_\_\_\_\_  
Address \_\_\_\_\_

Casing and Tubing	Used in Drilling	Left in Well	Packers
Size			Kind of Packer
16			
13			Size of
10			Depth set
8 1/4			Perf. top
6 5/8	1710'		Perf. bottom
5 3/16			Perf. top
3			Perf. bottom
2	2402'		
Liners Used			

Drilling commenced \_\_\_\_\_  
Drilling completed \_\_\_\_\_  
Date Shot \_\_\_\_\_ From \_\_\_\_\_ To \_\_\_\_\_  
With \_\_\_\_\_  
Open Flow \_\_\_\_\_ /10ths Water in \_\_\_\_\_ Inch  
\_\_\_\_\_ /10ths Merc. in \_\_\_\_\_ Inch  
Volume \_\_\_\_\_ Cu. Ft.  
Rock Pressure \_\_\_\_\_ lbs. \_\_\_\_\_ hrs.  
Oil \_\_\_\_\_ bbls., 1st 24 hrs.  
Fresh water \_\_\_\_\_ feet \_\_\_\_\_ feet  
Salt water \_\_\_\_\_ feet \_\_\_\_\_ feet

CASING CEMENTED \_\_\_\_\_ SIZE \_\_\_\_\_ No. Ft. \_\_\_\_\_ Date \_\_\_\_\_  
COAL WAS ENCOUNTERED AT \_\_\_\_\_ FEET \_\_\_\_\_ INCHES  
\_\_\_\_\_ FEET \_\_\_\_\_ INCHES FEET \_\_\_\_\_ INCHES  
\_\_\_\_\_ FEET \_\_\_\_\_ INCHES FEET \_\_\_\_\_ INCHES

Formation	Color	Hard or Soft	Top	Bottom	Oil, Gas or Water	Depth Found	Remarks
Salt Sand			1070	1645			
Little Lime			1655	1695			
Pencil Calc			1695	1705			
Big Lime			1705	1864			
Big Injun			1864	1920			
Brown Shale			2375	2385			
Berea			2385	2408			



(Over)

FEB 23 1951