

1

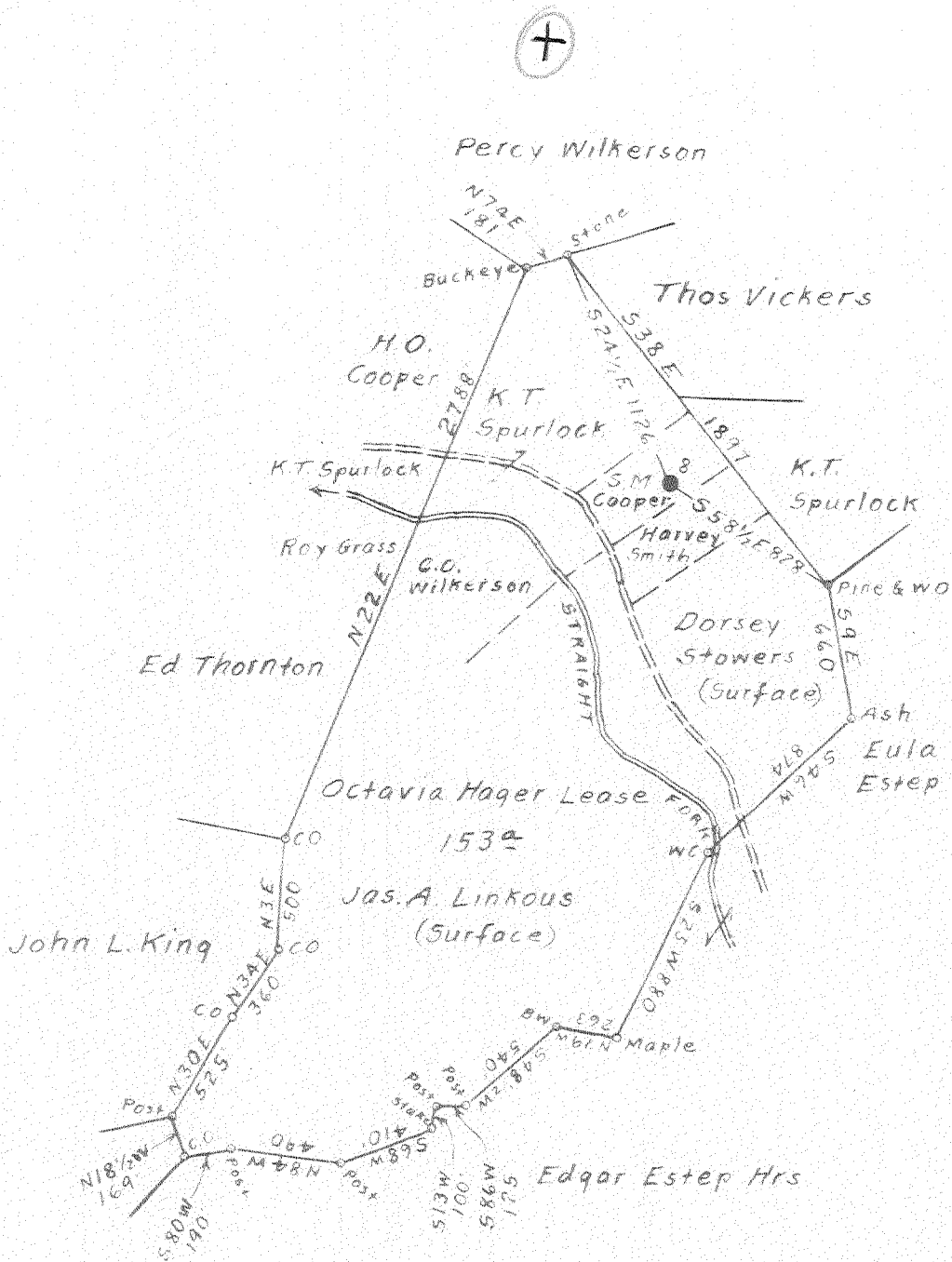
2

3

Latitude 38 15

Longitude 81 55

Scale 1" = 800 Feet



Surface owned by S.M. Cooper.  
 Address: Mr. S.M. Cooper, Griffithsville, W. Va  
 No Coal.

3.51 W  
 0.98

New Location  
 Drill Deeper  
 Abandonment

X

FEB 11 1953

On 800' Map No. 125 W 69 S 582 W 77-78.

Company Bradford Supply Co.

Address Bradford, Pa.

Farm Octavia Hager

Tract \_\_\_\_\_ Acres 153 Lease No. \_\_\_\_\_

Well (Farm) No. 8 Serial No. \_\_\_\_\_

Elevation (Spirit Level) Floor - 802.02  
Ground - 798.22

Quadrangle Madison

County Lincoln District Duval

Engineer Eleworth Haines

Engineer's Registration No. 2221

File No. \_\_\_\_\_ Drawing No. \_\_\_\_\_

Date Jan. 10th, 1951 Scale 1" = 800 Feet

STATE OF WEST VIRGINIA  
 DEPARTMENT OF MINES  
 OIL AND GAS DIVISION  
 CHARLESTON

### WELL LOCATION MAP

FILE NO. LIN 967-A

+ Denotes location of well on United States Topographic Maps, scale 1 to 62,500, latitude and longitude lines being represented by border lines as shown.

- Denotes one inch spaces on border line of original tracing.