

Latitude 38° 15'

Longitude 82° 05'

W. B. PORTER

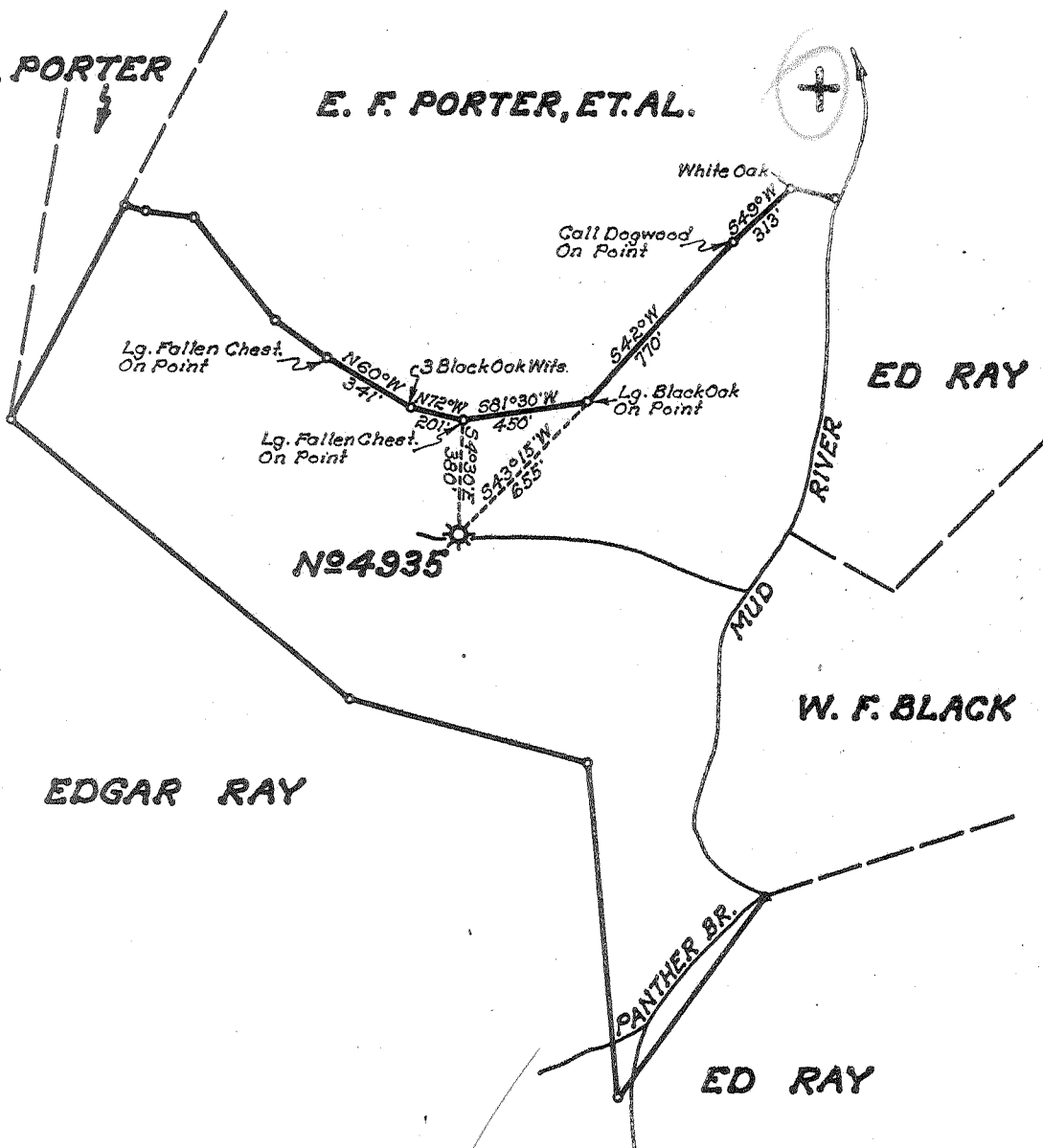
E. F. PORTER, ET. AL.

ED RAY

W. F. BLACK

EDGAR RAY

ED RAY



New Location..
 Drill Deeper.....
 Abandonment.....

✓ JUL 5 1955

1.83 W
2.67

| | | | |
|-----------------------------|---------------------|-------------|----------|
| Company | UNITED FUEL GAS CO. | | |
| Address | CHARLESTON, W. VA. | | |
| Farm | ALBERT E. DICK | | |
| Tract | Acres | Lease No. | 85 43379 |
| Well (Farm) No. | 1 | Serial No. | 4935 |
| Elevation (Spirit Level) | 711.0' | | |
| Quadrangle | MIDKIFF | | |
| County | LINCOLN | District | CARROLL |
| Engineer | Seybert R. Stowell | | |
| Engineer's Registration No. | 2529 | | |
| File No. | 34-39 | Drawing No. | |
| Date | 5-18-55 | Scale | 1"=660' |

STATE OF WEST VIRGINIA
 DEPARTMENT OF MINES
 OIL AND GAS DIVISION
 CHARLESTON

WELL LOCATION MAP
 FILE NO. LIN-1167-A

+ Denotes location of well on United States Topographic Maps, scale 1 to 62,500, latitude and longitude lines being represented by border lines as shown.

- Denotes one inch spaces on border line of original tracing.

ALBERT E. DICK No. 1 (4935) - U. F. G. Co. - LIN-1167-A