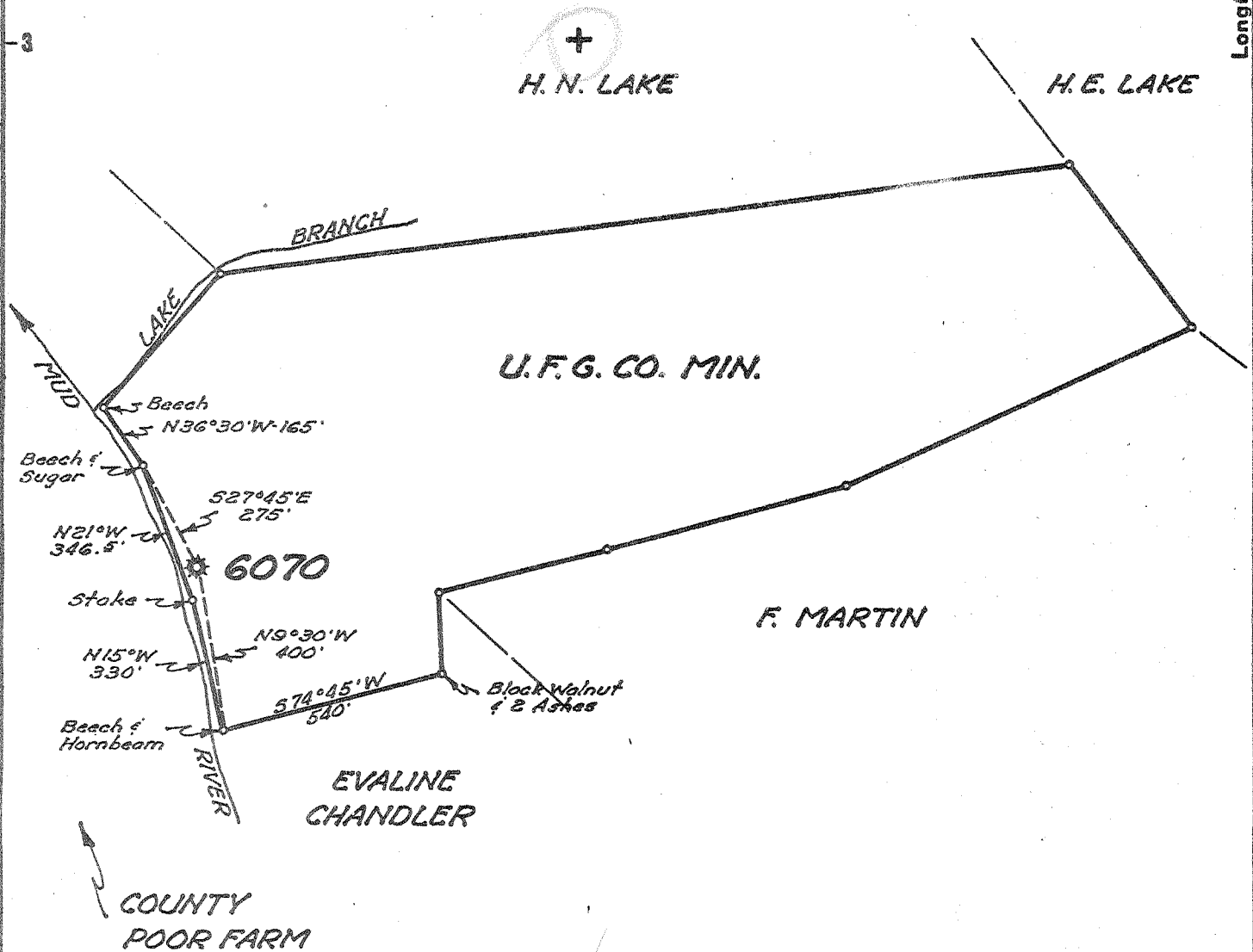


Latitude 38° 20'

Longitude 82° 00'



- New Location..
- Drill Deeper.....
- Abandonment.....

✓ JUL 5 1955

Handwritten notes: 4/1/55, 3.13, and a signature.

Company UNITED FUEL GAS CO.  
 Address CHARLESTON, W. VA.  
 Farm U.F.G. CO. MINERAL  
 Tract 25 Acres 421.44 Lease No. NO REF  
 Well (Farm) No. \_\_\_\_\_ Serial No. 6070  
 Elevation (Spirit Level) 631.70'  
 Quadrangle MILTON  
 County LINCOLN District CARROLL  
 Engineer Paul E. Roach  
 Engineer's Registration No. 669  
 File No. 36-55 Drawing No. \_\_\_\_\_  
 Date 5-25-55 Scale 1"=400'

STATE OF WEST VIRGINIA  
 DEPARTMENT OF MINES  
 OIL AND GAS DIVISION  
 CHARLESTON

WELL LOCATION MAP  
 FILE NO. LIN-1177-A

+ Denotes location of well on United States Topographic Maps, scale 1 to 62,500, latitude and longitude lines being represented by border lines as shown.

- Denotes one inch spaces on border line of original tracing.

U. F. G. Co. (Min, Tr. 25) No. 6070 - U. F. G. Co. -

LIN-1177-A



STATE OF WEST VIRGINIA  
DEPARTMENT OF MINES  
OIL AND GAS DIVISION

1489

WELL RECORD

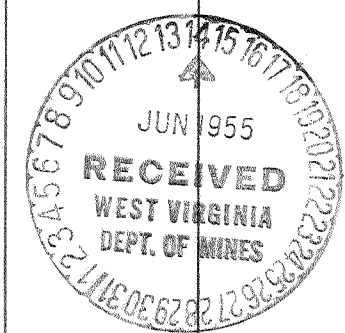
Oil or Gas Well Gas  
(KIND)

Quadrangle Milton  
Permit No. 177A  
Company UNITED FUEL GAS CO.  
Address P.O. Box 1273, Charleston 25, W. Va.  
Farm U. F. G. Co. Min. Tr. #25 Acres 421.44  
Location (waters) Mud River  
Well No. 6070 Elev. 631.70'  
District Carroll County Lincoln  
The surface of tract is owned in fee by \_\_\_\_\_  
Address \_\_\_\_\_  
Mineral rights are owned by United Fuel Gas Co.  
Address Charleston, W. Va.  
Drilling commenced 12-1919  
Drilling completed 1-17-1920  
Date Shot \_\_\_\_\_ From \_\_\_\_\_ To \_\_\_\_\_  
With \_\_\_\_\_  
Open Flow \_\_\_\_\_ /10ths Water in \_\_\_\_\_ Inch  
7 /10ths Merc. in 2 Inch  
Volume 445,000 Cu. Ft.  
Rock Pressure 457 lbs. \_\_\_\_\_ hrs.  
Oil \_\_\_\_\_ bbls., 1st 24 hrs.  
Fresh water 80 feet 300' feet  
Salt water \_\_\_\_\_ feet \_\_\_\_\_ feet

Casing and Tubing	Used in Drilling	Left in Well	Packers
Size			Kind of Packer
16			
13			
10		60'	Size of
8 1/2			
6 5/8		1562'	Depth set
5 3/16		277'	
3		1712'	Perf. top
2			Perf. bottom
Liners Used			Perf. top
			Perf. bottom

CASING CEMENTED \_\_\_\_\_ SIZE \_\_\_\_\_ No. Ft. \_\_\_\_\_ Date \_\_\_\_\_  
COAL WAS ENCOUNTERED AT \_\_\_\_\_ FEET \_\_\_\_\_ INCHES  
\_\_\_\_\_ FEET \_\_\_\_\_ INCHES FEET \_\_\_\_\_ INCHES  
\_\_\_\_\_ FEET \_\_\_\_\_ INCHES FEET \_\_\_\_\_ INCHES

Formation	Color	Hard or Soft	Top	Bottom	Oil, Gas or Water	Depth Found	Remarks
Surface - Gravel			0	63			
Sand			63	104			
Slate			104	110	Gas from Berea		
Sand			110	200	Fresh water 80'		
Little Dunkard			311	411	Water 300'		
Slate			411	520			
Big Dunkard			520	540			
Slate			540	687			
Gas Sand			687	717			
Salt Sand			717	1210			
Little Lime			1210	1225			
Pencil Cave			1225	1227			
Big Lime			1227	1429			
Big Injun			1439	1490			
Berea Sand			1944	1965			
Total depth			1986'				



JAN. 23 1956

Formation	Color	Hard or Soft	Top	Bottom	Oil, Gas or Water	Depth Found	Remarks

Date June 10, \_\_\_\_\_, 19 55

APPROVED UNITED FUEL GAS CO., Owner

By *S.R. Terrell*  
(Title)

Mgr. Civil Engineering Dept.