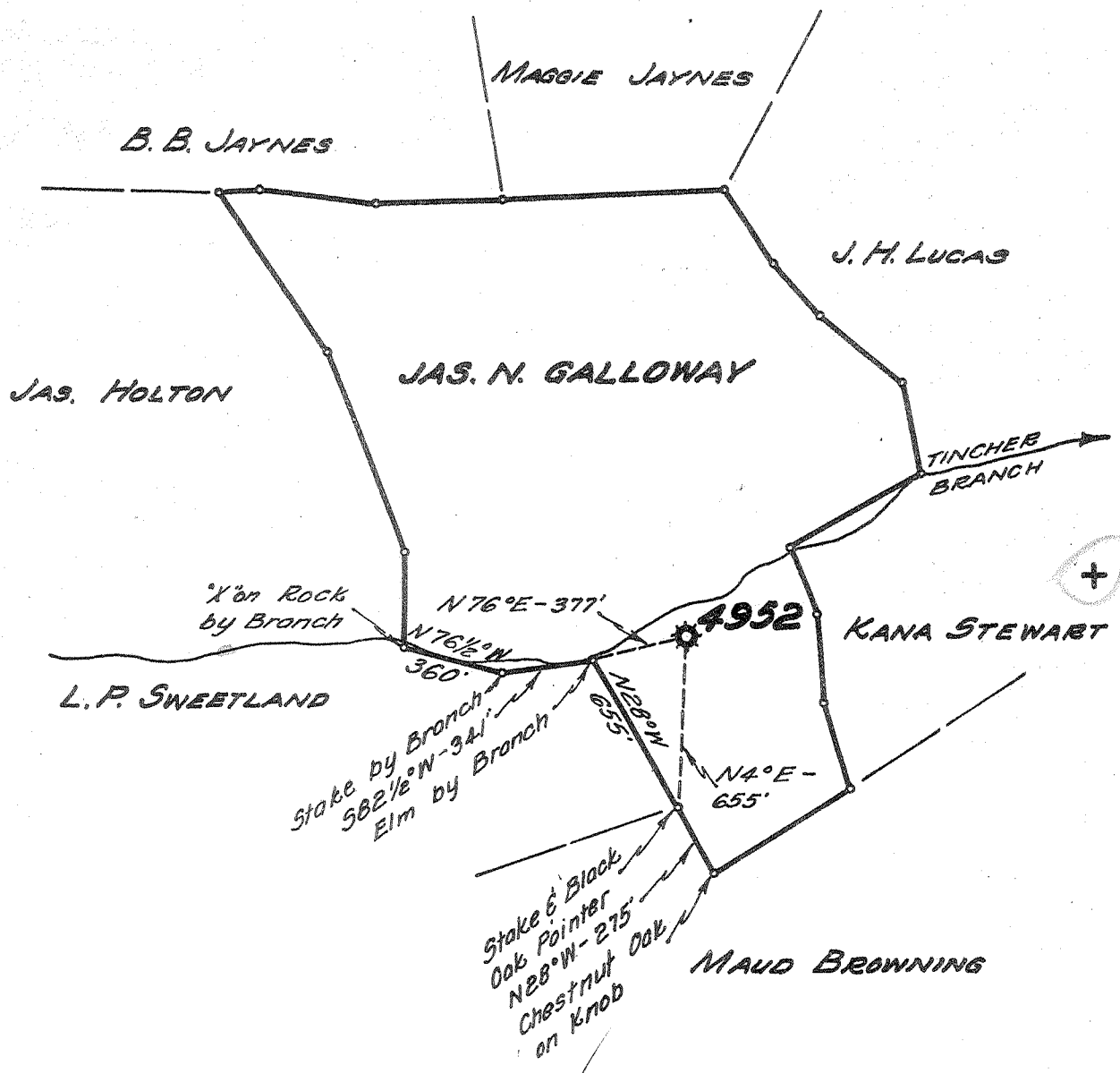


Latitude 38° 20'

Longitude 82° 05'



New Location...
 Drill Deeper.....
 Abandonment.....

JUL 5 1955

0.68 W
 5.07 2

Company UNITED FUEL GAS CO.
 Address CHARLESTON, W.VA.
 Farm JAMES N. GALLOWAY
 Tract _____ Acres 86 Lease No. 43394
 Well (Farm) No. _____ Serial No. 4952
 Elevation (Spirit Level) 745.8
 Quadrangle MILTON
 County LINCOLN District CARROLL
 Engineer Seibert A. Howell
 Engineer's Registration No. 2529
 File No. 36-51 Drawing No. _____
 Date 5-24-55 Scale 1" = 660'

STATE OF WEST VIRGINIA
 DEPARTMENT OF MINES
 OIL AND GAS DIVISION
 CHARLESTON

WELL LOCATION MAP
 FILE NO. LIN-1185-A

+ Denotes location of well on United States Topographic Maps, scale 1 to 62,500, latitude and longitude lines being represented by border lines as shown.

- Denotes one inch spaces on border line of original tracing.

JAMES N. GALLOWAY No. 4952 - U.F.G. Co. -

LIN-1185-A