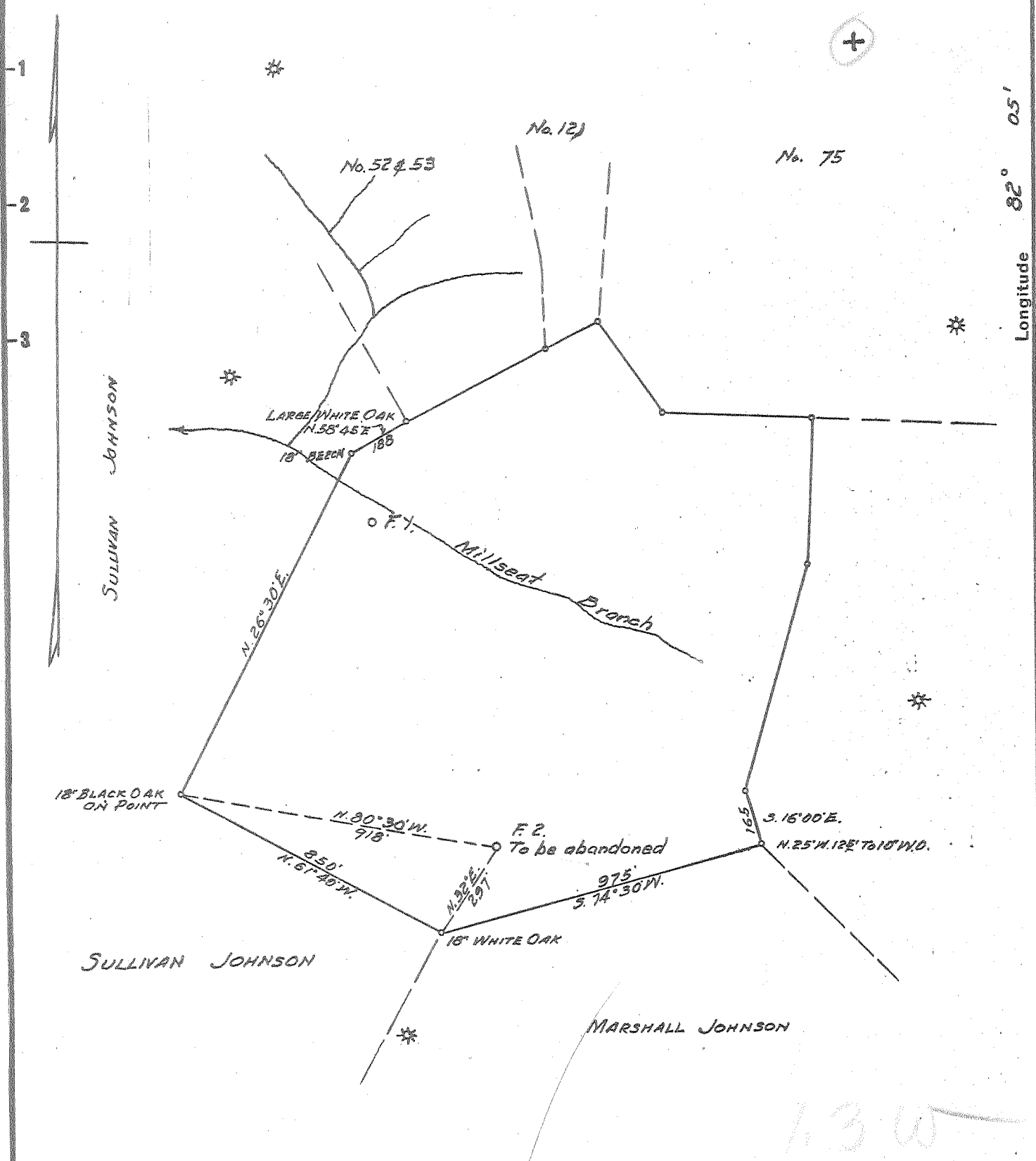


Latitude 38° 15'

Longitude 82° 05'



New Location...   
 Drill Deeper.....   
 Abandonment.....

JUNE 25 1956

1.3 W  
 0.97

Company A.F. MORRIS, TRUSTEE FOR S.P.B.&M.  
 Address HUNTINGTON, W. VA.  
 Farm MARY WALLS  
 Tract 77 Acres 50.5 Lease No. \_\_\_\_\_  
 Well (Farm) No. 2 Serial No. \_\_\_\_\_  
 Elevation (Spirit Level) 1109±  
 Quadrangle MIDKIFF  
 County LINCOLN District CARROLL  
 Engineer G. E. Curing  
 Engineer's Registration No. 309  
 File No. 77 Drawing No. \_\_\_\_\_  
 Date MAY 28<sup>TH</sup> 1956 Scale 1" = 400'

STATE OF WEST VIRGINIA  
 DEPARTMENT OF MINES  
 OIL AND GAS DIVISION  
 CHARLESTON

WELL LOCATION MAP  
 FILE NO. LIN-1232-A

+ Denotes location of well on United States Topographic Maps, scale 1 to 62,500, latitude and longitude lines being represented by border lines as shown.  
 - Denotes one inch spaces on border line of original tracing.

MARY WALLS No. 2 - A. F. MORRIS, TR. FOR S. P. B. & M. - LIN-1232-A



STATE OF WEST VIRGINIA  
DEPARTMENT OF MINES  
OIL AND GAS DIVISION

1510

WELL RECORD

Permit No. 1232-A

Oil or Gas Well Gas

(KIND)

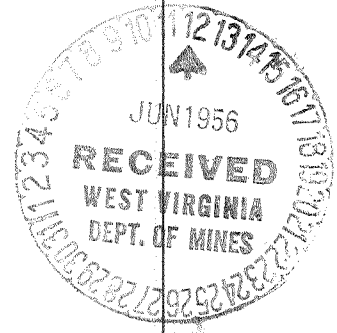
Company A. F. Morris, Trustee for SP&M  
 Address 1012 FHN Bk. Bldg., Huntington, W. Va.  
 Farm Jacob Walls (Marshall Johnson) Acres 50.5  
 Location (waters) Mill Seat Branch  
 Well No. 2 Elev. 1109  
 District Carroll County Lincoln  
 The surface of tract is owned in fee by Marshall Johnson  
 Address \_\_\_\_\_  
 Mineral rights are owned by Sweetland Land And Mineral Co  
 Address Above

Casing and Tubing	Used in Drilling	Left in Well	Packers
Size	(casing and tubing record is not available)		Kind of Packer
16			
13			
10			
8 1/2			
8			
5 3/16			Size of
3			Depth set
2			Perf. top
Liners Used			Perf. bottom
			Perf. top
			Perf. bottom

Drilling commenced \_\_\_\_\_  
 Drilling completed 10/2/22  
 Date Shot \_\_\_\_\_ From \_\_\_\_\_ To In Berea  
 With 30 qts. Glycerin  
 Open Flow \_\_\_\_\_ /10ths Water in \_\_\_\_\_ Inch  
12/10ths Merc. in 2" Big Line Inch  
 Volume 20/10 " 2" Big Line & Berea Cu. Ft.  
 Rock Pressure \_\_\_\_\_ lbs. \_\_\_\_\_ hrs.  
 Oil \_\_\_\_\_ bbls., 1st 24 hrs.  
 Fresh water \_\_\_\_\_ feet \_\_\_\_\_ feet  
 Salt water \_\_\_\_\_ feet \_\_\_\_\_ feet

CASING CEMENTED \_\_\_\_\_ SIZE \_\_\_\_\_ No. Ft. \_\_\_\_\_ Date \_\_\_\_\_  
 COAL WAS ENCOUNTERED AT \_\_\_\_\_ FEET \_\_\_\_\_ INCHES  
 \_\_\_\_\_ FEET \_\_\_\_\_ INCHES FEET \_\_\_\_\_ INCHES  
 \_\_\_\_\_ FEET \_\_\_\_\_ INCHES FEET \_\_\_\_\_ INCHES

Formation	Color	Hard or Soft	Top	Bottom	Oil, Gas or Water	Depth Found	Remarks
CORRELATED ESTIMATES OF FORMATIONS							
Water			460'				
Water			570'				
Salt Sand			1100' - 1550'				
Big Lime			1680' - 1872'				
Big Injun			1878' - 1911'				
Berea			2384' - 2408'				
Total Depth			2408'				



OCT 26 1956