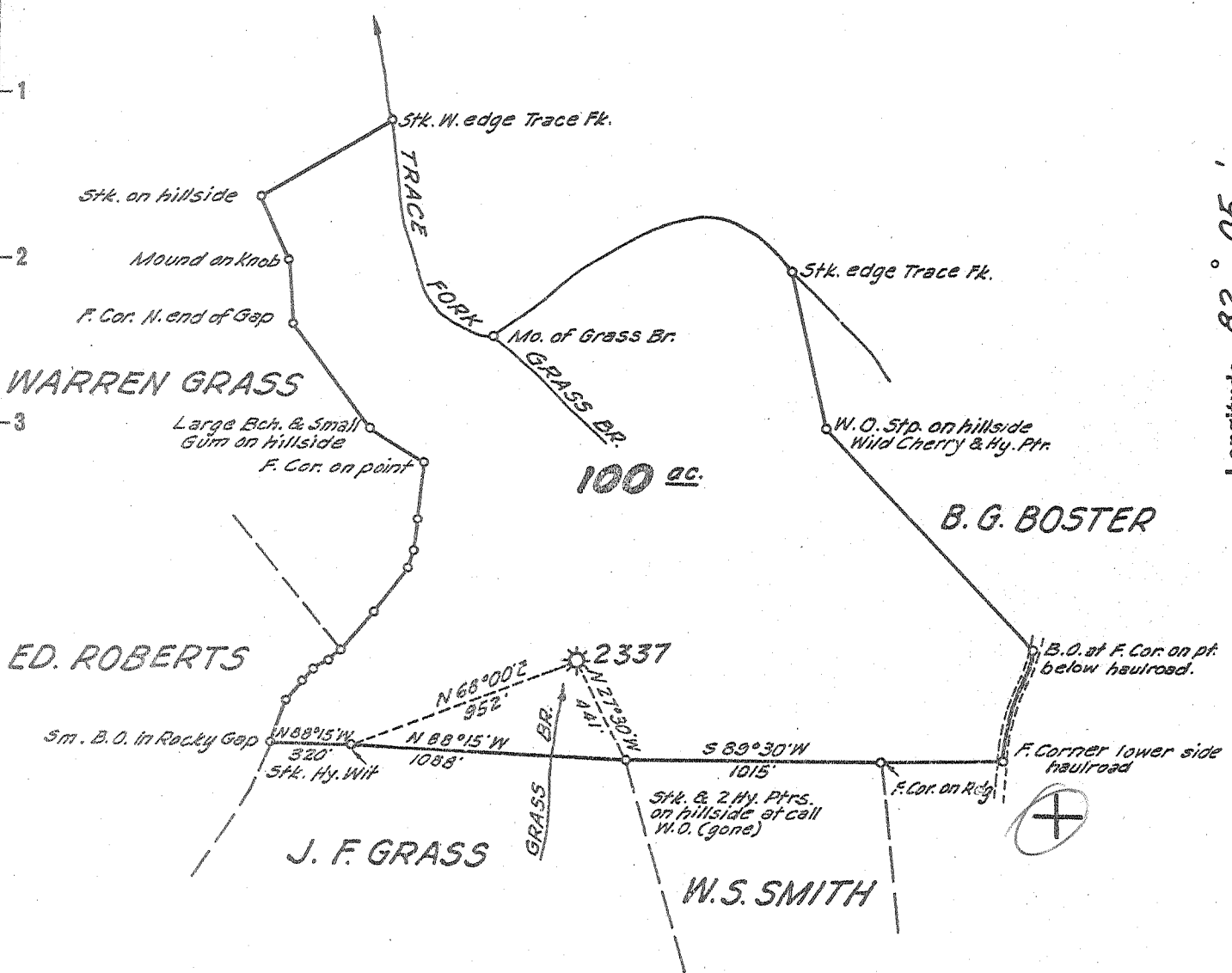


Latitude 38° 25'

Longitude 82° 05'



New Location ..   
 Drill Deeper .....   
 Abandonment.....

JUL 24 1957

1.12 W  
 5.45 Q

Company UNITED FUEL GAS CO.  
 Address CHARLESTON, W. VA.  
 Farm ELIZA J. GRASS  
 Tract \_\_\_\_\_ Acres 100 Lease No. 24641  
 Well (Farm) No. \_\_\_\_\_ Serial No. 2337  
 Elevation (Spirit Level) 737-B  
 Quadrangle MILTON  
 County LINCOLN District CARROLL  
 Engineer Paul E. Joachims  
 Engineer's Registration No. 669  
 File No. 36-57 Drawing No. \_\_\_\_\_  
 Date 6-25-57 Scale 1"=660'

STATE OF WEST VIRGINIA  
 DEPARTMENT OF MINES  
 OIL AND GAS DIVISION  
 CHARLESTON

WELL LOCATION MAP  
 FILE NO. LIN-1246-A

+ Denotes location of well on United States Topographic Maps, scale 1 to 62,500, latitude and longitude lines being represented by border lines as shown.  
 - Denotes one inch spaces on border line of original tracing.

ELIZA J. GRASS No. 2337 - U.F.G.C. - LIN-1246-A



1503

STATE OF WEST VIRGINIA  
DEPARTMENT OF MINES  
OIL AND GAS DIVISION

WELL RECORD

Quadrangle Milton

Permit No. Ab 1246-A

Oil or Gas Well Gas  
(KIND)

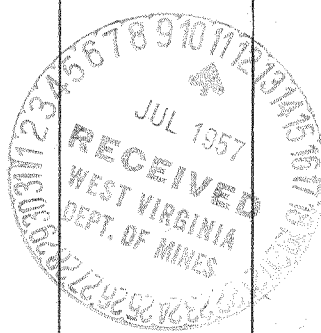
Company United Fuel Gas Co.  
Address Charleston 25, W. Va. P.O. Box 1273  
Farm Eliza J. Grass Acres 100  
Location (waters) Trace Fork  
Well No. 2337 Elev. 737  
District Carroll County Lincoln  
The surface of tract is owned in fee by \_\_\_\_\_  
Address \_\_\_\_\_  
Mineral rights are owned by J. Warren Grass, et al  
Bank of Milton Address Milton, W. Va.  
Drilling commenced Sept. 2, 1919  
Drilling completed Dec. 31, 1919  
Date Shot No From \_\_\_\_\_ To \_\_\_\_\_  
With \_\_\_\_\_

Casing and Tubing	Used in Drilling	Left in Well	Packers
Size			Kind of Packer
16			<u>Anchor</u>
13			Size of
10		<u>40'</u>	<u>3"x6-5/8"</u>
8 1/4		<u>356'</u>	Depth set
6 1/2		<u>1554</u>	<u>1833'</u>
5 3/16			Perf. top
3		<u>2040'</u>	Perf. bottom
2			Perf. top
Liners Used			Perf. bottom

Open Flow 20 /10ths Water in 2 Inch  
/10ths Merc. in \_\_\_\_\_ Inch  
Volume 189,000 Cu. Ft.  
Rock Pressure 270 lbs. 48 hrs.  
Oil \_\_\_\_\_ bbls., 1st 24 hrs.  
Fresh water \_\_\_\_\_ feet  
Salt water 825 feet

CASING CEMENTED \_\_\_\_\_ SIZE \_\_\_\_\_ No. Ft. \_\_\_\_\_ Date \_\_\_\_\_  
COAL WAS ENCOUNTERED AT \_\_\_\_\_ FEET \_\_\_\_\_ INCHES  
\_\_\_\_\_ FEET \_\_\_\_\_ INCHES \_\_\_\_\_ FEET \_\_\_\_\_ INCHES  
\_\_\_\_\_ FEET \_\_\_\_\_ INCHES \_\_\_\_\_ FEET \_\_\_\_\_ INCHES

Formation	Color	Hard or Soft	Top	Bottom	Oil, Gas or Water	Depth Found	Remarks
1st Salt Sand			765	1140	Salt water	825	
Maxon			1140	1180			
Slate			1180	1185	Hole full water, salt	850	
Little Lime			1185	1205			
Pencil Cave			1205	1210			
Big Lime			1210	1390			
Keener Sand			1390	1425			
Slate			1425	1440			
Big Injun			1440	1500			
Slate & Shells			1500	1961			
Berea			1961	1984			
Total Depth			2040'				



DEC 6 1957

