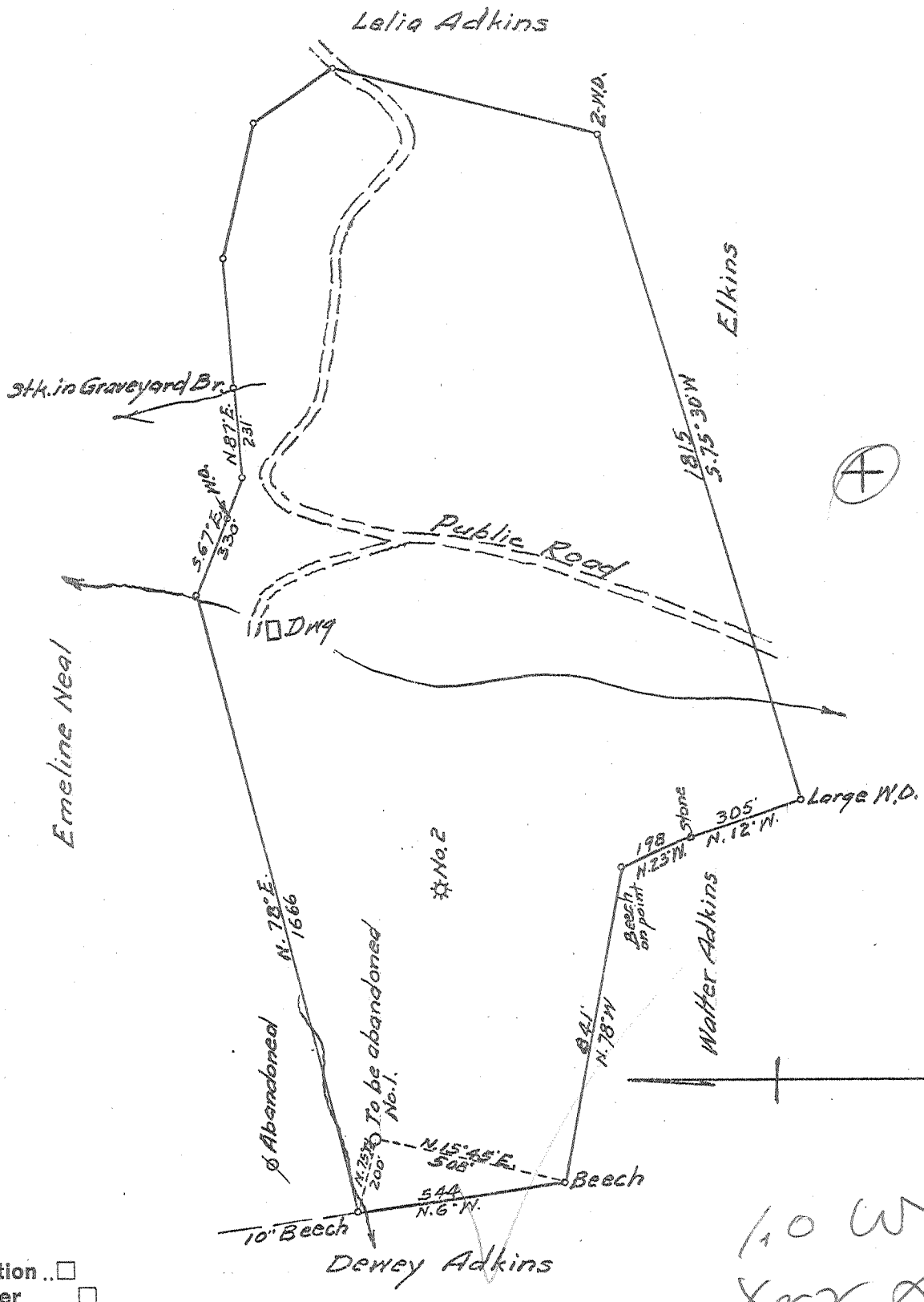


Latitude $39^{\circ} 15'$

Longitude $82^{\circ} 05'$



New Location
 Drill Deeper
 Abandonment

OCT 28 1957

10 W
 Xrr

Company ROY & Mc COMAS
 Address HUNTINGTON, W. VA.
 Farm CYNTHIA ADKINS
 Tract _____ Acres 53 Lease No. _____
 Well (Farm) No. 1 Serial No. 36
 Elevation (Spirit Level) 750±
 Quadrangle MIDKIFF
 County LINCOLN District UNION
 Engineer E. G. Swing
 Engineer's Registration No. 309
 File No. _____ Drawing No. _____
 Date 7-12-57 Scale 1"=400'

STATE OF WEST VIRGINIA
 DEPARTMENT OF MINES
 OIL AND GAS DIVISION
 CHARLESTON

WELL LOCATION MAP
 FILE NO. LIN-1252-A

+ Denotes location of well on United States Topographic Maps, scale 1 to 62,500, latitude and longitude lines being represented by border lines as shown.
 - Denotes one inch spaces on border line of original tracing.

CYNTHIA ADKINS No. 1(36) - ROY & McCOMAS - LIN-1252-A



1519

STATE OF WEST VIRGINIA
DEPARTMENT OF MINES
OIL AND GAS DIVISION

Quadrangle Muskoff
Permit No. 1000-A

WELL RECORD

Oil or Gas Well Gas
(KIND)

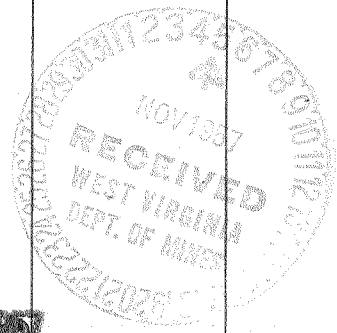
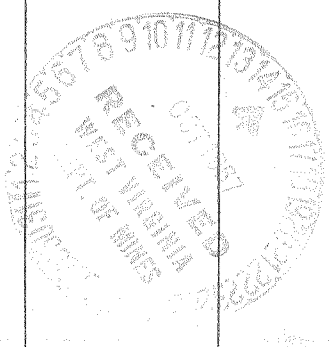
Company Roy & McGomas,
Address Huntington, W.Va.
Farm Synthia Adkins, Acres 59
Location (waters) Mud River,
Well No. One. (36) Elev. 755
District Union County Lincoln
The surface of tract is owned in fee by Synthia Adkins,
Address Sias, W.Va.
Mineral rights are owned by Synthia Adkins,
Address Sias, W.Va.
Drilling commenced July 18, 1923.
Drilling completed Sept. 10, 1923,
Date Shot -- From -- To --
With --
Open Flow /10ths Water in -- Inch
/10ths Merc. in -- Inch
Volume 550,000 Cu. Ft.
Rock Pressure -- lbs. -- hrs.
Oil -- bbls., 1st 24 hrs.
Fresh water 160 feet -- feet
Salt water 755 feet -- feet

Casing and Tubing	Used in Drilling	Left in Well	Packers
Size			
16			Kind of Packer
13			
10		30'	Size of
8 1/4			
6 1/2	1,457'	1,457'	Depth set
5 3/16			
3			Perf. top
2		2195'	Perf. bottom
Liners Used			Perf. top
			Perf. bottom

CASING CEMENTED --- SIZE --- No. Ft. --- Date ---

COAL WAS ENCOUNTERED AT --- FEET --- INCHES
--- FEET --- INCHES --- FEET --- INCHES
--- FEET --- INCHES --- FEET --- INCHES

Formation	Color	Hard or Soft	Top	Bottom	Oil, Gas or Water	Depth Found	Remarks
Surface & Stone	Gravel, and gravel,		0	160			
Coal			160	185			
Sand and slate,			185	189?			
Little Dunkard Sand,			189	545			
Slate,			545	605			
Big Dunkard Sand,			605	610			
Slate and gravel,			610	620			
Salt Sand,			620	755			
Slate and shells,			755	1,170			
Maxton Sand,			1,170	1,275			
Slate and Lime Shells,			1,275	1,305			
Red Rock,			1,305	1,340			
Slate and lime, stone,			1,340	1343			
Big Lime,			1,343	1441			
Keener Sand,			1,441	1,633			
Big Injun Sand,			1,633	1,638			
Slate and Shells,			1,638	1,660			
Berea			1,660	2,153			
Slate and shells,			2,153	2,166			
Bottom of Hole,			2,166	2,197			
				2197 ft.			



DEC 6 1927

