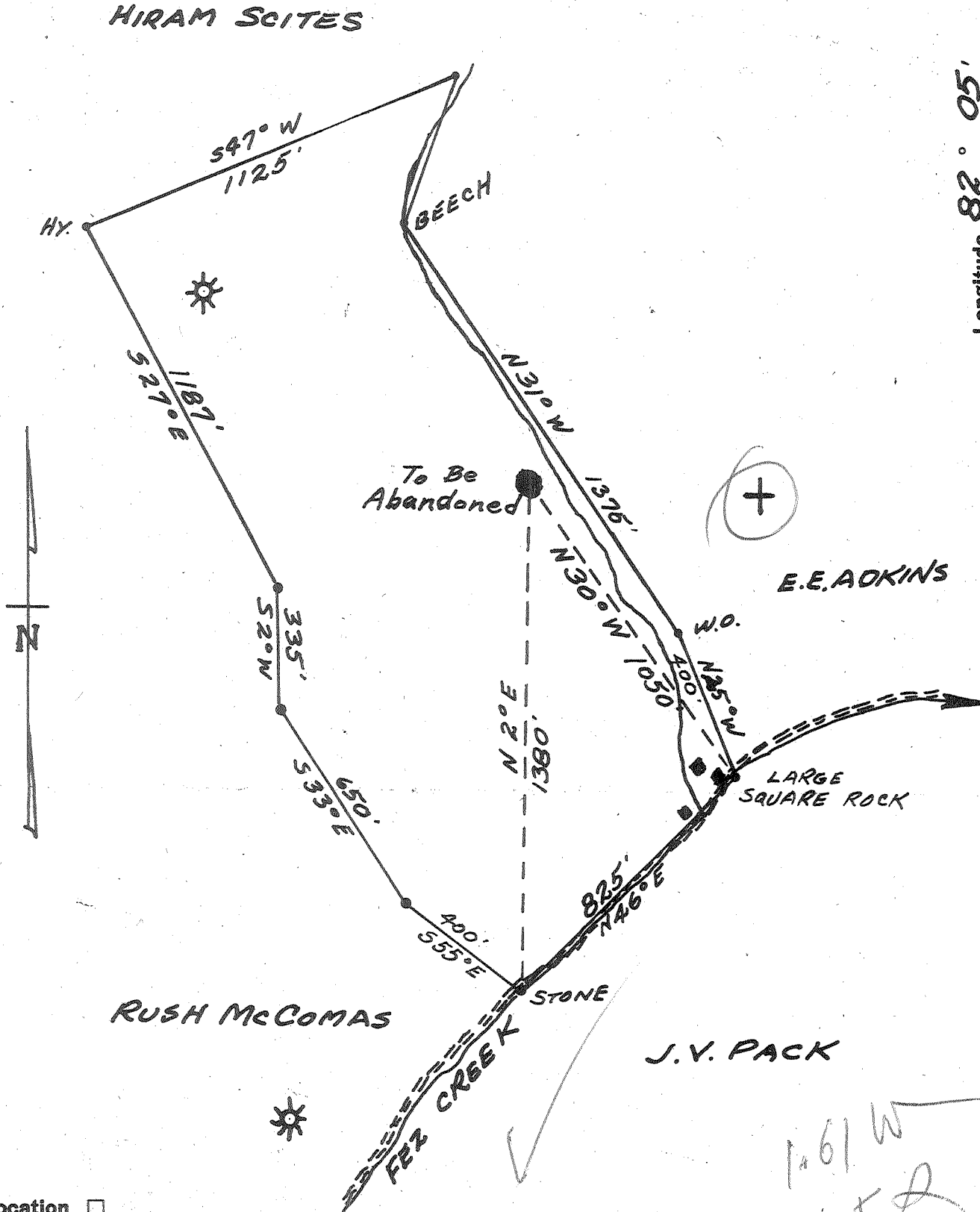


Latitude  $8^{\circ} 15'$

Longitude  $82^{\circ} 05'$



New Location ..   
 Drill Deeper .....   
 Abandonment .....

AUG 16 1959

1.61 W  
 Y. J. A

Company ROY & McCOMAS  
 Address HUNTINGTON, W.VA.  
 Farm O. F. CURRY  
 Tract \_\_\_\_\_ Acres 50 Lease No. \_\_\_\_\_  
 Well (Farm) No. 1 Serial No. 1  
 Elevation (Spirit Level) 740'  
 Quadrangle MIDKIFF  
 County LINCOLN District UNION  
 Engineer TRACED FROM G. C. EWING  
 Engineer's Registration No. 309  
 File No. \_\_\_\_\_ Drawing No. \_\_\_\_\_  
 Date 7-28-59 Scale 1" = 400'

STATE OF WEST VIRGINIA  
 DEPARTMENT OF MINES  
 OIL AND GAS DIVISION  
 CHARLESTON

WELL LOCATION MAP  
 FILE NO. LIN-12.63-B

+ Denotes location of well on United States Topographic Maps, scale 1 to 62,500, latitude and longitude lines being represented by border lines as shown.

- Denotes one inch spaces on border line of original tracing.

O.F. CURRY No. 1 - ROY & McCOMAS - LIN-1263A



1538

STATE OF WEST VIRGINIA  
DEPARTMENT OF MINES  
OIL AND GAS DIVISION

Quadrangle Midkiff

Permit No. 1263-A

WELL RECORD

Oil or Gas Well Gas  
(KIND)

Company Roy & McComas  
Address Huntington, W. Va.  
Farm O. F. Curry Acres 50  
Location (waters) Fox Creek on Mud River  
Well No. 1 Elev. 710'  
District Union County Lincoln  
The surface of tract is owned in fee by \_\_\_\_\_  
Address \_\_\_\_\_  
Mineral rights are owned by O. F. Curry  
Address Midkiff, W. Va.

Drilling commenced 4-26-23  
Drilling completed 5-30-23  
Date Shot 5-28-23 From \_\_\_\_\_ To \_\_\_\_\_  
With \_\_\_\_\_

Open Flow /10ths Water in \_\_\_\_\_ Inch  
/10ths Merc. in \_\_\_\_\_ Inch  
Volume Barrel 315 MCP and shale 280 M Cu. Ft.

Rock Pressure \_\_\_\_\_ lbs. \_\_\_\_\_ hrs.  
Oil None bbls., 1st 24 hrs.

WELL ACIDIZED \_\_\_\_\_

WELL FRACTURED \_\_\_\_\_

RESULT AFTER TREATMENT \_\_\_\_\_

ROCK PRESSURE AFTER TREATMENT \_\_\_\_\_

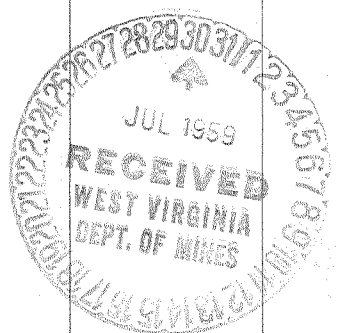
Fresh Water \_\_\_\_\_ Feet Salt Water \_\_\_\_\_ Feet

Casing and Tubing	Used in Drilling	Left in Well	Packers
Size			Kind of Packer
16			
13			
10	20'	20'	Size of
8 1/4			
6 3/8	1307'	1307'	Depth set <u>206 1/2'</u>
5 3/16			
3			Perf. top _____
2	206 1/2'	206 1/2'	Perf. bottom _____
Liners Used			Perf. top _____
			Perf. bottom _____

CASING CEMENTED \_\_\_\_\_ SIZE \_\_\_\_\_ No. Ft. \_\_\_\_\_ Date \_\_\_\_\_  
None

COAL WAS ENCOUNTERED AT \_\_\_\_\_ FEET \_\_\_\_\_ INCHES  
\_\_\_\_\_ FEET \_\_\_\_\_ INCHES \_\_\_\_\_ FEET \_\_\_\_\_ INCHES  
\_\_\_\_\_ FEET \_\_\_\_\_ INCHES \_\_\_\_\_ FEET \_\_\_\_\_ INCHES

Formation	Color	Hard or Soft	Top	Bottom	Oil, Gas or Water	Depth	Remarks
Mud			0	15			
Sand			15	50			
Slate			50	150			
Sand			150	215			
Slate			215	300			
Sand			300	350			
Slate			350	400			
Sand			400	460			
Slate Shells			460	580			
Sand			580	660			
Slate			660	670			
Salt Sand			670	860			
Sand			860	1025			
Slate			1025	1070			
Marton Sand			1070	1110			
Red Rock			1110	1150			
Sand			1150	1200			
Red Rock			1200	1210			
Slate			1210	1235			
Sand			1235	1245			
Slate			1245	1250			
Little Lime			1250	1270			
Pencil Cave			1270	1280			
Big Lime			1280	1470			
Red Rock			1470	1480			
Big Injun			1480	1514			
Slate Shells			1514	1980			
Brown Shale			1980	1998			



NOV 5 1959

Formation	Color	Hard or Soft	Top	Bottom	Oil, Gas or Water	Depth Found	Remarks
Berea Sand			1998	2018	Gas		318 NCF Open Flow After Shot
Slate Shell			2018	2079			
Slate			2079	2987			
Brown Shale			2987	3089			
Slate			3089	3114			
Brown Shale			3114	3270	Gas	3114	280 NCF Open Flow After Shot
Slate			3270	3288			
Bottom of Hole				3288			
2" Tubing Packer set at 2064' in shell 1/6' below Berea Sand. First Packer was removed.							

Date July 29, 19 59

APPROVED Roy & McComas, Owner

By Guy McComas  
(Title)