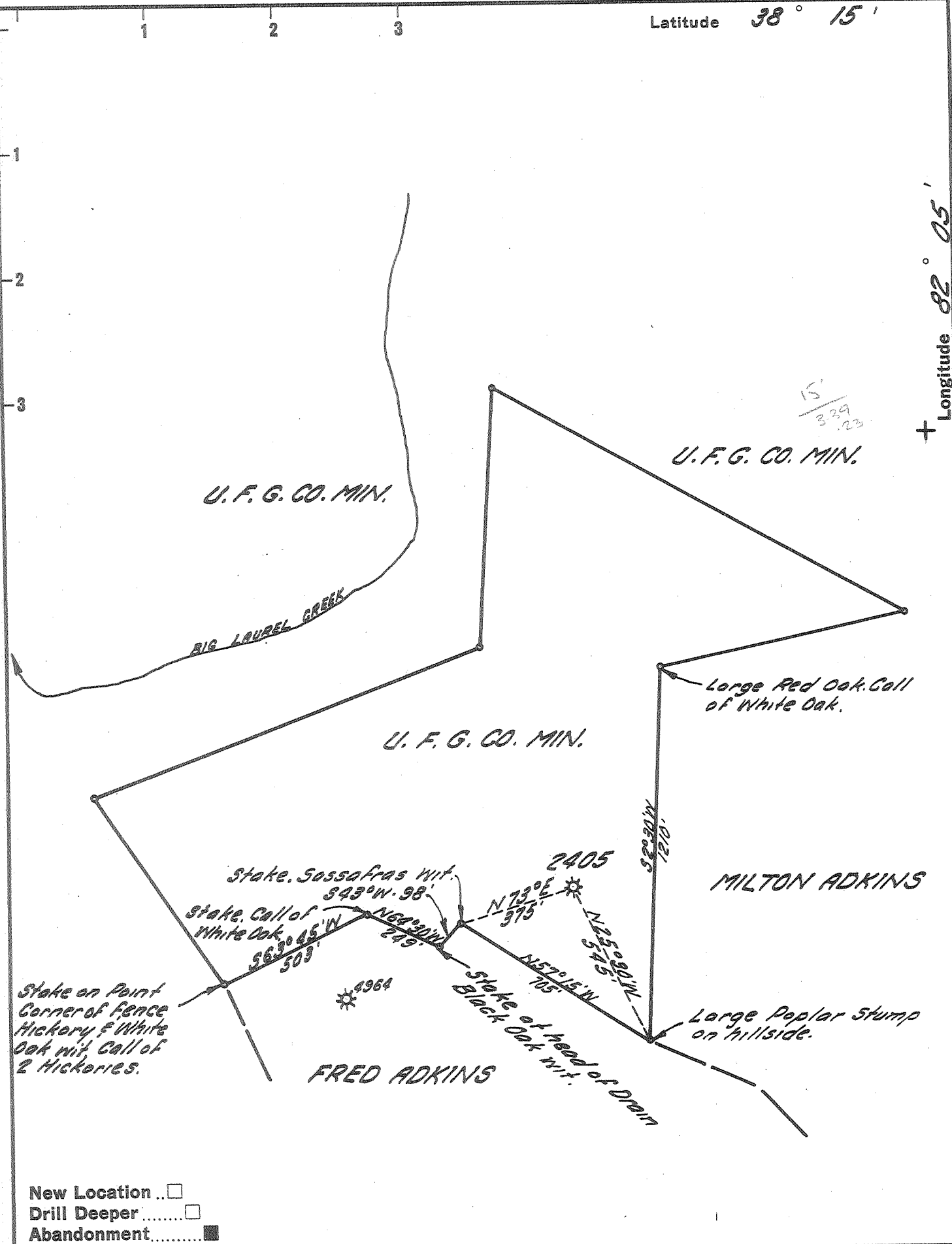


Latitude 38° 15'

Longitude 82° 05'



New Location ..
 Drill Deeper
 Abandonment

Company UNITED FUEL GAS CO.
 Address CHARLESTON, W. VA.
 Farm UNITED FUEL GAS CO. MIN.
 Tract 2 Acres 5.58.11 REF. Lease No. 24690
 Well (Farm) No. _____ Serial No. 2405
 Elevation (Spirit Level) 792.00'
 Quadrangle MIDKIFF
 County LINCOLN District UNION
 Engineer Seybert R. Ferrell
 Engineer's Registration No. 2529
 File No. 36-49 Drawing No. _____
 Date 1-26-62 Scale 1" = 400'

STATE OF WEST VIRGINIA
 DEPARTMENT OF MINES
 OIL AND GAS DIVISION
 CHARLESTON

WELL LOCATION MAP
 FILE NO. 612-1297-A

⊕ Denotes location of well on United States Topographic Maps, scale 1 to 62,500, latitude and longitude lines being represented by border lines as shown.

— Denotes one inch spaces on border line of original tracing.