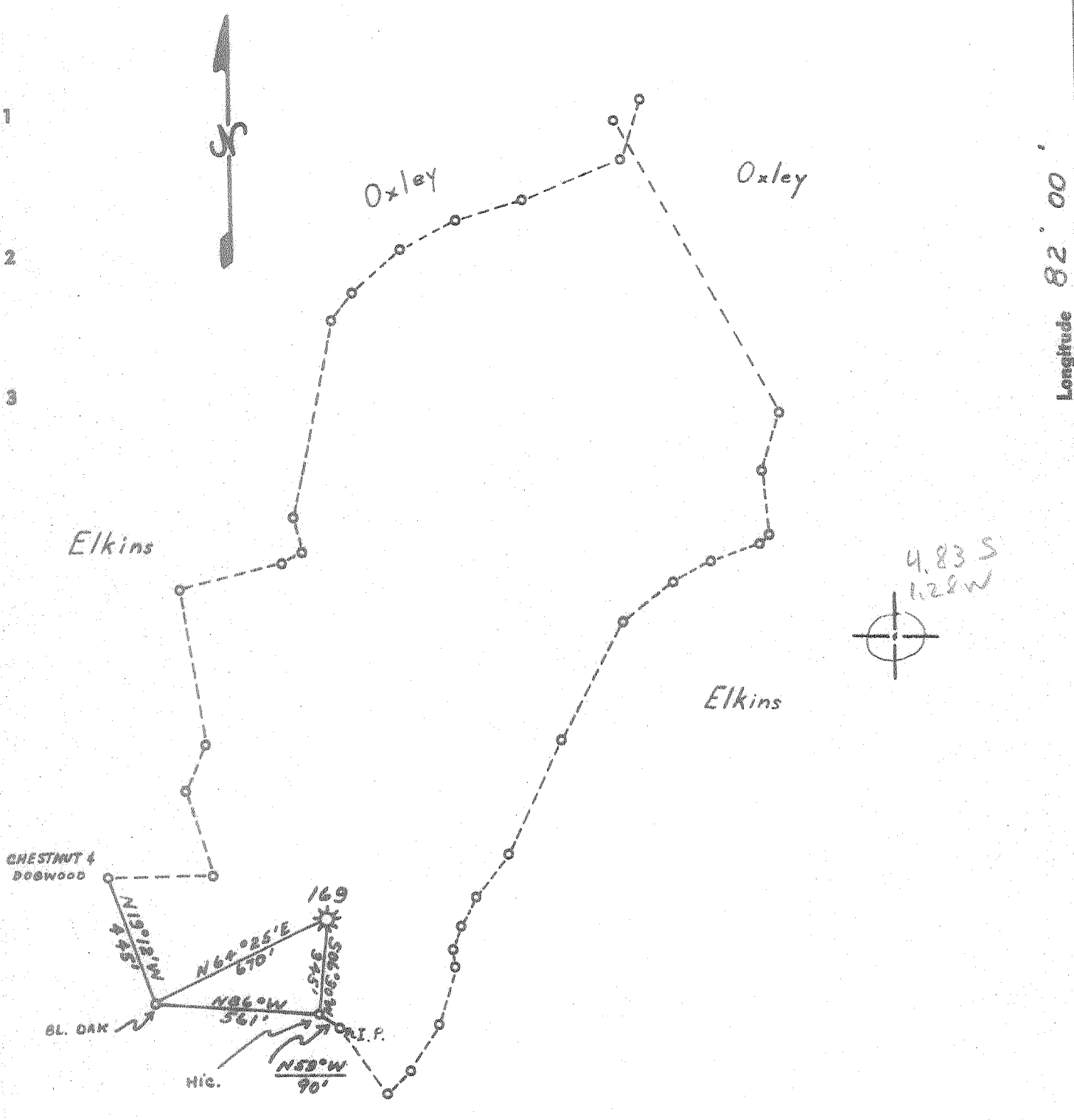


Latitude 38 15

Longitude 82 00



MINIMUM ERROR OF CLOSURE 1' IN 200'  
SOURCE OF ELEVATION: USBM WEST OF BERNIE 808

- New Location
- Drill Deeper
- Redrill
- Abandonment  9-22-67

"I, the undersigned, hereby certify that this map is correct to the best of my knowledge and belief and shows all the information required by paragraph 6 of the rules and regulations of the oil and gas section of the mining laws of West Virginia."

Company SOUTHEASTERN GAS COMPANY  
 Address CHARLESTON, W. VA.  
 Farm STONE  
 Tract \_\_\_\_\_ Acres 93 ± Lease No. 2519  
 Well (Farm) No. 1 Serial No. 169  
 Elevation (Spirit Level) 808  
 Quadrangle MIDKIFF  
 County LINCOLN District JEFFERSON  
 Engineer G. H. Hall  
 Engineer's Registration No. 2602  
 File No. \_\_\_\_\_ Drawing No. \_\_\_\_\_  
 Date 8-31-67 Scale 1" = 500'

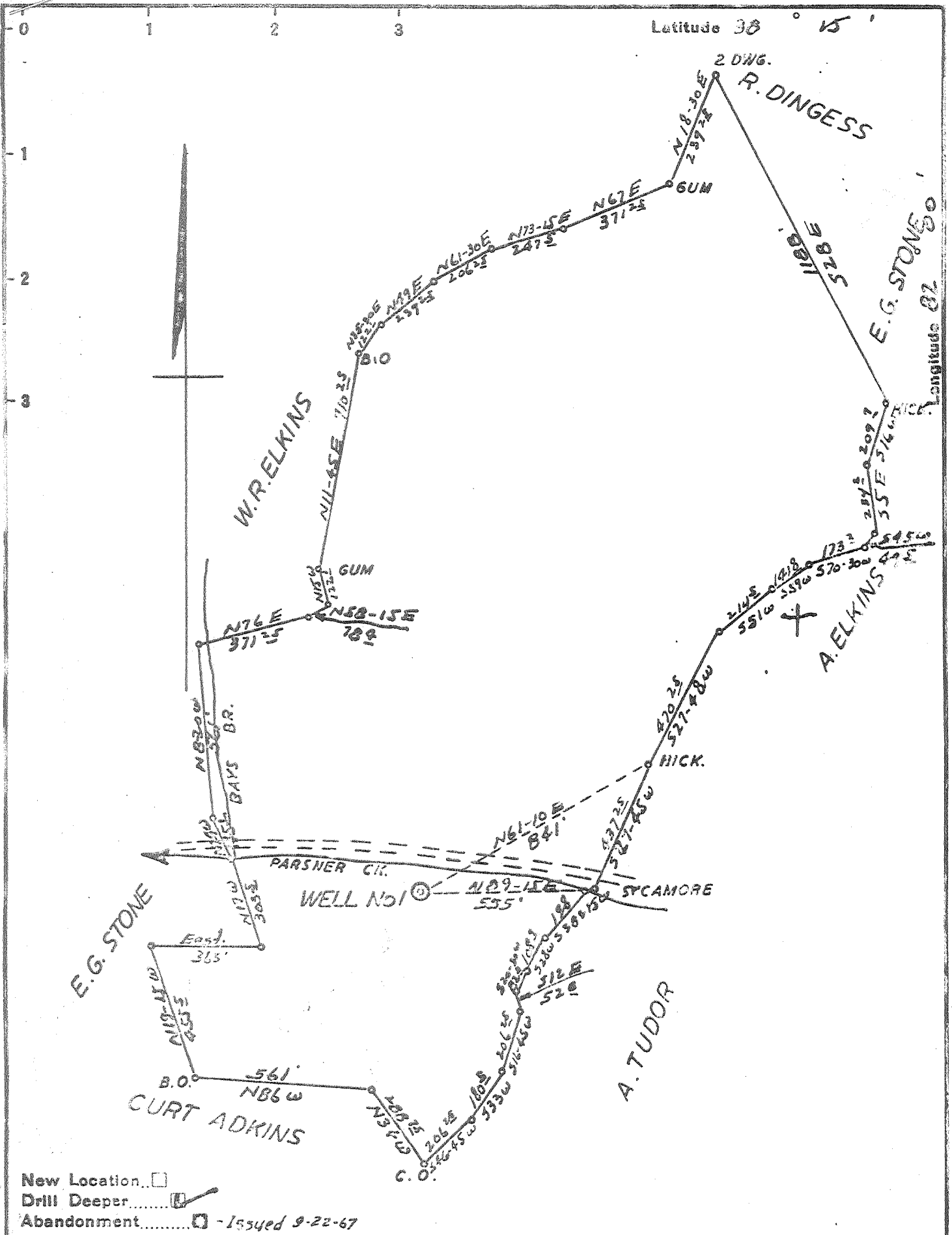
STATE OF WEST VIRGINIA  
DEPARTMENT OF MINES  
OIL AND GAS DIVISION  
CHARLESTON

WELL LOCATION MAP

FILE NO. LIN-1331-A

+ Denotes location of well on United States Topographic Maps, scale 1 to 62,500, latitude and longitude lines being represented by border lines as shown.

-- Denotes one inch spaces on border line of original tracing.



New Location   
 Drill Deeper   
 Abandonment  - Issued 9-22-67

Company HAL PACK dba Hal Pack & Co  
KANAWHA GAS & UTILITIES CO.  
 Address HAMLIN W.VA.  
 Farm E. G. STONE  
 Tract 1 Acres 93 Lease No. 115  
 Well (Farm) No. 1 Serial No. 169  
 Elevation (Spirit Level) 868  
 Quadrangle MIDKIFF NE  
 County LINCOLN District JEFFERSON  
 Engineer S. V. HAWORTH  
 Engineer's Registration No. 224  
 File No. \_\_\_\_\_ Drawing No. \_\_\_\_\_  
 Date 7-25-40 Scale 1"=400'

STATE OF WEST VIRGINIA  
 DEPARTMENT OF MINES  
 OIL AND GAS DIVISION  
 CHARLESTON

WELL LOCATION MAP

FILE NO. LIN-309-D-P

Transferred From Lin-1331-A

+ Denotes location of well on United States Topographic Maps, scale 1 to 62,500, latitude and longitude lines being represented by border lines as shown.

- Denotes one inch spaces on border line of original tracing.

WEST VIRGINIA DEPARTMENT OF MINES  
OIL & GAS DIVISION  
W E L L R E C O R D

Permit No. Lin-309  
Midkiff Quad.

Gas Well

Company Kanawha Gas & Utilities Co.  
Address Hamlin, W. Va.  
Farm E. G. Stone ACRES 93  
Location Parsner Creek  
Well No. 1 or #169 ELEV. 868  
District Jefferson - Lincoln County  
Surface & Mineral E. G. Stone, Bernie, W. Va.  
Commenced Aug. 12, 1940  
Completed Sept. 16, 1940  
Shot 8/16/40 - Depth 3562  
Volume 134,000 c.f.  
Rock Pressure 380 lbs. - hrs.  
Water -

CASING & TUBING  
(No record given)

Packer - Hook Wall  
Size - 6-5/8 x 2

DEEPENING RECORD:

Slate	wh	s	2278	2314	
Shell	dk	h	2314	2329	
Slate&Shells	dk	h	2329	2390	Berea Gas when Shale was
Slate	wh	s	2390	2450	encountered 3/10 water in 1"
Shell	dk	h	2450	2475	Gas increase at 2845' to 5/10 W in 1"
Slate	wh	s	2475	2490	Gas increase at 3168 to 8/10 W in 1"
Shell	gr	h	2490	2500	Gas increase at 3190 to 10/10 W in 1"
Slate&Shells	dk	h	2500	2535	Gas increase at 3200 to 12/10 W in 1"
Slate	dk	s	2535	2550	Gas increase at 3350 to 18/10 W in 1"
Shells	wh	h	2550	2810	
Slate	dk	s	2810	2940	Open Flow when tubed 8/10 W in 2"
Shell	wh	h	2940	3350	
B. Shale	bn	s	3350	3387	
Shell	dk	h	3387	3460	Before shooting hole was filled up to 3562'
B. Shale	bn	h	3460	3480	
Slate	wh	s	3480	3530	
B. Shale	bn	h	3530	3640	
Slate	wh	s	3640	3646	
Total Depth				3646	