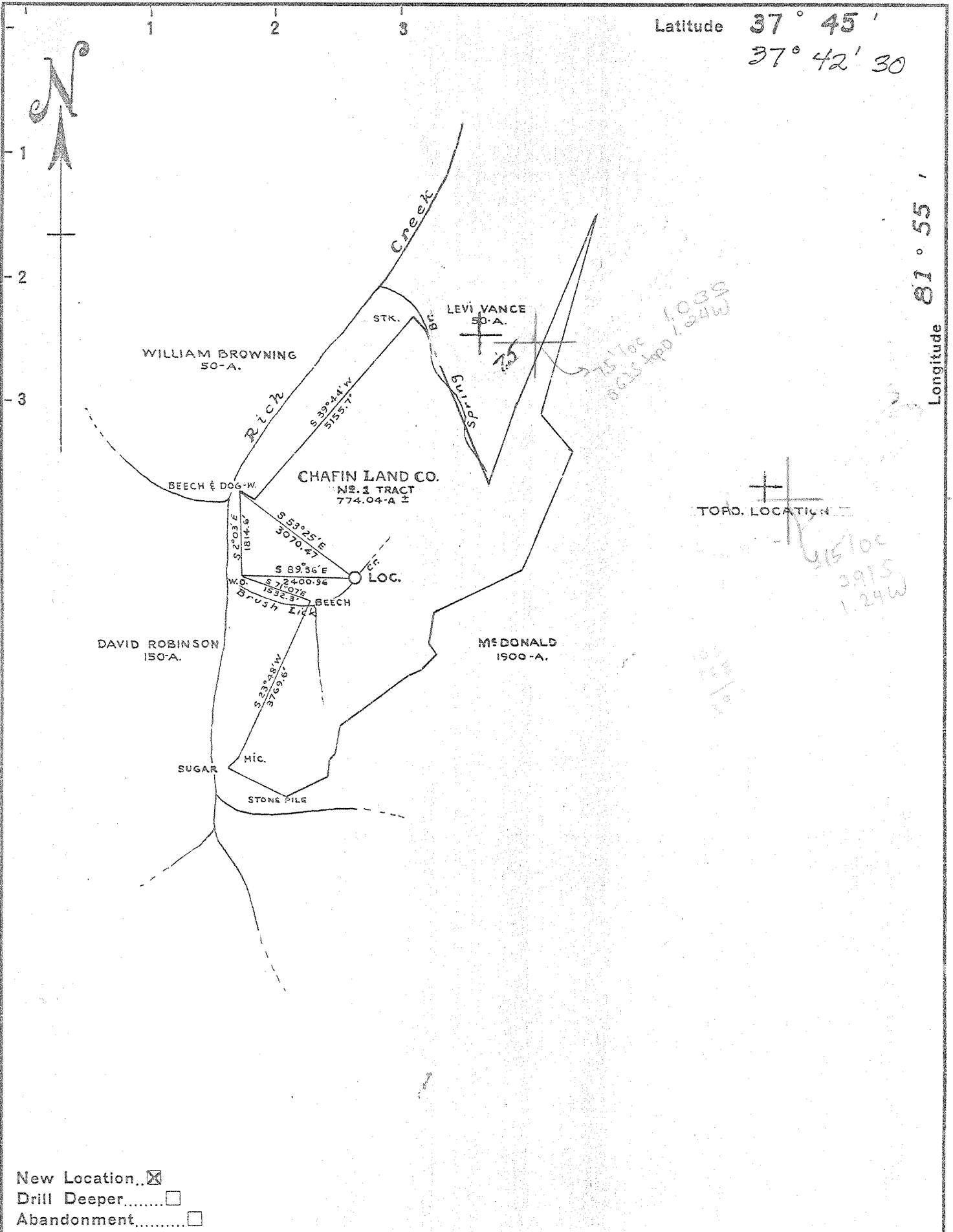


7500

Latitude 37° 45'  
37° 42' 30"

5300

Longitude 81° 55'



New Location...   
 Drill Deeper.....   
 Abandonment.....

Company. Cities Service Oil & Gas Corp. <sup>169</sup>  
 P.O. Box 873 - Charleston, WVa.  
 Address \_\_\_\_\_  
 Farm Chafin Land Co.  
 Tract Nº 1 Acres 774.04 Lease No. C-4021  
 Well (Farm) No. 1 Serial No. GW-1179  
 Elevation (Spirit Level) 1617.45  
 Quadrangle Gilbert 0493-N.W. Mon 75 WLI  
 County Logan District Triadelphia 34 Ed  
 Engineer R. B. Anderson  
 Engineer's Registration No. 2074  
 File No. \_\_\_\_\_ Drawing No. W-1-52  
 Date Feb. 11, 1952 Scale 1" = 2640

STATE OF WEST VIRGINIA  
 DEPARTMENT OF MINES  
 OIL AND GAS DIVISION  
 CHARLESTON

WELL LOCATION MAP  
 FILE NO. LOG-293-DD

+ Denotes location of well on United States  
 Topographic Maps, scale 1 to 62,500, lat-  
 itude and longitude lines being represented  
 by border lines as shown.

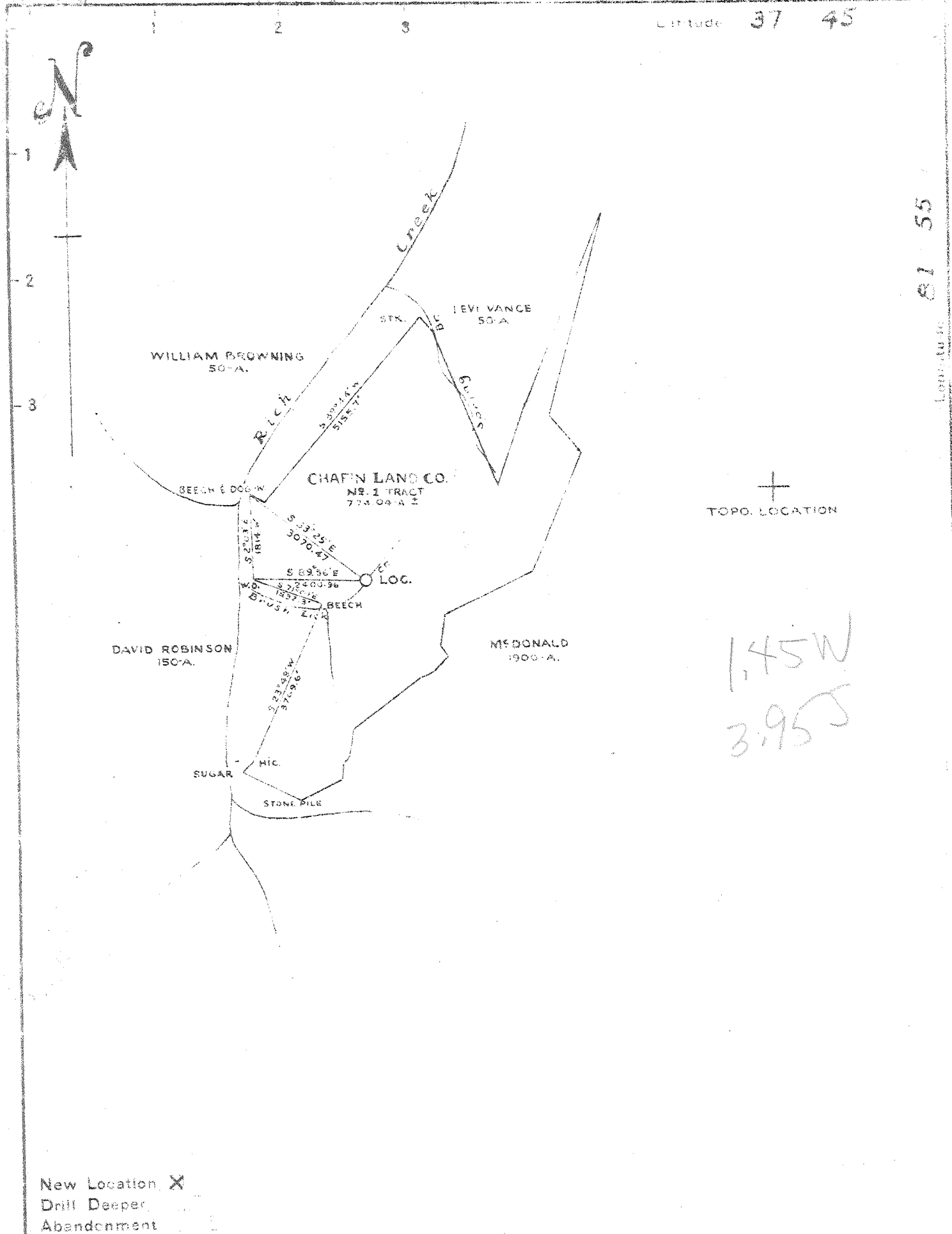
- Denotes one inch spaces on border line  
 of original tracing.

NOV 24 1986

47-045

OWND DEEP Well 6-6 Magnolia

(265)



Latitude 37 45

81 55

+  
TOPO. LOCATION

1.45W  
3.95S

New Location X  
Drill Deeper  
Abandonment

Company Columbian Carbon Co.  
 Address Box - 873 Charleston  
 Farm Chafin Land Co.  
 Tract N<sup>o</sup> 1 Acres 774.04 Lease No. C-4021  
 Well (Farm) No. 1 Serial No. GW-1179  
 Elevation (Spirit Level) 1617.45  
 Quadrangle Gilbert 3-N.W.  
 County Logan District Triadelphia  
 Engineer R. D. Anderson  
 Engineer's Registration No. 2074  
 File No. \_\_\_\_\_ Drawing No. W 1-52  
 Date Feb. 11, 1952 Scale 1" = 2640

STATE OF WEST VIRGINIA  
 DEPARTMENT OF MINES  
 OIL AND GAS DIVISION  
 CHARLESTON

WELL LOCATION MAP  
 FILE NO. LOG-2930

+ Denotes location of well on United States Topographic Maps, scale 1 to 62,500. Latitude and longitude lines being represented by border lines as shown.

- Denotes any such location on border lines of original traction.

66 265

WEST VIRGINIA DEPARTMENT OF MINES  
OIL & GAS DIVISION  
W E L L R E C O R D

Permit No. Log 293

Gilbert Quad.

Company           Columbian Carbon Company  
Address           Box 872, Charleston 23, W.Va.  
Farm              Chafin Land Co. A 774.04  
Location          Rich Creek  
Well No.          1-GW-1179   Elev. 1617.45'G  
District          Philadelphia Logan County  
Surface           Chafin Land Co. Huntington, W.Va.  
Mineral           Same  
Commenced        3-20-52  
Completed        7-10-52  
Not shot  
Open flow        41/10ths M in 7" 23#  
Volume           10,086,000 C.F.  
Rock Pressure    775 lbs. 18 hrs.  
Fresh Water      20', 461-68' 2-13" blr. per hr.  
Salt Water       1630', 1 1/2 -10" blr. per hr.  
                  1792' H.F.

Gas Well  
CASING & TUBING

	16 65#	22'1	22'1
	13 3/8 48#	388'2	388'2
	10 3/4 32#	1226'	663'2
	8 24#	2084'6	Flt.
	7 23#	2860'3	2860'3

Midget B.H. Packer  
Size 7"  
Depth 2867' SLM

Coal at 71' 24"

Sandstone	0	22
Slate	22	37
Lime	37	60
Sand	60	71
Coal	71	73
Slate	73	106
Sand	106	157
Slate	157	267
Sand	267	290
Slate	290	306
Lime	306	313
Sand	313	373
Slate 382'DLM 385'SLM	373	409
Sand	409	464
Slate & Shells	464	552
Sand	552	591
Slate	391	752
Sand	752	780
Slate	780	976
Sand	976	1018
Slate	1018	1072
Sand	1072	1091
Slate	1091	1152
Sand	1152	1205
Slate	1205	1246
Sand 1210' DLM-1224'SLM 1246	1246	1263
Slate	1263	1271
Sand	1271	1370
Slate	1370	1402
Sand	1402	1440
Slate	1440	1451
Sand	1451	1690
Slate & Shells	1690	1712
Sand	1712	1782
Slate	1782	1786
Sand	1786	2039
Slate	2039	2045
Red Rock 2083'SLM 2045	2045	2054
Slate & Shells 2066'DLM 2054	2054	2110
Red Rock	2110	2113
Sand	2113	2164
Slate & Shells	2164	2271
Sand	2271	2286
Slate	2286	2354
Red Rock	2354	2375
Slate	2375	2391
Lime	2391	2455
Red Rock	2455	2466
Slate & Shells	2466	2568

Gas Pays:  
3076' 4/10 W 7" 23# 853 MCF  
3083-89 50/10 M 3" 2,475 MCF  
3089-97' 42/10 M 7" 23# 10,206 MCF

CASING RECORD

4-12-52 13 3/8" casing. Ran 20 bags aquagel. Pumped plug to 310'. Good circulation and returns.

4-17-52 10 3/4" casing. Ran 28 sacks aquagel. Pumped plug to 1100'.

5-24-52 8 5/8" casing. Ran 22 sacks aquagel. Pumped plug to 1700'. Good circulation and returns.

6-20-52 7" casing. Ran 20 sacks aquagel. Pumped plug to 2734'. Good circulation and returns.

Columbian Carbon Company Crew



STATE OF WEST VIRGINIA  
DEPARTMENT OF MINES  
OIL AND GAS DIVISION  
Drill Deeper  
WELL RECORD

Rotary   
Spudder   
Cable Tools   
Storage

Quadrangle Gilbert 3 NW  
Permit No. LOG-293 DD

Oil or Gas Well Gas  
(KIND)

Company Cities Service Oil Company  
Address Box 873, Charleston, W. Va. 25323  
Farm Chafin Land Company Acres 774.04  
Location (waters) Brush Lick  
Well No. 1-GW-1179 Elev. 1617.45'  
District Triadelphia County Logan  
The surface of tract is owned in fee by Chafin Land Co.  
Chafin Land Bldg. Address Huntington, W. Va.  
Mineral rights are owned by same  
Address \_\_\_\_\_

Drilling commenced DD 4-19-65  
Drilling completed DD 4-21-65  
Date Shot not shot From \_\_\_\_\_ To \_\_\_\_\_  
With \_\_\_\_\_

Open Flow \_\_\_\_\_ /10ths Water in \_\_\_\_\_ Inch  
\_\_\_\_\_ /10ths Merc. in \_\_\_\_\_ Inch

Volume \_\_\_\_\_ Cu. Ft.  
Rock Pressure \_\_\_\_\_ lbs. \_\_\_\_\_ hrs.  
Oil \_\_\_\_\_ bbls., 1st 24 hrs.

WELL ACIDIZED not acidized  
WELL FRACTURED not fractured

Casing and Tubing	Used in Drilling	Left in Well	Packers
Size			Kind of Packer
16			
13			
10	<u>no additional pipe run</u>		Size of
8 1/4	<u>when deepened</u>		Depth set
6 1/2			
5 3/16			
3			Perf. top
2 3/8"	<u>3082'</u>	<u>pulled</u>	Perf. bottom
Liners Used	<u>when deepened</u>		Perf. top
			Perf. bottom

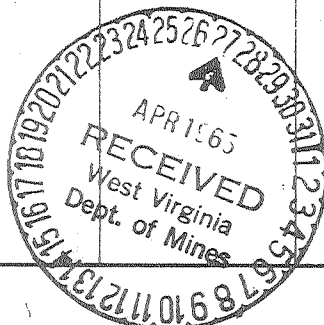
CASING CEMENTED \_\_\_\_\_ SIZE \_\_\_\_\_ No. Ft. \_\_\_\_\_ Date \_\_\_\_\_  
no add. casing run  
COAL WAS ENCOUNTERED AT \_\_\_\_\_ FEET \_\_\_\_\_ INCHES  
\_\_\_\_\_ FEET \_\_\_\_\_ INCHES \_\_\_\_\_ FEET \_\_\_\_\_ INCHES  
\_\_\_\_\_ FEET \_\_\_\_\_ INCHES \_\_\_\_\_ FEET \_\_\_\_\_ INCHES

RESULT AFTER TREATMENT After cleaning out and drilling deeper 174 MCF from Big Lime  
ROCK PRESSURE AFTER TREATMENT 17 hours 46#

Fresh Water \_\_\_\_\_ Feet \_\_\_\_\_ Salt Water \_\_\_\_\_ Feet \_\_\_\_\_

Formation	Color	Hard or Soft	Top	Bottom	Oil, Gas or Water	Depth	Remarks
<u>Old total depth</u>							
Big Lime			2852	3099			
<u>Drilled Deeper</u>							
Big Lime			3099	3123	Gas 3110-18' incr. to 174 MCF		
Big Injun			3123	3153'			
<u>Drilled deeper total depth-----</u>				3153'			

Before drilling deeper and cleaning out gas gauged 23 MCF into the line - final open flow after cleaning out and drilling deeper 174 MCF from Big Lime.







DETAILS OF PERFORATED INTERVALS, FRACTURING OR STIMULATING, PHYSICAL CHANGE, ETC.

Devonian Shale 5657-5464 Frac'd w/ 60,000# 20/40 sd, 1091 MSCF N2, TL&T 144, 45 BPM Foam  
 Devonian Shale 5356-4744 Frac'd w/ 75,000# 20/40 sd, 1047 MSCF N2, TL&T 187, 50 BPM Foam  
 Devonian Shale 3826-4588 Frac'd w/ 75,000# 20/40 sd, 907 MSCF N2, TL&T 144, 70 BPM Foam  
 Berea 3706-14 Frac'd w/ 50,000# 20/40 sd, 392 MSCF N2, TL&T 205, 20 BPM Foam  
 Sunbury Shale 3672-93, Frac'd w/ 25,000# 20/40 sd, 251 MSCF N2, TL&T 154, 20 BPM Foam

**RECEIVED**  
 FEB 29 1988

WELL LOG

DIVISION OF OIL & GAS  
 DEPARTMENT OF ENERGY

FORMATION	COLOR	HARD OR SOFT	TOP FEET	BOTTOM FEET	REMARKS
					Including indication of all fresh and salt water, coal, oil and gas
Big Lime			2852	3100	
Sunbury Shale			3100	3695	
Berea			3695	3715	
Devonian Shale			3715	5720	
Onondaga			5720	5750	
					new TD 5750 old TD 3153 new fty 1597

(Attach separate sheets as necessary)

Cities Service Oil and Gas Corporation  
 Well Operator

By: Paul D. Phillips Operations Manager

Date: February 26, 1988

Note: Regulation 2.02(i) provides as follows:  
 "The term 'log' or 'well log' shall mean a systematic detailed geological record of all formations, including coal, encountered in the drilling of a well."  
 4053