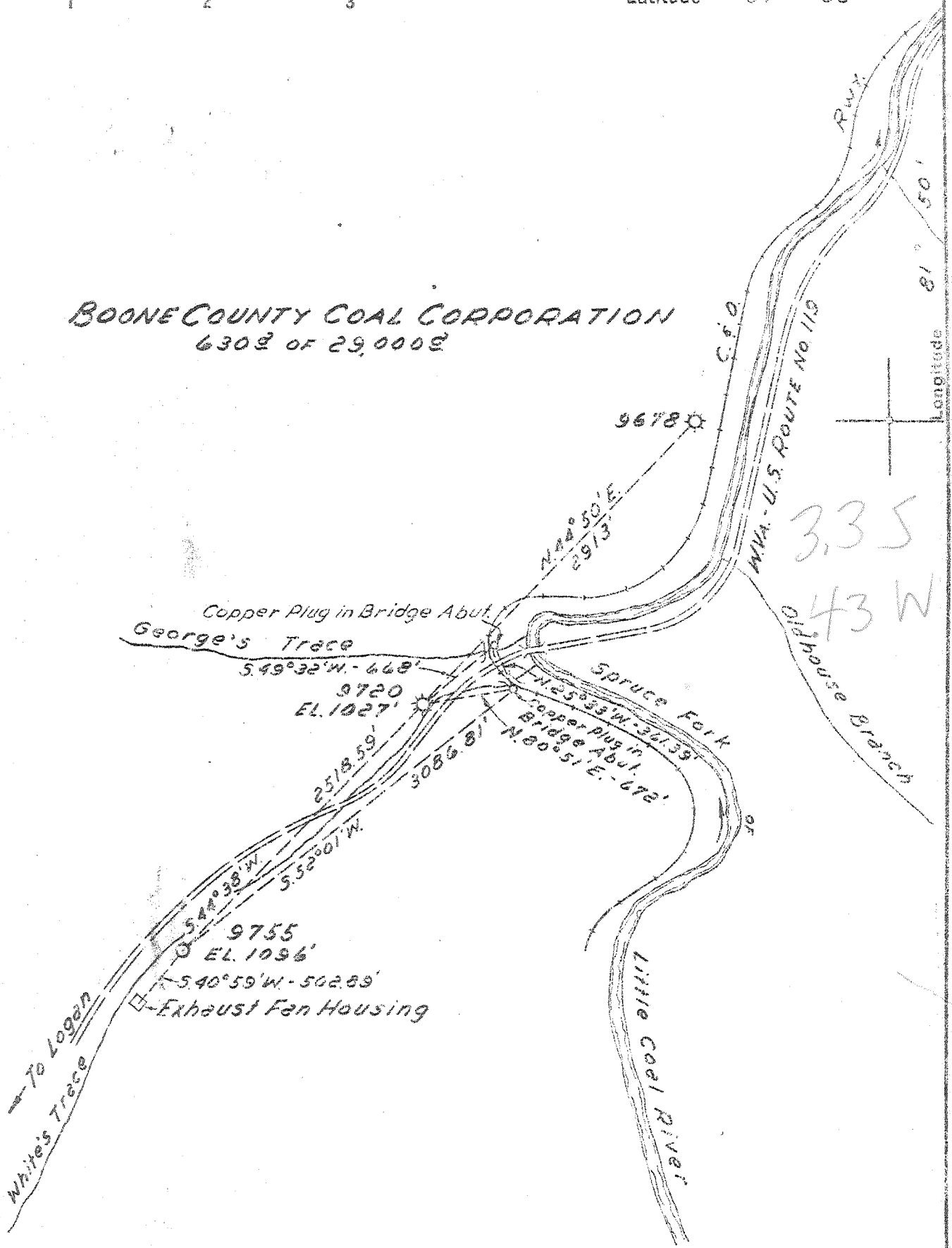


Latitude 37° 55'

# BOONE COUNTY COAL CORPORATION

6302 OF 29,000E



- New Location...
- Drill Deeper...
- Abandonment...

MAP 5H 184 W. 5Q. S. 108 W. 71 FB 1047 P 15-18

Company	HOPE NATURAL GAS CO.
Address	CLARKSBURG, W.VA.
Farm	BOONE COUNTY COAL CORP.
Tract	Acres 29,000 Lease No. 60352
Well (Farm) No.	Serial No. 9755
Elevation (Spirit Level)	1096'
Quadrangle	LOGAN
County	LOGAN District LOGAN
Engineer	Jay M. Bradley
Engineer's Registration No.	2425
File No.	Drawing No.
Date	JULY 23 1952 Scale 1"=1000'

STATE OF WEST VIRGINIA  
DEPARTMENT OF MINES  
OIL AND GAS DIVISION  
CHARLESTON

## WELL LOCATION MAP

FILE NO. LOG-303

+ Denotes location of well on United States Topographic Maps, scale 1 to 62,500, latitude and longitude lines being represented by border lines as shown.

- Denotes one inch spaces on border line of original tracing.

6-6-52

3504



STATE OF WEST VIRGINIA  
DEPARTMENT OF MINES  
OIL AND GAS DIVISION

WELL RECORD

Permit No. LOG 303

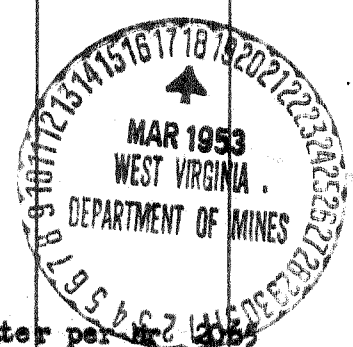
Oil or Gas Well (KIND)

Company Hope Natural Gas Company  
Address 445 West Main St., Clarksburg, W. Va.  
Farm Boone County Coal Corp. Acres 29,000  
Location (waters) \_\_\_\_\_  
Well No. 9755 Elev. 1096  
District Logan County Logan  
The surface of tract is owned in fee by \_\_\_\_\_  
Address \_\_\_\_\_  
Mineral rights are owned by \_\_\_\_\_  
Address \_\_\_\_\_  
Drilling commenced November 11, 1952  
Drilling completed February 27, 1953  
Date Shot not From \_\_\_\_\_ To \_\_\_\_\_  
With \_\_\_\_\_  
Open Flow /10ths Water in \_\_\_\_\_ Inch  
/10ths Merc. in \_\_\_\_\_ Inch  
Volume 43,000 Cu. Ft.  
Rock Pressure \_\_\_\_\_ lbs. \_\_\_\_\_ hrs.  
Oil \_\_\_\_\_ bbls., 1st 24 hrs.  
Fresh water 330 feet \_\_\_\_\_ feet  
Salt water 1450 1645 2065 feet \_\_\_\_\_ feet

Casing and Tubing	Used in Drilling	Left in Well	Packers
Size			
16			Kind of Packer
12			
10	538	538	Size of
8 1/4	1659	1659	
6 3/4	2341	2341	Depth set
5 3/16			
3			Perf. top
2			Perf. bottom
Liners Used			Perf. top
			Perf. bottom

1 10" Gelled to surface  
CASING CEMENTED SIZE \_\_\_\_\_ No. Ft. \_\_\_\_\_ Date \_\_\_\_\_  
7" Gelled to surface.  
COAL WAS ENCOUNTERED AT 61 FEET 36 INCHES  
326 FEET 72 INCHES 420 FEET 24 INCHES  
502 FEET 36 INCHES \_\_\_\_\_ FEET \_\_\_\_\_ INCHES

Formation	Color	Hard or Soft	Top	Bottom	Oil, Gas or Water	Depth Found	Remarks
Surface			0	61			
Coal			61	64			
Slate			64	67			
Sand			67	217			
Slate shell			217	289			
Sand			289	305			
Slate shell			305	326			
Coal			326	332			
Lime shell			332	375			
Slate			375	390			
Sand			390	415			
Lime			415	420			
Coal			420	422			
Slate shell			422	502			
Coal			502	505			
Slate shell			505	519			
Sand			519	576			
Slate shell			576	745			
Sand			745	775			
Slate shell			775	850			
Hard sand			850	964			
Slate shell			964	985			
Sand			985	1190			
Slate shell			1190	1351			
SALT SAND			1351	1516			
Slate shell			1516	1550			water 2 bbl. per hr 1450
Salt sand			1550	1658			hole full water 1645
Slate			1658	1662			
Sand			1662	1695			
Slate shell			1695	1760			
Gray sand			1760	1780			
Slate			1780	1796			
Third Salt			1796	1821			
Slate shell			1821	1887			
Red rock			1887	1910			
Lime			1910	1949			
Red rock			1949	1967			
Slate shell			1967	2052			
MAKON			2052	2076			1 bbl. water per hr 2055



Formation	Color	Hard or Soft	Top 5'	Bottom	Oil, Gas or Water	Depth Found	Remarks
Red rock			2076	2103			
Slate shell			2103	2158			
Red rock			2158	2174			
Lime shell			2174	2182			
Red rock			2182	2186			
Slate shell			2186	2198			
Hard lime			2198	2216			
Slate			2216	2244			
Little lime			2244	2273			
Pencil cave			2273	2276			
Big Lime			2276	2573	gas 2375	2501 2525	
Red sand soft			2573	2600			
Hard grey sand			2600	2826			
Slate shell			2826	3030			
Br. shale			3030	3056	gas	3056	
BRNSA			3-36	3086			
Total depth				3105			

Date March 17, 1953, 19

APPROVED Hope Natural Gas Company, Owner

By [Signature]