

WW-7
8-30-06



West Virginia Department of Environmental Protection
Office of Oil and Gas

WELL LOCATION FORM: GPS

API: 47-045-00511 WELL NO.: 2

FARM NAME: Caldwell & Harless

RESPONSIBLE PARTY NAME: Top Drilling Corporation

COUNTY: Logan DISTRICT: Logan

QUADRANGLE: Logan

SURFACE OWNER: West Virginia DOH

ROYALTY OWNER: West Virginia DOH

UTM GPS NORTHING: 4183930.440

UTM GPS EASTING: 416997.846 GPS ELEVATION: 217.48M/713.52FT

The Responsible Party named above has chosen to submit GPS coordinates in lieu of preparing a new well location plat for a plugging permit or assigned API number on the above well. The Office of Oil and Gas will not accept GPS coordinates that do not meet the following requirements:

1. Datum: NAD 1983, Zone: 17 North, Coordinate Units: meters, Altitude: height above mean sea level (MSL) – meters.
2. Accuracy to Datum – 3.05 meters
3. Data Collection Method:

Survey grade GPS : Post Processed Differential _____
Real-Time Differential

Mapping Grade GPS _____ : Post Processed Differential _____
Real-Time Differential _____

4. Letter size copy of the topography map showing the well location.

I the undersigned, hereby certify this data is correct to the best of my knowledge and belief and shows all the information required by law and the regulations issued and prescribed by the Office of Oil and Gas.

[Signature]
Signature

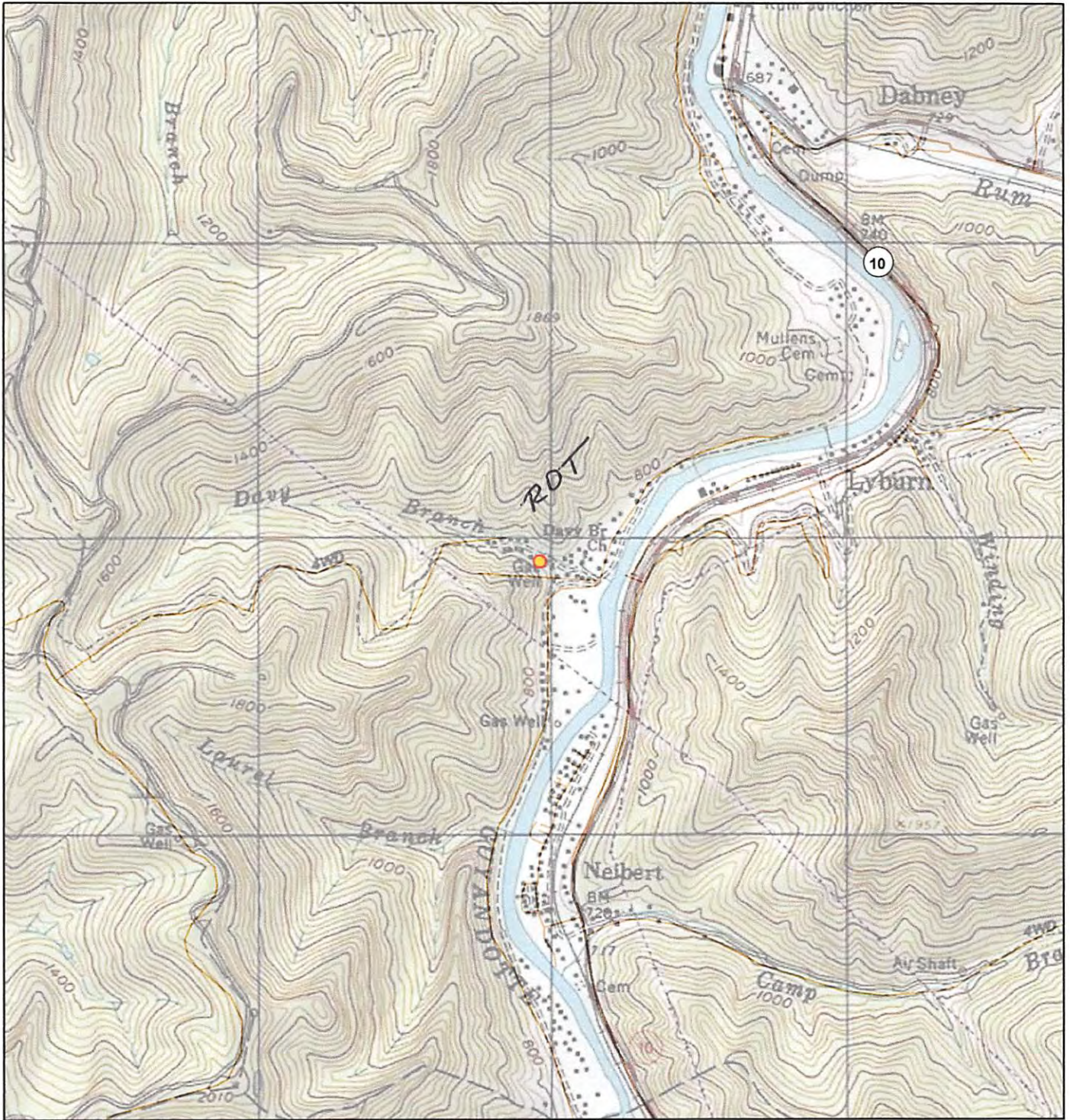
V.P. of Operations
Title

JUN 10 2013
5/29/13
Date

Office of Oil and Gas
WV Dept. of Environmental Protection

Received

4506511P



Logan Quadrangle

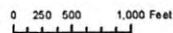
Top Drilling Corporation

Caldwell & Harless #2
API - 47-045-00511

Logan District

Logan County

West Virginia



Received

JUN 10 2013

Office of Oil and Gas
WV Dept. of Environmental Protection