

WW-7  
8-30-06



West Virginia Department of Environmental Protection  
Office of Oil and Gas

**WELL LOCATION FORM: GPS**

API: 47-045-00861 WELL NO.: 3

FARM NAME: Cole & Crane

RESPONSIBLE PARTY NAME: Top Drilling Corporation

COUNTY: Logan DISTRICT: Logan

QUADRANGLE: Logan

SURFACE OWNER: West Virginia DOH

ROYALTY OWNER: West Virginia DOH

UTM GPS NORTHING: 4183024.337

UTM GPS EASTING: 416822.109 GPS ELEVATION: 213.85M/701.61 FT

The Responsible Party named above has chosen to submit GPS coordinates in lieu of preparing a new well location plat for a plugging permit or assigned API number on the above well. The Office of Oil and Gas will not accept GPS coordinates that do not meet the following requirements:

1. Datum: NAD 1983, Zone: 17 North, Coordinate Units: meters, Altitude: height above mean sea level (MSL) – meters.
2. Accuracy to Datum – 3.05 meters
3. Data Collection Method:

Survey grade GPS  : Post Processed Differential \_\_\_\_\_  
Real-Time Differential

Mapping Grade GPS \_\_\_\_\_ : Post Processed Differential \_\_\_\_\_  
Real-Time Differential \_\_\_\_\_

Received

JUN 10 2013

Office of Oil and Gas  
WV Dept. of Environmental Protection

4. **Letter size copy of the topography map showing the well location.**

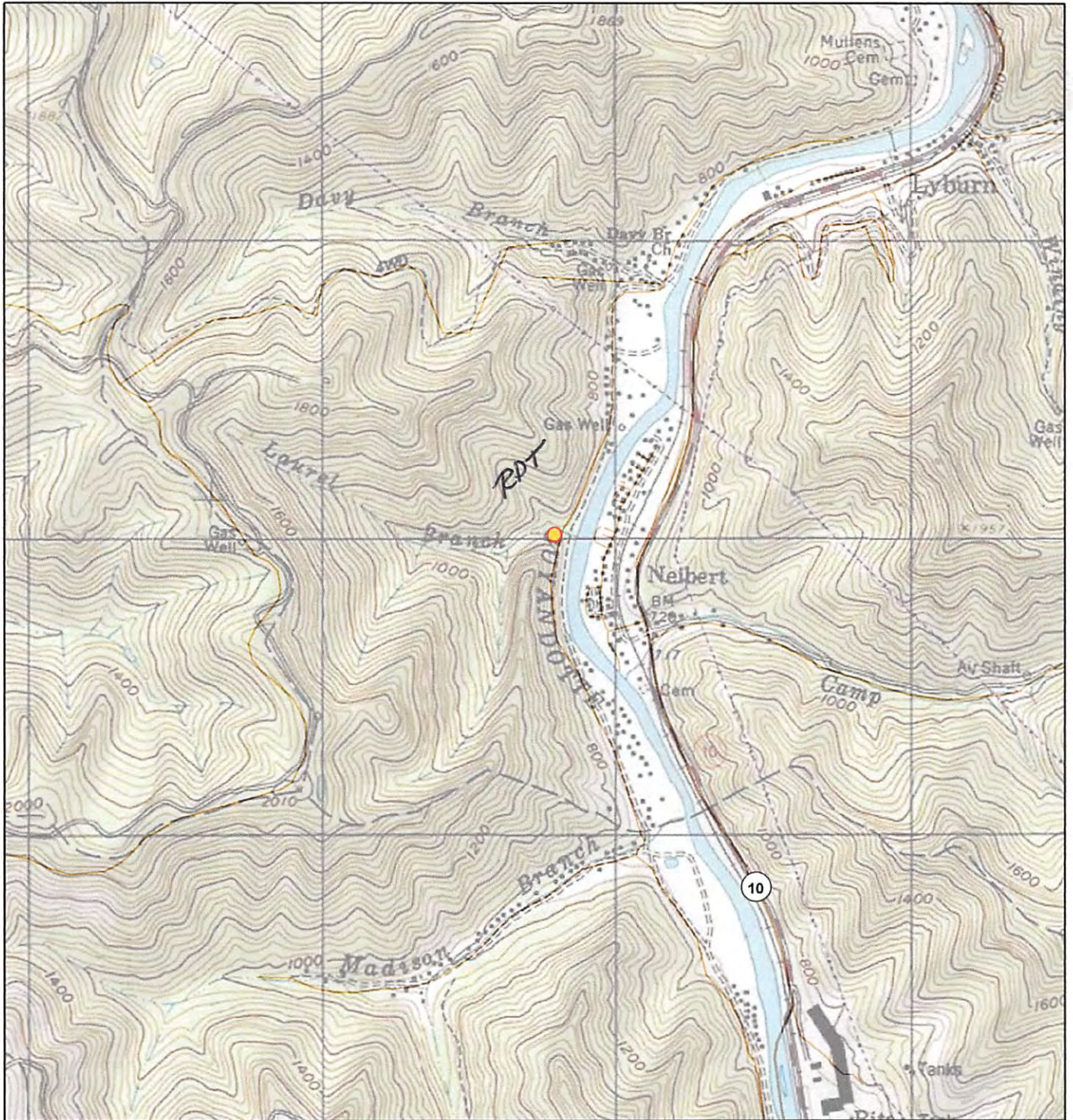
I the undersigned, hereby certify this data is correct to the best of my knowledge and belief and shows all the information required by law and the regulations issued and prescribed by the Office of Oil and Gas.

[Signature]  
Signature

V.P. of Operations  
Title

5/29/13  
Date





Logan Quadrangle

**Top Drilling Corporation**

Cole & Crane  
API - 47-045-00861

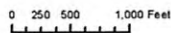
Logan District

Logan County

West Virginia

Received

JUN 10 2013



Office of Oil and Gas  
WV Dept. of Environmental Protection