



West Virginia Department of Environmental Protection  
Office of Oil and Gas  
**WELL LOCATION FORM: GPS**

API: 47-045-01035 P WELL NO.: WV 085231 (Pardee #66)

FARM NAME: Pardee

RESPONSIBLE PARTY NAME: EQT Production Company

COUNTY: Logan DISTRICT: Logan

QUADRANGLE: Lorado 7.5'

SURFACE OWNER: Pardee Minerals LLC

ROYALTY OWNER: Pardee Minerals LLC

UTM GPS NORTHING: 4186554

UTM GPS EASTING: 435069 GPS ELEVATION: 613 m (2011 ft)

The Responsible Party named above has chosen to submit GPS coordinates in lieu of preparing a new well location plat for a plugging permit or assigned API number on the above well. The Office of Oil and Gas will not accept GPS coordinates that do not meet the following requirements:

- Datum: NAD 1983, Zone: 17 North, Coordinate Units: meters, Altitude: **RECEIVED**  
height above mean sea level (MSL) – meters. **Office of Oil & Gas**
- Accuracy to Datum – 3.05 meters
- Data Collection Method:  
Survey grade GPS  : Post Processed Differential   
Real-Time Differential   
Mapping Grade GPS  : Post Processed Differential   
Real-Time Differential
- Letter size copy of the topography map showing the well location.**

JAN 13 2012

WV Department of Environmental Protection

I the undersigned, hereby certify this data is correct to the best of my knowledge and belief and shows all the information required by law and the regulations issued and prescribed by the Office of Oil and Gas.

Ben R. Singleton  
Signature

P.S.  
Title

1-6-2012  
Date

Topo Quad: Lorado

Scale: 1" = 2000'

County: Logan

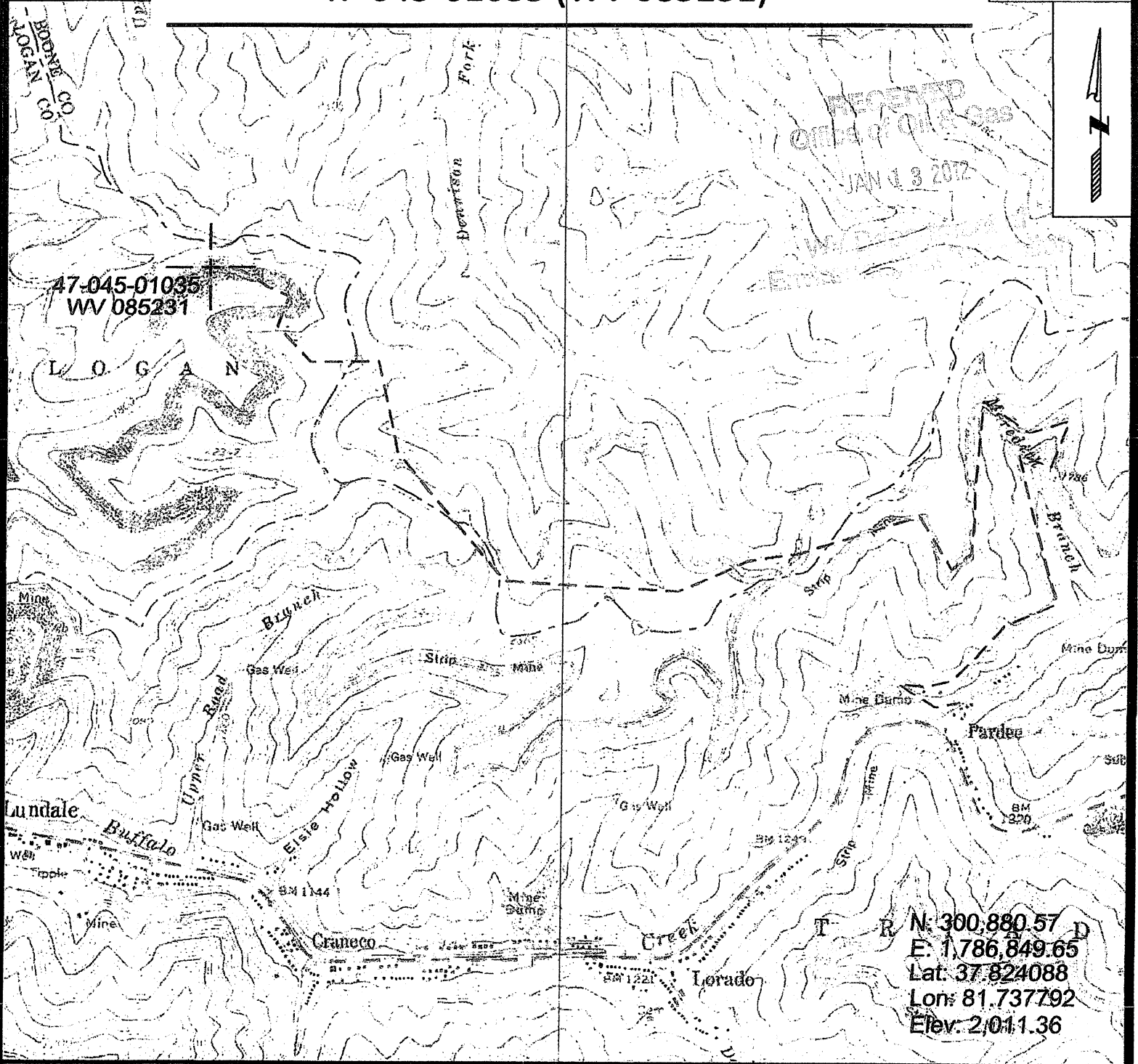
Date: Jan 5, 2012 45-01035P

District: Logan

Project No: 21-21-00-08

# 47-045-01035 (WV 085231)

Topo



T R N: 300,880.57 D  
 E: 1,786,849.65  
 Lat: 37.824088  
 Lon: 81.737792  
 Elev: 2,011.36



SURVEYING AND MAPPING SERVICES PERFORMED BY:  
**ALLEGHENY SURVEYS, INC.**  
 1-800-482-8606  
 P.O. BOX 438  
 BIRCH RIVER, WV 26610  
 PH: (304) 649-8606  
 FAX: (304) 649-8608

PREPARED FOR:  
**EQT Production Company**  
 1710 Pennsylvania Ave.  
 Charleston, WV 25302