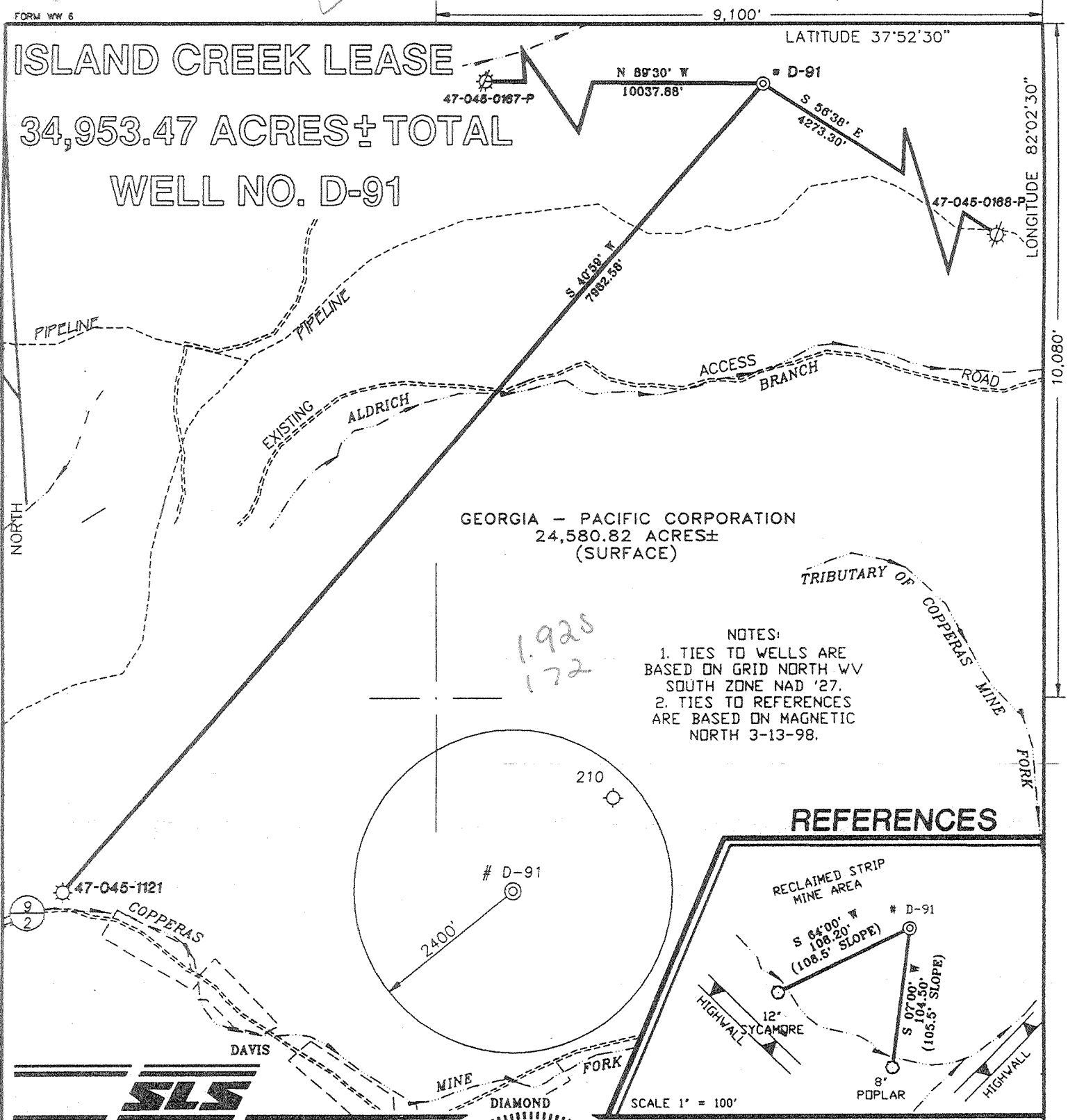


ISLAND CREEK LEASE

34,953.47 ACRES± TOTAL

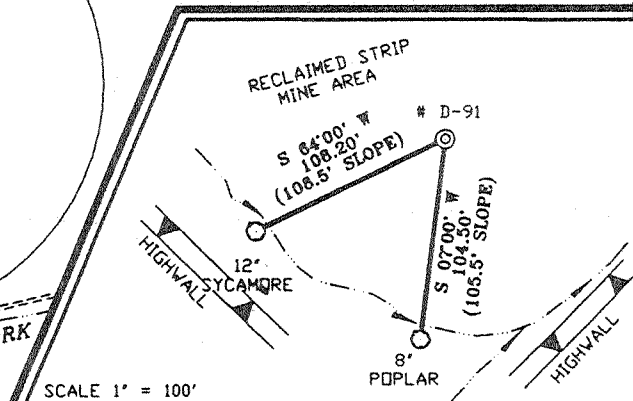
WELL NO. D-91



GEORGIA - PACIFIC CORPORATION
24,580.82 ACRES±
(SURFACE)

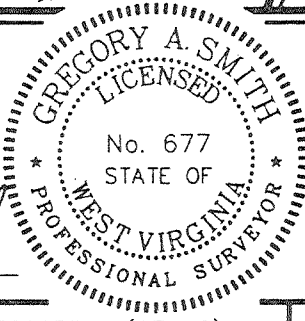
- NOTES:
1. TIES TO WELLS ARE BASED ON GRID NORTH WV SOUTH ZONE NAD '27.
2. TIES TO REFERENCES ARE BASED ON MAGNETIC NORTH 3-13-98.

REFERENCES



I THE UNDERSIGNED, HEREBY CERTIFY THAT THIS PLAT IS CORRECT TO THE BEST OF MY KNOWLEDGE AND BELIEF AND SHOWS ALL THE INFORMATION REQUIRED BY LAW AND THE REGULATIONS ISSUED AND PRESCRIBED BY THE DEPARTMENT OF ENERGY.

P.S. *Gregory A. Smith*
677



(+) DENOTES LOCATION OF WELL ON UNITED STATES TOPOGRAPHIC MAPS.
DATE APRIL 23, 19 98
OPERATORS WELL NO. ISLAND CREEK D-91
API WELL NO. 47-045-01279
STATE COUNTY PERMIT

MINIMUM DEGREE OF ACCURACY 1 / 2500 FILE NO. 3890PD91 (67-12)
PROVEN SOURCE OF ELEVATION CABIN HILL TRIANGULATION STATION ELEV. 1844'
SCALE 1" = 1000'

STATE OF WEST VIRGINIA
DIVISION OF ENVIRONMENTAL PROTECTION
OFFICE OF OIL AND GAS



WELL TYPE : OIL GAS LIQUID INJECTION WASTE DISPOSAL IF "GAS" PRODUCTION STORAGE DEEP SHALLOW

LOCATION :
ELEVATION 959' WATERSHED MUD FORK OF COPPERAS MINE FORK
DISTRICT ISLAND CREEK COUNTY LOGAN QUADRANGLE HOLDEN 7.5'

SURFACE OWNER GEORGIA - PACIFIC CORPORATION ACREAGE 24,580.82
ROYALTY OWNER ISLAND CREEK COAL COMPANY LEASE ACREAGE 34,953.47

PROPOSED WORK :
DRILL CONVERT DRILL DEEPER REDRILL FRACTURE OR STIMULATE PLUG OFF OLD FORMATION PERFORATE NEW FORMATION PLUG AND ABANDON CLEAN OUT AND REPLUG OTHER
PHYSICAL CHANGE IN WELL (SPECIFY) _____ TARGET FORMATION DEVONIAN SHALE
ESTIMATED DEPTH 4600'

WELL OPERATOR BLAZER ENERGY CORPORATION DESIGNATED AGENT ROBERT ALLEY
ADDRESS P.O. BOX 2347 CHARLESTON, WV 25328 ADDRESS P.O. BOX 2347 CHARLESTON, WV 25328
DRAG WELL G-6 274

COUNTY NAME LOGAN
PERMIT 1279

WR-35

18-May-98

API # 47- 45-01279

State of West Virginia
Division of Environmental Protection
Section of Oil and Gas

Reviewed AS

Well Operator's Report of Well Work

Farm name: GEORGIA PACIFIC CORP Operator Well No.: ISLAND CK D-91

LOCATION: Elevation: 959.00 Quadrangle: HOLDEN

District: ISLAND CREEK County: LOGAN
Latitude: 10080 Feet South of 37 Deg. 52Min. 30 Sec.
Longitude 9100 Feet West of 82 Deg. 2 Min. 30 Sec.

Company: BLAZER ENERGY CORPORATION
1710 Pennsylvania Ave.
Charleston, WV 25328

Agent: ROBERT ALLEY

Inspector: OFIE HELMICK
Permit Issued: 05/18/98
Well work Commenced: 05/30/98
Well work Completed: 08/01/98
Verbal Plugging _____
Permission granted on: _____
Rotary X Cable _____ Rig _____
Total Depth (feet) 4244'
Fresh water depths (ft) _____
15', 80', 114', 145'
Salt water depths (ft) 950'

Casing & Tubing Size	Used in Drilling	Left in Well	Cement Fill Up Cu. Ft.
16"	30'	30'	
13-3/8"	61'	61'	
9-5/8"	531.20'	531.20'	296 FT ³
7"	1708.90'	1708.90'	315 FT ³
4-1/2"	4225'	4225'	397 FT ³
2-3/8"		4120'	

Is coal being mined in area (Y/N)? _____
Coal Depths (ft): Open Mine 186'

OPEN FLOW DATA

Producing formation U Shale/Berea Pay zone depth (ft) _____
 Gas: Initial open flow 60 MCF/d Oil: Initial open flow _____ Bbl/d
 Final open flow 119 MCF/d Final open flow _____ Bbl/d
 Time of open flow between initial and final tests _____ Hours
 Static rock Pressure 197 psig (surface pressure) after _____ Hours

Second producing formation _____ Pay zone depth (ft) _____
 Gas: Initial open flow _____ MCF/d Oil: Initial open flow _____ Bbl/d
 Final open flow _____ MCF/d Final open flow _____ Bbl/d
 Time of open flow between initial and final tests _____ Hours
 Static rock Pressure _____ psig (surface pressure) after _____ Hours

NOTE: ON BACK OF THIS FORM PUT THE FOLLOWING: 1). DETAILS OF PERFORATED INTERVALS, FRACTURING OR STIMULATING, PHYSICAL CHANGE, ETC. 2). THE WELL LOG WHICH IS A SYSTEMATIC DETAILED GEOLOGICAL RECORD OF ALL FORMATIONS, INCLUDING COAL ENCOUNTERED BY THE WELLBORE.

RECEIVED
Office of Oil & Gas
Permitting
FEB 24 1998
Division of
Environmental Protection

For: BLAZER ENERGY CORPORATION
By: _____
Date: _____

MAR 08 1999

661 907
1379

EASTERN STATES OIL & GAS, INC.
WR-35 COMPLETION REPORT - Attachment
Well Treatment Summary

Well: ISLAND CREEK D-91

API: 47-045-01279

Date	1 st Stage	2 nd Stage	3 rd Stage	4 th Stage	5 th Stage
Type Frac					
Acid, N ₂ , Foam, Water	N ²	N ²	N ²	N ²	
Zone Treated	L. Shale	U. Shale	Berea	B. Lime/Weir	
# Perfs	20	55	17	38	
From - To:	3837-4171	2592-3738	2437-2445	1800-1958	
BD Pressure @ psi	3700	2230	2420	350	
ATP psi	3254	2356	2172	1224	
Avg. Rate, B=B/M, S= SCF/M	50,000 S	52,000 S	52,000 S	47,000 S & 4.5 B	
Max. Treat Press psi	3954	2581	2258	2109	
ISIP psi	3000	1860	1250	900	
Frac Gradient	.83	.65	.54	.47	
10 min S-I Pressure	1935	1525	850	625	
Material Volume					
Sand-sks					
Water-bbl					
SCF N ₂	500,000 S		500,000 S	525,000 S	
Acid-gal		28 B 7-1/2%	10 B 7-1/2%	2,500 15%	
NOTES:					

Formation Record

TOP	BOTTOM	FORMATION	Remarks
0	48	Fill	2" stream water 15'
48	100	Sand Shale	1/2" stream water 80'
100	177	W. Sand	1-1/2" stream water 114' 4-1/2" to 5" stream water 145' Open Mine @ 186'
177	220	Sand Shale	
220	255	Sand	
255	599	Sand Shale	
599	1170	Salt Sand	Hole damp @ 950' GT @ 1253 N/S
1428		Upper Maxton	
1562		Lower Maxton	
1613	1660	Little Lime	
1660	1907	Big Lime	GT @ 1752' N/S GT @ 1938' N/S
2025	2104	Weir	GT @ 2084' N/S GT @ 2373' N/S
2409	2438	Sunbury	
2438	2474	Berea	
2474	3425	Upper Huron	GT @ 2498' 59 MCF/D GT @ 2688' 84 MCF/D GT @ 3349' 59 MCF/D

RECEIVED
Office of Oil & Gas
Permitting
FEB 24 1995
Environmental Protection

645 1279

2592		Gordon	
3425	3732	Lower Huron	
3732	3853	Java	
3853	4046	Angola	GT @ 3986' 59 MCF/D
4046		Rhinestreet	
4244	TD	Onondaga	

RECEIVED
Office of Oil & Gas
Permitting

FEB 24 1999

WV Division of
Environmental Protection

645 1279

MAR 08 1999