

4501558 P

WW-7  
8-30-06



West Virginia Department of Environmental Protection  
Office of Oil and Gas

WELL LOCATION FORM: GPS

API: 47-045-1558 WELL NO.: 16

FARM NAME: ECA/Yawkey

RESPONSIBLE PARTY NAME: Energy Corporation of America

COUNTY: Logan DISTRICT: Guyan

QUADRANGLE: Henlawson 7.5'

SURFACE OWNER: Ronnie and Sandra Bailey

ROYALTY OWNER: Yawkey Foundation II and Westvarendrag Inc.

UTM GPS NORTHING: 4,197,002.65

UTM GPS EASTING: 417,464.84 GPS ELEVATION: 609 1969 FT

The Responsible Party named above has chosen to submit GPS coordinates in lieu of preparing a new well location plat for a plugging permit or assigned API number on the above well. The Office of Oil and Gas will not accept GPS coordinates that do not meet the following requirements:

1. Datum: NAD 1983, Zone: 17 North, Coordinate Units: meters, Altitude: height above mean sea level (MSL) – meters.
2. Accuracy to Datum – 3.05 meters
3. Data Collection Method:

Survey grade GPS  : Post Processed Differential   
Real-Time Differential

Mapping Grade GPS  : Post Processed Differential   
Real-Time Differential

4. Letter size copy of the topography map showing the well location.

I the undersigned, hereby certify this data is correct to the best of my knowledge and belief and shows all the information required by law and the regulations issued and prescribed by the Office of Oil and Gas.

Alvin Pottery  
Signature

Drilling Engineer  
Title

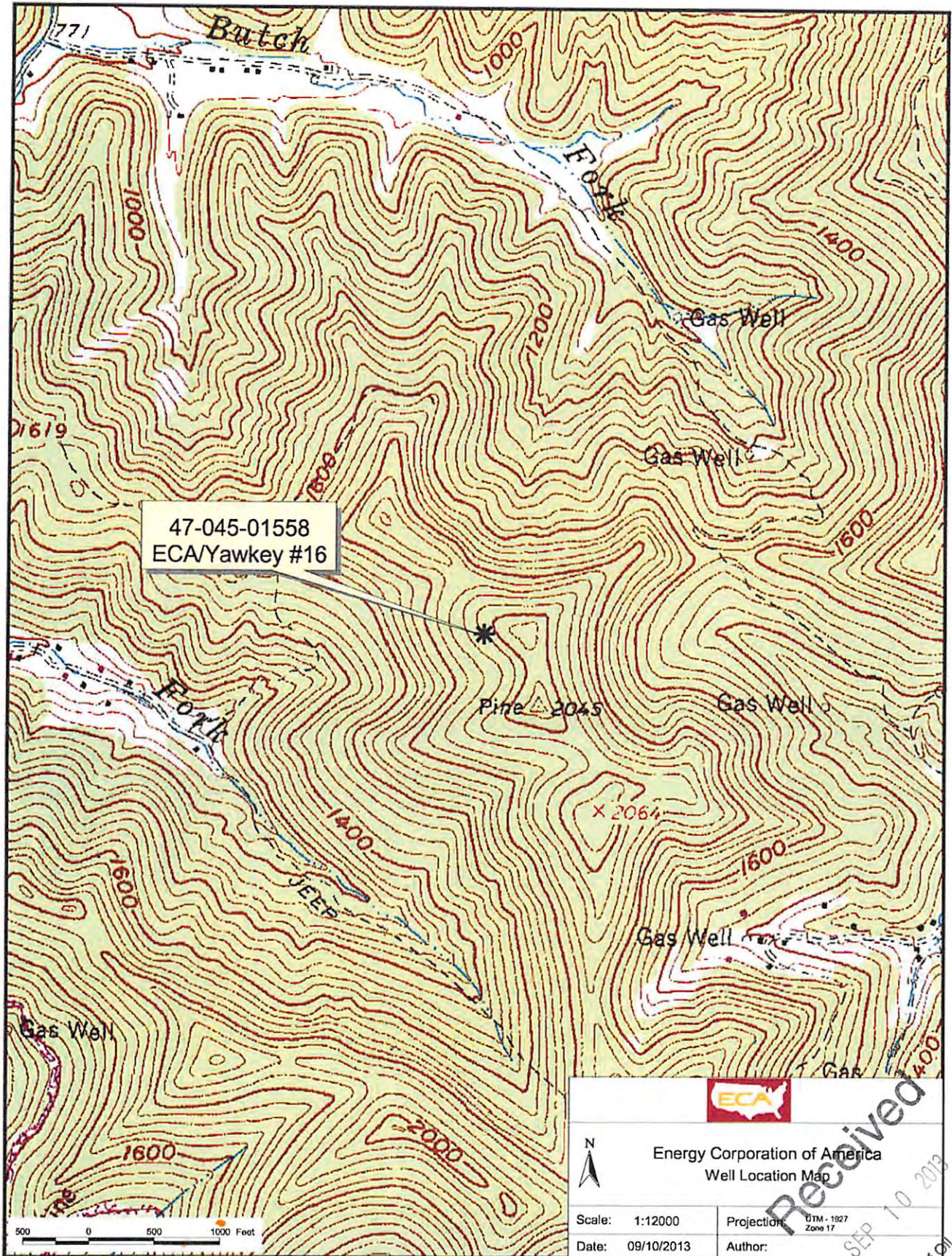
9-10-13  
Date

Received

SEP 10 2013

Office of Oil and Gas  
Dept. of Environmental Protection





Received  
SEP 10 2013

Office of Oil and Gas  
WV Dept. of Environmental Protection