

COLE AND CRANE REAL ESTATE TRUST LEASE

13,292.15 ACRES ± WELL NO. WV 512115

LATITUDE 37° 45' 00"

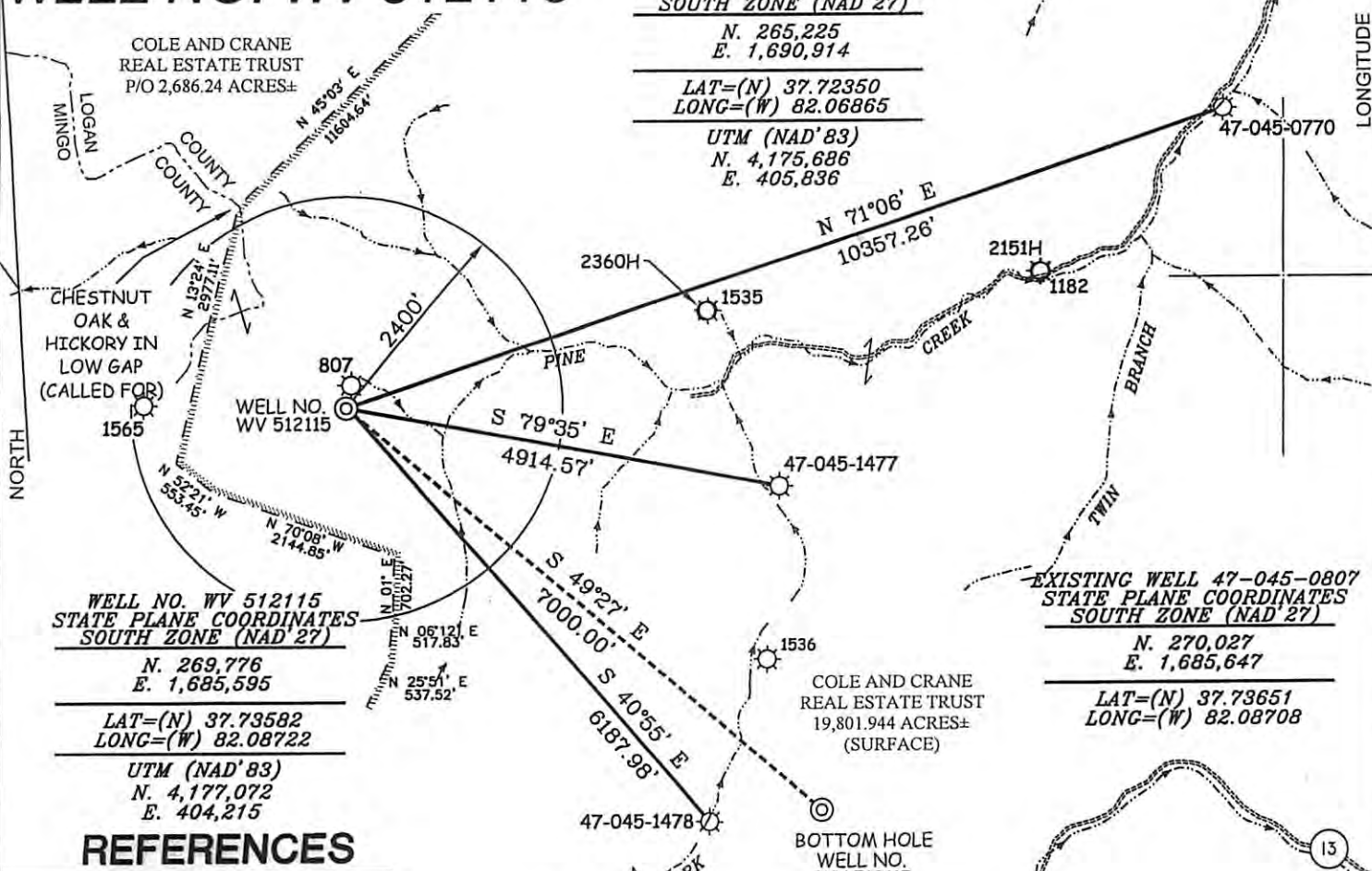
LONGITUDE 82° 05' 00"

BOTTOM HOLE
WELL NO. WV 512115
STATE PLANE COORDINATES
SOUTH ZONE (NAD '27)

N. 265,225
E. 1,690,914

LAT=(N) 37.72350
LONG=(W) 82.06865

UTM (NAD '83)
N. 4,175,686
E. 405,836



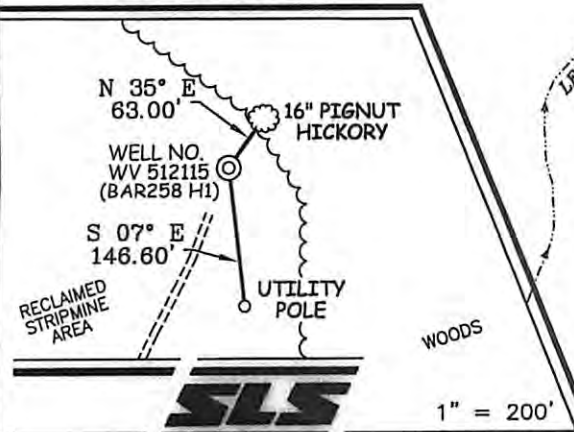
WELL NO. WV 512115
STATE PLANE COORDINATES
SOUTH ZONE (NAD '27)

N. 269,776
E. 1,685,595

LAT=(N) 37.73582
LONG=(W) 82.08722

UTM (NAD '83)
N. 4,177,072
E. 404,215

REFERENCES



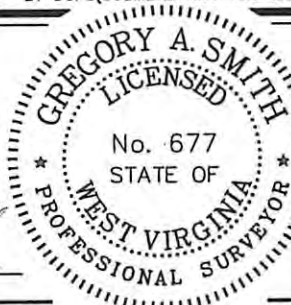
NOTES ON SURVEY

1. TIES TO WELLS AND CORNERS ARE BASED ON GRID NORTH FOR THE WV STATE PLANE COORDINATE SYSTEM SOUTH ZONE NAD '27.
2. TIES TO REFERENCES ARE BASED ON MAGNETIC NORTH 12/11/09.
3. LEASE BOUNDARY SHOWN HEREON TAKEN FROM A MAP SHOWING "PROPERTY OF COLE AND CRANE REAL ESTATE TRUST" DATED JANUARY 1925 BY W.C. McCALL, ENGINEER.
4. SURFACE OWNER AND ADJOINER INFORMATION TAKEN FROM THE ASSESSOR AND COUNTY CLERK RECORDS OF LOGAN COUNTY IN JULY, 2010.
5. WELL LAT./LONG. (NAD'27) ESTABLISHED BY DGPS(SUBMETER MAPPING GRADE).

I THE UNDERSIGNED, HEREBY CERTIFY THAT THIS PLAT IS CORRECT TO THE BEST OF MY KNOWLEDGE AND BELIEF AND SHOWS ALL THE INFORMATION REQUIRED BY LAW AND THE REGULATIONS ISSUED AND PRESCRIBED BY THE DIVISION OF ENVIRONMENTAL PROTECTION.

P.S. 677

Gregory A. Smith



(+) DENOTES LOCATION OF WELL ON UNITED STATES TOPOGRAPHIC MAPS.

DATE NOVEMBER 08, 20 10

OPERATORS WELL NO. WV 512115

API WELL NO. 47 - 045 - 02408H
STATE COUNTY PERMIT

CANCELLED

MINIMUM DEGREE OF ACCURACY 1 / 2500 FILE NO. 3796P512115 (289-50)
PROVEN SOURCE OF ELEVATION DGPS (SUBMETER MAPPING GRADE) SCALE 1" = 2000'

STATE OF WEST VIRGINIA
DIVISION OF ENVIRONMENTAL PROTECTION
OFFICE OF OIL AND GAS



WELL TYPE: OIL GAS LIQUID INJECTION WASTE DISPOSAL IF "GAS" PRODUCTION STORAGE DEEP SHALLOW

LOCATION: ELEVATION 1,517' WATERSHED PINE CREEK
DISTRICT ISLAND CREEK COUNTY LOGAN QUADRANGLE BARNABUS 7.5'

SURFACE OWNER COLE & CRANE REAL ESTATE TRUST ACREAGE 19,801.944±
ROYALTY OWNER COLE & CRANE REAL ESTATE TRUST LEASE ACREAGE 13,292.15±
PROPOSED WORK: LEASE NO. 080574

DRILL CONVERT DRILL DEEPER REDRILL FRACTURE OR STIMULATE PLUG OFF OLD
FORMATION PERFORATE NEW FORMATION PLUG AND ABANDON CLEAN OUT AND REPLUG OTHER

PHYSICAL CHANGE IN WELL (SPECIFY) _____ TARGET FORMATION LOWER HURON
ESTIMATED DEPTH 5,020' (TOTAL VERTICAL DEPTH)

WELL OPERATOR EQT PRODUCTION COMPANY DESIGNATED AGENT REX C. RAY
ADDRESS 1710 PENNSYLVANIA AVE ADDRESS 1710 PENNSYLVANIA AVE
CHARLESTON, WV 25302 CHARLESTON, WV 25302 **01/25/2013**

COUNTY NAME
PERMIT