

Diversified Gas & Oil
Corporation
100 Diversified Way
Pikeville KY, 41051

47-049-00353

Plugging Map

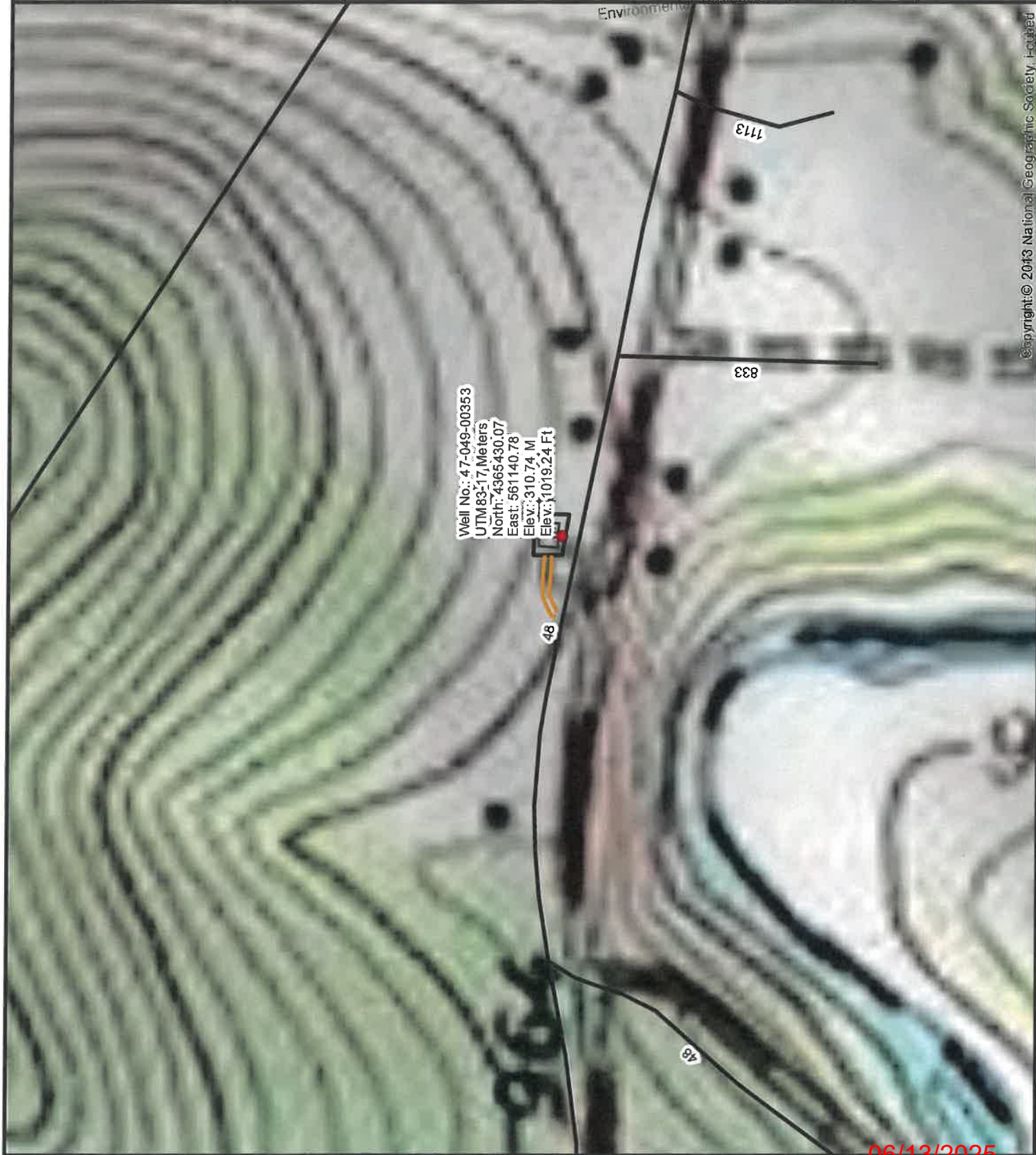
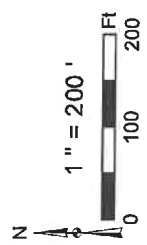
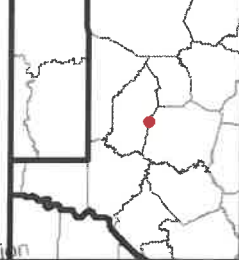
Legend

- Well
- Access Road
- Pits
- Pad
- Public Roads

RECEIVED
Office of Oil and Gas

MAY 30 2025

WV Department of
Environmental Protection



Well No.: 47-049-00353
UTM83-17,Meters
North: 4365430.07
East: 561140.78
Elev.: 310.74 M
Elev.: 1019.24 Ft

Copyright © 2013 National Geographic Society. All rights reserved.



Diversified Gas & Oil
Corporation
100 Diversified Way
Pikeville KY, 41051

47-049-00353

Plugging Map

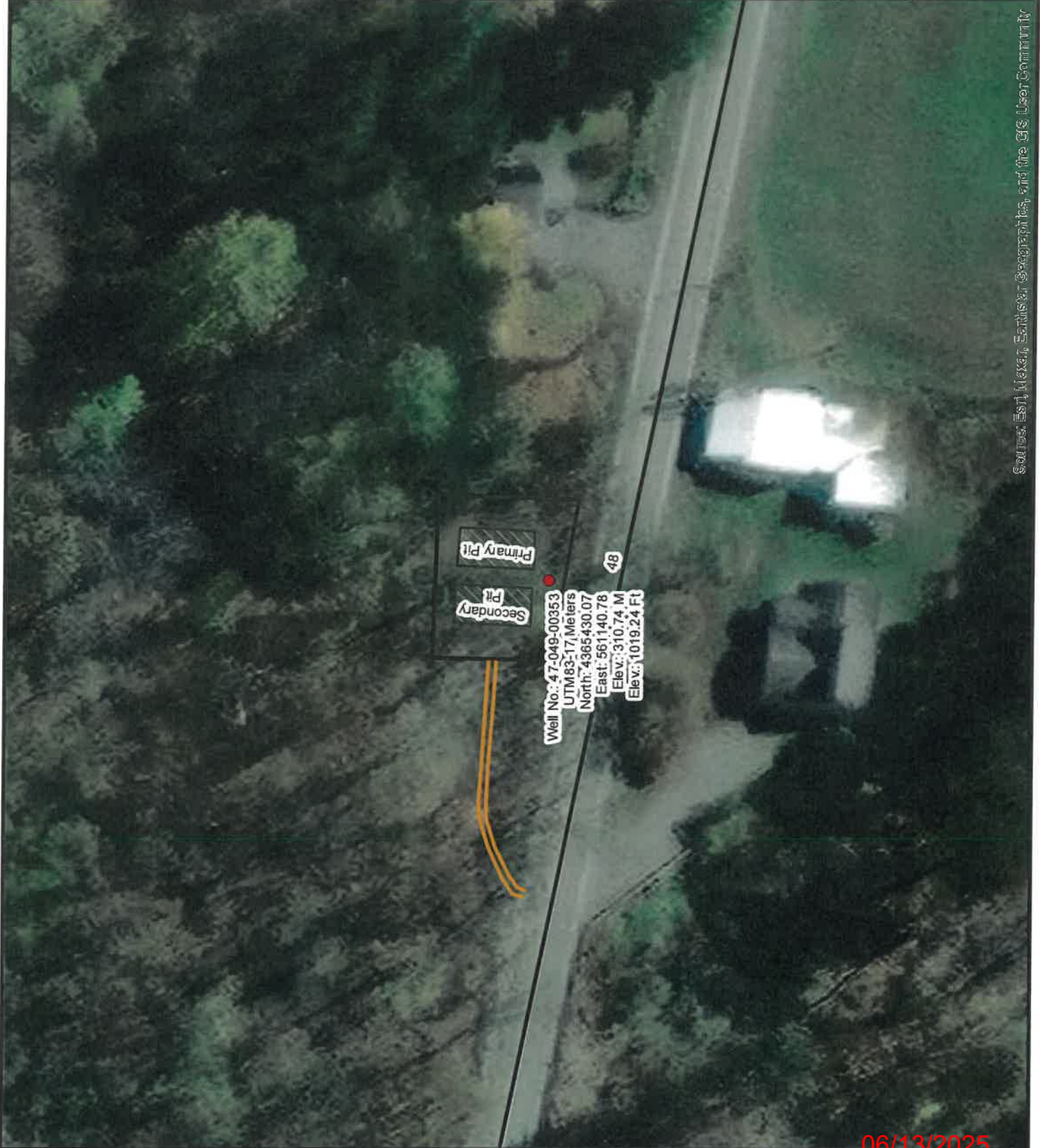
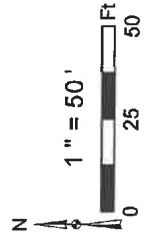
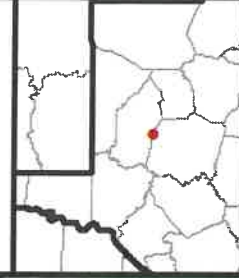
Legend

- Well
- Access Road
- Pits
- Pad
- Public Roads

RECEIVED
Office of Oil and Gas

MAY 30 2025

WV Department of
Environmental Protection



Source: Esri, Maxar, Earthstar, GeoEye, IGN, AerGRID, Airbus, and the GIS User Community

Untitled Map

API No. 47-049-00353 Plugging

Legend

📍 17 s 561140 4365430



Google Earth

Image © 2025 Airbus

06/13/2025

WW-7
8-30-06



West Virginia Department of Environmental Protection
Office of Oil and Gas
WELL LOCATION FORM: GPS

API: 4704900353 WELL NO.: Tetrick W-1370
FARM NAME: Tetrick
RESPONSIBLE PARTY NAME: Diversified Production, LLC
COUNTY: Marion DISTRICT: Mannington
QUADRANGLE: Shinnston 7.5'
SURFACE OWNER: Isaac & Elizabeth Morgan
ROYALTY OWNER: Geraldine Vincent (Agent) & George M. Ralphysnyder
UTM GPS NORTHING: 4365430.07
UTM GPS EASTING: 561140.78 GPS ELEVATION: 1019.24'

The Responsible Party named above has chosen to submit GPS coordinates in lieu of preparing a new well location plat for a plugging permit or assigned API number on the above well. The Office of Oil and Gas will not accept GPS coordinates that do not meet the following requirements:

1. Datum: NAD 1983, Zone: 17 North, Coordinate Units: meters, Altitude: height above mean sea level (MSL) – meters.
2. Accuracy to Datum – 3.05 meters
3. Data Collection Method:

Survey grade GPS ____: Post Processed Differential ____

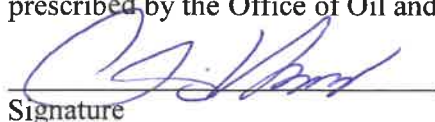
Real-Time Differential ____

Mapping Grade GPS X: Post Processed Differential X

Real-Time Differential ____

4. Letter size copy of the topography map showing the well location.

I the undersigned, hereby certify this data is correct to the best of my knowledge and belief and shows all the information required by law and the regulations issued and prescribed by the Office of Oil and Gas.


Signature

Chris Veazey - Director of Administration
Title

05/07/2015
Date

RECEIVED
Office of Oil and Gas

MAY 30 2015

WV Department of
Environmental Protection

06/13/2025