



Diversified Gas & Oil  
Corporation  
100 Diversified Way  
Pikeville KY, 41051

47-049-00712

Plugging Map

### Legend

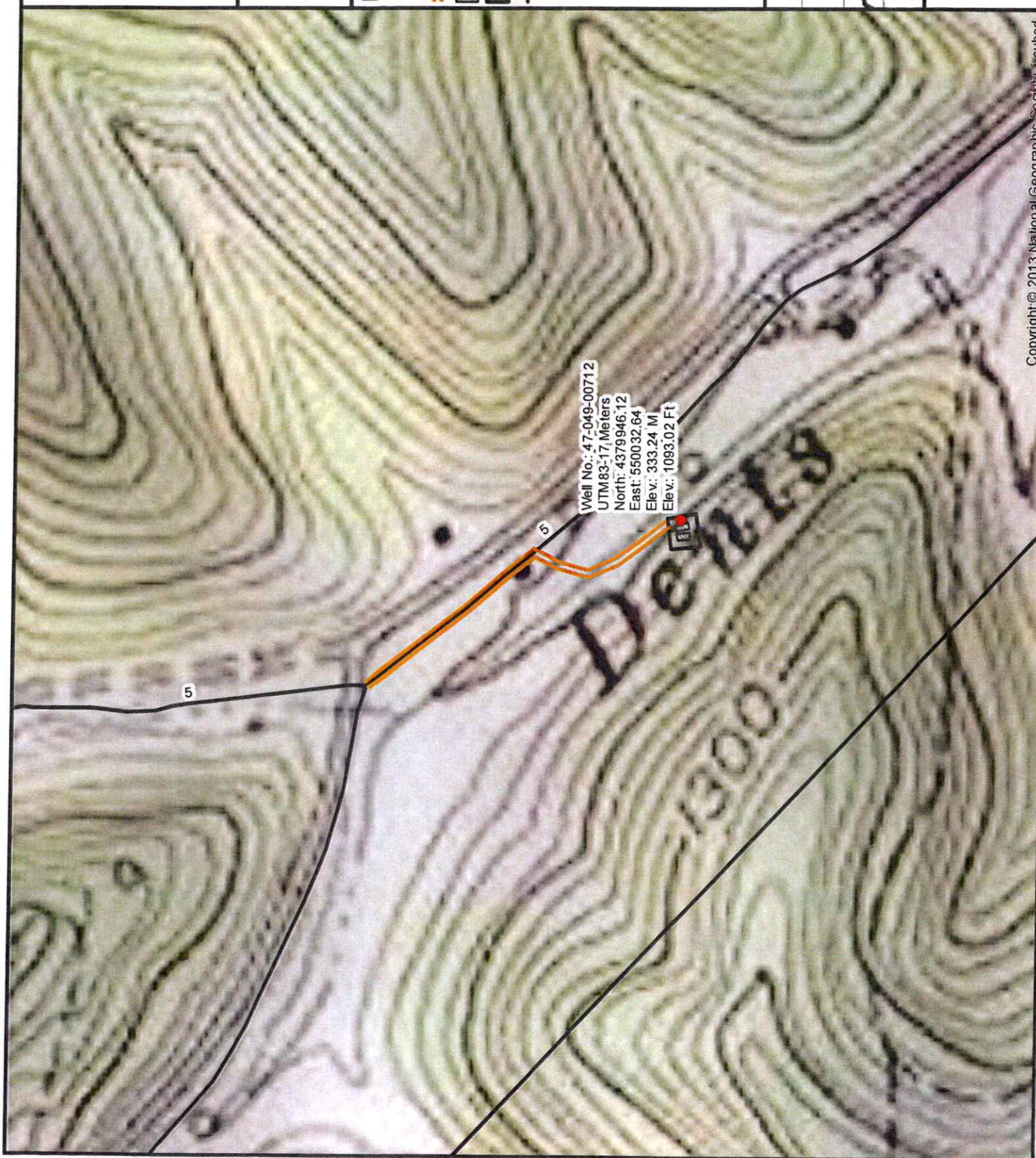
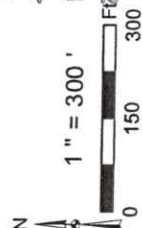
- Well
- Access Road
- Pits
- Pad
- Public Roads

RECEIVED  
Office of Oil and Gas

MAY 30 2025

WV Department of  
Environmental Protection

4704900712



Well No.: 47-049-00712  
UTM83-17 Meters  
North: 4379946.12  
East: 550032.64  
Elev: 333.24 M  
Elev: 1093.02 Ft

Copyright © 2013 National Geographic Society, Inc.

07/18/2025





Diversified Gas & Oil  
Corporation  
100 Diversified Way  
Pikeville KY, 41051

47-049-00712

Plugging Map

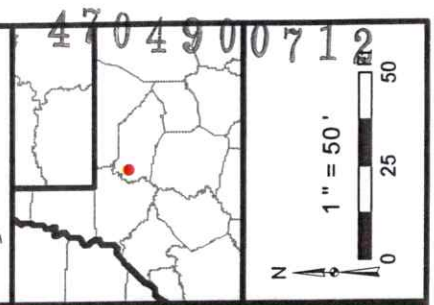
### Legend

- Well
- Access Road
- Pits
- Pad
- Public Roads

RECEIVED  
Office of Oil and Gas

MAY 30 2025

WV Department of  
Environmental Protection



5

Well No.: 47-049-00712  
UTM 83: 17, Meters  
North: 4379946.12  
East: 550032.64  
Elev.: 333.24 M  
Elev.: 1093.02 Ft

Secondary  
Pit

Primary Pit

Source: Esri, Maxar, Earthstar Geographics, and the GIS User Community

07/18/2025





West Virginia Department of Environmental Protection  
Office of Oil and Gas  
**WELL LOCATION FORM: GPS**

API: 4704900712 WELL NO.: Batson Z E & A 7  
FARM NAME: Batson, ZE & AM  
RESPONSIBLE PARTY NAME: Diversified Production, LLC  
COUNTY: Marion DISTRICT: Mannington  
QUADRANGLE: Mannington 7.5'  
SURFACE OWNER: Dennis G. Hayes & Louise M. Hayes  
ROYALTY OWNER: Hays Heirs, et al  
UTM GPS NORTHING: 4379946.12  
UTM GPS EASTING: 550032.64 GPS ELEVATION: 1093.02'

The Responsible Party named above has chosen to submit GPS coordinates in lieu of preparing a new well location plat for a plugging permit or assigned API number on the above well. The Office of Oil and Gas will not accept GPS coordinates that do not meet the following requirements:

1. Datum: NAD 1983, Zone: 17 North, Coordinate Units: meters, Altitude: height above mean sea level (MSL) – meters.
2. Accuracy to Datum – 3.05 meters
3. Data Collection Method:

Survey grade GPS \_\_\_\_: Post Processed Differential \_\_\_\_

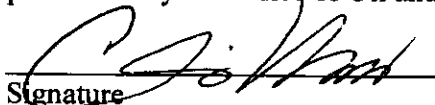
Real-Time Differential \_\_\_\_

Mapping Grade GPS X: Post Processed Differential X

Real-Time Differential \_\_\_\_

4. Letter size copy of the topography map showing the well location.

I the undersigned, hereby certify this data is correct to the best of my knowledge and belief and shows all the information required by law and the regulations issued and prescribed by the Office of Oil and Gas.

  
Signature

Chris Veazey - Director of Administration  
Title

4/24/2025  
Date

RECEIVED  
Office of Oil and Gas  
MAY 30 2025  
WV Department of  
Environmental Protection

07/18/2025