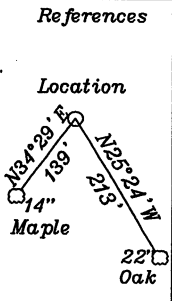


LATITUDE 39°30'00"N

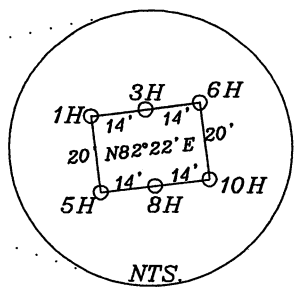


Notes: Ties to wells and corners are based on State Plane Grid North-WV North Zone NAD 27.

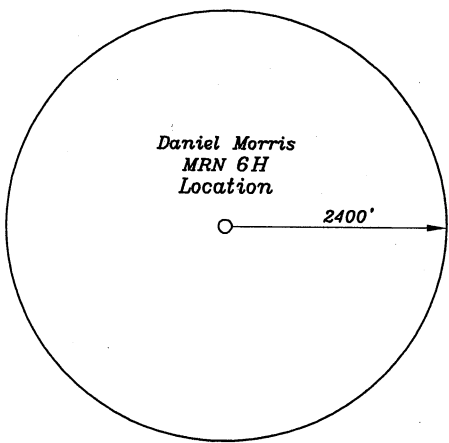
- L1- S47°36'W 1030'
- L2- S33°33'E 500'
- L3- S74°55'W 946'
- L4- N54°34'E 399'

- C1- Hall 0.63 ac. TM. 30-20
- D1- Stewart 0.757 ac. TM. 29-1.2
- E1- Harr 144.74 ac. TM 29-1
- F1- Higgins 12.355 ac. TM 29-19.2
- G1- Rush 10.336 ac. TM 29-19.3
- H1- Bunner 2 ac. TM 29-2

Top Hole NAD 27-39.475302 N, 80.010638 W UTM NAD 83-14337242.8 N, 1919657.9 E State Plane NAD 27-355634.7 N. 1855854.2 E
TPI NAD 27-39.473383 N, 80.013318 W UTM NAD 83-14336536 N, 1918909 E State Plane NAD 27-354940 N. 1855094 E
KOP NAD 27-39.474523 N, 80.014305 W UTM NAD 83-14336948 N, 1918626 E State Plane NAD 27-355357 N. 1854817 E
Bottom Hole NAD 27-39.459706 N, 80.001472 W UTM NAD 83-14331593 N, 1922307 E State Plane NAD 27-349940 N. 1858410 E



NORTH



- A- Liddell 61.75 ac. TM.31-23
- B- Morris 27.058 ac. TM.31-15
- C- Cottrell 2.933 ac. TM.31-15.4
- D- Cottrell 2.933 ac. TM.31-15.3
- E- Layman 2.933 ac. TM.31-15.2
- F- Carpenter 2.933 ac. TM.31-15.1
- G- Morris 8.945 ac. TM.31-3.1
- H- Ferrell 5 ac. TM.31-3.2
- I- Ferrell 22.055 ac. TM.31-3
- J- Heiskell 52 ac. TM.31-24
- K- Bunner 41.63 ac.
- L- Stewart 204.2274 ac. TM.31-2
- M- Kline 1.6 ac. TM. 31-2.4
- N- Stewart 1.5 ac. TM. 31-2.3
- O- Carpenter 0.66 ac. TM. 31-2.5
- P- Honacker 7.67 ac. TM 30-2.1
- Q- Bunner 35.29 ac. TM 30-18
- R- Bunner 3.54 ac. TM 30-18.4
- S- Bunner 1.42 ac. TM 30-18.3
- T- Bunner 1.75 ac. TM 30-18.1
- U- Travis 30 ac. TM 30-17
- V- Bunner 6.25 ac. TM 30-18.2
- W- Merrifield 15.71 ac. TM 30-1.1
- X- Priest 12.355 ac. TM 29-19
- Y- Rush 12.355 ac. TM 29-19.1
- Z- Stewart 2.08 ac. TM 30-19 & 21
- A1- Bunner 1.5 ac. TM. 31-2.2
- B1- Trustees of Nebo Church 1.37 ac. TM.31-1 & 1.1

Bottom Hole 14,623'

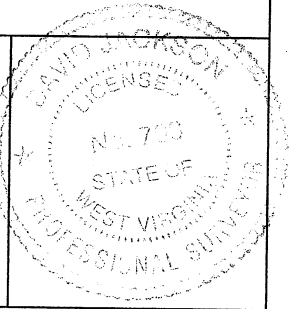
LONGITUDE 80°00'00" W

Top Hole 8,978'

(+) DENOTES LOCATION OF WELL ON UNITED STATES TOPOGRAPHIC MAPS

FILE NO. _____
DRAWING NO. 1
SCALE 1" = 2000'
MINIMUM DEGREE OF ACCURACY 1 in 200
PROVEN SOURCE OF ELEVATION GPS
submeter unit

I THE UNDERSIGNED, HEREBY CERTIFY THAT THIS PLAT IS CORRECT TO THE BEST OF MY KNOWLEDGE AND BELIEF AND SHOWS ALL THE INFORMATION REQUIRED BY LAW AND THE REGULATIONS ISSUED AND PRESCRIBED BY THE DEPARTMENT OF ENERGY.
(SIGNED) David L. Jackson
R.P.E. _____ L.L.S. 708



STATE OF WEST VIRGINIA
Division of Environmental Protection
OFFICE OF OIL AND GAS

DATE August 18, 2011
OPERATOR'S WELL NO. Daniel Morris MRN 6H
API WELL NO. _____

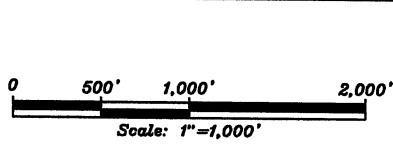
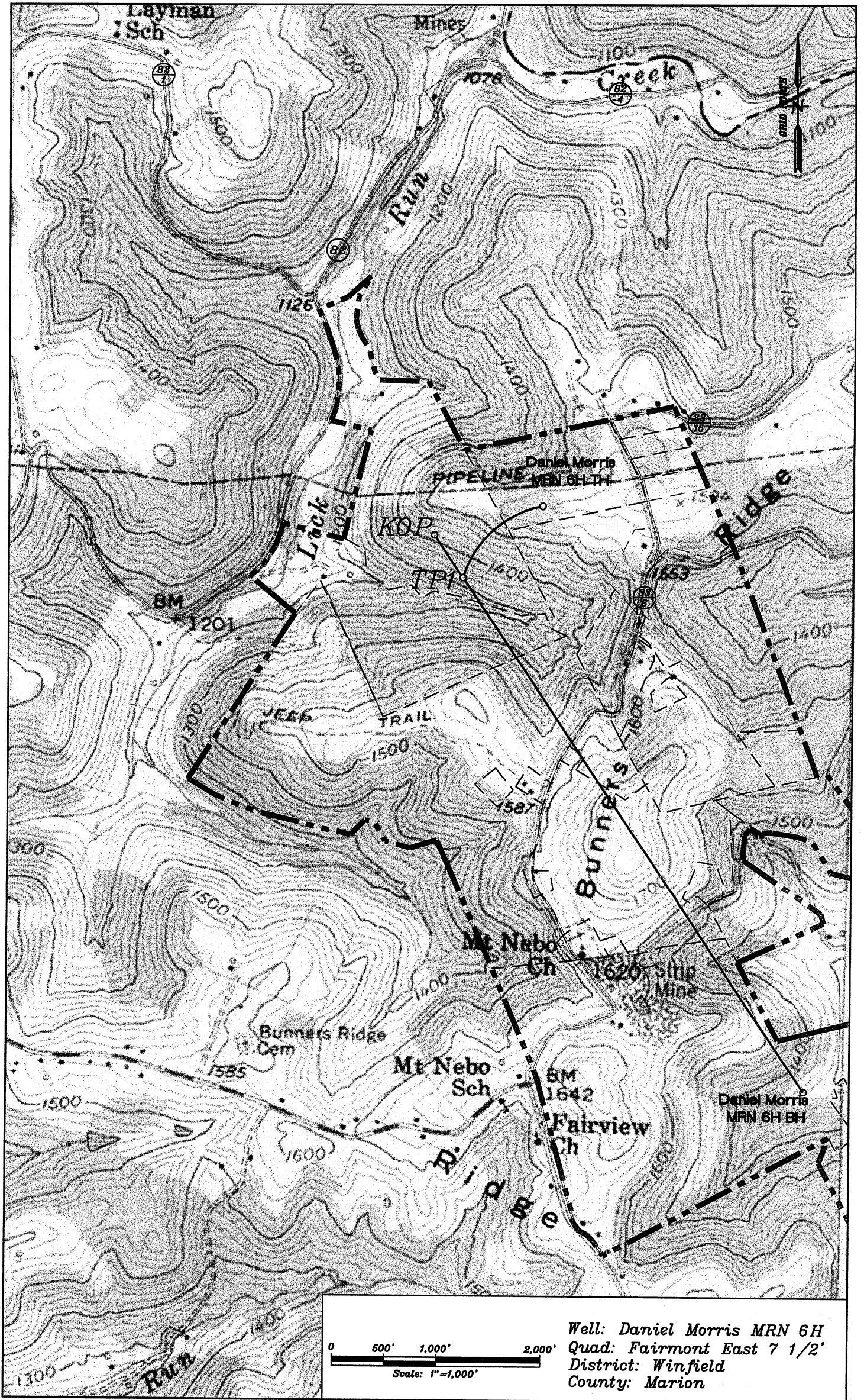
WELL TYPE: OIL ___ GAS X LIQUID INJECTION ___ WASTE DISPOSAL ___
(IF "GAS") PRODUCTION X STORAGE ___ DEEP ___ SHALLOW X
STATE 47 COUNTY 049 PERMIT 02190 H

LOCATION: ELEVATION 1567' WATER SHED Lick Run
DISTRICT Winfield COUNTY Marion
QUADRANGLE Fairmont East 7-1/2'

SURFACE OWNER Daniel Morris ACREAGE 27.058 Ac.
OIL & GAS ROYALTY OWNER Daniel Morris LEASE ACREAGE 512.5404 Ac.
LEASE NO. 1-250345-00 (TM 31/15), 1-237265-001 (TM 31/24), 1-302290-001 & 002 (TM 29/19.2)
1-237226-000 (TM 31/23), 1-236592-001 & 002 (TM 31/2, 2.1, 2.5 & TM 30/19, 21),
1-237223-000 (TM 29/1)

PROPOSED WORK: DRILL X CONVERT ___ DRILL DEEPER ___ REDRILL ___ FRACTURE OR STIMULATE ___ PLUG OFF OLD FORMATION ___ PERFORATE NEW FORMATION X OTHER PHYSICAL CHANGE IN WELL (SPECIFY) _____

PLUG AND ABANDON ___ CLEAN OUT AND REPLUG ___
TARGET FORMATION Marcellus ESTIMATED DEPTH 7460'+ Horizontal Leg
WELL OPERATOR Chesapeake Appalachia, L.L.C. DESIGNATED AGENT Eric B. Gillespie
ADDRESS P.O. Box 18496 Oklahoma City, OK 73154-0496 ADDRESS P.O. Box 6070 Charleston, WV 25362



Well: Daniel Morris MRN 6H
 Quad: Fairmont East 7 1/2'
 District: Winfield
 County: Marion