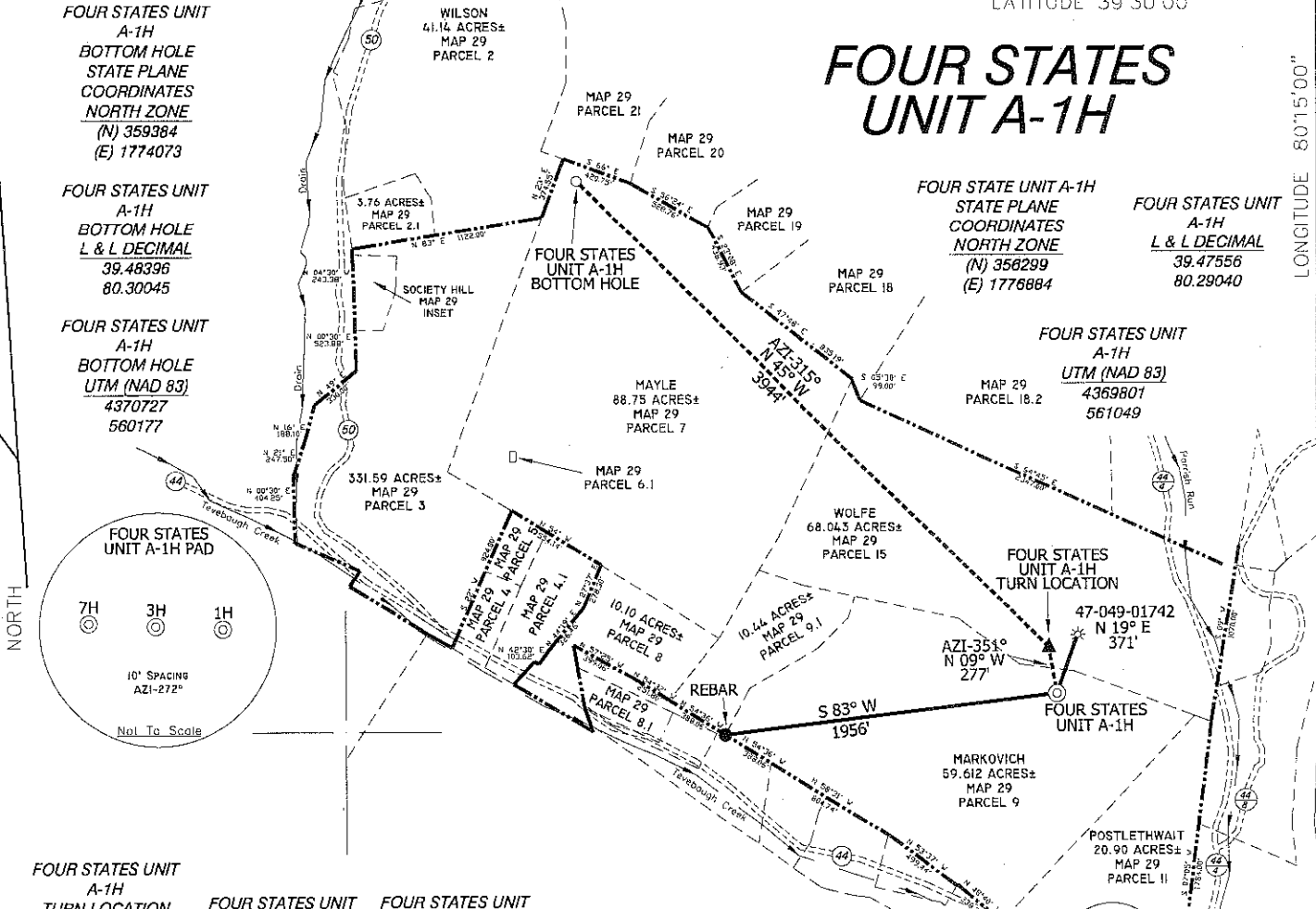


# FOUR STATES UNIT A-1H



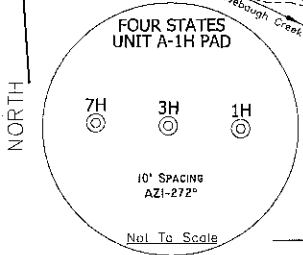
FOUR STATES UNIT A-1H  
BOTTOM HOLE  
STATE PLANE  
COORDINATES  
NORTH ZONE  
(N) 359364  
(E) 1774073

FOUR STATES UNIT A-1H  
BOTTOM HOLE  
L & L DECIMAL  
39.48396  
80.30045

FOUR STATES UNIT A-1H  
BOTTOM HOLE  
UTM (NAD 83)  
4370727  
560177

FOUR STATES UNIT A-1H  
STATE PLANE  
COORDINATES  
NORTH ZONE  
(N) 356299  
(E) 1776884

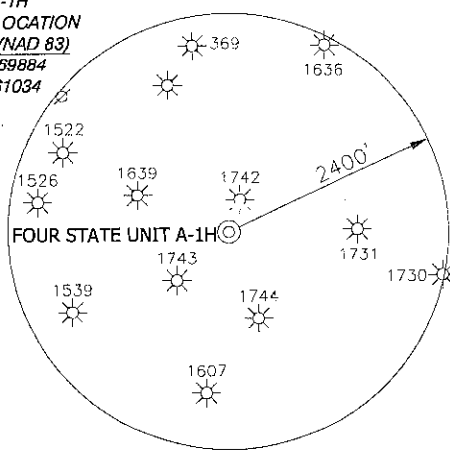
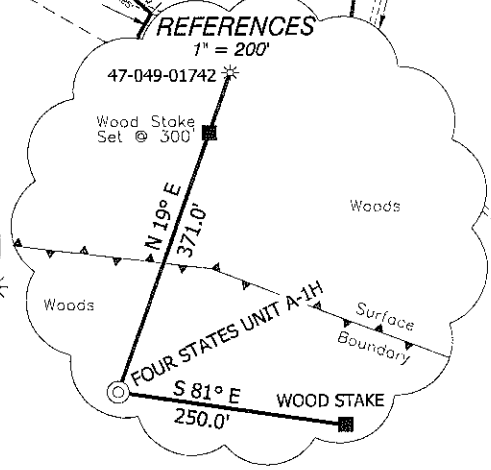
FOUR STATES UNIT A-1H  
UTM (NAD 83)  
4369801  
561049



FOUR STATES UNIT A-1H  
TURN LOCATION  
STATE PLANE  
COORDINATES  
NORTH ZONE  
(N) 356572  
(E) 1776839

FOUR STATES UNIT A-1H  
TURN LOCATION  
L & L DECIMAL  
39.47630  
80.29057

FOUR STATES UNIT A-1H  
TURN LOCATION  
UTM (NAD 83)  
4369884  
561034

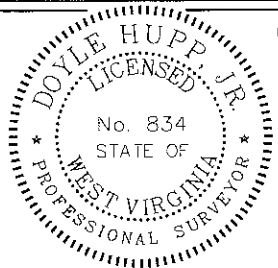


### NOTES ON SURVEY

TIES TO WELLS AND CORNERS ARE BASED ON STATE PLANE GRID NORTH WY NORTH ZONE NAD '27.  
LEASE BOUNDARY SHOWN HEREON TAKEN FROM DEED BOOK 995 AT PAGE 534 AND INFORMATION PROVIDED BY XTO ENERGY INC. SURFACE OWNER AND ADJOINER INFORMATION TAKEN FROM THE ASSESSOR AND COUNTY CLERK RECORDS OF MARION COUNTY IN AUGUST, 2011 AND INFORMATION PROVIDED BY XTO ENERGY INC.  
WELL LAT./LONG. ESTABLISHED BY SG-GPS. ORIGINAL PLAT DATE OF MARCH 1, 2012.

I, THE UNDERSIGNED, HEREBY CERTIFY THAT THIS PLAT IS CORRECT TO THE BEST OF MY KNOWLEDGE AND BELIEF AND SHOWS ALL THE INFORMATION REQUIRED BY LAW AND THE REGULATIONS ISSUED AND PRESCRIBED BY THE DIVISION OF ENVIRONMENTAL PROTECTION.

P.S. 834  
*Doyle Hupp Jr.*  
HUPP Surveying & Mapping  
P.O. Box 647 Grantsville, WV 26147  
(304) 354-7035 EMAIL: hupp@frontiernet.net



(+) DENOTES LOCATION OF WELL ON UNITED STATES TOPOGRAPHIC MAPS.  
DATE MARCH 8, 20 12  
OPERATORS WELL NO. FOUR STATES UNIT A-1H  
API WELL NO. 47-049-2221 H6A  
STATE COUNTY PERMIT

MINIMUM DEGREE OF ACCURACY 1/2500 FILE NO. W2076 (BK55-26)  
PROVEN SOURCE OF ELEVATION SG-GPS (OPUS) SCALE 1" = 1000'

STATE OF WEST VIRGINIA  
DIVISION OF ENVIRONMENTAL PROTECTION  
OFFICE OF OIL AND GAS

WELL TYPE : OIL  GAS  LIQUID INJECTION  WASTE DISPOSAL  IF "GAS" PRODUCTION  STORAGE  DEEP  SHALLOW

LOCATION :  
ELEVATION 1,249' WATERSHED TEVEBAUGH CREEK  
DISTRICT LINCOLN COUNTY MARION QUADRANGLE SHINNSTON 7.5'

SURFACE OWNER JOHN MARKOVICH ACREAGE 59.612±  
ROYALTY OWNER DOUGLAS WOLFE, et al LEASE ACREAGE 216.41±  
PROPOSED WORK : LEASE NO. \_\_\_\_\_

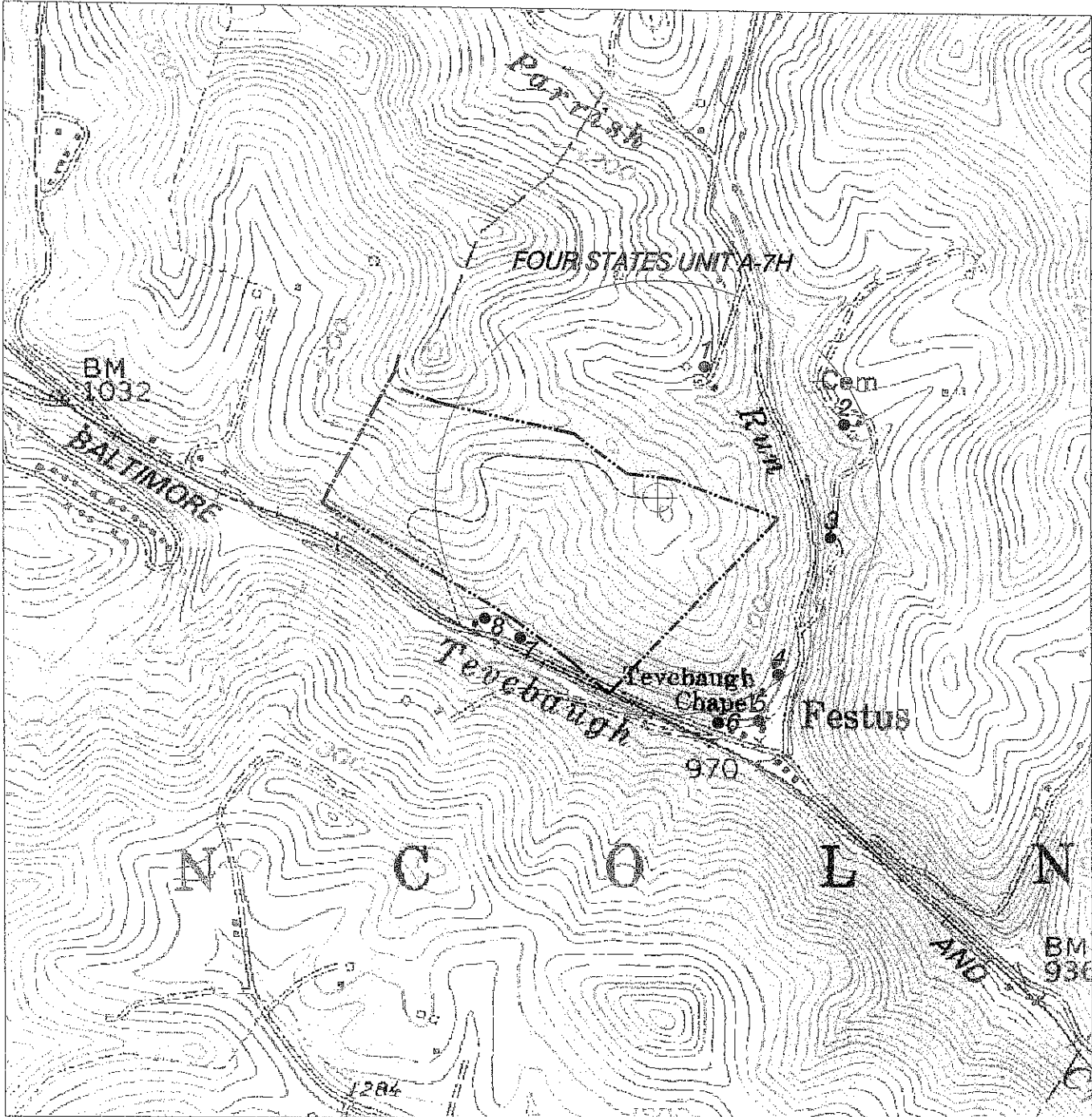
DRILL  CONVERT  DRILL DEEPER  REDRILL  FRACTURE OR STIMULATE  PLUG OFF OLD FORMATION  PERFORATE NEW FORMATION  PLUG AND ABANDON  CLEAN OUT AND REPLUG  OTHER

PHYSICAL CHANGE IN WELL (SPECIFY) \_\_\_\_\_ TARGET FORMATION MARCELLUS  
ESTIMATED DEPTH TVD- 7,750' MD- 14,000'

WELL OPERATOR XTO ENERGY INC. DESIGNATED AGENT GARY BEALL  
ADDRESS 810 HOUSTON STREET FORT WORTH, TX 76102 ADDRESS P.O. BOX 1008 JANE LEW, WV 26378

# XTO ENERGY INC. FOUR STATES UNIT A-7H Water

49-2221



### HUPP Surveying & Mapping

P.O. BOX 647 GRANTSVILLE, WV 26147  
PH: (304) 354-7035 E-MAIL: hupp@frontiernet.net

1" = 1000'  
Shinnston Quad

XTO Energy Inc.  
810 Houston Street  
Fort Worth, TX 76102