



Company: Trans Energy Inc.  
 Site: Beaty  
 Well: 1H  
 Project: Marion County, West Virginia (NAD 83)  
 Rig Name: H&P 285



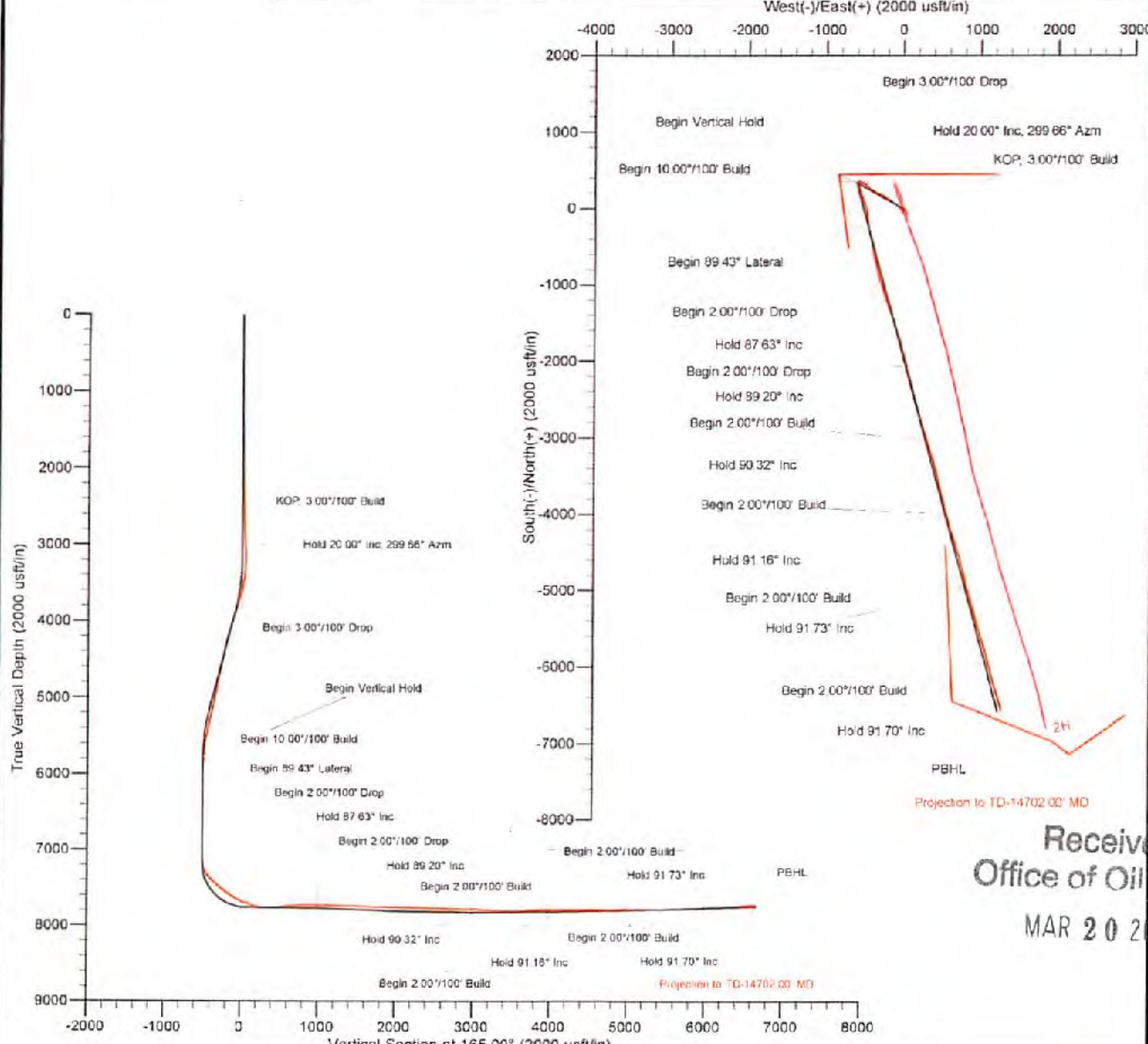
**Annotations**

Azimuths to Grid North  
 True North: 0.55°  
 Magnetic North: -8.24°  
 Magnetic Field  
 Strength: 52465.5 nT  
 Dip Angle: 67.03°  
 Date: 08/20/2013  
 Model: WMM\_2010

US State Plane 1983  
 West Virginia Northern Zone

Created By: HLH  
 Date: 15:42, September 16 2013  
 Plan: Design #1

MD	Inc	Azi	TVD	+NI-S	+E-W	VSect	Departure	Annotation
3200.00	0.00	0.00	3200.00	0.00	0.00	0.00	0.00	KOP, 3.00°/100' Build
3866.67	20.00	299.66	3653.21	56.99	-100.09	-80.95	115.18	Hold 20.00° Inc, 299.66° Azm
5257.11	20.00	299.66	5159.80	292.29	-513.36	-415.20	590.74	Begin 3.00°/100' Drop
5923.77	0.00	0.00	5813.01	349.28	-613.45	-496.15	705.92	Begin Vertical Hold
7298.60	0.00	0.00	7167.83	349.28	-613.45	-496.15	705.92	Begin 10.00°/100' Build
8192.90	89.43	165.00	7750.76	-198.85	-466.63	71.10	1273.17	Begin 89.43° Lateral
9121.84	89.43	165.00	7770.00	-1035.99	-229.22	1000.00	2292.07	Begin 2.00°/100' Drop
9211.91	87.63	165.00	7772.31	-1182.86	-202.91	1090.04	2292.11	Hold 87.63° Inc
10122.65	87.63	165.00	7810.00	-2061.82	32.60	2000.00	3202.07	Begin 2.00°/100' Drop
10201.35	89.20	165.00	7812.17	-2137.80	52.96	2076.67	3280.74	Hold 89.20° Inc
11122.77	89.20	165.00	7825.00	-3027.74	291.42	3000.00	4202.07	Begin 2.00°/100' Build
11178.52	90.32	165.00	7825.23	-3081.58	305.85	3055.74	4257.81	Hold 90.32° Inc
12122.79	90.32	165.00	7820.00	-3993.67	550.24	4000.00	5202.07	Begin 2.00°/100' Build
12165.12	91.16	165.00	7819.48	-4034.55	561.19	4042.33	5244.40	Hold 91.16° Inc
13122.99	91.16	165.00	7800.00	-4969.59	809.06	5000.00	6202.07	Begin 2.00°/100' Build
13151.09	91.73	165.00	7799.29	-4988.73	815.33	5028.09	6230.16	Hold 91.73° Inc
14123.44	91.73	165.00	7770.00	-5925.52	1067.87	6000.00	7202.07	Begin 2.00°/100' Build
14124.76	91.70	165.00	7769.96	-5926.80	1068.22	6001.32	7203.39	Hold 91.70° Inc
14797.83	91.70	165.00	7750.00	-6576.64	1242.34	6674.09	7876.16	PEHL



Received  
 Office of Oil & Gas  
 MAR 20 2015

The customer should only rely on this document after independently verifying all paths, targets, coordinates, lease and hard lines represented. Any decisions made or wells drilled utilizing this or any other information supplied by MS Energy are at the sole risk and responsibility of the customer. MS Energy is not responsible for the accuracy of this schematic or the information contained herein.

<b>Company:</b> Trans Energy Inc.	<b>Local Co-ordinate Reference:</b> Well 1H
<b>Project:</b> Marion County, West Virginia (NAD 83)	<b>TVD Reference:</b> WELL @ 1327.03usft (H&P 285)
<b>Site:</b> Beaty	<b>MD Reference:</b> WELL @ 1327.03usft (H&P 285)
<b>Well:</b> 1H	<b>North Reference:</b> Grid
<b>Wellbore:</b> Wellbore #1	<b>Survey Calculation Method:</b> Minimum Curvature
<b>Design:</b> Surveys	<b>Database:</b> Well Planning Conroe

<b>Project</b>	Marion County, West Virginia (NAD 83)		
<b>Map System:</b>	US State Plane 1983	<b>System Datum:</b>	Mean Sea Level
<b>Geo Datum:</b>	North American Datum 1983		
<b>Map Zone:</b>	West Virginia Northern Zone		

<b>Well</b>	1H				
<b>Well Position</b>	<b>+N/-S</b>	0.00 usft	<b>Northing:</b>	376,233.29 usft	<b>Latitude:</b> 39.5352333
	<b>+E/-W</b>	0.00 usft	<b>Easting:</b>	1,724,776.17 usft	<b>Longitude:</b> -80.3841694
<b>Position Uncertainty</b>		0.00 usft	<b>Wellhead Elevation:</b>	usft	<b>Ground Level:</b> 1,307.03 usft

**Wellbore** Wellbore #1

<b>Magnetics</b>	<b>Model Name</b>	<b>Sample Date</b>	<b>Declination (°)</b>	<b>Dip Angle (°)</b>	<b>Field Strength (nT)</b>
	WMM_2010	08/20/13	-8.79	67.03	52,466

**Design** Surveys

**Audit Notes:**

**Version:** 1.0 **Phase:** ACTUAL **Tie On Depth:** 0.00

<b>Vertical Section:</b>	<b>Depth From (TVD) (usft)</b>	<b>+N/-S (usft)</b>	<b>+E/-W (usft)</b>	<b>Direction (°)</b>
	0.00	0.00	0.00	165.00

**Survey Program** Date 09/16/13

<b>From (usft)</b>	<b>To (usft)</b>	<b>Survey (Wellbore)</b>	<b>Tool Name</b>	<b>Description</b>
145.00	14,702.00	MS MWD (Wellbore #1)	MWD	MWD - Standard

**Survey**

Measured Depth (usft)	Inclination (°)	Azimuth (°)	Vertical Depth (usft)	+N/-S (usft)	+E/-W (usft)	Vertical Section (usft)	Dogleg Rate (°/100usft)	Build Rate (°/100usft)	Turn Rate (°/100usft)
0.00	0.00	0.00	0.00	0.00	0.00	0.00	0.00	0.00	0.00
145.00	0.60	270.30	145.00	0.00	-0.76	-0.20	0.41	0.41	0.00
234.00	0.80	291.40	233.99	0.23	-1.80	-0.69	0.36	0.22	23.71
325.00	0.30	280.40	324.99	0.51	-2.63	-1.17	0.58	-0.55	-12.09
417.00	0.50	322.40	416.98	0.87	-3.11	-1.65	0.37	0.22	45.65
509.00	0.40	336.60	508.99	1.46	-3.48	-2.33	0.16	-0.11	15.43
599.00	0.60	264.00	598.98	1.72	-4.08	-2.72	0.68	0.22	-80.67
690.00	0.50	203.20	689.99	1.31	-4.71	-2.48	0.62	-0.11	-68.81
780.00	0.80	247.30	779.97	0.70	-5.44	-2.09	0.62	0.33	49.00
873.00	0.30	196.00	872.97	0.22	-6.11	-1.79	0.71	-0.54	-55.16
964.00	0.50	197.10	963.96	-0.39	-6.29	-1.25	0.22	0.22	1.21
1,023.00	1.10	236.10	1,022.96	-0.95	-6.84	-0.65	1.32	1.02	66.10
1,118.00	1.30	215.90	1,117.94	-2.33	-8.22	0.13	0.49	0.21	-21.26
1,212.00	1.30	222.10	1,211.91	-3.99	-9.56	1.38	0.15	0.00	6.60
1,305.00	1.50	211.90	1,305.89	-5.82	-10.93	2.80	0.34	0.21	-10.85

Received  
 Office of Oil & Gas

COMPASS 5000 1 Build 65

MAR 20 2015





**MS Energy Services**

Survey Report



**Company:** Trans Energy Inc.  
**Project:** Marion County, West Virginia (NAD 83)  
**Site:** Beaty  
**Well:** 1H  
**Wellbore:** Wellbore #1  
**Design:** Surveys

**Local Co-ordinate Reference:** Well 1H  
**TVD Reference:** WELL @ 1327.03usft (H&P 285)  
**MD Reference:** WELL @ 1327.03usft (H&P 285)  
**North Reference:** Grid  
**Survey Calculation Method:** Minimum Curvature  
**Database:** Well Planning Conroe

**Survey**

Measured Depth (usft)	Inclination (°)	Azimuth (°)	Vertical Depth (usft)	+N/-S (usft)	+E/-W (usft)	Vertical Section (usft)	Dogleg Rate (°/100usft)	Build Rate (°/100usft)	Turn Rate (°/100usft)
1,401.00	1.40	207.70	1,400.85	-7.91	-12.13	4.50	0.15	-0.11	-4.42
1,495.00	1.70	206.90	1,494.82	-10.17	-13.29	6.38	0.32	0.32	-0.85
1,599.00	0.50	84.10	1,588.81	-11.37	-13.51	7.48	2.14	-1.28	-130.64
1,684.00	1.50	79.30	1,683.79	-11.10	-11.88	7.64	1.05	1.05	-5.05
1,778.00	1.50	77.50	1,777.76	-10.60	-9.47	7.79	0.05	0.00	-1.91
1,872.00	1.60	89.00	1,871.73	-10.31	-6.96	8.16	0.35	0.11	12.23
1,967.00	2.30	96.80	1,966.67	-10.51	-3.74	9.18	0.78	0.74	8.00
2,061.00	1.30	152.20	2,060.63	-11.67	-1.37	10.92	2.02	-1.06	59.15
2,156.00	1.40	183.00	2,155.60	-13.78	-0.92	13.07	0.76	0.11	32.42
2,250.00	2.00	198.00	2,249.56	-16.49	-1.49	15.54	0.79	0.64	15.96
2,344.00	2.60	198.70	2,343.49	-20.07	-2.68	18.69	0.84	0.64	0.74
2,438.00	1.70	191.40	2,437.42	-23.45	-3.64	21.71	1.00	-0.96	-7.77
2,534.00	1.80	175.30	2,533.37	-26.35	-3.80	24.47	0.52	0.10	-16.77
2,628.00	2.10	181.80	2,627.32	-29.54	-3.73	27.57	0.40	0.32	6.91
2,722.00	2.20	176.30	2,721.25	-33.07	-3.67	30.99	0.24	0.11	-5.85
2,816.00	2.80	176.20	2,815.16	-37.16	-3.40	35.01	0.64	0.64	-0.11
2,911.00	2.40	187.50	2,910.07	-41.41	-2.82	39.27	0.59	-0.42	-9.16
2,997.00	2.70	165.80	2,985.99	-44.70	-2.03	42.65	0.41	0.39	-2.24
3,051.00	2.50	154.40	3,049.93	-47.42	-1.06	45.53	0.86	-0.31	-17.81
3,146.00	1.90	211.00	3,144.87	-50.84	-0.98	48.68	2.26	-0.63	59.58
3,240.00	1.90	325.60	3,238.84	-50.69	-2.66	48.28	3.40	0.00	121.91
3,334.00	5.10	316.80	3,332.65	-46.36	-6.40	43.12	3.44	3.40	-9.36
3,429.00	7.60	323.40	3,427.06	-38.24	-13.04	33.56	2.74	2.63	6.95
3,523.00	11.40	323.00	3,519.78	-25.82	-22.34	19.16	4.04	4.04	-0.43
3,617.00	14.60	323.50	3,611.34	-8.88	-34.98	-0.48	3.41	3.40	0.53
3,712.00	17.90	312.80	3,702.55	10.68	-52.82	-23.99	4.68	3.47	-11.26
3,806.00	21.50	313.70	3,791.03	32.40	-75.88	-50.94	3.64	3.83	0.96
3,900.00	22.30	308.50	3,878.28	55.41	-102.30	-80.00	2.23	0.85	-5.53
3,995.00	20.90	308.30	3,966.61	77.08	-129.64	-108.01	1.58	-1.58	-0.21
4,089.00	21.20	307.20	4,054.37	97.70	-156.28	-134.92	0.60	0.43	-1.17
4,183.00	22.30	307.70	4,141.88	118.89	-183.93	-162.44	1.19	1.17	0.53
4,277.00	19.90	304.30	4,229.37	138.81	-211.26	-188.76	2.87	-2.55	-3.62
4,372.00	19.40	299.90	4,318.84	155.79	-238.29	-212.16	1.64	-0.53	-4.63
4,466.00	16.60	295.20	4,408.24	169.29	-263.98	-231.85	3.35	-2.98	-5.00
4,560.00	14.20	294.50	4,498.86	179.79	-286.63	-247.85	2.58	-2.55	-0.74
4,655.00	12.70	296.10	4,591.25	189.22	-306.61	-262.13	1.63	-1.58	1.68
4,749.00	14.50	297.10	4,682.61	199.13	-326.37	-276.81	1.93	1.91	1.06
4,844.00	17.50	301.90	4,773.92	212.09	-349.09	-295.22	3.45	3.16	5.05
4,938.00	16.90	300.30	4,863.72	226.46	-372.88	-315.25	0.81	-0.64	-1.70
5,032.00	16.70	297.80	4,953.71	239.65	-396.63	-334.14	0.80	-0.21	-2.66
5,126.00	16.20	305.40	5,043.87	253.55	-419.26	-353.42	2.35	-0.53	8.09
5,221.00	13.80	317.30	5,135.65	266.56	-437.76	-373.67	4.10	-2.53	12.53
5,315.00	16.10	314.90	5,226.46	287.00	-454.60	-394.88	2.53	2.45	-2.55
5,409.00	15.50	306.60	5,318.92	303.69	-473.91	-416.00	2.49	-0.64	-8.83

Received  
 Office of Oil & Gas

MAR 20 2015

09/15/2017

**Company:** Trans Energy Inc  
**Project:** Marion County, West Virginia (NAD 83)  
**Site:** Beaty  
**Well:** 1H  
**Wellbore:** Wellbore #1  
**Design:** Surveys

**Local Co-ordinate Reference:** Well 1H  
**TVD Reference:** WELL @ 1327.03usft (H&P 285)  
**MD Reference:** WELL @ 1327.03usft (H&P 285)  
**North Reference:** Grid  
**Survey Calculation Method:** Minimum Curvature  
**Database:** Well Planning Conroe

Survey

Measured Depth (usft)	Inclination (°)	Azimuth (°)	Vertical Depth (usft)	+N/-S (usft)	+E/-W (usft)	Vertical Section (usft)	Dogleg Rate (°/100usft)	Build Rate (°/100usft)	Turn Rate (°/100usft)
5,504.00	14.70	301.50	5,408.65	317.56	-494.38	-434.69	1.63	-0.84	-5.37
5,598.00	14.80	302.70	5,499.55	330.27	-514.66	-452.22	0.34	0.11	1.28
5,692.00	11.00	299.50	5,591.18	341.18	-532.57	-467.39	4.11	-4.04	-3.40
5,786.00	8.40	296.00	5,683.81	348.61	-546.55	-478.19	2.83	-2.77	-3.72
5,881.00	6.70	292.30	5,777.98	353.75	-557.92	-486.10	1.86	-1.79	-3.89
5,975.00	5.10	288.50	5,871.48	357.16	-566.95	-491.73	1.75	-1.70	-4.04
6,069.00	3.90	283.80	5,965.19	359.25	-574.02	-495.57	1.33	-1.28	-5.00
6,164.00	2.90	275.40	6,060.02	360.24	-579.55	-497.97	1.17	-1.05	-6.84
6,258.00	2.20	267.60	6,153.93	360.39	-583.72	-499.19	0.83	-0.74	-8.30
6,352.00	1.80	258.70	6,247.87	360.03	-586.97	-499.68	0.54	-0.43	-9.47
6,446.00	1.20	259.60	6,341.84	359.56	-589.38	-499.85	0.64	-0.64	0.96
6,541.00	1.00	242.90	6,436.82	359.00	-591.10	-499.78	0.40	-0.21	-17.58
6,635.00	0.70	227.80	6,530.81	358.24	-592.26	-499.32	0.40	-0.32	-16.06
6,730.00	0.70	215.80	6,625.80	357.38	-593.03	-498.69	0.15	0.00	-12.63
6,824.00	0.70	204.20	6,719.80	356.39	-593.60	-497.88	0.15	0.00	-12.34
6,918.00	0.70	11.80	6,813.80	356.43	-593.71	-497.95	1.48	0.00	178.30
7,013.00	0.50	198.60	6,908.79	356.61	-593.73	-498.12	1.26	-0.21	-182.32
7,107.00	0.80	180.30	7,002.79	355.73	-593.88	-497.31	0.21	0.11	-19.47
7,202.00	0.40	181.20	7,097.79	354.90	-593.87	-496.51	0.21	-0.21	0.95
7,284.00	3.30	177.40	7,159.75	352.90	-593.80	-494.56	4.68	4.68	-6.13
7,296.00	7.10	186.90	7,191.61	350.05	-593.30	-491.68	12.19	11.88	-32.81
7,327.00	12.70	182.20	7,222.14	344.94	-591.83	-486.36	18.24	18.08	-15.16
7,359.00	16.90	182.80	7,253.07	337.14	-589.38	-478.19	13.13	13.13	1.88
7,390.00	21.70	183.10	7,282.32	327.35	-586.38	-487.96	15.49	15.48	0.97
7,422.00	28.30	183.10	7,311.30	314.41	-582.45	-454.45	20.63	20.63	0.00
7,453.00	34.00	164.10	7,337.82	299.03	-577.93	-438.42	18.45	18.39	3.23
7,484.00	39.30	164.80	7,362.68	281.21	-572.98	-419.93	17.15	17.10	2.26
7,516.00	46.20	164.90	7,386.17	260.26	-567.31	-398.22	21.56	21.56	0.31
7,547.00	48.70	164.50	7,407.13	238.23	-561.28	-375.38	8.12	8.06	-1.29
7,579.00	49.20	164.30	7,426.15	214.99	-554.79	-351.25	1.63	1.56	-0.63
7,610.00	49.80	163.40	7,446.28	192.35	-548.23	-327.69	2.94	1.94	-2.90
7,642.00	50.10	163.30	7,466.87	168.88	-541.21	-303.20	0.97	0.94	-0.31
7,673.00	50.50	162.90	7,488.67	146.08	-534.28	-279.36	1.63	1.29	-1.29
7,705.00	50.60	162.40	7,506.96	122.44	-526.90	-254.64	1.53	0.94	-1.56
7,736.00	50.90	162.40	7,528.53	99.62	-519.63	-230.62	0.32	0.32	0.00
7,767.00	50.60	161.80	7,546.10	76.65	-512.24	-206.61	1.54	-0.32	-1.94
7,799.00	50.70	161.60	7,568.35	53.12	-504.46	-181.87	0.58	-0.31	-0.63
7,830.00	53.10	162.50	7,587.48	29.91	-496.95	-157.51	8.07	7.74	2.90
7,862.00	54.70	163.80	7,606.33	5.17	-489.48	-131.67	5.98	5.00	4.06
7,893.00	57.10	167.70	7,623.72	-19.71	-483.15	-106.02	12.98	7.74	12.58
7,925.00	59.50	170.40	7,640.53	-46.43	-477.99	-78.88	10.38	7.50	8.44
7,956.00	59.30	171.30	7,656.31	-72.77	-473.75	-52.32	2.58	-0.65	2.90
7,988.00	62.90	173.20	7,671.78	-100.53	-469.98	-24.54	12.39	1.25	5.94

Received  
Office of Oil & Gas

MAR 20 2015





MS Energy Services

Survey Report



Company: Trans Energy Inc  
 Project: Marion County, West Virginia (NAD 83)  
 Site: Beaty  
 Well: 1H  
 Wellbore: Wellbore #1  
 Design: Surveys

Local Co-ordinate Reference: Well 1H  
 TVD Reference: WELL @ 1327.03usft (H&P 285)  
 MD Reference: WELL @ 1327.03usft (H&P 285)  
 North Reference: Grid  
 Survey Calculation Method: Minimum Curvature  
 Database: Well Planning Conroe

Survey

Measured Depth (usft)	Inclination (°)	Azimuth (°)	Vertical Depth (usft)	+N/-S (usft)	+E/-W (usft)	Vertical Section (usft)	Dogleg Rate (°/100usft)	Build Rate (°/100usft)	Turn Rate (°/100usft)
8,019.00	87.00	174.30	7,684.90	-128.44	-466.93	3.21	13.81	13.23	3.55
8,051.00	69.40	173.50	7,696.78	-157.98	-463.77	32.56	7.85	7.50	-2.50
8,082.00	71.30	172.30	7,707.21	-186.95	-460.16	61.48	7.13	6.13	-3.87
8,114.00	71.90	170.30	7,717.31	-216.96	-455.56	91.68	6.22	1.88	-6.25
8,145.00	72.40	169.50	7,726.81	-246.01	-450.39	121.05	2.94	1.61	-2.58
8,176.00	73.00	168.60	7,736.03	-275.07	-444.77	150.58	3.38	1.94	-2.90
8,208.00	75.40	166.90	7,744.74	-305.15	-438.23	181.33	9.08	7.50	-5.31
8,239.00	75.80	167.40	7,752.45	-334.43	-431.55	211.34	2.03	1.29	1.61
8,271.00	79.50	166.60	7,759.30	-365.00	-425.06	242.55	12.13	11.56	3.75
8,302.00	83.30	169.40	7,763.93	-395.08	-419.21	273.12	12.52	12.26	2.58
8,334.00	87.30	169.30	7,766.55	-426.42	-413.32	304.91	12.50	12.50	-0.31
8,426.00	94.60	168.40	7,764.99	-518.57	-395.16	388.63	7.82	7.77	-0.98
8,522.00	94.50	168.30	7,757.54	-610.34	-376.23	492.17	0.15	-0.11	-0.11
8,616.00	94.90	166.80	7,749.83	-701.82	-356.04	585.76	1.65	0.43	-1.60
8,711.00	94.10	166.70	7,742.38	-794.01	-334.33	690.42	0.85	-0.84	-0.11
8,805.00	92.70	164.60	7,736.81	-884.91	-311.08	774.24	2.68	-1.49	-2.23
8,899.00	89.50	162.20	7,735.00	-974.95	-284.23	886.17	4.25	-3.40	-2.55
8,993.00	89.00	163.20	7,736.23	-1,064.69	-256.28	962.06	1.19	-0.53	1.06
9,083.00	88.10	162.40	7,738.64	-1,155.41	-228.20	1,056.98	1.27	-0.95	-0.84
9,182.00	88.00	162.10	7,741.83	-1,244.88	-199.56	1,150.82	0.34	-0.11	-0.32
9,277.00	88.50	162.00	7,744.74	-1,335.22	-170.29	1,245.85	0.54	0.53	-0.11
9,371.00	88.90	161.80	7,746.87	-1,424.54	-141.10	1,339.48	0.48	0.43	-0.21
9,465.00	88.80	161.50	7,748.75	-1,513.75	-111.51	1,433.30	0.34	-0.11	-0.32
9,559.00	88.70	161.30	7,750.80	-1,602.81	-81.53	1,527.10	0.24	-0.11	-0.21
9,654.00	87.80	163.20	7,753.71	-1,693.24	-52.59	1,621.94	2.21	-0.95	2.00
9,748.00	86.50	164.90	7,756.74	-1,783.57	-26.77	1,715.87	1.95	0.74	1.81
9,843.00	88.60	165.20	7,759.14	-1,875.33	-2.27	1,810.84	0.33	0.11	0.32
9,937.00	86.70	167.00	7,761.36	-1,966.55	20.30	1,904.79	1.92	0.11	1.91
10,031.00	88.70	165.30	7,763.49	-2,057.79	42.80	1,998.75	1.81	0.00	-1.81
10,125.00	88.30	164.90	7,765.95	-2,148.60	66.96	2,092.71	0.60	-0.43	-0.43
10,220.00	88.30	164.90	7,768.77	-2,240.28	91.70	2,187.67	0.00	0.00	0.00
10,314.00	88.70	165.50	7,771.23	-2,331.13	115.70	2,281.64	0.77	0.43	0.64
10,409.00	89.10	166.30	7,773.06	-2,423.25	136.84	2,376.61	0.94	0.42	0.84
10,503.00	89.40	166.50	7,774.29	-2,514.60	160.94	2,470.57	0.38	0.32	0.21
10,597.00	89.70	165.20	7,775.02	-2,605.74	183.92	2,564.56	1.42	0.32	0.11
10,691.00	87.90	163.50	7,776.98	-2,696.23	209.27	2,658.52	2.63	-1.11	0.11
10,786.00	88.20	163.60	7,780.23	-2,787.29	236.15	2,753.44	0.33	0.32	0.11
10,880.00	88.30	163.10	7,783.10	-2,877.31	263.08	2,847.36	0.54	0.11	0.11
10,974.00	88.00	163.60	7,786.13	-2,967.32	289.99	2,941.27	0.62	-0.32	0.53
11,069.00	88.00	162.50	7,789.45	-3,058.14	317.67	3,036.15	1.16	0.00	-1.16
11,163.00	86.20	162.40	7,794.20	-3,147.64	345.98	3,129.94	1.92	-1.81	-0.11
11,257.00	86.40	162.70	7,800.27	-3,237.13	374.11	3,223.85	0.38	0.21	0.32
11,352.00	86.50	163.40	7,806.15	-3,327.83	401.75	3,318.42	0.74	0.11	0.74

Received  
 Office of Oil & Gas  
 MAR 20 2015



**Company:** Trans Energy Inc  
**Project:** Marion County, West Virginia (NAD 83)  
**Site:** Beaty  
**Well:** 1H  
**Wellbore:** Wellbore #1  
**Design:** Surveys

**Local Co-ordinate Reference:** Well 1H  
**TVD Reference:** WELL @ 1327.03usft (H&P 285)  
**MD Reference:** WELL @ 1327.03usft (H&P 285)  
**North Reference:** Grid  
**Survey Calculation Method:** Minimum Curvature  
**Database:** Well Planning Conroe

**Survey**

Measured Depth (usft)	Inclination (°)	Azimuth (°)	Vertical Depth (usft)	+N/-S (usft)	+E/-W (usft)	Vertical Section (usft)	Dog/leg Rate (°/100usft)	Build Rate (°/100usft)	Turn Rate (°/100usft)
11,446.00	88.70	166.00	7,810.09	-3,416.40	426.53	3,412.32	3.62	2.34	2.77
11,540.00	91.90	166.80	7,809.80	-3,509.75	448.63	3,506.28	3.51	3.40	0.85
11,634.00	92.00	167.10	7,808.40	-3,601.27	469.84	3,600.17	0.34	0.11	0.32
11,729.00	92.00	166.70	7,803.06	-3,693.74	491.36	3,695.06	0.42	0.00	-0.42
11,823.00	92.40	166.70	7,799.47	-3,785.16	512.97	3,788.95	0.43	0.43	0.00
11,917.00	92.00	166.80	7,795.86	-3,876.59	534.50	3,892.83	0.44	-0.43	0.11
12,012.00	89.70	163.90	7,794.45	-3,968.47	558.52	3,977.80	3.90	-2.42	-3.05
12,106.00	90.20	164.30	7,794.54	-4,058.87	584.27	4,071.79	0.68	0.53	0.43
12,200.00	90.10	163.40	7,794.29	-4,149.16	610.42	4,165.77	0.96	-0.11	-0.96
12,295.00	90.10	163.20	7,794.12	-4,240.16	637.72	4,260.73	0.21	0.00	-0.21
12,389.00	89.90	163.80	7,794.12	-4,330.28	664.41	4,354.70	0.67	-0.21	0.64
12,484.00	90.80	162.80	7,793.54	-4,421.27	691.71	4,449.65	1.42	0.95	-1.05
12,578.00	90.40	163.00	7,792.56	-4,511.11	719.35	4,543.58	0.48	-0.43	0.21
12,672.00	88.80	164.50	7,793.22	-4,601.35	745.65	4,637.55	2.33	-1.70	1.60
12,766.00	89.50	164.80	7,794.61	-4,691.99	770.53	4,731.54	0.81	0.74	0.32
12,860.00	91.70	166.80	7,793.63	-4,783.10	793.59	4,825.51	3.16	2.34	2.13
12,955.00	92.40	167.90	7,790.23	-4,875.73	814.38	4,920.37	1.37	0.74	1.16
13,049.00	90.30	164.70	7,788.01	-4,967.01	836.63	5,014.30	4.07	-2.23	-3.40
13,143.00	90.60	164.70	7,787.27	-5,057.68	861.44	5,108.30	0.32	0.32	0.00
13,238.00	88.70	164.80	7,787.86	-5,149.29	886.58	5,203.29	2.00	-2.00	-0.11
13,332.00	88.70	164.80	7,789.99	-5,239.93	911.38	5,297.27	0.21	0.00	0.21
13,426.00	88.70	164.10	7,792.12	-5,330.47	936.57	5,391.24	0.74	0.00	-0.74
13,521.00	90.10	163.50	7,793.12	-5,421.69	963.07	5,486.21	1.60	1.47	-0.63
13,615.00	90.30	163.80	7,792.79	-5,511.88	989.54	5,580.18	0.38	0.21	0.32
13,709.00	90.10	163.70	7,792.46	-5,602.13	1,015.84	5,674.16	0.24	-0.21	-0.11
13,803.00	90.60	163.80	7,791.88	-5,692.37	1,042.14	5,768.13	0.54	0.53	0.11
13,898.00	93.10	164.60	7,789.82	-5,783.73	1,067.99	5,863.07	2.76	2.63	0.84
13,992.00	93.90	165.00	7,783.08	-5,874.27	1,092.59	5,956.89	0.95	0.85	0.43
14,086.00	93.90	164.90	7,776.69	-5,964.83	1,116.95	6,050.67	0.11	0.00	-0.11
14,180.00	93.50	164.30	7,770.62	-6,055.27	1,141.86	6,144.47	0.77	-0.43	-0.64
14,275.00	94.00	163.80	7,764.41	-6,146.41	1,167.90	6,239.26	0.74	0.53	-0.53
14,369.00	94.60	163.50	7,757.36	-6,236.36	1,194.29	6,332.97	0.71	0.64	-0.32
14,463.00	94.70	163.10	7,749.74	-6,326.10	1,221.21	6,426.61	0.44	0.11	-0.43
14,557.00	94.80	163.50	7,741.95	-6,415.82	1,248.13	6,520.25	0.44	0.11	0.43
14,652.00	94.90	163.40	7,733.92	-6,506.56	1,275.10	6,614.88	0.15	0.11	-0.11
14,702.00	94.90	163.40	7,729.65	-6,554.30	1,289.33	6,664.67	0.00	0.00	0.00

Projection to TD-14702.00' MD

Received  
Office of Oil & Gas

MAR 20 2015

**Survey Annotations**

Measured Depth (usft)	Vertical Depth (usft)	Local Coordinates		Comment
		+N/-S (usft)	+E/-W (usft)	
14,702.00	7,729.65	-6,554.30	1,289.33	Projection to TD-14702.00' MD