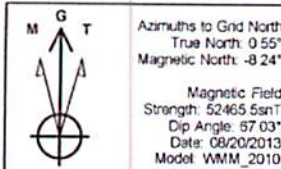




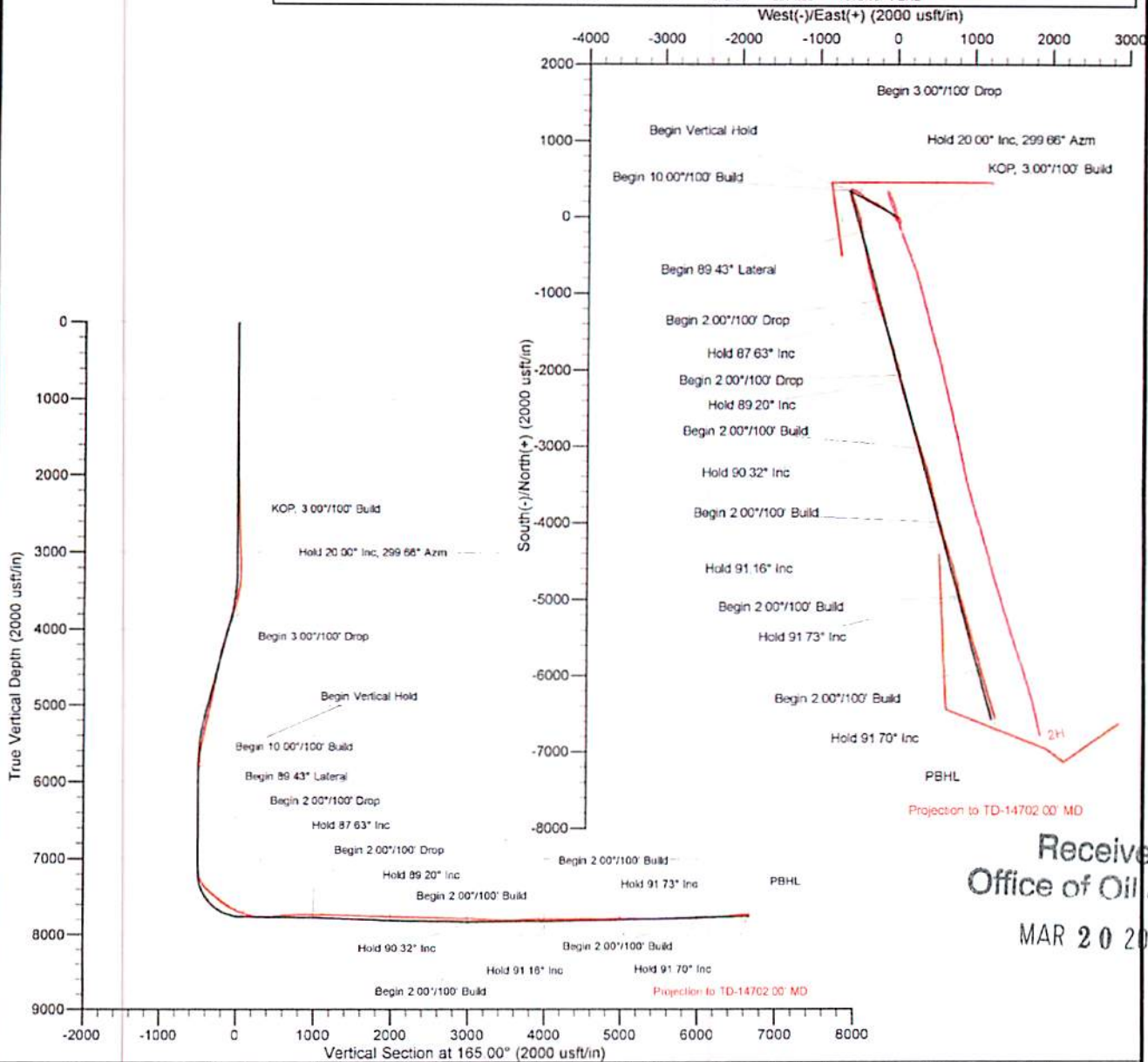
Company: Trans Energy Inc.
 Site: Beaty
 Well: 1H
 Project: Marion County, West Virginia (NAD 83)
 Rig Name: H&P 285



US State Plane 1983
 West Virginia Northern Zone

Created By: HLH
 Date: 15:42, September 16 2013
 Plan: Design #1

ANNOTATIONS									
MD	Inc	Azi	TVD	+N-S	+E-W	V Sect	Departure	Annotation	
3200.00	0.00	0.00	3200.00	0.00	0.00	0.00	0.00	0.00	KOP, 3.00°/100' Build
3886.67	20.00	299.66	3853.21	56.99	-100.09	-80.95	115.18	Hold 20.00° Inc, 299.66° Azm	
5257.11	20.00	299.66	5159.80	292.29	-513.36	-415.20	590.74	Begin 3.00°/100' Drop	
5923.77	0.00	0.00	5813.01	349.28	-613.45	-496.15	705.92	Begin Vertical Hold	
7298.50	0.00	0.00	7187.83	349.28	-613.45	-496.15	705.92	Begin 10.00°/100' Build	
8192.90	89.43	165.00	7750.76	-198.55	-466.53	71.10	1273.17	Begin 89.43° Lateral	
9121.84	89.43	165.00	7770.00	-1095.99	-228.22	1000.00	2202.07	Begin 2.00°/100' Drop	
9211.91	87.63	165.00	7772.31	-1182.96	-202.91	1090.04	2292.11	Hold 87.63° Inc	
10122.65	87.63	165.00	7810.00	-2061.82	32.60	2000.00	3202.07	Begin 2.00°/100' Drop	
10201.35	89.20	165.00	7812.17	-2137.80	52.96	2076.67	3280.74	Hold 89.20° Inc	
11122.77	89.20	165.00	7825.00	-3027.74	291.42	3000.00	4202.07	Begin 2.00°/100' Build	
11178.52	90.32	165.00	7825.23	-3081.58	305.85	3055.74	4257.81	Hold 90.32° Inc	
12122.79	90.32	165.00	7820.00	-3993.67	550.24	4000.00	5202.07	Begin 2.00°/100' Build	
12165.12	91.16	165.00	7819.46	-4034.59	561.19	4042.33	5244.40	Hold 91.16° Inc	
13122.99	91.16	165.00	7900.00	-4959.59	809.06	5000.00	6202.07	Begin 2.00°/100' Build	
13151.09	91.73	165.00	7799.29	-4986.73	616.33	5028.09	6230.18	Hold 91.73° Inc	
14123.44	91.73	165.00	7770.00	-5925.52	1067.87	6000.00	7202.07	Begin 2.00°/100' Build	
14124.76	91.70	165.00	7769.96	-5926.80	1068.22	6001.32	7203.39	Hold 91.70° Inc	
14797.83	91.70	165.00	7750.00	-6576.84	1242.34	6674.09	7876.16	PBHL	



Received
 Office of Oil & Gas
 MAR 20 2015

The customer should only rely on this document after independently verifying all paths, targets, coordinates, lease and hard lines represented. Any decisions made or wells drilled utilizing this or any other information supplied by MS Energy are at the sole risk and responsibility of the customer. MS Energy is not responsible for the accuracy of this schematic or the information contained herein.

Company: Trans Energy Inc.
Project: Marion County, West Virginia (NAD 83)
Site: Beaty
Well: 1H
Wellbore: Wellbore #1
Design: Surveys

Local Co-ordinate Reference: Well 1H
TVD Reference: WELL @ 1327.03usft (H&P 285)
MD Reference: WELL @ 1327.03usft (H&P 285)
North Reference: Grid
Survey Calculation Method: Minimum Curvature
Database: Well Planning Conroe

Project	Marion County, West Virginia (NAD 83)		
Map System:	US State Plane 1983	System Datum:	Mean Sea Level
Geo Datum:	North American Datum 1983		
Map Zone:	West Virginia Northern Zone		

Well	1H					
Well Position	+N/-S	0.00 usft	Northing:	378,233.29 usft	Latitude:	39.5352333
	+E/-W	0.00 usft	Easting:	1,724,776.17 usft	Longitude:	-80.3641694
Position Uncertainty		0.00 usft	Wellhead Elevation:	usft	Ground Level:	1,307.03 usft

Wellbore	Wellbore #1				
Magnetics	Model Name	Sample Date	Declination (°)	Dip Angle (°)	Field Strength (nT)
	WMM_2010	08/20/13	-8.79	67.03	52,466

Design	Surveys				
Audit Notes:					
Version:	1.0	Phase:	ACTUAL	Tie On Depth:	0.00
Vertical Section:	Depth From (TVD) (usft)	+N/-S (usft)	+E/-W (usft)	Direction (°)	
	0.00	0.00	0.00	165.00	

Survey Program	Date	09/16/13			
From (usft)	To (usft)	Survey (Wellbore)	Tool Name	Description	
145.00	14,702.00	MS MWD (Wellbore #1)	MWD	MWD - Standard	

Measured Depth (usft)	Inclination (°)	Azimuth (°)	Vertical Depth (usft)	+N/-S (usft)	+E/-W (usft)	Vertical Section (usft)	Dogleg Rate (°/100usft)	Build Rate (°/100usft)	Turn Rate (°/100usft)
0.00	0.00	0.00	0.00	0.00	0.00	0.00	0.00	0.00	0.00
145.00	0.60	270.30	145.00	0.00	-0.76	-0.20	0.41	0.41	0.00
234.00	0.80	291.40	233.99	0.23	-1.80	-0.69	0.36	0.22	23.71
325.00	0.30	280.40	324.99	0.51	-2.63	-1.17	0.56	-0.55	-12.09
417.00	0.50	322.40	416.98	0.87	-3.11	-1.65	0.37	0.22	45.65
509.00	0.40	336.60	508.98	1.48	-3.48	-2.33	0.16	-0.11	15.43
599.00	0.60	264.00	598.98	1.72	-4.08	-2.72	0.68	0.22	-80.67
690.00	0.50	203.20	689.98	1.31	-4.71	-2.48	0.62	-0.11	-66.81
780.00	0.80	247.30	779.97	0.70	-5.44	-2.09	0.62	0.33	49.00
873.00	0.30	196.00	872.97	0.22	-6.11	-1.79	0.71	-0.54	-55.16
964.00	0.50	197.10	963.96	-0.39	-6.29	-1.25	0.22	0.22	1.21
1,023.00	1.10	236.10	1,022.96	-0.95	-6.84	-0.85	1.32	1.02	66.10
1,118.00	1.30	215.90	1,117.94	-2.33	-8.22	0.13	0.49	0.21	-21.26
1,212.00	1.30	222.10	1,211.91	-3.99	-9.56	1.38	0.15	0.00	6.60
1,306.00	1.50	211.90	1,305.89	-5.82	-10.93	2.80	0.34	0.21	10.85

Received
 Office of Oil & Gas
 COMPASS 5000 1 Build 55
 MAR 20 2015



MS Energy Services

Survey Report



Company: Trans Energy Inc.
Project: Marion County, West Virginia (NAD 83)
Site: Beaty
Well: 1H
Wellbore: Wellbore #1
Design: Surveys

Local Co-ordinate Reference: Well 1H
TVD Reference: WELL @ 1327.03usft (H&P 285)
MD Reference: WELL @ 1327.03usft (H&P 285)
North Reference: Grid
Survey Calculation Method: Minimum Curvature
Database: Well Planning Concoe

Survey

Measured Depth (usft)	Inclination (°)	Azimuth (°)	Vertical Depth (usft)	+N/-S (usft)	+E/-W (usft)	Vertical Section (usft)	Dogleg Rate (°/100usft)	Build Rate (°/100usft)	Turn Rate (°/100usft)
1,401.00	1.40	207.70	1,400.85	-7.91	-12.13	4.50	0.15	-0.11	-4.42
1,495.00	1.70	206.90	1,494.82	-10.17	-13.29	6.38	0.32	0.32	-0.85
1,589.00	0.50	84.10	1,588.81	-11.37	-13.51	7.48	2.14	-1.28	-130.64
1,684.00	1.50	79.30	1,683.79	-11.10	-11.88	7.64	1.06	1.05	-5.05
1,778.00	1.50	77.50	1,777.76	-10.60	-9.47	7.79	0.05	0.00	-1.91
1,872.00	1.60	89.00	1,871.73	-10.31	-6.96	8.16	0.35	0.11	12.23
1,967.00	2.30	96.60	1,966.67	-10.51	-3.74	9.18	0.78	0.74	8.00
2,061.00	1.30	152.20	2,060.63	-11.67	-1.37	10.92	2.02	-1.06	59.15
2,156.00	1.40	183.00	2,155.60	-13.78	-0.92	13.07	0.76	0.11	32.42
2,250.00	2.00	198.00	2,249.56	-16.49	-1.49	15.54	0.79	0.64	15.96
2,344.00	2.60	198.70	2,343.49	-20.07	-2.68	18.69	0.64	0.64	0.74
2,438.00	1.70	191.40	2,437.42	-23.45	-3.64	21.71	1.00	-0.96	-7.77
2,534.00	1.80	175.30	2,533.37	-26.35	-3.80	24.47	0.52	0.10	-16.77
2,628.00	2.10	181.80	2,627.32	-29.54	-3.73	27.57	0.40	0.32	6.91
2,722.00	2.20	176.30	2,721.25	-33.07	-3.67	30.99	0.24	0.11	-5.85
2,816.00	2.80	176.20	2,815.16	-37.16	-3.40	35.01	0.64	0.64	-0.11
2,911.00	2.40	187.50	2,910.07	-41.41	-2.82	39.27	0.59	-0.42	-9.16
2,987.00	2.70	165.80	2,985.99	-44.70	-2.03	42.65	0.41	0.39	-2.24
3,051.00	2.50	154.40	3,049.93	-47.42	-1.06	45.53	0.86	-0.31	-17.81
3,146.00	1.90	211.00	3,144.87	-50.64	-0.98	48.66	2.26	-0.63	59.58
3,240.00	1.90	325.60	3,238.84	-50.69	-2.66	48.28	3.40	0.00	121.91
3,334.00	5.10	316.80	3,332.65	-46.36	-6.40	43.12	3.44	3.40	-9.36
3,429.00	7.60	323.40	3,427.06	-38.24	-13.04	33.56	2.74	2.63	6.95
3,523.00	11.40	323.00	3,519.76	-25.82	-22.34	19.16	4.04	4.04	-0.43
3,617.00	14.60	323.50	3,611.34	-8.88	-34.98	-0.48	3.41	3.40	0.53
3,712.00	17.90	312.80	3,702.55	10.68	-52.82	-23.99	4.68	3.47	-11.26
3,806.00	21.50	313.70	3,791.03	32.40	-75.88	-50.94	3.84	3.83	0.96
3,900.00	22.30	308.50	3,878.26	55.41	-102.30	-80.00	2.23	0.85	-5.53
3,995.00	20.80	308.30	3,966.61	77.08	-129.64	-108.01	1.58	-1.58	-0.21
4,089.00	21.20	307.20	4,054.37	97.70	-156.28	-134.82	0.60	0.43	-1.17
4,183.00	22.30	307.70	4,141.68	118.89	-183.93	-162.44	1.19	1.17	0.53
4,277.00	19.90	304.30	4,229.37	138.81	-211.26	-188.76	2.87	-2.55	-3.62
4,372.00	19.40	299.90	4,318.84	155.79	-238.29	-212.16	1.64	-0.53	-4.63
4,466.00	16.60	295.20	4,408.24	169.29	-263.98	-231.85	3.35	-2.98	-5.00
4,560.00	14.20	294.50	4,498.86	179.79	-286.63	-247.85	2.56	-2.55	-0.74
4,655.00	12.70	296.10	4,591.25	189.22	-306.61	-262.13	1.63	-1.58	1.68
4,749.00	14.50	297.10	4,682.61	199.13	-326.37	-276.81	1.93	1.91	1.06
4,844.00	17.50	301.90	4,773.92	212.09	-349.09	-295.22	3.45	3.16	5.05
4,938.00	16.90	300.30	4,863.72	226.46	-372.88	-315.25	0.81	-0.64	-1.70
5,032.00	16.70	297.80	4,953.71	239.65	-396.63	-334.14	0.80	-0.21	-2.66
5,126.00	16.20	305.40	5,043.87	253.55	-419.26	-353.42	2.35	-0.53	8.09
5,221.00	13.80	317.30	5,135.65	269.56	-437.76	-373.67	4.10	-2.53	12.53
5,315.00	16.10	314.90	5,226.46	287.00	-454.60	-394.88	2.53	2.45	-2.55
5,409.00	15.50	306.60	5,316.92	303.69	-473.91	-416.00	2.49	-0.64	-8.83

Received
 Office of Oil & Gas
 MAR 20 2015



MS Energy Services



Survey Report

Company: Trans Energy Inc
 Project: Marion County, West Virginia (NAD 83)
 Site: Beaty
 Well: 1H
 Wellbore: Wellbore #1
 Design: Surveys

Local Co-ordinate Reference: Well 1H
 TVD Reference: WELL @ 1327.03usft (H&P 285)
 MD Reference: WELL @ 1327.03usft (H&P 285)
 North Reference: Grid
 Survey Calculation Method: Minimum Curvature
 Database: Well Planning Conroe

Survey

Measured Depth (usft)	Inclination (°)	Azimuth (°)	Vertical Depth (usft)	+N/-S (usft)	+E/-W (usft)	Vertical Section (usft)	Dogleg Rate (°/100usft)	Build Rate (°/100usft)	Turn Rate (°/100usft)
5,504.00	14.70	301.50	5,408.65	317.56	-494.38	-434.69	1.63	-0.84	-5.37
5,598.00	14.80	302.70	5,499.55	330.27	-514.66	-452.22	0.34	0.11	1.28
5,692.00	11.00	299.50	5,591.16	341.18	-532.57	-467.39	4.11	-4.04	-3.40
5,786.00	8.40	296.00	5,683.81	348.61	-546.55	-478.19	2.83	-2.77	-3.72
5,881.00	6.70	292.30	5,777.98	353.75	-557.92	-486.10	1.86	-1.79	-3.89
5,975.00	5.10	288.50	5,871.48	357.16	-568.95	-491.73	1.75	-1.70	-4.04
6,069.00	3.90	283.80	5,965.19	359.25	-574.02	-495.57	1.33	-1.28	-5.00
6,164.00	2.90	275.40	6,060.02	360.24	-579.55	-497.97	1.17	-1.05	-8.84
6,258.00	2.20	267.60	6,153.93	360.39	-583.72	-499.19	0.83	-0.74	-8.30
6,352.00	1.80	258.70	6,247.87	360.03	-586.97	-499.68	0.54	-0.43	-9.47
6,446.00	1.20	259.60	6,341.84	359.56	-589.38	-499.85	0.64	-0.64	0.96
6,541.00	1.00	242.90	6,436.82	359.00	-591.10	-499.76	0.40	-0.21	-17.58
6,635.00	0.70	227.80	6,530.81	358.24	-592.26	-499.32	0.40	-0.32	-16.06
6,730.00	0.70	215.80	6,625.80	357.38	-593.03	-498.69	0.15	0.00	-12.63
6,824.00	0.70	204.20	6,719.80	356.39	-593.60	-497.88	0.15	0.00	-12.34
6,918.00	0.70	11.80	6,813.80	356.43	-593.71	-497.95	1.48	0.00	178.30
7,013.00	0.50	198.60	6,908.79	356.61	-593.73	-498.12	1.26	-0.21	-182.32
7,107.00	0.60	180.30	7,002.79	355.73	-593.86	-497.31	0.21	0.11	-19.47
7,202.00	0.40	181.20	7,097.79	354.90	-593.87	-496.51	0.21	-0.21	0.95
7,264.00	3.30	177.40	7,159.75	352.90	-593.80	-494.56	4.68	4.68	-6.13
7,296.00	7.10	166.90	7,191.61	350.05	-593.30	-491.68	12.19	11.88	-32.81
7,327.00	12.70	162.20	7,222.14	344.94	-591.83	-486.36	18.24	18.06	-15.16
7,359.00	16.90	162.80	7,253.07	337.14	-589.38	-478.19	13.13	13.13	1.88
7,390.00	21.70	163.10	7,282.32	327.35	-586.36	-467.96	15.49	15.48	0.97
7,422.00	28.30	163.10	7,311.30	314.41	-582.45	-454.45	20.63	20.63	0.00
7,453.00	34.00	164.10	7,337.82	299.03	-577.93	-438.42	18.46	18.39	3.23
7,484.00	39.30	164.80	7,362.68	281.21	-572.98	-419.93	17.15	17.10	2.26
7,516.00	46.20	164.90	7,386.17	260.26	-567.31	-398.22	21.56	21.56	0.31
7,547.00	48.70	164.50	7,407.13	238.23	-561.28	-375.38	8.12	8.06	-1.29
7,579.00	49.20	164.30	7,428.15	214.99	-554.79	-351.25	1.63	1.56	-0.63
7,610.00	49.80	163.40	7,448.28	192.35	-548.23	-327.69	2.94	1.94	-2.90
7,642.00	50.10	163.30	7,468.67	168.88	-541.21	-303.20	0.97	0.94	-0.31
7,673.00	50.50	162.90	7,488.67	146.06	-534.28	-279.36	1.63	1.29	-1.29
7,705.00	50.80	162.40	7,508.96	122.44	-526.90	-254.64	1.53	0.94	-1.56
7,738.00	50.90	162.40	7,528.53	99.52	-519.63	-230.62	0.32	0.32	0.00
7,767.00	50.80	161.80	7,548.10	76.65	-512.24	-206.61	1.54	-0.32	-1.94
7,799.00	50.70	161.60	7,568.35	53.12	-504.46	-181.87	0.58	-0.31	-0.63
7,830.00	53.10	162.50	7,587.48	29.91	-496.95	-157.51	8.07	7.74	2.90
7,862.00	54.70	163.80	7,606.33	5.17	-489.46	-131.67	5.98	5.00	4.06
7,893.00	57.10	167.70	7,623.72	-19.71	-483.15	-106.02	12.98	7.74	12.58
7,925.00	59.50	170.40	7,640.53	-46.43	-477.99	-78.86	10.38	7.50	8.44
7,956.00	59.30	171.30	7,656.31	-72.77	-473.75	-52.32	2.58	-0.65	2.90
7,988.00	62.90	173.20	7,671.78	-100.53	-469.98	-24.54	12.39	1.25	5.94

Received
 Office of Oil & Gas

MAR 20 2015 Build 65

MS Energy Services

Survey Report

Company: Trans Energy Inc.
 Project: Marion County, West Virginia (NAD 83)
 Site: Beaty
 Well: 1H
 Wellbore: Wellbore #1
 Design: Surveys

Local Co-ordinate Reference: Well 1H
 TVD Reference: WELL @ 1327.03usft (H&P 285)
 MD Reference: WELL @ 1327.03usft (H&P 285)
 North Reference: Grid
 Survey Calculation Method: Minimum Curvature
 Database: Well Planning Conroe

Survey

Measured Depth (usft)	Inclination (°)	Azimuth (°)	Vertical Depth (usft)	+N/-S (usft)	+E/-W (usft)	Vertical Section (usft)	Dogleg Rate (°/100usft)	Build Rate (°/100usft)	Turn Rate (°/100usft)
8,019.00	67.00	174.30	7,684.90	-128.44	-466.93	3.21	13.61	13.23	3.55
8,051.00	69.40	173.50	7,696.78	-157.98	-463.77	32.56	7.85	7.50	-2.50
8,082.00	71.30	172.30	7,707.21	-186.95	-460.16	61.48	7.13	6.13	-3.87
8,114.00	71.90	170.30	7,717.31	-216.96	-455.56	91.66	6.22	1.88	-6.25
8,145.00	72.40	169.50	7,726.81	-246.01	-450.39	121.06	2.94	1.61	-2.58
8,176.00	73.00	168.60	7,736.03	-275.07	-444.77	150.58	3.38	1.94	-2.90
8,208.00	75.40	166.90	7,744.74	-305.15	-438.23	181.33	9.08	7.50	-5.31
8,239.00	75.80	167.40	7,752.45	-334.43	-431.55	211.34	2.03	1.29	1.61
8,271.00	79.50	168.60	7,759.30	-365.00	-425.06	242.55	12.13	11.56	3.75
8,302.00	83.30	169.40	7,763.93	-395.08	-419.21	273.12	12.52	12.26	2.58
8,334.00	87.30	169.30	7,766.55	-426.42	-413.32	304.91	12.50	12.50	-0.31
8,428.00	94.60	168.40	7,764.99	-518.57	-395.16	398.63	7.82	7.77	-0.96
8,522.00	94.50	168.30	7,757.54	-610.34	-376.23	492.17	0.15	-0.11	-0.11
8,616.00	94.90	166.80	7,749.83	-701.82	-356.04	585.76	1.65	0.43	-1.60
8,711.00	94.10	166.70	7,742.38	-794.01	-334.33	680.42	0.85	-0.84	-0.11
8,805.00	92.70	164.60	7,736.81	-884.91	-311.08	774.24	2.68	-1.49	-2.23
8,899.00	89.50	162.20	7,735.00	-974.95	-284.23	868.17	4.25	-3.40	-2.55
8,993.00	89.00	163.20	7,736.23	-1,064.69	-256.28	962.08	1.19	-0.53	1.06
9,088.00	88.10	162.40	7,738.64	-1,155.41	-228.20	1,056.98	1.27	-0.95	-0.84
9,182.00	88.00	162.10	7,741.83	-1,244.88	-199.56	1,150.82	0.34	-0.11	-0.32
9,277.00	88.50	162.00	7,744.74	-1,335.22	-170.29	1,245.65	0.54	0.53	-0.11
9,371.00	88.90	161.80	7,746.87	-1,424.54	-141.10	1,339.48	0.48	0.43	-0.21
9,465.00	88.80	161.50	7,748.75	-1,513.75	-111.51	1,433.30	0.34	-0.11	-0.32
9,559.00	88.70	161.30	7,750.80	-1,602.81	-81.53	1,527.10	0.24	-0.11	-0.21
9,654.00	87.80	163.20	7,753.71	-1,693.24	-52.59	1,621.94	2.21	-0.95	2.00
9,748.00	88.50	164.90	7,756.74	-1,783.57	-26.77	1,715.87	1.95	0.74	1.81
9,843.00	88.60	165.20	7,759.14	-1,875.33	-2.27	1,810.84	0.33	0.11	0.32
9,937.00	88.70	167.00	7,761.36	-1,966.55	20.30	1,904.79	1.92	0.11	1.91
10,031.00	88.70	165.30	7,763.49	-2,057.79	42.80	1,998.75	1.81	0.00	-1.81
10,125.00	88.30	164.90	7,765.95	-2,148.60	66.96	2,092.71	0.60	-0.43	-0.43
10,220.00	88.30	164.90	7,768.77	-2,240.28	91.70	2,187.67	0.00	0.00	0.00
10,314.00	88.70	165.50	7,771.23	-2,331.13	115.70	2,281.64	0.77	0.43	0.64
10,409.00	89.10	166.30	7,773.06	-2,423.25	138.84	2,376.81	0.94	0.42	0.84
10,503.00	89.40	166.50	7,774.29	-2,514.60	160.94	2,470.57	0.38	0.32	0.21
10,597.00	89.70	165.20	7,775.02	-2,605.74	183.92	2,564.56	1.42	0.32	1.36
10,691.00	87.90	163.50	7,776.99	-2,696.23	209.27	2,658.52	2.63	-1.01	0.11
10,786.00	88.20	163.60	7,780.23	-2,787.29	236.15	2,753.44	0.33	0.32	0.11
10,880.00	88.30	163.10	7,783.10	-2,877.31	263.08	2,847.36	0.54	0.11	0.59
10,974.00	88.00	163.60	7,786.13	-2,967.32	289.99	2,941.27	0.62	-0.32	0.53
11,069.00	88.00	162.50	7,789.45	-3,058.14	317.67	3,036.15	1.16	0.00	-1.16
11,163.00	86.20	162.40	7,794.20	-3,147.64	345.98	3,129.94	1.92	-1.91	-0.11
11,257.00	86.40	162.70	7,800.27	-3,237.13	374.11	3,223.65	0.38	0.21	0.32
11,352.00	86.50	163.40	7,806.15	-3,327.83	401.75	3,318.42	0.74	0.11	0.74

Received
 Office of Oil & Gas
 MAR 20 2015

Company: Trans Energy Inc.
Project: Marion County, West Virginia (NAD 83)
Site: Beaty
Well: 1H
Wellbore: Wellbore #1
Design: Surveys

Local Co-ordinate Reference: Well 1H
TVD Reference: WELL @ 1327.03usft (H&P 285)
MD Reference: WELL @ 1327.03usft (H&P 285)
North Reference: Grid
Survey Calculation Method: Minimum Curvature
Database: Well Planning Conroe

Survey

Measured Depth (usft)	Inclination (°)	Azimuth (°)	Vertical Depth (usft)	+N/-S (usft)	+E/-W (usft)	Vertical Section (usft)	Dogleg Rate (°/100usft)	Build Rate (°/100usft)	Turn Rate (°/100usft)
11,446.00	88.70	166.00	7,810.09	-3,418.40	426.53	3,412.32	3.62	2.34	2.77
11,540.00	91.90	166.80	7,809.60	-3,509.75	448.63	3,506.28	3.51	3.40	0.85
11,634.00	92.00	167.10	7,806.40	-3,601.27	469.84	3,600.17	0.34	0.11	0.32
11,729.00	92.00	166.70	7,803.08	-3,693.74	491.36	3,695.06	0.42	0.00	-0.42
11,823.00	92.40	166.70	7,799.47	-3,785.16	512.97	3,788.95	0.43	0.43	0.00
11,917.00	92.00	166.80	7,795.86	-3,876.59	534.50	3,882.83	0.44	-0.43	0.11
12,012.00	89.70	163.90	7,794.45	-3,968.47	558.52	3,977.80	3.90	-2.42	-3.05
12,106.00	90.20	164.30	7,794.54	-4,058.87	584.27	4,071.79	0.68	0.53	0.43
12,200.00	90.10	163.40	7,794.29	-4,149.16	610.42	4,165.77	0.96	-0.11	-0.96
12,295.00	90.10	163.20	7,794.12	-4,240.16	637.72	4,260.73	0.21	0.00	-0.21
12,389.00	89.90	163.80	7,794.12	-4,330.28	664.41	4,354.70	0.67	-0.21	0.64
12,484.00	90.80	162.80	7,793.54	-4,421.27	691.71	4,449.65	1.42	0.95	-1.05
12,578.00	90.40	163.00	7,792.56	-4,511.11	719.35	4,543.58	0.48	-0.43	0.21
12,672.00	88.80	164.50	7,793.22	-4,601.35	745.65	4,637.55	2.33	-1.70	1.60
12,766.00	89.50	164.80	7,794.61	-4,691.99	770.53	4,731.54	0.81	0.74	0.32
12,860.00	91.70	166.80	7,793.63	-4,783.10	793.59	4,825.51	3.16	2.34	2.13
12,955.00	92.40	167.90	7,790.23	-4,875.73	814.38	4,920.37	1.37	0.74	1.16
13,049.00	90.30	164.70	7,788.01	-4,967.01	836.63	5,014.30	4.07	-2.23	-3.40
13,143.00	90.60	164.70	7,787.27	-5,057.68	861.44	5,108.30	0.32	0.32	0.00
13,238.00	88.70	164.60	7,787.86	-5,149.29	886.58	5,203.29	2.00	-2.00	-0.11
13,332.00	88.70	164.80	7,789.99	-5,239.93	911.38	5,297.27	0.21	0.00	0.21
13,428.00	88.70	164.10	7,792.12	-5,330.47	936.57	5,391.24	0.74	0.00	-0.74
13,521.00	90.10	163.50	7,793.12	-5,421.69	963.07	5,486.21	1.60	1.47	-0.63
13,615.00	90.30	163.80	7,792.79	-5,511.88	989.54	5,580.18	0.38	0.21	0.32
13,709.00	90.10	163.70	7,792.46	-5,602.13	1,015.84	5,674.16	0.24	-0.21	-0.11
13,803.00	90.60	163.80	7,791.88	-5,692.37	1,042.14	5,768.13	0.54	0.53	0.11
13,898.00	93.10	164.60	7,788.82	-5,783.73	1,067.99	5,863.07	2.76	2.63	0.84
13,992.00	93.90	165.00	7,783.08	-5,874.27	1,092.59	5,956.89	0.95	0.85	0.43
14,086.00	93.90	164.90	7,776.69	-5,964.83	1,116.95	6,050.67	0.11	0.00	-0.11
14,180.00	93.50	164.30	7,770.62	-6,055.27	1,141.86	6,144.47	0.77	-0.43	-0.64
14,275.00	94.00	163.80	7,764.41	-6,146.41	1,167.90	6,239.26	0.74	0.53	-0.53
14,369.00	94.60	163.50	7,757.36	-6,236.36	1,194.29	6,332.97	0.71	0.64	-0.32
14,463.00	94.70	163.10	7,749.74	-6,326.10	1,221.21	6,426.61	0.44	0.11	-0.43
14,557.00	94.80	163.50	7,741.95	-6,415.82	1,248.13	6,520.25	0.44	0.11	0.43
14,652.00	94.90	163.40	7,733.92	-6,506.56	1,275.10	6,614.88	0.15	0.11	-0.11
14,702.00	94.90	163.40	7,729.65	-6,554.30	1,289.33	6,664.67	0.00	0.00	0.00

Projection to TD-14702.00' MD

Survey Annotations

Measured Depth (usft)	Vertical Depth (usft)	Local Coordinates		Comment
		+N/-S (usft)	+E/-W (usft)	
14,702.00	7,729.65	-6,554.30	1,289.33	Projection to TD-14702.00' MD

Received
 Office of Oil & Gas

MAR 20 2015