

WV 515497
EQT Production Company
Bower et al LEASE
111.0 Acres ±

Lease No.	Acres	Contact
991926	30	Kennie S. Kettner Jr. et. al.
48-12-234	80.17	Trans Energy
48-12-233	40.8	Trans Energy
993303	106.5	East Resources Inc. et. al.
991927	27	Dellah Harris et. al.

Latitude: 39° 35' 00"

WV 515497 Well Point Coordinates

Top Hole Coordinates		
NAD 27 S.P.C. (FL)	N: 389,072.603	E: 1,720,956.546
NAD 27 GEO	LAT: 39.564011	LONG: 80.489790
NAD 83 UTM 17N (M)	N 4,379,502.3	E: 543,843.5
NAD 83 S.P.C. (FL)	N 389,110.2	E: 1,689,517.8
Landing Point Coordinates		
NAD 27 S.P.C. (FL)	N: 388,608.178	E: 1,720,434.536
NAD 27 GEO	LAT: 39.562720	LONG: 80.491624
NAD 83 UTM 17N (M)	N 4,379,358.1	E: 543,686.8
NAD 83 S.P.C. (FL)	N 388,645.8	E: 1,688,995.8
Bottom Hole Coordinates		
NAD 27 S.P.C. (FL)	N: 384,523.115	E: 1,722,467.344
NAD 27 GEO	LAT: 39.551567	LONG: 80.484255
NAD 83 UTM 17N (M)	N 4,378,123.9	E: 544,326.8
NAD 83 S.P.C. (FL)	N 384,560.7	E: 1,691,028.4

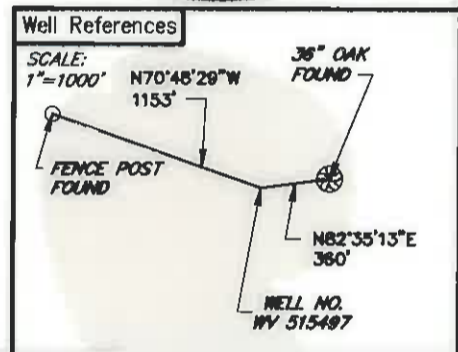
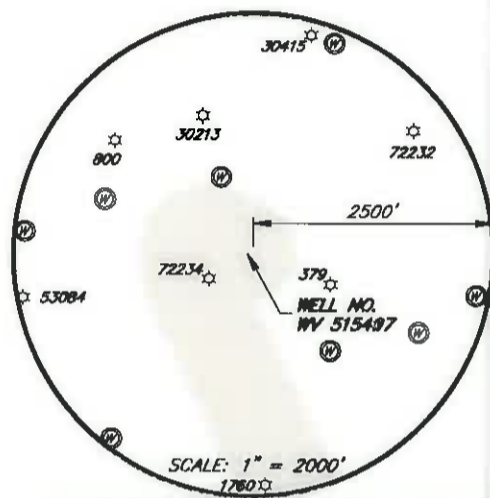
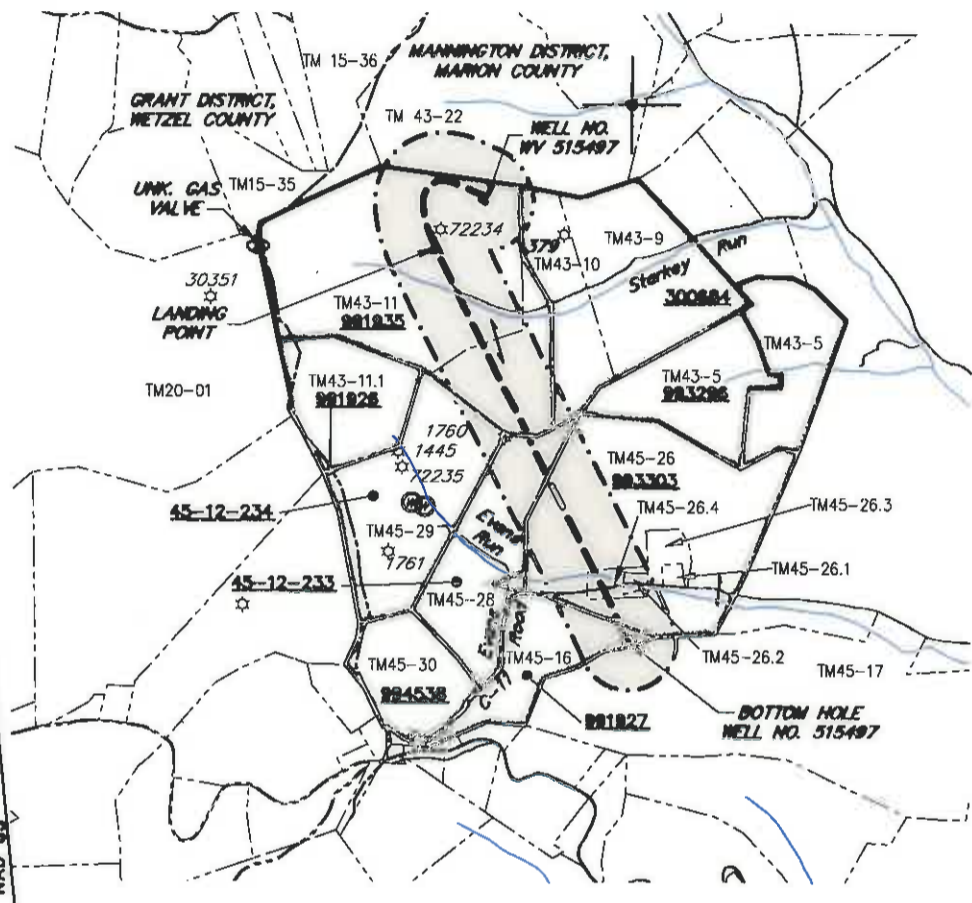
Longitude: 80° 27' 30"

LEGEND

- ☆ EXISTING OIL/GAS WELL
- ⊙ WATER FEATURE
- ▲ WELL HEAD TOP HOLE
- WELL LANDING POINT
- WELL BOTTOM HOLE
- REBAR FOUND
- STONE FOUND
- WELL LATERAL LINE
- LEASE BOUNDARY
- BUFFER
- PROPERTY LINE
- STREAM
- 300' LATERAL COLLECTION

Coordinate Notes
West Virginia Coordinate System of 1927 (North Zone) Based upon Differential GPS Measurements.
Plat orientation, Corner and well ties are based upon the grid north meridian.
Well location references are based upon the grid north meridian.
UTM Coordinates are NAD83, Zone 17 Meters.

GLO 76



(+) DENOTES LOCATION OF WELL ON UNITED STATES TOPOGRAPHIC MAPS



I, THE UNDERSIGNED, HEREBY CERTIFY THAT THIS PLAT IS CORRECT TO THE BEST OF MY KNOWLEDGE AND BELIEF AND SHOWS ALL THE INFORMATION REQUIRED BY LAW AND REGULATIONS ISSUED AND PRESCRIBED BY THE DEPARTMENT OF ENVIRONMENTAL PROTECTION.

[Signature]



FILE NO.: EES-60635
DRAWING NO.: GLO76 Well Plat
SCALE: 1" = 2000'
MINIMUM DEGREE OF ACCURACY: ±3'
PROVEN SOURCE OF ELEVATION: GPS

STATE OF WEST VIRGINIA
DEPARTMENT OF ENVIRONMENTAL PROTECTION
OFFICE OF OIL AND GAS

DATE: DECEMBER 18, 2015
OPERATORS WELL NO. WV 515497
API WELL NO. 02332
STATE: 47 COUNTY: 049 PERMIT: 02322

WELL TYPE: OIL GAS LIQUID INJECTION WASTE DISPOSAL (IF GAS) PRODUCTION: STORAGE DEEP SHALLOW
LOCATION, ELEVATION: 1424' (Ground) 1455' (Prop.) WATERSHED: Starkey Run QUADRANGLE: GLOVER GAP, WV
DISTRICT: MANNINGTON COUNTY: Marion
SURFACE OWNER: Robert E. Tonkery ACREAGE: 111.00± AC
ROYALTY OWNER: Lynn Ann Brower, et al LEASE NO.: 991935 ACREAGE: 111.00± AC
PROPOSED WORK: DRILL CONVERT DRILL DEEPER FRACTURE OR STIMULATE PLUG OFF OLD FORMATION
 PERFORATE NEW FORMATION OTHER PHYSICAL CHANGE IN WELL (SPECIFY)
 PLUG AND ABANDON CLEAN OUT AND REPLUG TARGET FORMATION: MARCELLUS ESTIMATED DEPTH: 7,675'

WELL OPERATOR: EQT Production Company DESIGNATED AGENT: Rex C. Ray
ADDRESS: 115 Professional Pl. P.O. Box 280 ADDRESS: 115 Professional Pl. P.O. Box 280
Bridgeport, WV 26330 Bridgeport, WV 26330