

WV 515525
EQT Production Company
Bower et al LEASE
111.0 Acres ±

Lease No.	Acres	Owner
991926	30	Kenneth S. Ketterer Jr. et. al.
49-12-234	60.17	Trans Energy
49-12-233	40.8	Trans Energy
993303	106.5	East Resources Inc. et. al.
991927	27	Delliah Harris et. al.

Latitude: 39° 35' 00"

WV 515525 Well Point Coordinates

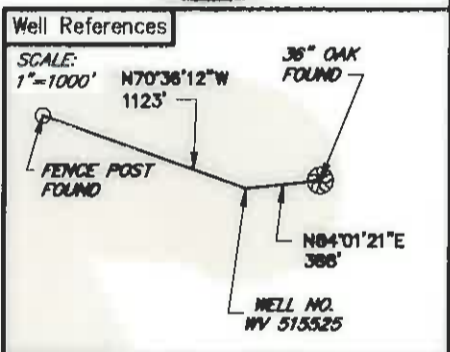
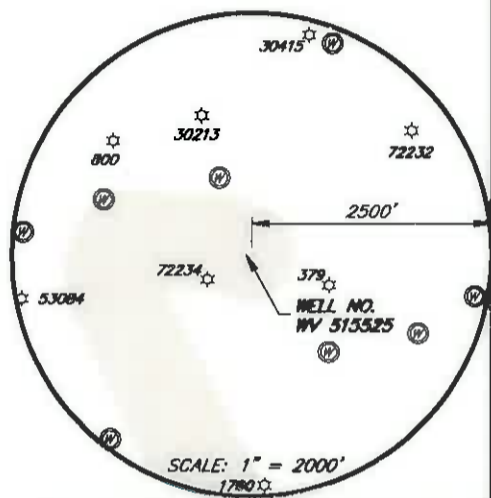
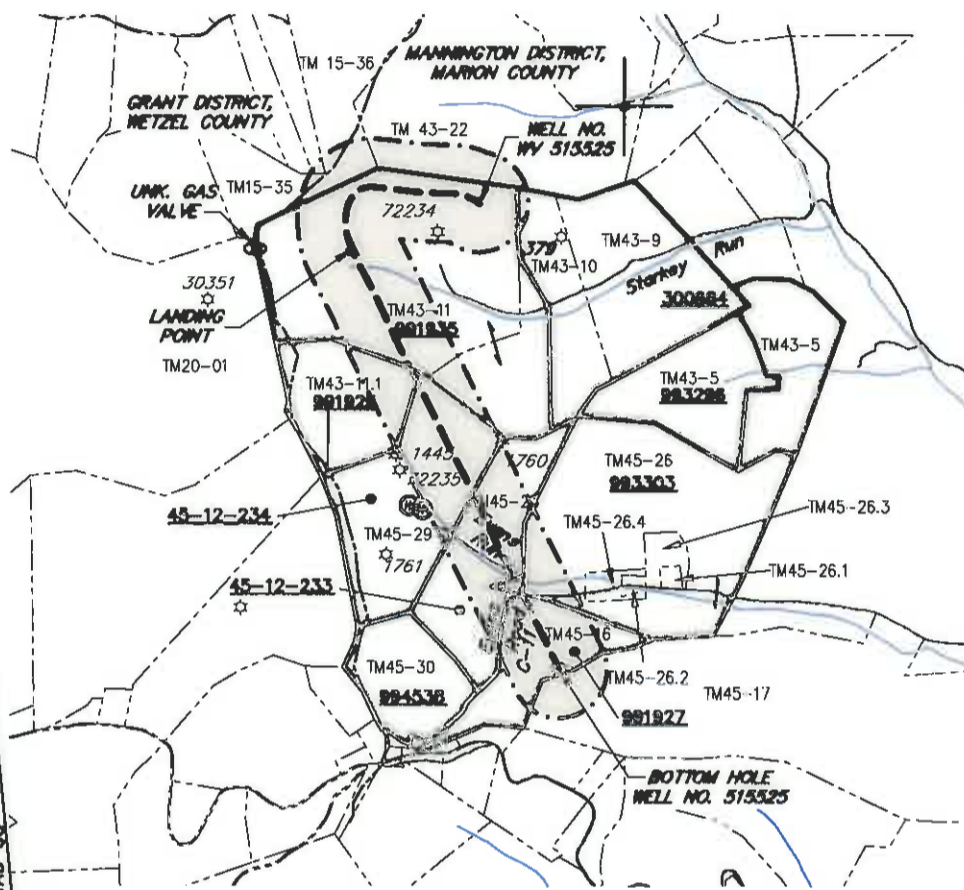
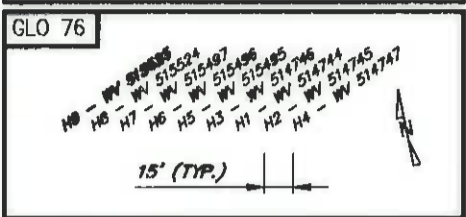
Top Hole Coordinates		
NAD 27 S.P.C. (FL)	N: 389,054.66	E: 1,721,044.74
NAD 27 GEO	LAT: 39.563965	LONG: 80.488477
NAD 83 UTM 17N (M)	N 4,379,497.3	E: 543,870.4
NAD 83 S.P.C. (FL)	N 389,082.3	E: 1,689,606.0
Landing Point Coordinates		
NAD 27 S.P.C. (FL)	N: 388,618.55	E: 1,719,592.69
NAD 27 GEO	LAT: 39.562723	LONG: 80.494610
NAD 83 UTM 17N (M)	N 4,379,357.0	E: 543,430.2
NAD 83 S.P.C. (FL)	N 388,656.2	E: 1,688,153.9
Bottom Hole Coordinates		
NAD 27 S.P.C. (FL)	N: 384,280.68	E: 1,721,767.84
NAD 27 GEO	LAT: 39.550825	LONG: 80.486726
NAD 83 UTM 17N (M)	N 4,378,040.4	E: 544,115.0
NAD 83 S.P.C. (FL)	N 384,298.3	E: 1,690,328.9

Longitude: 80° 27' 30"

LEGEND

- ☆ EXISTING OIL/GAS WELL
- ⊙ WATER FEATURE
- ⊙ WELL HEAD TOP HOLE
- ▲ WELL LANDING POINT
- WELL BOTTOM HOLE
- REBAR FOUND
- STONE FOUND
- - - - - WELL LATERAL LINE
- LEASE BOUNDARY
- BUFFER
- - - - - PROPERTY LINE
- STREAM
- - - - - 500' LATERAL COLLECTION

Coordinate Notes
West Virginia Coordinate System of 1927 (North Zone) Based upon Differential GPS Measurements.
Plat orientation, Corner and well ties are based upon the grid north meridian.
Well location references are based upon the grid north meridian.
UTM Coordinates are NAD83, Zone 17 Meters.



(+) DENOTES LOCATION OF WELL ON UNITED STATES TOPOGRAPHIC MAPS



I, THE UNDERSIGNED, HEREBY CERTIFY THAT THIS PLAT IS CORRECT TO THE BEST OF MY KNOWLEDGE AND BELIEF AND SHOWS ALL THE INFORMATION REQUIRED BY LAW AND REGULATIONS ISSUED AND PRESCRIBED BY THE DEPARTMENT OF ENVIRONMENTAL PROTECTION.



FILE NO.: EES-80635
DRAWING NO.: GLO76_Well Plat
SCALE: 1" = 2000'
MINIMUM DEGREE OF ACCURACY: ±3'
PROVEN SOURCE OF ELEVATION: GPS

STATE OF WEST VIRGINIA
DEPARTMENT OF ENVIRONMENTAL PROTECTION
OFFICE OF OIL AND GAS

DATE: DECEMBER 18, 2015
OPERATORS WELL NO. WV 515525
API WELL NO. 47 049 02334
STATE COUNTY PERMIT

WELL TYPE: OIL GAS LIQUID INJECTION WASTE DISPOSAL (IF GAS) PRODUCTION: STORAGE DEEP SHALLOW
LOCATION, ELEVATION: 1424' (Ground) 1455' (Prop.) WATERSHED: Starkey Run QUADRANGLE: GLOVER GAP, WV
DISTRICT: MANNINGTON COUNTY: Marion
SURFACE OWNER: Robert E. Tonkery ACREAGE: 111.00± AC
ROYALTY OWNER: Lynn Ann Brower, et al LEASE NO.: 991935 ACREAGE: 113.00± AC
PROPOSED WORK: DRILL CONVERT DRILL DEEPER FRACTURE OR STIMULATE PLUG OFF OLD FORMATION
 PERFORATE NEW FORMATION OTHER PHYSICAL CHANGE IN WELL (SPECIFY)
 PLUG AND ABANDON CLEAN OUT AND REPLUG TARGET FORMATION: MARCELLUS ESTIMATED DEPTH: 7,678'

WELL OPERATOR: EQT Production Company DESIGNATED AGENT: Rex. C. Ray
ADDRESS: 115 Professional Pl. P.O. Box 280 ADDRESS: 115 Professional Pl. P.O. Box 280
Bridgeport, WV 26330 Bridgeport, WV 26330

WWW.ENCOMPASSSERVICES.COM PLOT DATE: 12/18/2015 CAD FILE: GLO76_WELL_PLAT_12-01-2015.DWG