

bottom hole 80°28' 58.99" (80.483053)

7000'

top hole 80°28' 02.74" (80.467428)

2630'

plat well location

LATITUDE 39°35' 00"

MINGER, ET AL,
+/- 347.71 ACRE UNIT

620'

bottom hole 39°34' 53.93" (39.581647)

5010'

80°27' 30"

LONGITUDE

top hole 39°34' 10.55" (39.569597)

5010'

top hole 39°34' 10.55" (39.569597)

5010'

top hole 39°34' 10.55" (39.569597)

5010'

top hole 39°34' 10.55" (39.569597)

5010'

top hole 39°34' 10.55" (39.569597)

5010'

top hole 39°34' 10.55" (39.569597)

5010'

top hole 39°34' 10.55" (39.569597)

5010'

top hole 39°34' 10.55" (39.569597)

5010'

top hole 39°34' 10.55" (39.569597)

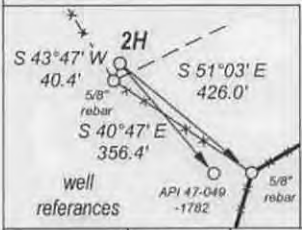
5010'

top hole 39°34' 10.55" (39.569597)

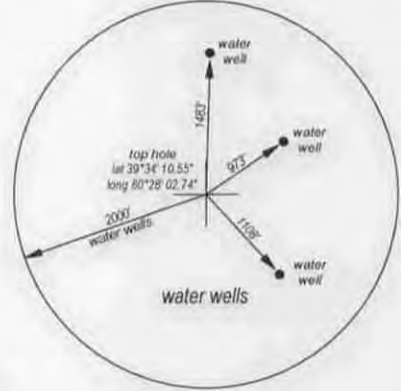
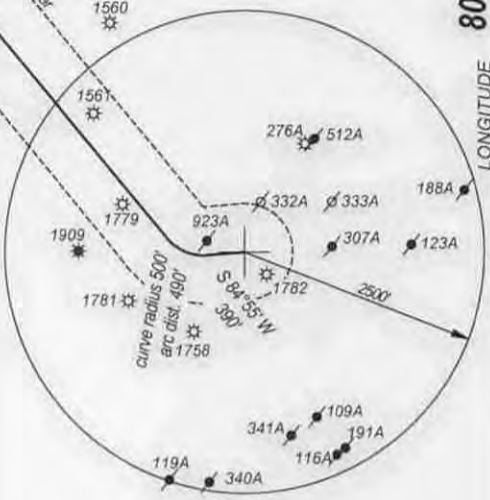
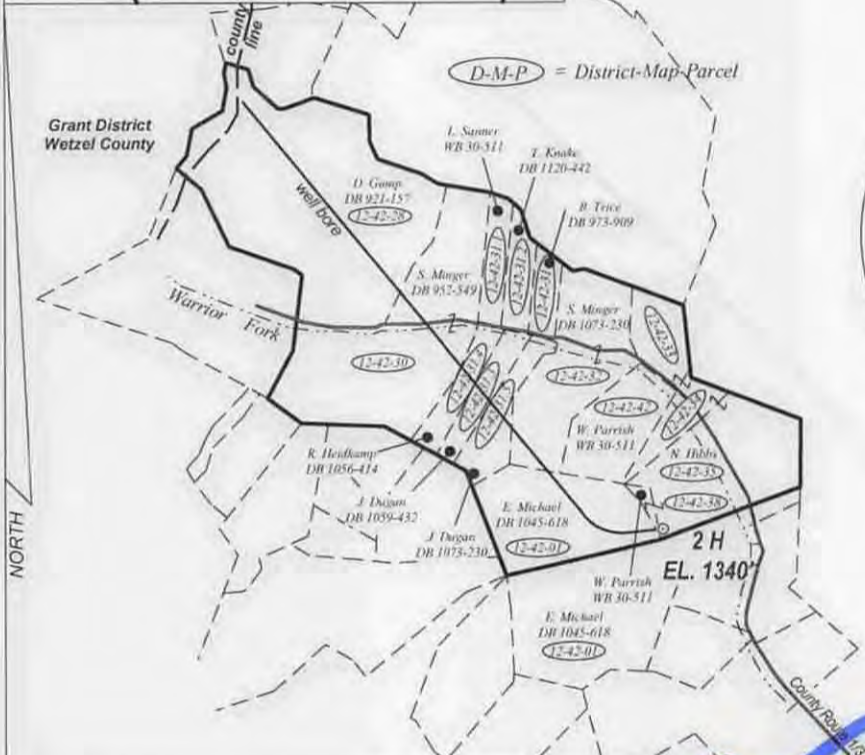
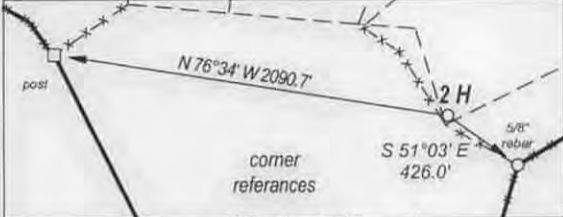
5010'

top hole 39°34' 10.55" (39.569597)

5010'



Permitted wells shown within 500' of bore hole
 All water wells within 2000' of top hole shown
 All buildings of any kind shown within 625' of top hole



UTM NAD 83
 meters
 top hole
 N: 4380123.930
 E: 545744.459
 bottom hole
 N: 4381453.582
 E: 544394.659

FILE NO. _____
 DRAWING NO. _____
 SCALE 1" = 2000'
 MINIMUM DEGREE OF ACCURACY 1 : 200
 PROVEN SOURCE OF ELEVATION GPS OBSERVATION

I, THE UNDERSIGNED, HEREBY CERTIFY THAT THIS PLAT IS CORRECT TO THE BEST OF MY KNOWLEDGE AND BELIEF AND SHOWS ALL THE INFORMATION REQUIRED BY LAW AND THE REGULATIONS ISSUED AND PRESCRIBED BY THE DEPARTMENT OF ENERGY.

(SIGNED) _____
 PROFESSIONAL SURVEYOR: 551



STATE OF WEST VIRGINIA
DEPARTMENT OF ENERGY
DIVISION OF OIL AND GAS

DATE OCTOBER 6TH, 2014
 OPERATORS WELL NO. MINGER 2H

API 47 - 049 -02367
 STATE COUNTY PERMIT

WELL TYPE: OIL XX GAS XX LIQUID INJECTION WASTE DISPOSAL
 (IF GAS) PRODUCTION XX STORAGE DEEP SHALLOW XX

LOATION: ELEVATION 1340' WATER SHED BARTHOLOMEW FORK
 DISTRICT MANNINGTON COUNTY MARION QUADRANGLE GLOVER GAP

SURFACE OWNER NATHANAEL C. HIBBS ACREAGE 51.75
 OIL & GAS ROYALTY MINGER, ET AL LEASE AC +/- 347.71

PROPOSED WORK: DRILL XX CONVERT DRILL DEEPER REDRILL
 FRACTURE OR STIMULATE PLUG OFF OLD FORMATION
 PERFORATE NEW FORMATION
 OTHER PHYSICAL CHANGE IN WELL
 PLUG AND ABANDON CLEAN OUT AND REPLUG

TARGET FORMATION MARCELLUS SHALE ESTIMATED DEPTH 7200'

WELL OPERATOR TRANS ENERGY, INC. DESIGNATED AGENT LOREN BAGLEY
 ADDRESS P. O. BOX 393 ADDRESS P. O. BOX 393
ST. MARYS, WV 26170 ST. MARYS, WV 26170

FORM WW-6

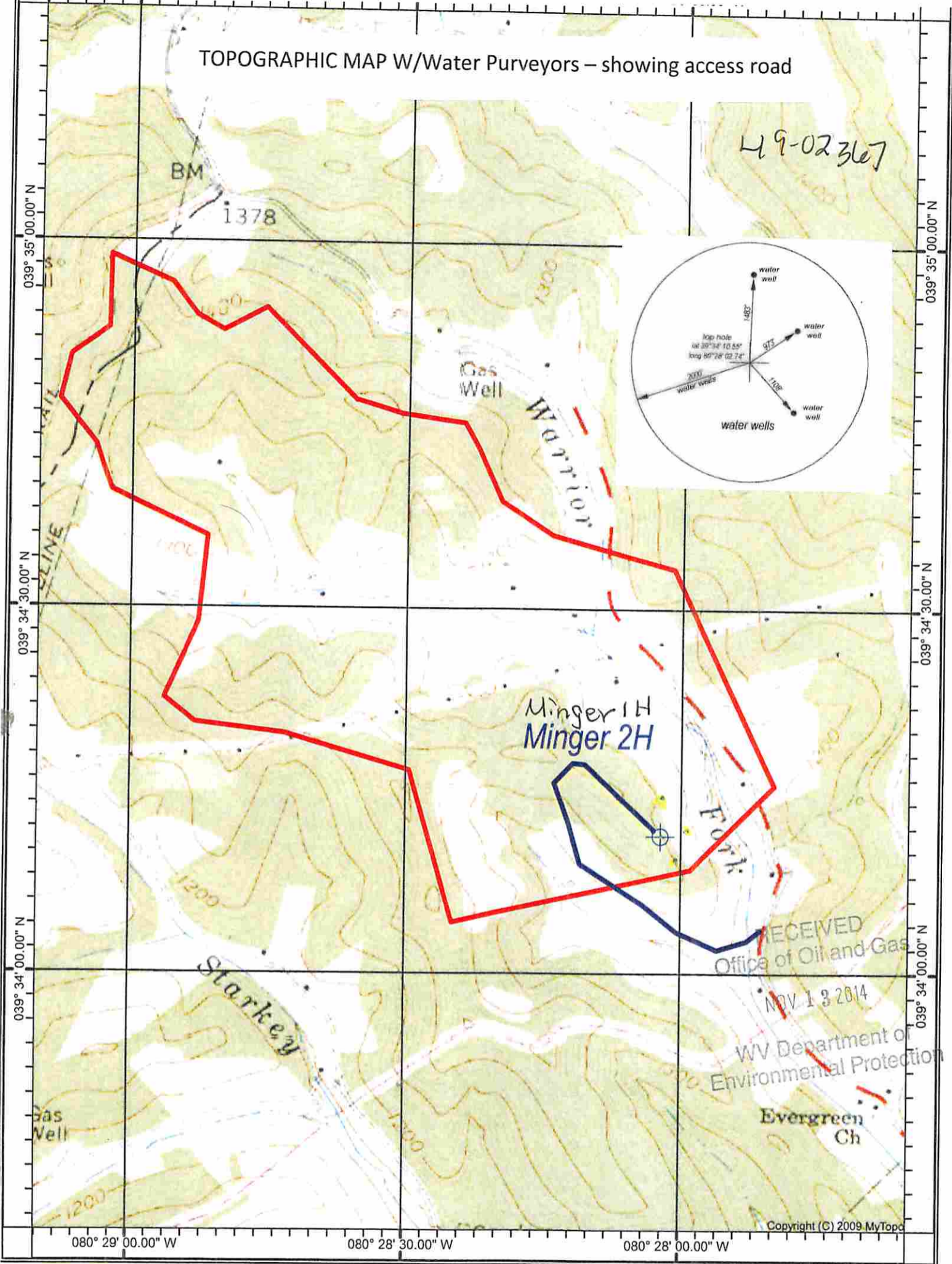
COUNTY NAME

PREMIT

03/13/2015

TOPOGRAPHIC MAP W/Water Purveyors – showing access road

49-02367



GLOVER GAP QUADRANGLE

SCALE 1" = 1000'

TRANS ENERGY, INC.

WELL: MINGER 2H
MINGER, ET AL +/- 347.71 ACRE UNIT

MANNINGTON DISTRICT MARION COUNTY WEST VIRGINIA

WRN
11-7-14

03/13/2015