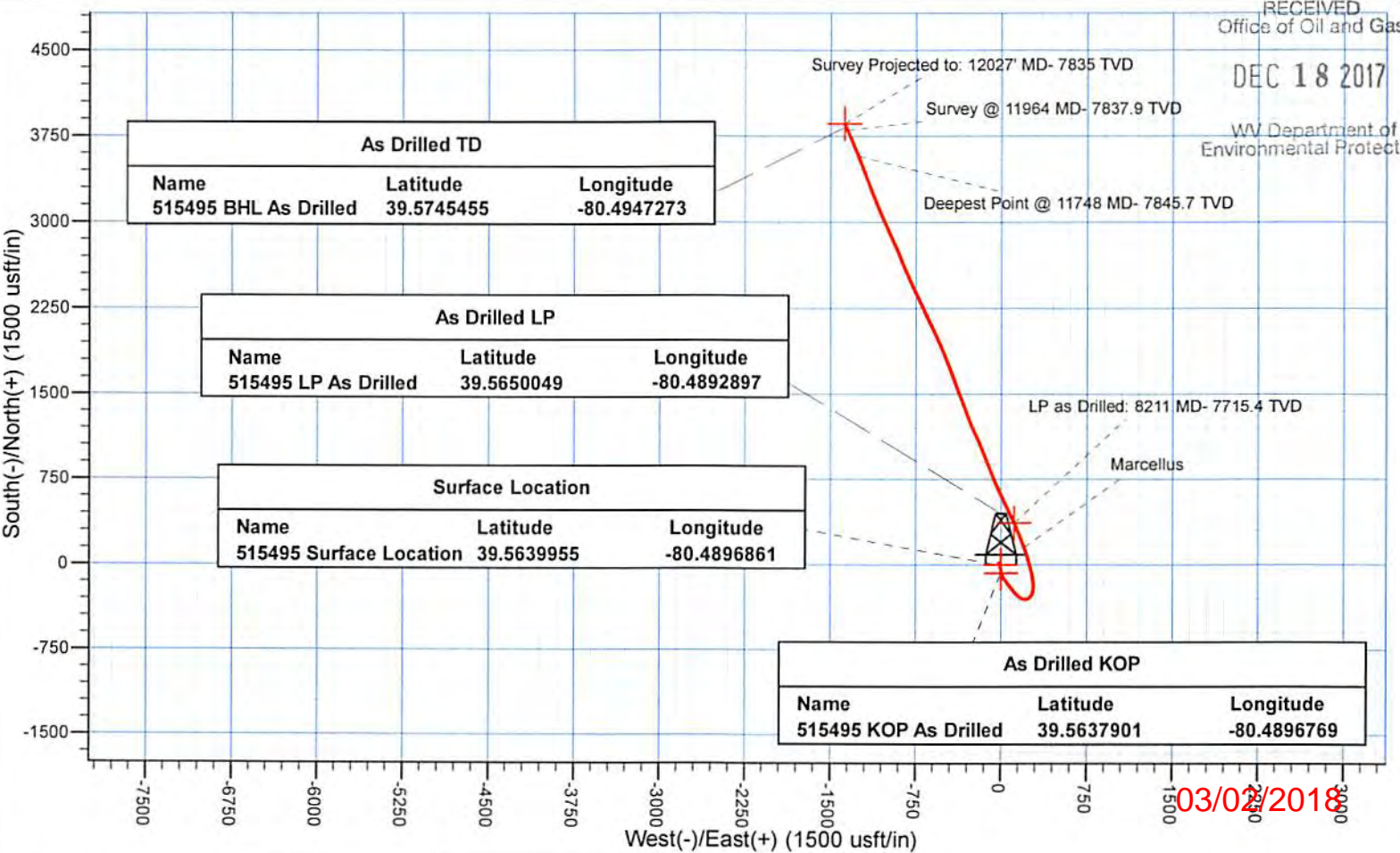
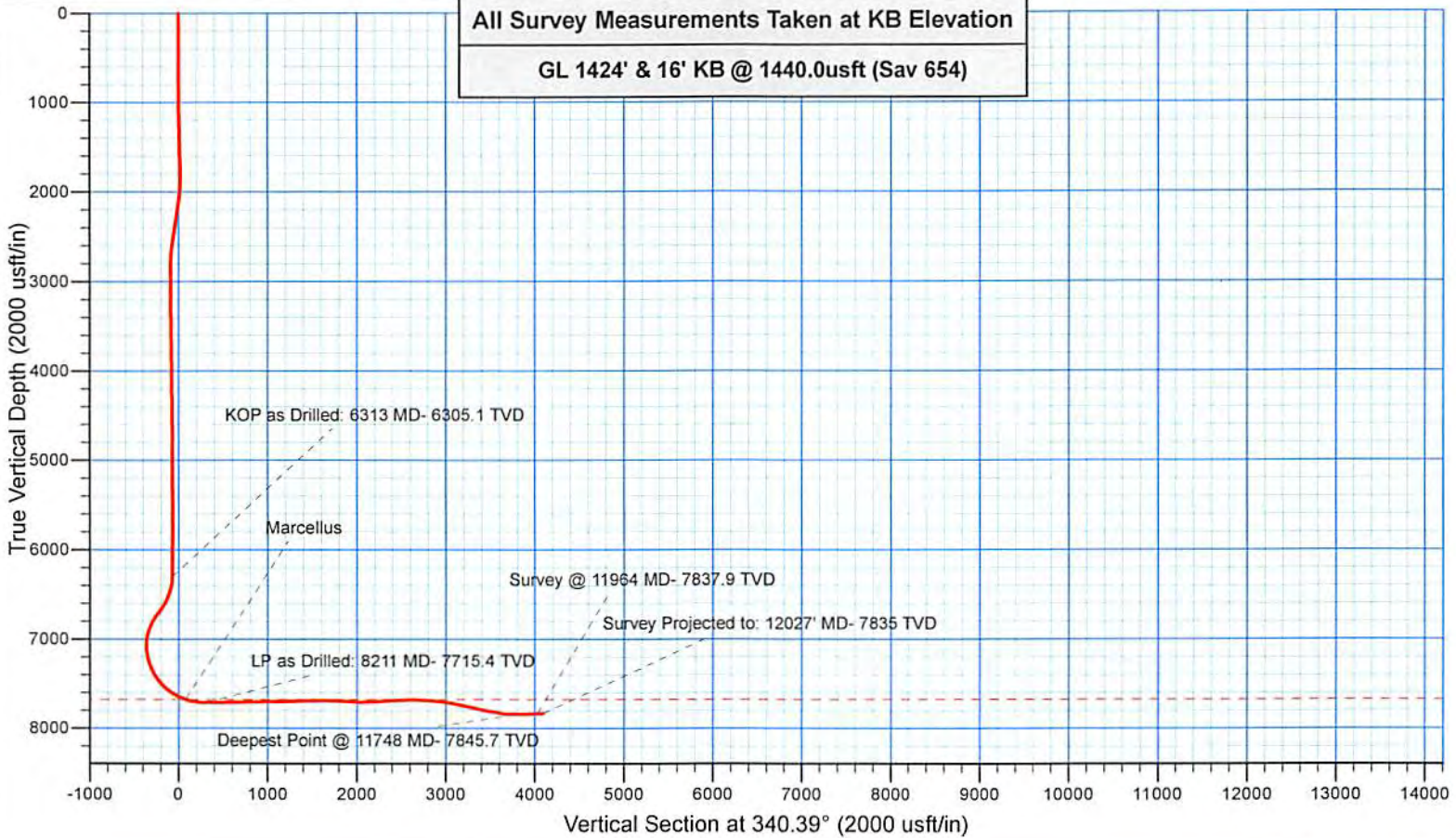




Where energy meets innovation.

Project: Marion County, WV
 Site: GLO76 Pad
 Well: #515495 - Marcellus
 Wellbore Main Wellbore
 Design: 515495 As Drilled



RECEIVED
Office of Oil and Gas

DEC 18 2017

WV Department of
Environmental Protection

03/02/2018



Where energy meets innovation.

EQT PRODUCTION

Marion County, WV

GLO76 Pad

#515495 - Marcellus - Slot 515495

Main Wellbore

Design: 515495 As Drilled

Standard Survey Report

22 August, 2017

RECEIVED
Office of Oil and Gas

DEC 18 2017

WV Department of
Environmental Protection



Scientific Drilling

www.scientificdrilling.com

03/02/2018

Company:	EQT PRODUCTION	Local Co-ordinate Reference:	Well #515495 - Marcellus - Slot 515495
Project:	Marion County, WV	TVD Reference:	GL 1424' & 16' KB @ 1440.0usft (Sav 654)
Site:	GLO76 Pad	MD Reference:	GL 1424' & 16' KB @ 1440.0usft (Sav 654)
Well:	#515495 - Marcellus	North Reference:	Grid
Wellbore:	Main Wellbore	Survey Calculation Method:	Minimum Curvature
Design:	515495 As Drilled	Database:	Northeast District

Project	Marion County, WV		
Map System:	US State Plane 1927 (Exact solution)	System Datum:	Mean Sea Level
Geo Datum:	NAD 1927 (NADCON CONUS)		
Map Zone:	West Virginia North 4701		

Site	GLO76 Pad				
Site Position:		Northing:	389,060.60 usft	Latitude:	39° 33' 50.328 N
From:	Map	Easting:	1,721,015.30 usft	Longitude:	80° 29' 22.494 W
Position Uncertainty:	0.0 usft	Slot Radius:	13-3/16 "	Grid Convergence:	-0.63 °

Well	#515495 - Marcellus - Slot 515495, Verified by Pottmeyer on 7/6/2017					
Well Position	+N-S	0.0 usft	Northing:	389,066.60 usft	Latitude:	39° 33' 50.384 N
	+E-W	0.0 usft	Easting:	1,720,985.90 usft	Longitude:	80° 29' 22.870 W
Position Uncertainty		0.0 usft	Wellhead Elevation:	usft	Ground Level:	1,424.0 usft

Wellbore	Main Wellbore				
Magnetics	Model Name	Sample Date	Declination (°)	Dip Angle (°)	Field Strength (nT)
	HDGM	8/2/2017	-8.65	66.88	52,340

Design	515495 As Drilled				
Audit Notes:					
Version:	1.0	Phase:	ACTUAL	Tie On Depth:	0.0
Vertical Section:	Depth From (TVD) (usft)	+N/-S (usft)	+E/-W (usft)	Direction (°)	
	0.0	0.0	0.0		

RECEIVED
Office of Oil and Gas

DEC 18 2017

Survey Program	Date	8/21/2017			
From (usft)	To (usft)	Survey (Wellbore)	Tool Name	Description	
103.0	6,183.0	Gyrodata Gyro (Main Wellbore)	GYD_DP_MS	Gyrodata gyro-compassing and drop	
6,218.0	12,027.0	Survey #2 SDI MWD (Main Wellbore)	SDI MWD	SDI MWD - Standard ver 1.0.1	

WV Department of Environmental Protection

Measured Depth (usft)	Inclination (°)	Azimuth (°)	Vertical Depth (usft)	+N/-S (usft)	+E/-W (usft)	Vertical Section (usft)	Dogleg Rate (°/100usft)	Build Rate (°/100usft)	Turn Rate (°/100usft)
0.0	0.00	0.00	0.0	0.0	0.0	0.0	0.00	0.00	0.00
103.0	0.22	302.03	103.0	0.1	-0.2	0.2	0.21	0.21	0.00
203.0	0.20	294.71	203.0	0.3	-0.5	0.4	0.03	-0.02	-7.32
303.0	0.25	302.30	303.0	0.5	-0.8	0.7	0.06	0.05	7.59
403.0	0.20	302.01	403.0	0.7	-1.2	1.0	0.05	-0.05	-0.29
503.0	0.11	330.70	503.0	0.9	-1.4	1.3	0.12	-0.09	28.69
603.0	0.09	333.14	603.0	1.0	-1.4	1.4	0.02	-0.02	2.44
703.0	0.23	316.15	703.0	1.2	-1.6	1.7	0.15	0.14	-16.99
803.0	0.30	314.80	803.0	1.6	-1.9	2.1	0.07	0.07	-1.35
903.0	0.47	306.87	903.0	2.0	-2.5	2.7	0.18	0.17	-7.93

Company:	EQT PRODUCTION	Local Co-ordinate Reference:	Well #515495 - Marcellus - Slot 515495
Project:	Marion County, WV	TVD Reference:	GL 1424' & 16' KB @ 1440.0usft (Sav 654)
Site:	GLO76 Pad	MD Reference:	GL 1424' & 16' KB @ 1440.0usft (Sav 654)
Well:	#515495 - Marcellus	North Reference:	Grid
Wellbore:	Main Wellbore	Survey Calculation Method:	Minimum Curvature
Design:	515495 As Drilled	Database:	Northeast District

RECEIVED
Office of Oil and Gas
DEC 18 2017

Survey WV Department of Environmental Protection

Measured Depth (usft)	Inclination (°)	Azimuth (°)	Vertical Depth (usft)	+N/-S (usft)	+E/-W (usft)	Vertical Section (usft)	Dogleg Rate (°/100usft)	Build Rate (°/100usft)	Turn Rate (°/100usft)
1,003.0	0.75	305.77	1,003.0	2.6	-3.3	3.6	0.28	0.28	-1.10
1,103.0	0.85	306.71	1,103.0	3.4	-4.4	4.7	0.10	0.10	0.94
1,203.0	0.95	307.04	1,203.0	4.4	-5.7	6.0	0.10	0.10	0.33
1,303.0	1.15	309.94	1,302.9	5.5	-7.1	7.6	0.21	0.20	2.90
1,403.0	1.57	315.76	1,402.9	7.1	-8.9	9.7	0.44	0.42	5.82
1,503.0	1.82	317.34	1,502.9	9.3	-10.9	12.4	0.25	0.25	1.58
1,603.0	1.89	320.58	1,602.8	11.7	-13.0	15.4	0.13	0.07	3.24
1,703.0	1.94	322.80	1,702.8	14.4	-15.1	18.6	0.09	0.05	2.22
1,803.0	1.52	324.95	1,802.7	16.8	-16.9	21.5	0.42	-0.42	2.15
1,903.0	1.71	166.67	1,902.7	16.4	-17.3	21.3	3.17	0.19	-158.28
2,003.0	6.35	159.48	2,002.4	9.8	-15.0	14.3	4.66	4.64	-7.19
2,103.0	7.82	162.24	2,101.7	-1.9	-11.0	1.9	1.51	1.47	2.76
2,203.0	8.11	162.48	2,200.7	-15.1	-6.8	-11.9	0.29	0.29	0.24
2,303.0	8.22	163.74	2,299.7	-28.7	-2.7	-26.1	0.21	0.11	1.26
2,403.0	9.13	165.77	2,398.5	-43.2	1.3	-41.1	0.96	0.91	2.03
2,503.0	10.10	165.97	2,497.1	-59.4	5.4	-57.8	0.97	0.97	0.20
2,603.0	7.92	170.25	2,595.9	-74.7	8.7	-73.3	2.28	-2.18	4.28
2,703.0	3.33	174.75	2,695.4	-84.4	10.1	-82.9	4.61	-4.59	4.50
2,803.0	0.84	170.83	2,795.3	-88.0	10.5	-86.4	2.49	-2.49	-3.92
2,903.0	0.25	140.56	2,895.3	-88.9	10.7	-87.3	0.64	-0.59	-30.27
3,003.0	0.49	57.73	2,995.3	-88.8	11.2	-87.5	0.52	0.24	-82.83
3,103.0	0.51	56.52	3,095.3	-88.4	12.0	-87.3	0.02	0.02	-1.21
3,203.0	0.40	11.61	3,195.3	-87.8	12.4	-86.9	0.36	-0.11	-44.91
3,303.0	0.44	5.45	3,295.3	-87.1	12.5	-86.2	0.06	0.04	-6.16
3,403.0	0.44	346.42	3,395.3	-86.3	12.5	-85.5	0.15	0.00	-19.03
3,503.0	0.91	308.13	3,495.3	-85.4	11.7	-84.4	0.63	0.47	-38.29
3,603.0	1.15	303.31	3,595.3	-84.4	10.3	-83.0	0.25	0.24	-4.82
3,703.0	1.16	304.05	3,695.3	-83.3	8.6	-81.3	0.02	0.01	0.74
3,803.0	0.94	296.60	3,795.2	-82.3	7.0	-79.9	0.26	-0.22	-7.45
3,903.0	0.82	296.44	3,895.2	-81.7	5.7	-78.8	0.12	-0.12	-0.16
4,003.0	0.85	293.30	3,995.2	-81.0	4.3	-77.8	0.05	0.03	-3.14
4,103.0	0.89	293.17	4,095.2	-80.4	2.9	-76.8	0.04	0.04	-0.13
4,203.0	0.93	294.74	4,195.2	-79.8	1.5	-75.7	0.05	0.04	1.57
4,303.0	0.98	292.17	4,295.2	-79.1	0.0	-74.5	0.07	0.05	-2.57
4,403.0	1.01	292.11	4,395.2	-78.5	-1.6	-73.4	0.03	0.03	-0.06
4,503.0	1.02	298.69	4,495.1	-77.7	-3.2	-72.1	0.12	0.01	6.58
4,603.0	1.01	300.60	4,595.1	-76.9	-4.8	-70.8	0.04	-0.01	1.91
4,703.0	0.74	322.37	4,695.1	-75.9	-5.9	-69.5	0.42	-0.27	21.77
4,803.0	0.51	32.34	4,795.1	-75.0	-6.1	-68.6	0.74	-0.23	69.97
4,903.0	0.58	66.22	4,895.1	-74.4	-5.4	-68.3	0.32	0.07	33.88
5,003.0	0.67	52.85	4,995.1	-73.9	-4.5	-68.1	0.17	0.09	-13.37
5,103.0	0.60	72.87	5,095.1	-73.4	-3.5	-67.9	0.23	-0.07	20.02
5,203.0	0.53	84.12	5,195.1	-73.2	-2.5	-68.1	0.13	-0.07	11.25

Company: EQT PRODUCTION
Project: Marion County, WV
Site: GLO76 Pad
Well: #515495 - Marcellus
Wellbore: Main Wellbore
Design: 515495 As Drilled

Local Co-ordinate Reference: Well #515495 - Marcellus - Slot 515495
TVD Reference: GL 1424' & 16' KB @ 1440.0usft (Sav 654)
MD Reference: GL 1424' & 16' KB @ 1440.0usft (Sav 654)
North Reference: Grid
Survey Calculation Method: Minimum Curvature
Database: Northeast District

RECEIVED
Office of Oil and Gas

DEC 18 2017

WV Department of
Environmental Protection

Measured Depth (usft)	Inclination (°)	Azimuth (°)	Vertical Depth (usft)	+N/-S (usft)	+E/-W (usft)	Vertical Section (usft)	Dogleg Rate (°/100usft)	Build Rate (°/100usft)	Turn Rate (°/100usft)	
5,303.0	0.54	103.85	5,295.1	-73.2	-1.6	-68.4	0.18	0.01	19.73	
5,403.0	0.53	118.49	5,395.1	-73.6	-0.8	-69.0	0.14	-0.01	14.64	
5,503.0	0.35	129.90	5,495.1	-74.0	-0.1	-69.6	0.20	-0.18	11.41	
5,603.0	0.11	340.17	5,595.1	-74.1	0.1	-69.8	0.45	-0.24	-149.73	
5,703.0	0.27	354.95	5,695.1	-73.8	0.0	-69.5	0.17	0.16	14.78	
5,803.0	0.33	351.93	5,795.1	-73.2	0.0	-69.0	0.06	0.06	-3.02	
5,903.0	0.13	56.10	5,895.1	-72.9	0.0	-68.7	0.30	-0.20	64.17	
6,003.0	0.23	94.81	5,995.1	-72.8	0.3	-68.7	0.15	0.10	38.71	
6,103.0	0.38	134.39	6,095.1	-73.1	0.8	-69.1	0.25	0.15	39.58	
6,183.0	0.52	143.77	6,175.1	-73.6	1.2	-69.7	0.20	0.18	11.73	
6,218.0	0.50	150.25	6,210.1	-73.8	1.3	-70.0	0.17	-0.06	18.52	
6,281.0	0.44	153.48	6,273.1	-74.3	1.6	-70.5	0.10	-0.10	5.13	
6,313.0	1.64	162.68	6,305.1	-74.8	1.8	-71.1	3.77	3.75	28.74	
KOP as Drilled: 6313 MD- 6305.1 TVD										
6,344.0	4.41	165.54	6,336.0	-76.4	2.2	-72.7	8.95	8.94	9.23	
6,376.0	7.51	164.11	6,367.8	-79.6	3.1	-76.0	9.70	9.69	-4.47	
6,407.0	10.83	160.71	6,398.4	-84.3	4.6	-81.0	10.85	10.71	-10.97	
6,439.0	14.39	154.86	6,429.7	-90.7	7.3	-87.9	11.81	11.13	-18.28	
6,471.0	17.62	149.43	6,460.4	-98.5	11.4	-96.6	11.11	10.09	-16.97	
6,502.0	19.61	146.82	6,489.8	-106.9	16.7	-106.3	6.96	6.42	-8.42	
6,534.0	20.63	146.70	6,519.8	-116.1	22.7	-117.0	3.19	3.19	-0.38	
6,566.0	23.21	147.25	6,549.5	-126.1	29.2	-128.6	8.09	8.06	1.72	
6,597.0	26.59	146.28	6,577.6	-137.1	36.4	-141.3	10.98	10.90	-3.13	
6,629.0	30.48	144.80	6,605.7	-149.6	45.0	-156.1	12.35	12.16	-4.63	
6,660.0	33.82	142.12	6,632.0	-162.9	54.9	-171.8	11.71	10.77	-8.65	
6,692.0	35.83	140.39	6,658.3	-177.1	66.3	-189.1	7.00	6.28	-5.41	
6,724.0	38.09	141.16	6,683.8	-192.0	78.5	-207.2	7.21	7.06	2.41	
6,756.0	40.07	142.06	6,708.7	-207.8	91.0	-226.3	6.44	6.19	2.81	
6,787.0	38.99	141.91	6,732.6	-223.4	103.1	-245.0	3.50	-3.48	-0.48	
6,819.0	35.34	140.90	6,758.1	-238.5	115.2	-263.3	11.56	-11.41	-3.16	
6,851.0	31.58	137.28	6,784.8	-251.8	126.7	-279.8	13.30	-11.75	-11.31	
6,883.0	29.17	133.57	6,812.4	-263.4	138.0	-294.4	9.54	-7.53	-11.59	
6,915.0	27.67	131.26	6,840.5	-273.7	149.3	-307.9	5.81	-4.69	-7.22	
6,946.0	25.63	127.20	6,868.2	-282.5	160.0	-319.8	8.82	-6.58	-13.10	
6,977.0	25.04	123.46	6,896.2	-290.1	170.9	-330.6	5.50	-1.90	-12.06	
7,009.0	23.31	116.48	6,925.4	-296.7	182.2	-340.6	10.43	-5.41	-21.81	
7,041.0	21.37	106.52	6,955.0	-301.2	193.4	-348.6	13.27	-6.06	-31.13	
7,072.0	19.98	97.44	6,984.1	-303.5	204.1	-354.4	11.26	-4.48	-29.29	
7,104.0	17.76	88.79	7,014.3	-304.1	214.4	-358.4	11.14	-6.94	-27.03	
7,136.0	16.08	78.67	7,045.0	-303.1	223.6	-360.6	10.58	-5.25	-31.63	
7,168.0	16.33	68.33	7,075.7	-300.6	232.2	-361.0	9.04	0.78	-32.31	
7,199.0	17.07	62.16	7,105.4	-296.8	240.2	-360.2	6.19	2.39	-19.90	
7,231.0	18.62	54.18	7,135.9	-291.6	248.5	-358.1	9.04	4.84	-24.94	

Company:	EQT PRODUCTION	Local Co-ordinate Reference:	Well #515495 - Marcellus - Slot 515495
Project:	Marion County, WV	TVD Reference:	GL 1424' & 16' KB @ 1440.0usft (Sav 654)
Site:	GLO76 Pad	MD Reference:	GL 1424' & 16' KB @ 1440.0usft (Sav 654)
Well:	#515495 - Marcellus	North Reference:	Grid
Wellbore:	Main Wellbore	Survey Calculation Method:	Minimum Curvature
Design:	515495 As Drilled	Database:	Northeast District

RECEIVED
Office of Oil and Gas
DEC 18 2017
WV Department of
Environmental Protection

Survey

Measured Depth (usft)	Inclination (°)	Azimuth (°)	Vertical Depth (usft)	+N/-S (usft)	+E/-W (usft)	Vertical Section (usft)	Dogleg Rate (°/100usft)	Build Rate (°/100usft)	Turn Rate (°/100usft)
7,262.0	20.09	44.97	7,165.1	-285.0	256.3	-354.5	10.91	4.74	-29.71
7,294.0	21.15	36.96	7,195.1	-276.5	263.7	-348.9	9.41	3.31	-25.03
7,326.0	21.39	29.69	7,224.9	-266.8	270.0	-341.9	8.27	0.75	-22.72
7,357.0	21.73	22.40	7,253.7	-256.6	275.0	-334.0	8.71	1.10	-23.52
7,389.0	23.59	15.39	7,283.3	-244.9	279.0	-324.3	10.24	5.81	-21.91
7,420.0	25.59	10.18	7,311.5	-232.3	281.8	-313.4	9.51	6.45	-16.81
7,452.0	27.83	6.34	7,340.0	-218.1	283.9	-300.7	8.83	7.00	-12.00
7,484.0	29.78	3.47	7,368.1	-202.8	285.2	-286.7	7.47	6.09	-8.97
7,516.0	31.65	359.37	7,395.6	-186.4	285.5	-271.4	8.77	5.84	-12.81
7,547.0	33.02	355.80	7,421.8	-169.9	284.8	-255.6	7.58	4.42	-11.52
7,578.0	34.65	352.51	7,447.5	-152.7	283.1	-238.8	7.91	5.26	-10.61
7,610.0	37.29	350.17	7,473.4	-134.1	280.2	-220.4	9.30	8.25	-7.31
7,641.0	40.48	348.91	7,497.6	-115.0	276.7	-201.2	10.60	10.29	-4.06
7,673.0	44.42	348.84	7,521.2	-93.8	272.5	-179.8	12.31	12.31	-0.22
7,705.0	48.18	349.13	7,543.3	-71.1	268.1	-157.0	11.77	11.75	0.91
7,736.0	51.09	348.24	7,563.3	-47.9	263.5	-133.6	9.64	9.39	-2.87
7,768.0	54.47	347.03	7,582.7	-23.1	258.0	-108.3	10.98	10.56	-3.78
7,799.0	57.73	345.86	7,600.0	1.9	252.0	-82.7	10.97	10.52	-3.77
7,831.0	59.67	344.17	7,616.6	28.4	244.9	-55.5	7.56	6.06	-5.28
7,863.0	60.81	342.67	7,632.5	55.0	237.0	-27.7	5.41	3.56	-4.69
7,894.0	63.39	340.97	7,647.0	81.0	228.4	-0.4	9.63	8.32	-5.48
7,926.0	66.25	339.59	7,660.6	108.3	218.6	28.6	9.75	8.94	-4.31
7,958.0	69.39	339.66	7,672.7	136.0	208.3	58.2	9.81	9.81	0.22
7,989.0	73.52	339.45	7,682.6	163.6	198.1	87.6	13.34	13.32	-0.68
8,021.0	76.11	339.58	7,690.9	192.5	187.3	118.5	8.10	8.09	0.41
8,052.0	78.43	338.53	7,697.8	220.7	176.5	148.7	8.18	7.48	-3.39
8,084.0	80.72	338.35	7,703.6	250.0	164.9	180.2	7.18	7.16	-0.56
8,115.0	82.69	338.50	7,708.0	278.5	153.6	210.8	6.37	6.35	0.48
8,147.0	84.21	337.07	7,711.7	307.9	141.6	242.6	6.50	4.75	-4.47
8,179.0	86.65	336.06	7,714.2	337.2	128.9	274.4	8.25	7.63	-3.16
8,211.0	89.26	335.57	7,715.4	366.4	115.8	306.3	8.29	8.15	-1.53
LP as Drilled: 8211 MD- 7715.4 TVD									
8,242.0	90.27	335.33	7,715.5	394.6	102.9	337.2	3.35	3.26	-0.77
8,306.0	90.74	333.93	7,714.9	452.4	75.5	400.8	2.31	0.73	-2.19
8,369.0	91.34	333.84	7,713.8	509.0	47.8	463.4	0.96	0.95	-0.14
8,433.0	91.95	334.71	7,712.0	566.6	20.0	527.0	1.66	0.95	1.36
8,496.0	91.34	335.97	7,710.1	623.8	-6.3	589.8	2.22	-0.97	2.00
8,559.0	91.55	334.75	7,708.6	681.1	-32.5	652.5	1.96	0.33	-1.94
8,623.0	90.40	336.13	7,707.5	739.3	-59.1	716.2	2.81	-1.80	2.16
8,686.0	89.93	338.01	7,707.3	797.3	-83.7	779.1	3.08	-0.75	2.98
8,749.0	90.27	338.04	7,707.2	855.7	-107.2	842.1	0.54	0.54	0.05
8,812.0	90.61	337.99	7,706.7	914.1	-130.8	905.0	0.55	0.54	-0.08
8,875.0	91.07	337.63	7,705.8	972.5	-154.6	967.9	0.93	0.73	-0.57
8,939.0	90.74	338.13	7,704.8	1,031.7	-178.7	1,031.9	0.94	-0.52	0.78

Company:	EQT PRODUCTION	Local Co-ordinate Reference:	Well #515495 - Marcellus - Slot 515495
Project:	Marion County, WV	TVD Reference:	GL 1424' & 16' KB @ 1440.0usft (Sav 654)
Site:	GLO76 Pad	MD Reference:	GL 1424' & 16' KB @ 1440.0usft (Sav 654)
Well:	#515495 - Marcellus	North Reference:	Grid
Wellbore:	Main Wellbore	Survey Calculation Method:	Minimum Curvature
Design:	515495 As Drilled	Database:	Northeast District

RECEIVED
Office of Oil and Gas

DEC 18 2017

Survey

WV Department of
Environmental Protection

Measured Depth (usft)	Inclination (°)	Azimuth (°)	Vertical Depth (usft)	+N/-S (usft)	+E/-W (usft)	Vertical Section (usft)	Dogleg Rate (°/100usft)	Build Rate (°/100usft)	Turn Rate (°/100usft)
9,002.0	91.61	337.03	7,703.5	1,090.0	-202.7	1,094.8	2.23	1.38	-1.75
9,065.0	90.84	333.83	7,702.1	1,147.2	-228.9	1,157.5	5.22	-1.22	-5.08
9,129.0	90.91	336.57	7,701.1	1,205.3	-255.8	1,221.3	4.28	0.11	4.28
9,192.0	92.45	340.54	7,699.3	1,263.9	-278.8	1,284.2	6.76	2.44	6.30
9,255.0	92.28	338.75	7,696.7	1,322.9	-300.7	1,347.1	2.85	-0.27	-2.84
9,318.0	90.87	338.33	7,695.0	1,381.5	-323.7	1,410.1	2.34	-2.24	-0.67
9,381.0	89.73	339.53	7,694.6	1,440.3	-346.4	1,473.0	2.63	-1.81	1.90
9,445.0	91.78	340.88	7,693.8	1,500.5	-368.0	1,537.0	3.84	3.20	2.11
9,508.0	92.02	340.96	7,691.7	1,560.0	-388.6	1,600.0	0.40	0.38	0.13
9,572.0	88.86	339.72	7,691.2	1,620.3	-410.1	1,664.0	5.30	-4.94	-1.94
9,635.0	87.31	338.64	7,693.3	1,679.1	-432.5	1,726.9	3.00	-2.46	-1.71
9,699.0	88.25	338.51	7,695.8	1,738.7	-455.9	1,790.8	1.48	1.47	-0.20
9,762.0	88.25	337.96	7,697.7	1,797.2	-479.2	1,853.8	0.87	0.00	-0.87
9,826.0	85.90	337.62	7,701.0	1,856.3	-503.4	1,917.6	3.71	-3.67	-0.53
9,889.0	84.35	336.20	7,706.3	1,914.1	-528.0	1,980.3	3.33	-2.46	-2.25
9,952.0	89.90	335.07	7,709.5	1,971.4	-553.9	2,042.9	8.99	8.81	-1.79
10,015.0	92.18	335.23	7,708.4	2,028.5	-580.4	2,105.7	3.63	3.62	0.25
10,079.0	92.35	335.08	7,705.8	2,086.5	-607.3	2,169.3	0.35	0.27	-0.23
10,135.0	92.62	334.39	7,703.4	2,137.1	-631.2	2,225.0	1.32	0.48	-1.23
10,206.0	94.60	334.16	7,698.9	2,201.0	-661.9	2,295.5	2.81	2.79	-0.32
10,269.0	95.21	334.05	7,693.5	2,257.4	-689.3	2,357.9	0.98	0.97	-0.17
10,331.0	92.75	334.54	7,689.2	2,313.2	-716.2	2,419.4	4.05	-3.97	0.79
10,394.0	92.05	334.99	7,686.6	2,370.1	-743.0	2,482.0	1.32	-1.11	0.71
10,457.0	92.18	334.97	7,684.3	2,427.2	-769.6	2,544.7	0.21	0.21	-0.03
10,520.0	90.00	335.12	7,683.1	2,484.3	-796.2	2,607.4	3.47	-3.46	0.24
10,582.0	88.09	335.70	7,684.1	2,540.6	-822.0	2,669.1	3.22	-3.08	0.94
10,645.0	87.35	337.17	7,686.6	2,598.3	-847.2	2,731.9	2.61	-1.17	2.33
10,708.0	85.97	338.27	7,690.3	2,656.5	-871.0	2,794.8	2.80	-2.19	1.75
10,771.0	85.16	338.13	7,695.2	2,714.8	-894.3	2,857.5	1.30	-1.29	-0.22
10,835.0	84.99	336.64	7,700.6	2,773.7	-918.8	2,921.2	2.33	-0.27	-2.33
10,898.0	82.54	335.40	7,707.5	2,830.9	-944.3	2,983.6	4.35	-3.89	-1.97
10,961.0	79.95	334.81	7,717.1	2,887.4	-970.5	3,045.6	4.21	-4.11	-0.94
11,025.0	79.64	335.12	7,728.4	2,944.5	-997.2	3,108.3	0.68	-0.48	0.48
11,088.0	77.53	335.50	7,740.9	3,000.6	-1,022.9	3,169.8	3.40	-3.35	0.60
11,151.0	76.66	336.39	7,755.0	3,056.6	-1,048.0	3,231.1	1.95	-1.38	1.41
11,214.0	76.84	336.83	7,769.4	3,112.9	-1,072.3	3,292.3	0.74	0.29	0.70
11,278.0	77.35	336.91	7,783.7	3,170.3	-1,096.8	3,354.5	0.81	0.80	0.13
11,339.0	78.08	337.52	7,796.7	3,225.2	-1,119.9	3,414.0	1.54	1.20	1.00
11,402.0	79.85	338.26	7,808.7	3,282.5	-1,143.2	3,475.8	3.04	2.81	1.17
11,465.0	80.22	338.31	7,819.6	3,340.2	-1,166.1	3,537.8	0.59	0.59	0.08
11,529.0	80.54	338.61	7,830.3	3,398.9	-1,189.3	3,600.9	0.68	0.50	0.47
11,592.0	82.09	338.88	7,839.8	3,456.9	-1,211.9	3,663.1	2.50	2.46	0.43
11,655.0	87.82	338.63	7,845.4	3,515.4	-1,234.6	3,725.8	9.10	9.10	-0.40