



# Actual Wellpath Report

Elliott 1H (L-004588) AWP Proj: 19295'

Page 1 of 11



## REFERENCE WELLPATH IDENTIFICATION

Operator	EQT PRODUCTION COMPANY	Well	Elliott 1H (L-004588)
Field	Marion	API	47-049-02499-00-00
Facility	Elliot Pad	Wellbore	Elliott 1H (L-004588) AWB
Slot	Slot 01		

## REPORT SETUP INFORMATION

Projection System	NAD27 / Lambert West Virginia SP, Northern Zone (4701), US feet	Software System	WellArchitect® 6.0
North Reference	Grid	User	Hilpthop
Scale	0.999942	Report Generated	8/16/2021 at 9:13:02 AM
Convergence at slot	0.56° West	Database	WA_MPL_EASTERNUS_Defn

## WELLPATH LOCATION

	Local coordinates		Grid coordinates		Geographic coordinates	
	North[ft]	East[ft]	Easting[US ft]	Northing[US ft]	Latitude	Longitude
Slot Location	0.00	0.00	1751172.23	381907.55	39°32'42.7371"N	80°22'56.5342"W
Facility Reference Pt			1751172.23	381907.55	39°32'42.7371"N	80°22'56.5342"W
Field Reference Pt			1931053.01	433518.91	39°41'24.0000"N	79°44'42.0000"W

## WELLPATH DATUM

Calculation method	Minimum curvature	Patterson 292 (RKB) to Facility Vertical Datum	1370.00ft
Horizontal Reference Pt	Slot	Patterson 292 (RKB) to Mean Sea Level	1370.00ft
Vertical Reference Pt	Patterson 292 (RKB)	Patterson 292 (RKB) to Ground Level at Slot (Slot 01)	28.00ft
MD Reference Pt	Patterson 292 (RKB)	Section Origin	N 0.00, E 0.00 ft
Field Vertical Reference	Mean Sea Level	Section Azimuth	307.72°



# Actual Wellpath Report

Elliott 1H (L-004588) AWP Proj: 19295'  
Page 2 of 11



REFERENCE WELLPATH IDENTIFICATION			
Operator	EQT PRODUCTION COMPANY	Well	Elliott 1H (L-004588)
Field	Marion	API	47-049-02499-00-00
Facility	Elliot Pad	Wellbore	Elliott 1H (L-004588) AWB
Slot	Slot 01		

## WELLPATH DATA (228 stations) † = interpolated, ‡ = extrapolated station

MD [ft]	Inclination [°]	Azimuth [°]	TVD [ft]	Vert Sect [ft]	North [ft]	East [ft]	Grid East [US ft]	Grid North [US ft]	Latitude	Longitude	Closure Dist [ft]	Closure Dir [°]	DLS [°/100ft]	Build Rate [°/100ft]	Turn Rate [°/100ft]
0.00†	0.000	261.650	0.00	0.00	0.00	0.00	1751172.23	381907.55	39°32'42.7371"N	80°22'56.5342"W	0.00	0.000	0.00	0.00	0.00
28.00	0.000	261.650	28.00	0.00	0.00	0.00	1751172.23	381907.55	39°32'42.7371"N	80°22'56.5342"W	0.00	0.000	0.00	0.00	0.00
115.00	0.060	261.650	115.00	0.03	-0.01	-0.05	1751172.18	381907.54	39°32'42.7370"N	80°22'56.5347"W	0.05	261.650	0.07	0.07	0.00
165.00	0.110	264.990	165.00	0.09	-0.01	-0.12	1751172.11	381907.54	39°32'42.7369"N	80°22'56.5357"W	0.12	262.989	0.10	0.10	6.68
215.00	0.070	279.950	215.00	0.15	-0.01	-0.20	1751172.03	381907.54	39°32'42.7369"N	80°22'56.5367"W	0.20	266.067	0.09	-0.08	29.92
265.00	0.120	219.800	265.00	0.18	-0.05	-0.26	1751171.97	381907.50	39°32'42.7366"N	80°22'56.5375"W	0.26	259.451	0.21	0.10	-120.30
315.00	0.160	238.570	315.00	0.20	-0.13	-0.35	1751171.88	381907.42	39°32'42.7358"N	80°22'56.5386"W	0.37	250.504	0.12	0.08	37.54
365.00	0.120	266.570	365.00	0.27	-0.16	-0.47	1751171.76	381907.39	39°32'42.7354"N	80°22'56.5401"W	0.49	250.511	0.16	-0.08	56.00
415.00	0.100	272.720	415.00	0.34	-0.17	-0.56	1751171.67	381907.38	39°32'42.7354"N	80°22'56.5413"W	0.59	253.546	0.05	-0.04	12.30
465.00	0.120	265.880	465.00	0.42	-0.17	-0.66	1751171.57	381907.38	39°32'42.7354"N	80°22'56.5425"W	0.68	255.703	0.05	0.04	-13.68
515.00	0.170	240.650	515.00	0.49	-0.21	-0.77	1751171.46	381907.34	39°32'42.7350"N	80°22'56.5440"W	0.80	254.987	0.16	0.10	-50.46
565.00	0.110	223.500	565.00	0.52	-0.28	-0.87	1751171.36	381907.27	39°32'42.7342"N	80°22'56.5452"W	0.91	252.266	0.15	-0.12	-34.30
615.00	0.250	232.040	615.00	0.55	-0.38	-0.99	1751171.24	381907.17	39°32'42.7332"N	80°22'56.5467"W	1.06	248.980	0.28	0.28	17.08
665.00	0.110	263.830	665.00	0.61	-0.45	-1.12	1751171.11	381907.10	39°32'42.7325"N	80°22'56.5484"W	1.21	248.059	0.33	-0.28	63.58
715.00	0.100	263.370	715.00	0.68	-0.46	-1.22	1751171.01	381907.09	39°32'42.7324"N	80°22'56.5496"W	1.30	249.142	0.02	-0.02	-0.92
765.00	0.040	223.750	765.00	0.71	-0.48	-1.27	1751170.96	381907.07	39°32'42.7322"N	80°22'56.5503"W	1.36	249.278	0.15	-0.12	-79.24
815.00	0.180	288.560	815.00	0.79	-0.47	-1.36	1751170.87	381907.08	39°32'42.7323"N	80°22'56.5514"W	1.44	250.963	0.33	0.28	129.62
865.00	0.160	295.990	865.00	0.93	-0.41	-1.49	1751170.74	381907.14	39°32'42.7329"N	80°22'56.5532"W	1.55	254.561	0.06	-0.04	14.86
890.00	0.210	288.290	890.00	1.01	-0.38	-1.57	1751170.66	381907.17	39°32'42.7332"N	80°22'56.5541"W	1.62	256.283	0.22	0.20	-30.80
1049.00	0.070	33.900	1049.00	1.29	-0.21	-1.79	1751170.44	381907.34	39°32'42.7348"N	80°22'56.5570"W	1.80	263.284	0.15	-0.09	66.42
1092.00	0.030	254.140	1092.00	1.30	-0.19	-1.79	1751170.44	381907.36	39°32'42.7350"N	80°22'56.5569"W	1.80	263.863	0.22	-0.09	-325.02
1135.00	0.290	222.640	1135.00	1.31	-0.28	-1.87	1751170.36	381907.27	39°32'42.7342"N	80°22'56.5580"W	1.89	261.634	0.62	0.60	-73.26
1221.00	1.230	226.030	1220.99	1.46	-1.08	-2.68	1751169.55	381906.47	39°32'42.7262"N	80°22'56.5683"W	2.89	248.150	1.09	1.09	3.94
1307.00	2.450	237.160	1306.94	2.21	-2.71	-4.89	1751167.34	381904.84	39°32'42.7098"N	80°22'56.5963"W	5.60	240.984	1.47	1.42	12.94
1350.00	3.190	236.500	1349.89	2.90	-3.87	-6.66	1751165.57	381903.68	39°32'42.6982"N	80°22'56.6187"W	7.71	239.833	1.72	1.72	-1.53
1393.00	3.690	238.530	1392.81	3.78	-5.26	-8.84	1751163.39	381902.29	39°32'42.6843"N	80°22'56.6463"W	10.28	239.270	1.20	1.16	4.72
1436.00	4.330	237.040	1435.71	4.81	-6.86	-11.38	1751160.85	381900.69	39°32'42.6682"N	80°22'56.6786"W	13.29	238.921	1.51	1.49	-3.47
1479.00	5.060	235.200	1478.56	5.91	-8.83	-14.30	1751157.93	381898.72	39°32'42.6485"N	80°22'56.7156"W	16.81	238.319	1.73	1.70	-4.28
1522.00	5.560	233.680	1521.38	7.06	-11.14	-17.54	1751154.69	381896.41	39°32'42.6253"N	80°22'56.7566"W	20.78	237.570	1.21	1.16	-3.53
1565.00	6.340	233.120	1564.15	8.26	-13.80	-21.12	1751151.12	381893.75	39°32'42.5986"N	80°22'56.8019"W	25.23	236.831	1.82	1.81	-1.30



# Actual Wellpath Report

Elliott 1H (L-004588) AWP Proj: 19295'  
Page 3 of 11



REFERENCE WELLPATH IDENTIFICATION			
Operator	EQT PRODUCTION COMPANY	Well	Elliott 1H (L-004588)
Field	Marion	API	47-049-02499-00-00
Facility	Elliot Pad	Wellbore	Elliott 1H (L-004588) AWB
Slot	Slot 01		

WELLPATH DATA (228 stations)																
MD [ft]	Inclination [°]	Azimuth [°]	TVD [ft]	Vert Sect [ft]	North [ft]	East [ft]	Grid East [US ft]	Grid North [US ft]	Latitude	Longitude	Closure Dist [ft]	Closure Dir [°]	DLS [°/100ft]	Build Rate [°/100ft]	Turn Rate [°/100ft]	
1608.00	7.260	233.830	1606.84	9.64	-16.83	-25.21	1751147.02	381890.72	39°32'42.5683"N	80°22'56.8538"W	30.31	236.271	2.15	2.14	1.65	
1651.00	8.540	234.880	1649.43	11.34	-20.27	-30.01	1751142.22	381887.28	39°32'42.5338"N	80°22'56.9147"W	36.22	235.966	3.00	2.98	2.44	
1694.00	9.780	234.700	1691.89	13.35	-24.22	-35.61	1751136.63	381883.33	39°32'42.4943"N	80°22'56.9856"W	43.06	235.778	2.88	2.88	-0.42	
1737.00	10.570	236.100	1734.21	15.66	-28.53	-41.86	1751130.37	381879.02	39°32'42.4511"N	80°22'57.0649"W	50.66	235.725	1.93	1.84	3.26	
1781.00	11.070	236.930	1777.43	18.32	-33.08	-48.75	1751123.48	381874.47	39°32'42.4054"N	80°22'57.1523"W	58.92	235.837	1.19	1.14	1.89	
1867.00	11.530	235.540	1861.76	23.67	-42.45	-62.75	1751109.48	381865.10	39°32'42.3115"N	80°22'57.3299"W	75.76	235.923	0.62	0.53	-1.62	
1953.00	11.390	231.920	1946.05	28.38	-52.55	-76.53	1751095.71	381855.00	39°32'42.2103"N	80°22'57.5044"W	92.83	235.521	0.85	-0.16	-4.21	
2040.00	11.320	229.960	2031.34	32.30	-63.34	-89.83	1751082.41	381844.21	39°32'42.1023"N	80°22'57.6728"W	109.91	234.809	0.45	-0.08	-2.25	
2126.00	10.850	231.890	2115.74	36.07	-73.77	-102.66	1751069.58	381833.78	39°32'41.9981"N	80°22'57.8352"W	126.41	234.299	0.70	-0.55	2.24	
2212.00	10.430	230.490	2200.26	39.77	-83.72	-115.03	1751057.21	381823.84	39°32'41.8986"N	80°22'57.9919"W	142.27	233.953	0.57	-0.49	-1.63	
2299.00	10.400	227.050	2285.83	42.79	-94.08	-126.85	1751045.38	381813.48	39°32'41.7950"N	80°22'58.1416"W	157.93	233.438	0.72	-0.03	-3.95	
2385.00	11.230	228.610	2370.30	45.63	-104.90	-138.82	1751033.42	381802.65	39°32'41.6869"N	80°22'58.2929"W	174.00	232.922	1.02	0.97	1.81	
2460.00	11.650	232.980	2443.81	49.00	-114.29	-150.34	1751021.90	381793.26	39°32'41.5930"N	80°22'58.4389"W	188.85	232.758	1.28	0.56	5.83	
2550.00	11.260	227.190	2532.02	52.84	-125.74	-164.05	1751008.19	381781.82	39°32'41.4785"N	80°22'58.6123"W	206.69	232.531	1.35	-0.43	-6.43	
2593.00	10.990	223.860	2574.21	53.97	-131.54	-169.97	1751002.27	381776.01	39°32'41.4206"N	80°22'58.6872"W	214.92	232.262	1.62	-0.63	-7.74	
2636.00	11.420	230.790	2616.40	55.37	-137.19	-176.10	1750996.14	381770.37	39°32'41.3642"N	80°22'58.7648"W	223.24	232.080	3.29	1.00	16.12	
2680.00	12.690	241.920	2659.43	58.33	-142.22	-183.74	1750988.50	381765.34	39°32'41.3137"N	80°22'58.8617"W	232.35	232.260	6.01	2.89	25.30	
2721.00	14.490	247.440	2699.28	62.72	-146.31	-192.46	1750979.79	381761.25	39°32'41.2725"N	80°22'58.9724"W	241.75	232.757	5.41	4.39	13.46	
2764.00	16.230	249.640	2740.75	68.57	-150.46	-203.06	1750969.18	381757.10	39°32'41.2304"N	80°22'59.1072"W	252.73	233.462	4.27	4.05	5.12	
2807.00	17.160	247.400	2781.93	74.89	-154.99	-214.55	1750957.69	381752.57	39°32'41.1845"N	80°22'59.2533"W	264.68	234.155	2.63	2.16	-5.21	
2894.00	16.940	244.830	2865.11	87.02	-165.31	-237.87	1750934.38	381742.25	39°32'41.0802"N	80°22'59.5497"W	289.67	235.201	0.90	-0.25	-2.95	
2980.00	18.140	242.800	2947.11	98.40	-176.76	-261.12	1750911.13	381730.80	39°32'40.9648"N	80°22'59.8450"W	315.32	235.904	1.57	1.40	-2.36	
3066.00	20.470	241.970	3028.27	110.26	-189.95	-286.30	1750885.95	381717.61	39°32'40.8320"N	80°23'0.1648"W	343.58	236.437	2.73	2.71	-0.97	
3152.00	23.530	242.590	3108.00	123.65	-204.92	-314.82	1750857.43	381702.64	39°32'40.6813"N	80°23'0.5269"W	375.64	236.939	3.57	3.56	0.72	
3238.00	27.010	239.190	3185.76	138.03	-222.84	-346.84	1750825.41	381684.73	39°32'40.5012"N	80°23'0.9334"W	412.26	237.281	4.38	4.05	-3.95	
3325.00	30.420	234.750	3262.06	151.71	-245.68	-381.81	1750790.44	381661.89	39°32'40.2720"N	80°23'1.3769"W	454.02	237.241	4.62	3.92	-5.10	
3411.00	32.460	229.870	3335.44	162.95	-273.12	-417.25	1750755.01	381634.44	39°32'39.9973"N	80°23'1.8258"W	498.69	236.792	3.79	2.37	-5.67	
3497.00	34.640	230.130	3407.11	173.06	-303.67	-453.66	1750718.60	381603.90	39°32'39.6919"N	80°23'2.2867"W	545.91	236.202	2.54	2.53	0.30	
3584.00	37.640	226.300	3477.37	182.34	-337.89	-491.85	1750680.40	381569.68	39°32'39.3500"N	80°23'2.7699"W	596.73	235.512	4.32	3.45	-4.40	
3670.00	40.390	227.350	3544.18	190.92	-374.92	-531.34	1750640.92	381532.66	39°32'38.9802"N	80°23'3.2693"W	650.30	234.793	3.29	3.20	1.22	



# Actual Wellpath Report

Elliott 1H (L-004588) AWP Proj: 19295'  
Page 4 of 11



REFERENCE WELLPATH IDENTIFICATION			
Operator	EQT PRODUCTION COMPANY	Well	Elliott 1H (L-004588)
Field	Marion	API	47-049-02499-00-00
Facility	Elliot Pad	Wellbore	Elliott 1H (L-004588) AWB
Slot	Slot 01		

WELLPATH DATA (228 stations)															
MD [ft]	Inclination [°]	Azimuth [°]	TVD [ft]	Vert Sect [ft]	North [ft]	East [ft]	Grid East [US ft]	Grid North [US ft]	Latitude	Longitude	Closure Dist [ft]	Closure Dir [°]	DLS [°/100ft]	Build Rate [°/100ft]	Turn Rate [°/100ft]
3756.00	41.960	233.550	3608.94	203.43	-410.89	-574.98	1750597.28	381496.68	39°32'38.6204"N	80°23'3.8218"W	706.71	234.450	5.08	1.83	7.21
3842.00	41.950	235.910	3672.90	220.25	-444.09	-621.92	1750550.35	381463.49	39°32'38.2878"N	80°23'4.4167"W	764.19	234.471	1.83	-0.01	2.74
3929.00	40.780	238.050	3738.20	239.20	-475.42	-670.11	1750502.16	381432.16	39°32'37.9734"N	80°23'5.0280"W	821.63	234.645	2.11	-1.34	2.46
4015.00	39.670	239.640	3803.86	259.21	-504.16	-717.63	1750454.64	381403.42	39°32'37.6848"N	80°23'5.6309"W	877.02	234.911	1.76	-1.29	1.85
4101.00	41.200	241.110	3869.32	280.70	-531.72	-766.12	1750406.16	381375.86	39°32'37.4077"N	80°23'6.2463"W	932.56	235.238	2.10	1.78	1.71
4187.00	43.010	241.530	3933.12	303.79	-559.39	-816.71	1750355.57	381348.19	39°32'37.1293"N	80°23'6.8885"W	989.91	235.591	2.13	2.10	0.49
4274.00	43.290	240.520	3996.60	327.33	-588.21	-868.76	1750303.53	381319.37	39°32'36.8394"N	80°23'7.5493"W	1049.16	235.899	0.86	0.32	-1.16
4360.00	43.300	237.670	4059.19	348.82	-618.50	-919.35	1750252.94	381289.09	39°32'36.5352"N	80°23'8.1912"W	1108.03	236.069	2.27	0.01	-3.31
4446.00	43.530	236.880	4121.67	368.60	-650.45	-969.07	1750203.22	381257.14	39°32'36.2146"N	80°23'8.8219"W	1167.13	236.130	0.69	0.27	-0.92
4532.00	41.660	236.340	4184.97	387.45	-682.48	-1017.67	1750154.62	381225.11	39°32'35.8933"N	80°23'9.4382"W	1225.33	236.153	2.22	-2.17	-0.63
4618.00	40.600	236.210	4249.75	405.45	-713.88	-1064.72	1750107.58	381193.71	39°32'35.5783"N	80°23'10.0347"W	1281.89	236.158	1.24	-1.23	-0.15
4704.00	39.690	234.830	4315.49	422.40	-745.27	-1110.42	1750061.87	381162.33	39°32'35.2637"N	80°23'10.6142"W	1337.33	236.132	1.48	-1.06	-1.60
4791.00	37.410	235.710	4383.52	438.74	-776.16	-1154.97	1750017.33	381131.44	39°32'34.9541"N	80°23'11.1789"W	1391.54	236.098	2.70	-2.62	1.01
4877.00	35.950	236.020	4452.49	454.74	-804.99	-1197.49	1749974.81	381102.61	39°32'34.6650"N	80°23'11.7180"W	1442.91	236.090	1.71	-1.70	0.36
4954.00	35.850	234.140	4514.87	468.21	-830.83	-1234.51	1749937.80	381076.77	39°32'34.4060"N	80°23'12.1872"W	1488.05	236.059	1.44	-0.13	-2.44
5041.00	36.770	233.940	4584.97	482.68	-861.08	-1276.21	1749896.10	381046.52	39°32'34.1030"N	80°23'12.7157"W	1539.54	235.992	1.07	1.06	-0.23
5127.00	35.660	237.520	4654.37	498.37	-889.70	-1318.17	1749854.14	381017.90	39°32'33.8161"N	80°23'13.2477"W	1590.33	235.983	2.78	-1.29	4.16
5213.00	35.460	238.160	4724.33	515.57	-916.32	-1360.51	1749811.80	380991.28	39°32'33.5488"N	80°23'13.7847"W	1640.31	236.039	0.49	-0.23	0.74
5299.00	37.840	238.810	4793.32	533.78	-943.15	-1404.27	1749768.04	380964.46	39°32'33.2795"N	80°23'14.3399"W	1691.60	236.114	2.80	2.77	0.76
5385.00	37.810	242.470	4861.26	554.31	-969.00	-1450.22	1749722.10	380938.61	39°32'33.0195"N	80°23'14.9231"W	1744.16	236.250	2.61	-0.03	4.26
5471.00	36.350	240.120	4929.87	575.06	-993.88	-1495.70	1749676.62	380913.73	39°32'32.7691"N	80°23'15.5005"W	1795.80	236.396	2.37	-1.70	-2.73
5557.00	38.500	240.090	4998.16	594.96	-1019.93	-1541.01	1749631.32	380887.68	39°32'32.5073"N	80°23'16.0755"W	1847.96	236.501	2.50	2.50	-0.03
5644.00	39.980	238.820	5065.55	615.33	-1047.90	-1588.39	1749583.93	380859.71	39°32'32.2262"N	80°23'16.6768"W	1902.92	236.586	1.94	1.70	-1.46
5730.00	39.880	239.220	5131.49	635.38	-1076.32	-1635.72	1749536.61	380831.30	39°32'31.9408"N	80°23'17.2773"W	1958.07	236.655	0.32	-0.12	0.47
5816.00	38.740	238.870	5198.03	655.20	-1104.34	-1682.44	1749489.89	380803.28	39°32'31.6593"N	80°23'17.8701"W	2012.50	236.720	1.35	-1.33	-0.41
5902.00	38.440	236.690	5265.26	673.60	-1132.93	-1727.82	1749444.51	380774.69	39°32'31.3722"N	80°23'18.4457"W	2066.13	236.747	1.62	-0.35	-2.53
5988.00	38.650	236.190	5332.52	690.80	-1162.56	-1772.47	1749399.86	380745.06	39°32'31.0751"N	80°23'19.0119"W	2119.72	236.739	0.44	0.24	-0.58
6075.00	38.890	236.450	5400.35	708.17	-1192.77	-1817.81	1749354.53	380714.85	39°32'30.7721"N	80°23'19.5868"W	2174.20	236.729	0.33	0.28	0.30
6161.00	38.730	237.410	5467.36	725.91	-1222.18	-1862.98	1749309.37	380685.45	39°32'30.4770"N	80°23'20.1595"W	2228.09	236.734	0.72	-0.19	1.12
6246.00	40.080	237.470	5533.04	744.11	-1251.22	-1908.45	1749263.89	380656.41	39°32'30.1856"N	80°23'20.7363"W	2282.05	236.750	1.59	1.59	0.07



# Actual Wellpath Report

Elliott 1H (L-004588) AWP Proj: 19295'  
Page 5 of 11



REFERENCE WELLPATH IDENTIFICATION				
Operator	EQT PRODUCTION COMPANY		Well	Elliott 1H (L-004588)
Field	Marion		API	47-049-02499-00-00
Facility	Elliot Pad		Wellbore	Elliott 1H (L-004588) AWB
Slot	Slot 01			

WELLPATH DATA (228 stations)															
MD [ft]	Inclination [°]	Azimuth [°]	TVD [ft]	Vert Sect [ft]	North [ft]	East [ft]	Grid East [US ft]	Grid North [US ft]	Latitude	Longitude	Closure Dist [ft]	Closure Dir [°]	DLS [°/100ft]	Build Rate [°/100ft]	Turn Rate [°/100ft]
6333.00	41.310	237.390	5599.00	763.24	-1281.75	-1956.26	1749216.09	380625.87	39°32'29.8791"N	80°23'21.3426"W	2338.77	236.767	1.42	1.41	-0.09
6419.00	40.590	235.470	5663.96	781.33	-1312.91	-2003.22	1749169.13	380594.72	39°32'29.5666"W	80°23'21.9381"W	2395.13	236.759	1.69	-0.84	-2.23
6505.00	39.900	233.450	5729.60	797.34	-1345.20	-2048.43	1749123.93	380562.43	39°32'29.2431"N	80°23'22.5111"W	2450.64	236.707	1.72	-0.80	-2.35
6591.00	39.920	234.010	5795.57	812.56	-1377.84	-2092.91	1749079.44	380529.79	39°32'28.9162"N	80°23'23.0747"W	2505.74	236.642	0.42	0.02	0.65
6678.00	39.910	235.590	5862.30	828.95	-1410.02	-2138.53	1749033.83	380497.62	39°32'28.5937"N	80°23'23.6528"W	2561.53	236.602	1.17	-0.01	1.82
6764.00	40.000	237.210	5928.22	846.64	-1440.58	-2184.52	1748987.84	380467.06	39°32'28.2872"N	80°23'24.2361"W	2616.75	236.597	1.21	0.10	1.88
6850.00	39.430	240.180	5994.38	866.30	-1469.13	-2231.46	1748940.91	380438.51	39°32'28.0004"N	80°23'24.8315"W	2671.66	236.640	2.30	-0.66	3.45
6936.00	38.930	238.360	6061.05	886.26	-1496.89	-2278.16	1748894.21	380410.76	39°32'27.7215"N	80°23'25.4241"W	2725.93	236.693	1.46	-0.58	-2.12
6955.00	38.700	237.660	6075.86	890.39	-1503.19	-2288.26	1748884.11	380404.45	39°32'27.6582"N	80°23'25.5522"W	2737.83	236.698	2.61	-1.21	-3.68
7006.00	37.720	236.470	6115.93	900.84	-1520.34	-2314.74	1748857.63	380387.30	39°32'27.4861"N	80°23'25.8880"W	2769.38	236.703	2.40	-1.92	-2.33
7082.00	38.660	231.980	6175.67	914.16	-1547.81	-2352.83	1748819.55	380359.83	39°32'27.2109"N	80°23'26.3707"W	2816.29	236.661	3.86	1.24	-5.91
7177.00	38.510	232.160	6249.93	928.85	-1584.23	-2399.56	1748772.82	380323.41	39°32'26.8464"N	80°23'26.9625"W	2875.36	236.567	0.20	-0.16	0.19
7272.00	38.350	231.820	6324.35	943.40	-1620.59	-2446.08	1748726.29	380287.06	39°32'26.4825"N	80°23'27.5517"W	2934.22	236.475	0.28	-0.17	-0.36
7367.00	38.400	232.110	6398.83	957.91	-1656.93	-2492.53	1748679.85	380250.72	39°32'26.1188"N	80°23'28.1400"W	2993.02	236.386	0.20	0.05	0.31
7463.00	38.090	231.860	6474.23	972.56	-1693.53	-2539.35	1748633.03	380214.12	39°32'25.7525"N	80°23'28.7330"W	3052.27	236.300	0.36	-0.32	-0.26
7558.00	38.490	232.060	6548.79	987.04	-1729.80	-2585.72	1748586.67	380177.85	39°32'25.3895"N	80°23'29.3201"W	3110.97	236.218	0.44	0.42	0.21
7653.00	38.540	232.020	6623.12	1001.67	-1766.19	-2632.36	1748540.03	380141.47	39°32'25.0253"N	80°23'29.9108"W	3169.97	236.140	0.06	0.05	-0.04
7747.00	38.440	231.600	6696.70	1015.91	-1802.36	-2678.34	1748494.05	380105.30	39°32'24.6633"N	80°23'30.4931"W	3228.31	236.062	0.30	-0.11	-0.45
7842.00	38.400	231.810	6771.13	1030.18	-1838.95	-2724.67	1748447.72	380068.71	39°32'24.2972"N	80°23'31.0799"W	3287.18	235.984	0.14	-0.04	0.22
7937.00	38.500	232.180	6845.53	1044.75	-1875.32	-2771.22	1748401.18	380032.34	39°32'23.9332"N	80°23'31.6694"W	3346.11	235.913	0.26	0.11	0.39
8032.00	38.420	232.010	6919.92	1059.42	-1911.62	-2817.84	1748354.56	379996.05	39°32'23.5699"N	80°23'32.2598"W	3405.07	235.847	0.14	-0.08	-0.18
8127.00	38.410	231.920	6994.35	1073.94	-1947.99	-2864.33	1748308.07	379959.68	39°32'23.2059"N	80°23'32.8486"W	3463.97	235.781	0.06	-0.01	-0.09
8223.00	38.200	231.580	7069.68	1088.37	-1984.83	-2911.07	1748261.34	379922.84	39°32'22.8372"N	80°23'33.4404"W	3523.33	235.713	0.31	-0.22	-0.35
8413.00	38.540	231.550	7218.65	1116.59	-2058.14	-3003.45	1748168.96	379849.53	39°32'22.1036"N	80°23'34.6102"W	3640.97	235.579	0.18	0.18	-0.02
8604.00	37.330	250.140	7369.79	1162.01	-2115.01	-3104.85	1748067.56	379792.67	39°32'21.5316"N	80°23'35.8973"W	3756.78	235.738	6.00	-0.63	9.73
8699.00	40.870	264.830	7443.66	1200.32	-2127.62	-3163.04	1748009.38	379780.05	39°32'21.4012"N	80°23'36.6384"W	3812.04	236.073	10.42	3.73	15.46
8794.00	44.060	274.100	7513.80	1250.67	-2128.06	-3227.03	1747945.40	379779.61	39°32'21.3906"N	80°23'37.4549"W	3865.54	236.597	7.39	3.36	9.76
8889.00	49.060	282.190	7579.16	1310.64	-2118.11	-3295.15	1747877.28	379789.57	39°32'21.4822"N	80°23'38.3257"W	3917.19	237.267	8.11	5.26	8.52
8984.00	53.930	290.070	7638.34	1379.71	-2097.33	-3366.40	1747806.04	379810.35	39°32'21.6806"N	80°23'39.2377"W	3966.28	238.076	8.27	5.13	8.29
9079.00	58.750	298.680	7691.05	1456.55	-2064.60	-3438.22	1747734.22	379843.07	39°32'21.9970"N	80°23'40.1585"W	4010.48	239.016	9.09	5.07	9.06



# Actual Wellpath Report

Elliott 1H (L-004588) AWP Proj: 19295'  
Page 6 of 11



REFERENCE WELLPATH IDENTIFICATION				
Operator	EQT PRODUCTION COMPANY		Well	Elliott 1H (L-004588)
Field	Marion		API	47-049-02499-00-00
Facility	Elliot Pad		Wellbore	Elliott 1H (L-004588) AWB
Slot	Slot 01			

## WELLPATH DATA (228 stations)

MD [ft]	Inclination [°]	Azimuth [°]	TVD [ft]	Vert Sect [ft]	North [ft]	East [ft]	Grid East [US ft]	Grid North [US ft]	Latitude	Longitude	Closure Dist [ft]	Closure Dir [°]	DLS [°/100ft]	Build Rate [°/100ft]	Turn Rate [°/100ft]
9174.00	65.400	304.880	7735.55	1539.95	-2020.33	-3509.41	1747663.03	379887.34	39°32'22.4275"N	80°23'41.0728"W	4049.41	240.071	9.07	7.00	6.53
9269.00	69.590	310.410	7771.93	1627.65	-1966.71	-3578.82	1747593.63	379940.95	39°32'22.9506"N	80°23'41.9654"W	4083.61	241.209	6.95	4.41	5.82
9365.00	74.900	319.310	7801.25	1718.21	-1902.25	-3643.45	1747529.00	380005.42	39°32'23.5813"N	80°23'42.7986"W	4110.14	242.431	10.41	5.53	9.27
9460.00	79.980	327.120	7821.93	1807.45	-1828.04	-3698.86	1747473.60	380079.63	39°32'24.3093"N	80°23'43.5152"W	4125.93	243.701	9.64	5.35	8.22
9555.00	92.090	330.510	7828.49	1895.68	-1747.11	-3747.82	1747424.64	380160.55	39°32'25.1042"N	80°23'44.1504"W	4135.03	245.007	13.23	12.75	3.57
9650.00	93.140	329.180	7824.15	1983.59	-1665.05	-3795.49	1747376.97	380242.60	39°32'25.9105"N	80°23'44.7693"W	4144.65	246.313	1.78	1.11	-1.40
9746.00	93.080	329.450	7818.95	2072.72	-1582.62	-3844.40	1747328.06	380325.03	39°32'26.7203"N	80°23'45.4041"W	4157.42	247.625	0.29	-0.06	0.28
9841.00	89.970	329.140	7816.42	2161.02	-1500.97	-3892.89	1747279.57	380406.67	39°32'27.5224"N	80°23'46.0334"W	4172.23	248.915	3.29	-3.27	-0.33
9936.00	89.910	329.090	7816.52	2249.48	-1419.45	-3941.65	1747230.81	380488.19	39°32'28.3234"N	80°23'46.6662"W	4189.45	250.195	0.08	-0.06	-0.05
10031.00	89.970	329.380	7816.62	2337.86	-1337.81	-3990.25	1747182.22	380569.82	39°32'29.1253"N	80°23'47.2968"W	4208.54	251.465	0.31	0.06	0.31
10126.00	89.970	329.370	7816.67	2426.15	-1256.07	-4038.64	1747133.83	380651.56	39°32'29.9284"N	80°23'47.9249"W	4229.46	252.724	0.01	0.00	-0.01
10221.00	89.690	328.730	7816.95	2514.65	-1174.59	-4087.50	1747084.98	380733.03	39°32'30.7288"N	80°23'48.5589"W	4252.92	253.967	0.74	-0.29	-0.67
10316.00	90.120	329.110	7817.11	2603.22	-1093.23	-4136.54	1747035.94	380814.39	39°32'31.5280"N	80°23'49.1952"W	4278.57	255.196	0.60	0.45	0.40
10412.00	90.430	329.680	7816.65	2692.43	-1010.60	-4185.42	1746987.07	380897.01	39°32'32.3398"N	80°23'49.8296"W	4305.70	256.425	0.68	0.32	0.59
10507.00	89.910	328.270	7816.36	2780.96	-929.20	-4234.38	1746938.11	380978.41	39°32'33.1395"N	80°23'50.4649"W	4335.13	257.623	1.58	-0.55	-1.48
10602.00	90.150	328.730	7816.31	2869.78	-848.20	-4284.02	1746888.47	381059.40	39°32'33.9351"N	80°23'51.1088"W	4367.18	258.801	0.55	0.25	0.48
10697.00	89.780	329.150	7816.37	2958.34	-766.82	-4333.03	1746839.46	381140.78	39°32'34.7345"N	80°23'51.7448"W	4400.36	259.964	0.59	-0.39	0.44
10791.00	89.940	328.770	7816.60	3045.95	-686.28	-4381.50	1746790.99	381221.31	39°32'35.5257"N	80°23'52.3737"W	4434.92	261.098	0.44	0.17	-0.40
10887.00	89.750	330.260	7816.86	3135.09	-603.55	-4430.20	1746742.30	381304.03	39°32'36.3384"N	80°23'53.0059"W	4471.12	262.242	1.56	-0.20	1.55
10982.00	90.120	330.470	7816.97	3222.76	-520.98	-4477.18	1746695.32	381386.60	39°32'37.1498"N	80°23'53.6160"W	4507.38	263.363	0.45	0.39	0.22
11077.00	89.780	329.690	7817.05	3310.62	-438.64	-4524.56	1746647.94	381468.94	39°32'37.9589"N	80°23'54.2314"W	4545.77	264.463	0.90	-0.36	-0.82
11172.00	89.880	329.530	7817.33	3398.77	-356.69	-4572.62	1746599.89	381550.88	39°32'38.7640"N	80°23'54.8553"W	4586.51	265.540	0.20	0.11	-0.17
11267.00	90.120	330.480	7817.33	3486.67	-274.42	-4620.11	1746552.40	381633.15	39°32'39.5724"N	80°23'55.4720"W	4628.25	266.601	1.03	0.25	1.00
11362.00	89.600	329.970	7817.57	3574.44	-191.96	-4667.29	1746505.22	381715.60	39°32'40.3827"N	80°23'56.0847"W	4671.23	267.645	0.77	-0.55	-0.54
11457.00	90.920	330.870	7817.13	3662.07	-109.35	-4714.18	1746458.33	381798.21	39°32'41.1945"N	80°23'56.6938"W	4715.45	268.671	1.68	1.39	0.95
11553.00	90.280	330.220	7816.13	3750.55	-25.76	-4761.38	1746411.13	381881.79	39°32'42.0159"N	80°23'57.3070"W	4761.45	269.690	0.95	-0.67	-0.68
11648.00	90.250	330.270	7815.69	3838.30	56.71	-4808.53	1746363.99	381964.26	39°32'42.8263"N	80°23'57.9193"W	4808.87	270.676	0.06	-0.03	0.05
11743.00	90.310	330.120	7815.23	3926.09	139.15	-4855.75	1746316.77	382046.69	39°32'43.6363"N	80°23'58.5326"W	4857.74	271.641	0.17	0.06	-0.16
11838.00	90.280	330.480	7814.74	4013.80	221.66	-4902.82	1746269.71	382129.20	39°32'44.4471"N	80°23'59.1439"W	4907.83	272.589	0.38	-0.03	0.38
11934.00	90.060	330.210	7814.45	4102.41	305.09	-4950.32	1746222.21	382212.62	39°32'45.2669"N	80°23'59.7609"W	4959.71	273.527	0.36	-0.23	-0.28



# Actual Wellpath Report

Elliott 1H (L-004588) AWP Proj: 19295'  
Page 7 of 11



REFERENCE WELLPATH IDENTIFICATION				
Operator	EQT PRODUCTION COMPANY		Well	Elliott 1H (L-004588)
Field	Marion		API	47-049-02499-00-00
Facility	Elliot Pad		Wellbore	Elliott 1H (L-004588) AWB
Slot	Slot 01			

WELLPATH DATA (228 stations)															
MD [ft]	Inclination [°]	Azimuth [°]	TVD [ft]	Vert Sect [ft]	North [ft]	East [ft]	Grid East [US ft]	Grid North [US ft]	Latitude	Longitude	Closure Dist [ft]	Closure Dir [°]	DLS [°/100ft]	Build Rate [°/100ft]	Turn Rate [°/100ft]
12028.00	90.250	329.670	7814.20	4189.43	386.45	-4997.40	1746175.13	382293.97	39°32'46.0663"N	80°24'0.3723"W	5012.32	274.422	0.61	0.20	-0.57
12123.00	90.030	329.410	7813.97	4277.63	468.33	-5045.56	1746126.97	382375.86	39°32'46.8708"N	80°24'0.9975"W	5067.25	275.303	0.36	-0.23	-0.27
12219.00	90.280	327.830	7813.71	4367.31	550.29	-5095.55	1746076.99	382457.81	39°32'47.6758"N	80°24'1.6461"W	5125.18	276.164	1.67	0.26	-1.65
12313.00	90.250	326.300	7813.27	4456.00	629.18	-5146.65	1746025.89	382536.69	39°32'48.4504"N	80°24'2.3085"W	5184.97	276.970	1.63	-0.03	-1.63
12408.00	90.460	326.610	7812.68	4545.96	708.36	-5199.15	1745973.40	382615.86	39°32'49.2277"N	80°24'2.9887"W	5247.18	277.758	0.39	0.22	0.33
12504.00	89.910	326.680	7812.37	4636.77	788.54	-5251.93	1745920.62	382696.04	39°32'50.0149"N	80°24'3.6727"W	5310.80	278.539	0.58	-0.57	0.07
12599.00	89.600	329.280	7812.78	4725.88	869.08	-5302.30	1745870.25	382776.58	39°32'50.8058"N	80°24'4.3259"W	5373.05	279.308	2.76	-0.33	2.74
12694.00	89.780	332.650	7813.29	4813.16	952.13	-5348.40	1745824.16	382859.62	39°32'51.6220"N	80°24'4.9250"W	5432.48	280.094	3.55	0.19	3.55
12789.00	90.430	332.720	7813.12	4899.28	1036.54	-5391.99	1745780.57	382944.02	39°32'52.4519"N	80°24'5.4923"W	5490.71	280.882	0.69	0.68	0.07
12884.00	90.370	331.650	7812.46	4985.75	1120.56	-5436.32	1745736.24	383028.04	39°32'53.2778"N	80°24'6.0689"W	5550.60	281.647	1.13	-0.06	-1.13
12979.00	90.680	332.160	7811.58	5072.40	1204.36	-5481.05	1745691.51	383111.84	39°32'54.1016"N	80°24'6.6507"W	5611.81	282.393	0.63	0.33	0.54
13074.00	90.430	331.910	7810.66	5158.97	1288.26	-5525.60	1745646.96	383195.73	39°32'54.9264"N	80°24'7.2301"W	5673.79	283.124	0.37	-0.26	-0.26
13168.00	90.800	332.420	7809.66	5244.54	1371.38	-5569.49	1745603.08	383278.85	39°32'55.7434"N	80°24'7.8010"W	5735.84	283.833	0.67	0.39	0.54
13263.00	90.620	332.370	7808.48	5330.86	1455.56	-5613.50	1745559.06	383363.02	39°32'56.5710"N	80°24'8.3737"W	5799.15	284.536	0.20	-0.19	-0.05
13357.00	90.740	329.780	7807.36	5417.15	1537.82	-5658.96	1745513.61	383445.28	39°32'57.3795"N	80°24'8.9645"W	5864.19	285.203	2.76	0.13	-2.76
13452.00	90.890	329.890	7806.01	5505.15	1619.95	-5706.69	1745465.88	383527.40	39°32'58.1864"N	80°24'9.5843"W	5932.16	285.848	0.20	0.16	0.12
13547.00	90.990	330.040	7804.45	5593.06	1702.18	-5754.24	1745418.34	383609.63	39°32'58.9943"N	80°24'10.2018"W	6000.72	286.479	0.19	0.11	0.16
13642.00	90.770	330.410	7802.99	5680.82	1784.63	-5801.41	1745371.17	383692.07	39°32'59.8045"N	80°24'10.8145"W	6069.70	287.099	0.45	-0.23	0.39
13737.00	90.370	330.550	7802.05	5768.42	1867.29	-5848.22	1745324.37	383774.73	39°33'0.6167"N	80°24'11.4226"W	6139.09	287.708	0.45	-0.42	0.15
13833.00	90.620	330.530	7801.22	5856.90	1950.87	-5895.43	1745277.16	383858.31	39°33'1.4381"N	80°24'12.0360"W	6209.83	288.310	0.26	0.26	-0.02
13928.00	90.120	330.260	7800.61	5944.55	2033.47	-5942.36	1745230.23	383940.90	39°33'2.2497"N	80°24'12.6457"W	6280.65	288.891	0.60	-0.53	-0.28
14023.00	90.030	330.360	7800.48	6032.27	2116.00	-5989.41	1745183.18	384023.42	39°33'3.0606"N	80°24'13.2570"W	6352.20	289.458	0.14	-0.09	0.11
14118.00	90.370	330.690	7800.15	6119.84	2198.70	-6036.16	1745136.44	384106.12	39°33'3.8733"N	80°24'13.8643"W	6424.13	290.014	0.50	0.36	0.35
14213.00	90.000	330.210	7799.84	6207.46	2281.34	-6083.01	1745089.59	384188.76	39°33'4.6854"N	80°24'14.4730"W	6496.73	290.558	0.64	-0.39	-0.51
14308.00	89.660	329.690	7800.12	6295.40	2363.57	-6130.58	1745042.02	384270.98	39°33'5.4933"N	80°24'15.0908"W	6570.42	291.084	0.65	-0.36	-0.55
14403.00	90.340	330.500	7800.12	6383.24	2445.92	-6177.94	1744994.66	384353.33	39°33'6.3025"N	80°24'15.7060"W	6644.51	291.599	1.11	0.72	0.85
14499.00	89.970	330.560	7799.87	6471.74	2529.50	-6225.17	1744947.43	384436.90	39°33'7.1238"N	80°24'16.3197"W	6719.46	292.114	0.39	-0.39	0.06
14594.00	89.850	330.770	7800.01	6559.22	2612.32	-6271.71	1744900.90	384519.71	39°33'7.9376"N	80°24'16.9244"W	6794.01	292.613	0.25	-0.13	0.22
14689.00	89.940	330.450	7800.19	6646.74	2695.09	-6318.33	1744854.28	384602.48	39°33'8.7510"N	80°24'17.5302"W	6869.12	293.101	0.35	0.09	-0.34
14784.00	90.060	330.560	7800.19	6734.32	2777.78	-6365.11	1744807.51	384685.16	39°33'9.5635"N	80°24'18.1380"W	6944.83	293.577	0.17	0.13	0.12



# Actual Wellpath Report

Elliott 1H (L-004588) AWP Proj: 19295'  
Page 8 of 11



REFERENCE WELLPATH IDENTIFICATION			
Operator	EQT PRODUCTION COMPANY	Well	Elliott 1H (L-004588)
Field	Marion	API	47-049-02499-00-00
Facility	Elliot Pad	Wellbore	Elliott 1H (L-004588) AWB
Slot	Slot 01		

WELLPATH DATA (228 stations)															
MD [ft]	Inclination [°]	Azimuth [°]	TVD [ft]	Vert Sect [ft]	North [ft]	East [ft]	Grid East [US ft]	Grid North [US ft]	Latitude	Longitude	Closure Dist [ft]	Closure Dir [°]	DLS [°/100ft]	Buld Rate [°/100ft]	Turn Rate [°/100ft]
14879.00	89.750	330.700	7800.35	6821.83	2860.57	-6411.70	1744760.92	384767.95	39°33'10.3771"N	80°24'18.7434"W	7020.88	294.044	0.36	-0.33	0.15
14974.00	89.940	330.330	7800.60	6909.41	2943.27	-6458.46	1744714.16	384850.64	39°33'11.1897"N	80°24'19.3509"W	7097.50	294.500	0.44	0.20	-0.39
15069.00	89.570	330.110	7801.01	6997.18	3025.72	-6505.64	1744666.98	384933.09	39°33'11.9998"N	80°24'19.9639"W	7174.84	294.943	0.45	-0.39	-0.23
15164.00	90.030	330.220	7801.34	7084.98	3108.13	-6552.90	1744619.72	385015.49	39°33'12.8095"N	80°24'20.5778"W	7252.65	295.376	0.50	0.48	0.12
15259.00	90.030	330.370	7801.29	7172.70	3190.64	-6599.98	1744572.65	385098.00	39°33'13.6203"N	80°24'21.1894"W	7330.75	295.801	0.16	0.00	0.16
15354.00	89.880	329.960	7801.37	7260.50	3273.05	-6647.24	1744525.39	385180.41	39°33'14.4301"N	80°24'21.8034"W	7409.37	296.215	0.46	-0.16	-0.43
15449.00	89.880	330.210	7801.56	7348.36	3355.39	-6694.62	1744478.01	385262.74	39°33'15.2391"N	80°24'22.4188"W	7488.43	296.620	0.26	0.00	0.26
15545.00	90.310	330.400	7801.41	7436.99	3438.79	-6742.18	1744430.46	385346.13	39°33'16.0585"N	80°24'23.0367"W	7568.50	297.023	0.49	0.45	0.20
15639.00	90.120	329.550	7801.05	7523.99	3520.17	-6789.21	1744383.43	385427.51	39°33'16.8581"N	80°24'23.6476"W	7647.55	297.407	0.93	-0.20	-0.90
15734.00	90.550	330.410	7800.50	7611.91	3602.43	-6836.74	1744335.90	385509.76	39°33'17.6663"N	80°24'24.2649"W	7727.77	297.786	1.01	0.45	0.91
15829.00	90.460	330.430	7799.66	7699.55	3685.04	-6883.63	1744289.01	385592.37	39°33'18.4781"N	80°24'24.8742"W	7807.94	298.162	0.10	-0.09	0.02
15924.00	90.220	330.180	7799.10	7787.26	3767.56	-6930.69	1744241.96	385674.89	39°33'19.2889"N	80°24'25.4857"W	7888.54	298.529	0.36	-0.25	-0.26
16019.00	90.490	330.470	7798.51	7874.96	3850.10	-6977.72	1744194.93	385757.42	39°33'20.0999"N	80°24'26.0967"W	7969.44	298.889	0.42	0.28	0.31
16114.00	90.400	330.200	7797.77	7962.65	3932.65	-7024.74	1744147.91	385839.96	39°33'20.9110"N	80°24'26.7076"W	8050.63	299.241	0.30	-0.09	-0.28
16209.00	90.280	330.450	7797.21	8050.35	4015.19	-7071.77	1744100.88	385922.49	39°33'21.7220"N	80°24'27.3187"W	8132.14	299.587	0.29	-0.13	0.26
16304.00	90.400	329.280	7796.64	8138.34	4097.34	-7119.46	1744053.19	386004.65	39°33'22.5292"N	80°24'27.9381"W	8214.32	299.921	1.24	0.13	-1.23
16400.00	90.150	329.120	7796.18	8227.67	4179.80	-7168.62	1744004.04	386087.10	39°33'23.3392"N	80°24'28.5763"W	8298.18	300.245	0.31	-0.26	-0.17
16494.00	90.650	329.900	7795.53	8314.95	4260.80	-7216.31	1743956.35	386168.10	39°33'24.1350"N	80°24'29.1956"W	8380.31	300.559	0.99	0.53	0.83
16590.00	90.280	329.220	7794.75	8404.06	4343.57	-7264.95	1743907.72	386250.85	39°33'24.9480"N	80°24'29.8272"W	8464.40	300.874	0.81	-0.39	-0.71
16685.00	89.690	329.250	7794.77	8492.44	4425.20	-7313.54	1743859.13	386332.48	39°33'25.7499"N	80°24'30.4581"W	8548.11	301.177	0.62	-0.62	0.03
16780.00	89.970	329.290	7795.05	8580.80	4506.86	-7362.09	1743810.59	386414.14	39°33'26.5521"N	80°24'31.0884"W	8632.04	301.474	0.30	0.29	0.04
16875.00	89.910	329.050	7795.15	8669.22	4588.43	-7410.77	1743761.90	386495.71	39°33'27.3534"N	80°24'31.7205"W	8716.26	301.764	0.26	-0.06	-0.25
16969.00	90.220	329.630	7795.05	8756.60	4669.29	-7458.71	1743713.97	386576.56	39°33'28.1477"N	80°24'32.3429"W	8799.69	302.047	0.70	0.33	0.62
17064.00	89.660	329.190	7795.15	8844.87	4751.07	-7507.05	1743665.63	386658.33	39°33'28.9511"N	80°24'32.9707"W	8884.17	302.329	0.75	-0.59	-0.46
17159.00	89.630	329.230	7795.73	8933.27	4832.68	-7555.68	1743617.01	386739.94	39°33'29.7527"N	80°24'33.6020"W	8969.01	302.603	0.05	-0.03	0.04
17254.00	89.820	329.260	7796.19	9021.64	4914.32	-7604.26	1743568.43	386821.57	39°33'30.5547"N	80°24'34.2328"W	9054.02	302.873	0.20	0.20	0.03
17349.00	89.570	329.100	7796.70	9110.05	4995.90	-7652.93	1743519.76	386903.15	39°33'31.3561"N	80°24'34.8647"W	9139.28	303.137	0.31	-0.26	-0.17
17444.00	89.450	329.540	7797.51	9198.38	5077.60	-7701.40	1743471.29	386984.84	39°33'32.1587"N	80°24'35.4941"W	9224.62	303.397	0.48	-0.13	0.46
17539.00	89.540	329.390	7798.35	9286.62	5159.42	-7749.67	1743423.03	387066.66	39°33'32.9625"N	80°24'36.1209"W	9310.05	303.654	0.18	0.09	-0.16
17635.00	89.380	329.390	7799.25	9375.83	5242.04	-7798.55	1743374.15	387149.27	39°33'33.7741"N	80°24'36.7556"W	9396.61	303.908	0.17	-0.17	0.00





# Actual Wellpath Report

Elliott 1H (L-004588) AWP Proj: 19295'  
Page 9 of 11



REFERENCE WELLPATH IDENTIFICATION			
Operator	EQT PRODUCTION COMPANY	Well	Elliott 1H (L-004588)
Field	Marion	API	47-049-02499-00-00
Facility	Elliot Pad	Wellbore	Elliott 1H (L-004588) AWB
Slot	Slot 01		

WELLPATH DATA (228 stations) † = interpolated, ‡ = extrapolated station															
MD [ft]	Inclination [°]	Azimuth [°]	TVD [ft]	Vert Sect [ft]	North [ft]	East [ft]	Grid East [US ft]	Grid North [US ft]	Latitude	Longitude	Closure Dist [ft]	Closure Dir [°]	DLS [°/100ft]	Build Rate [°/100ft]	Turn Rate [°/100ft]
17730.00	89.420	329.450	7800.24	9464.09	5323.82	-7846.87	1743325.83	387231.05	39°33'34.5775"N	80°24'37.3832"W	9482.43	304.155	0.08	0.04	0.06
17824.00	89.170	329.260	7801.40	9551.46	5404.69	-7894.78	1743277.92	387311.91	39°33'35.3718"N	80°24'38.0053"W	9567.56	304.395	0.33	-0.27	-0.20
17919.00	89.970	329.340	7802.11	9639.80	5486.37	-7943.28	1743229.42	387393.59	39°33'36.1742"N	80°24'38.6351"W	9653.81	304.633	0.85	0.84	0.08
18014.00	89.940	329.020	7802.19	9728.21	5567.96	-7991.96	1743180.75	387475.17	39°33'36.9756"N	80°24'39.2671"W	9740.30	304.865	0.34	-0.03	-0.34
18109.00	90.180	329.510	7802.09	9816.57	5649.61	-8040.51	1743132.21	387556.82	39°33'37.7778"N	80°24'39.8975"W	9826.90	305.094	0.57	0.25	0.52
18204.00	89.970	329.270	7801.97	9904.86	5731.37	-8088.88	1743083.84	387638.58	39°33'38.5809"N	80°24'40.5257"W	9913.56	305.319	0.34	-0.22	-0.25
18299.00	90.060	329.280	7801.94	9993.22	5813.04	-8137.42	1743035.30	387720.24	39°33'39.3831"N	80°24'41.1559"W	10000.45	305.540	0.10	0.09	0.01
18395.00	89.690	330.050	7802.15	10082.26	5895.89	-8185.90	1742986.82	387803.09	39°33'40.1971"N	80°24'41.7857"W	10088.14	305.763	0.89	-0.39	0.80
18489.00	89.720	329.120	7802.63	10169.49	5976.96	-8233.49	1742939.24	387884.15	39°33'40.9935"N	80°24'42.4037"W	10174.20	305.977	0.99	0.03	-0.99
18584.00	89.720	329.410	7803.10	10257.86	6058.61	-8282.04	1742890.69	387965.80	39°33'41.7956"N	80°24'43.0342"W	10261.53	306.187	0.31	0.00	0.31
18680.00	89.660	329.400	7803.62	10347.06	6141.25	-8330.90	1742841.83	388048.43	39°33'42.6073"N	80°24'43.6687"W	10349.82	306.396	0.06	-0.06	-0.01
18775.00	89.970	329.420	7803.92	10435.33	6223.02	-8379.25	1742793.49	388130.20	39°33'43.4107"N	80°24'44.2966"W	10437.33	306.600	0.33	0.33	0.02
18870.00	89.820	329.340	7804.10	10523.63	6304.78	-8427.63	1742745.11	388211.95	39°33'44.2138"N	80°24'44.9249"W	10524.98	306.800	0.18	-0.16	-0.08
18965.00	89.720	329.260	7804.48	10611.97	6386.46	-8476.13	1742696.61	388293.63	39°33'45.0162"N	80°24'45.5548"W	10612.81	306.997	0.13	-0.11	-0.08
19061.00	89.690	328.970	7804.97	10701.35	6468.85	-8525.41	1742647.33	388376.01	39°33'45.8254"N	80°24'46.1946"W	10701.81	307.190	0.30	-0.03	-0.30
19156.00	89.880	329.370	7805.33	10789.77	6550.42	-8574.10	1742598.65	388457.58	39°33'46.6267"N	80°24'46.8268"W	10789.96	307.379	0.47	0.20	0.42
19251.00	89.780	329.260	7805.61	10878.10	6632.12	-8622.58	1742550.17	388539.27	39°33'47.4292"N	80°24'47.4564"W	10878.14	307.566	0.16	-0.11	-0.12
19295.00‡	89.780	329.260	7805.78	10919.03	6669.94	-8645.07	1742527.68	388577.09	39°33'47.8007"N	80°24'47.7484"W	10919.03	307.651	0.00	0.00	0.00

HOLE & CASING SECTIONS - Ref Wellbore: Elliott 1H (L-004588) AWB Ref Wellpath: Elliott 1H (L-004588) AWP Proj: 19295'									
String/Diameter	Start MD [ft]	End MD [ft]	Interval [ft]	Start TVD [ft]	End TVD [ft]	Start N/S [ft]	Start E/W [ft]	End N/S [ft]	End E/W [ft]
17.5in Open Hole	28.00	1031.00	1003.00	28.00	1031.00	0.00	0.00	-0.23	-1.80
13.375in Casing Surface	28.00	1031.00	1003.00	28.00	1031.00	0.00	0.00	-0.23	-1.80
12.25in Open Hole	1031.00	2514.00	1483.00	1031.00	2496.72	-0.23	-1.80	-121.04	-158.76
9.625in Casing Intermediate	28.00	2514.00	2486.00	28.00	2496.72	0.00	0.00	-121.04	-158.76



# Actual Wellpath Report

Elliott 1H (L-004588) AWP Proj: 19295'  
Page 10 of 11



REFERENCE WELLPATH IDENTIFICATION			
Operator	EQT PRODUCTION COMPANY	Well	Elliott 1H (L-004588)
Field	Marion	API	47-049-02499-00-00
Facility	Elliot Pad	Wellbore	Elliott 1H (L-004588) AWB
Slot	Slot 01		

TARGETS								
Name	TVD [ft]	North [ft]	East [ft]	Grid East [US ft]	Grid North [US ft]	Latitude	Longitude	Shape
Elliott 1H BHL Rev-1	7824.00	6680.50	-8637.38	1742535.37	388587.65	39°33'47.9059"N	80°24'47.6517"W	point
Elliott 1H LP Rev-1	7824.00	-1752.82	-3739.26	1747433.20	380154.83	39°32'25.0486"N	80°23'44.0405"W	point

WELLPATH COMPOSITION - Ref Wellbore: Elliott 1H (L-004588) AWB Ref Wellpath: Elliott 1H (L-004588) AWP Proj: 19295'					
Start MD [ft]	End MD [ft]	Positional Uncertainty Model	Log Name/Comment	Wellbore	Survey Date
28.00	890.00	Gyrodatta 2015 - CT+WIR+ALC	01 Gyrodatta Cont Gyro <17-1/2">(115'-890')	Elliott 1H (L-004588) AWB	7/8/2021
890.00	6955.00	OWSG MWD rev2 - Standard	02 SDI MWD <8-3/4">(890')(1049'-6955')	Elliott 1H (L-004588) AWB	7/8/2021
6955.00	19295.00	OWSG MWD rev2 + IFR1 + Multi-Station Correction	03 BH AT Curve + MagVAR MSA <8-1/2">(6955')(7006'-19251')	Elliott 1H (L-004588) AWB	8/6/2021



# Actual Wellpath Report

Elliott 1H (L-004588) AWP Proj: 19295'  
Page 11 of 11

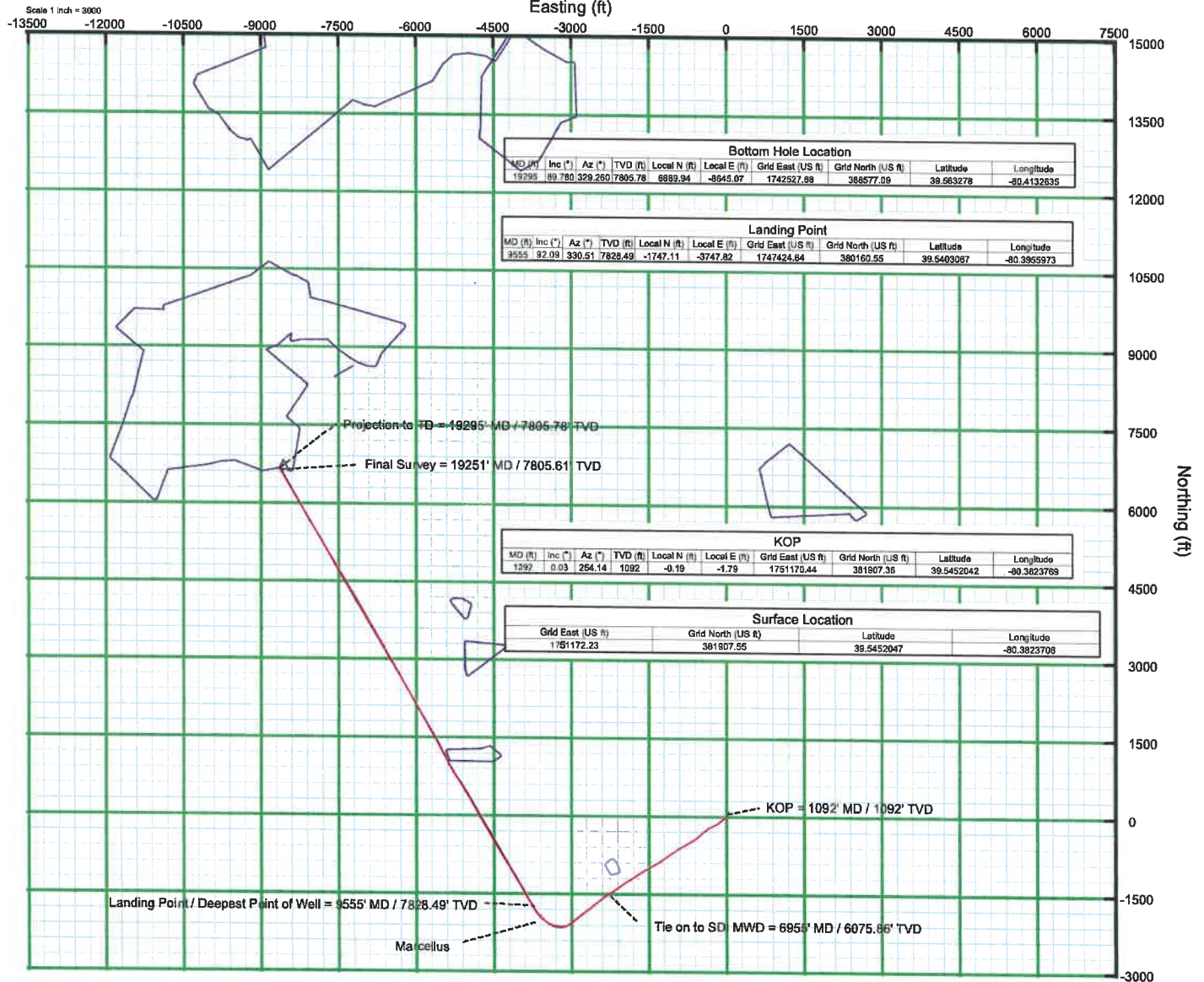
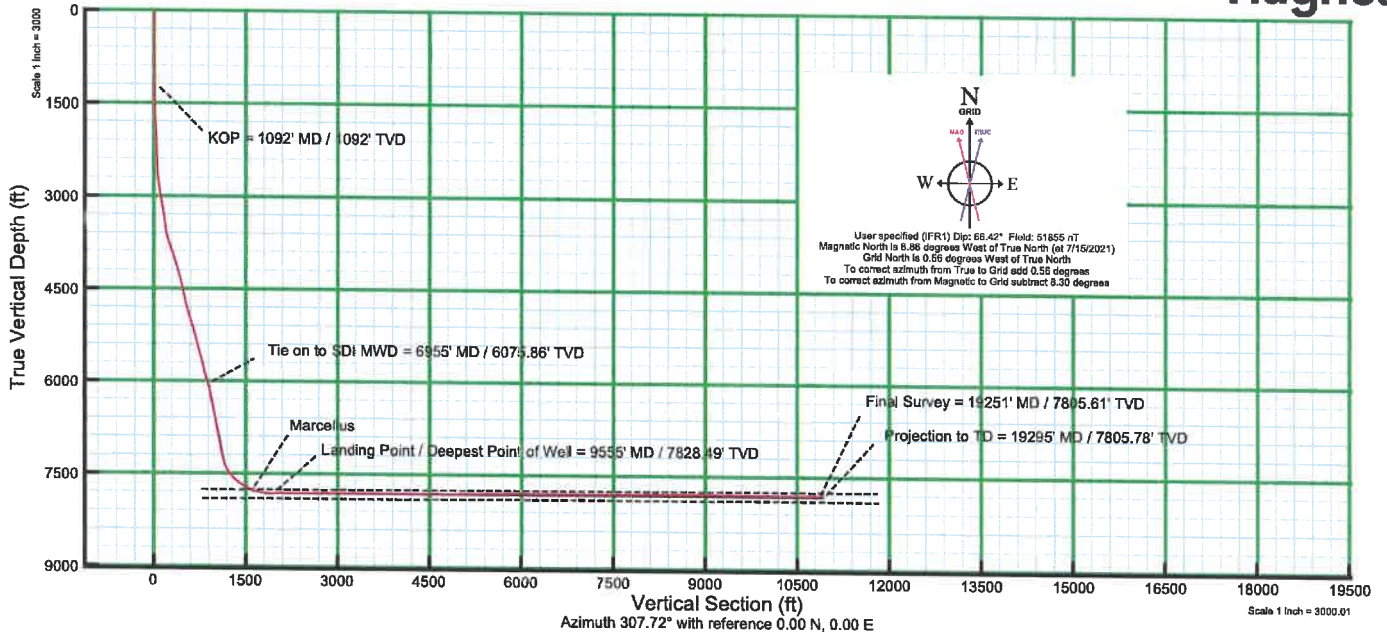


REFERENCE WELLPATH IDENTIFICATION			
Operator	EQT PRODUCTION COMPANY	Well	Elliott 1H (L-004588)
Field	Marion	API	47-049-02499-00-00
Facility	Elliot Pad	Wellbore	Elliott 1H (L-004588) AWB
Slot	Slot 01		

COMMENTS
<p><b>Wellpath general comments</b> API: 47-049-02499-0000 BH Job #: 110974195 Rig: Patterson 292 Duration: 8/12/21 - 8/14/21</p> <p>Gyrodata Cont Gyro &lt;17-1/2"&gt;(115'-890') SDI MWD &lt;8-3/4"&gt;(890')(1049'-6955') BH AT Curve + MagVAR MSA &lt;8-1/2"&gt;(6955')(7006'-19251') Projected MD at TD: 19295'</p>



KB Elevation=1370 FT  
 Ground Elevation=1342 FT  
 All Survey Measurements were taken from KB Elevation



10/14/2022