



Actual Wellpath Report

Elliott 13H (L-003935) AWP Proj: 23308'
Page 1 of 12



REFERENCE WELLPATH IDENTIFICATION

Operator	EQT PRODUCTION COMPANY	Well	Elliott 13H (L-003935)
Field	Marion	API	47-049-02504-00-00
Facility	Elliot Pad	Wellbore	Elliott 13H (L-003935) AWB
Slot	Slot 13		

REPORT SETUP INFORMATION

Projection System	NAD27 / Lambert West Virginia SP, Northern Zone (4701), US feet	Software System	WellArchitect® 6.0
North Reference	Grid	User	Hilpthop
Scale	0.999942	Report Generated	8/9/2021 at 8:58:10 AM
Convergence at slot	0.56° West	Database	WA_MPL_EASTERNUS_Defn

WELLPATH LOCATION

	Local coordinates		Grid coordinates		Geographic coordinates	
	North[ft]	East[ft]	Easting[US ft]	Northing[US ft]	Latitude	Longitude
Slot Location	82.90	35.02	1751207.25	381990.45	39°32'43.5598"N	80°22'56.0975"W
Facility Reference Pt			1751172.23	381907.55	39°32'42.7371"N	80°22'56.5342"W
Field Reference Pt			1931053.01	433518.91	39°41'24.0000"N	79°44'42.0000"W

WELLPATH DATUM

Calculation method	Minimum curvature	Patterson 292 (RKB) to Facility Vertical Datum	1370.00ft
Horizontal Reference Pt	Slot	Patterson 292 (RKB) to Mean Sea Level	1370.00ft
Vertical Reference Pt	Patterson 292 (RKB)	Patterson 292 (RKB) to Ground Level at Slot (Slot 13)	28.00ft
MD Reference Pt	Patterson 292 (RKB)	Section Origin	N 0.00, E 0.00 ft
Field Vertical Reference	Mean Sea Level	Section Azimuth	336.72°



Actual Wellpath Report

Elliott 13H (L-003935) AWP Proj: 23308'
Page 2 of 12



REFERENCE WELLPATH IDENTIFICATION			
Operator	EQT PRODUCTION COMPANY	Well	Elliott 13H (L-003935)
Field	Marion	API	47-049-02504-00-00
Facility	Elliot Pad	Wellbore	Elliott 13H (L-003935) AWB
Slot	Slot 13		

WELLPATH DATA (263 stations) † = interpolated, ‡ = extrapolated station															
MD [ft]	Inclination [°]	Azimuth [°]	TVD [ft]	Vert Sect [ft]	North [ft]	East [ft]	Grid East [US ft]	Grid North [US ft]	Latitude	Longitude	Closure Dist [ft]	Closure Dir [°]	DLS [°/100ft]	Build Rate [°/100ft]	Turn Rate [°/100ft]
0.00†	0.000	207.210	0.00	0.00	0.00	0.00	1751207.25	381990.45	39°32'43.5598"N	80°22'56.0975"W	0.00	0.000	0.00	0.00	0.00
28.00	0.000	207.210	28.00	0.00	0.00	0.00	1751207.25	381990.45	39°32'43.5598"N	80°22'56.0975"W	0.00	0.000	0.00	0.00	0.00
115.00	0.230	207.210	115.00	-0.11	-0.16	-0.08	1751207.17	381990.29	39°32'43.5583"N	80°22'56.0985"W	0.17	207.210	0.26	0.26	0.00
215.00	0.240	202.220	215.00	-0.39	-0.53	-0.25	1751207.00	381989.92	39°32'43.5546"N	80°22'56.1006"W	0.58	205.423	0.02	0.01	-4.99
315.00	0.370	219.520	315.00	-0.68	-0.97	-0.54	1751206.71	381989.48	39°32'43.5502"N	80°22'56.1042"W	1.11	208.885	0.16	0.13	17.30
415.00	0.430	212.440	415.00	-1.04	-1.54	-0.94	1751206.31	381988.91	39°32'43.5445"N	80°22'56.1093"W	1.80	211.520	0.08	0.06	-7.08
515.00	0.510	202.030	514.99	-1.56	-2.27	-1.31	1751205.94	381988.18	39°32'43.5373"N	80°22'56.1139"W	2.62	210.045	0.12	0.08	-10.41
615.00	0.880	174.970	614.98	-2.61	-3.44	-1.41	1751205.84	381987.01	39°32'43.5257"N	80°22'56.1151"W	3.72	202.270	0.48	0.37	-27.06
715.00	0.330	179.310	714.98	-3.60	-4.50	-1.34	1751205.91	381985.95	39°32'43.5153"N	80°22'56.1140"W	4.69	196.588	0.55	-0.55	4.34
815.00	0.490	177.540	814.98	-4.27	-5.21	-1.32	1751205.93	381985.24	39°32'43.5082"N	80°22'56.1137"W	5.38	194.188	0.16	0.16	-1.77
890.00	0.670	169.760	889.97	-4.99	-5.96	-1.23	1751206.02	381984.49	39°32'43.5008"N	80°22'56.1124"W	6.09	191.615	0.26	0.24	-10.37
1049.00	0.360	198.310	1048.97	-6.27	-7.35	-1.22	1751206.03	381983.10	39°32'43.4870"N	80°22'56.1121"W	7.45	189.402	0.25	-0.19	17.96
1135.00	0.300	257.650	1134.96	-6.43	-7.66	-1.52	1751205.73	381982.79	39°32'43.4840"N	80°22'56.1160"W	7.81	191.244	0.38	-0.07	69.00
1221.00	1.000	299.060	1220.96	-5.80	-7.34	-2.40	1751204.85	381983.11	39°32'43.4870"N	80°22'56.1272"W	7.72	198.092	0.93	0.81	48.15
1308.00	1.960	294.450	1307.93	-4.09	-6.36	-4.42	1751202.83	381984.09	39°32'43.4966"N	80°22'56.1531"W	7.74	214.792	1.11	1.10	-5.30
1394.00	2.740	291.840	1393.86	-1.55	-4.98	-7.66	1751199.59	381985.47	39°32'43.5098"N	80°22'56.1947"W	9.14	236.968	0.92	0.91	-3.03
1481.00	3.420	284.500	1480.73	1.52	-3.56	-12.11	1751195.15	381986.89	39°32'43.5235"N	80°22'56.2516"W	12.62	253.616	0.90	0.78	-8.44
1567.00	3.710	289.570	1566.56	4.98	-1.98	-17.21	1751190.04	381988.47	39°32'43.5385"N	80°22'56.3169"W	17.32	263.421	0.50	0.34	5.90
1653.00	3.350	300.220	1652.40	8.89	0.21	-22.00	1751185.25	381990.66	39°32'43.5598"N	80°22'56.3784"W	22.00	270.551	0.87	-0.42	12.38
1739.00	3.670	320.860	1738.24	13.56	3.61	-25.91	1751181.34	381994.06	39°32'43.5930"N	80°22'56.4287"W	26.16	277.934	1.51	0.37	24.00
1825.00	3.560	327.100	1824.07	18.84	7.99	-29.10	1751178.15	381998.44	39°32'43.6359"N	80°22'56.4700"W	30.18	285.350	0.47	-0.13	7.26
1912.00	2.510	325.640	1910.95	23.37	11.83	-31.64	1751175.61	382002.28	39°32'43.6737"N	80°22'56.5029"W	33.78	290.497	1.21	-1.21	-1.68
1997.00	1.700	343.680	1995.89	26.45	14.58	-33.05	1751174.20	382005.02	39°32'43.7007"N	80°22'56.5212"W	36.12	293.799	1.22	-0.95	21.22
2084.00	1.440	13.480	2082.86	28.61	16.88	-33.16	1751174.10	382007.33	39°32'43.7234"N	80°22'56.5228"W	37.20	296.977	0.97	-0.30	34.25
2170.00	2.020	5.470	2168.82	30.80	19.44	-32.76	1751174.49	382009.89	39°32'43.7487"N	80°22'56.5181"W	38.09	300.681	0.73	0.67	-9.31
2256.00	3.140	355.500	2254.73	34.36	23.29	-32.80	1751174.45	382013.74	39°32'43.7868"N	80°22'56.5191"W	40.23	305.382	1.40	1.30	-11.59
2342.00	4.080	350.780	2340.56	39.56	28.66	-33.47	1751173.78	382019.11	39°32'43.8398"N	80°22'56.5284"W	44.07	310.571	1.15	1.09	-5.49
2429.00	4.110	351.290	2427.34	45.58	34.80	-34.44	1751172.81	382025.25	39°32'43.9004"N	80°22'56.5415"W	48.96	315.295	0.05	0.03	0.59
2456.00	4.100	354.820	2454.27	47.43	36.72	-34.68	1751172.58	382027.16	39°32'43.9193"N	80°22'56.5447"W	50.50	316.637	0.94	-0.04	13.07
2549.00	3.960	358.610	2547.04	53.57	43.24	-35.05	1751172.20	382033.68	39°32'43.9837"N	80°22'56.5504"W	55.66	320.967	0.32	-0.15	4.08



Actual Wellpath Report

Elliott 13H (L-003935) AWP Proj: 23308'

Page 3 of 12



REFERENCE WELLPATH IDENTIFICATION			
Operator	EQT PRODUCTION COMPANY	Well	Elliott 13H (L-003935)
Field	Marion	API	47-049-02504-00-00
Facility	Elliot Pad	Wellbore	Elliott 13H (L-003935) AWB
Slot	Slot 13		

WELLPATH DATA (263 stations)

MD [ft]	Inclination [°]	Azimuth [°]	TVD [ft]	Vert Sect [ft]	North [ft]	East [ft]	Grid East [US ft]	Grid North [US ft]	Latitude	Longitude	Closure Dist [ft]	Closure Dir [°]	DLS [°/100ft]	Build Rate [°/100ft]	Turn Rate [°/100ft]
2636.00	2.750	346.220	2633.89	58.42	48.27	-35.62	1751171.63	382038.71	39°32'44.0334"N	80°22'56.5583"W	59.99	323.571	1.61	-1.39	-14.24
2722.00	2.550	335.030	2719.80	62.36	52.01	-36.92	1751170.33	382042.45	39°32'44.0702"N	80°22'56.5753"W	63.78	324.626	0.64	-0.23	-13.01
2808.00	2.080	359.260	2805.73	65.72	55.30	-37.75	1751169.50	382045.75	39°32'44.1027"N	80°22'56.5863"W	66.96	325.681	1.25	-0.55	28.17
2894.00	2.160	2.590	2891.67	68.62	58.48	-37.70	1751169.55	382048.93	39°32'44.1341"N	80°22'56.5860"W	69.58	327.193	0.17	0.09	3.87
2938.00	1.860	15.470	2935.65	69.92	60.00	-37.47	1751169.78	382050.44	39°32'44.1491"N	80°22'56.5833"W	70.74	328.014	1.23	-0.68	29.27
2981.00	2.500	30.620	2978.61	71.02	61.48	-36.81	1751170.45	382051.92	39°32'44.1638"N	80°22'56.5750"W	71.65	329.091	1.99	1.49	35.23
3024.00	3.560	50.990	3021.55	71.93	63.12	-35.29	1751171.96	382053.57	39°32'44.1802"N	80°22'56.5559"W	72.32	330.792	3.48	2.47	47.37
3067.00	4.470	67.050	3064.45	72.28	64.62	-32.71	1751174.54	382055.06	39°32'44.1953"N	80°22'56.5231"W	72.43	333.151	3.34	2.12	37.35
3110.00	5.910	66.890	3107.27	72.27	66.14	-29.13	1751178.12	382056.59	39°32'44.2106"N	80°22'56.4776"W	72.27	336.229	3.35	3.35	-0.37
3153.00	7.310	72.920	3149.99	71.97	67.81	-24.48	1751182.77	382058.26	39°32'44.2276"N	80°22'56.4185"W	72.10	340.151	3.63	3.26	14.02
3196.00	8.410	71.880	3192.58	71.39	69.59	-18.88	1751188.38	382060.04	39°32'44.2458"N	80°22'56.3472"W	72.11	344.825	2.58	2.56	-2.42
3239.00	8.440	72.380	3235.12	70.79	71.53	-12.88	1751194.37	382061.97	39°32'44.2655"N	80°22'56.2709"W	72.68	349.792	0.18	0.07	1.16
3282.00	9.260	75.380	3277.61	69.96	73.36	-6.52	1751200.73	382063.80	39°32'44.2842"N	80°22'56.1900"W	73.65	354.917	2.19	1.91	6.98
3325.00	9.400	76.770	3320.04	68.83	75.03	0.24	1751207.49	382065.48	39°32'44.3014"N	80°22'56.1038"W	75.03	0.184	0.62	0.33	3.23
3369.00	9.070	75.010	3363.47	67.70	76.75	7.09	1751214.34	382067.20	39°32'44.3190"N	80°22'56.0166"W	77.08	5.277	0.99	-0.75	-4.00
3411.00	9.670	73.760	3404.91	66.79	78.59	13.67	1751220.92	382069.04	39°32'44.3379"N	80°22'55.9328"W	79.78	9.870	1.51	1.43	-2.98
3454.00	9.740	72.890	3447.29	65.96	80.67	20.62	1751227.87	382071.12	39°32'44.3591"N	80°22'55.8444"W	83.27	14.336	0.38	0.16	-2.02
3497.00	10.480	72.430	3489.62	65.18	82.93	27.82	1751235.07	382073.37	39°32'44.3821"N	80°22'55.7528"W	87.47	18.547	1.73	1.72	-1.07
3541.00	11.720	73.020	3532.80	64.29	85.44	35.91	1751243.16	382075.88	39°32'44.4077"N	80°22'55.6498"W	92.68	22.798	2.83	2.82	1.34
3584.00	13.180	73.190	3574.79	63.26	88.13	44.78	1751252.03	382078.58	39°32'44.4352"N	80°22'55.5369"W	98.86	26.936	3.40	3.40	0.40
3627.00	14.250	73.760	3616.56	62.06	91.03	54.56	1751261.80	382081.47	39°32'44.4647"N	80°22'55.4125"W	106.13	30.935	2.51	2.49	1.33
3670.00	15.720	74.070	3658.10	60.66	94.11	65.24	1751272.49	382084.55	39°32'44.4962"N	80°22'55.2766"W	114.51	34.731	3.42	3.42	0.72
3713.00	16.750	74.110	3699.38	59.12	97.40	76.80	1751284.05	382087.85	39°32'44.5299"N	80°22'55.1294"W	124.04	38.255	2.40	2.40	0.09
3756.00	17.860	74.850	3740.43	57.39	100.82	89.12	1751296.37	382091.27	39°32'44.5649"N	80°22'54.9725"W	134.57	41.476	2.63	2.58	1.72
3799.00	19.490	74.680	3781.17	55.47	104.44	102.41	1751309.65	382094.89	39°32'44.6019"N	80°22'54.8034"W	146.27	44.437	3.79	3.79	-0.40
3843.00	20.980	73.930	3822.45	53.46	108.56	117.06	1751324.30	382099.01	39°32'44.6441"N	80°22'54.6169"W	159.65	47.156	3.44	3.39	-1.70
3886.00	21.880	74.730	3862.48	51.38	112.80	132.19	1751339.43	382103.25	39°32'44.6875"N	80°22'54.4244"W	173.77	49.523	2.20	2.09	1.86
3929.00	23.010	74.050	3902.22	49.19	117.22	148.00	1751355.24	382107.67	39°32'44.7327"N	80°22'54.2231"W	188.80	51.618	2.70	2.63	-1.58
4015.00	23.890	71.990	3981.12	45.44	127.23	180.72	1751387.96	382117.67	39°32'44.8347"N	80°22'53.8067"W	221.01	54.854	1.40	1.02	-2.40
4101.00	23.580	70.520	4059.85	42.70	138.35	213.50	1751420.73	382128.79	39°32'44.9478"N	80°22'53.3897"W	254.40	57.056	0.78	-0.36	-1.71



Actual Wellpath Report

Elliott 13H (L-003935) AWP Proj: 23308'

Page 4 of 12



REFERENCE WELLPATH IDENTIFICATION				
Operator	EQT PRODUCTION COMPANY		Well	Elliott 13H (L-003935)
Field	Marion		API	47-049-02504-00-00
Facility	Elliot Pad		Wellbore	Elliott 13H (L-003935) AWB
Slot	Slot 13			

WELLPATH DATA (263 stations)

MD [ft]	Inclination [°]	Azimuth [°]	TVD [ft]	Vert Sect [ft]	North [ft]	East [ft]	Grid East [US ft]	Grid North [US ft]	Latitude	Longitude	Closure Dist [ft]	Closure Dir [°]	DLS [°/100ft]	Build Rate [°/100ft]	Turn Rate [°/100ft]
4187.00	22.560	71.570	4138.97	40.17	149.30	245.37	1751452.60	382139.74	39°32'45.0591"N	80°22'52.9842"W	287.22	58.680	1.28	-1.19	1.22
4274.00	22.510	72.970	4219.32	36.95	159.45	277.12	1751484.36	382149.89	39°32'45.1626"N	80°22'52.5802"W	319.72	60.084	0.62	-0.06	1.61
4360.00	22.870	75.020	4298.67	32.74	168.59	309.01	1751516.24	382159.03	39°32'45.2560"N	80°22'52.1743"W	352.01	61.383	1.01	0.42	2.38
4446.00	23.180	75.750	4377.82	27.67	177.08	341.56	1751548.78	382167.52	39°32'45.3430"N	80°22'51.7599"W	384.73	62.595	0.49	0.36	0.85
4533.00	23.190	75.910	4457.79	22.25	185.47	374.77	1751581.99	382175.90	39°32'45.4291"N	80°22'51.3370"W	418.15	63.670	0.07	0.01	0.18
4619.00	23.540	73.420	4536.74	17.54	194.49	407.65	1751614.87	382184.93	39°32'45.5214"N	80°22'50.9184"W	451.67	64.494	1.22	0.41	-2.90
4705.00	22.120	72.290	4616.00	13.97	204.32	439.53	1751646.76	382194.75	39°32'45.6217"N	80°22'50.5127"W	484.70	65.069	1.73	-1.65	-1.31
4791.00	21.740	71.430	4695.78	11.09	214.31	470.06	1751677.28	382204.75	39°32'45.7234"N	80°22'50.1243"W	516.61	65.490	0.58	-0.44	-1.00
4878.00	21.760	71.940	4776.59	8.30	224.44	500.66	1751707.88	382214.88	39°32'45.8265"N	80°22'49.7349"W	548.67	65.854	0.22	0.02	0.59
4964.00	21.940	72.130	4856.41	5.33	234.32	531.11	1751738.33	382224.75	39°32'45.9270"N	80°22'49.3475"W	580.50	66.194	0.22	0.21	0.22
5042.00	22.130	72.120	4928.71	2.57	243.30	558.96	1751766.18	382233.73	39°32'46.0185"N	80°22'48.9931"W	609.61	66.478	0.24	0.24	-0.01
5128.00	22.460	75.300	5008.28	-1.40	252.44	590.27	1751797.48	382242.87	39°32'46.1119"N	80°22'48.5946"W	641.98	66.845	1.45	0.38	3.70
5202.00	22.810	76.580	5076.59	-5.97	259.36	617.89	1751825.11	382249.79	39°32'46.1829"N	80°22'48.2429"W	670.12	67.230	0.82	0.47	1.73
5297.00	23.080	79.590	5164.07	-13.27	266.99	654.12	1751861.33	382257.43	39°32'46.2619"N	80°22'47.7814"W	706.51	67.796	1.27	0.28	3.17
5392.00	23.220	78.120	5251.42	-21.12	274.21	690.76	1751897.97	382264.65	39°32'46.3368"N	80°22'47.3146"W	743.20	68.348	0.63	0.15	-1.55
5487.00	23.780	77.050	5338.54	-28.25	282.36	727.75	1751934.96	382272.80	39°32'46.4209"N	80°22'46.8434"W	780.61	68.794	0.74	0.59	-1.13
5582.00	24.930	75.740	5425.09	-34.83	291.59	765.83	1751973.03	382282.02	39°32'46.5157"N	80°22'46.3586"W	819.46	69.156	1.34	1.21	-1.38
5678.00	25.520	75.600	5511.93	-41.19	301.71	805.47	1752012.67	382292.15	39°32'46.6196"N	80°22'45.8539"W	860.12	69.465	0.62	0.61	-0.15
5773.00	24.970	73.730	5597.86	-46.80	312.42	844.54	1752051.74	382302.85	39°32'46.7292"N	80°22'45.3565"W	900.47	69.699	1.02	-0.58	-1.97
5868.00	24.640	73.590	5684.10	-51.61	323.63	882.78	1752089.98	382314.06	39°32'46.8438"N	80°22'44.8697"W	940.24	69.867	0.35	-0.35	-0.15
5964.00	23.630	72.780	5771.70	-56.04	334.98	920.36	1752127.55	382325.41	39°32'46.9596"N	80°22'44.3915"W	979.42	70.000	1.11	-1.05	-0.84
6059.00	24.180	71.410	5858.56	-59.64	346.82	956.99	1752164.18	382337.25	39°32'47.0801"N	80°22'43.9254"W	1017.89	70.079	0.82	0.58	-1.44
6154.00	24.590	73.970	5945.08	-63.72	358.48	994.42	1752201.61	382348.91	39°32'47.1990"N	80°22'43.4490"W	1057.07	70.176	1.19	0.43	2.69
6247.00	23.570	73.880	6029.99	-68.48	368.99	1030.89	1752238.07	382359.42	39°32'47.3063"N	80°22'42.9849"W	1094.93	70.306	1.10	-1.10	-0.10
6340.00	22.420	73.780	6115.60	-72.98	379.11	1065.78	1752272.96	382369.53	39°32'47.4097"N	80°22'42.5407"W	1131.20	70.419	1.24	-1.24	-0.11
6436.00	22.250	76.290	6204.40	-78.25	388.53	1101.02	1752308.20	382378.95	39°32'47.5062"N	80°22'42.0921"W	1167.56	70.563	1.01	-0.18	2.61
6531.00	22.730	75.530	6292.17	-84.05	397.38	1136.26	1752343.44	382387.80	39°32'47.5970"N	80°22'41.6434"W	1203.74	70.724	0.59	0.51	-0.80
6626.00	23.340	76.040	6379.60	-89.91	406.50	1172.29	1752379.47	382396.93	39°32'47.6907"N	80°22'41.1845"W	1240.77	70.876	0.68	0.64	0.54
6721.00	23.030	75.490	6466.92	-95.79	415.70	1208.55	1752415.72	382406.12	39°32'47.7851"N	80°22'40.7229"W	1278.04	71.019	0.40	-0.33	-0.58
6817.00	23.080	74.470	6555.26	-101.19	425.44	1244.86	1752452.03	382415.87	39°32'47.8849"N	80°22'40.2607"W	1315.55	71.132	0.42	0.05	-1.06



Actual Wellpath Report

Elliott 13H (L-003935) AWP Proj: 23308'
Page 5 of 12



REFERENCE WELLPATH IDENTIFICATION

Operator	EQT PRODUCTION COMPANY	Well	Elliott 13H (L-003935)
Field	Marion	API	47-049-02504-00-00
Facility	Elliott Pad	Wellbore	Elliott 13H (L-003935) AWB
Slot	Slot 13		

WELLPATH DATA (263 stations)

MD [ft]	Inclination [°]	Azimuth [°]	TVD [ft]	Vert Sect [ft]	North [ft]	East [ft]	Grid East [US ft]	Grid North [US ft]	Latitude	Longitude	Closure Dist [ft]	Closure Dir [°]	DLS [°/100ft]	Build Rate [°/100ft]	Turn Rate [°/100ft]
6910.00	24.610	76.640	6640.32	-106.99	434.80	1281.26	1752488.44	382425.22	39°32'47.9809"N	80°22'39.7971"W	1353.03	71.255	1.90	1.65	2.33
7005.00	26.170	77.460	6726.14	-114.30	443.92	1320.96	1752528.13	382434.34	39°32'48.0748"N	80°22'39.2915"W	1393.56	71.425	1.68	1.64	0.86
7100.00	26.280	77.350	6811.36	-122.09	453.07	1361.93	1752569.10	382443.49	39°32'48.1693"N	80°22'38.7697"W	1435.32	71.599	0.13	0.12	-0.12
7195.00	26.300	75.430	6896.54	-129.15	462.97	1402.82	1752609.99	382453.39	39°32'48.2710"N	80°22'38.2490"W	1477.24	71.736	0.90	0.02	-2.02
7288.00	25.330	72.480	6980.26	-134.27	474.14	1441.74	1752648.90	382464.57	39°32'48.3852"N	80°22'37.7536"W	1517.70	71.796	1.73	-1.04	-3.17
7380.00	24.660	68.950	7063.65	-136.99	486.96	1478.42	1752685.58	382477.38	39°32'48.5154"N	80°22'37.2870"W	1556.55	71.769	1.78	-0.73	-3.84
7460.00	24.320	65.530	7136.45	-137.30	499.78	1508.99	1752716.15	382490.20	39°32'48.6451"N	80°22'36.8984"W	1589.60	71.675	1.82	-0.43	-4.28
7555.00	22.860	53.700	7223.56	-132.73	518.82	1541.68	1752748.84	382509.24	39°32'48.8364"N	80°22'36.4834"W	1626.64	71.400	5.21	-1.54	-12.45
7650.00	20.960	23.800	7311.97	-116.95	545.38	1563.48	1752770.64	382535.79	39°32'49.1009"N	80°22'36.2084"W	1655.87	70.770	11.79	-2.00	-31.47
7745.00	24.670	15.980	7399.54	-90.02	580.00	1575.81	1752782.96	382570.42	39°32'49.4443"N	80°22'36.0555"W	1679.16	69.793	5.04	3.91	-8.23
7840.00	31.650	11.090	7483.25	-54.04	623.58	1586.07	1752793.23	382613.99	39°32'49.8760"N	80°22'35.9298"W	1704.25	68.537	7.73	7.35	-5.15
7935.00	39.510	1.120	7560.52	-5.83	678.39	1591.47	1752798.62	382668.80	39°32'50.4182"N	80°22'35.8678"W	1730.02	66.913	10.26	8.27	-10.49
8030.00	48.550	352.990	7628.81	56.04	744.13	1587.70	1752794.86	382734.53	39°32'51.0675"N	80°22'35.9240"W	1753.43	64.888	11.21	9.52	-8.56
8125.00	53.800	348.160	7688.37	127.87	817.06	1575.48	1752782.64	382807.46	39°32'51.7871"N	80°22'36.0891"W	1774.75	62.588	6.80	5.53	-5.08
8220.00	58.970	340.420	7741.00	206.19	893.05	1553.94	1752761.10	382883.45	39°32'52.5360"N	80°22'36.3736"W	1792.28	60.114	8.69	5.44	-8.15
8316.00	67.030	335.410	7784.57	291.60	972.16	1521.70	1752728.85	382962.55	39°32'53.3147"N	80°22'36.7950"W	1805.73	57.427	9.59	8.40	-5.22
8411.00	75.570	333.600	7815.00	381.43	1053.29	1482.97	1752690.13	383043.68	39°32'54.1128"N	80°22'37.2995"W	1818.96	54.615	9.17	8.99	-1.91
8506.00	87.050	335.200	7829.33	475.10	1137.84	1442.48	1752649.64	383128.23	39°32'54.9445"N	80°22'37.8269"W	1837.24	51.733	12.20	12.08	1.68
8601.00	88.550	338.110	7832.98	570.02	1224.99	1404.87	1752612.03	383215.37	39°32'55.8021"N	80°22'38.3178"W	1863.94	48.913	3.44	1.58	3.06
8697.00	86.490	331.040	7837.14	665.80	1311.55	1363.72	1752570.89	383301.93	39°32'56.6537"N	80°22'38.8538"W	1892.07	46.117	7.66	-2.15	-7.36
8792.00	86.770	328.100	7842.72	759.88	1393.32	1315.70	1752522.87	383383.68	39°32'57.4571"N	80°22'39.4771"W	1916.35	43.359	3.10	0.29	-3.09
8887.00	89.510	328.700	7845.81	853.83	1474.18	1265.95	1752473.12	383464.54	39°32'58.2514"N	80°22'40.1222"W	1943.15	40.654	2.95	2.88	0.63
8982.00	88.310	326.470	7847.62	947.60	1554.36	1215.04	1752422.21	383544.71	39°32'59.0389"N	80°22'40.7821"W	1972.90	38.015	2.67	-1.26	-2.35
9077.00	89.630	327.400	7849.32	1041.20	1633.96	1163.22	1752370.40	383624.31	39°32'59.8205"N	80°22'41.4536"W	2005.71	35.447	1.70	1.39	0.98
9172.00	90.920	330.230	7848.87	1135.28	1715.22	1114.03	1752321.21	383705.57	39°33'0.6189"N	80°22'42.0916"W	2045.25	33.004	3.27	1.36	2.98
9267.00	89.320	325.960	7848.67	1229.18	1795.85	1063.84	1752271.02	383786.19	39°33'1.4108"N	80°22'42.7424"W	2087.30	30.642	4.80	-1.68	-4.49
9362.00	90.030	328.010	7849.21	1322.81	1875.50	1012.08	1752219.27	383865.84	39°33'2.1930"N	80°22'43.4130"W	2131.15	28.353	2.28	0.75	2.16
9458.00	89.780	329.200	7849.37	1417.84	1957.44	962.07	1752169.26	383947.77	39°33'2.9980"N	80°22'44.0617"W	2181.09	26.174	1.27	-0.26	1.24
9553.00	88.950	328.060	7850.42	1511.89	2038.55	912.62	1752119.82	384028.88	39°33'3.7948"N	80°22'44.7030"W	2233.51	24.117	1.48	-0.87	-1.20
9648.00	88.460	328.620	7852.57	1605.85	2119.39	862.77	1752069.97	384109.71	39°33'4.5889"N	80°22'45.3495"W	2288.27	22.150	0.78	-0.52	0.59



Actual Wellpath Report

Elliott 13H (L-003935) AWP Proj: 23308'
Page 6 of 12



REFERENCE WELLPATH IDENTIFICATION

Operator	EQT PRODUCTION COMPANY	Well	Elliott 13H (L-003935)
Field	Marion	API	47-049-02504-00-00
Facility	Elliot Pad	Wellbore	Elliott 13H (L-003935) AWB
Slot	Slot 13		

WELLPATH DATA (263 stations)

MD [ft]	Inclination [°]	Azimuth [°]	TVD [ft]	Vert Sect [ft]	North [ft]	East [ft]	Grid East [US ft]	Grid North [US ft]	Latitude	Longitude	Closure Dist [ft]	Closure Dir [°]	DLS [°/100ft]	Build Rate [°/100ft]	Turn Rate [°/100ft]
9743.00	88.280	327.840	7855.27	1699.77	2200.12	812.77	1752019.97	384190.44	39°33'5.3820"N	80°22'45.9978"W	2345.45	20.275	0.84	-0.19	-0.82
9839.00	89.450	329.700	7857.17	1794.82	2282.19	763.01	1751970.22	384272.50	39°33'6.1882"N	80°22'46.6433"W	2406.36	18.487	2.29	1.22	1.94
9934.00	89.940	329.770	7857.68	1889.12	2364.24	715.13	1751922.34	384354.55	39°33'6.9945"N	80°22'47.2648"W	2470.03	16.829	0.52	0.52	0.07
10029.00	89.630	330.020	7858.03	1983.44	2446.43	667.48	1751874.69	384436.73	39°33'7.8021"N	80°22'47.8833"W	2535.85	15.261	0.42	-0.33	0.26
10124.00	89.780	330.110	7858.52	2077.80	2528.75	620.08	1751827.29	384519.05	39°33'8.6111"N	80°22'48.4988"W	2603.67	13.778	0.18	0.16	0.09
10219.00	89.750	329.530	7858.91	2172.11	2610.87	572.32	1751779.53	384601.16	39°33'9.4180"N	80°22'49.1187"W	2672.86	12.364	0.61	-0.03	-0.61
10314.00	89.690	329.700	7859.38	2266.38	2692.82	524.27	1751731.49	384683.11	39°33'10.2233"N	80°22'49.7424"W	2743.38	11.017	0.19	-0.06	0.18
10409.00	89.910	330.010	7859.71	2360.70	2774.97	476.56	1751683.78	384765.26	39°33'11.0305"N	80°22'50.3617"W	2815.60	9.745	0.40	0.23	0.33
10504.00	89.720	329.970	7860.01	2455.04	2857.24	429.05	1751636.27	384847.52	39°33'11.8389"N	80°22'50.9786"W	2889.27	8.540	0.20	-0.20	-0.04
10599.00	90.030	329.620	7860.22	2549.35	2939.34	381.25	1751588.48	384929.61	39°33'12.6457"N	80°22'51.5990"W	2963.96	7.390	0.49	0.33	-0.37
10694.00	89.170	329.250	7860.88	2643.58	3021.14	332.95	1751540.18	385011.40	39°33'13.4494"N	80°22'52.2259"W	3039.43	6.289	0.99	-0.91	-0.39
10789.00	89.630	329.830	7861.88	2737.83	3103.02	284.79	1751492.02	385093.28	39°33'14.2540"N	80°22'52.8509"W	3116.06	5.244	0.78	0.48	0.61
10884.00	89.660	329.640	7862.47	2832.12	3185.07	236.91	1751444.15	385175.33	39°33'15.0602"N	80°22'53.4724"W	3193.87	4.254	0.20	0.03	-0.20
10979.00	89.450	329.270	7863.21	2926.36	3266.88	188.63	1751395.87	385257.14	39°33'15.8641"N	80°22'54.0990"W	3272.33	3.305	0.45	-0.22	-0.39
11075.00	89.080	330.110	7864.44	3021.63	3349.75	140.19	1751347.43	385340.00	39°33'16.6784"N	80°22'54.7278"W	3352.69	2.396	0.96	-0.39	0.88
11170.00	90.030	331.120	7865.17	3116.08	3432.53	93.58	1751300.82	385422.77	39°33'17.4919"N	80°22'55.3333"W	3433.80	1.562	1.46	1.00	1.06
11265.00	89.820	330.410	7865.30	3210.57	3515.43	47.18	1751254.43	385505.66	39°33'18.3066"N	80°22'55.9360"W	3515.74	0.769	0.78	-0.22	-0.75
11360.00	90.250	330.310	7865.24	3304.98	3597.99	0.20	1751207.45	385588.23	39°33'19.1181"N	80°22'56.5461"W	3597.99	0.003	0.46	0.45	-0.11
11455.00	89.260	328.110	7865.65	3399.16	3679.60	-48.43	1751158.82	385669.83	39°33'19.9198"N	80°22'57.1771"W	3679.92	359.246	2.54	-1.04	-2.32
11550.00	89.720	327.860	7866.49	3493.06	3760.15	-98.79	1751108.47	385750.37	39°33'20.7110"N	80°22'57.8301"W	3761.44	358.495	0.55	0.48	-0.26
11645.00	90.710	330.650	7866.14	3587.24	3841.78	-147.35	1751059.91	385832.00	39°33'21.5131"N	80°22'58.4603"W	3844.61	357.804	3.12	1.04	2.94
11740.00	89.570	325.300	7865.90	3681.10	3922.30	-197.71	1751009.55	385912.51	39°33'22.3039"N	80°22'59.1133"W	3927.27	357.114	5.76	-1.20	-5.63
11836.00	90.520	332.230	7865.83	3776.12	4004.33	-247.46	1750959.81	385994.54	39°33'23.1098"N	80°22'59.7587"W	4011.97	356.464	7.29	0.99	7.22
11931.00	90.060	330.090	7865.35	3870.66	4087.54	-293.28	1750913.99	386077.74	39°33'23.9277"N	80°23'0.3542"W	4098.05	355.896	2.30	-0.48	-2.25
12026.00	89.200	328.120	7865.96	3964.82	4169.05	-342.06	1750865.21	386159.25	39°33'24.7285"N	80°23'0.9871"W	4183.06	355.310	2.26	-0.91	-2.07
12121.00	89.170	328.750	7867.31	4058.82	4249.99	-391.78	1750815.49	386240.18	39°33'25.5235"N	80°23'1.6321"W	4268.01	354.733	0.66	-0.03	0.66
12216.00	89.780	330.190	7868.18	4153.05	4331.81	-440.04	1750767.24	386322.00	39°33'26.3275"N	80°23'2.2584"W	4354.11	354.200	1.65	0.64	1.52
12311.00	89.910	331.760	7868.44	4247.57	4414.88	-486.13	1750721.15	386405.06	39°33'27.1439"N	80°23'2.8573"W	4441.56	353.716	1.66	0.14	1.65
12406.00	89.200	330.960	7869.18	4342.15	4498.25	-531.66	1750675.62	386488.43	39°33'27.9635"N	80°23'3.4490"W	4529.56	353.259	1.13	-0.75	-0.84
12501.00	89.880	331.830	7869.94	4436.73	4581.65	-577.14	1750630.15	386571.83	39°33'28.7833"N	80°23'4.0401"W	4617.86	352.820	1.16	0.72	0.92



Actual Wellpath Report

Elliott 13H (L-003935) AWP Proj: 23308'
Page 7 of 12



REFERENCE WELLPATH IDENTIFICATION			
Operator	EQT PRODUCTION COMPANY	Well	Elliott 13H (L-003935)
Field	Marion	API	47-049-02504-00-00
Facility	Elliott Pad	Wellbore	Elliott 13H (L-003935) AWB
Slot	Slot 13		

WELLPATH DATA (263 stations)															
MD [ft]	Inclination [°]	Azimuth [°]	TVD [ft]	Vert Sect [ft]	North [ft]	East [ft]	Grid East [US ft]	Grid North [US ft]	Latitude	Longitude	Closure Dist [ft]	Closure Dir [°]	DLS [°/100ft]	Build Rate [°/100ft]	Turn Rate [°/100ft]
12596.00	89.020	330.820	7870.85	4531.31	4665.00	-622.72	1750584.57	386655.16	39°33'29.6025"N	80°23'4.6326"W	4706.37	352.397	1.40	-0.91	-1.06
12691.00	90.090	331.550	7871.59	4625.86	4748.23	-668.51	1750538.78	386738.39	39°33'30.4206"N	80°23'5.2276"W	4795.06	351.986	1.36	1.13	0.77
12786.00	90.060	331.610	7871.47	4720.48	4831.78	-713.72	1750493.57	386821.94	39°33'31.2419"N	80°23'5.8153"W	4884.21	351.597	0.07	-0.03	0.06
12881.00	90.220	331.960	7871.23	4815.12	4915.49	-758.63	1750448.66	386905.64	39°33'32.0649"N	80°23'6.3992"W	4973.69	351.226	0.41	0.17	0.37
12976.00	89.850	331.530	7871.18	4909.77	4999.17	-803.61	1750403.69	386989.32	39°33'32.8875"N	80°23'6.9839"W	5063.35	350.868	0.60	-0.39	-0.45
13071.00	89.970	331.430	7871.33	5004.37	5082.64	-848.97	1750358.34	387072.79	39°33'33.7080"N	80°23'7.5735"W	5153.06	350.517	0.16	0.13	-0.11
13166.00	89.050	329.460	7872.14	5098.79	5165.27	-895.82	1750311.48	387155.41	39°33'34.5200"N	80°23'8.1821"W	5242.38	350.161	2.29	-0.97	-2.07
13260.00	90.680	330.190	7872.36	5192.11	5246.53	-943.07	1750264.24	387236.67	39°33'35.3185"N	80°23'8.7956"W	5330.62	349.810	1.90	1.73	0.78
13355.00	90.280	331.510	7871.56	5286.60	5329.50	-989.34	1750217.97	387319.62	39°33'36.1339"N	80°23'9.3968"W	5420.55	349.484	1.45	-0.42	1.39
13450.00	89.510	329.110	7871.74	5381.00	5412.02	-1036.39	1750170.92	387402.14	39°33'36.9449"N	80°23'10.0078"W	5510.36	349.159	2.65	-0.81	-2.53
13544.00	90.120	330.240	7872.04	5474.29	5493.15	-1083.85	1750123.47	387483.27	39°33'37.7421"N	80°23'10.6240"W	5599.06	348.838	1.37	0.65	1.20
13639.00	90.180	330.180	7871.79	5568.68	5575.60	-1131.05	1750076.27	387565.71	39°33'38.5523"N	80°23'11.2370"W	5689.16	348.533	0.09	0.06	-0.06
13735.00	90.030	330.890	7871.62	5664.12	5659.18	-1178.27	1750029.05	387649.29	39°33'39.3737"N	80°23'11.8504"W	5780.54	348.239	0.76	-0.16	0.74
13830.00	89.570	329.770	7871.95	5758.52	5741.72	-1225.29	1749982.03	387731.83	39°33'40.1849"N	80°23'12.4612"W	5871.01	347.954	1.27	-0.48	-1.18
13926.00	89.600	330.180	7872.64	5853.86	5824.84	-1273.33	1749934.00	387814.94	39°33'41.0016"N	80°23'13.0849"W	5962.39	347.669	0.43	0.03	0.43
14021.00	90.180	331.180	7872.83	5948.33	5907.67	-1319.85	1749887.48	387897.76	39°33'41.8156"N	80°23'13.6893"W	6053.31	347.406	1.22	0.61	1.05
14116.00	90.370	331.780	7872.37	6042.93	5991.14	-1365.21	1749842.13	387981.23	39°33'42.6361"N	80°23'14.2789"W	6144.72	347.163	0.66	0.20	0.63
14211.00	89.880	329.340	7872.16	6137.37	6073.86	-1411.89	1749795.44	388063.95	39°33'43.4491"N	80°23'14.8855"W	6235.81	346.914	2.62	-0.52	-2.57
14306.00	90.220	330.020	7872.08	6231.66	6155.87	-1459.85	1749747.48	388145.95	39°33'44.2549"N	80°23'15.5081"W	6326.60	346.659	0.80	0.36	0.72
14401.00	89.970	328.500	7871.92	6325.85	6237.52	-1508.41	1749698.93	388227.59	39°33'45.0570"N	80°23'16.1384"W	6417.32	346.405	1.62	-0.26	-1.60
14496.00	89.600	329.270	7872.28	6419.96	6318.85	-1557.50	1749649.84	388308.92	39°33'45.8560"N	80°23'16.7754"W	6507.97	346.153	0.90	-0.39	0.81
14591.00	90.090	330.100	7872.54	6514.24	6400.86	-1605.45	1749601.89	388390.92	39°33'46.6618"N	80°23'17.3980"W	6599.13	345.920	1.01	0.52	0.87
14686.00	89.910	328.520	7872.54	6608.45	6482.55	-1653.94	1749553.41	388472.61	39°33'47.4644"N	80°23'18.0273"W	6690.22	345.687	1.67	-0.19	-1.66
14781.00	90.150	329.160	7872.49	6702.55	6563.84	-1703.09	1749504.26	388553.90	39°33'48.2630"N	80°23'18.6652"W	6781.19	345.454	0.72	0.25	0.67
14876.00	90.620	330.390	7871.85	6796.85	6645.93	-1750.91	1749456.44	388635.98	39°33'49.0695"N	80°23'19.2861"W	6872.70	345.240	1.39	0.49	1.29
14972.00	90.030	329.900	7871.30	6892.22	6729.18	-1798.70	1749408.66	388719.23	39°33'49.8877"N	80°23'19.9068"W	6965.43	345.035	0.80	-0.61	-0.51
15067.00	89.880	329.570	7871.38	6986.51	6811.24	-1846.58	1749360.78	388801.27	39°33'50.6939"N	80°23'20.5285"W	7057.11	344.831	0.38	-0.16	-0.35
15162.00	89.940	329.660	7871.53	7080.78	6893.19	-1894.63	1749312.73	388883.22	39°33'51.4991"N	80°23'21.1524"W	7148.82	344.631	0.11	0.06	0.09
15257.00	89.820	330.320	7871.73	7175.12	6975.45	-1942.15	1749265.22	388965.48	39°33'52.3075"N	80°23'21.7694"W	7240.78	344.441	0.71	-0.13	0.69
15352.00	89.820	329.530	7872.02	7269.46	7057.66	-1989.76	1749217.61	389047.68	39°33'53.1152"N	80°23'22.3877"W	7332.78	344.255	0.83	0.00	-0.83



Actual Wellpath Report

Elliott 13H (L-003935) AWP Proj: 23308'
Page 8 of 12



REFERENCE WELLPATH IDENTIFICATION			
Operator	EQT PRODUCTION COMPANY	Well	Elliott 13H (L-003935)
Field	Marion	API	47-049-02504-00-00
Facility	Elliot Pad	Wellbore	Elliott 13H (L-003935) AWB
Slot	Slot 13		

WELLPATH DATA (263 stations)															
MD [ft]	Inclination [°]	Azimuth [°]	TVD [ft]	Vert Sect [ft]	North [ft]	East [ft]	Grid East [US ft]	Grid North [US ft]	Latitude	Longitude	Closure Dist [ft]	Closure Dir [°]	DLS [°/100ft]	Build Rate [°/100ft]	Turn Rate [°/100ft]
15447.00	89.780	329.630	7872.36	7363.72	7139.58	-2037.86	1749169.52	389129.60	39°33'53.9202"N	80°23'23.0122"W	7424.72	344.070	0.11	-0.04	0.11
15542.00	90.280	330.020	7872.31	7458.03	7221.71	-2085.61	1749121.77	389211.72	39°33'54.7271"N	80°23'23.6323"W	7516.84	343.891	0.67	0.53	0.41
15637.00	89.690	329.200	7872.33	7552.30	7303.65	-2133.67	1749073.71	389293.66	39°33'55.5323"N	80°23'24.2562"W	7608.93	343.715	1.06	-0.62	-0.86
15732.00	90.180	329.460	7872.44	7646.51	7385.36	-2182.12	1749025.26	389375.37	39°33'56.3350"N	80°23'24.8853"W	7700.99	343.539	0.58	0.52	0.27
15827.00	89.880	328.930	7872.39	7740.69	7466.96	-2230.78	1748976.61	389456.96	39°33'57.1367"N	80°23'25.5168"W	7793.07	343.366	0.64	-0.32	-0.56
15922.00	90.400	329.930	7872.16	7834.92	7548.76	-2279.09	1748928.30	389538.75	39°33'57.9403"N	80°23'26.1441"W	7885.30	343.200	1.19	0.55	1.05
16017.00	90.150	329.790	7871.70	7929.24	7630.91	-2326.79	1748880.60	389620.90	39°33'58.7475"N	80°23'26.7635"W	7977.77	343.043	0.30	-0.26	-0.15
16112.00	89.720	328.980	7871.81	8023.46	7712.67	-2375.17	1748832.22	389702.65	39°33'59.5508"N	80°23'27.3916"W	8070.11	342.883	0.97	-0.45	-0.85
16207.00	89.850	329.060	7872.16	8117.60	7794.11	-2424.07	1748783.33	389784.09	39°34'0.3509"N	80°23'28.0263"W	8162.37	342.724	0.16	0.14	0.08
16302.00	89.910	329.750	7872.36	8211.83	7875.89	-2472.42	1748734.98	389865.86	39°34'1.1543"N	80°23'28.6540"W	8254.85	342.572	0.73	0.06	0.73
16397.00	90.220	329.520	7872.26	8306.11	7957.86	-2520.44	1748686.96	389947.83	39°34'1.9597"N	80°23'29.2776"W	8347.46	342.426	0.41	0.33	-0.24
16492.00	90.310	329.550	7871.82	8400.36	8039.74	-2568.61	1748638.79	390029.71	39°34'2.7642"N	80°23'29.9029"W	8440.09	342.282	0.10	0.09	0.03
16587.00	90.000	329.970	7871.56	8494.66	8121.81	-2616.45	1748590.95	390111.77	39°34'3.5706"N	80°23'30.5242"W	8532.86	342.144	0.55	-0.33	0.44
16682.00	90.150	329.930	7871.44	8588.99	8204.04	-2664.03	1748543.38	390194.00	39°34'4.3786"N	80°23'31.1421"W	8625.74	342.010	0.16	0.16	-0.04
16777.00	90.000	329.210	7871.31	8683.26	8285.96	-2712.14	1748495.27	390275.91	39°34'5.1834"N	80°23'31.7668"W	8718.53	341.876	0.77	-0.16	-0.76
16872.00	89.780	329.130	7871.49	8777.43	8367.53	-2760.83	1748446.59	390357.48	39°34'5.9848"N	80°23'32.3988"W	8811.23	341.740	0.25	-0.23	-0.08
16967.00	89.780	328.940	7871.86	8871.58	8448.99	-2809.71	1748397.71	390438.93	39°34'6.7851"N	80°23'33.0333"W	8903.93	341.605	0.20	0.00	-0.20
17062.00	90.090	329.420	7871.97	8965.76	8530.58	-2858.38	1748349.04	390520.51	39°34'7.5866"N	80°23'33.6651"W	8996.72	341.475	0.60	0.33	0.51
17157.00	89.600	329.460	7872.22	9059.99	8612.38	-2906.68	1748300.74	390602.31	39°34'8.3903"N	80°23'34.2922"W	9089.66	341.350	0.52	-0.52	0.04
17252.00	90.090	329.960	7872.48	9154.28	8694.41	-2954.60	1748252.83	390684.33	39°34'9.1963"N	80°23'34.9145"W	9182.72	341.231	0.74	0.52	0.53
17347.00	90.030	330.400	7872.38	9248.66	8776.83	-3001.84	1748205.59	390766.75	39°34'10.0062"N	80°23'35.5282"W	9275.98	341.118	0.47	-0.06	0.46
17442.00	89.850	329.820	7872.48	9343.03	8859.19	-3049.18	1748158.25	390849.11	39°34'10.8155"N	80°23'36.1431"W	9369.25	341.007	0.64	-0.19	-0.61
17537.00	90.250	330.110	7872.40	9437.37	8941.44	-3096.73	1748110.71	390931.35	39°34'11.6236"N	80°23'36.7607"W	9462.51	340.897	0.52	0.42	0.31
17632.00	90.150	329.300	7872.07	9531.66	9023.46	-3144.65	1748062.79	391013.37	39°34'12.4295"N	80°23'37.3831"W	9555.72	340.787	0.86	-0.11	-0.85
17727.00	90.650	330.190	7871.40	9625.95	9105.52	-3192.52	1748014.93	391095.42	39°34'13.2358"N	80°23'38.0047"W	9648.97	340.679	1.07	0.53	0.94
17822.00	90.280	330.280	7870.63	9720.34	9187.98	-3239.68	1747967.77	391177.88	39°34'14.0461"N	80°23'38.6173"W	9742.41	340.577	0.40	-0.39	0.09
17917.00	90.150	329.760	7870.27	9814.69	9270.27	-3287.15	1747920.30	391260.16	39°34'14.8547"N	80°23'39.2339"W	9835.81	340.476	0.56	-0.14	-0.55
18012.00	90.120	329.790	7870.05	9908.99	9352.36	-3334.97	1747872.48	391342.24	39°34'15.6612"N	80°23'39.8550"W	9929.18	340.374	0.04	-0.03	0.03
18107.00	89.910	329.490	7870.03	10003.27	9434.33	-3382.99	1747824.47	391424.21	39°34'16.4666"N	80°23'40.4786"W	10022.53	340.273	0.39	-0.22	-0.32
18202.00	89.660	329.320	7870.38	10097.49	9516.10	-3431.34	1747776.12	391505.98	39°34'17.2700"N	80°23'41.1064"W	10115.84	340.172	0.32	-0.26	-0.18



Actual Wellpath Report

Elliott 13H (L-003935) AWP Proj: 23308'
Page 9 of 12



REFERENCE WELLPATH IDENTIFICATION			
Operator	EQT PRODUCTION COMPANY	Well	Elliott 13H (L-003935)
Field	Marion	API	47-049-02504-00-00
Facility	Elliot Pad	Wellbore	Elliott 13H (L-003935) AWB
Slot	Slot 13		

WELLPATH DATA (263 stations)															
MD [ft]	Inclination [°]	Azimuth [°]	TVD [ft]	Vert Sect [ft]	North [ft]	East [ft]	Grid East [US ft]	Grid North [US ft]	Latitude	Longitude	Closure Dist [ft]	Closure Dir [°]	DLS ["/100ft]	Build Rate ["/100ft]	Turn Rate ["/100ft]
18297.00	89.720	329.100	7870.90	10191.68	9597.71	-3479.97	1747727.49	391587.58	39°34'18.0717"N	80°23'41.7377"W	10209.12	340.070	0.24	0.06	-0.23
18392.00	89.850	329.430	7871.25	10285.87	9679.37	-3528.52	1747678.95	391669.23	39°34'18.8739"N	80°23'42.3681"W	10302.45	339.971	0.37	0.14	0.35
18487.00	89.320	328.190	7871.94	10379.96	9760.63	-3577.71	1747629.75	391750.49	39°34'19.6722"N	80°23'43.0066"W	10395.67	339.870	1.42	-0.56	-1.31
18582.00	89.510	328.450	7872.91	10473.94	9841.47	-3627.60	1747579.87	391831.33	39°34'20.4662"N	80°23'43.6539"W	10488.76	339.766	0.34	0.20	0.27
18677.00	90.060	329.470	7873.27	10568.07	9922.86	-3676.59	1747530.89	391912.72	39°34'21.2657"N	80°23'44.2898"W	10582.09	339.669	1.22	0.58	1.07
18773.00	90.250	329.640	7873.01	10663.32	10005.63	-3725.23	1747482.24	391995.47	39°34'22.0789"N	80°23'44.9215"W	10676.61	339.579	0.27	0.20	0.18
18868.00	90.620	330.590	7872.29	10757.68	10087.99	-3772.56	1747434.91	392077.83	39°34'22.8882"N	80°23'45.5364"W	10770.32	339.496	1.07	0.39	1.00
19058.00	90.000	330.150	7871.26	10946.51	10253.14	-3866.50	1747340.99	392242.98	39°34'24.5111"N	80°23'46.7569"W	10957.95	339.338	0.40	-0.33	-0.23
19153.00	90.120	329.780	7871.16	11040.85	10335.39	-3914.05	1747293.44	392325.21	39°34'25.3192"N	80°23'47.3746"W	11051.70	339.258	0.41	0.13	-0.39
19248.00	90.150	329.880	7870.94	11135.17	10417.52	-3961.79	1747245.70	392407.34	39°34'26.1262"N	80°23'47.9947"W	11145.42	339.178	0.11	0.03	0.11
19344.00	89.510	328.620	7871.22	11230.35	10500.02	-4010.87	1747196.62	392489.83	39°34'26.9366"N	80°23'48.6320"W	11239.99	339.094	1.47	-0.67	-1.31
19439.00	89.910	329.150	7871.70	11324.46	10581.35	-4059.96	1747147.53	392571.16	39°34'27.7356"N	80°23'49.2693"W	11333.50	339.009	0.70	0.42	0.56
19534.00	89.720	327.660	7872.01	11418.46	10662.26	-4109.73	1747097.76	392652.07	39°34'28.5303"N	80°23'49.9151"W	11426.89	338.921	1.58	-0.20	-1.57
19629.00	89.660	327.250	7872.52	11512.22	10742.35	-4160.84	1747046.66	392732.15	39°34'29.3167"N	80°23'50.5780"W	11520.01	338.827	0.44	-0.06	-0.43
19725.00	89.350	328.810	7873.35	11607.11	10823.78	-4211.67	1746995.84	392813.58	39°34'30.1165"N	80°23'51.2374"W	11614.31	338.738	1.66	-0.32	1.63
19820.00	89.970	330.950	7873.91	11701.43	10905.94	-4259.33	1746948.17	392895.74	39°34'30.9238"N	80°23'51.8566"W	11708.18	338.667	2.35	0.65	2.25
19915.00	89.630	329.830	7874.25	11795.84	10988.54	-4306.27	1746901.24	392978.32	39°34'31.7354"N	80°23'52.4665"W	11802.20	338.600	1.23	-0.36	-1.18
20010.00	89.690	329.040	7874.81	11890.07	11070.33	-4354.58	1746852.93	393060.12	39°34'32.5390"N	80°23'53.0939"W	11895.99	338.528	0.83	0.06	-0.83
20105.00	89.720	329.750	7875.30	11984.30	11152.10	-4402.94	1746804.57	393141.88	39°34'33.3423"N	80°23'53.7219"W	11989.80	338.455	0.75	0.03	0.75
20200.00	89.690	329.350	7875.79	12078.55	11233.99	-4451.09	1746756.43	393223.77	39°34'34.1469"N	80°23'54.3472"W	12083.66	338.386	0.42	-0.03	-0.42
20295.00	90.000	331.580	7876.05	12172.98	11316.64	-4497.92	1746709.61	393306.41	39°34'34.9591"N	80°23'54.9557"W	12177.75	338.324	2.37	0.33	2.35
20390.00	90.120	331.290	7875.95	12267.58	11400.08	-4543.34	1746664.18	393389.84	39°34'35.7791"N	80°23'55.5465"W	12272.07	338.271	0.33	0.13	-0.31
20485.00	89.880	331.390	7875.95	12362.16	11483.44	-4588.90	1746618.62	393473.20	39°34'36.5985"N	80°23'56.1390"W	12366.38	338.218	0.27	-0.25	0.11
20579.00	89.820	332.070	7876.19	12455.80	11566.23	-4633.42	1746574.11	393555.98	39°34'37.4122"N	80°23'56.7181"W	12459.79	338.169	0.73	-0.06	0.72
20674.00	89.820	331.440	7876.49	12550.44	11649.92	-4678.38	1746529.15	393639.66	39°34'38.2348"N	80°23'57.3029"W	12554.19	338.121	0.66	0.00	-0.66
20769.00	89.660	331.420	7876.92	12645.04	11733.35	-4723.81	1746483.72	393723.09	39°34'39.0549"N	80°23'57.8937"W	12648.55	338.070	0.17	-0.17	-0.02
20864.00	90.310	331.690	7876.95	12739.65	11816.88	-4769.06	1746438.47	393806.62	39°34'39.8759"N	80°23'58.4823"W	12742.94	338.022	0.74	0.68	0.28
20960.00	90.000	330.650	7876.69	12835.20	11900.98	-4815.35	1746392.19	393890.71	39°34'40.7025"N	80°23'59.0842"W	12838.26	337.971	1.13	-0.32	-1.08
21055.00	89.880	330.050	7876.79	12929.61	11983.54	-4862.35	1746345.19	393973.27	39°34'41.5137"N	80°23'59.6949"W	12932.43	337.915	0.64	-0.13	-0.63
21150.00	90.180	330.460	7876.74	13024.01	12066.02	-4909.48	1746298.06	394055.74	39°34'42.3242"N	80°24'0.3074"W	13026.58	337.859	0.53	0.32	0.43



Actual Wellpath Report

Elliott 13H (L-003935) AWP Proj: 23308'
Page 10 of 12



REFERENCE WELLPATH IDENTIFICATION			
Operator	EQT PRODUCTION COMPANY	Well	Elliott 13H (L-003935)
Field	Marion	API	47-049-02504-00-00
Facility	Elliot Pad	Wellbore	Elliott 13H (L-003935) AWB
Slot	Slot 13		

WELLPATH DATA (263 stations) † = interpolated, ‡ = extrapolated station															
MD [ft]	Inclination [°]	Azimuth [°]	TVD [ft]	Vert Sect [ft]	North [ft]	East [ft]	Grid East [US ft]	Grid North [US ft]	Latitude	Longitude	Closure Dist [ft]	Closure Dir [°]	DLS [°/100ft]	Build Rate [°/100ft]	Turn Rate [°/100ft]
21245.00	90.370	330.800	7876.28	13118.47	12148.81	-4956.08	1746251.47	394138.53	39°34'43.1378"N	80°24'0.9130"W	13120.83	337.807	0.41	0.20	0.36
21340.00	89.940	330.020	7876.02	13212.89	12231.42	-5002.98	1746204.57	394221.13	39°34'43.9496"N	80°24'1.5226"W	13215.05	337.754	0.94	-0.45	-0.82
21435.00	90.000	330.490	7876.07	13307.29	12313.90	-5050.12	1746157.44	394303.61	39°34'44.7600"N	80°24'2.1351"W	13309.24	337.701	0.50	0.06	0.49
21530.00	90.060	330.340	7876.02	13401.72	12396.52	-5097.02	1746110.54	394386.22	39°34'45.5718"N	80°24'2.7446"W	13403.48	337.649	0.17	0.06	-0.16
21625.00	90.030	330.610	7875.95	13496.15	12479.18	-5143.84	1746063.72	394468.88	39°34'46.3841"N	80°24'3.3531"W	13497.74	337.599	0.29	-0.03	0.28
21720.00	90.060	330.860	7875.87	13590.63	12562.05	-5190.28	1746017.28	394551.75	39°34'47.1986"N	80°24'3.9568"W	13592.06	337.551	0.27	0.03	0.26
21816.00	89.910	330.080	7875.90	13686.06	12645.58	-5237.59	1745969.97	394635.27	39°34'48.0194"N	80°24'4.5718"W	13687.34	337.501	0.83	-0.16	-0.81
21911.00	89.820	330.080	7876.12	13780.42	12727.92	-5284.98	1745922.59	394717.60	39°34'48.8284"N	80°24'5.1874"W	13781.54	337.450	0.09	-0.09	0.00
22006.00	90.460	331.230	7875.89	13874.89	12810.73	-5331.53	1745876.04	394800.41	39°34'49.6422"N	80°24'5.7926"W	13875.88	337.404	1.39	0.67	1.21
22101.00	90.180	329.640	7875.36	13969.32	12893.36	-5378.41	1745829.17	394883.03	39°34'50.4541"N	80°24'6.4018"W	13970.18	337.357	1.70	-0.29	-1.67
22195.00	89.880	328.980	7875.31	14062.53	12974.19	-5426.38	1745781.19	394963.86	39°34'51.2482"N	80°24'7.0249"W	14063.26	337.303	0.77	-0.32	-0.70
22290.00	89.420	328.370	7875.89	14156.59	13055.34	-5475.77	1745731.81	395045.00	39°34'52.0453"N	80°24'7.6660"W	14157.19	337.245	0.80	-0.48	-0.64
22385.00	89.880	328.800	7876.47	14250.63	13136.41	-5525.29	1745682.30	395126.07	39°34'52.8416"N	80°24'8.3088"W	14251.11	337.188	0.66	0.48	0.45
22480.00	89.940	329.580	7876.62	14344.81	13218.00	-5573.94	1745633.64	395207.66	39°34'53.6431"N	80°24'8.9406"W	14345.19	337.135	0.82	0.06	0.82
22575.00	90.030	329.220	7876.65	14439.04	13299.77	-5622.30	1745585.29	395289.42	39°34'54.4464"N	80°24'9.5687"W	14439.33	337.084	0.39	0.09	-0.38
22669.00	89.970	329.610	7876.65	14532.28	13380.70	-5670.13	1745537.46	395370.34	39°34'55.2414"N	80°24'10.1899"W	14532.50	337.035	0.42	-0.06	0.41
22764.00	90.120	329.350	7876.57	14626.52	13462.53	-5718.38	1745489.22	395452.17	39°34'56.0454"N	80°24'10.8166"W	14626.68	336.986	0.32	0.16	-0.27
22859.00	89.720	328.380	7876.70	14720.63	13543.85	-5767.50	1745440.10	395533.48	39°34'56.8441"N	80°24'11.4543"W	14720.73	336.934	1.10	-0.42	-1.02
22954.00	90.310	329.310	7876.68	14814.73	13625.15	-5816.64	1745390.96	395614.77	39°34'57.6426"N	80°24'12.0925"W	14814.79	336.882	1.16	0.62	0.98
23049.00	89.970	326.870	7876.45	14908.65	13705.78	-5866.86	1745340.75	395695.41	39°34'58.4346"N	80°24'12.7441"W	14908.67	336.826	2.59	-0.36	-2.57
23144.00	90.090	329.400	7876.40	15002.57	13786.46	-5917.00	1745290.60	395776.08	39°34'59.2269"N	80°24'13.3949"W	15002.58	336.771	2.67	0.13	2.66
23240.00	90.280	329.410	7876.09	15097.79	13869.09	-5965.86	1745241.74	395858.71	39°35'0.0387"N	80°24'14.0295"W	15097.79	336.725	0.20	0.20	0.01
23308.00†	90.280	329.410	7875.76	15165.24	13927.63	-6000.47	1745207.14	395917.24	39°35'0.6137"N	80°24'14.4790"W	15165.24	336.692	0.00	0.00	0.00



Actual Wellpath Report

Elliott 13H (L-003935) AWP Proj: 23308'

Page 11 of 12



REFERENCE WELLPATH IDENTIFICATION			
Operator	EQT PRODUCTION COMPANY	Well	Elliott 13H (L-003935)
Field	Marion	API	47-049-02504-00-00
Facility	Elliot Pad	Wellbore	Elliott 13H (L-003935) AWB
Slot	Slot 13		

HOLE & CASING SECTIONS - Ref Wellbore: Elliott 13H (L-003935) AWB Ref Wellpath: Elliott 13H (L-003935) AWP Proj: 23308'									
String/Diameter	Start MD [ft]	End MD [ft]	Interval [ft]	Start TVD [ft]	End TVD [ft]	Start N/S [ft]	Start E/W [ft]	End N/S [ft]	End E/W [ft]
17.5in Open Hole	28.00	1030.00	1002.00	28.00	1029.97	0.00	0.00	-7.23	-1.18
13.375in Casing Surface	28.00	1030.00	1002.00	28.00	1029.97	0.00	0.00	-7.23	-1.18
12.25in Open Hole	1030.00	2503.00	1473.00	1029.97	2501.15	-7.23	-1.18	40.04	-34.92
9.625in Casing Intermediate	28.00	2503.00	2475.00	28.00	2501.15	0.00	0.00	40.04	-34.92
8.75in Open Hole	2503.00	7456.00	4953.00	2501.15	7132.81	40.04	-34.92	499.10	1507.49
8.5in Open Hole	7456.00	23308.00	15852.00	7132.81	7875.76	499.10	1507.49	13927.63	-6000.47
5.5in Casing Production	28.00	23308.00	23280.00	28.00	7875.76	0.00	0.00	13927.63	-6000.47

TARGETS								
Name	TVD [ft]	North [ft]	East [ft]	Grid East [US ft]	Grid North [US ft]	Latitude	Longitude	Shape
Elliott 13H LP Rev-1	7830.00	1177.94	1414.26	1752621.42	383168.32	39°32'55.3380"N	80°22'38.1921"W	point
Elliott 13H BHL Rev-1	7894.35	13931.80	-5993.23	1745214.38	395921.41	39°35'0.6557"N	80°24'14.3871"W	point

WELLPATH COMPOSITION - Ref Wellbore: Elliott 13H (L-003935) AWB Ref Wellpath: Elliott 13H (L-003935) AWP Proj: 23308'								
Start MD [ft]	End MD [ft]	Positional Uncertainty Model	Log Name/Comment	Wellbore	Survey Date			
28.00	890.00	Gyrodata 2015 - CT+WIR+ALC	01 Gyrodata Cont Gyro <17-1/2">(115'-890')	Elliott 13H (L-003935) AWB	7/8/2021			
890.00	7380.00	OWSG MWD rev2 - Standard	02 SDI MWD <8-3/4">(890')(1049'-7380')	Elliott 13H (L-003935) AWB	7/8/2021			
7380.00	23308.00	OWSG MWD rev2 + IFR1 + Multi-Station Correction	03 BH AT Curve + MagVAR MSA <8-1/2">(7380')(7460'-23240')	Elliott 13H (L-003935) AWB	7/31/2021			



Actual Wellpath Report

Elliott 13H (L-003935) AWP Proj: 23308'
Page 12 of 12

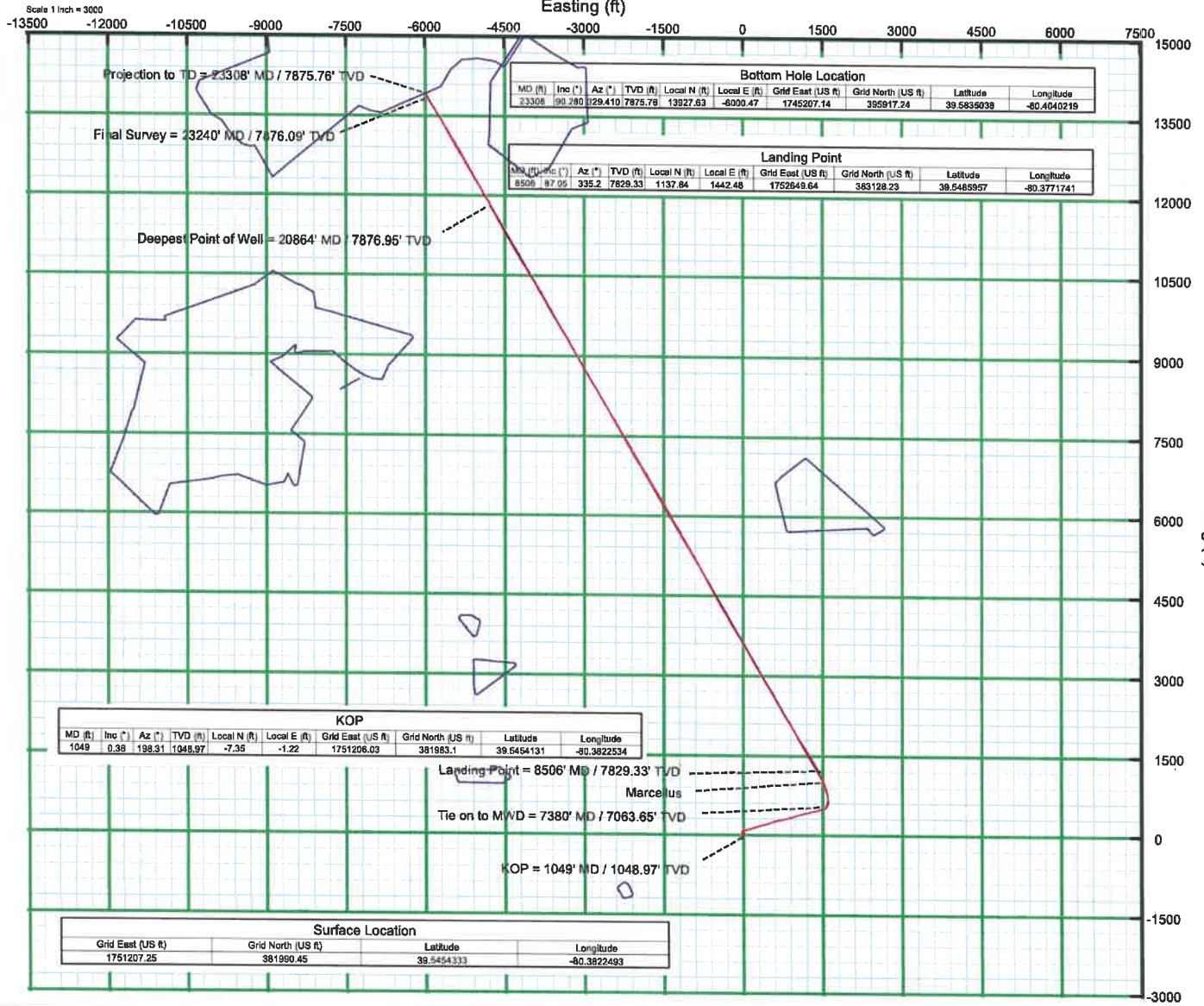
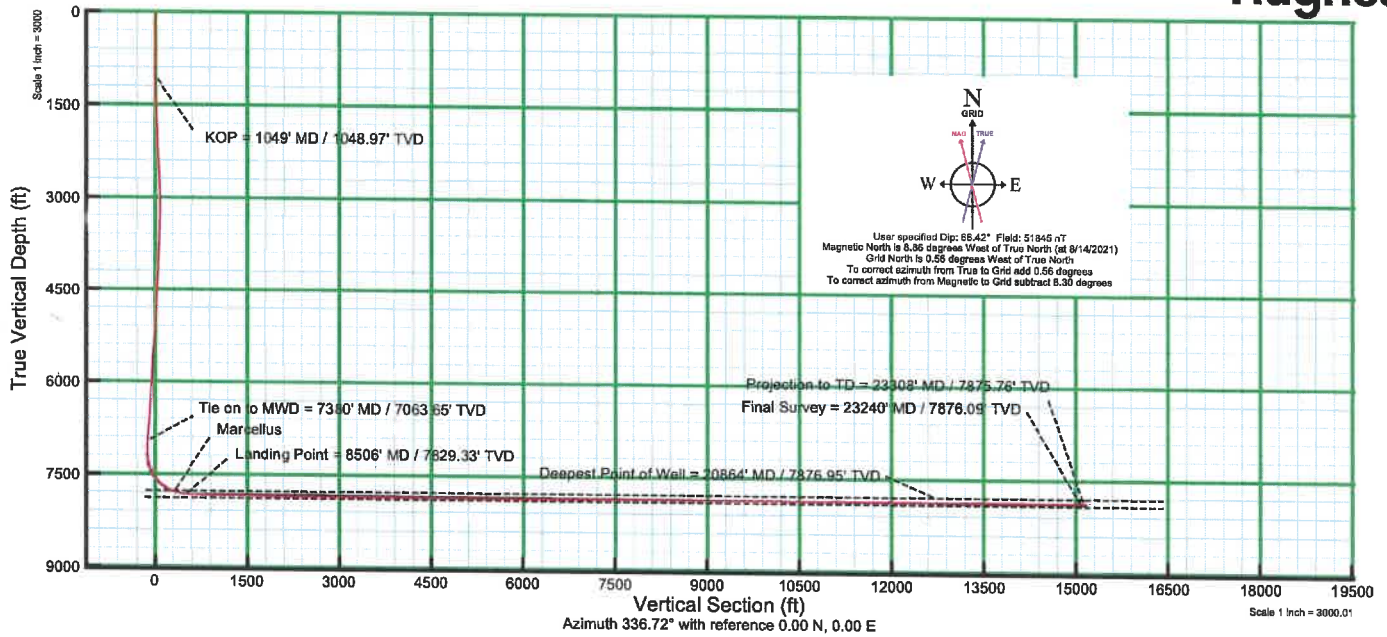


REFERENCE WELLPATH IDENTIFICATION			
Operator	EQT PRODUCTION COMPANY	Well	Elliott 13H (L-003935)
Field	Marion	API	47-049-02504-00-00
Facility	Elliot Pad	Wellbore	Elliott 13H (L-003935) AWB
Slot	Slot 13		

COMMENTS
<p>Wellpath general comments API: 47-049-02504-0000 BH Job #: 110974178 Rig: Patterson 292 Duration: 8/2/21 - 8/5/21</p> <p>Gyrodata Cont Gyro <17-1/2">(115'-890') SDI MWD <8-3/4">(890')(1049'-7380') BH AT Curve + MagVAR MSA <8-1/2">(7380')(7460'-23240') Projected MD at TD: 23308'</p>



KB Elevation=1370 FT
 Ground Elevation=1342 FT
 All Survey Measurements were taken from KB Elevation



10/14/2022