

EQT PRODUCTION

Marion County, WV

Elliott Pad

Elliott 2H L-004604 - Slot Elliott 2H SHL

Main

Design: Elliott 2H As Drilled

Survey Report - Geographic

14 July, 2025

RECEIVED
Office of Oil and Gas

AN 15 2026

WV Department of
Environmental Protection



Scientific Drilling

www.scientificdrilling.com



04/24/2026

Survey Report - Geographic

Company: EQT PRODUCTION	Local Co-ordinate Reference: Well Elliott 2H L-004604 - Slot Elliott 2H SHL
Project: Marion County, WV	TVD Reference: KB@28 @ 1371.0usft
Site: Elliott Pad	MD Reference: KB@28 @ 1371.0usft
Well: Elliott 2H L-004604	North Reference: Grid
Wellbore: Main	Survey Calculation Method: Minimum Curvature
Design: Elliott 2H As Drilled	Database: EQT

Project Marion County, WV	
Map System: US State Plane 1927 (Exact solution)	System Datum: Mean Sea Level
Geo Datum: NAD 1927 (NADCON CONUS)	
Map Zone: West Virginia North 4701	

Site Elliott Pad		
Site Position:	Northing: 381,889.78 usft	Latitude: 39° 32' 42.563 N
From: Map	Easting: 1,751,187.95 usft	Longitude: 80° 22' 56.331 W
Position Uncertainty: 0.0 usft	Slot Radius: 13-3/16 "	Grid Convergence: -0.56 °

Well Elliott 2H L-004604 - Slot Elliott 2H SHL			
Well Position	+N/-S 0.0 usft	Northing: 381,918.54 usft	Latitude: 39° 32' 42.849 N
	+E/-W 0.0 usft	Easting: 1,751,204.01 usft	Longitude: 80° 22' 56.130 W
Position Uncertainty 0.0 usft	Wellhead Elevation: usft	Ground Level: 1,343.0 usft	

Wellbore Main

Magnetics	Model Name	Sample Date	Declination (°)	Dip Angle (°)	Field Strength (nT)
	IFR	6/20/2025	-8.96	66.13	51,410.80000000

Design Elliott 2H As Drilled	
-------------------------------------	--

Audit Notes:				
Version: 1.0	Phase: ACTUAL	Tie On Depth: 0.0		

Vertical Section:	Depth From (TVD) (usft)	+N/-S (usft)	+E/-W (usft)	Direction (°)
	0.0	0.0	0.0	164.95

Survey									
Measured Depth (usft)	Inclination (°)	Azimuth (°)	Vertical Depth (usft)	+N/-S (usft)	+E/-W (usft)	Map Northing (usft)	Map Easting (usft)	Latitude	Longitude
0.0	0.00	0.00	0.0	0.0	0.0	381,918.54	1,751,204.01	39° 32' 42.849 N	80° 22' 56.130 W
115.0	0.34	157.69	115.0	-0.3	0.1	381,918.23	1,751,204.14	39° 32' 42.846 N	80° 22' 56.128 W
215.0	0.09	163.83	215.0	-0.7	0.3	381,917.88	1,751,204.28	39° 32' 42.842 N	80° 22' 56.126 W
315.0	0.11	246.55	315.0	-0.8	0.2	381,917.76	1,751,204.21	39° 32' 42.841 N	80° 22' 56.127 W
415.0	0.10	296.37	415.0	-0.8	0.0	381,917.76	1,751,204.04	39° 32' 42.841 N	80° 22' 56.129 W
515.0	0.27	100.05	515.0	-0.8	0.2	381,917.76	1,751,204.20	39° 32' 42.841 N	80° 22' 56.127 W
615.0	0.22	150.48	615.0	-1.0	0.5	381,917.55	1,751,204.53	39° 32' 42.839 N	80° 22' 56.123 W
715.0	0.10	171.84	715.0	-1.2	0.6	381,917.30	1,751,204.63	39° 32' 42.837 N	80° 22' 56.122 W
815.0	0.30	145.88	815.0	-1.5	0.8	381,917.00	1,751,204.79	39° 32' 42.834 N	80° 22' 56.120 W
915.0	0.26	159.03	915.0	-2.0	1.0	381,916.57	1,751,205.02	39° 32' 42.829 N	80° 22' 56.117 W
1,015.0	0.18	152.64	1,015.0	-2.3	1.2	381,916.22	1,751,205.17	39° 32' 42.826 N	80° 22' 56.115 W
1,115.0	0.12	198.92	1,115.0	-2.6	1.2	381,915.98	1,751,205.21	39° 32' 42.824 N	80° 22' 56.114 W
1,215.0	0.30	113.62	1,215.0	-2.8	1.4	381,915.77	1,751,205.42	39° 32' 42.822 N	80° 22' 56.112 W
1,315.0	0.23	138.25	1,315.0	-3.0	1.8	381,915.52	1,751,205.79	39° 32' 42.819 N	80° 22' 56.107 W
1,415.0	0.44	149.27	1,415.0	-3.5	2.1	381,915.04	1,751,206.12	39° 32' 42.814 N	80° 22' 56.102 W
1,515.0	0.55	161.57	1,515.0	-4.3	2.5	381,914.25	1,751,206.47	39° 32' 42.807 N	80° 22' 56.098 W
1,615.0	0.80	166.67	1,615.0	-5.4	2.8	381,913.12	1,751,206.78	39° 32' 42.795 N	80° 22' 56.094 W
1,715.0	0.91	181.40	1,715.0	-6.9	2.9	381,911.65	1,751,206.92	39° 32' 42.781 N	80° 22' 56.092 W
1,815.0	0.87	180.91	1,815.0	-8.4	2.9	381,910.09	1,751,206.89	39° 32' 42.766 N	80° 22' 56.092 W

Survey Report - Geographic

Company:	EQT PRODUCTION	Local Co-ordinate Reference:	Well Elliott 2H L-004604 - Slot Elliott 2H SHL
Project:	Marion County, WV	TVD Reference:	KB@28 @ 1371.0usft
Site:	Elliott Pad	MD Reference:	KB@28 @ 1371.0usft
Well:	Elliott 2H L-004604	North Reference:	Grid
Wellbore:	Main	Survey Calculation Method:	Minimum Curvature
Design:	Elliott 2H As Drilled	Database:	EQT

Survey

Measured Depth (usft)	Inclination (°)	Azimuth (°)	Vertical Depth (usft)	+N/-S (usft)	+E/-W (usft)	Map Northing (usft)	Map Easting (usft)	Latitude	Longitude
1,915.0	0.59	202.96	1,914.9	-9.7	2.7	381,908.86	1,751,206.68	39° 32' 42.753 N	80° 22' 56.095 W
2,015.0	0.36	212.95	2,014.9	-10.4	2.3	381,908.12	1,751,206.31	39° 32' 42.746 N	80° 22' 56.099 W
2,115.0	0.22	272.82	2,114.9	-10.7	1.9	381,907.87	1,751,205.94	39° 32' 42.743 N	80° 22' 56.104 W
2,215.0	0.06	250.52	2,214.9	-10.7	1.7	381,907.86	1,751,205.70	39° 32' 42.743 N	80° 22' 56.107 W
2,315.0	0.17	260.25	2,314.9	-10.7	1.5	381,907.82	1,751,205.51	39° 32' 42.743 N	80° 22' 56.109 W
2,415.0	0.16	321.63	2,414.9	-10.6	1.3	381,907.90	1,751,205.27	39° 32' 42.744 N	80° 22' 56.112 W
2,463.0	0.20	308.95	2,462.9	-10.5	1.2	381,908.01	1,751,205.17	39° 32' 42.745 N	80° 22' 56.114 W
2,590.0	0.08	277.63	2,589.9	-10.4	0.9	381,908.16	1,751,204.91	39° 32' 42.746 N	80° 22' 56.117 W
KOP 1 at 2590.0 MD_2589.9 TVD									
2,634.0	0.18	256.03	2,633.9	-10.4	0.8	381,908.15	1,751,204.81	39° 32' 42.746 N	80° 22' 56.118 W
2,677.0	0.86	217.92	2,676.9	-10.7	0.5	381,907.87	1,751,204.55	39° 32' 42.743 N	80° 22' 56.122 W
2,720.0	2.32	216.26	2,719.9	-11.6	-0.2	381,906.92	1,751,203.83	39° 32' 42.734 N	80° 22' 56.131 W
2,763.0	4.14	212.55	2,762.9	-13.6	-1.5	381,904.91	1,751,202.48	39° 32' 42.714 N	80° 22' 56.148 W
2,807.0	5.54	208.81	2,806.7	-16.8	-3.4	381,901.71	1,751,200.60	39° 32' 42.682 N	80° 22' 56.171 W
2,850.0	6.18	210.69	2,849.5	-20.6	-5.6	381,897.90	1,751,198.42	39° 32' 42.644 N	80° 22' 56.199 W
2,893.0	6.68	210.41	2,892.2	-24.8	-8.0	381,893.75	1,751,195.98	39° 32' 42.603 N	80° 22' 56.229 W
2,936.0	7.94	211.31	2,934.8	-29.5	-10.8	381,889.06	1,751,193.17	39° 32' 42.556 N	80° 22' 56.265 W
2,979.0	9.00	210.00	2,977.4	-34.9	-14.1	381,883.61	1,751,189.94	39° 32' 42.502 N	80° 22' 56.305 W
3,023.0	9.72	209.61	3,020.8	-41.1	-17.6	381,877.40	1,751,186.39	39° 32' 42.440 N	80° 22' 56.350 W
3,066.0	9.93	207.53	3,063.2	-47.6	-21.1	381,870.95	1,751,182.88	39° 32' 42.376 N	80° 22' 56.394 W
3,109.0	10.32	203.10	3,105.5	-54.4	-24.4	381,864.12	1,751,179.65	39° 32' 42.309 N	80° 22' 56.434 W
3,152.0	10.68	199.72	3,147.8	-61.7	-27.2	381,856.83	1,751,176.80	39° 32' 42.236 N	80° 22' 56.469 W
3,195.0	10.77	198.85	3,190.0	-69.3	-29.9	381,849.28	1,751,174.15	39° 32' 42.161 N	80° 22' 56.502 W
3,239.0	10.76	198.79	3,233.2	-77.0	-32.5	381,841.50	1,751,171.50	39° 32' 42.084 N	80° 22' 56.535 W
3,282.0	10.43	197.26	3,275.5	-84.6	-35.0	381,833.98	1,751,169.06	39° 32' 42.010 N	80° 22' 56.565 W
3,325.0	10.12	195.80	3,317.8	-91.9	-37.1	381,826.63	1,751,166.87	39° 32' 41.937 N	80° 22' 56.592 W
3,368.0	10.17	197.82	3,360.2	-99.2	-39.3	381,819.38	1,751,164.68	39° 32' 41.865 N	80° 22' 56.619 W
3,411.0	10.10	201.54	3,402.5	-106.3	-41.9	381,812.26	1,751,162.14	39° 32' 41.794 N	80° 22' 56.651 W
3,455.0	10.27	205.11	3,445.8	-113.4	-45.0	381,805.12	1,751,159.05	39° 32' 41.723 N	80° 22' 56.689 W
3,498.0	11.03	209.96	3,488.1	-120.5	-48.6	381,798.08	1,751,155.37	39° 32' 41.654 N	80° 22' 56.736 W
3,541.0	12.05	213.49	3,530.2	-127.8	-53.2	381,790.77	1,751,150.84	39° 32' 41.581 N	80° 22' 56.793 W
3,584.0	12.87	218.94	3,572.2	-135.2	-58.7	381,783.31	1,751,145.36	39° 32' 41.506 N	80° 22' 56.862 W
3,627.0	13.78	223.82	3,614.0	-142.7	-65.2	381,775.89	1,751,138.80	39° 32' 41.433 N	80° 22' 56.944 W
3,671.0	14.53	226.22	3,656.7	-150.3	-72.8	381,768.29	1,751,131.19	39° 32' 41.357 N	80° 22' 57.041 W
3,714.0	15.55	227.36	3,698.2	-157.9	-81.0	381,760.65	1,751,123.05	39° 32' 41.280 N	80° 22' 57.143 W
3,757.0	16.58	228.47	3,739.5	-165.9	-89.8	381,752.68	1,751,114.22	39° 32' 41.201 N	80° 22' 57.255 W
3,800.0	17.57	229.27	3,780.6	-174.2	-99.3	381,744.37	1,751,104.71	39° 32' 41.118 N	80° 22' 57.376 W
3,843.0	18.67	229.67	3,821.5	-182.9	-109.5	381,735.68	1,751,094.54	39° 32' 41.031 N	80° 22' 57.504 W
3,886.0	19.92	229.61	3,862.1	-192.1	-120.3	381,726.48	1,751,083.72	39° 32' 40.939 N	80° 22' 57.641 W
3,930.0	20.97	230.35	3,903.3	-201.9	-132.1	381,716.60	1,751,071.94	39° 32' 40.840 N	80° 22' 57.790 W
3,974.0	21.78	229.09	3,944.3	-212.3	-144.3	381,706.23	1,751,059.71	39° 32' 40.736 N	80° 22' 57.945 W
4,017.0	22.18	231.56	3,984.2	-222.6	-156.7	381,695.96	1,751,047.33	39° 32' 40.634 N	80° 22' 58.102 W
4,060.0	22.67	233.07	4,023.9	-232.6	-169.7	381,685.94	1,751,034.34	39° 32' 40.533 N	80° 22' 58.266 W
4,103.0	23.67	234.72	4,063.4	-242.6	-183.3	381,675.97	1,751,020.67	39° 32' 40.434 N	80° 22' 58.440 W
4,190.0	24.60	233.17	4,142.8	-263.5	-212.1	381,655.03	1,750,991.92	39° 32' 40.224 N	80° 22' 58.804 W
4,276.0	25.19	237.24	4,220.8	-284.1	-241.8	381,634.39	1,750,962.20	39° 32' 40.017 N	80° 22' 59.181 W
4,362.0	26.91	241.01	4,298.1	-303.5	-274.2	381,615.06	1,750,929.78	39° 32' 39.823 N	80° 22' 59.592 W
4,449.0	28.38	242.57	4,375.2	-322.6	-309.8	381,595.99	1,750,894.21	39° 32' 39.631 N	80° 23' 0.044 W
4,535.0	29.08	243.68	4,450.6	-341.2	-346.7	381,577.31	1,750,857.33	39° 32' 39.443 N	80° 23' 0.512 W
4,622.0	30.61	243.43	4,526.0	-360.5	-385.4	381,558.02	1,750,818.57	39° 32' 39.248 N	80° 23' 1.005 W
4,708.0	31.50	242.47	4,599.7	-380.7	-425.0	381,537.84	1,750,779.06	39° 32' 39.045 N	80° 23' 1.507 W
4,794.0	32.52	243.66	4,672.6	-401.3	-465.6	381,517.20	1,750,738.42	39° 32' 38.837 N	80° 23' 2.023 W
4,881.0	34.77	246.64	4,745.1	-421.6	-509.3	381,496.99	1,750,694.68	39° 32' 38.633 N	80° 23' 2.579 W
4,967.0	37.21	248.03	4,814.7	-441.0	-556.0	381,477.53	1,750,648.05	39° 32' 38.436 N	80° 23' 3.171 W
5,044.0	39.04	247.99	4,875.2	-458.8	-600.0	381,459.73	1,750,603.97	39° 32' 38.256 N	80° 23' 3.732 W

Survey Report - Geographic

Company:	EQT PRODUCTION	Local Co-ordinate Reference:	Well Elliott 2H L-004604 - Slot Elliott 2H SHL
Project:	Marion County, WV	TVD Reference:	KB@28 @ 1371.0usft
Site:	Elliott Pad	MD Reference:	KB@28 @ 1371.0usft
Well:	Elliott 2H L-004604	North Reference:	Grid
Wellbore:	Main	Survey Calculation Method:	Minimum Curvature
Design:	Elliott 2H As Drilled	Database:	EQT

Survey

Measured Depth (usft)	Inclination (°)	Azimuth (°)	Vertical Depth (usft)	+N/-S (usft)	+E/-W (usft)	Map Northing (usft)	Map Easting (usft)	Latitude	Longitude
5,131.0	40.46	247.92	4,942.1	-479.7	-651.6	381,438.85	1,750,552.41	39° 32' 38.044 N	80° 23' 4.387 W
5,217.0	41.46	246.84	5,007.1	-501.4	-703.6	381,417.16	1,750,500.37	39° 32' 37.825 N	80° 23' 5.049 W
5,303.0	40.86	245.59	5,071.8	-524.2	-755.4	381,394.34	1,750,448.58	39° 32' 37.594 N	80° 23' 5.707 W
5,390.0	40.39	246.57	5,137.8	-547.2	-807.2	381,371.37	1,750,396.80	39° 32' 37.362 N	80° 23' 6.365 W
5,476.0	40.06	245.96	5,203.5	-569.5	-858.1	381,349.02	1,750,345.96	39° 32' 37.137 N	80° 23' 7.011 W
5,563.0	39.17	244.32	5,270.5	-592.8	-908.4	381,325.71	1,750,295.63	39° 32' 36.901 N	80° 23' 7.651 W
5,649.0	39.08	243.79	5,337.2	-616.6	-957.2	381,301.96	1,750,246.83	39° 32' 36.662 N	80° 23' 8.271 W
5,735.0	41.91	246.73	5,402.6	-639.9	-1,007.9	381,278.64	1,750,196.11	39° 32' 36.426 N	80° 23' 8.915 W
5,822.0	41.25	246.96	5,467.7	-662.6	-1,061.0	381,255.93	1,750,143.02	39° 32' 36.197 N	80° 23' 9.590 W
5,908.0	42.35	247.02	5,531.8	-685.0	-1,113.8	381,233.53	1,750,090.26	39° 32' 35.970 N	80° 23' 10.261 W
5,994.0	42.66	246.72	5,595.2	-707.8	-1,167.2	381,210.70	1,750,036.83	39° 32' 35.739 N	80° 23' 10.940 W
6,081.0	41.58	246.65	5,659.8	-730.9	-1,220.8	381,187.61	1,749,983.24	39° 32' 35.506 N	80° 23' 11.621 W
6,167.0	40.03	247.01	5,724.9	-753.0	-1,272.4	381,165.49	1,749,931.58	39° 32' 35.282 N	80° 23' 12.278 W
6,254.0	40.16	246.78	5,791.4	-775.0	-1,324.0	381,143.50	1,749,880.04	39° 32' 35.060 N	80° 23' 12.933 W
6,340.0	41.39	247.01	5,856.5	-797.1	-1,375.6	381,121.47	1,749,828.38	39° 32' 34.837 N	80° 23' 13.590 W
6,426.0	43.30	247.38	5,920.1	-819.5	-1,429.0	381,099.02	1,749,774.98	39° 32' 34.610 N	80° 23' 14.268 W
6,513.0	43.14	245.83	5,983.5	-843.2	-1,483.7	381,075.36	1,749,720.30	39° 32' 34.371 N	80° 23' 14.963 W
6,599.0	42.67	245.33	6,046.5	-867.4	-1,537.0	381,051.16	1,749,666.99	39° 32' 34.126 N	80° 23' 15.641 W
6,685.0	41.85	244.51	6,110.1	-891.9	-1,589.4	381,026.65	1,749,614.61	39° 32' 33.879 N	80° 23' 16.306 W
6,772.0	40.15	244.78	6,175.8	-916.3	-1,641.0	381,002.21	1,749,563.04	39° 32' 33.632 N	80° 23' 16.962 W
6,858.0	39.06	246.23	6,242.0	-939.1	-1,690.9	380,979.47	1,749,513.15	39° 32' 33.403 N	80° 23' 17.595 W
6,944.0	38.14	246.33	6,309.3	-960.7	-1,740.0	380,957.89	1,749,464.03	39° 32' 33.185 N	80° 23' 18.220 W
7,030.0	38.00	246.55	6,377.0	-981.9	-1,788.6	380,936.69	1,749,415.42	39° 32' 32.971 N	80° 23' 18.837 W
7,117.0	37.83	246.84	6,445.6	-1,003.0	-1,837.7	380,915.54	1,749,366.32	39° 32' 32.757 N	80° 23' 19.462 W
7,203.0	37.28	246.91	6,513.8	-1,023.6	-1,885.9	380,894.95	1,749,318.12	39° 32' 32.548 N	80° 23' 20.074 W
7,289.0	38.11	250.36	6,581.8	-1,042.7	-1,934.9	380,875.81	1,749,269.16	39° 32' 32.355 N	80° 23' 20.697 W
7,366.0	40.69	251.79	6,641.3	-1,058.6	-1,981.1	380,859.98	1,749,222.93	39° 32' 32.194 N	80° 23' 21.285 W
7,452.0	42.46	251.03	6,705.7	-1,076.8	-2,035.2	380,841.78	1,749,168.84	39° 32' 32.008 N	80° 23' 21.973 W
7,538.0	43.88	246.99	6,768.4	-1,097.9	-2,090.1	380,820.69	1,749,113.94	39° 32' 31.795 N	80° 23' 22.671 W
7,625.0	43.52	244.66	6,831.3	-1,122.5	-2,144.9	380,796.08	1,749,059.11	39° 32' 31.546 N	80° 23' 23.368 W
7,711.0	42.24	241.87	6,894.3	-1,148.8	-2,197.2	380,769.78	1,749,006.85	39° 32' 31.281 N	80° 23' 24.032 W
7,796.0	41.62	239.81	6,912.9	-1,156.9	-2,211.7	380,761.64	1,748,992.26	39° 32' 31.199 N	80° 23' 24.217 W
7,769.0	41.19	237.94	6,937.7	-1,168.2	-2,230.4	380,750.36	1,748,973.58	39° 32' 31.086 N	80° 23' 24.454 W
KOP 2 at 7769.0 MD_6937.7 TVD									
7,865.0	40.60	243.39	7,010.3	-1,199.0	-2,285.2	380,719.58	1,748,918.84	39° 32' 30.776 N	80° 23' 25.149 W
7,959.0	40.73	248.86	7,081.6	-1,223.7	-2,341.1	380,694.81	1,748,862.88	39° 32' 30.526 N	80° 23' 25.860 W
8,053.0	40.25	250.21	7,153.1	-1,245.1	-2,398.3	380,673.47	1,748,805.70	39° 32' 30.309 N	80° 23' 26.587 W
8,148.0	40.20	255.60	7,225.6	-1,263.1	-2,456.9	380,655.45	1,748,747.10	39° 32' 30.125 N	80° 23' 27.333 W
8,243.0	39.76	249.76	7,298.5	-1,281.2	-2,515.1	380,637.31	1,748,688.88	39° 32' 29.940 N	80° 23' 28.074 W
8,337.0	40.95	238.17	7,370.2	-1,307.9	-2,569.6	380,610.62	1,748,634.43	39° 32' 29.671 N	80° 23' 28.765 W
8,432.0	40.77	226.81	7,442.1	-1,345.6	-2,618.7	380,572.92	1,748,585.29	39° 32' 29.294 N	80° 23' 29.388 W
8,527.0	43.97	214.42	7,512.4	-1,394.2	-2,660.1	380,524.39	1,748,543.95	39° 32' 28.810 N	80° 23' 29.909 W
8,621.0	47.89	202.30	7,577.9	-1,453.5	-2,691.8	380,465.07	1,748,512.21	39° 32' 28.221 N	80° 23' 30.307 W
8,716.0	54.29	194.45	7,637.6	-1,523.6	-2,714.8	380,394.98	1,748,489.16	39° 32' 27.526 N	80° 23' 30.592 W
8,810.0	58.00	184.56	7,690.1	-1,600.4	-2,727.6	380,318.14	1,748,476.45	39° 32' 26.765 N	80° 23' 30.745 W
8,904.0	63.80	178.81	7,735.8	-1,682.4	-2,729.9	380,236.12	1,748,474.15	39° 32' 25.954 N	80° 23' 30.764 W
8,914.1	64.45	178.32	7,740.2	-1,691.5	-2,729.6	380,227.04	1,748,474.38	39° 32' 25.865 N	80° 23' 30.760 W
Top of Marcellus at 8914.0 MD_7740.3 TVD									
8,999.0	69.98	174.43	7,773.1	-1,769.6	-2,724.6	380,148.97	1,748,479.37	39° 32' 25.093 N	80° 23' 30.686 W
9,092.0	75.27	167.57	7,800.9	-1,857.1	-2,710.7	380,061.41	1,748,493.32	39° 32' 24.229 N	80° 23' 30.497 W
9,187.0	84.82	159.78	7,817.3	-1,946.7	-2,684.4	379,971.82	1,748,519.66	39° 32' 23.347 N	80° 23' 30.149 W
9,281.0	90.87	154.00	7,820.8	-2,033.0	-2,647.5	379,885.50	1,748,556.50	39° 32' 22.497 N	80° 23' 29.668 W
LP at 9281.0 MD_7820.8 TVD - Deepest Point Of Well at 9281.0 MD_7820.8 TVD									
9,376.0	90.60	151.56	7,819.6	-2,117.5	-2,604.1	379,801.04	1,748,599.95	39° 32' 21.667 N	80° 23' 29.103 W
9,470.0	89.60	148.70	7,819.5	-2,199.0	-2,557.3	379,719.53	1,748,646.76	39° 32' 20.866 N	80° 23' 28.495 W

Survey Report - Geographic

Company:	EQT PRODUCTION	Local Co-ordinate Reference:	Well Elliott 2H L-004604 - Slot Elliott 2H SHL
Project:	Marion County, WV	TVD Reference:	KB@28 @ 1371.0usft
Site:	Elliott Pad	MD Reference:	KB@28 @ 1371.0usft
Well:	Elliott 2H L-004604	North Reference:	Grid
Wellbore:	Main	Survey Calculation Method:	Minimum Curvature
Design:	Elliott 2H As Drilled	Database:	EQT

Survey									
Measured Depth (usft)	Inclination (°)	Azimuth (°)	Vertical Depth (usft)	+N/-S (usft)	+E/-W (usft)	Map Northing (usft)	Map Easting (usft)	Latitude	Longitude
9,565.0	90.30	148.26	7,819.5	-2,280.0	-2,507.6	379,638.55	1,748,696.42	39° 32' 20.070 N	80° 23' 27.851 W
9,660.0	90.57	148.69	7,818.8	-2,361.0	-2,457.9	379,557.57	1,748,746.10	39° 32' 19.275 N	80° 23' 27.207 W
9,755.0	90.34	148.92	7,818.1	-2,442.2	-2,408.7	379,476.31	1,748,795.30	39° 32' 18.476 N	80° 23' 26.568 W
9,851.0	90.44	150.25	7,817.4	-2,525.0	-2,360.1	379,393.53	1,748,843.90	39° 32' 17.663 N	80° 23' 25.938 W
9,947.0	90.54	151.35	7,816.6	-2,608.8	-2,313.3	379,309.73	1,748,890.73	39° 32' 16.839 N	80° 23' 25.329 W
10,042.0	90.88	152.82	7,815.4	-2,692.7	-2,268.8	379,225.79	1,748,935.20	39° 32' 16.014 N	80° 23' 24.751 W
10,138.0	90.57	154.80	7,814.2	-2,778.9	-2,226.4	379,139.66	1,748,977.57	39° 32' 15.167 N	80° 23' 24.199 W
10,233.0	90.57	155.71	7,813.3	-2,865.2	-2,186.7	379,053.39	1,749,017.33	39° 32' 14.318 N	80° 23' 23.681 W
10,328.0	90.77	154.55	7,812.1	-2,951.3	-2,146.7	378,967.21	1,749,057.28	39° 32' 13.470 N	80° 23' 23.160 W
10,423.0	91.18	155.16	7,810.5	-3,037.3	-2,106.4	378,881.22	1,749,097.64	39° 32' 12.624 N	80° 23' 22.634 W
10,517.0	90.94	155.40	7,808.8	-3,122.7	-2,067.1	378,795.85	1,749,136.94	39° 32' 11.785 N	80° 23' 22.122 W
10,612.0	90.14	152.91	7,807.9	-3,208.2	-2,025.7	378,710.36	1,749,178.35	39° 32' 10.944 N	80° 23' 21.582 W
10,707.0	91.01	155.45	7,806.9	-3,293.7	-1,984.3	378,624.86	1,749,219.72	39° 32' 10.103 N	80° 23' 21.043 W
10,802.0	89.03	153.38	7,806.9	-3,379.4	-1,943.3	378,539.19	1,749,260.74	39° 32' 9.260 N	80° 23' 20.509 W
10,897.0	91.14	156.46	7,806.8	-3,465.4	-1,903.0	378,453.16	1,749,301.00	39° 32' 8.414 N	80° 23' 19.984 W
10,991.0	89.83	154.83	7,806.0	-3,551.0	-1,864.2	378,367.53	1,749,339.76	39° 32' 7.571 N	80° 23' 19.479 W
11,086.0	90.81	155.63	7,805.4	-3,637.3	-1,824.4	378,281.27	1,749,379.57	39° 32' 6.722 N	80° 23' 18.960 W
11,181.0	91.51	154.47	7,803.5	-3,723.4	-1,784.4	378,195.16	1,749,419.63	39° 32' 5.875 N	80° 23' 18.438 W
11,276.0	90.87	154.24	7,801.5	-3,809.0	-1,743.3	378,109.54	1,749,460.74	39° 32' 5.033 N	80° 23' 17.902 W
11,370.0	90.37	154.55	7,800.5	-3,893.8	-1,702.7	378,024.77	1,749,501.36	39° 32' 4.199 N	80° 23' 17.373 W
11,465.0	91.27	154.62	7,799.2	-3,979.6	-1,661.9	377,938.98	1,749,542.12	39° 32' 3.355 N	80° 23' 16.842 W
11,559.0	89.16	154.32	7,798.8	-4,064.4	-1,621.4	377,854.16	1,749,582.63	39° 32' 2.521 N	80° 23' 16.314 W
11,653.0	90.40	156.14	7,799.2	-4,149.7	-1,582.0	377,768.81	1,749,622.02	39° 32' 1.681 N	80° 23' 15.801 W
11,748.0	90.94	155.82	7,798.1	-4,236.5	-1,543.3	377,682.05	1,749,660.68	39° 32' 0.828 N	80° 23' 15.296 W
11,842.0	90.97	155.64	7,796.5	-4,322.2	-1,504.7	377,596.37	1,749,699.32	39° 31' 59.984 N	80° 23' 14.792 W
11,937.0	91.03	155.72	7,794.8	-4,408.7	-1,465.6	377,509.81	1,749,738.43	39° 31' 59.133 N	80° 23' 14.282 W
12,032.0	89.82	154.59	7,794.1	-4,494.9	-1,425.7	377,423.61	1,749,778.35	39° 31' 58.285 N	80° 23' 13.762 W
12,127.0	90.66	154.51	7,793.7	-4,580.7	-1,384.8	377,337.83	1,749,819.17	39° 31' 57.441 N	80° 23' 13.230 W
12,222.0	90.50	155.11	7,792.8	-4,666.7	-1,344.4	377,251.87	1,749,859.60	39° 31' 56.595 N	80° 23' 12.703 W
12,317.0	89.02	153.53	7,793.2	-4,752.3	-1,303.2	377,166.26	1,749,900.77	39° 31' 55.753 N	80° 23' 12.167 W
12,412.0	90.36	157.14	7,793.7	-4,838.6	-1,263.6	377,079.94	1,749,940.40	39° 31' 54.904 N	80° 23' 11.650 W
12,507.0	90.86	155.29	7,792.7	-4,925.5	-1,223.3	376,993.02	1,749,978.71	39° 31' 54.049 N	80° 23' 11.151 W
12,602.0	90.33	155.41	7,791.7	-5,011.9	-1,185.7	376,906.68	1,750,018.33	39° 31' 53.199 N	80° 23' 10.634 W
12,696.0	90.36	156.23	7,791.1	-5,097.6	-1,147.2	376,820.93	1,750,056.83	39° 31' 52.355 N	80° 23' 10.132 W
12,791.0	89.76	154.22	7,791.0	-5,183.9	-1,107.4	376,734.68	1,750,096.64	39° 31' 51.507 N	80° 23' 9.613 W
12,886.0	88.72	154.44	7,792.3	-5,269.5	-1,066.2	376,649.07	1,750,137.79	39° 31' 50.665 N	80° 23' 9.077 W
12,980.0	90.33	154.78	7,793.1	-5,354.4	-1,025.9	376,564.15	1,750,178.09	39° 31' 49.829 N	80° 23' 8.552 W
13,076.0	89.82	153.97	7,792.9	-5,440.9	-984.4	376,477.59	1,750,219.61	39° 31' 48.978 N	80° 23' 8.011 W
13,171.0	91.64	155.58	7,791.7	-5,526.9	-943.9	376,391.67	1,750,260.09	39° 31' 48.133 N	80° 23' 7.484 W
13,266.0	91.53	156.10	7,789.1	-5,613.5	-905.1	376,305.02	1,750,298.96	39° 31' 47.280 N	80° 23' 6.977 W
13,360.0	91.80	154.86	7,786.4	-5,699.0	-866.1	376,219.54	1,750,337.95	39° 31' 46.439 N	80° 23' 6.468 W
13,455.0	90.66	153.97	7,784.3	-5,784.7	-825.0	376,133.87	1,750,378.97	39° 31' 45.596 N	80° 23' 5.934 W
13,550.0	90.70	155.07	7,783.2	-5,870.4	-784.2	376,048.12	1,750,419.83	39° 31' 44.753 N	80° 23' 5.402 W
13,644.0	91.23	155.43	7,781.6	-5,955.8	-744.8	375,962.77	1,750,459.18	39° 31' 43.913 N	80° 23' 4.889 W
13,740.0	91.10	155.48	7,779.7	-6,043.1	-705.0	375,875.46	1,750,499.05	39° 31' 43.054 N	80° 23' 4.369 W
13,834.0	89.62	154.67	7,779.1	-6,128.3	-665.3	375,790.22	1,750,538.66	39° 31' 42.215 N	80° 23' 3.853 W
13,928.0	90.76	155.18	7,778.8	-6,213.5	-625.5	375,705.08	1,750,578.50	39° 31' 41.378 N	80° 23' 3.334 W
14,023.0	90.96	154.98	7,777.3	-6,299.6	-585.5	375,618.94	1,750,618.52	39° 31' 40.530 N	80° 23' 2.812 W
14,118.0	89.18	154.59	7,777.2	-6,385.5	-545.0	375,532.99	1,750,658.99	39° 31' 39.685 N	80° 23' 2.285 W
14,212.0	90.19	154.90	7,777.7	-6,470.6	-504.9	375,447.98	1,750,699.10	39° 31' 38.848 N	80° 23' 1.763 W
14,306.0	90.49	155.49	7,777.2	-6,555.9	-465.5	375,362.65	1,750,738.53	39° 31' 38.009 N	80° 23' 1.249 W
14,401.0	91.06	155.87	7,775.9	-6,642.4	-426.4	375,276.09	1,750,777.65	39° 31' 37.157 N	80° 23' 0.738 W
14,496.0	91.80	157.57	7,773.5	-6,729.7	-388.8	375,188.86	1,750,815.19	39° 31' 36.299 N	80° 23' 0.248 W
14,590.0	90.79	156.04	7,771.4	-6,816.1	-351.8	375,102.48	1,750,852.20	39° 31' 35.449 N	80° 22' 59.765 W
14,685.0	90.86	155.32	7,770.0	-6,902.6	-312.7	375,015.92	1,750,891.32	39° 31' 34.597 N	80° 22' 59.255 W

Survey Report - Geographic

Company:	EQT PRODUCTION	Local Co-ordinate Reference:	Well Elliott 2H L-004604 - Slot Elliott 2H SHL
Project:	Marion County, WV	TVD Reference:	KB@28 @ 1371.0usft
Site:	Elliott Pad	MD Reference:	KB@28 @ 1371.0usft
Well:	Elliott 2H L-004604	North Reference:	Grid
Wellbore:	Main	Survey Calculation Method:	Minimum Curvature
Design:	Elliott 2H As Drilled	Database:	EQT

Survey

Measured Depth (usft)	Inclination (°)	Azimuth (°)	Vertical Depth (usft)	+N/-S (usft)	+E/-W (usft)	Map Northing (usft)	Map Easting (usft)	Latitude	Longitude
14,779.0	91.40	156.16	7,768.2	-6,988.3	-274.1	374,930.24	1,750,929.93	39° 31' 33.754 N	80° 22' 58.752 W
14,874.0	90.69	155.07	7,766.5	-7,074.8	-234.9	374,843.73	1,750,969.15	39° 31' 32.903 N	80° 22' 58.240 W
14,968.0	90.90	154.28	7,765.1	-7,159.8	-194.7	374,758.77	1,751,009.35	39° 31' 32.067 N	80° 22' 57.717 W
15,062.0	91.10	155.43	7,763.5	-7,244.8	-154.7	374,673.70	1,751,049.29	39° 31' 31.230 N	80° 22' 57.196 W
15,157.0	91.03	154.99	7,761.7	-7,331.1	-114.9	374,587.47	1,751,089.11	39° 31' 30.382 N	80° 22' 56.677 W
15,252.0	90.66	154.62	7,760.3	-7,417.0	-74.5	374,501.51	1,751,129.55	39° 31' 29.536 N	80° 22' 56.150 W
15,347.0	89.52	152.33	7,760.2	-7,502.0	-32.0	374,416.52	1,751,171.97	39° 31' 28.700 N	80° 22' 55.598 W
15,441.0	89.72	153.18	7,760.8	-7,585.6	11.0	374,332.95	1,751,215.00	39° 31' 27.878 N	80° 22' 55.039 W
15,536.0	90.73	154.41	7,760.4	-7,670.8	52.9	374,247.72	1,751,256.95	39° 31' 27.040 N	80° 22' 54.493 W
15,631.0	92.47	155.92	7,757.8	-7,757.0	92.8	374,161.55	1,751,296.84	39° 31' 26.192 N	80° 22' 53.973 W
15,725.0	90.26	155.43	7,755.5	-7,842.6	131.5	374,075.92	1,751,335.54	39° 31' 25.350 N	80° 22' 53.468 W
15,820.0	90.49	154.72	7,754.9	-7,928.8	171.6	373,989.77	1,751,375.58	39° 31' 24.502 N	80° 22' 52.947 W
15,914.0	90.76	154.61	7,753.9	-8,013.7	211.8	373,904.82	1,751,415.80	39° 31' 23.666 N	80° 22' 52.423 W
16,009.0	91.37	155.90	7,752.1	-8,100.0	251.5	373,818.56	1,751,455.56	39° 31' 22.818 N	80° 22' 51.905 W
16,103.0	90.53	154.79	7,750.6	-8,185.4	290.7	373,733.14	1,751,494.76	39° 31' 21.977 N	80° 22' 51.394 W
16,198.0	90.93	154.12	7,749.4	-8,271.1	331.7	373,647.43	1,751,535.72	39° 31' 21.134 N	80° 22' 50.860 W
16,291.0	91.30	155.45	7,747.6	-8,355.2	371.3	373,563.31	1,751,575.33	39° 31' 20.307 N	80° 22' 50.344 W
16,386.0	91.73	154.97	7,745.0	-8,441.4	411.1	373,477.10	1,751,615.15	39° 31' 19.458 N	80° 22' 49.825 W
16,481.0	91.23	154.86	7,742.6	-8,527.5	451.4	373,391.09	1,751,655.42	39° 31' 18.612 N	80° 22' 49.301 W
16,575.0	90.73	156.02	7,741.0	-8,612.9	490.5	373,305.61	1,751,694.48	39° 31' 17.771 N	80° 22' 48.792 W
16,670.0	91.33	156.14	7,739.3	-8,699.8	529.0	373,218.78	1,751,732.99	39° 31' 16.917 N	80° 22' 48.289 W
16,764.0	89.62	155.12	7,738.5	-8,785.4	567.8	373,133.16	1,751,771.78	39° 31' 16.074 N	80° 22' 47.784 W
16,858.0	90.63	154.62	7,738.3	-8,870.5	607.7	373,048.06	1,751,811.70	39° 31' 15.237 N	80° 22' 47.264 W
16,952.0	90.96	154.72	7,737.0	-8,955.4	647.9	372,963.11	1,751,851.91	39° 31' 14.401 N	80° 22' 46.740 W
17,047.0	91.43	154.89	7,735.0	-9,041.4	688.3	372,877.16	1,751,892.34	39° 31' 13.556 N	80° 22' 46.213 W
17,141.0	91.13	155.17	7,732.9	-9,126.6	728.0	372,791.97	1,751,932.01	39° 31' 12.718 N	80° 22' 45.696 W
17,236.0	91.50	154.62	7,730.7	-9,212.6	768.3	372,705.97	1,751,972.31	39° 31' 11.871 N	80° 22' 45.171 W
17,331.0	91.40	154.45	7,728.3	-9,298.3	809.1	372,620.23	1,752,013.14	39° 31' 11.028 N	80° 22' 44.640 W
17,425.0	90.93	154.73	7,726.4	-9,383.2	849.5	372,535.34	1,752,053.47	39° 31' 10.193 N	80° 22' 44.114 W
17,519.0	90.86	155.09	7,724.9	-9,468.3	889.3	372,450.22	1,752,093.32	39° 31' 9.355 N	80° 22' 43.595 W
17,614.0	91.20	154.46	7,723.2	-9,554.2	929.8	372,364.29	1,752,133.80	39° 31' 8.510 N	80° 22' 43.068 W
17,707.0	89.92	153.53	7,722.3	-9,637.8	970.6	372,280.71	1,752,174.57	39° 31' 7.688 N	80° 22' 42.537 W
17,801.0	90.09	153.95	7,722.3	-9,722.1	1,012.2	372,196.42	1,752,216.16	39° 31' 6.859 N	80° 22' 41.996 W
17,896.0	90.15	153.42	7,722.1	-9,807.3	1,054.3	372,111.26	1,752,258.28	39° 31' 6.021 N	80° 22' 41.448 W
17,990.0	90.42	155.48	7,721.7	-9,892.1	1,094.8	372,026.46	1,752,298.82	39° 31' 5.187 N	80° 22' 40.920 W
18,084.0	90.02	154.48	7,721.3	-9,977.3	1,134.6	371,941.28	1,752,338.57	39° 31' 4.349 N	80° 22' 40.392 W
18,179.0	88.48	152.97	7,722.5	-10,062.4	1,176.6	371,856.11	1,752,380.62	39° 31' 3.511 N	80° 22' 39.855 W
18,273.0	88.95	153.60	7,724.6	-10,146.4	1,218.9	371,772.17	1,752,422.87	39° 31' 2.686 N	80° 22' 39.306 W
18,367.0	88.61	154.05	7,726.6	-10,230.7	1,260.3	371,687.82	1,752,464.32	39° 31' 1.856 N	80° 22' 38.766 W
18,461.0	89.25	155.16	7,728.4	-10,315.6	1,300.6	371,602.92	1,752,504.63	39° 31' 1.021 N	80° 22' 38.241 W
18,556.0	88.98	155.37	7,729.9	-10,401.9	1,340.4	371,516.65	1,752,544.37	39° 31' 0.172 N	80° 22' 37.723 W
18,650.0	88.91	154.98	7,731.6	-10,487.2	1,379.8	371,431.35	1,752,583.83	39° 30' 59.333 N	80° 22' 37.209 W
18,745.0	88.85	155.37	7,733.5	-10,573.4	1,419.7	371,345.15	1,752,623.71	39° 30' 58.485 N	80° 22' 36.690 W
18,839.0	87.91	155.31	7,736.1	-10,658.8	1,458.9	371,259.75	1,752,662.91	39° 30' 57.645 N	80° 22' 36.179 W
18,934.0	89.62	155.24	7,738.2	-10,745.1	1,498.6	371,173.49	1,752,702.64	39° 30' 56.796 N	80° 22' 35.661 W
19,028.0	88.75	155.87	7,739.5	-10,830.6	1,537.5	371,087.92	1,752,741.53	39° 30' 55.954 N	80° 22' 35.154 W
19,123.0	87.34	154.12	7,742.7	-10,916.7	1,577.6	371,001.88	1,752,781.66	39° 30' 55.107 N	80° 22' 34.632 W
19,217.0	88.18	155.16	7,746.4	-11,001.5	1,617.9	370,917.01	1,752,821.89	39° 30' 54.272 N	80° 22' 34.108 W
19,312.0	87.94	154.44	7,749.6	-11,087.4	1,658.3	370,831.10	1,752,862.32	39° 30' 53.427 N	80° 22' 33.581 W
19,406.0	86.70	155.35	7,754.0	-11,172.5	1,698.1	370,746.07	1,752,902.15	39° 30' 52.591 N	80° 22' 33.062 W
19,500.0	87.94	156.69	7,758.4	-11,258.3	1,736.3	370,660.29	1,752,940.31	39° 30' 51.747 N	80° 22' 32.565 W
19,595.0	87.61	154.28	7,762.1	-11,344.6	1,775.7	370,573.92	1,752,979.70	39° 30' 50.897 N	80° 22' 32.051 W
19,690.0	88.61	154.84	7,765.2	-11,430.4	1,816.5	370,488.18	1,753,020.48	39° 30' 50.053 N	80° 22' 31.520 W
19,784.0	88.11	155.44	7,767.9	-11,515.6	1,856.0	370,402.93	1,753,059.99	39° 30' 49.214 N	80° 22' 31.006 W
19,879.0	88.11	155.34	7,771.1	-11,601.9	1,895.5	370,316.60	1,753,099.53	39° 30' 48.365 N	80° 22' 30.490 W

Survey Report - Geographic

Company:	EQT PRODUCTION	Local Co-ordinate Reference:	Well Elliott 2H L-004604 - Slot Elliott 2H SHL
Project:	Marion County, WV	TVD Reference:	KB@28 @ 1371.0usft
Site:	Elliott Pad	MD Reference:	KB@28 @ 1371.0usft
Well:	Elliott 2H L-004604	North Reference:	Grid
Wellbore:	Main	Survey Calculation Method:	Minimum Curvature
Design:	Elliott 2H As Drilled	Database:	EQT

Survey

Measured Depth (usft)	Inclination (°)	Azimuth (°)	Vertical Depth (usft)	+N/-S (usft)	+E/-W (usft)	Map Northing (usft)	Map Easting (usft)	Latitude	Longitude
19,973.0	88.95	156.92	7,773.5	-11,687.9	1,933.5	370,230.67	1,753,137.55	39° 30' 47.519 N	80° 22' 29.995 W
20,067.0	89.52	155.09	7,774.7	-11,773.7	1,971.8	370,144.81	1,753,175.77	39° 30' 46.675 N	80° 22' 29.496 W
20,162.0	89.59	155.54	7,775.5	-11,860.0	2,011.4	370,058.49	1,753,215.44	39° 30' 45.825 N	80° 22' 28.979 W
20,256.0	89.72	154.77	7,776.0	-11,945.3	2,050.9	369,973.20	1,753,254.94	39° 30' 44.986 N	80° 22' 28.465 W
20,351.0	89.62	155.32	7,776.6	-12,031.5	2,091.0	369,887.07	1,753,295.02	39° 30' 44.139 N	80° 22' 27.943 W
20,445.0	89.58	154.55	7,777.2	-12,116.6	2,130.8	369,801.92	1,753,334.84	39° 30' 43.301 N	80° 22' 27.424 W
20,540.0	89.52	154.88	7,778.0	-12,202.5	2,171.4	369,716.03	1,753,375.42	39° 30' 42.456 N	80° 22' 26.896 W
20,635.0	89.42	155.20	7,778.9	-12,288.6	2,211.5	369,629.90	1,753,415.50	39° 30' 41.609 N	80° 22' 26.374 W
20,729.0	89.45	155.25	7,779.8	-12,374.0	2,250.9	369,544.56	1,753,454.89	39° 30' 40.769 N	80° 22' 25.860 W
20,823.0	89.35	154.79	7,780.8	-12,459.2	2,290.6	369,459.36	1,753,494.59	39° 30' 39.931 N	80° 22' 25.343 W
20,918.0	89.89	155.19	7,781.4	-12,545.3	2,330.7	369,373.27	1,753,534.75	39° 30' 39.084 N	80° 22' 24.820 W
21,013.0	89.85	154.96	7,781.6	-12,631.4	2,370.8	369,287.12	1,753,574.78	39° 30' 38.236 N	80° 22' 24.299 W
21,107.0	89.95	155.31	7,781.8	-12,716.7	2,410.3	369,201.83	1,753,614.31	39° 30' 37.397 N	80° 22' 23.784 W
21,201.0	90.05	154.64	7,781.8	-12,801.9	2,450.1	369,116.65	1,753,654.07	39° 30' 36.559 N	80° 22' 23.266 W
21,297.0	90.02	155.28	7,781.7	-12,888.9	2,490.7	369,029.68	1,753,694.70	39° 30' 35.703 N	80° 22' 22.737 W
21,391.0	89.55	155.11	7,782.1	-12,974.2	2,530.1	368,944.35	1,753,734.14	39° 30' 34.864 N	80° 22' 22.223 W
21,485.0	89.78	153.07	7,782.6	-13,058.7	2,571.2	368,859.81	1,753,775.21	39° 30' 34.032 N	80° 22' 21.689 W
21,579.0	91.06	155.38	7,781.9	-13,143.4	2,612.1	368,775.17	1,753,816.08	39° 30' 33.199 N	80° 22' 21.157 W
21,674.0	90.89	155.32	7,780.3	-13,229.7	2,651.7	368,688.84	1,753,855.70	39° 30' 32.350 N	80° 22' 20.641 W
21,768.0	91.03	154.64	7,778.7	-13,314.9	2,691.4	368,603.67	1,753,895.45	39° 30' 31.512 N	80° 22' 20.123 W
21,862.0	90.42	154.86	7,777.6	-13,399.9	2,731.5	368,518.66	1,753,935.54	39° 30' 30.676 N	80° 22' 19.601 W
21,957.0	90.93	154.96	7,776.4	-13,485.9	2,771.8	368,432.63	1,753,975.82	39° 30' 29.829 N	80° 22' 19.076 W
22,052.0	90.66	155.28	7,775.1	-13,572.1	2,811.8	368,346.45	1,754,015.79	39° 30' 28.981 N	80° 22' 18.556 W
22,146.0	91.09	154.82	7,773.7	-13,657.3	2,851.4	368,261.24	1,754,055.43	39° 30' 28.143 N	80° 22' 18.039 W
22,240.0	91.06	155.12	7,771.9	-13,742.5	2,891.2	368,176.08	1,754,095.20	39° 30' 27.305 N	80° 22' 17.521 W
22,335.0	91.19	155.41	7,770.1	-13,828.7	2,930.9	368,089.81	1,754,134.94	39° 30' 26.456 N	80° 22' 17.004 W
22,429.0	90.49	154.80	7,768.7	-13,914.0	2,970.5	368,004.56	1,754,174.50	39° 30' 25.617 N	80° 22' 16.488 W
22,523.0	90.79	155.58	7,767.6	-13,999.3	3,009.9	367,919.24	1,754,213.95	39° 30' 24.778 N	80° 22' 15.975 W
22,618.0	91.86	154.59	7,765.4	-14,085.4	3,049.9	367,833.11	1,754,253.95	39° 30' 23.930 N	80° 22' 15.453 W
22,713.0	91.43	154.84	7,762.7	-14,171.3	3,090.5	367,747.24	1,754,294.51	39° 30' 23.086 N	80° 22' 14.925 W
22,807.0	90.82	154.63	7,760.9	-14,256.3	3,130.6	367,662.25	1,754,334.63	39° 30' 22.250 N	80° 22' 14.403 W
22,901.0	90.96	155.32	7,759.4	-14,341.5	3,170.4	367,577.09	1,754,374.38	39° 30' 21.412 N	80° 22' 13.885 W
22,995.0	91.53	155.49	7,757.4	-14,426.9	3,209.5	367,491.64	1,754,413.50	39° 30' 20.571 N	80° 22' 13.376 W
23,090.0	91.23	155.25	7,755.1	-14,513.2	3,249.1	367,405.30	1,754,453.08	39° 30' 19.721 N	80° 22' 12.860 W
23,184.0	91.43	155.55	7,752.9	-14,598.7	3,288.2	367,319.86	1,754,492.20	39° 30' 18.881 N	80° 22' 12.351 W
23,279.0	91.33	154.70	7,750.6	-14,684.8	3,328.1	367,233.70	1,754,532.15	39° 30' 18.033 N	80° 22' 11.830 W
23,373.0	92.23	154.79	7,747.7	-14,769.8	3,368.2	367,148.73	1,754,572.23	39° 30' 17.197 N	80° 22' 11.308 W
23,468.0	90.72	153.28	7,745.2	-14,855.2	3,409.8	367,063.35	1,754,613.81	39° 30' 16.357 N	80° 22' 10.767 W
23,562.0	91.76	154.17	7,743.2	-14,939.5	3,451.4	366,979.08	1,754,655.41	39° 30' 15.528 N	80° 22' 10.226 W
23,657.0	92.84	154.73	7,739.4	-15,025.1	3,492.3	366,893.44	1,754,696.35	39° 30' 14.686 N	80° 22' 9.693 W
23,751.0	92.97	156.19	7,734.6	-15,110.5	3,531.3	366,808.05	1,754,735.34	39° 30' 13.845 N	80° 22' 9.185 W
23,846.0	92.27	154.98	7,730.3	-15,196.9	3,570.6	366,721.63	1,754,774.57	39° 30' 12.995 N	80° 22' 8.674 W
23,940.0	92.30	155.49	7,726.5	-15,282.2	3,609.9	366,636.35	1,754,813.91	39° 30' 12.156 N	80° 22' 8.162 W
24,035.0	92.57	155.36	7,722.5	-15,368.5	3,649.4	366,550.03	1,754,853.38	39° 30' 11.307 N	80° 22' 7.648 W
24,131.0	92.54	155.12	7,718.2	-15,455.6	3,689.5	366,462.94	1,754,893.55	39° 30' 10.450 N	80° 22' 7.124 W
24,225.0	92.44	155.74	7,714.1	-15,541.0	3,728.6	366,377.53	1,754,932.60	39° 30' 9.609 N	80° 22' 6.616 W
24,320.0	92.33	155.36	7,710.2	-15,627.4	3,767.9	366,291.13	1,754,971.89	39° 30' 8.759 N	80° 22' 6.104 W
24,415.0	92.94	154.23	7,705.8	-15,713.3	3,808.3	366,205.27	1,755,012.30	39° 30' 7.914 N	80° 22' 5.578 W
24,509.0	91.93	154.18	7,701.8	-15,797.8	3,849.2	366,120.71	1,755,053.16	39° 30' 7.082 N	80° 22' 5.046 W
24,604.0	91.23	154.23	7,699.2	-15,883.3	3,890.5	366,035.21	1,755,094.49	39° 30' 6.241 N	80° 22' 4.508 W
24,698.0	91.53	156.01	7,696.9	-15,968.6	3,930.0	365,949.96	1,755,134.02	39° 30' 5.403 N	80° 22' 3.993 W
24,792.0	91.43	154.55	7,694.5	-16,053.9	3,969.3	365,864.61	1,755,173.32	39° 30' 4.563 N	80° 22' 3.482 W
24,887.0	91.36	155.47	7,692.2	-16,140.0	4,009.4	365,778.53	1,755,213.44	39° 30' 3.716 N	80° 22' 2.959 W
24,982.0	91.50	154.27	7,689.8	-16,226.0	4,049.8	365,692.55	1,755,253.77	39° 30' 2.870 N	80° 22' 2.434 W
25,076.0	90.69	154.28	7,688.0	-16,310.7	4,090.5	365,607.88	1,755,294.56	39° 30' 2.037 N	80° 22' 1.903 W

Survey Report - Geographic

Company:	EQT PRODUCTION	Local Co-ordinate Reference:	Well Elliott 2H L-004604 - Slot Elliott 2H SHL
Project:	Marion County, WV	TVD Reference:	KB@28 @ 1371.0usft
Site:	Elliott Pad	MD Reference:	KB@28 @ 1371.0usft
Well:	Elliott 2H L-004604	North Reference:	Grid
Wellbore:	Main	Survey Calculation Method:	Minimum Curvature
Design:	Elliott 2H As Drilled	Database:	EQT

Survey

Measured Depth (usft)	Inclination (°)	Azimuth (°)	Vertical Depth (usft)	+N/-S (usft)	+E/-W (usft)	Map Northing (usft)	Map Easting (usft)	Latitude	Longitude
25,171.0	90.62	154.74	7,686.9	-16,396.4	4,131.4	365,522.13	1,755,335.44	39° 30' 1.193 N	80° 22' 1.371 W
25,266.0	91.19	154.94	7,685.4	-16,482.4	4,171.8	365,436.16	1,755,375.83	39° 30' 0.347 N	80° 22' 0.845 W
25,361.0	91.56	155.17	7,683.2	-16,568.5	4,211.9	365,350.05	1,755,415.88	39° 29' 59.500 N	80° 22' 0.324 W
25,455.0	91.33	154.74	7,680.8	-16,653.6	4,251.6	365,264.91	1,755,455.66	39° 29' 58.663 N	80° 21' 59.806 W
25,549.0	91.56	154.80	7,678.4	-16,738.6	4,291.7	365,179.91	1,755,495.72	39° 29' 57.826 N	80° 21' 59.284 W
25,645.0	91.23	154.70	7,676.1	-16,825.4	4,332.6	365,093.10	1,755,536.66	39° 29' 56.972 N	80° 21' 58.752 W
25,740.0	91.03	154.26	7,674.2	-16,911.2	4,373.6	365,007.39	1,755,577.58	39° 29' 56.129 N	80° 21' 58.219 W
25,834.0	91.19	154.55	7,672.4	-16,995.9	4,414.2	364,922.63	1,755,618.18	39° 29' 55.295 N	80° 21' 57.691 W
25,929.0	91.06	154.88	7,670.5	-17,081.8	4,454.7	364,836.75	1,755,658.75	39° 29' 54.450 N	80° 21' 57.163 W
26,023.0	90.92	155.23	7,668.9	-17,167.0	4,494.4	364,751.53	1,755,698.38	39° 29' 53.612 N	80° 21' 56.646 W
26,118.0	90.86	155.16	7,667.4	-17,253.2	4,534.2	364,665.30	1,755,738.23	39° 29' 52.763 N	80° 21' 56.127 W
26,212.0	90.72	155.07	7,666.1	-17,338.5	4,573.8	364,580.04	1,755,777.79	39° 29' 51.924 N	80° 21' 55.612 W
26,307.0	90.42	155.08	7,665.2	-17,424.6	4,613.8	364,493.89	1,755,817.82	39° 29' 51.077 N	80° 21' 55.091 W
26,401.0	91.13	156.19	7,663.9	-17,510.3	4,652.6	364,408.27	1,755,856.60	39° 29' 50.234 N	80° 21' 54.586 W
26,496.0	90.66	155.05	7,662.4	-17,596.8	4,691.8	364,321.76	1,755,895.80	39° 29' 49.383 N	80° 21' 54.075 W
26,591.0	91.13	156.21	7,660.9	-17,683.3	4,731.0	364,235.23	1,755,935.00	39° 29' 48.531 N	80° 21' 53.565 W
26,685.0	90.42	154.41	7,659.7	-17,768.7	4,770.2	364,149.84	1,755,974.26	39° 29' 47.691 N	80° 21' 53.053 W
26,717.0	90.42	154.41	7,659.4	-17,797.6	4,784.1	364,120.98	1,755,988.08	39° 29' 47.407 N	80° 21' 52.873 W

TD at 26717.0 MD_7659.4 TVD

Design Targets

Target Name	- hit/miss target	- Shape	Dip Angle (°)	Dip Dir. (°)	TVD (usft)	+N/-S (usft)	+E/-W (usft)	Northing (usft)	Easting (usft)	Latitude	Longitude
Elliot_C_2H_(1)Surface	- actual wellpath hits target center	- Point	0.00	0.56	0.0	0.0	0.0	381,918.54	1,751,204.01	39° 32' 42.849 N	80° 22' 56.130 W
Elliot_C_2H_(3)Bottom	- actual wellpath hits target center	- Point	0.00	360.00	7,659.4	-17,797.6	4,784.1	364,120.98	1,755,988.08	39° 29' 47.407 N	80° 21' 52.873 W
Elliot_C_2H_(2)Landing	- actual wellpath hits target center	- Point	0.00	0.00	7,820.8	-2,033.0	-2,647.5	379,885.50	1,748,556.50	39° 32' 22.497 N	80° 23' 29.668 W



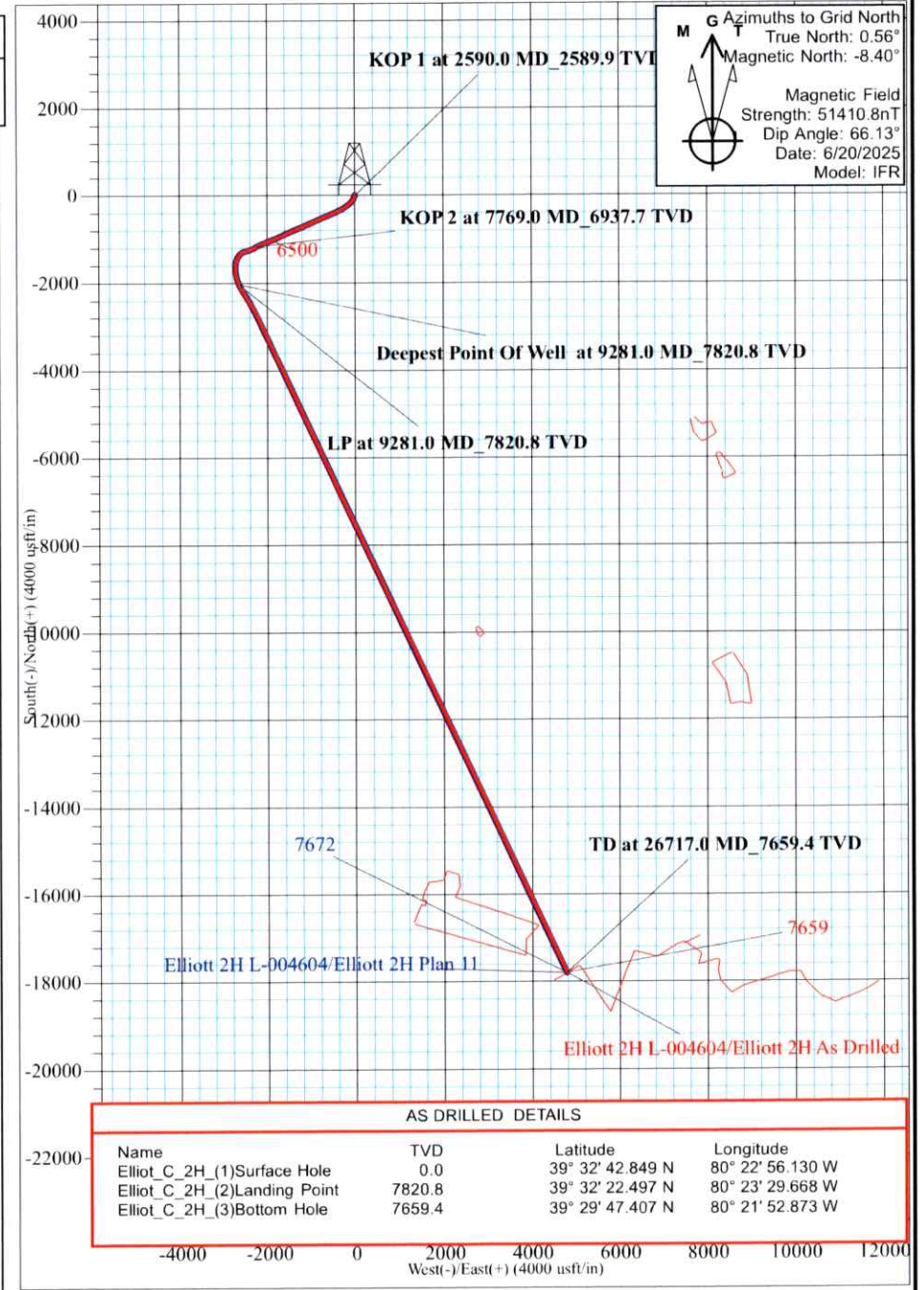
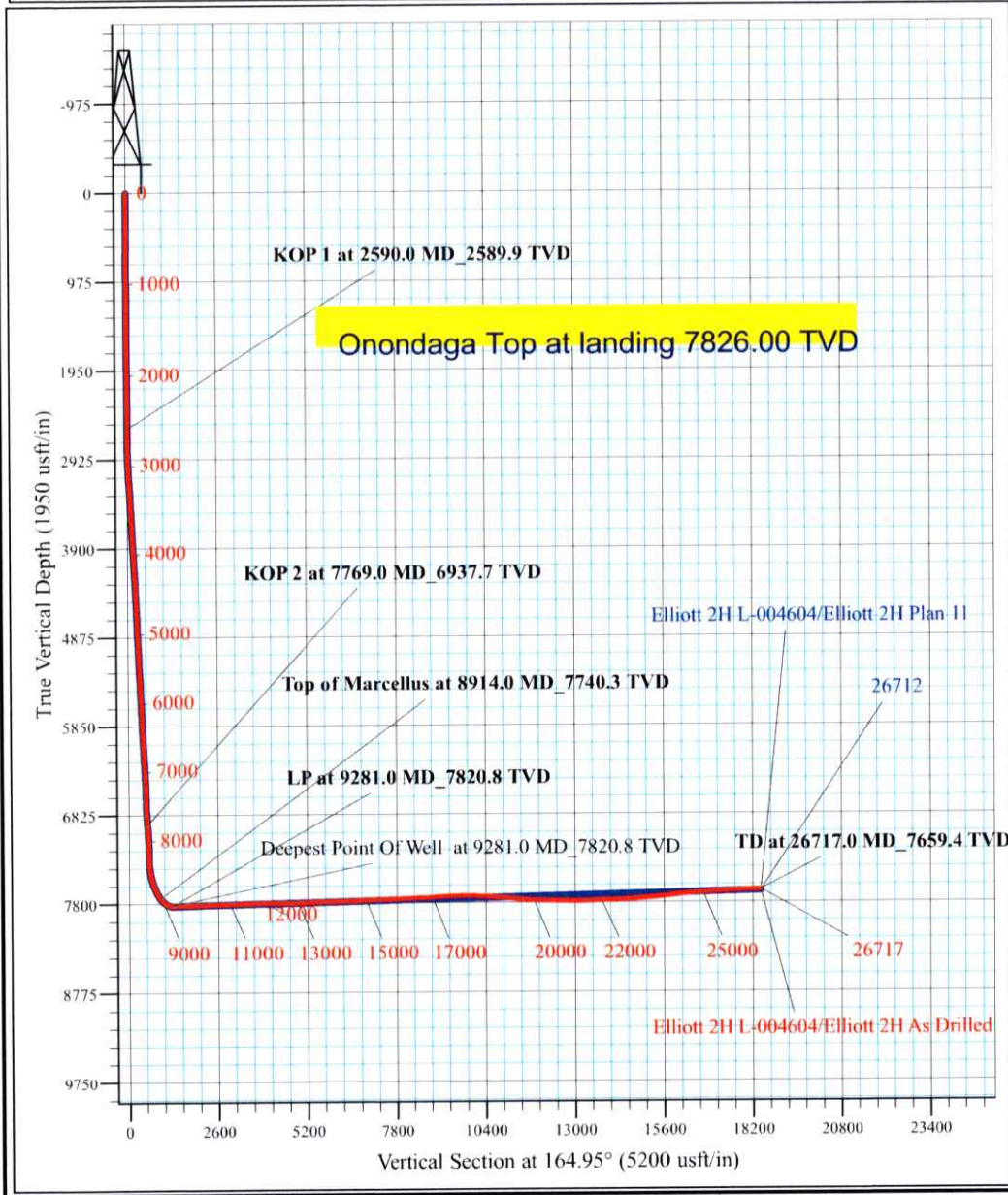
Elliott Pad
 Elliott 2H As Drilled
 KB@28 @ 1371.0usft
 Marion County, WV
 Main

PROJECT DETAILS:
 Geodetic System: US State Plane 1927 (Exact solution)
 Datum: NAD 1927 (NADCON CONUS)
 Ellipsoid: Clarke 1866
 Zone: West Virginia North 4701
 System Datum: Mean Sea Level



WELL DETAILS: Elliott 2H L-004604

+N/-S	+E/-W	Northing	Easting	Latitude	Longitude
0.0	0.0	381918.54	1751204.01	39° 32' 42.849 N	80° 22' 56.130 W



M G T Azimuths to Grid North
 True North: 0.56°
 Magnetic North: -8.40°

Magnetic Field
 Strength: 51410.8nT
 Dip Angle: 66.13°
 Date: 6/20/2025
 Model: IFR

Name	TVD	Latitude	Longitude
Elliott_C_2H_(1)Surface Hole	0.0	39° 32' 42.849 N	80° 22' 56.130 W
Elliott_C_2H_(2)Landing Point	7820.8	39° 32' 22.497 N	80° 23' 29.668 W
Elliott_C_2H_(3)Bottom Hole	7659.4	39° 29' 47.407 N	80° 21' 52.873 W