

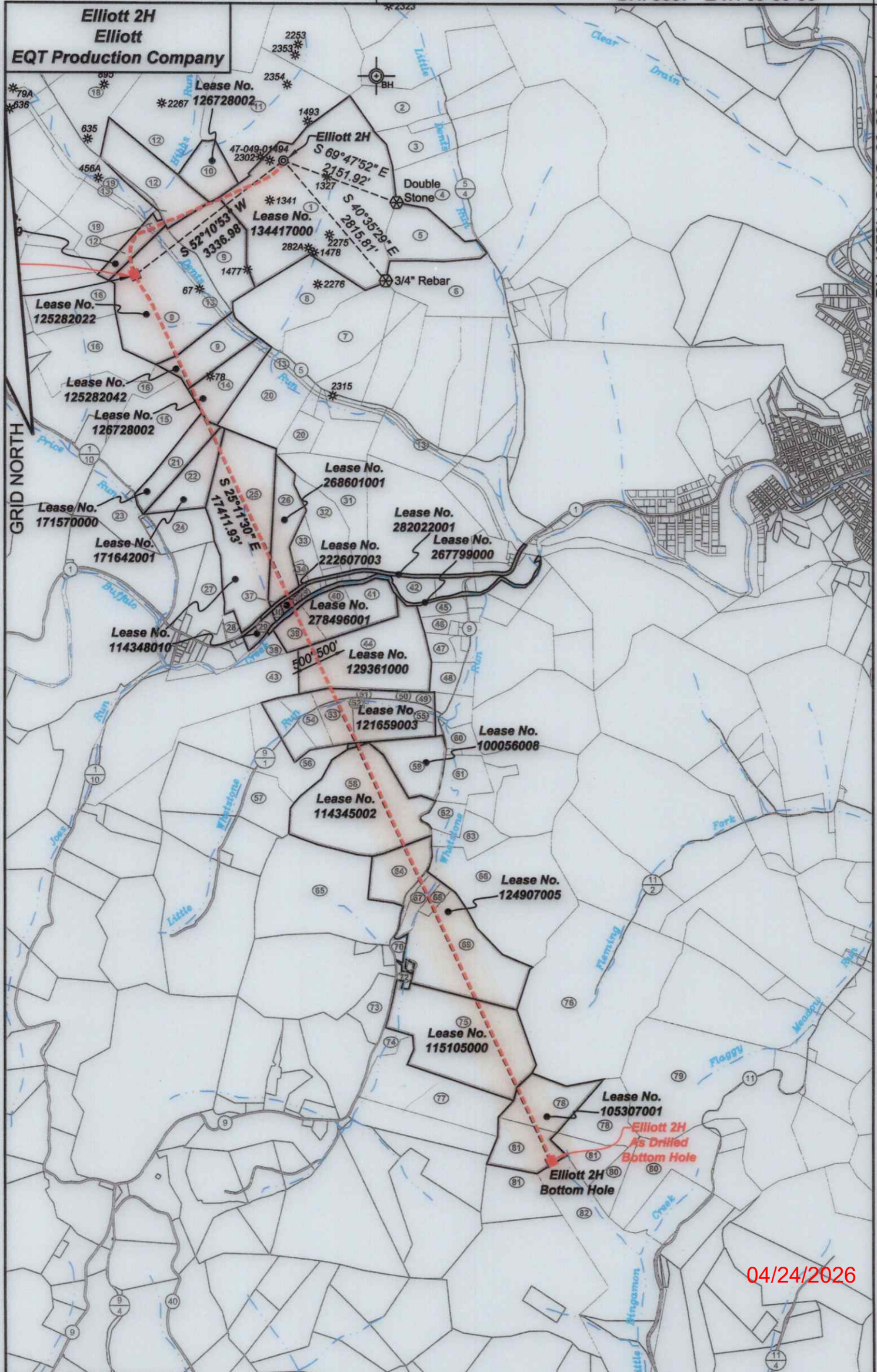


BH: 8857' LAT: 39-30-00

BH: 1279' LONG: 80-20-00

**Elliott 2H**  
**Elliott**  
**EQT Production Company**

GRID NORTH



- ⊙ Proposed Gas Well
- Located Corner, as noted
- Surface Tract Lines
- - - Reference Line
- Lease Boundary
- Creek or Drain
- ⊙ WV County Route
- ⊙ WV State Route

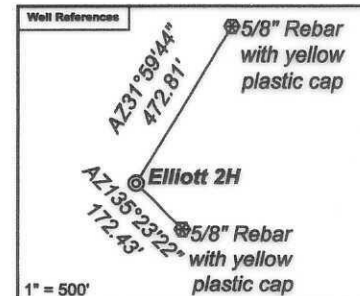
(⊙) Denotes Location of Well on United States Topographic Maps

04/24/2026

**Elliott 2H**  
**Elliott**  
**EQT Production Company**

Tract I.D.	Tax Map No.	Parcel No.	County	District	Surface Tract Owner	Acres
1	34	40	Marion	Mannington	Marion County Coal Resources Inc.	153.25
2	34	49	Marion	Mannington	Thomas D. & Aimee J. Haught	24.78
3	34	47	Marion	Mannington	Edward F. Price	23
4	33	1	Marion	Mannington	Thomas D. & Aimee J. Haught	106.823
5	34	40.1	Marion	Mannington	Betty J. Fluharty	29.75
6	34	45	Marion	Mannington	City of Mannington	42.5
7	34	41	Marion	Mannington	Marion County Coal Resources Inc.	47
8	34	39	Marion	Mannington	Marion County Coal Resources Inc.	42.75
9	34	33	Marion	Mannington	Marion County Coal Resources Inc.	134
10	34	38	Marion	Mannington	Marion County Coal Resources Inc.	17
11	34	37	Marion	Mannington	Marion County Coal Resources Inc.	133.37
12	34	36	Marion	Mannington	Marion County Coal Resources Inc.	120
13	34	52	Marion	Mannington	CSX Transportation	12.62
14	34	32	Marion	Mannington	Marion County Coal Resources Inc.	22.25
15	34	1	Marion	Mannington	Carol J. Murphy	52
16	35	9	Marion	Mannington	Harrison County Coal Resources Inc.	125.75
17	36	20	Marion	Mannington	Marion County Coal Resources Inc.	131.1
18	46	19	Marion	Mannington	Marion County Coal Resources Inc.	174.4
19	34	34	Marion	Mannington	Marion County Coal Resources Inc.	48.85
20	34	31	Marion	Mannington	Consolidation Coal Company	NA
21	34	2	Marion	Mannington	Mike Ross Inc.	18
22	34	3	Marion	Mannington	Mike Ross Inc.	19
23	35	7.1	Marion	Mannington	Dennis R. & Donna M. Carl	36.411
24	34	4.3	Marion	Mannington	Mike Ross Inc.	15.5
25	34	4	Marion	Mannington	Richard N. & Doretta A. Malone	71.66
26	34	14	Marion	Mannington	Perry R. Thorne Jr.	24.82
27	34	8	Marion	Mannington	William J. & Wenna N. Lattea	18.01
28	34	12	Marion	Mannington	Steven R. & Pamela J. George	3.36
29	65	11	Marion	Mannington	John F. Porter Jr.	4.34
30	65	10.1	Marion	Mannington	John J. Michael	0.99
31	34	16	Marion	Mannington	Michael R. & Lou Ann Harris	35.5239
32	34	15	Marion	Mannington	James C. & Emma J. Riggs	21.185
33	34	15.7	Marion	Mannington	Perry R. Thorne Jr.	8.053
34	34	15.1	Marion	Mannington	Kelly D. & Deborah Knight	2.02
35	65	9	Marion	Mannington	Katherine N. & William R. Edgell	0.9
36	65	9.1	Marion	Mannington	David J. Michael	0.9
37	65	10	Marion	Mannington	Christine L. Fragle, et al.	0.96
38	65	12	Marion	Mannington	Charles E. & Charlotte M. Rexrud	14.43
39	65	8.1	Marion	Mannington	Consolidation Coal Company	10.68
40	65	8.2	Marion	Mannington	Jose L. Pena Jr	13.98
41	65	8	Marion	Mannington	Jose L. Pena Jr	13.98
42	34	17	Marion	Mannington	Vicki L. Gripper, et al.	86.59
43	65	19	Marion	Mannington	Dianne R. Lutz	91.34
44	65	1	Marion	Mannington	Ricky L. Rinehart	65.25
45	65	6.2	Marion	Mannington	Michelle & Scott Williams	4.92
46	65	6	Marion	Mannington	Jennifer A. Barker	4.62
47	65	2	Marion	Mannington	Ricky L. Rinehart	6
48	65	49	Marion	Mannington	Nelson W. & Carmen G. Hays	19.35
49	65	48.1	Marion	Mannington	Nelson W. & Carmen G. Hays	2
50	65	48	Marion	Mannington	Thomas D. Walls	0.8624
51	65	47	Marion	Mannington	Joseph S. Rinehart	7.75
52	65	38	Marion	Mannington	Franklin D. & Juanita D. Rinehart	0.95
53	65	39	Marion	Mannington	Joseph S. Rinehart	9.15
54	65	19.1	Marion	Mannington	Susie Talkington	11.73
55	65	37	Marion	Mannington	Joseph R. Elliott	19.97
56	65	40	Marion	Mannington	Richard C. Shaver	24.5
57	65	44.1	Marion	Mannington	Kathern Loss	15.86
58	65	34	Marion	Mannington	Richard L. & Lone J. Powell	74.9
59	67	7	Marion	Mannington	Howard R. & Eldora G. Masters	23.33
60	67	5.1	Marion	Mannington	State Soil Conservation Commission	8.37
61	67	6	Marion	Mannington	State Soil Conservation Commission	18.5
62	65	34.1	Marion	Mannington	State Soil Conservation Commission	9
63	67	8	Marion	Mannington	State Soil Conservation Commission	13.6
64	65	50	Marion	Mannington	Celaine Haught	44.99
65	65	33	Marion	Mannington	Celaine Haught	82.63
66	67	9	Marion	Mannington	State Soil Conservation Commission	94.8
67	67	10.3	Marion	Mannington	State Soil Conservation Commission	8.25
68	67	10.11	Marion	Mannington	Lloyd L. & Sunday R. Barker	3.109
69	67	10.1	Marion	Mannington	Lloyd L. & Sunday R. Barker	46.39
70	67	11	Marion	Mannington	Timothy G. & Carolyn L. Carnes	1.38
71	67	10.1	Marion	Mannington	Sturm Barker	0.61
72	67	14.1	Marion	Mannington	Sharon K. Lawson	1
73	67	15.1	Marion	Mannington	Charles E. & Andrea J. Hayes	11.25
74	67	15	Marion	Mannington	Christopher & Lori Mayo	3.12
75	67	14	Marion	Mannington	Lloyd L. & Sunday R. Barker	71.2
76	68	4	Marion	Mannington	Robert E. & Horence J. Masters	139
77	67	16	Marion	Mannington	Patrick & Sheena McKone	55.458
78	66	11.1	Marion	Mannington	Michael L. & Billie J. Shearer	47.68
79	68	5	Marion	Mannington	DIM Appalachia Gathering LLC	84.26
80	66	12	Marion	Mannington	Michael L. & Billie J. Shearer	47.17
81	66	11	Marion	Mannington	Michael L. & Billie J. Shearer	59.19
82	66	9	Marion	Mannington	Henry O. & Lynn M. Desnos	62.27

**As Drilled Well Information:**  
**Elliott 2H coordinates are**  
 NAD 27 N: 381,918.54 E: 1,751,204.01  
 NAD 83 UTM N: 4,377,476.40 E: 553,095.06  
**Elliott 2H Landing Point coordinates are**  
 NAD 27 N: 379,885.50 E: 1,748,556.50  
 NAD 83 UTM N: 4,376,843.55 E: 552,298.77  
**Elliott 2H Bottom Hole coordinates are**  
 NAD 27 N: 364,120.98 E: 1,755,988.08  
 NAD 83 UTM N: 4,372,078.40 E: 554,642.87  
 West Virginia Coordinate system of 1927 (North Zone) based upon Differential GPS Measurements. Plat orientation, corner and well ties are based upon the grid north meridian.  
 Well location references are based upon the grid north meridian.  
 UTM coordinates are NAD83, Zone 17, Meters.



- Elliott**
- Elliott 17H 47-049-02506
  - Elliott 15H 47-049-02505
  - Elliott 13H 47-049-02504
  - Elliott 11H 47-049-02503
  - Elliott 9H 47-049-02498
  - Elliott 7H 47-049-02502
  - Elliott 5H 47-049-02501
  - Elliott 3H 47-049-02500
  - Elliott 1H 47-049-02499
  - Elliott 16H 47-049-02560
  - Elliott 14H 47-049-02559
  - Elliott 12H 47-049-02558
  - Elliott 10H 47-049-02557
  - Elliott 8H 47-049-02556
  - Elliott 6H 47-049-02555
  - Elliott 4H 47-049-02554
  - Elliott 2H 47-049-02553

Lease No.	Owner	Acres
134417000	Randy J. Elliott, et al.	183
125282029	Big Sand Drilling Company, et al.	42
125282022	Lee and Hall Royalties, et al.	109.25
125282042	Norman J. Urdiales, et al.	24.75
126728002	Country Roads Minerals, LLC, et al.	39.25
171570000	Country Roads Minerals, LLC	33.5
171642001	XTO Energy Inc.	19 ac of 512.948872
114348010	Country Roads Minerals, LLC, et al.	75
268801001	EQT Production Company	24
282022001	West Virginia Department of Transportation, Division of Highways	7.24
222607003	EQT Production Company, et al.	0.96
267799000	West Virginia Department of Natural Resources	25.2677
278496001	Country Roads Minerals, LLC, et al.	40.75
129381000	Stephen G. Sinclair Jr. and Robin S. Sinclair Family Trust	85.5
114345002	Country Roads Minerals, LLC, et al.	80
100056008	Country Roads Minerals, LLC, et al.	23.33
114345002	Bounty Minerals, LLC	70
124907005	XTO Energy Inc., et al.	99
115105000	XTO Energy Inc.	97
105307001	Three Rivers Royalty II, LLC, et al.	50

