

State of West Virginia
Department of Environmental Protection - Office of Oil and Gas
Well Operator's Report of Well Work

API 47 - 049 - 02555 County Marion District Mannington
Quad Glover Gap Pad Name ELLIOTT Field/Pool Name N/A
Farm name Marion County Coal Resources Inc. Well Number Elliott 6H (L003933)
Operator (as registered with the OOG) EQT Production Company
Address 400 Woodcliff Drive City Canonsburg State PA Zip 15317

As Drilled location NAD 83/UTM Attach an as-drilled plat, profile view, and deviation survey
Top hole Northing 4,377,484.88 Easting 553,098.48
Landing Point of Curve Northing 4,377,172.94 Easting 552,820.20
Bottom Hole Northing 4,372,207.47 Easting 555,236.69

Elevation (ft) 1343' GL Type of Well New Existing Type of Report Interim Final
Permit Type Deviated Horizontal Horizontal 6A Vertical Depth Type Deep Shallow
Type of Operation Convert Deepen Drill Plug Back Redrilling Rework Stimulate
Well Type Brine Disposal CBM Gas Oil Secondary Recovery Solution Mining Storage Other _____
Type of Completion Single Multiple Fluids Produced Brine Gas NGL Oil Other _____
Drilled with Cable Rotary

Drilling Media Surface hole Air Mud Fresh Water Intermediate hole Air Mud Fresh Water Brine
Production hole Air Mud Fresh Water Brine

Mud Type(s) and Additive(s)
Synthetic Oil Based Mud 13.24 ppg barium sulfate, sodium chloride, xanthan gum, polyanionic cellulose, modified starch, sodium hydroxide, phosphonates and alkyl phosphates, glutaraldehyde solution, calcium hydroxide, partially hydrolyzed polyacrylamide/polyacrylate, potassium chloride, sodium carbonate, ground walnut shells, alcohol and modified fatty acid, ferrochrome lignosulfonate, calcium carbonate, fibrous cellulose

Date permit issued 08/05/2024 Date drilling commenced 08/13/2024 Date drilling ceased 05/17/2025
Date completion activities began 07/30/2025 Date completion activities ceased 10/20/2025
Verbal plugging (Y/N) N Date permission granted N/A Granted by N/A

Please note: Operator is required to submit a plugging application within 5 days of verbal permission to plug

Freshwater depth(s) ft 190', 275', 326' Open mine(s) (Y/N) depths N
Salt water depth(s) ft 1850' Void(s) encountered (Y/N) depths N
Coal depth(s) ft 858', 953' Cavern(s) encountered (Y/N) depths N
Is coal being mined in area (Y/N) N

RECEIVED
Office of Oil and Gas
JAN 15 2026
Reviewed by: _____
04/24/2026

API 47-049 - 02555 Farm name Marion County Coal Resources Inc. Well number Elliott 6H (L003933)

| CASING STRINGS | Hole Size | Casing Size | Depth (GL) | New or Used | Grade wt/ft | Basket Depth(s) (GL) | Did cement circulate (Y/N) * Provide details below* |
|---------------------------|----------------|-------------|------------|-------------|-------------|----------------------|--|
| Conductor | 30" | 26" | 40' | NEW | A-500 85.6# | N/A | Y |
| Surface | 17-1/2" | 13-3/8" | 1026' | NEW | J-55 54.5# | N/A | Y |
| Coal | | | | | | | |
| Intermediate 1 | 12-3/8" | 9-5/8" | 2506' | NEW | J-55 36# | N/A | Y |
| Intermediate 2 | | | | | | | |
| Intermediate 3 | | | | | | | |
| Production | 8-3/4", 8-1/2" | 5-1/2" | 26,453' | NEW | P-110 20# | N/A | N |
| Tubing | | | | | | | |
| Packer type and depth set | | | | | | | |

Comment Details _____

Production cmt has calculated TOC of 870'GL, which is greater than 500'TVD above the producing formation. No issues

| CEMENT DATA | Class/Type of Cement | Number of Sacks | Slurry wt (ppg) | Yield (ft ³ /sks) | Volume (ft ³) | Cement Top (GL) | WOC (hrs) |
|----------------|----------------------|-----------------|-----------------|------------------------------|---------------------------|-----------------|-----------|
| Conductor | CLASS A | 83 | 15.6 | 1.18 | 98 | 0 | 8+ |
| Surface | CLASS L | 945 | 16.0 | 1.09 | 1030 | 0 | 8 |
| Coal | | | | | | | |
| Intermediate 1 | CLASS L | 900 | 15.6 | 1.13 | 1017 | 0 | 8 |
| Intermediate 2 | | | | | | | |
| Intermediate 3 | | | | | | | |
| Production | CLASS A | 5040 | 15.0 | 1.19 | 5998 | 870' | 8+ |
| Tubing | | | | | | | |

Drillers TD (ft) 26,475' Loggers TD (ft) N/A
 Deepest formation penetrated MARCELLUS Plug back to (ft) N/A
 Plug back procedure N/A

Kick off depth (ft) 2528'

Check all wireline logs run
 caliper density deviated/directional induction
 neutron resistivity gamma ray temperature sonic

Well cored Yes No Conventional Sidewall Were cuttings collected Yes No

DESCRIBE THE CENTRALIZER PLACEMENT USED FOR EACH CASING STRING _____
 CONDUCTOR- NONE _____
 SURFACE- ON SHOE TRACK AND EVERY 500' TO SURFACE _____
 INTERMEDIATE: ON SHOE TRACK AND EVERY 500' FEET TO SURFACE _____
 PRODUCTION: ON SHOE TRACK, EVERY OTHER JOINT TO 8384', EVERY JOINT TO 6235', EVERY OTHER JOINT TO 1931' _____

WAS WELL COMPLETED AS SHOT HOLE Yes No DETAILS _____ RECEIVED
Office of Oil and Gas

WAS WELL COMPLETED OPEN HOLE? Yes No DETAILS _____ JAN 15 2026

WERE TRACERS USED Yes No TYPE OF TRACER(S) USED _____ WV Department of
Environmental Protection

04/24/2026

API 47- 049 - 02555 Farm name Marion County Coal Resources Inc. Well number Elliott 6H (L003933)

Drilling Contractor Falcon (Rig 25)
Address 1120 US-119 City Indiana State PA Zip 15701

Logging Company GyroData
Address 73 Noblestown Road City Carnegie State PA Zip 15106

Logging Company Scientific Drilling International, Inc
Address 3475 Washington Ave City Finleyville State PA Zip 15332

Cementing Company _____
Address _____ City _____ State _____ Zip _____

RECEIVED
Office of Oil and Gas

JAN 15 2026

WV Department of
Environmental Protection

04/24/2026

| Well # ELLIOTT 6H Final Formations API# 47-049-02555 | | | | |
|--|----------------------|-------------------------|----------------------|-------------------------|
| Formation Name | Drill Top MD (ftGRD) | Drill Top (TVD) (ftGRD) | Drill Btm MD (ftGRD) | Drill Btm (TVD) (ftGRD) |
| Sand/Shale | 1 | 1 | 858 | 858 |
| Sewickley Coal | 858 | 858 | 863 | 863 |
| Sand/Shale | 863 | 863 | 953 | 953 |
| Pittsburgh Coal | 953 | 953 | 965 | 965 |
| Sand/Shale | 965 | 965 | 2,395 | 2,395 |
| Big Lime | 2,395 | 2,395 | 2,469 | 2,469 |
| Big Injun | 2,469 | 2,469 | 2,570 | 2,570 |
| Sand/Shale | 2,570 | 2,570 | 3,059 | 3,058 |
| Gantz | 3,059 | 3,058 | 3,113 | 3,112 |
| Sand/Shale | 3,113 | 3,112 | 3,167 | 3,165 |
| 50F | 3,167 | 3,165 | 3,185 | 3,183 |
| Sand/Shale | 3,185 | 3,183 | 3,294 | 3,291 |
| Fifth Sand | 3,294 | 3,291 | 3,346 | 3,343 |
| Sand/Shale | 3,346 | 3,343 | 3,391 | 3,387 |
| Bayard | 3,391 | 3,387 | 3,426 | 3,422 |
| Sand/Shale | 3,426 | 3,422 | 5,803 | 5,723 |
| Alexander | 5,803 | 5,723 | 5,852 | 5,770 |
| Sand/Shale | 5,852 | 5,770 | 6,186 | 6,089 |
| Elks | 6,186 | 6,089 | 7,304 | 7,159 |
| Sonyea | 7,304 | 7,159 | 7,479 | 7,326 |
| Middlesex | 7,479 | 7,326 | 7,592 | 7,429 |
| Genesee | 7,592 | 7,429 | 7,720 | 7,538 |
| Geneseo | 7,720 | 7,538 | 7,767 | 7,574 |
| Tully | 7,767 | 7,574 | 7,809 | 7,605 |
| Hamilton | 7,809 | 7,605 | 7,975 | 7,710 |
| Marcellus | 7,975 | 7,710 | 26,475 | 7,807 |

RECEIVED
Office of Oil and Gas

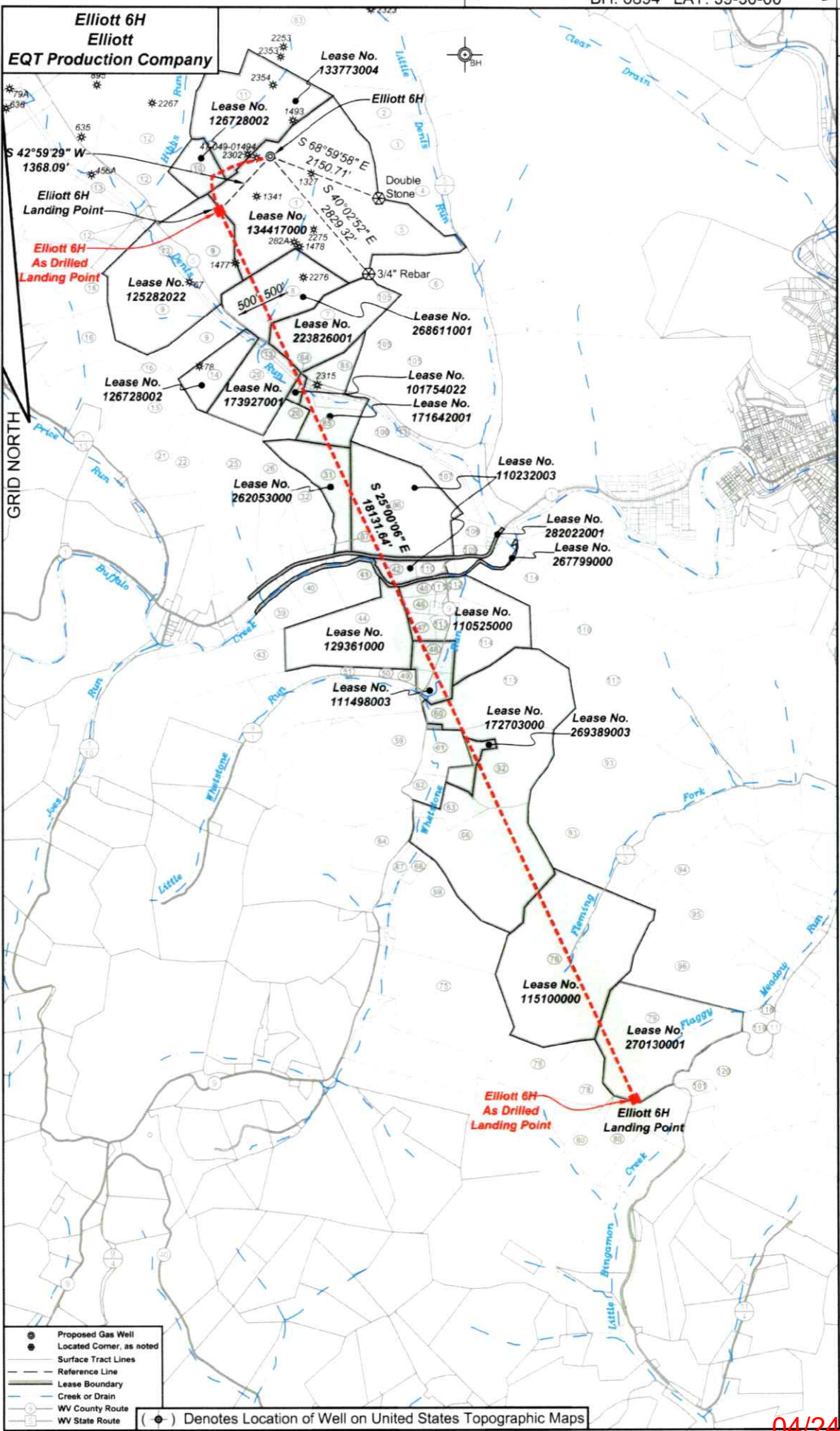
APR 15 2026

WV Department of
Environmental Protection

04/24/2026

BH: 6894' LAT: 39-30-00

BH: 864' LONG: 80-20-00



RECEIVED
Office of Oil and Gas

JAN 15 2026

WV Department of
Environmental Protection

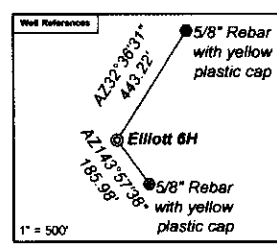
04/24/2026

**Elliott 6H
Elliott
EQT Production Company**

| Tract ID | Tract No | Parcel No | County | District |
|----------|----------|-----------|--------|------------|
| 1 | 37 | 1 | Marion | Mannington |
| 2 | 34 | 49 | Marion | Mannington |
| 3 | 34 | 47 | Marion | Mannington |
| 4 | 33 | 1 | Marion | Mannington |
| 5 | 37 | 10.1 | Marion | Mannington |
| 6 | 34 | 49 | Marion | Mannington |
| 7 | 34 | 41 | Marion | Mannington |
| 8 | 34 | 39 | Marion | Mannington |
| 9 | 34 | 33 | Marion | Mannington |
| 10 | 34 | 38 | Marion | Mannington |
| 11 | 34 | 37 | Marion | Mannington |
| 12 | 34 | 35 | Marion | Mannington |
| 13 | 34 | 52 | Marion | Mannington |
| 14 | 34 | 32 | Marion | Mannington |
| 15 | 37 | 1 | Marion | Mannington |
| 16 | 34 | 9 | Marion | Mannington |
| 17 | 36 | 20 | Marion | Mannington |
| 20 | 34 | 31 | Marion | Mannington |
| 21 | 37 | 2 | Marion | Mannington |
| 22 | 37 | 3 | Marion | Mannington |
| 23 | 34 | 4 | Marion | Mannington |
| 26 | 34 | 14 | Marion | Mannington |
| 31 | 34 | 16 | Marion | Mannington |
| 32 | 37 | 15 | Marion | Mannington |
| 33 | 37 | 8.1 | Marion | Mannington |
| 40 | 65 | 8.7 | Marion | Mannington |
| 41 | 65 | 8 | Marion | Mannington |
| 42 | 34 | 17 | Marion | Mannington |
| 43 | 65 | 29 | Marion | Mannington |
| 49 | 65 | 1 | Marion | Mannington |
| 45 | 65 | 6.7 | Marion | Mannington |
| 46 | 65 | 6 | Marion | Mannington |
| 47 | 65 | 2 | Marion | Mannington |
| 48 | 65 | 9.9 | Marion | Mannington |
| 49 | 65 | 18.1 | Marion | Mannington |
| 50 | 65 | 48 | Marion | Mannington |
| 51 | 65 | 47 | Marion | Mannington |
| 59 | 67 | 7 | Marion | Mannington |
| 60 | 67 | 5.1 | Marion | Mannington |
| 61 | 67 | 6 | Marion | Mannington |
| 62 | 67 | 34.1 | Marion | Mannington |
| 63 | 67 | 8 | Marion | Mannington |
| 64 | 65 | 50 | Marion | Mannington |
| 66 | 67 | 9 | Marion | Mannington |
| 67 | 67 | 10.3 | Marion | Mannington |
| 68 | 67 | 10.11 | Marion | Mannington |
| 69 | 67 | 10.1 | Marion | Mannington |
| 75 | 67 | 11 | Marion | Mannington |
| 76 | 68 | 1 | Marion | Mannington |
| 78 | 66 | 11.1 | Marion | Mannington |
| 79 | 68 | 7 | Marion | Mannington |
| 80 | 66 | 12 | Marion | Mannington |
| 83 | 34 | 37 | Marion | Mannington |
| 84 | 34 | 30 | Marion | Mannington |
| 85 | 34 | 40 | Marion | Mannington |
| 86 | 34 | 17 | Marion | Mannington |
| 87 | 34 | 15.2 | Marion | Mannington |
| 92 | 67 | 3 | Marion | Mannington |
| 95 | 68 | 3 | Marion | Mannington |
| 94 | 68 | 9 | Marion | Mannington |
| 95 | 68 | 8 | Marion | Mannington |
| 96 | 68 | 7.10 | Marion | Mannington |
| 101 | 66 | 23 | Marion | Mannington |
| 106 | 34 | 43 | Marion | Mannington |
| 107 | 34 | 44 | Marion | Mannington |
| 107 | 34 | 50 | Marion | Mannington |
| 108 | 34 | 18 | Marion | Mannington |
| 109 | 34 | 10 | Marion | Mannington |
| 110 | 34 | 17.2 | Marion | Mannington |
| 111 | 65 | 6.3 | Marion | Mannington |
| 112 | 65 | 5 | Marion | Mannington |
| 113 | 65 | 3 | Marion | Mannington |
| 114 | 67 | 3 | Marion | Mannington |
| 115 | 67 | 4 | Marion | Mannington |
| 116 | 67 | 1 | Marion | Mannington |
| 117 | 68 | 2 | Marion | Mannington |
| 118 | 68 | 7 | Marion | Mannington |
| 120 | 68 | 6 | Marion | Mannington |
| 120 | 69 | 59 | Marion | Mannington |

| Surface Tract Owner | Acres |
|---|---------|
| Marion County Coal Resources Inc | 155.25 |
| Thomas R. & James J. Haught | 74.78 |
| Edward S. Potts | 73 |
| Thomas D. & Anne M. Haught | 106.823 |
| Betty J. Haught | 69.75 |
| City of Mannington | 71.5 |
| Marion County Coal Resources Inc | 47 |
| Marion County Coal Resources Inc | 47.75 |
| Marion County Coal Resources Inc | 138 |
| Marion County Coal Resources Inc | 17 |
| Marion County Coal Resources Inc | 133.37 |
| Marion County Coal Resources Inc | 129 |
| CSA Transmission | 12.62 |
| Marion County Coal Resources Inc | 22.25 |
| Carol J. Murphy | 52 |
| Hamson County Coal Resources Inc | 125.75 |
| Marion County Coal Resources Inc | 131.1 |
| Consolidation Coal Company | NA |
| Mike Ross Inc | 18 |
| Mike Ross Inc | 19 |
| Richard N. & Loretta A. Melone | 73.66 |
| Benny R. Thomas Jr | 74.80 |
| Michael R. & Lou Ann Harms | 15.5279 |
| James E. & Emma J. Riggs | 21.185 |
| Consolidation Coal Company | 10.86 |
| Jose E. Potts Jr | 14.98 |
| Jose E. Potts Jr | 13.98 |
| Vicki L. Gussner et al | 86.59 |
| Dianne R. Lutz | 91.51 |
| Ricky L. Rinehart | 66.25 |
| Michelle A. & Sam W. Harms | 4.67 |
| Kenneth A. Thomas | 4.62 |
| Ricky L. Rinehart | 5 |
| Nelson W. & Carmen G. Hays | 19.25 |
| Nelson W. & Carmen G. Hays | 2 |
| Thomas S. Waters | 1.8024 |
| Joseph S. Rinehart | 7.75 |
| Howard R. & Eldora C. Masters | 23.33 |
| State Soil Conservation Commission | 6.87 |
| State Soil Conservation Commission | 18.5 |
| State Soil Conservation Commission | 4 |
| State Soil Conservation Commission | 11.5 |
| Celaine Haught | 41.99 |
| State Soil Conservation Commission | 27.8 |
| State Soil Conservation Commission | 2.25 |
| Lloyd L. & Sunday R. Bunker | 3.109 |
| Lloyd L. & Sunday R. Bunker | 46.19 |
| Lloyd L. & Sunday R. Bunker | 71.2 |
| Robert L. & Florence J. Masters | 1.59 |
| Michael L. & Belle J. Shearer | 47.68 |
| DTM Appalachia Gathering LLC | 84.26 |
| Michael L. & Belle J. Shearer | 47.17 |
| Consolidation Coal Company | NA |
| Consolidation Coal Company | NA |
| Consolidation Coal Company | 36.1 |
| Vicki L. Gussner et al | 86.59 |
| James C. & Emma J. Riggs | 2 |
| State Soil Conservation Commission | 57.51 |
| Udon J. Brown | 120.25 |
| Freeland W. & Crysta A. Miller | 87.704 |
| Freeland W. & Crysta A. Miller | 74.87 |
| DTM Appalachia Gathering LLC | NA |
| B. H. L. Creek | 5.31 |
| State of West Virginia Department of Commerce | 67.087 |
| Consolidation Coal Company | NA |
| CSA Transmission | 45.25 |
| Cheryl Morris | 6.75 |
| Samuel L. & Lundy M. Morris | 3.8507 |
| Vicki L. Gussner et al | 4.463 |
| Ricky L. Rinehart | 1 |
| Roger W. & Carol S. Higgins | 0.33 |
| Trustees Buffalo Methodist Church | 2.31 |
| Jack L. Higgins | 61 |
| State Soil Conservation Commission | 50 |
| Newton S. Brandy Emmons Trust | 81 |
| Robert C. & Florence J. Masters | 106.5 |
| Linda E. Jones | 3.985 |
| Arnold E. Jones | 6.75 |
| Robert J. Aldman | 43.1 |

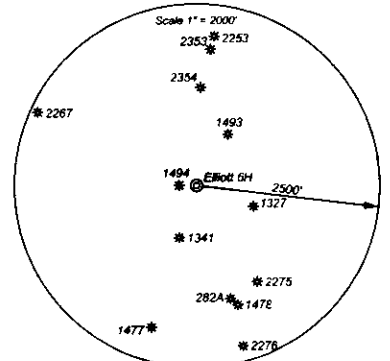
As-Drilled Well Information:
Elliott 6H coordinates are
NAD 27 N: 381,948.16 E: 1,751,215.69
NAD 83 UTM N: 4,377,484.88 E: 553,098.48
Elliott 6H Landing Point coordinates are
NAD 27 N: 380,937.82 E: 1,750,285.50
NAD 83 UTM N: 4,377,172.94 E: 552,820.20
Elliott 6H Bottom Hole coordinates are
NAD 27 N: 364,512.01 E: 1,757,943.69
NAD 83 UTM N: 4,372,207.47 E: 555,236.69
West Virginia Coordinate system of 1927 (North Zone)
based upon Differential GPS Measurements.
Plat orientation, corner and well ties are based upon
the grid north meridian.
Well location references are based upon the grid north
meridian.
UTM coordinates are NAD83, Zone 17, Meters.



- Elliott**
- Elliott 17H 47-049-02506
 - Elliott 15H 47-049-02506
 - Elliott 13H 47-049-02504
 - Elliott 11H 47-049-02503
 - Elliott 9H 47-049-02498
 - Elliott 7H 47-049-02502
 - Elliott 5H 47-049-02501
 - Elliott 3H 47-049-02500
 - Elliott 1H 47-049-02499
 - Elliott 18H 47-049-02560
 - Elliott 14H 47-049-02559
 - Elliott 12H 47-049-02558
 - Elliott 10H 47-049-02557
 - Elliott 8H 47-049-02556
 - Elliott 6H 47-049-02555
 - Elliott 4H 47-049-02554
 - Elliott 2H 47-049-02553

| Lease No. | Owner | Acres |
|-----------|--|-------------------|
| 134417000 | Randy J. Elliott, et al | 183 |
| 133730004 | CNX Gas Company LLC, et al | 80 |
| 126728002 | Country Roads Minerals, LLC, et al | 39.25 |
| 125282022 | Lee and Hall Royalties, et al | 109.25 |
| 268611001 | EQT Production Company | 47.25 |
| 223625001 | Jacob S. Ford, et al | 51.5 |
| 173827001 | CNX Gas Company LLC | 47.25 |
| 101754022 | CNX Gas Company LLC, et al | 3 |
| 171842001 | XTO Energy Inc, et al | 493.948872 |
| 262053000 | Michael R. Harms and Lou Ann Harms, et al | 36 |
| 110232003 | AMP R/LP, et al | 91.05 |
| 262022001 | West Virginia Department of Transportation, Division of Highways | 7.24 |
| 267789000 | West Virginia Department of Natural Resources | 25.2677 |
| 129361000 | Stephen G. Sinclair Jr. and Robin S. Sinclair Family Trust | 65.5 |
| 110525000 | Country Roads Minerals, LLC, et al | 73.75 |
| 111498003 | Country Roads Minerals, LLC, et al | 19.35 |
| 172703000 | EQT Production Company | 143 |
| 268389003 | Kathryn Paige Mann, et al | 9.08 |
| 172703000 | EQT Production Company | 77.75 |
| 115100000 | Black Gold Group LTD, et al | 134 |
| 270130001 | Steven Gayle Justice | 84.260 of 244.027 |

RECEIVED
Office of Oil and Gas
JAN 15 2026
WV Department of
Environmental Protection



04/24/2026

Perforation Data

| Stage No. | Perforation Date | Stage Perforated From TMD Ft. | Stage Perforated To TMD Ft. | # of Perforations/Stage | Formation(s) |
|-----------|------------------|-------------------------------|-----------------------------|-------------------------|--------------|
| 2 | 09/11/2025 | 26389 | 26209 | 40 | Marcellus |
| 3 | 09/11/2025 | 26189 | 26009 | 40 | Marcellus |
| 4 | 09/11/2025 | 25989 | 25809 | 40 | Marcellus |
| 5 | 09/11/2025 | 25789 | 25609 | 40 | Marcellus |
| 6 | 09/12/2025 | 25589 | 25409 | 40 | Marcellus |
| 7 | 09/12/2025 | 25389 | 25209 | 40 | Marcellus |
| 8 | 09/12/2025 | 25189 | 25009 | 40 | Marcellus |
| 9 | 09/12/2025 | 24989 | 24809 | 40 | Marcellus |
| 10 | 09/13/2025 | 24789 | 24609 | 40 | Marcellus |
| 11 | 09/13/2025 | 24589 | 24409 | 40 | Marcellus |
| 12 | 09/13/2025 | 24389 | 24209 | 40 | Marcellus |
| 13 | 09/13/2025 | 24189 | 24009 | 40 | Marcellus |
| 14 | 09/14/2025 | 23989 | 23809 | 40 | Marcellus |
| 15 | 09/14/2025 | 23789 | 23609 | 40 | Marcellus |
| 16 | 09/14/2025 | 23589 | 23409 | 40 | Marcellus |
| 17 | 09/15/2025 | 23389 | 23209 | 40 | Marcellus |
| 18 | 09/15/2025 | 23189 | 23009 | 40 | Marcellus |
| 19 | 09/15/2025 | 22989 | 22809 | 40 | Marcellus |
| 20 | 09/15/2025 | 22789 | 22609 | 40 | Marcellus |
| 21 | 09/16/2025 | 22589 | 22409 | 40 | Marcellus |
| 22 | 09/16/2025 | 22389 | 22209 | 40 | Marcellus |
| 23 | 09/16/2025 | 22189 | 22009 | 40 | Marcellus |
| 24 | 09/16/2025 | 21989 | 21809 | 40 | Marcellus |
| 25 | 09/17/2025 | 21789 | 21609 | 40 | Marcellus |
| 26 | 09/17/2025 | 21589 | 21409 | 40 | Marcellus |
| 27 | 09/17/2025 | 21389 | 21209 | 40 | Marcellus |
| 28 | 09/17/2025 | 21189 | 21009 | 40 | Marcellus |
| 29 | 09/18/2025 | 20989 | 20809 | 40 | Marcellus |
| 30 | 09/18/2025 | 20789 | 20609 | 40 | Marcellus |
| 31 | 09/18/2025 | 20589 | 20409 | 40 | Marcellus |
| 32 | 09/18/2025 | 20389 | 20209 | 40 | Marcellus |
| 33 | 09/19/2025 | 20189 | 20009 | 40 | Marcellus |
| 34 | 09/19/2025 | 19989 | 19809 | 40 | Marcellus |
| 35 | 09/19/2025 | 19789 | 19609 | 40 | Marcellus |
| 36 | 09/19/2025 | 19589 | 19409 | 40 | Marcellus |
| 37 | 09/20/2025 | 19389 | 19209 | 40 | Marcellus |
| 38 | 09/20/2025 | 19189 | 19009 | 40 | Marcellus |
| 39 | 09/20/2025 | 18989 | 18809 | 40 | Marcellus |
| 40 | 09/20/2025 | 18789 | 18609 | 40 | Marcellus |
| 41 | 09/21/2025 | 18589 | 18409 | 40 | Marcellus |
| 42 | 09/21/2025 | 18389 | 18209 | 40 | Marcellus |
| 43 | 09/21/2025 | 18189 | 18009 | 40 | Marcellus |
| 44 | 09/21/2025 | 17989 | 17809 | 40 | Marcellus |

04/24/2026

| | | | | | |
|----|------------|-------|-------|----|-----------|
| 45 | 09/21/2025 | 17789 | 17609 | 40 | Marcellus |
| 46 | 09/22/2025 | 17589 | 17409 | 40 | Marcellus |
| 47 | 09/22/2025 | 17389 | 17209 | 40 | Marcellus |
| 48 | 09/22/2025 | 17189 | 17009 | 40 | Marcellus |
| 49 | 09/22/2025 | 16989 | 16809 | 40 | Marcellus |
| 50 | 09/23/2025 | 16789 | 16609 | 40 | Marcellus |
| 51 | 09/23/2025 | 16589 | 16409 | 40 | Marcellus |
| 52 | 09/23/2025 | 16389 | 16209 | 40 | Marcellus |
| 53 | 09/23/2025 | 16189 | 16009 | 40 | Marcellus |
| 54 | 09/24/2025 | 15989 | 15809 | 40 | Marcellus |
| 55 | 09/24/2025 | 15789 | 15609 | 40 | Marcellus |
| 56 | 09/24/2025 | 15589 | 15409 | 40 | Marcellus |
| 57 | 09/24/2025 | 15389 | 15209 | 40 | Marcellus |
| 58 | 09/25/2025 | 15189 | 15009 | 40 | Marcellus |
| 59 | 09/25/2025 | 14989 | 14809 | 40 | Marcellus |
| 60 | 09/25/2025 | 14789 | 14609 | 40 | Marcellus |
| 61 | 09/25/2025 | 14589 | 14409 | 40 | Marcellus |
| 62 | 09/26/2025 | 14389 | 14209 | 40 | Marcellus |
| 63 | 09/26/2025 | 14189 | 14009 | 40 | Marcellus |
| 64 | 09/26/2025 | 13989 | 13809 | 40 | Marcellus |
| 65 | 09/26/2025 | 13789 | 13609 | 40 | Marcellus |
| 66 | 09/26/2025 | 13589 | 13409 | 40 | Marcellus |
| 67 | 09/27/2025 | 13389 | 13209 | 40 | Marcellus |
| 68 | 09/27/2025 | 13189 | 13009 | 40 | Marcellus |
| 69 | 09/27/2025 | 12989 | 12809 | 40 | Marcellus |
| 70 | 09/27/2025 | 12789 | 12609 | 40 | Marcellus |
| 71 | 09/28/2025 | 12589 | 12409 | 40 | Marcellus |
| 72 | 09/28/2025 | 12389 | 12209 | 40 | Marcellus |
| 73 | 09/28/2025 | 12195 | 12009 | 40 | Marcellus |
| 74 | 09/29/2025 | 11989 | 11809 | 40 | Marcellus |
| 75 | 09/29/2025 | 11789 | 11609 | 40 | Marcellus |
| 76 | 09/29/2025 | 11589 | 11409 | 40 | Marcellus |
| 77 | 09/29/2025 | 11389 | 11209 | 40 | Marcellus |
| 78 | 09/30/2025 | 11189 | 11009 | 40 | Marcellus |
| 79 | 09/30/2025 | 10989 | 10809 | 40 | Marcellus |
| 80 | 09/30/2025 | 10789 | 10609 | 40 | Marcellus |
| 81 | 09/30/2025 | 10589 | 10409 | 40 | Marcellus |
| 82 | 09/30/2025 | 10389 | 10209 | 40 | Marcellus |
| 83 | 10/01/2025 | 10189 | 10009 | 40 | Marcellus |
| 84 | 10/01/2025 | 9989 | 9809 | 40 | Marcellus |
| 85 | 10/01/2025 | 9789 | 9609 | 40 | Marcellus |
| 86 | 10/01/2025 | 9589 | 9409 | 40 | Marcellus |
| 87 | 10/02/2025 | 9389 | 9209 | 40 | Marcellus |
| 88 | 10/02/2025 | 9189 | 9009 | 40 | Marcellus |
| 89 | 10/02/2025 | 8989 | 8809 | 40 | Marcellus |
| 90 | 10/02/2025 | 8789 | 8609 | 40 | Marcellus |
| 91 | 10/02/2025 | 8589 | 8409 | 40 | Marcellus |

04/24/2026

92

10/03/2025

8389

8249

32

Marcellus

04/24/2026

Stimulation Data

| Stage # | Stimulation Date | Ave Pump Rate (BPM) | Ave Treatment Pressure (PSI) | Max Breakdown Pressure (PSI) | ISIP (PSI) | Amount of Proppant (lbs) | Amount of Water (bbls) | Amount of Nitrogen/other (units) |
|---------|------------------|---------------------|------------------------------|------------------------------|------------|--------------------------|------------------------|----------------------------------|
| 1 | 09/10/2025 | 88 | 10819 | 8058 | 4049 | 175990 | 4227 | |
| 2 | 09/11/2025 | 94 | 10957 | 7230 | 5168 | 439942 | 10506 | |
| 3 | 09/11/2025 | 95 | 10953 | 7633 | 5513 | 439939 | 10253 | |
| 4 | 09/11/2025 | 96 | 10887 | 7127 | 5473 | 440011 | 10393 | |
| 5 | 09/12/2025 | 97 | 10900 | 6992 | 6422 | 440050 | 10424 | |
| 6 | 09/12/2025 | 98 | 10938 | 6787 | 4994 | 440098 | 10346 | |
| 7 | 09/12/2025 | 92 | 10917 | 7454 | 4389 | 440005 | 10204 | |
| 8 | 09/12/2025 | 98 | 10724 | 6140 | 3878 | 440137 | 10192 | |
| 9 | 09/12/2025 | 99 | 9874 | 5204 | 4691 | 440041 | 10223 | |
| 10 | 09/13/2025 | 99 | 9972 | 4755 | 4903 | 439957 | 10238 | |
| 11 | 09/13/2025 | 98 | 10024 | 5851 | 5344 | 439977 | 10155 | |
| 12 | 09/13/2025 | 97 | 10929 | 6573 | 5440 | 440681 | 10350 | |
| 13 | 09/14/2025 | 98 | 10884 | 6620 | 5339 | 440057 | 10182 | |
| 14 | 09/14/2025 | 99 | 10602 | 5010 | 5134 | 440073 | 10455 | |
| 15 | 09/14/2025 | 99 | 10861 | 4943 | 5841 | 440042 | 10290 | |
| 16 | 09/15/2025 | 90 | 10845 | 6679 | 5641 | 440220 | 11301 | |
| 17 | 09/15/2025 | 99 | 10960 | 6115 | 5541 | 440064 | 10253 | |
| 18 | 09/15/2025 | 99 | 10929 | 6407 | 7320 | 440109 | 10198 | |
| 19 | 09/15/2025 | 99 | 10891 | 6317 | 5561 | 440255 | 10231 | |
| 20 | 09/15/2025 | 98 | 9955 | 5450 | 5443 | 440011 | 10237 | |
| 21 | 09/16/2025 | 99 | 9919 | 5980 | 5424 | 440069 | 10184 | |
| 22 | 09/16/2025 | 98 | 10010 | 4255 | 5363 | 440066 | 10208 | |
| 23 | 09/16/2025 | 99 | 10845 | 6248 | 4569 | 440022 | 10278 | |
| 24 | 09/17/2025 | 100 | 10804 | 5981 | 5387 | 440043 | 10220 | |
| 25 | 09/17/2025 | 99 | 10660 | 6722 | 5732 | 440043 | 10174 | |
| 26 | 09/17/2025 | 100 | 10834 | 6597 | 5413 | 440041 | 10253 | |
| 27 | 09/17/2025 | 99 | 10783 | 6106 | 5756 | 440096 | 10236 | |
| 28 | 09/18/2025 | 100 | 9910 | 5682 | 6804 | 440063 | 10261 | |
| 29 | 09/18/2025 | 100 | 9825 | 5185 | 5397 | 440220 | 10162 | |
| 30 | 09/18/2025 | 100 | 9897 | 4623 | 5700 | 440028 | 10355 | |
| 31 | 09/18/2025 | 100 | 10598 | 6120 | 5276 | 439937 | 9990 | |
| 32 | 09/19/2025 | 100 | 10530 | 6378 | 6242 | 440073 | 10119 | |
| 33 | 09/19/2025 | 100 | 9954 | 5256 | 5491 | 440135 | 10055 | |
| 34 | 09/19/2025 | 99 | 10010 | 6630 | 5174 | 439974 | 10021 | |
| 35 | 09/19/2025 | 100 | 9755 | 4934 | 5901 | 440026 | 10038 | |
| 36 | 09/20/2025 | 100 | 9745 | 4709 | 5730 | 440029 | 10165 | |
| 37 | 09/20/2025 | 98 | 9980 | 6590 | 5539 | 439995 | 10151 | |
| 38 | 09/20/2025 | 100 | 9969 | 6285 | 5777 | 440042 | 10001 | |
| 39 | 09/20/2025 | 100 | 9636 | 5912 | 5185 | 439994 | 9955 | |
| 40 | 09/21/2025 | 100 | 9855 | 5846 | 7476 | 439984 | 10015 | |
| 41 | 09/21/2025 | 99 | 9977 | 6145 | 5689 | 440016 | 10023 | |
| 42 | 09/21/2025 | 100 | 9891 | 6185 | 5559 | 439955 | 9985 | |
| 43 | 09/21/2025 | 100 | 9843 | 5908 | 6075 | 439973 | 10050 | |

04/24/2026

| | | | | | | | |
|----|------------|-----|------|------|------|--------|-------|
| 44 | 09/21/2025 | 100 | 9848 | 5952 | 5538 | 440056 | 10013 |
| 45 | 09/22/2025 | 100 | 9517 | 5162 | 8072 | 440079 | 9962 |
| 46 | 09/22/2025 | 100 | 9843 | 6394 | 5033 | 440168 | 9955 |
| 47 | 09/22/2025 | 100 | 9729 | 5861 | 5966 | 439951 | 9954 |
| 48 | 09/22/2025 | 100 | 9735 | 5341 | 5820 | 440007 | 9969 |
| 49 | 09/23/2025 | 100 | 9919 | 6069 | 4964 | 440030 | 9943 |
| 50 | 09/23/2025 | 99 | 9489 | 4926 | 4645 | 440081 | 11841 |
| 51 | 09/23/2025 | 100 | 9960 | 6119 | 5525 | 439950 | 9941 |
| 52 | 09/23/2025 | 100 | 9787 | 6496 | 5810 | 439988 | 9910 |
| 53 | 09/24/2025 | 100 | 9232 | 4944 | 5165 | 439979 | 9905 |
| 54 | 09/24/2025 | 100 | 9522 | 6372 | 5181 | 439950 | 9910 |
| 55 | 09/24/2025 | 100 | 9634 | 6285 | 5678 | 440061 | 9817 |
| 56 | 09/24/2025 | 100 | 9721 | 6577 | 5492 | 440023 | 9906 |
| 57 | 09/25/2025 | 100 | 9748 | 6270 | 5317 | 439958 | 9876 |
| 58 | 09/25/2025 | 100 | 9731 | 6453 | 6726 | 440067 | 9870 |
| 59 | 09/25/2025 | 100 | 9557 | 5648 | 5181 | 440037 | 9889 |
| 60 | 09/25/2025 | 100 | 9264 | 5824 | 5791 | 440086 | 9984 |
| 61 | 09/25/2025 | 100 | 9044 | 4915 | 6142 | 439951 | 9853 |
| 62 | 09/26/2025 | 100 | 9369 | 5980 | 6549 | 440111 | 9839 |
| 63 | 09/26/2025 | 100 | 9484 | 5202 | 8410 | 440045 | 9906 |
| 64 | 09/26/2025 | 100 | 9625 | 5366 | 5933 | 439985 | 9884 |
| 65 | 09/26/2025 | 100 | 9494 | 6110 | 5791 | 440053 | 9888 |
| 66 | 09/27/2025 | 100 | 8997 | 5126 | 6144 | 440065 | 9840 |
| 67 | 09/27/2025 | 100 | 9006 | 5163 | 5992 | 439960 | 9795 |
| 68 | 09/27/2025 | 100 | 9423 | 5946 | 6994 | 440040 | 9868 |
| 69 | 09/27/2025 | 100 | 9419 | 5978 | 6561 | 440150 | 9906 |
| 70 | 09/28/2025 | 100 | 9433 | 6229 | 7681 | 440084 | 9836 |
| 71 | 09/28/2025 | 100 | 9292 | 5891 | 6592 | 440057 | 9829 |
| 72 | 09/28/2025 | 100 | 9550 | 6305 | 8231 | 440036 | 9854 |
| 73 | 09/29/2025 | 100 | 9441 | 6180 | 6052 | 440088 | 10951 |
| 74 | 09/29/2025 | 100 | 9491 | 6161 | 6598 | 439922 | 9739 |
| 75 | 09/29/2025 | 100 | 9065 | 5630 | 6295 | 440029 | 9812 |
| 76 | 09/29/2025 | 100 | 8991 | 5680 | 5514 | 440099 | 9811 |
| 77 | 09/30/2025 | 100 | 9177 | 6001 | 5631 | 440052 | 9735 |
| 78 | 09/30/2025 | 100 | 9366 | 6663 | 6257 | 440254 | 9740 |
| 79 | 09/30/2025 | 100 | 8957 | 5327 | 6204 | 440028 | 9779 |
| 80 | 09/30/2025 | 99 | 8510 | 4843 | 5279 | 439966 | 9771 |
| 81 | 09/30/2025 | 100 | 8712 | 6028 | 5607 | 440049 | 9757 |
| 82 | 10/01/2025 | 100 | 9224 | 6100 | 5159 | 440032 | 9715 |
| 83 | 10/01/2025 | 100 | 8807 | 5740 | 8261 | 439968 | 9704 |
| 84 | 10/01/2025 | 100 | 8968 | 6459 | 8615 | 440076 | 9723 |
| 85 | 10/01/2025 | 100 | 8950 | 6361 | 5835 | 440039 | 9731 |
| 86 | 10/02/2025 | 100 | 8370 | 5340 | 5461 | 440028 | 9726 |
| 87 | 10/02/2025 | 100 | 8261 | 4665 | 8234 | 439936 | 9603 |
| 88 | 10/02/2025 | 100 | 8152 | 5820 | 8380 | 440010 | 9742 |
| 89 | 10/02/2025 | 100 | 8401 | 5934 | 5269 | 440200 | 9735 |
| 90 | 10/02/2025 | 100 | 8719 | 6563 | 5449 | 440050 | 9695 |

04/24/2026

| | | | | | | | |
|----|------------|-----|------|------|------|--------|------|
| 91 | 10/03/2025 | 100 | 8172 | 5913 | 5640 | 439999 | 9711 |
| 92 | 10/03/2025 | 100 | 9050 | 6874 | 5282 | 352196 | 7655 |

04/24/2026

Hydraulic Fracturing Fluid Product Component Information Disclosure

| | |
|---------------------------------|--------------------|
| Job Start Date: | 07/30/2025 |
| Job End Date: | 10/03/2025 |
| State: | West Virginia |
| County: | Marion |
| API Number: | 47-049-02555-00-00 |
| Operator Name: | EQT Production |
| Well Name and Number: | Elliott 6H |
| Latitude: | 39.545396 |
| Longitude: | -80.382025 |
| Datum: | NAD83 |
| Federal Well: | NO |
| Indian Well: | NO |
| True Vertical Depth: | 7835 |
| Total Base Water Volume (gal)*: | 38486069.84 |
| Total Base Non Water Volume: | 0 |



| Water Source | Percent |
|--------------|---------|
|--------------|---------|

RECEIVED
Office of Oil and Gas
JAN 15 2026
WV Department of
Environmental Protection

Hydraulic Fracturing Fluid Composition:

| Trade Name | Supplier | Purpose | Ingredients | Chemical Abstract Service Number (CAS #) | Maximum Ingredient Concentration in Additive (% by mass)** | Maximum Ingredient Concentration in HF Fluid (% by mass)** | Comments |
|--------------------|------------------|--------------------|---|--|--|--|----------|
| Water | EQT | Carrier/Base Fluid | | | | | |
| | | | Water | 7732-18-5 | 100.00000 | 75.04596 | None |
| Sand (Proppant) | EQT | Proppant | | | | | |
| | | | Silica Substrate | 14808-60-7 | 100.00000 | 24.85076 | None |
| StimSTREAM FR 9800 | ChemStream, Inc. | Friction Reducer | | | | | |
| | | | ACRYLAMIDE-CHLORIDE SALT OF TRIMETHYLAMMONIO-ETHYL ACRYLATE COPOLYMER | 69418-26-4 | 40.00000 | 0.00921 | None |
| StimSTREAM FR 9800 | ChemStream, Inc. | Friction Reducer | | | | | |
| | | | ALKANES, C12-26-BRANCHED AND LINEAR | 90622-53-0 | 40.00000 | 0.00921 | None |
| Clearal 268 | ChemStream, Inc. | Biocide | | | | | |

04/24/2026

| | | | | | | | |
|------------------------|-------------------------|------------------|------------------------------------|-------------|----------|---------|------|
| | | | Water | 7732-18-5 | 80.00000 | 0.00661 | None |
| StimSTREAM FR 9800 | ChemStream, Inc. | Friction Reducer | | | | | |
| | | | Water | 7732-18-5 | 15.00000 | 0.00129 | None |
| Enviro-Syn HCR-7000-WL | Fluid Energy Group Ltd. | Acid | | | | | |
| | | | FLUID-Acid-00001 | Proprietary | 20.00000 | 0.00114 | None |
| Clearal 268 | ChemStream, Inc. | Biocide | | | | | |
| | | | Glutaraldehyde | 111-30-8 | 20.00000 | 0.00041 | None |
| Enviro-Syn HCR-7000-WL | Fluid Energy Group Ltd. | Acid | | | | | |
| | | | FLUID-Amine-00001 | Proprietary | 10.00000 | 0.00028 | None |
| StimSTREAM FR 9800 | ChemStream, Inc. | Friction Reducer | | | | | |
| | | | ETHOXYLATED ALCOHOLS (C12-16) | 68551-12-2 | 5.00000 | 0.00014 | None |
| StimSTREAM SC-398 | ChemStream, Inc. | Scale Inhibitor | | | | | |
| | | | AA/ATBS Co-polymer | 9003-05-8 | 5.00000 | 0.00002 | None |
| Clearal 268 | ChemStream, Inc. | Biocide | | | | | |
| | | | Didecyl dimethyl ammonium chloride | 7173-51-5 | 3.00000 | 0.00001 | None |
| Clearal 268 | ChemStream, Inc. | Biocide | | | | | |
| | | | Quaternary Ammonium Compounds | 68424-85-1 | 3.00000 | 0.00001 | None |
| Clearal 268 | ChemStream, Inc. | Biocide | | | | | |
| | | | Ethanol | 64-17-5 | 1.50000 | 0.00000 | None |
| StimSTREAM SC-398 | ChemStream, Inc. | Scale Inhibitor | | | | | |
| | | | AA/Maleic Anhydride Co-polymer | 9003-04-7 | 1.00000 | 0.00000 | None |

Ingredients shown above are subject to 29 CFR 1910.1200(i) and appear on Material Safety Data Sheets (MSDS). Ingredients shown below are Non-MSDS

* Total Water Volume sources may include various types of water including fresh water, produced water, and recycled water

** Information is based on the maximum potential for concentration and thus the total may be over 100%

Note: For Field Development Products (products that begin with FDP), MSDS level only information has been provided.

Ingredient information for chemicals subject to 29 CFR 1910.1200(i) and Appendix D are obtained from suppliers Material Safety Data Sheets (MSDS)

04/24/2026

Well Operator's Report of Well Work



Well Number: Elliott 6H (L003933)

API: 47 - 049 - 02555

Submission: Initial Amended

Notes:

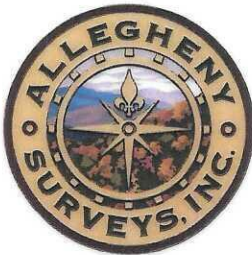
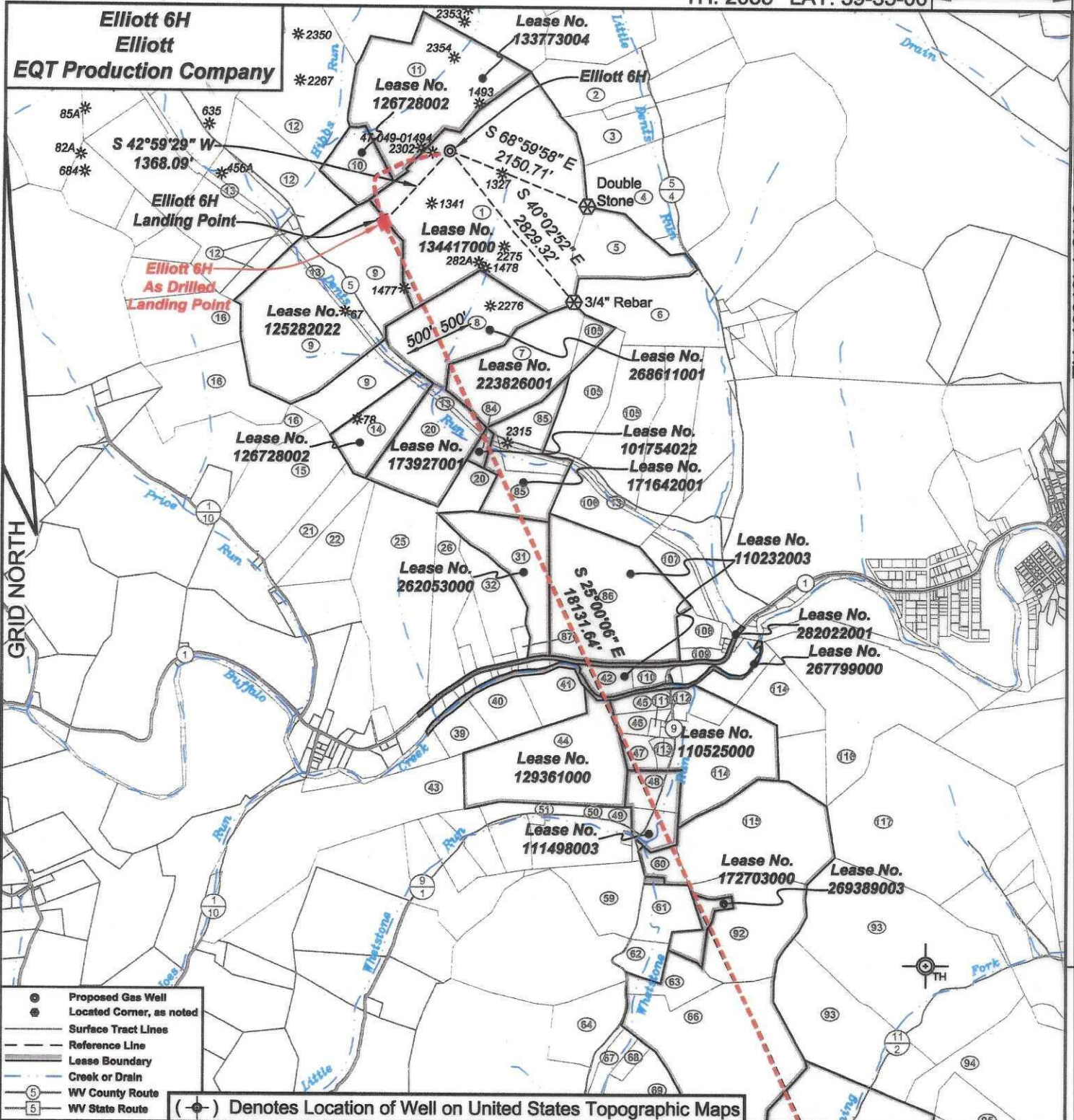
APPROVED APR 14 2026
[Handwritten signature]

RECEIVED
Office of Oil and Gas

APR 15 2026

WV Department of
Environmental Protection

04/24/2026



I, the undersigned, hereby certify that this plat is correct to the best of my knowledge and belief and shows all the information required by law and the regulations issued and prescribed by the Department of Environmental Protection.

Ben R. Singleton
P.S. 2092



SEAL

FILE NO: 142-22
DRAWING NO: Elliott 6H
SCALE: 1" = 2000'
MINIMUM DEGREE OF ACCURACY: 1:2500
PROVEN SOURCE OF ELEVATION: NGS CORS Station

STATE OF WEST VIRGINIA
DEPARTMENT OF ENVIRONMENTAL PROTECTION
OIL AND GAS DIVISION

DATE: June 06 20 25
OPERATOR'S WELL NO.: Elliott 6H
API WELL NO
47 - 049 - 02555
STATE COUNTY PERMIT

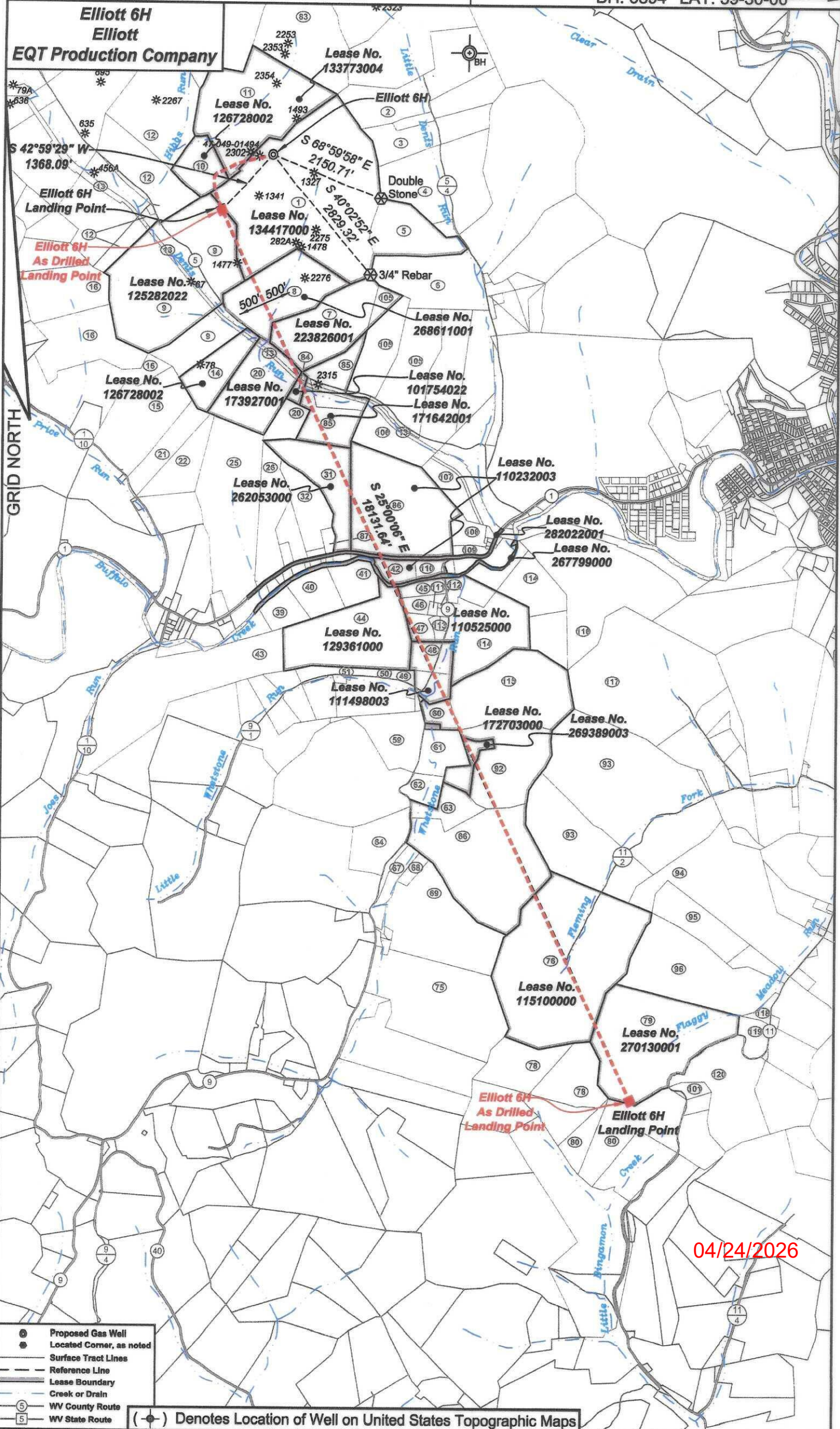
WELL TYPE: OIL GAS LIQUID INJECTION WASTE DISPOSAL
(IF GAS) PRODUCTION: STORAGE DEEP SHALLOW
LOCATION: ELEVATION: 1342' WATERSHED Tributary of Dents Run QUADRANGLE: Glover Gap
DISTRICT: Mannington COUNTY: Marion 04/24/2026
SURFACE OWNER: Marion County Coal Resources Inc. ACREAGE: 153.25
ROYALTY OWNER: Randy J. Elliott, et al. LEASE NO: 134417000 ACREAGE: 183
PROPOSED WORK: DRILL CONVERT DRILL DEEPER FRACTURE OR STIMULATE PLUG OFF OLD FORMATION
 PERFORATE NEW FORMATION OTHER PHYSICAL CHANGE IN WELL (SPECIFY)
 PLUG AND ABANDON CLEAN OUT AND REPLUG TARGET FORMATION: Marcellus ESTIMATED DEPTH: 7,796'

WELL OPERATOR: EQT Production Company DESIGNATED AGENT: Joseph C. Mallow
ADDRESS: 400 Woodcliff Drive ADDRESS: 427 Midstate Drive
Canonsburg, PA 15317 Clarksburg, WV 25301

BH: 6894' LAT: 39-30-00

BH: 864' LONG: 80-20-00

**Elliott 6H
Elliott
EQT Production Company**



S 42°59'29" W
1368.09'

S 68°59'58" E
2150.71'

S 40°02'52" E
2829.32'

S 25°00'00" E
1813.04'

04/24/2026

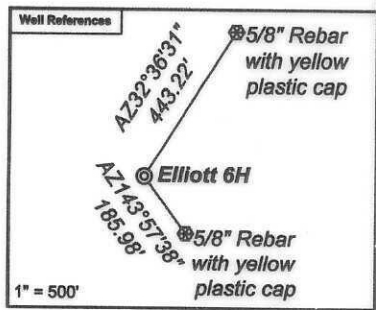
- ⊙ Proposed Gas Well
- ⊙ Located Corner, as noted
- Surface Tract Lines
- - - Reference Line
- ▬ Lease Boundary
- Creek or Drain
- ⑨ WV County Route
- ⑤ WV State Route

(⊙) Denotes Location of Well on United States Topographic Maps

Elliott 6H
Elliott
EQT Production Company

| Tract I.D. | Tax Map No. | Parcel No. | County | District | Surface Tract Owner | Acres |
|------------|-------------|------------|--------|------------|---|---------|
| 1 | 34 | 40 | Marion | Mannington | Marion County Coal Resources Inc. | 153.25 |
| 2 | 34 | 49 | Marion | Mannington | Thomas D. & Aimee J. Haught | 24.78 |
| 3 | 34 | 47 | Marion | Mannington | Edward F. Price | 73 |
| 4 | 34 | 1 | Marion | Mannington | Thomas D. & Aimee J. Haught | 106.823 |
| 5 | 34 | 40.1 | Marion | Mannington | Betty J. Fluharty | 29.75 |
| 6 | 34 | 45 | Marion | Mannington | City of Mannington | 42.5 |
| 7 | 34 | 41 | Marion | Mannington | Marion County Coal Resources Inc. | 47 |
| 8 | 34 | 39 | Marion | Mannington | Marion County Coal Resources Inc. | 47.75 |
| 9 | 34 | 33 | Marion | Mannington | Marion County Coal Resources Inc. | 134 |
| 10 | 34 | 38 | Marion | Mannington | Marion County Coal Resources Inc. | 1/ |
| 11 | 34 | 3/ | Marion | Mannington | Marion County Coal Resources Inc. | 133.3/ |
| 12 | 34 | 36 | Marion | Mannington | Marion County Coal Resources Inc. | 120 |
| 13 | 34 | 52 | Marion | Mannington | CSX Transportation | 12.62 |
| 14 | 34 | 32 | Marion | Mannington | Marion County Coal Resources Inc. | 22.25 |
| 15 | 34 | 1 | Marion | Mannington | Carol J. Murphy | 52 |
| 16 | 35 | 0 | Marion | Mannington | Harrison County Coal Resources Inc. | 125.75 |
| 17 | 36 | 20 | Marion | Mannington | Marion County Coal Resources Inc. | 131.1 |
| 20 | 34 | 31 | Marion | Mannington | Consolidation Coal Company | NA |
| 21 | 34 | 2 | Marion | Mannington | Mike Ross Inc. | 18 |
| 22 | 34 | 3 | Marion | Mannington | Mike Ross Inc. | 19 |
| 25 | 34 | 4 | Marion | Mannington | Richard N. & Doretta A. Malone | 71.66 |
| 26 | 34 | 14 | Marion | Mannington | Perry R. Thorne Jr. | 24.82 |
| 31 | 34 | 16 | Marion | Mannington | Michael R. & Lou Ann Harris | 35.5239 |
| 32 | 34 | 15 | Marion | Mannington | James E. & Emma J. Riggs | 21.185 |
| 39 | 65 | 8.1 | Marion | Mannington | Consolidation Coal Company | 10.68 |
| 40 | 65 | 8.2 | Marion | Mannington | Jose E. Pena Jr | 13.98 |
| 41 | 65 | 8 | Marion | Mannington | Jose F. Pena Jr | 13.98 |
| 42 | 34 | 17 | Marion | Mannington | Vicki L. Gripper, et al. | 86.59 |
| 43 | 65 | 19 | Marion | Mannington | Dianne R. Lutz | 91.34 |
| 44 | 65 | 1 | Marion | Mannington | Ricky L. Rinehart | 65.25 |
| 45 | 65 | 6.2 | Marion | Mannington | Michelle & Scott Williams | 4.92 |
| 46 | 65 | 6 | Marion | Mannington | Jennifer A. Barker | 4.62 |
| 47 | 65 | 2 | Marion | Mannington | Ricky L. Rinehart | 6 |
| 48 | 65 | 49 | Marion | Mannington | Nelson W. & Carmen G. Hays | 19.35 |
| 49 | 65 | 48.1 | Marion | Mannington | Nelson W. & Carmen G. Hays | 2 |
| 50 | 65 | 48 | Marion | Mannington | Thomas D. Watts | 0.8624 |
| 51 | 65 | 47 | Marion | Mannington | Joseph S. Rinehart | 7.75 |
| 59 | 67 | 7 | Marion | Mannington | Howard R. & Eldora G. Masters | 23.13 |
| 60 | 6/ | 5.1 | Marion | Mannington | State Soil Conservation Commission | 8.3/ |
| 61 | 6/ | 6 | Marion | Mannington | State Soil Conservation Commission | 18.5 |
| 62 | 65 | 34.1 | Marion | Mannington | State Soil Conservation Commission | 9 |
| 63 | 67 | 8 | Marion | Mannington | State Soil Conservation Commission | 13.6 |
| 64 | 65 | 50 | Marion | Mannington | Celaine Haught | 44.99 |
| 66 | 67 | 9 | Marion | Mannington | State Soil Conservation Commission | 94.8 |
| 67 | 67 | 10.3 | Marion | Mannington | State Soil Conservation Commission | 8.25 |
| 68 | 67 | 10.11 | Marion | Mannington | Lloyd I. & Sunday R. Barker | 3.109 |
| 69 | 67 | 10.1 | Marion | Mannington | Lloyd I. & Sunday R. Barker | 46.39 |
| 75 | 67 | 14 | Marion | Mannington | Lloyd I. & Sunday R. Barker | 71.2 |
| 76 | 68 | 4 | Marion | Mannington | Robert E. & Florence J. Masters | 139 |
| 78 | 66 | 11.1 | Marion | Mannington | Michael L. & Billie J. Shearer | 47.68 |
| 79 | 68 | 5 | Marion | Mannington | DTM Appalachia Gathering LLC | 84.76 |
| 80 | 66 | 12 | Marion | Mannington | Michael L. & Billie J. Shearer | 47.17 |
| 83 | 34 | 37 | Marion | Mannington | Consolidation Coal Company | NA |
| 84 | 34 | 30 | Marion | Mannington | Consolidation Coal Company | NA |
| 85 | 34 | 42 | Marion | Mannington | Consolidation Coal Company | 38.1 |
| 86 | 34 | 17 | Marion | Mannington | Vicki L. Gripper, et al. | 86.59 |
| 87 | 34 | 15.2 | Marion | Mannington | James E. & Emma J. Riggs | 2 |
| 92 | 67 | 5 | Marion | Mannington | State Soil Conservation Commission | 54.54 |
| 93 | 68 | 3 | Marion | Mannington | Doris J. Brown | 120.25 |
| 94 | 68 | 9 | Marion | Mannington | Freeland W. & Crystal A. Miller | 87.704 |
| 95 | 68 | 8 | Marion | Mannington | Freeland W. & Crystal A. Miller | 24.87 |
| 96 | 68 | 7.10 | Marion | Mannington | DTM Appalachia Gathering LLC | NA |
| 101 | 66 | 19 | Marion | Mannington | Billie J. Creak | 3.44 |
| 105 | 34 | 43 | Marion | Mannington | State of West Virginia Department of Commerce | 6/08/ |
| 106 | 34 | 44 | Marion | Mannington | Consolidation Coal Company | NA |
| 107 | 34 | 50 | Marion | Mannington | CSX Transportation | 45.25 |
| 108 | 34 | 18 | Marion | Mannington | Cindy Morris | 6.75 |
| 109 | 34 | 19 | Marion | Mannington | Samuel E. & Cindy M. Morris | 3.830/ |
| 110 | 34 | 17.2 | Marion | Mannington | Vicki L. Gripper, et al. | 4.463 |
| 111 | 65 | 6.3 | Marion | Mannington | Ricky L. & Holly R. Rinehart | 1 |
| 112 | 65 | 5 | Marion | Mannington | Ruger W. & Carol S. Higgins | 0.33 |
| 113 | 65 | 3 | Marion | Mannington | Trustees Buffalo Methodist Church | 2.91 |
| 114 | 6/ | 3 | Marion | Mannington | Jack L. Higgins | 64 |
| 115 | 67 | 4 | Marion | Mannington | State Soil Conservation Commission | 59 |
| 116 | 67 | 1 | Marion | Mannington | Newton S. Beaty Families Trust | 83 |
| 117 | 68 | 2 | Marion | Mannington | Robert E. & Florence J. Masters | 105.5 |
| 118 | 68 | 7 | Marion | Mannington | Lance E. Jones | 3.095 |
| 119 | 68 | 6 | Marion | Mannington | Arnold Efav | 8.75 |
| 120 | 60 | 59 | Marion | Mannington | Robert L. Wildman | 43.3 |

As-Drilled Well Information:
Elliott 6H coordinates are
NAD 27 N: 381,946.18 E: 1,751,215.69
NAD 83 UTM N: 4,377,484.88 E: 553,098.48
Elliott 6H Landing Point coordinates are
NAD 27 N: 380,937.82 E: 1,750,285.50
NAD 83 UTM N: 4,377,172.94 E: 552,820.20
Elliott 6H Bottom Hole coordinates are
NAD 27 N: 364,512.01 E: 1,757,943.69
NAD 83 UTM N: 4,372,207.47 E: 555,236.69
West Virginia Coordinate system of 1927 (North Zone) based upon Differential GPS Measurements.
Plat orientation, corner and well ties are based upon the grid north meridian.
Well location references are based upon the grid north meridian.
UTM coordinates are NAD83, Zone 17, Meters.



- Elliott**
- Elliott 17H 47-049-02506
 - Elliott 15H 47-049-02505
 - Elliott 13H 47-049-02504
 - Elliott 11H 47-049-02503
 - Elliott 9H 47-049-02498
 - Elliott 7H 47-049-02502
 - Elliott 5H 47-049-02501
 - Elliott 3H 47-049-02500
 - Elliott 1H 47-049-02499
 - Elliott 16H 47-049-02560
 - Elliott 14H 47-049-02559
 - Elliott 12H 47-049-02558
 - Elliott 10H 47-049-02557
 - Elliott 8H 47-049-02556
 - Elliott 6H 47-049-02555
 - Elliott 4H 47-049-02554
 - Elliott 2H 47-049-02553

| Lease No. | Owner | Acres |
|-----------|--|-------------------|
| 134417000 | Randy J. Elliott, et al. | 183 |
| 133773004 | CNX Gas Company LLC, et al. | 80 |
| 126728002 | Country Roads Minerals, LLC, et al. | 39.25 |
| 125282022 | Lee and Hall Royalties, et al. | 47.25 |
| 289811001 | EQT Production Company | 109.25 |
| 223826001 | Jacob G. Ford, et al. | 47.25 |
| 173927001 | CNX Gas Company LLC | 51.5 |
| 101754022 | CNX Gas Company LLC, et al. | 47.25 |
| 171642001 | XTO Energy Inc., et al. | 3 |
| 282053000 | Michael R. Harris and Lou Ann Harris, et al. | 493.948872 |
| 110232003 | AMP IV, LP, et al. | 36 |
| 282022001 | West Virginia Department of Transportation, Division of Highways | 91.05 |
| 267799000 | West Virginia Department of Natural Resources | 7.24 |
| 128361000 | Stephen G. Sinclair Jr. and Robin S. Sinclair Family Trust | 25.2677 |
| 110525000 | Country Roads Minerals, LLC, et al. | 65.5 |
| 111498003 | Country Roads Minerals, LLC, et al. | 73.75 |
| 172703000 | EQT Production Company | 19.35 |
| 269389003 | Kathryn Paige Mann, et al. | 143 |
| 172703000 | EQT Production Company | 9.08 |
| 115100000 | Black Gold Group LTD, et al. | 77.75 |
| 270130001 | Steven Gayle Justice | 134 |
| | | 84.260 of 244.027 |

