

State of West Virginia
Department of Environmental Protection - Office of Oil and Gas
Well Operator's Report of Well Work

API 47 - 049 - 02559 County Marion District Mannington
Quad Glover Gap Pad Name ELLIOTT Field/Pool Name N/A
Farm name Marion County Coal Resources Inc. Well Number Elliott 14H (L004598)
Operator (as registered with the OOG) EQT Production Company
Address 400 Woodcliff Drive City Canonsburg State PA Zip 15317

As Drilled location NAD 83/UTM Attach an as-drilled plat, profile view, and deviation survey
Top hole Northing 4,377,501.84 Easting 553,105.32
Landing Point of Curve Northing 4,377,811.46 Easting 553,999.03
Bottom Hole Northing 4,372,075.90 Easting 556,283.99

Elevation (ft) 1343' GL Type of Well New Existing Type of Report Interim Final
Permit Type Deviated Horizontal Horizontal 6A Vertical Depth Type Deep Shallow
Type of Operation Convert Deepen Drill Plug Back Redrilling Rework Stimulate
Well Type Brine Disposal CBM Gas Oil Secondary Recovery Solution Mining Storage Other _____
Type of Completion Single Multiple Fluids Produced Brine Gas NGL Oil Other _____
Drilled with Cable Rotary

Drilling Media Surface hole Air Mud Fresh Water Intermediate hole Air Mud Fresh Water Brine
Production hole Air Mud Fresh Water Brine

Mud Type(s) and Additive(s)
Synthetic Oil Based Mud 13.41 ppg barium sulfate, sodium chloride, xanthan gum, polyanionic cellulose, modified starch, sodium hydroxide, phosphonates and alkyl phosphates, glutaraldehyde solution, calcium hydroxide, partially hydrolyzed polyacrylamide/polyacrylate, potassium chloride, sodium carbonate, ground walnut shells, alcohol and modified fatty acid, ferrochrome lignosulfonate, calcium carbonate, fibrous cellulose

Date permit issued 08/05/2024 Date drilling commenced 08/13/2024 Date drilling ceased 06/15/2025
Date completion activities began 07/30/2025 Date completion activities ceased 10/20/2025
Verbal plugging (Y/N) N Date permission granted N/A Granted by N/A

Please note: Operator is required to submit a plugging application within 5 days of verbal permission to plug

Freshwater depth(s) ft 190', 275', 326' Open mine(s) (Y/N) depths N
Salt water depth(s) ft 1869' Void(s) encountered (Y/N) depths N
Coal depth(s) ft 858', 953' Cavern(s) encountered (Y/N) depths N
Is coal being mined in area (Y/N) N

RECEIVED
Office of Oil and Gas
JAN 15 2026
WV Department of
Environmental Protection

Reviewed by: _____

04/24/2026

API 47- 049 - 02559 Farm name Marion County Coal Resources Inc. Well number Elliott 14H (L004598)

CASING STRINGS	Hole Size	Casing Size	Depth (GL)	New or Used	Grade wt/ft	Basket Depth(s) (GL)	Did cement circulate (Y/ N) * Provide details below*
Conductor	30"	26"	40'	NEW	A-500 85.6#	N/A	Y
Surface	17-1/2"	13-3/8"	1027'	NEW	J-55 54.5#	N/A	Y
Coal							
Intermediate 1	12-1/4"	9-5/8"	2486'	NEW	J-55 36#	N/A	Y
Intermediate 2							
Intermediate 3							
Production	8-3/4", 8-1/2"	5-1/2"	29,478'	NEW	P-110 20#	N/A	N
Tubing							
Packer type and depth set							

Comment Details _____

Production cmt has calculated TOC of 1237'GL, which is greater than 500'TVD above the producing formation. No issues

CEMENT DATA	Class/Type of Cement	Number of Sacks	Slurry wt (ppg)	Yield (ft ³ /sks)	Volume (ft ³)	Cement Top (GL)	WOC (hrs)
Conductor	CLASS A	83	15.6	1.18	98	0	8+
Surface	CLASS L	945	16.0	1.08	1021	0	8
Coal							
Intermediate 1	CLASS L	900	15.6	1.13	1017	0	8
Intermediate 2							
Intermediate 3							
Production	CLASS A	5560	15.0	1.19	6616	1237'	8+
Tubing							

Drillers TD (ft) 29,499' Loggers TD (ft) N/A
 Deepest formation penetrated MARCELLUS Plug back to (ft) N/A
 Plug back procedure N/A

Kick off depth (ft) 1047'

Check all wireline logs run caliper density deviated/directional induction
 neutron resistivity gamma ray temperature sonic

Well cored Yes No Conventional Sidewall Were cuttings collected Yes No

DESCRIBE THE CENTRALIZER PLACEMENT USED FOR EACH CASING STRING _____
 CONDUCTOR-NONE _____
 SURFACE- ON SHOE TRACK AND EVERY 500' TO SURFACE _____
 INTERMEDIATE: ON SHOE TRACK AND EVERY 500' FEET TO SURFACE _____
 PRODUCTION: ON SHOE TRACK, EVERY OTHER JOINT TO 9024', EVERY JOINT TO 7846', EVERY OTHER JOINT TO 2386' _____

WAS WELL COMPLETED AS SHOT HOLE Yes No DETAILS _____
 RECEIVED
 Office of Oil and Gas

WAS WELL COMPLETED OPEN HOLE? Yes No DETAILS _____
 JAN 15 2026

WERE TRACERS USED Yes No TYPE OF TRACER(S) USED _____
 WV Department of
 Environmental Protection

04/24/2026

API 47- 049 - 02559 Farm name Marion County Coal Resources Inc. Well number Elliott 14H (L004598)

Drilling Contractor Falcon (Rig 25)
Address 1120 US-119 City Indiana State PA Zip 15701

Logging Company GyroData
Address 73 Noblestown Road City Carnegie State PA Zip 15106

Logging Company Scientific Drilling International, Inc
Address 3475 Washington Ave City Finleyville State PA Zip 15332

Cementing Company _____
Address _____ City _____ State _____ Zip _____

RECEIVED
Office of Oil and Gas
JAN 15 2026
WV Department of
Environmental Protection

Well # ELLIOTT 14H Final Formations API# 47-049-02559				
Formation Name	Drill Top MD (ftGRD)	Drill Top (TVD) (ftGRD)	Drill Btm MD (ftGRD)	Drill Btm (TVD) (ftGRD)
Sand/Shale	1	1	858	858
Sewickley Coal	858	858	863	863
Sand/Shale	863	863	953	953
Pittsburgh Coal	953	953	963	963
Sand/Shale	963	963	2,395	2,390
Big Lime	2,395	2,390	2,469	2,464
Big Injun	2,469	2,464	2,570	2,565
Sand/Shale	2,570	2,565	3,059	3,048
Gantz	3,059	3,048	3,113	3,100
Sand/Shale	3,113	3,100	3,167	3,151
50F	3,167	3,151	3,185	3,169
Sand/Shale	3,185	3,169	3,294	3,271
Fifth Sand	3,294	3,271	3,346	3,319
Sand/Shale	3,346	3,319	3,391	3,361
Bayard	3,391	3,361	3,426	3,394
Sand/Shale	3,426	3,394	5,803	5,417
Alexander	5,803	5,417	5,852	5,459
Sand/Shale	5,852	5,459	6,186	5,742
Elks	6,186	5,742	7,884	7,170
Sonyea	7,884	7,170	8,082	7,336
Middlesex	8,082	7,336	8,209	7,438
Genesee	8,209	7,438	8,354	7,546
Geneseo	8,354	7,546	8,408	7,583
Tully	8,408	7,583	8,457	7,614
Hamilton	8,457	7,614	8,665	7,717
Marcellus	8,665	7,717	29,499	7,803

RECEIVED
Office of Oil and Gas

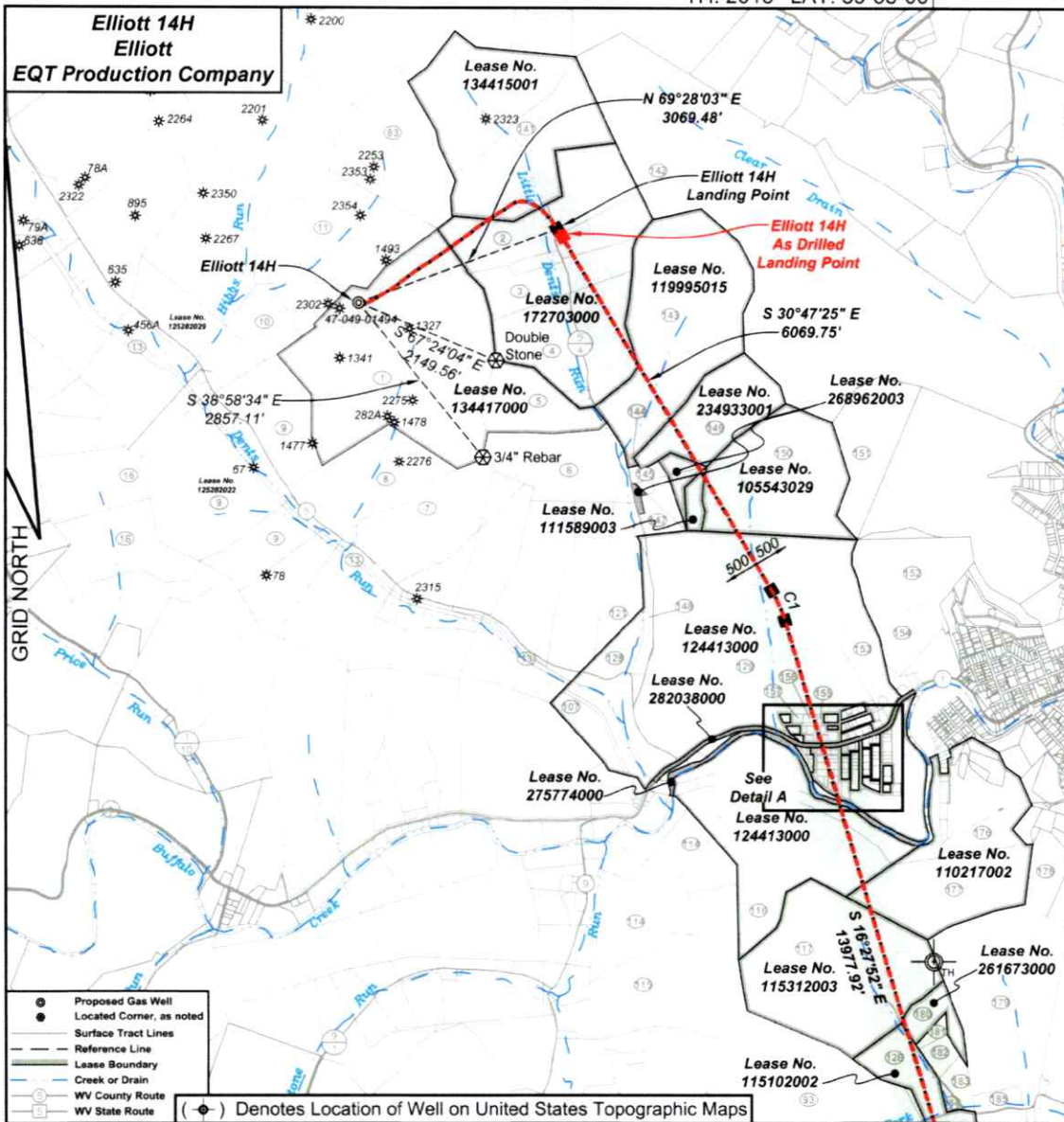
JAN 15 2026

WV Department of
Environmental Protection

04/24/2026

TH: 2013' LAT: 39-35-00

TH: 13793' LONG: 80-22-30



I, the undersigned, hereby certify that this plat is correct to the best of my knowledge and belief and shows all the information required by law and the regulations issued and prescribed by the Department of Environmental Protection.

P.S. 2092



SEAL

FILE NO: 142-22
 DRAWING NO: Elliott 14H
 SCALE: 1" = 2000'
 MINIMUM DEGREE OF ACCURACY: 1:2500
 PROVEN SOURCE OF ELEVATION: NGS CORS Station

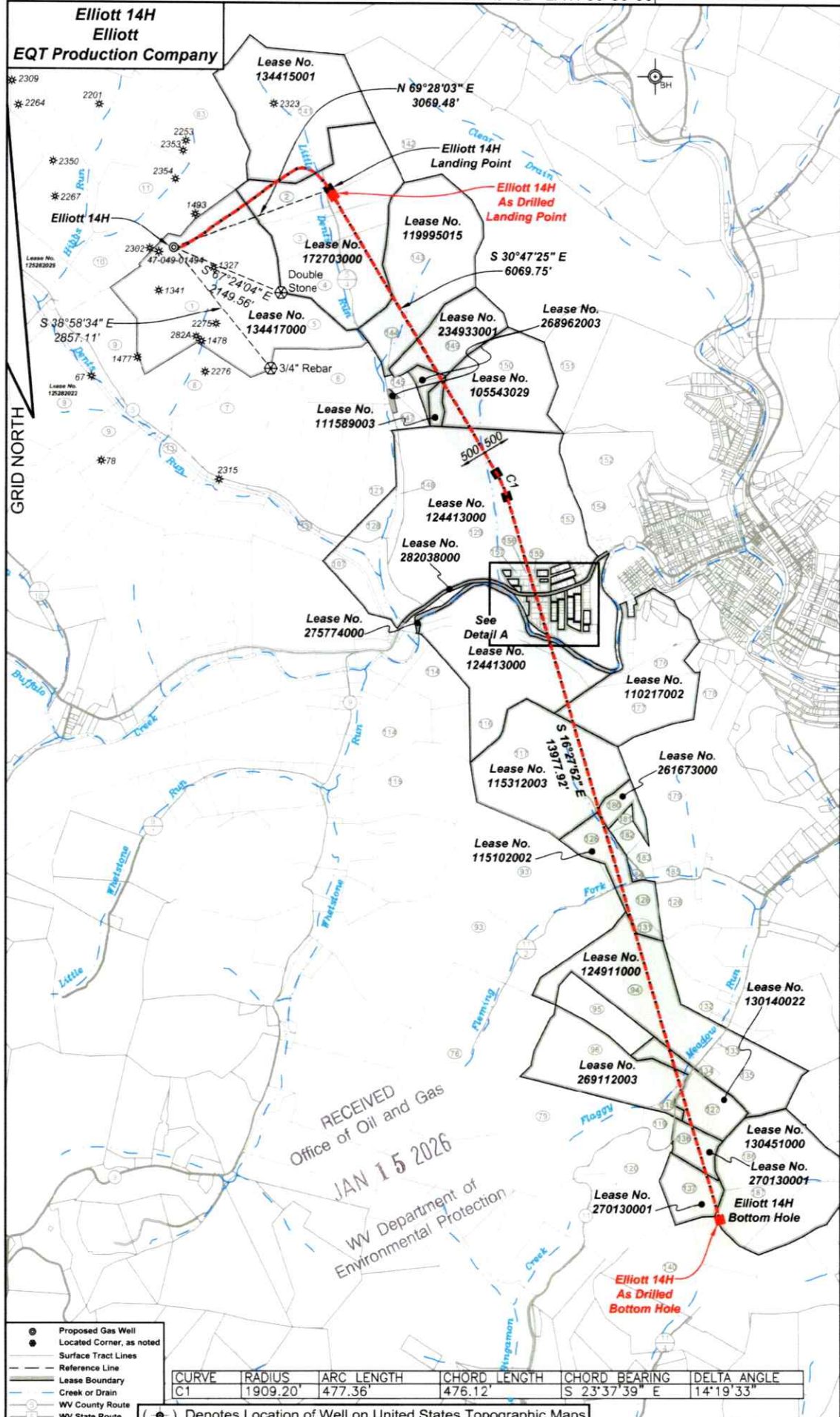
STATE OF WEST VIRGINIA
 DEPARTMENT OF ENVIRONMENTAL PROTECTION
 OIL AND GAS DIVISION

DATE: June 24 20 25
 OPERATOR'S WELL NO.: Elliott 14H
 API WELL NO
 47 - 049 - 02559
 STATE COUNTY PERMIT

WELL TYPE: OIL GAS LIQUID INJECTION WASTE DISPOSAL
 (IF GAS) PRODUCTION: STORAGE DEEP SHALLOW
 LOCATION: ELEVATION: 1342' WATERSHED Tributary of Dents Run QUADRANGLE: Glover Gap
 DISTRICT: Mannington COUNTY: Marion
 SURFACE OWNER: Marion County Coal Resources Inc. ACREAGE: 153.25
 ROYALTY OWNER: Randy J. Elliott, et al. LEASE NO: 134417000 ACREAGE: 183
 PROPOSED WORK: DRILL CONVERT DRILL DEEPER FRACTURE OR STIMULATE PLUG OFF OLD FORMATION
 PERFORATE NEW FORMATION OTHER PHYSICAL CHANGE IN WELL (SPECIFY)
 PLUG AND ABANDON CLEAN OUT AND REPLUG TARGET FORMATION: Marcellus ESTIMATED DEPTH: 7.796'

WELL OPERATOR: EQT Production Company DESIGNATED AGENT: Joseph C. Mallow
 ADDRESS: 400 Woodcliff Drive ADDRESS: 427 Midstate Drive
 Canonsburg, PA 15317 Clarksburg, WV 25301

RECEIVED
 Office of Oil and Gas
 JAN 15 2026
 04/24/2026 Department of Environmental Protection



Elliott 14H
Elliott
EQT Production Company

GRID NORTH

Lease No. 134415001

Elliott 14H Landing Point

Elliott 14H As Drilled Landing Point

Lease No. 172703000

Lease No. 119995015

S 30°47'25" E 6069.75'

S 38°58'34" E 2657.11'

Lease No. 134417000

Lease No. 234933001

Lease No. 268962003

Lease No. 105543029

Lease No. 111589003

Lease No. 124413000

Lease No. 282038000

Lease No. 275774000

See Detail A
Lease No. 124413000

Lease No. 110217002

Lease No. 115312003

Lease No. 261673000

Lease No. 115102002

Lease No. 124911000

Lease No. 130140022

Lease No. 269112003

Lease No. 130451000

Lease No. 270130001

Lease No. 270130001

Elliott 14H Bottom Hole

Elliott 14H As Drilled Bottom Hole

RECEIVED
 Office of Oil and Gas
 JAN 15 2026

WV Department of
 Environmental Protection

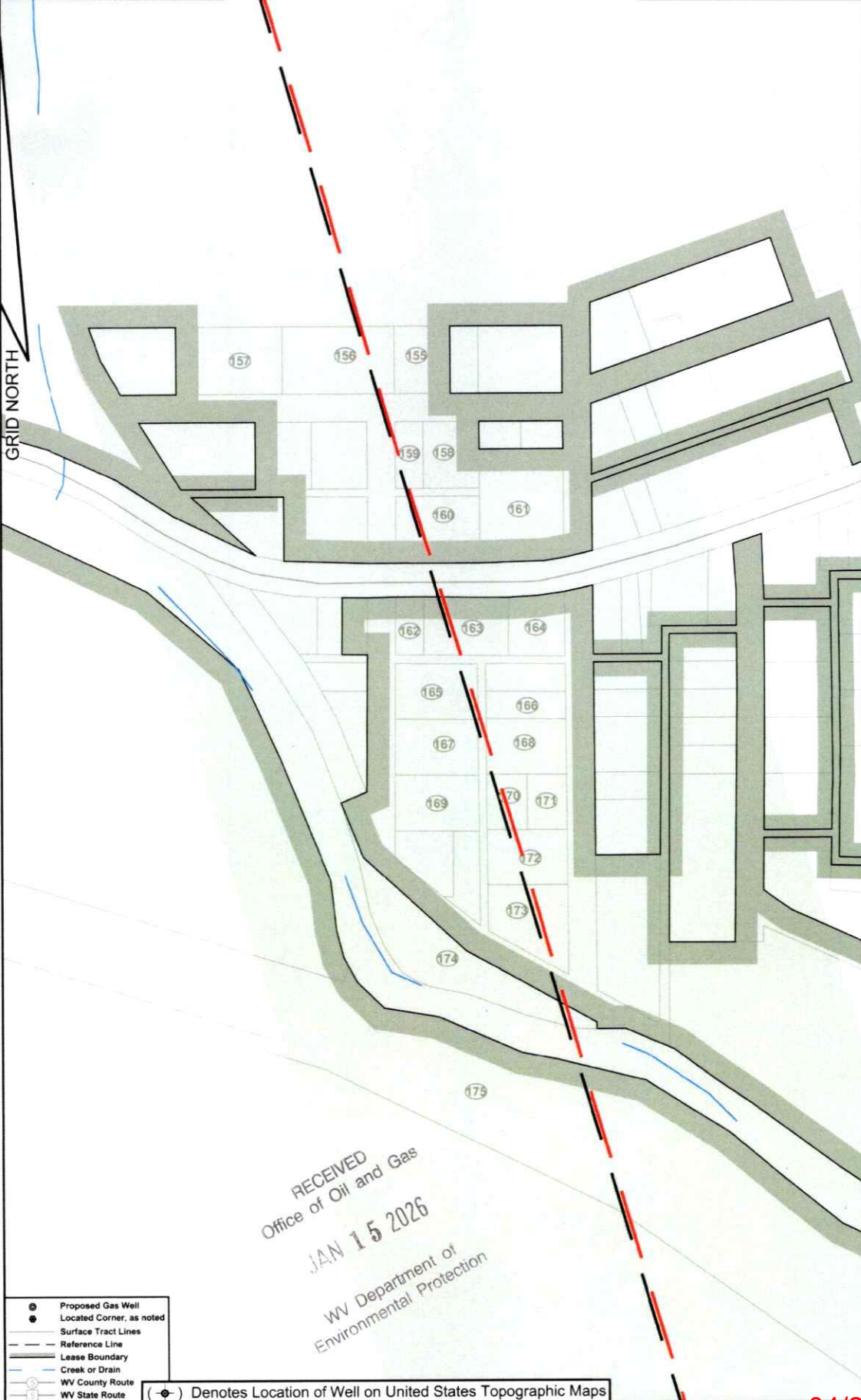
- ⊙ Proposed Gas Well
- Located Corner, as noted
- Surface Tract Lines
- - - Reference Line
- Lease Boundary
- Creek or Drain
- WV County Route
- WV State Route

CURVE	RADIUS	ARC LENGTH	CHORD LENGTH	CHORD BEARING	DELTA ANGLE
C1	1909.20'	477.36'	476.12'	S 23°37'39" E	14°19'33"

(⊙) Denotes Location of Well on United States Topographic Maps

Elliott 14H
Elliott
EQT Production Company

Elliott 14H
Detail A
1" = 200'



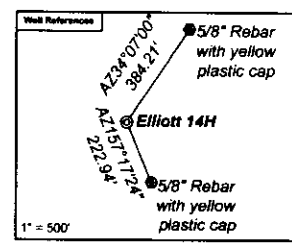
04/24/2026

Elliott 14H
Elliott
EQT Production Company

Tract No.	Map No.	Parent No.	County	Owner
1	34	40	Marion	Marion County Coal Resources Inc.
2	34	40	Marion	Marion County Coal Resources Inc.
3	34	40	Marion	Marion County Coal Resources Inc.
4	34	40	Marion	Marion County Coal Resources Inc.
5	34	40	Marion	Marion County Coal Resources Inc.
6	34	40	Marion	Marion County Coal Resources Inc.
7	34	40	Marion	Marion County Coal Resources Inc.
8	34	40	Marion	Marion County Coal Resources Inc.
9	34	40	Marion	Marion County Coal Resources Inc.
10	34	40	Marion	Marion County Coal Resources Inc.
11	34	40	Marion	Marion County Coal Resources Inc.
12	34	40	Marion	Marion County Coal Resources Inc.
13	34	40	Marion	Marion County Coal Resources Inc.
14	34	40	Marion	Marion County Coal Resources Inc.
15	34	40	Marion	Marion County Coal Resources Inc.
16	34	40	Marion	Marion County Coal Resources Inc.
17	34	40	Marion	Marion County Coal Resources Inc.
18	34	40	Marion	Marion County Coal Resources Inc.
19	34	40	Marion	Marion County Coal Resources Inc.
20	34	40	Marion	Marion County Coal Resources Inc.
21	34	40	Marion	Marion County Coal Resources Inc.
22	34	40	Marion	Marion County Coal Resources Inc.
23	34	40	Marion	Marion County Coal Resources Inc.
24	34	40	Marion	Marion County Coal Resources Inc.
25	34	40	Marion	Marion County Coal Resources Inc.
26	34	40	Marion	Marion County Coal Resources Inc.
27	34	40	Marion	Marion County Coal Resources Inc.
28	34	40	Marion	Marion County Coal Resources Inc.
29	34	40	Marion	Marion County Coal Resources Inc.
30	34	40	Marion	Marion County Coal Resources Inc.
31	34	40	Marion	Marion County Coal Resources Inc.
32	34	40	Marion	Marion County Coal Resources Inc.
33	34	40	Marion	Marion County Coal Resources Inc.
34	34	40	Marion	Marion County Coal Resources Inc.
35	34	40	Marion	Marion County Coal Resources Inc.
36	34	40	Marion	Marion County Coal Resources Inc.
37	34	40	Marion	Marion County Coal Resources Inc.
38	34	40	Marion	Marion County Coal Resources Inc.
39	34	40	Marion	Marion County Coal Resources Inc.
40	34	40	Marion	Marion County Coal Resources Inc.
41	34	40	Marion	Marion County Coal Resources Inc.
42	34	40	Marion	Marion County Coal Resources Inc.
43	34	40	Marion	Marion County Coal Resources Inc.
44	34	40	Marion	Marion County Coal Resources Inc.
45	34	40	Marion	Marion County Coal Resources Inc.
46	34	40	Marion	Marion County Coal Resources Inc.
47	34	40	Marion	Marion County Coal Resources Inc.
48	34	40	Marion	Marion County Coal Resources Inc.
49	34	40	Marion	Marion County Coal Resources Inc.
50	34	40	Marion	Marion County Coal Resources Inc.
51	34	40	Marion	Marion County Coal Resources Inc.
52	34	40	Marion	Marion County Coal Resources Inc.
53	34	40	Marion	Marion County Coal Resources Inc.
54	34	40	Marion	Marion County Coal Resources Inc.
55	34	40	Marion	Marion County Coal Resources Inc.
56	34	40	Marion	Marion County Coal Resources Inc.
57	34	40	Marion	Marion County Coal Resources Inc.
58	34	40	Marion	Marion County Coal Resources Inc.
59	34	40	Marion	Marion County Coal Resources Inc.
60	34	40	Marion	Marion County Coal Resources Inc.
61	34	40	Marion	Marion County Coal Resources Inc.
62	34	40	Marion	Marion County Coal Resources Inc.
63	34	40	Marion	Marion County Coal Resources Inc.
64	34	40	Marion	Marion County Coal Resources Inc.
65	34	40	Marion	Marion County Coal Resources Inc.
66	34	40	Marion	Marion County Coal Resources Inc.
67	34	40	Marion	Marion County Coal Resources Inc.
68	34	40	Marion	Marion County Coal Resources Inc.
69	34	40	Marion	Marion County Coal Resources Inc.
70	34	40	Marion	Marion County Coal Resources Inc.
71	34	40	Marion	Marion County Coal Resources Inc.
72	34	40	Marion	Marion County Coal Resources Inc.
73	34	40	Marion	Marion County Coal Resources Inc.
74	34	40	Marion	Marion County Coal Resources Inc.
75	34	40	Marion	Marion County Coal Resources Inc.
76	34	40	Marion	Marion County Coal Resources Inc.
77	34	40	Marion	Marion County Coal Resources Inc.
78	34	40	Marion	Marion County Coal Resources Inc.
79	34	40	Marion	Marion County Coal Resources Inc.
80	34	40	Marion	Marion County Coal Resources Inc.
81	34	40	Marion	Marion County Coal Resources Inc.
82	34	40	Marion	Marion County Coal Resources Inc.
83	34	40	Marion	Marion County Coal Resources Inc.
84	34	40	Marion	Marion County Coal Resources Inc.
85	34	40	Marion	Marion County Coal Resources Inc.
86	34	40	Marion	Marion County Coal Resources Inc.
87	34	40	Marion	Marion County Coal Resources Inc.

Tract No.	Map No.	Parent No.	County	Owner	Acres
1	34	40	Marion	Marion County Coal Resources Inc.	123.20
2	34	40	Marion	Marion County Coal Resources Inc.	21.78
3	34	40	Marion	Marion County Coal Resources Inc.	28
4	34	40	Marion	Marion County Coal Resources Inc.	106.074
5	34	40	Marion	Marion County Coal Resources Inc.	29.75
6	34	40	Marion	Marion County Coal Resources Inc.	12.5
7	34	40	Marion	Marion County Coal Resources Inc.	47
8	34	40	Marion	Marion County Coal Resources Inc.	47.71
9	34	40	Marion	Marion County Coal Resources Inc.	134
10	34	40	Marion	Marion County Coal Resources Inc.	17
11	34	40	Marion	Marion County Coal Resources Inc.	139.37
12	34	40	Marion	Marion County Coal Resources Inc.	116.7
13	34	40	Marion	Marion County Coal Resources Inc.	139
14	34	40	Marion	Marion County Coal Resources Inc.	84.26
15	34	40	Marion	Marion County Coal Resources Inc.	NA
16	34	40	Marion	Marion County Coal Resources Inc.	NA
17	34	40	Marion	Marion County Coal Resources Inc.	NA
18	34	40	Marion	Marion County Coal Resources Inc.	NA
19	34	40	Marion	Marion County Coal Resources Inc.	NA
20	34	40	Marion	Marion County Coal Resources Inc.	NA
21	34	40	Marion	Marion County Coal Resources Inc.	NA
22	34	40	Marion	Marion County Coal Resources Inc.	NA
23	34	40	Marion	Marion County Coal Resources Inc.	NA
24	34	40	Marion	Marion County Coal Resources Inc.	NA
25	34	40	Marion	Marion County Coal Resources Inc.	NA
26	34	40	Marion	Marion County Coal Resources Inc.	NA
27	34	40	Marion	Marion County Coal Resources Inc.	NA
28	34	40	Marion	Marion County Coal Resources Inc.	NA
29	34	40	Marion	Marion County Coal Resources Inc.	NA
30	34	40	Marion	Marion County Coal Resources Inc.	NA
31	34	40	Marion	Marion County Coal Resources Inc.	NA
32	34	40	Marion	Marion County Coal Resources Inc.	NA
33	34	40	Marion	Marion County Coal Resources Inc.	NA
34	34	40	Marion	Marion County Coal Resources Inc.	NA
35	34	40	Marion	Marion County Coal Resources Inc.	NA
36	34	40	Marion	Marion County Coal Resources Inc.	NA
37	34	40	Marion	Marion County Coal Resources Inc.	NA
38	34	40	Marion	Marion County Coal Resources Inc.	NA
39	34	40	Marion	Marion County Coal Resources Inc.	NA
40	34	40	Marion	Marion County Coal Resources Inc.	NA
41	34	40	Marion	Marion County Coal Resources Inc.	NA
42	34	40	Marion	Marion County Coal Resources Inc.	NA
43	34	40	Marion	Marion County Coal Resources Inc.	NA
44	34	40	Marion	Marion County Coal Resources Inc.	NA
45	34	40	Marion	Marion County Coal Resources Inc.	NA
46	34	40	Marion	Marion County Coal Resources Inc.	NA
47	34	40	Marion	Marion County Coal Resources Inc.	NA
48	34	40	Marion	Marion County Coal Resources Inc.	NA
49	34	40	Marion	Marion County Coal Resources Inc.	NA
50	34	40	Marion	Marion County Coal Resources Inc.	NA
51	34	40	Marion	Marion County Coal Resources Inc.	NA
52	34	40	Marion	Marion County Coal Resources Inc.	NA
53	34	40	Marion	Marion County Coal Resources Inc.	NA
54	34	40	Marion	Marion County Coal Resources Inc.	NA
55	34	40	Marion	Marion County Coal Resources Inc.	NA
56	34	40	Marion	Marion County Coal Resources Inc.	NA
57	34	40	Marion	Marion County Coal Resources Inc.	NA
58	34	40	Marion	Marion County Coal Resources Inc.	NA
59	34	40	Marion	Marion County Coal Resources Inc.	NA
60	34	40	Marion	Marion County Coal Resources Inc.	NA
61	34	40	Marion	Marion County Coal Resources Inc.	NA
62	34	40	Marion	Marion County Coal Resources Inc.	NA
63	34	40	Marion	Marion County Coal Resources Inc.	NA
64	34	40	Marion	Marion County Coal Resources Inc.	NA
65	34	40	Marion	Marion County Coal Resources Inc.	NA
66	34	40	Marion	Marion County Coal Resources Inc.	NA
67	34	40	Marion	Marion County Coal Resources Inc.	NA
68	34	40	Marion	Marion County Coal Resources Inc.	NA
69	34	40	Marion	Marion County Coal Resources Inc.	NA
70	34	40	Marion	Marion County Coal Resources Inc.	NA
71	34	40	Marion	Marion County Coal Resources Inc.	NA
72	34	40	Marion	Marion County Coal Resources Inc.	NA
73	34	40	Marion	Marion County Coal Resources Inc.	NA
74	34	40	Marion	Marion County Coal Resources Inc.	NA
75	34	40	Marion	Marion County Coal Resources Inc.	NA
76	34	40	Marion	Marion County Coal Resources Inc.	NA
77	34	40	Marion	Marion County Coal Resources Inc.	NA
78	34	40	Marion	Marion County Coal Resources Inc.	NA
79	34	40	Marion	Marion County Coal Resources Inc.	NA
80	34	40	Marion	Marion County Coal Resources Inc.	NA
81	34	40	Marion	Marion County Coal Resources Inc.	NA
82	34	40	Marion	Marion County Coal Resources Inc.	NA
83	34	40	Marion	Marion County Coal Resources Inc.	NA
84	34	40	Marion	Marion County Coal Resources Inc.	NA
85	34	40	Marion	Marion County Coal Resources Inc.	NA
86	34	40	Marion	Marion County Coal Resources Inc.	NA
87	34	40	Marion	Marion County Coal Resources Inc.	NA

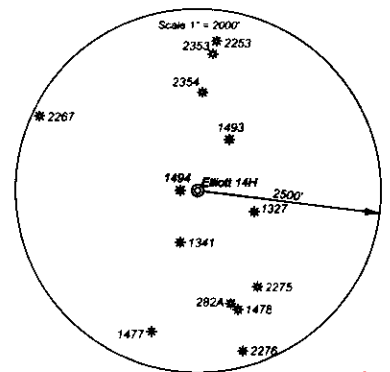
As-Drilled Well Information:
Elliott 14H coordinates are
NAD 27 N: 382,001.45 E: 1,751,239.04
NAD 83 UTM N: 4,377,501.84 E: 553,106.32
Elliott 14H Landing Point coordinates are
NAD 27 N: 382,968.52 E: 1,754,188.56
NAD 83 UTM N: 4,377,811.46 E: 553,999.03
Elliott 14H Bottom Hole coordinates are
NAD 27 N: 364,022.96 E: 1,761,373.06
NAD 83 UTM N: 4,372,075.90 E: 556,283.99
West Virginia Coordinate system of 1927 (North Zone)
based upon Differential GPS Measurements.
Plat orientation, corner and well ties are based upon
the grid north meridian.
Well location references are based upon the grid north
meridian.
UTM coordinates are NAD83, Zone 17, Meters.



- Elliott**
- Elliott 17H 47-049-02506
 - Elliott 15H 47-049-02505
 - Elliott 13H 47-049-02504
 - Elliott 11H 47-049-02503
 - Elliott 9H 47-049-02498
 - Elliott 7H 47-049-02502
 - Elliott 5H 47-049-02501
 - Elliott 3H 47-049-02499
 - Elliott 16H 47-049-02550
 - Elliott 14H 47-049-02556
 - Elliott 12H 47-049-02558
 - Elliott 10H 47-049-02557
 - Elliott 8H 47-049-02556
 - Elliott 6H 47-049-02555
 - Elliott 4H 47-049-02554
 - Elliott 2H 47-049-02553

Lease No.	Owner	Acres
134417000	Randy J. Elliott, et al.	183
172703000	EQT Production Company, et al.	90 125 & 63
134415001	Oyeda AD, LLC, et al.	117
119895015	Lee and Hall Royalties, et al.	109.50
234633001	J&H Management Enterprises, LLC, et al.	43.5
268662003	Newton S. Beatty Families Trust, et al.	11.5
111589003	AMP IV, LP, et al.	4.773
105543029	Margaret J. Smith, et al.	85
124413000	Newton S. Beatty Families Trust	427.153
282038000	West Virginia Department of Transportation, Division of Highways	5.06
275774000	West Virginia Department of Natural Resources	10.9607
110217002	George W. Bowers Charitable Trust, et al.	106
115312003	Elizabeth Robe Lathrop, et al.	108.5
261673000	County Roads Minerals, LLC	6.93
115102002	Barbara G. Penfield, et al.	32.036
124311000	Deborah A. Ellis, et al.	120
130140022	Jonathan Ward Griffin, et al.	27,525 of 97.745
289112003	Eric Daniels, et al.	95.02
270130001	Steven Gayle Justice	13.5032 of 244.027
270130001	Steven Gayle Justice	25.810 of 244.027
130451000	Cara Lee Stasak, et al.	243

RECEIVED
Office of Oil and Gas
JAN 15 2026
WV Department of
Environmental Protection



04/24/2026

Perforation Data

Stage No.	Perforation Date	Stage Perforated From TMD FL	Stage Perforated To TMD FL	# of Perforations/Stage	Formation(s)
2	07/30/2025	29421	29239	40	Marcellus
3	07/30/2025	29220	29039	40	Marcellus
4	07/31/2025	29019	28837	40	Marcellus
5	07/31/2025	28818	28636	40	Marcellus
6	08/01/2025	28617	28435	40	Marcellus
7	08/02/2025	28416	28234	40	Marcellus
8	08/08/2025	28215	28033	40	Marcellus
9	08/08/2025	28014	27832	40	Marcellus
10	08/09/2025	27813	27631	40	Marcellus
11	08/09/2025	27612	27430	40	Marcellus
12	08/09/2025	27411	27229	40	Marcellus
13	08/09/2025	27210	27028	40	Marcellus
14	08/10/2025	27009	26827	40	Marcellus
15	08/10/2025	26808	26626	40	Marcellus
16	08/10/2025	26607	26425	40	Marcellus
17	08/11/2025	26406	26224	40	Marcellus
18	08/11/2025	26205	26023	40	Marcellus
19	08/12/2025	26004	25822	40	Marcellus
20	08/12/2025	25803	25621	40	Marcellus
21	08/12/2025	25602	25420	40	Marcellus
22	08/13/2025	25401	25219	40	Marcellus
23	08/13/2025	25200	25018	40	Marcellus
24	08/14/2025	24999	24817	40	Marcellus
25	08/14/2025	24798	24616	40	Marcellus
26	08/14/2025	24597	24415	40	Marcellus
27	08/14/2025	24396	24214	40	Marcellus
28	08/15/2025	24195	24013	40	Marcellus
29	08/15/2025	23994	23812	40	Marcellus
30	08/15/2025	23793	23611	40	Marcellus
31	08/16/2025	23592	23410	40	Marcellus
32	08/16/2025	23391	23209	40	Marcellus
33	08/16/2025	23190	23008	40	Marcellus
34	08/16/2025	22989	22807	40	Marcellus
35	08/17/2025	22788	22606	40	Marcellus
36	08/17/2025	22587	22405	40	Marcellus
37	08/17/2025	22386	22204	40	Marcellus
38	08/17/2025	22185	22003	40	Marcellus
39	08/17/2025	21984	21802	40	Marcellus
40	08/18/2025	21783	21601	40	Marcellus
41	08/18/2025	21582	21400	40	Marcellus
42	08/18/2025	21381	21199	40	Marcellus
43	08/18/2025	21180	20998	40	Marcellus
44	08/18/2025	20979	20797	40	Marcellus

04/24/2026

45	08/19/2025	20778	20596	40	Marcellus
46	08/19/2025	20577	20395	40	Marcellus
47	08/19/2025	20376	20194	40	Marcellus
48	08/19/2025	20175	19993	40	Marcellus
49	08/20/2025	19974	19792	40	Marcellus
50	08/21/2025	19773	19591	40	Marcellus
51	08/21/2025	19572	19390	40	Marcellus
52	08/21/2025	19371	19189	40	Marcellus
53	08/22/2025	19170	18988	40	Marcellus
54	08/22/2025	18969	18787	40	Marcellus
55	08/23/2025	18768	18586	40	Marcellus
56	08/23/2025	18567	18385	40	Marcellus
57	08/24/2025	18366	18184	40	Marcellus
58	08/24/2025	18165	17983	40	Marcellus
59	08/24/2025	17964	17782	40	Marcellus
60	08/25/2025	17763	17581	40	Marcellus
61	08/25/2025	17562	17380	40	Marcellus
62	08/25/2025	17361	17179	40	Marcellus
63	08/26/2025	17160	16978	40	Marcellus
64	08/26/2025	16959	16777	40	Marcellus
65	08/26/2025	16758	16576	40	Marcellus
66	08/27/2025	16557	16375	40	Marcellus
67	08/27/2025	16356	16174	40	Marcellus
68	08/27/2025	16155	15973	40	Marcellus
69	08/28/2025	15954	15772	40	Marcellus
70	08/28/2025	15753	15571	40	Marcellus
71	08/28/2025	15552	15370	40	Marcellus
72	08/29/2025	15351	15169	40	Marcellus
73	08/29/2025	15150	14968	40	Marcellus
74	08/29/2025	14949	14767	40	Marcellus
75	08/29/2025	14748	14566	40	Marcellus
76	08/30/2025	14547	14365	40	Marcellus
77	08/30/2025	14346	14164	40	Marcellus
78	08/31/2025	14145	13963	40	Marcellus
79	08/31/2025	13944	13762	40	Marcellus
80	08/31/2025	13743	13561	40	Marcellus
81	09/01/2025	13542	13360	40	Marcellus
82	09/01/2025	13341	13159	40	Marcellus
83	09/01/2025	13140	12958	40	Marcellus
84	09/02/2025	12939	12757	40	Marcellus
85	09/02/2025	12738	12556	40	Marcellus
86	09/02/2025	12537	12355	40	Marcellus
87	09/03/2025	12336	12154	40	Marcellus
88	09/03/2025	12135	11953	40	Marcellus
89	09/04/2025	11934	11752	40	Marcellus
90	09/04/2025	11733	11551	40	Marcellus
91	09/04/2025	11532	11350	40	Marcellus

04/24/2026

92	09/05/2025	11331	11149	40	Marcellus
93	09/05/2025	11130	10948	40	Marcellus
94	09/05/2025	10929	10747	40	Marcellus
95	09/06/2025	10728	10546	40	Marcellus
96	09/06/2025	10527	10345	40	Marcellus
97	09/06/2025	10326	10144	40	Marcellus
98	09/06/2025	10125	9943	40	Marcellus
99	09/07/2025	9924	9742	40	Marcellus
100	09/07/2025	9723	9541	40	Marcellus
101	09/07/2025	9522	9340	40	Marcellus
102	09/08/2025	9321	9139	40	Marcellus
103	09/08/2025	9120	8938	40	Marcellus
104	09/08/2025	8919	8778	32	Marcellus

Stimulation Data

Stage #	Simulation Date	Ave Pump Rate (SPM)	Ave Treatment Pressure (PSI)	Max Breakdown Pressure (PSI)	(SIP (PSI)	Amount of Proppant (lbs)	Amount of Water (bbls)	Amount of Nitrogen/other (units)
1	07/30/2025	75	11118	9296	4165	176034	4359.000	
2	07/30/2025	84	10499	6192	4587	440263	11317.000	
3	07/31/2025	94	11336	7648	5895	440068	10511.000	
4	07/31/2025	94	11413	7644	5432	439982	10528.000	
5	08/01/2025	92	11372	7470	5124	440219	10541.000	
6	08/02/2025	92	11397	7473	5229	440118	10436.000	
7	08/08/2025	93	11181	7506	5545	440101	10559.000	
8	08/08/2025	93	11269	7387	5712	440035	10575.000	
9	08/09/2025	96	11201	7712	5778	440891	10541.000	
10	08/09/2025	94	11246	7416	5860	440088	10530.001	
11	08/09/2025	93	10998	7337	4846	440142	10762.000	
12	08/09/2025	97	11019	5750	5584	440037	10477.000	
13	08/10/2025	97	11132	7395	5515	439986	10397.000	
14	08/10/2025	97	11127	6936	6100	440147	10371.000	
15	08/10/2025	97	11124	7456	7448	440089	10368.000	
16	08/11/2025	96	11221	7559	6037	439944	10360.853	
17	08/11/2025	97	10987	7082	5310	440102	10298.000	
18	08/12/2025	96	10711	6081	5617	440215	11480.000	
19	08/12/2025	98	10859	6968	5551	440027	10601.000	
20	08/12/2025	98	10728	7251	5204	440600	10279.000	
21	08/13/2025	98	10929	6835	5947	440204	10452.000	
22	08/13/2025	97	10719	7364	5550	440251	10315.000	
23	08/13/2025	98	10775	6820	5988	440010	10281.000	
24	08/14/2025	98	10717	6522	7202	440197	10288.000	
25	08/14/2025	97	10927	7115	5550	440110	10185.000	
26	08/14/2025	97	10878	7646	6913	440106	10197.000	
27	08/15/2025	97	10887	6943	6250	439993	10334.000	
28	08/15/2025	98	10770	7088	7272	440048	10257.000	
29	08/15/2025	98	10023	5684	5714	440016	10163.000	
30	08/16/2025	98	9982	5695	5547	440047	10220.000	
31	08/16/2025	97	10726	7486	5422	440014	10206.000	
32	08/16/2025	97	10834	6506	5583	439991	10362.000	
33	08/16/2025	98	10937	7183	6915	440045	10208.000	
34	08/17/2025	99	10010	5966	5448	440126	10227.000	
35	08/17/2025	98	10065	6553	6526	439805	10245.000	
36	08/17/2025	99	9972	4865	5684	439924	10157.000	
37	08/17/2025	99	10991	6452	5934	440038	10161.000	
38	08/17/2025	99	10814	6949	5480	440029	10210.000	
39	08/18/2025	99	10850	7109	5509	440016	10191.000	
40	08/18/2025	98	10400	7456	5213	377347	10834.000	
41	08/18/2025	98	10232	5147	5633	440403	10155.000	
42	08/18/2025	99	10944	6820	5468	439914	10119.000	
43	08/18/2025	100	10743	6770	4761	440146	10172.000	

04/24/2026

44	08/19/2025	100	9954	6707	6271	439985	10151.000
45	08/19/2025	100	9692	6255	5130	439977	10194.000
46	08/19/2025	100	10436	7248	5301	440068	10082.000
47	08/19/2025	96	10058	6383	5612	440051	10086.000
48	08/20/2025	96	10018	5622	5648	439324	10074.000
49	08/20/2025	96	10079	6211	7339	440033	10032.000
50	08/21/2025	99	9981	6940	5640	440006	10123.000
51	08/21/2025	100	9928	5260	5451	440102	10133.000
52	08/22/2025	100	9956	7247	5327	440097	10181.000
53	08/22/2025	100	9877	6037	6884	439985	10058.000
54	08/23/2025	100	9857	6229	5425	439967	10171.000
55	08/23/2025	100	9913	6609	5461	440004	10145.000
56	08/24/2025	100	9869	6011	6326	440029	10063.000
57	08/24/2025	100	9802	4770	5800	440096	10128.000
58	08/24/2025	100	9974	7525	6071	440165	10032.000
59	08/25/2025	100	9825	5476	5548	440140	10107.000
60	08/25/2025	98	9942	6537	5256	440004	9836.000
61	08/25/2025	99	9736	5444	5186	439965	10210.000
62	08/26/2025	98	9911	6100	5510	440052	9829.000
63	08/26/2025	100	9742	6082	5409	440013	10050.001
64	08/26/2025	100	9851	5933	4633	439991	9991.000
65	08/27/2025	100	9807	5032	5443	440075	10028.999
66	08/27/2025	100	9853	7152	5536	439915	10051.000
67	08/27/2025	100	9695	5334	5344	440476	9840.000
68	08/27/2025	100	9801	6609	4993	439959	9968.000
69	08/28/2025	100	9432	4684	5909	440115	9978.000
70	08/28/2025	99	9543	5855	6376	440068	9518.000
71	08/29/2025	100	9759	6740	6773	439994	9972.001
72	08/29/2025	100	9350	5636	4950	440116	9792.000
73	08/29/2025	100	9541	6011	5164	440040	9884.000
74	08/30/2025	100	9812	5001	5625	439933	9834.000
75	08/30/2025	100	9653	7712	6741	440066	9937.000
76	08/30/2025	99	9501	5091	5872	440093	9925.999
77	08/31/2025	100	9628	4209	6352	439999	9973.837
78	08/31/2025	100	9522	5548	5537	440004	9898.000
79	08/31/2025	100	9669	6187	6583	440070	9929.000
80	09/01/2025	100	9436	5122	6080	440007	9900.001
81	09/01/2025	100	9390	4521	5453	440048	9885.000
82	09/01/2025	95	8683	4928	5107	440002	9896.000
83	09/02/2025	100	9477	4864	7003	439923	9859.000
84	09/02/2025	100	9277	3983	7594	439965	9880.000
85	09/02/2025	100	9743	7207	5500	440062	9860.000
86	09/03/2025	100	9811	5747	5755	439999	9839.000
87	09/03/2025	100	9754	6777	5357	440059	9826.000
88	09/04/2025	100	9351	5028	4954	440089	9850.000
89	09/04/2025	100	9432	6894	6005	440011	9851.000
90	09/04/2025	100	9531	6348	5568	439960	9839.000

04/24/2026

91	09/05/2025	100	9518	5310	5106	440091	9842.000
92	09/05/2025	100	9209	5357	5956	439995	9813.000
93	09/05/2025	100	9685	6667	5373	440066	9796.000
94	09/05/2025	100	9656	6636	4803	440094	9834.000
95	09/06/2025	100	9657	6858	5123	439976	9812.000
96	09/06/2025	100	9414	6434	NA	439977	9781.000
97	09/06/2025	100	9677	7410	5289	440065	9768.000
98	09/07/2025	100	9490	5730	5234	439993	9783.000
99	09/07/2025	100	9450	6768	5365	440052	9721.000
100	09/07/2025	100	9464	6785	5698	440088	9765.000
101	09/08/2025	100	9491	6149	5330	440359	9795.000
102	09/08/2025	100	9410	6345	5717	440132	9751.000
103	09/08/2025	100	9080	4943	5035	440065	9746.000
104	09/09/2025	100	8843	6075	4868	352459	7856.000

Hydraulic Fracturing Fluid Product Component Information Disclosure



Job Start Date:	07/30/2025
Job End Date:	10/03/2025
State:	West Virginia
County:	Marion
API Number:	47-049-02559-00-00
Operator Name:	EQT Production
Well Name and Number:	Elliott 14H
Latitude:	39.545548
Longitude:	-80.381944
Datum:	NAD83
Federal Well:	NO
Indian Well:	NO
True Vertical Depth:	7864
Total Base Water Volume (gal)*:	43893515.07
Total Base Non Water Volume:	0

Water Source	Percent
--------------	---------

RECEIVED
Office of Oil and Gas
JAN 15 2026
WV Department of
Environmental Protection

Hydraulic Fracturing Fluid Composition:

Trade Name	Supplier	Purpose	Ingredients	Chemical Abstract Service Number (CAS #)	Maximum Ingredient Concentration in Additive (% by mass)**	Maximum Ingredient Concentration in HF Fluid (% by mass)**	Comments
Water	EQT	Carrier/Base Fluid					
			Water	7732-18-5	100.00000	75.21138	None
Sand (Proppant)	EQT	Proppant					
			Silica Substrate	14808-60-7	100.00000	24.67760	None
StimSTREAM FR 9800	ChemStream, Inc.	Friction Reducer					
			ALKANES, C12-26-BRANCHED AND LINEAR	90622-53-0	40.00000	0.01020	None
StimSTREAM FR 9800	ChemStream, Inc.	Friction Reducer					
			ACRYLAMIDE-CHLORIDE SALT OF TRIMETHYLAMMONIO-ETHYL ACRYLATE COPOLYMER	69418-26-4	40.00000	0.01020	None
Clearal 268	ChemStream, Inc.	Biocide					

04/24/2026

			Water	7732-18-5	80.00000	0.00659	None
StimSTREAM FR 9800	ChemStream, Inc.	Friction Reducer					
			Water	7732-18-5	15.00000	0.00143	None
Enviro-Syn HCR-7000-WL	Fluid Energy Group Ltd.	Acid					
			FLUID-Acid-00001	Proprietary	20.00000	0.00119	None
Clearal 268	ChemStream, Inc.	Biocide					
			Glutaraldehyde	111-30-8	20.00000	0.00041	None
Diversion Agent J705	Schlumberger Technology Corporation	Diverter					
			Cellulose	9004-34-6	100.00000	0.00037	None
Enviro-Syn HCR-7000-WL	Fluid Energy Group Ltd.	Acid					
			FLUID-Amine-00001	Proprietary	10.00000	0.00030	None
StimSTREAM FR 9800	ChemStream, Inc.	Friction Reducer					
			ETHOXYLATED ALCOHOLS (C12-16)	68551-12-2	5.00000	0.00016	None
Diversion Agent J705	Schlumberger Technology Corporation	Diverter					
			White mineral oil (petroleum)	8042-47-5	30.00000	0.00003	None
StimSTREAM SC-398	ChemStream, Inc.	Scale Inhibitor					
			AA/ATBS Co-polymer	9003-05-8	5.00000	0.00002	None
Clearal 268	ChemStream, Inc.	Biocide					
			Quaternary Ammonium Compounds	68424-85-1	3.00000	0.00001	None
Clearal 268	ChemStream, Inc.	Biocide					
			Didecyl dimethyl ammonium chloride	7173-51-5	3.00000	0.00001	None
Clearal 268	ChemStream, Inc.	Biocide					
			Ethanol	64-17-5	1.50000	0.00000	None
StimSTREAM SC-398	ChemStream, Inc.	Scale Inhibitor					
			AA/Maleic Anhydride Co-polymer	9003-04-7	1.00000	0.00000	None

04/24/2026

Ingredients shown above are subject to 29 CFR 1910.1200(i) and appear on Material Safety Data Sheets (MSDS). Ingredients shown below are Non-MSDS

* Total Water Volume sources may include various types of water including fresh water, produced water, and recycled water

** Information is based on the maximum potential for concentration and thus the total may be over 100%

Note: For Field Development Products (products that begin with FDP), MSDS level only information has been provided.

Ingredient information for chemicals subject to 29 CFR 1910.1200(i) and Appendix D are obtained from suppliers Material Safety Data Sheets (MSDS)

04/24/2026

Well Operator's Report of Well Work



Well Number: Elliott 14H (L004598)

API: 47 - 049 - 02559

Submission: Initial Amended

Notes:

APPROVED APR 14 2026
Robert [Signature]

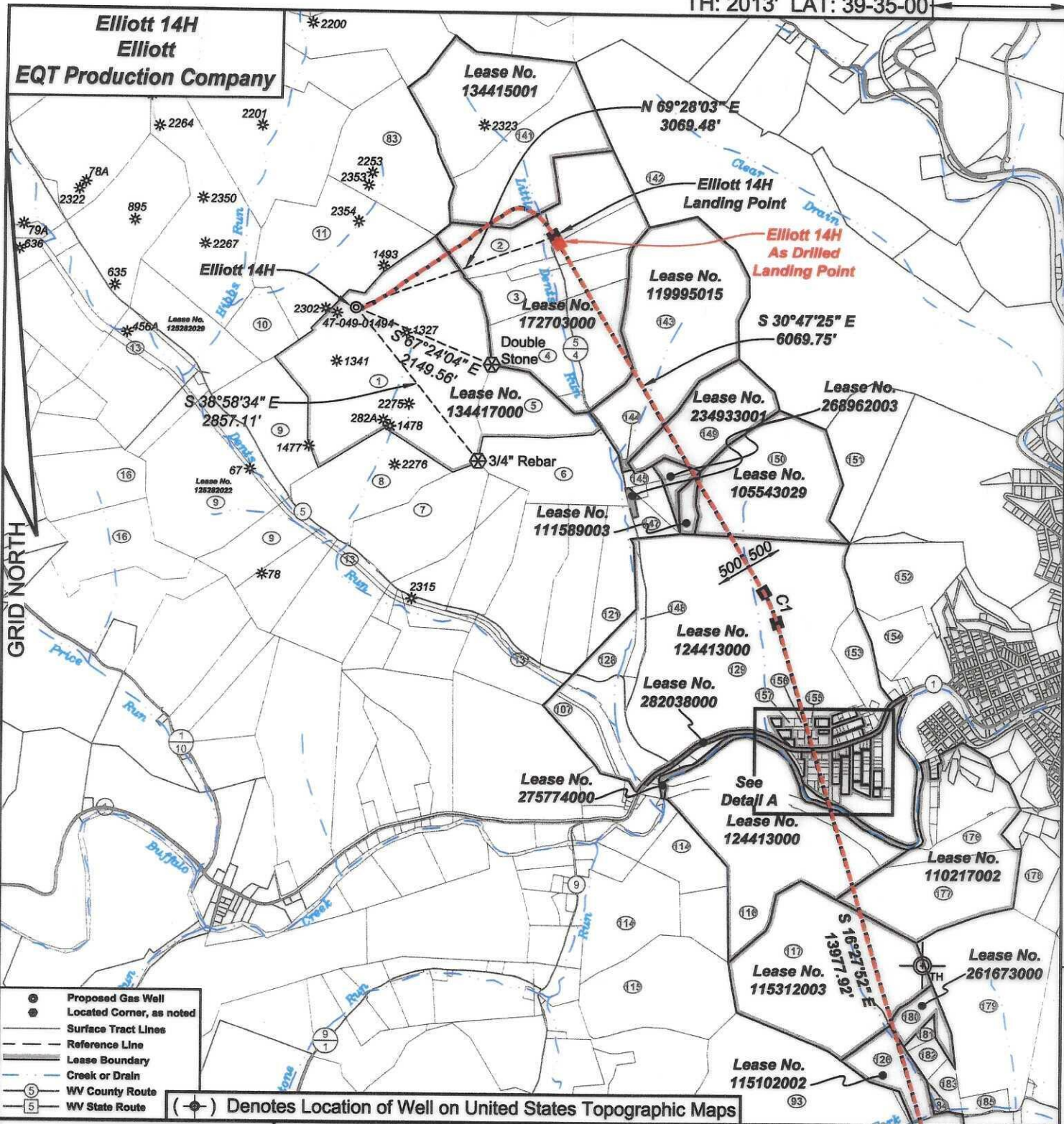
RECEIVED
Office of Oil and Gas

JAN 15 2026

WV Department of
Environmental Protection

04/24/2026

Elliott 14H
Elliott
EQT Production Company



- Proposed Gas Well
- Located Corner, as noted
- Surface Tract Lines
- - - Reference Line
- Lease Boundary
- Creek or Drain
- ⑤ WV County Route
- ⑤ WV State Route

(●) Denotes Location of Well on United States Topographic Maps



I, the undersigned, hereby certify that this plat is correct to the best of my knowledge and belief and shows all the information required by law and the regulations issued and prescribed by the Department of Environmental Protection.

Ben R. Singleton
P.S. 2092



SEAL

FILE NO: 142-22
 DRAWING NO: Elliott 14H
 SCALE: 1" = 2000'
 MINIMUM DEGREE OF ACCURACY: 1:2500
 PROVEN SOURCE OF ELEVATION: NGS CORS Station

STATE OF WEST VIRGINIA
 DEPARTMENT OF ENVIRONMENTAL PROTECTION
OIL AND GAS DIVISION

DATE: June 24 20 25
 OPERATOR'S WELL NO.: Elliott 14H
 API WELL NO
 47 - 049 - 02559
 STATE COUNTY PERMIT

WELL TYPE: OIL GAS LIQUID INJECTION WASTE DISPOSAL
 (IF GAS) PRODUCTION: STORAGE DEEP SHALLOW
 LOCATION: ELEVATION: 1342' WATERSHED Tributary of Dents Run QUADRANGLE: Glover Gap
 DISTRICT: Mannington COUNTY: Marion
 SURFACE OWNER: Marion County Coal Resources Inc. ACREAGE: 153.25
 ROYALTY OWNER: Randy J. Elliott, et al. LEASE NO: 134417000 ACREAGE: 183
 PROPOSED WORK: DRILL CONVERT DRILL DEEPER FRACTURE OR STIMULATE PLUG OFF OLD FORMATION
 PERFORATE NEW FORMATION OTHER PHYSICAL CHANGE IN WELL (SPECIFY)
 PLUG AND ABANDON CLEAN OUT AND REPLUG TARGET FORMATION: Marcellus ESTIMATED DEPTH: 7,796'

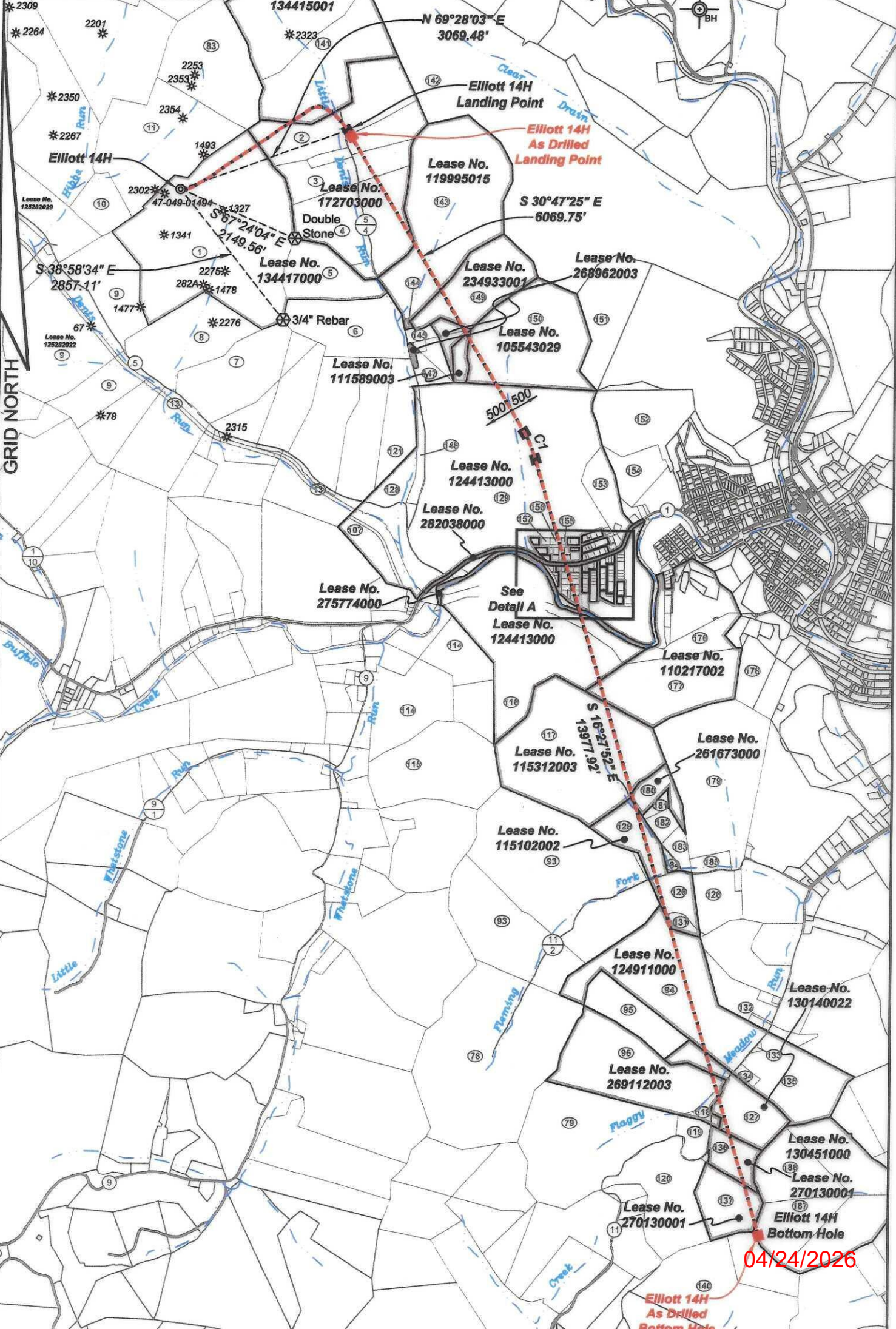
WELL OPERATOR: EQT Production Company DESIGNATED AGENT: Joseph C. Mallow
 ADDRESS: 400 Woodcliff Drive ADDRESS: 427 Midstate Drive
 Canonsburg, PA 15317 Clarksburg, WV 25301

04/24/2026

BH: 3462' LAT: 39-30-00

BH: 1321' LONG: 80-20-00

**Elliott 14H
Elliott
EQT Production Company**



- ⊙ Proposed Gas Well
- ⊙ Located Corner, as noted
- Surface Tract Lines
- - - Reference Line
- ▬ Lease Boundary
- Creek or Drain
- ⑤ WV County Route
- ⑤ WV State Route

CURVE	RADIUS	ARC LENGTH	CHORD LENGTH	CHORD BEARING	DELTA ANGLE
C1	1909.20'	477.36'	476.12'	S 23°37'39" E	14°19'33"

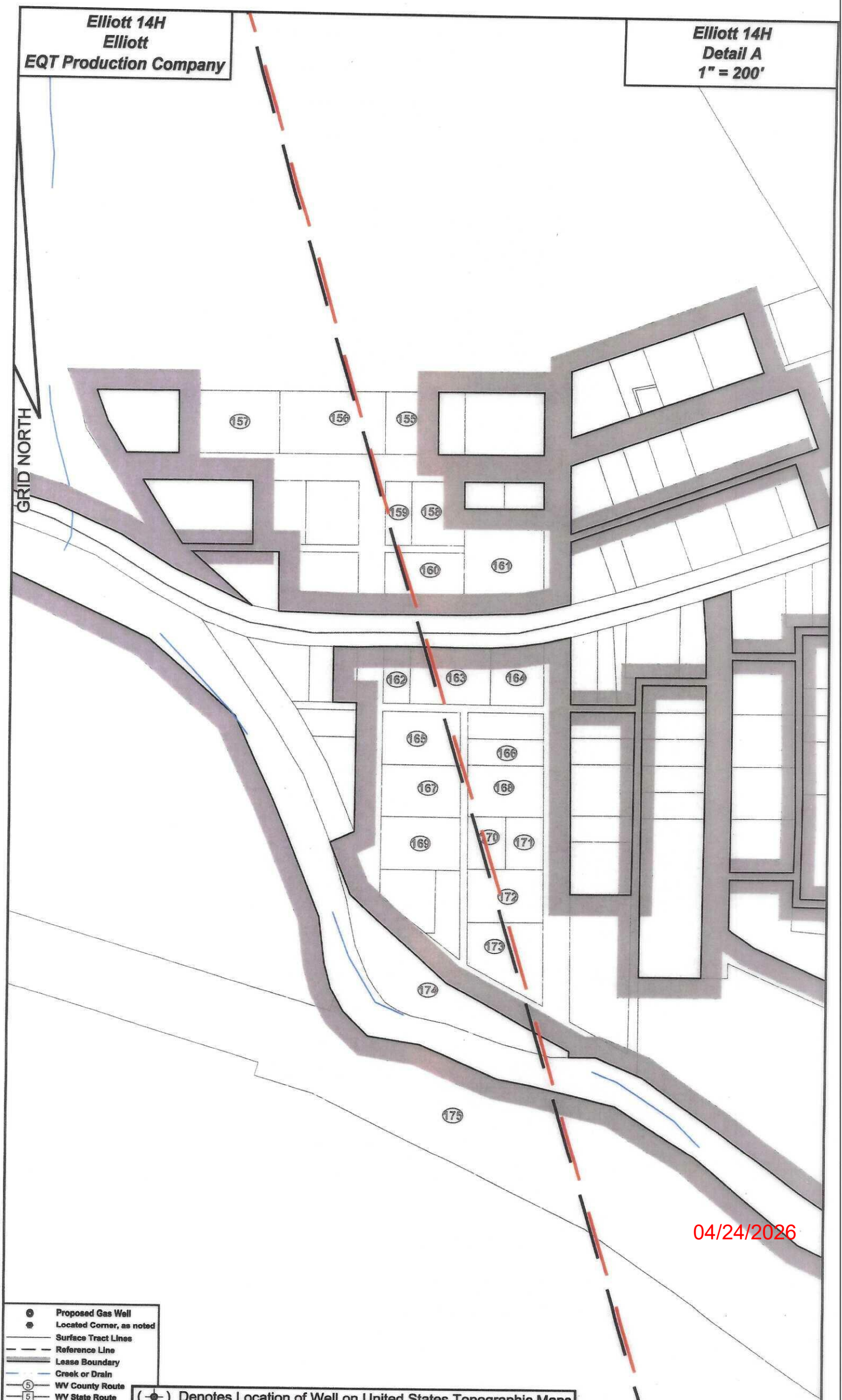
(⊙) Denotes Location of Well on United States Topographic Maps

04/24/2026

Elliott 14H
Elliott
EQT Production Company

Elliott 14H
Detail A
1" = 200'

GRID NORTH



04/24/2026

- ⊙ Proposed Gas Well
- ⊙ Located Corner, as noted
- Surface Tract Lines
- - - Reference Line
- Lease Boundary
- Creek or Drain
- ⑤ WV County Route
- ⑥ WV State Route

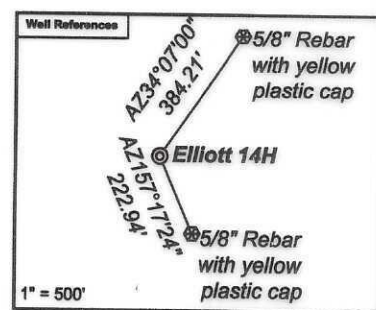
(⊙) Denotes Location of Well on United States Topographic Maps

Elliott 14H
Elliott
EQT Production Company

Tract I.D.	Tax Map No.	Parcel No.	County	District
1	34	40	Marion	Mannington
2	34	49	Marion	Mannington
3	34	47	Marion	Mannington
4	33	1	Marion	Mannington
5	34	40.1	Marion	Mannington
6	34	45	Marion	Mannington
7	34	41	Marion	Mannington
8	34	39	Marion	Mannington
9	34	33	Marion	Mannington
10	34	38	Marion	Mannington
11	34	37	Marion	Mannington
13	34	32	Marion	Mannington
76	68	4	Marion	Mannington
79	68	5	Marion	Mannington
83	34	37	Marion	Mannington
96	68	3	Marion	Mannington
94	68	9	Marion	Mannington
95	68	8	Marion	Mannington
96	68	7.10	Marion	Mannington
107	34	30	Marion	Mannington
114	67	3	Marion	Mannington
115	67	4	Marion	Mannington
116	67	1	Marion	Mannington
117	68	2	Marion	Mannington
118	68	7	Marion	Mannington
119	68	6	Marion	Mannington
120	68	59	Marion	Mannington
121	34	44.1	Marion	Mannington
126	68	22	Marion	Mannington
127	68	56	Marion	Mannington
128	33	10	Marion	Mannington
129	33	9	Marion	Mannington
131	68	10	Marion	Mannington
132	68	11.1	Marion	Mannington
133	69	51	Marion	Mannington
134	69	45.1	Marion	Mannington
135	69	54	Marion	Mannington
136	69	57	Marion	Mannington
137	69	58	Marion	Mannington
140	26	5	Marion	Lincoln
141	32	11	Marion	Mannington
142	33	28	Marion	Mannington
143	33	4	Marion	Mannington
144	33	4.1	Marion	Mannington
145	33	8	Marion	Mannington
147	33	8.2	Marion	Mannington
148	33	9.2	Marion	Mannington
149	33	5	Marion	Mannington
150	33	6	Marion	Mannington
151	33	7	Marion	Mannington
152	33	12.1	Marion	Mannington
153	33	11	Marion	Mannington
154	33	12	Marion	Mannington
155	4	10.2	Marion	Mannington Corp
156	4	93	Marion	Mannington Corp
157	4	92	Marion	Mannington Corp
158	4	11	Marion	Mannington Corp
159	4	11.1	Marion	Mannington Corp
160	4	26	Marion	Mannington Corp
161	4	12	Marion	Mannington Corp
162	4	31	Marion	Mannington Corp
163	4	32	Marion	Mannington Corp
164	4	34	Marion	Mannington Corp
165	4	30	Marion	Mannington Corp
166	4	36	Marion	Mannington Corp
167	4	29	Marion	Mannington Corp
168	4	37	Marion	Mannington Corp
169	4	28	Marion	Mannington Corp
170	4	38	Marion	Mannington Corp
171	4	39	Marion	Mannington Corp
172	4	40	Marion	Mannington Corp
173	4	41	Marion	Mannington Corp
174	67	1	Marion	Mannington
175	67	18	Marion	Mannington
176	5	71	Marion	Mannington Corp
177	68	1	Marion	Mannington
178	68	36	Marion	Mannington
179	68	25	Marion	Mannington
180	68	24	Marion	Mannington
181	68	23.2	Marion	Mannington
182	68	23.2	Marion	Mannington
183	68	23	Marion	Mannington
184	68	24.1	Marion	Mannington
185	68	25.1	Marion	Mannington
186	69	17	Marion	Mannington
187	69	16	Marion	Mannington

Surface Tract Owner	Acres
Marion County Coal Resources Inc.	153.25
Thomas D. & Aimee J. Haught	24.78
Edward F. Price	.84
Thomas D. & Aimee J. Haught	106.823
Delly J. Fluharty	29.75
City of Mannington	42.5
Marion County Coal Resources Inc.	47
Marion County Coal Resources Inc.	42.75
Marion County Coal Resources Inc.	134
Marion County Coal Resources Inc.	17
Marion County Coal Resources Inc.	133.37
CSX Transportation	12.62
Robert C. & Florence J. Masters	139
DTM Appalachia Gathering LLC	84.26
Consolidation Coal Company	NA
Doris J. Brown	120.25
Freeland W. & Crystal A. Miller	87.704
Freeland W. & Crystal A. Miller	24.87
DTM Appalachia Gathering LLC	NA
CSX Transportation	45.25
Jack L. Higgins	64
State Soil Conservation Commission	59
Newton S. Beaty Families Trust	83
Robert F. & Florence J. Masters	106.5
Lance F. Jones	3.095
Arnold Claw	8.75
Robert L. Wildman	43.3
City of Mannington	24.75
James F. & Meredith M. Dixon	45.36
Timothy D. & Virginia L. Dobreff	20
City of Mannington	39.7
Newton S. Beaty Families Trust	270.008
Freeland W. & Crystal A. Miller	3.2
Albert N. & Karen W. Lynch	13.25
Harold E. Deavers	0.76
Indy & Holly Masters	2.17
Jason N. & Brigitte A. Lynch	41.48
Thomas & Charlotte Starsick	13.56
Thomas & Charlotte Starsick	25.81
Janet M. Tennant & Connie Vangilder	88.84
Marion County Coal Resources Inc.	116
Mildred H. Prichard Heirs	379.56
Dennis Run Properties LLC	109.0885
Barbara A. Fluharty	0.4115
Jackson I. Yankee	5.444
Mark D. Snider	16.431
City of Mannington	5.8
Jason L. Yankee	43.5
Phel Goodnight Heirs	85
Mildred H. Prichard Heirs	45
Freeland W. Miller	38.58
Barbara M. Michael	15.5
Leonard Stafford	15.3
Josephine F. Utt	Lots 10-11
Brenda S. Gooch	Lots G-9
Sarah E. Kendall	Lots 3-5
George R. & Gina M. Watson	Lots 41-47
Clark V. Gorby Jr.	Lot 48
Clark V. Gorby Jr.	Lots 56-58
Michael A. Beaty	Lot 91
James Hardesty	Lot 91
Hanna M. & Fred K. Mobley	Lots 84-90
Jennifer C. Beach	Lots 86-87
Arlie D. & Lucille P. Galbert	Lots 105-106
Robert Dixon	Lot 108
Hanna M. & Rebecca A. Mobley	Lots 104-104
Janet L. Wyczkoff	Lots 109-110
Dennis M. & Rebecca A. Mobley	Lots 101-102
Ruth A. Strull	Lots 111-112
Heather J. Hailey	Lots 111-112
Beatie L. Keener	Lots 113-114
Judy D. Hamilton	Lots 115-116
Newton S. Beaty Families Trust	83
CSX Transportation	14.07
Gregory W. & Kayla J. White	14.21
Health & Eric Daniels	36.08
Jay E. & Sharon S. Wilcox	10.80
Koger A. & Autumn D. Huharty	86.81
Kenneth A. & Misty L. Rogers	Lot B
Kenneth A. & Misty L. Rogers	Lot A
Roger A. or Barbara M. Fluharty	5.5
Inseph K. Huharty Jr.	1.644
Donald M. or Nancy J. Tennant	4.39
Paul A. Surlace	27.5
James H. Glover	23.4

As-Drilled Well Information:
Elliott 14H coordinates are
 NAD 27 N: 382,001.45 E: 1,751,239.04
 NAD 83 UTM N: 4,377,501.84 E: 553,105.32
Elliott 14H Landing Point coordinates are
 NAD 27 N: 382,968.52 E: 1,754,188.56
 NAD 83 UTM N: 4,377,811.46 E: 553,999.03
Elliott 14H Bottom Hole coordinates are
 NAD 27 N: 364,022.96 E: 1,761,373.06
 NAD 83 UTM N: 4,377,075.90 E: 556,283.99
 West Virginia Coordinate system of 1927 (North Zone)
 based upon Differential GPS Measurements.
 Plat orientation, corner and well ties are based upon
 the grid north meridian.
 Well location references are based upon the grid north
 meridian.
 UTM coordinates are NAD83, Zone 17, Meters.



- Elliott**
- Elliott 17H 47-049-02506 ©
 - Elliott 15H 47-049-02505 ©
 - Elliott 13H 47-049-02504 ©
 - Elliott 11H 47-049-02503 ©
 - Elliott 9H 47-049-02498 ©
 - Elliott 7H 47-049-02502 ©
 - Elliott 5H 47-049-02501 ©
 - Elliott 3H 47-049-02500 ©
 - Elliott 1H 47-049-02499 ©
 - Elliott 16H 47-049-02560
 - Elliott 14H 47-049-02559
 - Elliott 12H 47-049-02558
 - Elliott 10H 47-049-02557
 - Elliott 8H 47-049-02556
 - Elliott 6H 47-049-02555
 - Elliott 4H 47-049-02554
 - Elliott 2H 47-049-02553

Lease No.	Owner	Acres
134417000	Randy J. Elliott, et al.	183
172703000	EQT Production Company, et al.	90.125 & 63
134415001	Ojeda AD4, LLC, et al.	117
119995015	Lee and Hall Royalties, et al.	109.50
234933001	J&N Management Enterprises, LLC, et al.	43.5
268962003	Newton S. Beaty Families Trust, et al.	11.5
111589003	AMP IV, LP, et al.	4.773
105543029	Margaret J. Smith, et al.	85
124413000	Newton S. Beaty Families Trust	427.153
282038000	West Virginia Department of Transportation, Division of Highways	6.06
275774000	West Virginia Department of Natural Resources	10.9907
110217002	George W. Bowers Charitable Trust, et al.	106
115312003	Ellisabeth Rose Lathrop, et al.	106.5
261673000	Country Roads Minerals, LLC	6.93
115102002	Barbara G. Penfield, et al.	32.036
124911000	Deborah A. Ellis, et al.	120
130140022	Jonathan Ward Griffin, et al.	27.525 of 97.745
269112003	Eric Daniels, et al.	95.02
270130001	Steven Gayle Justice	13.5032 of 244.027
270130001	Steven Gayle Justice	25.810 of 244.027
130451000	Cara Lee Starsick, et al.	243

