

EQT PRODUCTION

Marion County, WV

Elliott Pad

Elliott 16H L-004589 - Slot Elliott 16H SHL

Main

Design: Elliott 16 As Drilled

Survey Report - Geographic

07 July, 2025

RECEIVED
Office of Oil and Gas

JAN 15 2026

WV Department of
Environmental Protection



www.scientificdrilling.com



04/24/2026

Survey Report - Geographic

Company:	EQT PRODUCTION	Local Co-ordinate Reference:	Well Elliott 16H L-004589 - Slot Elliott 16H SHL
Project:	Marion County, WV	TVD Reference:	KB@28 @ 1371.0usft
Site:	Elliott Pad	MD Reference:	KB@28 @ 1371.0usft
Well:	Elliott 16H L-004589	North Reference:	Grid
Wellbore:	Main	Survey Calculation Method:	Minimum Curvature
Design:	Elliott 16 As Drilled	Database:	EQT

Project	Marion County, WV		
Map System:	US State Plane 1927 (Exact solution)	System Datum:	Mean Sea Level
Geo Datum:	NAD 1927 (NADCON CONUS)		
Map Zone:	West Virginia North 4701		

Site	Elliott Pad				
Site Position:		Northing:	381,889.78 usft	Latitude:	39° 32' 42.563 N
From:	Map	Easting:	1,751,187.95 usft	Longitude:	80° 22' 56.331 W
Position Uncertainty:	0.0 usft	Slot Radius:	13-3/16 "	Grid Convergence:	-0.56 °

Well	Elliott 16H L-004589 - Slot Elliott 16H SHL					
Well Position	+N/-S	0.0 usft	Northing:	382,015.26 usft	Latitude:	39° 32' 43.809 N
	+E/-W	0.0 usft	Easting:	1,751,244.88 usft	Longitude:	80° 22' 55.620 W
Position Uncertainty		0.0 usft	Wellhead Elevation:	usft	Ground Level:	1,343.0 usft

Wellbore	Main				
-----------------	------	--	--	--	--

Magnetics	Model Name	Sample Date	Declination (°)	Dip Angle (°)	Field Strength (nT)
	IFR	5/8/2025	-8.96	66.13	51,410.40000000

Design	Elliott 16 As Drilled				
---------------	-----------------------	--	--	--	--

Audit Notes:					
Version:	1.0	Phase:	ACTUAL	Tie On Depth:	0.0

Vertical Section:	Depth From (TVD) (usft)	+N/-S (usft)	+E/-W (usft)	Direction (°)
	0.0	0.0	0.0	148.47

Survey									
---------------	--	--	--	--	--	--	--	--	--

Measured Depth (usft)	Inclination (°)	Azimuth (°)	Vertical Depth (usft)	+N/-S (usft)	+E/-W (usft)	Map Northing (usft)	Map Easting (usft)	Latitude	Longitude
0.0	0.00	0.00	0.0	0.0	0.0	382,015.26	1,751,244.88	39° 32' 43.809 N	80° 22' 55.620 W
115.0	0.13	119.21	115.0	-0.1	0.1	382,015.20	1,751,244.99	39° 32' 43.808 N	80° 22' 55.619 W
215.0	0.18	127.24	215.0	-0.2	0.3	382,015.05	1,751,245.22	39° 32' 43.807 N	80° 22' 55.616 W
315.0	0.19	80.09	315.0	-0.3	0.6	382,014.98	1,751,245.50	39° 32' 43.806 N	80° 22' 55.612 W
415.0	0.28	82.94	415.0	-0.2	1.0	382,015.04	1,751,245.91	39° 32' 43.807 N	80° 22' 55.607 W
515.0	0.25	118.23	515.0	-0.3	1.5	382,014.97	1,751,246.34	39° 32' 43.806 N	80° 22' 55.602 W
615.0	0.07	321.69	615.0	-0.4	1.6	382,014.91	1,751,246.50	39° 32' 43.805 N	80° 22' 55.600 W
715.0	0.07	13.01	715.0	-0.2	1.6	382,015.02	1,751,246.47	39° 32' 43.806 N	80° 22' 55.600 W
815.0	0.14	112.36	815.0	-0.2	1.7	382,015.03	1,751,246.60	39° 32' 43.807 N	80° 22' 55.598 W
911.0	0.19	119.49	911.0	-0.4	2.0	382,014.91	1,751,246.85	39° 32' 43.805 N	80° 22' 55.595 W
1,113.0	0.03	213.28	1,113.0	-0.6	2.2	382,014.70	1,751,247.11	39° 32' 43.803 N	80° 22' 55.592 W
KOP1 at 1113.0 MD_1113.0 TVD									
1,156.0	0.18	16.79	1,156.0	-0.5	2.2	382,014.75	1,751,247.12	39° 32' 43.804 N	80° 22' 55.592 W
1,199.0	0.62	39.65	1,199.0	-0.3	2.4	382,015.00	1,751,247.29	39° 32' 43.806 N	80° 22' 55.589 W
1,242.0	1.41	49.71	1,242.0	0.3	3.0	382,015.52	1,751,247.84	39° 32' 43.812 N	80° 22' 55.582 W
1,286.0	1.96	51.03	1,286.0	1.1	4.0	382,016.34	1,751,248.84	39° 32' 43.820 N	80° 22' 55.570 W
1,329.0	2.82	52.25	1,328.9	2.2	5.4	382,017.45	1,751,250.25	39° 32' 43.831 N	80° 22' 55.552 W
1,372.0	3.64	50.43	1,371.9	3.7	7.3	382,018.97	1,751,252.14	39° 32' 43.846 N	80° 22' 55.528 W
1,416.0	4.28	54.51	1,415.8	5.6	9.7	382,020.81	1,751,254.55	39° 32' 43.864 N	80° 22' 55.497 W

Survey Report - Geographic

Company:	EQT PRODUCTION	Local Co-ordinate Reference:	Well Elliott 16H L-004589 - Slot Elliott 16H SHL
Project:	Marion County, WV	TVD Reference:	KB@28 @ 1371.0usft
Site:	Elliott Pad	MD Reference:	KB@28 @ 1371.0usft
Well:	Elliott 16H L-004589	North Reference:	Grid
Wellbore:	Main	Survey Calculation Method:	Minimum Curvature
Design:	Elliott 16 As Drilled	Database:	EQT

Survey

Measured Depth (usft)	Inclination (°)	Azimuth (°)	Vertical Depth (usft)	+N/-S (usft)	+E/-W (usft)	Map Northing (usft)	Map Easting (usft)	Latitude	Longitude
1,459.0	4.59	57.66	1,458.6	7.4	12.4	382,022.67	1,751,257.31	39° 32' 43.883 N	80° 22' 55.462 W
1,502.0	4.36	61.56	1,501.5	9.1	15.3	382,024.36	1,751,260.20	39° 32' 43.900 N	80° 22' 55.426 W
1,545.0	4.23	67.64	1,544.4	10.5	18.2	382,025.75	1,751,263.11	39° 32' 43.914 N	80° 22' 55.389 W
1,589.0	4.74	69.30	1,588.2	11.7	21.4	382,027.01	1,751,266.31	39° 32' 43.927 N	80° 22' 55.348 W
1,632.0	4.65	74.20	1,631.1	12.8	24.8	382,028.11	1,751,269.65	39° 32' 43.938 N	80° 22' 55.306 W
1,675.0	4.31	73.40	1,674.0	13.8	28.0	382,029.04	1,751,272.87	39° 32' 43.948 N	80° 22' 55.265 W
1,718.0	3.00	75.39	1,716.9	14.5	30.6	382,029.79	1,751,275.51	39° 32' 43.955 N	80° 22' 55.231 W
1,761.0	2.49	86.65	1,759.8	14.9	32.7	382,030.13	1,751,277.53	39° 32' 43.959 N	80° 22' 55.205 W
1,804.0	2.19	92.53	1,802.8	14.9	34.4	382,030.15	1,751,279.28	39° 32' 43.959 N	80° 22' 55.183 W
1,848.0	1.79	108.19	1,846.8	14.6	35.9	382,029.89	1,751,280.78	39° 32' 43.957 N	80° 22' 55.164 W
1,891.0	1.53	121.07	1,889.7	14.1	37.0	382,029.39	1,751,281.91	39° 32' 43.952 N	80° 22' 55.149 W
1,934.0	1.34	140.31	1,932.7	13.4	37.8	382,028.71	1,751,282.72	39° 32' 43.945 N	80° 22' 55.139 W
1,977.0	0.94	178.92	1,975.7	12.7	38.2	382,027.97	1,751,283.05	39° 32' 43.938 N	80° 22' 55.135 W
2,021.0	0.45	212.64	2,019.7	12.2	38.1	382,027.46	1,751,282.96	39° 32' 43.933 N	80° 22' 55.136 W
2,064.0	0.17	308.57	2,062.7	12.1	37.9	382,027.36	1,751,282.82	39° 32' 43.932 N	80° 22' 55.137 W
2,107.0	0.64	351.24	2,105.7	12.4	37.9	382,027.63	1,751,282.73	39° 32' 43.935 N	80° 22' 55.139 W
2,150.0	0.96	358.44	2,148.7	13.0	37.8	382,028.23	1,751,282.69	39° 32' 43.941 N	80° 22' 55.139 W
2,193.0	1.02	14.79	2,191.7	13.7	37.9	382,028.96	1,751,282.78	39° 32' 43.948 N	80° 22' 55.138 W
2,237.0	0.99	39.27	2,235.7	14.4	38.2	382,029.64	1,751,283.12	39° 32' 43.954 N	80° 22' 55.134 W
2,323.0	0.41	106.25	2,321.7	14.9	39.0	382,030.12	1,751,283.88	39° 32' 43.959 N	80° 22' 55.124 W
2,410.0	0.58	177.45	2,408.7	14.3	39.3	382,029.60	1,751,284.20	39° 32' 43.954 N	80° 22' 55.120 W
2,478.0	0.92	170.74	2,476.7	13.5	39.4	382,028.71	1,751,284.30	39° 32' 43.945 N	80° 22' 55.119 W
2,548.0	0.93	168.65	2,546.7	12.3	39.6	382,027.60	1,751,284.51	39° 32' 43.934 N	80° 22' 55.116 W
2,592.0	0.94	163.15	2,590.7	11.6	39.8	382,026.91	1,751,284.68	39° 32' 43.928 N	80° 22' 55.114 W
2,635.0	0.62	110.82	2,633.7	11.2	40.1	382,026.49	1,751,285.00	39° 32' 43.924 N	80° 22' 55.110 W
2,678.0	1.98	69.61	2,676.7	11.4	41.0	382,026.66	1,751,285.91	39° 32' 43.925 N	80° 22' 55.098 W
2,721.0	4.13	54.27	2,719.6	12.6	43.0	382,027.83	1,751,287.87	39° 32' 43.937 N	80° 22' 55.073 W
2,764.0	5.83	52.80	2,762.4	14.8	46.0	382,030.05	1,751,290.86	39° 32' 43.959 N	80° 22' 55.035 W
2,808.0	6.87	51.75	2,806.2	17.8	49.8	382,033.03	1,751,294.71	39° 32' 43.989 N	80° 22' 54.986 W
2,850.0	8.39	55.28	2,847.8	21.1	54.3	382,036.33	1,751,299.20	39° 32' 44.022 N	80° 22' 54.929 W
2,894.0	9.87	59.04	2,891.2	24.8	60.2	382,040.10	1,751,305.08	39° 32' 44.060 N	80° 22' 54.855 W
2,937.0	11.17	60.34	2,933.5	28.8	67.0	382,044.06	1,751,311.86	39° 32' 44.100 N	80° 22' 54.769 W
2,980.0	12.26	62.70	2,975.6	33.0	74.7	382,048.21	1,751,319.53	39° 32' 44.142 N	80° 22' 54.671 W
3,023.0	13.70	61.43	3,017.5	37.5	83.2	382,052.74	1,751,328.06	39° 32' 44.187 N	80° 22' 54.563 W
3,067.0	14.79	62.17	3,060.2	42.6	92.7	382,057.86	1,751,337.60	39° 32' 44.239 N	80° 22' 54.442 W
3,110.0	16.53	61.30	3,101.6	48.1	102.9	382,063.36	1,751,347.82	39° 32' 44.294 N	80° 22' 54.312 W
3,153.0	17.89	59.71	3,142.6	54.4	114.0	382,069.63	1,751,358.89	39° 32' 44.357 N	80° 22' 54.172 W
3,196.0	19.41	57.91	3,183.4	61.5	125.8	382,076.75	1,751,370.65	39° 32' 44.429 N	80° 22' 54.022 W
3,282.0	20.95	56.49	3,264.1	77.6	150.7	382,092.83	1,751,395.58	39° 32' 44.590 N	80° 22' 53.706 W
3,368.0	23.50	56.86	3,343.7	95.4	177.9	382,110.70	1,751,422.76	39° 32' 44.769 N	80° 22' 53.362 W
3,455.0	26.26	57.15	3,422.6	115.4	208.6	382,130.63	1,751,453.46	39° 32' 44.969 N	80° 22' 52.972 W
3,541.0	28.30	56.52	3,499.0	136.9	241.6	382,152.19	1,751,486.45	39° 32' 45.185 N	80° 22' 52.554 W
3,628.0	31.07	55.27	3,574.6	161.1	277.2	382,176.36	1,751,522.11	39° 32' 45.428 N	80° 22' 52.102 W
3,714.0	33.18	55.77	3,647.5	187.0	314.9	382,202.25	1,751,559.81	39° 32' 45.687 N	80° 22' 51.624 W
3,800.0	36.19	55.87	3,718.2	214.5	355.4	382,229.74	1,751,600.29	39° 32' 45.963 N	80° 22' 51.110 W
3,886.0	39.39	56.29	3,786.1	243.9	399.1	382,259.13	1,751,644.02	39° 32' 46.258 N	80° 22' 50.556 W
3,973.0	41.67	58.78	3,852.2	274.2	446.8	382,289.45	1,751,691.72	39° 32' 46.562 N	80° 22' 49.951 W
4,059.0	42.61	57.66	3,916.0	304.6	495.9	382,319.84	1,751,740.77	39° 32' 46.867 N	80° 22' 49.328 W
4,146.0	42.25	58.49	3,980.2	335.6	545.7	382,350.88	1,751,790.58	39° 32' 47.179 N	80° 22' 48.696 W
4,232.0	42.25	58.39	4,043.9	365.9	595.0	382,381.15	1,751,839.85	39° 32' 47.483 N	80° 22' 48.071 W
4,318.0	41.81	57.16	4,107.8	396.6	643.7	382,411.85	1,751,888.56	39° 32' 47.791 N	80° 22' 47.453 W
4,405.0	41.72	57.16	4,172.7	428.0	692.4	382,443.27	1,751,937.25	39° 32' 48.106 N	80° 22' 46.835 W
4,491.0	41.96	58.69	4,236.7	458.5	741.0	382,473.73	1,751,985.86	39° 32' 48.412 N	80° 22' 46.219 W
4,578.0	42.50	58.27	4,301.2	489.0	790.8	382,504.30	1,752,035.70	39° 32' 48.719 N	80° 22' 45.586 W
4,664.0	42.19	57.29	4,364.7	519.9	839.8	382,535.19	1,752,084.71	39° 32' 49.029 N	80° 22' 44.965 W

Survey Report - Geographic

Company:	EQT PRODUCTION	Local Co-ordinate Reference:	Well Elliott 16H L-004589 - Slot Elliott 16H SHL
Project:	Marion County, WV	TVD Reference:	KB@28 @ 1371.0usft
Site:	Elliott Pad	MD Reference:	KB@28 @ 1371.0usft
Well:	Elliott 16H L-004589	North Reference:	Grid
Wellbore:	Main	Survey Calculation Method:	Minimum Curvature
Design:	Elliott 16 As Drilled	Database:	EQT

Survey

Measured Depth (usft)	Inclination (°)	Azimuth (°)	Vertical Depth (usft)	+N/-S (usft)	+E/-W (usft)	Map Northing (usft)	Map Easting (usft)	Latitude	Longitude
4,751.0	41.87	56.87	4,429.3	551.6	888.7	382,566.84	1,752,133.61	39° 32' 49.346 N	80° 22' 44.344 W
4,837.0	41.42	56.28	4,493.6	583.1	936.4	382,598.32	1,752,181.30	39° 32' 49.662 N	80° 22' 43.739 W
4,924.0	40.74	55.77	4,559.2	615.0	983.8	382,630.27	1,752,228.71	39° 32' 49.982 N	80° 22' 43.138 W
5,001.0	40.45	55.68	4,617.7	643.2	1,025.2	382,658.48	1,752,270.12	39° 32' 50.265 N	80° 22' 42.613 W
5,087.0	40.87	56.89	4,682.9	674.3	1,071.8	382,689.58	1,752,316.73	39° 32' 50.577 N	80° 22' 42.022 W
5,174.0	41.33	57.55	4,748.5	705.3	1,119.9	382,720.55	1,752,364.81	39° 32' 50.888 N	80° 22' 41.412 W
5,260.0	41.62	58.92	4,812.9	735.3	1,168.4	382,750.53	1,752,413.24	39° 32' 51.189 N	80° 22' 40.798 W
5,347.0	41.30	59.33	4,878.1	764.8	1,217.8	382,780.09	1,752,462.67	39° 32' 51.486 N	80° 22' 40.170 W
5,433.0	40.88	58.07	4,942.9	794.2	1,266.1	382,809.45	1,752,510.97	39° 32' 51.780 N	80° 22' 39.557 W
5,520.0	41.18	57.11	5,008.5	824.8	1,314.3	382,840.06	1,752,559.18	39° 32' 52.088 N	80° 22' 38.946 W
5,606.0	41.22	58.26	5,073.2	855.1	1,362.2	382,870.34	1,752,607.06	39° 32' 52.392 N	80° 22' 38.338 W
5,692.0	40.74	58.39	5,138.2	884.7	1,410.2	382,899.96	1,752,655.05	39° 32' 52.689 N	80° 22' 37.729 W
5,779.0	39.94	58.50	5,204.5	914.2	1,458.2	382,929.43	1,752,703.04	39° 32' 52.985 N	80° 22' 37.120 W
5,865.0	39.09	59.04	5,270.8	942.5	1,505.0	382,957.80	1,752,749.83	39° 32' 53.270 N	80° 22' 36.527 W
5,951.0	39.91	58.24	5,337.2	971.0	1,551.7	382,986.27	1,752,796.54	39° 32' 53.556 N	80° 22' 35.934 W
6,038.0	39.82	57.49	5,404.0	1,000.7	1,598.9	383,015.93	1,752,843.76	39° 32' 53.853 N	80° 22' 35.335 W
6,124.0	40.47	56.00	5,469.7	1,031.1	1,645.2	383,046.34	1,752,890.12	39° 32' 54.158 N	80° 22' 34.747 W
6,210.0	42.92	56.68	5,533.9	1,062.8	1,692.9	383,078.04	1,752,937.73	39° 32' 54.476 N	80° 22' 34.143 W
6,297.0	43.64	57.83	5,597.3	1,095.0	1,743.0	383,110.29	1,752,987.90	39° 32' 54.800 N	80° 22' 33.506 W
6,383.0	43.68	58.90	5,659.5	1,126.2	1,793.6	383,141.43	1,753,038.45	39° 32' 55.113 N	80° 22' 32.865 W
6,469.0	42.63	58.29	5,722.2	1,156.8	1,843.8	383,172.08	1,753,088.65	39° 32' 55.420 N	80° 22' 32.228 W
6,546.0	41.90	57.46	5,779.2	1,184.4	1,887.6	383,199.62	1,753,132.51	39° 32' 55.697 N	80° 22' 31.672 W
6,632.0	42.15	57.60	5,843.1	1,215.3	1,936.2	383,230.52	1,753,181.09	39° 32' 56.007 N	80° 22' 31.055 W
6,719.0	42.17	57.36	5,907.6	1,246.7	1,985.4	383,261.92	1,753,230.32	39° 32' 56.322 N	80° 22' 30.431 W
6,805.0	41.76	56.34	5,971.5	1,278.1	2,033.6	383,293.36	1,753,278.47	39° 32' 56.637 N	80° 22' 29.820 W
6,891.0	41.14	56.33	6,036.0	1,309.7	2,081.0	383,324.92	1,753,325.85	39° 32' 56.954 N	80° 22' 29.219 W
6,978.0	40.29	56.44	6,101.9	1,341.1	2,128.2	383,356.34	1,753,373.11	39° 32' 57.269 N	80° 22' 28.620 W
7,064.0	39.96	56.82	6,167.7	1,371.6	2,174.5	383,386.82	1,753,419.40	39° 32' 57.574 N	80° 22' 28.032 W
7,150.0	40.13	57.54	6,233.5	1,401.5	2,221.0	383,416.81	1,753,465.90	39° 32' 57.875 N	80° 22' 27.443 W
7,236.0	40.17	56.99	6,299.2	1,431.5	2,267.7	383,446.80	1,753,512.54	39° 32' 58.176 N	80° 22' 26.851 W
7,323.0	40.56	56.34	6,365.5	1,462.5	2,314.7	383,477.76	1,753,559.61	39° 32' 58.487 N	80° 22' 26.254 W
7,409.0	41.12	55.94	6,430.6	1,493.8	2,361.4	383,509.10	1,753,606.31	39° 32' 58.801 N	80° 22' 25.661 W
7,495.0	41.62	56.65	6,495.1	1,525.4	2,408.7	383,540.63	1,753,653.60	39° 32' 59.117 N	80° 22' 25.062 W
7,582.0	41.68	57.22	6,560.1	1,556.9	2,457.2	383,572.18	1,753,702.05	39° 32' 59.434 N	80° 22' 24.447 W
7,668.0	41.16	58.66	6,624.6	1,587.1	2,505.4	383,602.38	1,753,750.27	39° 32' 59.737 N	80° 22' 23.835 W
7,754.0	42.12	58.58	6,688.9	1,616.9	2,554.2	383,632.14	1,753,799.05	39° 33' 0.035 N	80° 22' 23.216 W
7,841.0	42.85	59.54	6,753.1	1,647.1	2,604.6	383,662.34	1,753,849.45	39° 33' 0.339 N	80° 22' 22.577 W
7,927.0	42.22	59.39	6,816.4	1,676.6	2,654.6	383,691.88	1,753,899.53	39° 33' 0.636 N	80° 22' 21.941 W
8,001.0	41.52	57.13	6,871.5	1,702.6	2,696.7	383,717.85	1,753,941.53	39° 33' 0.896 N	80° 22' 21.408 W
KOP2 at 8001.0 MD_6871.5 TVD									
8,096.0	40.84	56.66	6,943.0	1,736.8	2,749.0	383,752.02	1,753,993.93	39° 33' 1.239 N	80° 22' 20.743 W
8,190.0	40.80	57.43	7,014.2	1,770.2	2,800.6	383,785.44	1,754,045.48	39° 33' 1.574 N	80° 22' 20.089 W
8,284.0	40.85	57.74	7,085.3	1,803.1	2,852.5	383,818.38	1,754,097.36	39° 33' 1.905 N	80° 22' 19.431 W
8,378.0	40.50	57.30	7,156.6	1,836.0	2,904.2	383,851.28	1,754,149.04	39° 33' 2.235 N	80° 22' 18.775 W
8,473.0	40.55	57.22	7,228.8	1,869.4	2,956.1	383,884.67	1,754,200.97	39° 33' 2.570 N	80° 22' 18.117 W
8,568.0	40.31	56.99	7,301.1	1,902.9	3,007.8	383,918.13	1,754,252.70	39° 33' 2.906 N	80° 22' 17.460 W
8,663.0	40.60	67.84	7,373.5	1,931.3	3,062.3	383,946.56	1,754,307.16	39° 33' 3.192 N	80° 22' 16.769 W
8,757.0	42.37	80.77	7,444.1	1,948.0	3,122.0	383,963.21	1,754,366.87	39° 33' 3.362 N	80° 22' 16.008 W
8,851.0	45.10	89.00	7,512.0	1,953.6	3,186.6	383,968.88	1,754,431.49	39° 33' 3.424 N	80° 22' 15.184 W
8,946.0	48.59	99.47	7,577.1	1,948.3	3,255.5	383,963.60	1,754,500.39	39° 33' 3.379 N	80° 22' 14.304 W
9,041.0	52.73	107.44	7,637.4	1,931.1	3,326.8	383,946.38	1,754,571.69	39° 33' 3.215 N	80° 22' 13.392 W
9,135.0	58.81	116.30	7,690.3	1,902.0	3,398.7	383,917.29	1,754,643.58	39° 33' 2.935 N	80° 22' 12.470 W
9,230.0	63.83	123.86	7,735.9	1,860.2	3,470.7	383,875.46	1,754,715.54	39° 33' 2.528 N	80° 22' 11.546 W
9,251.3	65.13	125.49	7,745.1	1,849.3	3,486.5	383,864.52	1,754,731.34	39° 33' 2.422 N	80° 22' 11.343 W
Top Of Marcellus at 9251.3 MD_7745.1 TVD									

Survey Report - Geographic

Company:	EQT PRODUCTION	Local Co-ordinate Reference:	Well Elliott 16H L-004589 - Slot Elliott 16H SHL
Project:	Marion County, WV	TVD Reference:	KB@28 @ 1371.0usft
Site:	Elliott Pad	MD Reference:	KB@28 @ 1371.0usft
Well:	Elliott 16H L-004589	North Reference:	Grid
Wellbore:	Main	Survey Calculation Method:	Minimum Curvature
Design:	Elliott 16 As Drilled	Database:	EQT

Survey

Measured Depth (usft)	Inclination (°)	Azimuth (°)	Vertical Depth (usft)	+N/-S (usft)	+E/-W (usft)	Map Northing (usft)	Map Easting (usft)	Latitude	Longitude
9,326.0	69.83	130.96	7,773.7	1,806.6	3,540.6	383,821.82	1,754,785.48	39° 33' 2.005 N	80° 22' 10.647 W
9,420.0	76.12	136.46	7,801.2	1,744.5	3,605.5	383,759.71	1,754,850.33	39° 33' 1.397 N	80° 22' 9.811 W
9,515.0	82.14	142.63	7,819.1	1,673.5	3,665.9	383,688.76	1,754,910.77	39° 33' 0.702 N	80° 22' 9.031 W
9,610.0	88.04	149.07	7,827.3	1,595.2	3,719.0	383,610.49	1,754,963.83	39° 32' 59.933 N	80° 22' 8.344 W
LP at 9610.0 MD_7827.3 TVD									
9,705.0	89.65	148.01	7,829.2	1,514.2	3,768.5	383,529.48	1,755,013.40	39° 32' 59.137 N	80° 22' 7.701 W
9,799.0	90.33	149.31	7,829.2	1,433.9	3,817.4	383,449.19	1,755,062.29	39° 32' 58.348 N	80° 22' 7.067 W
9,894.0	91.67	151.40	7,827.6	1,351.4	3,864.4	383,366.65	1,755,109.27	39° 32' 57.537 N	80° 22' 6.457 W
9,988.0	89.86	149.30	7,826.3	1,269.7	3,910.9	383,284.97	1,755,155.76	39° 32' 56.734 N	80° 22' 5.854 W
10,082.0	90.19	149.06	7,826.3	1,189.0	3,959.0	383,204.25	1,755,203.92	39° 32' 55.941 N	80° 22' 5.229 W
10,177.0	90.97	150.47	7,825.3	1,106.9	4,006.9	383,122.18	1,755,251.76	39° 32' 55.134 N	80° 22' 4.608 W
10,273.0	90.49	149.76	7,824.1	1,023.7	4,054.7	383,038.95	1,755,299.59	39° 32' 54.316 N	80° 22' 3.987 W
10,368.0	91.23	150.94	7,822.7	941.1	4,101.7	382,956.40	1,755,346.58	39° 32' 53.505 N	80° 22' 3.377 W
10,464.0	90.59	149.08	7,821.1	858.0	4,149.7	382,873.27	1,755,394.55	39° 32' 52.688 N	80° 22' 2.754 W
10,560.0	90.09	147.82	7,820.6	776.2	4,199.9	382,791.46	1,755,444.78	39° 32' 51.884 N	80° 22' 2.103 W
10,655.0	90.80	148.57	7,819.8	695.5	4,250.0	382,710.73	1,755,494.85	39° 32' 51.091 N	80° 22' 1.454 W
10,751.0	90.73	148.80	7,818.5	613.5	4,299.9	382,628.72	1,755,544.74	39° 32' 50.285 N	80° 22' 0.807 W
10,847.0	91.06	148.91	7,817.0	531.3	4,349.5	382,546.57	1,755,594.38	39° 32' 49.478 N	80° 22' 0.163 W
10,942.0	91.23	148.74	7,815.1	450.0	4,398.7	382,465.31	1,755,643.55	39° 32' 48.680 N	80° 22' 59.526 W
11,038.0	90.49	147.96	7,813.7	368.3	4,449.0	382,383.59	1,755,693.92	39° 32' 47.877 N	80° 21' 58.872 W
11,133.0	91.40	150.76	7,812.1	286.6	4,497.4	382,301.88	1,755,742.32	39° 32' 47.074 N	80° 21' 58.245 W
11,229.0	90.36	147.77	7,810.7	204.1	4,546.5	382,219.38	1,755,791.37	39° 32' 46.263 N	80° 21' 57.608 W
11,325.0	90.39	147.25	7,810.0	123.1	4,598.1	382,138.41	1,755,842.94	39° 32' 45.468 N	80° 21' 56.940 W
11,421.0	91.07	148.67	7,808.8	41.8	4,649.0	382,057.04	1,755,893.86	39° 32' 44.669 N	80° 21' 56.280 W
11,516.0	91.13	148.10	7,807.0	-39.1	4,698.8	381,976.16	1,755,943.65	39° 32' 43.874 N	80° 21' 55.634 W
11,612.0	91.54	149.93	7,804.7	-121.4	4,748.2	381,893.88	1,755,993.06	39° 32' 43.065 N	80° 21' 54.994 W
11,707.0	91.37	149.16	7,802.3	-203.2	4,796.3	381,812.02	1,756,041.20	39° 32' 42.261 N	80° 21' 54.369 W
11,803.0	90.73	149.86	7,800.6	-286.0	4,845.0	381,729.31	1,756,089.90	39° 32' 41.448 N	80° 21' 53.737 W
11,899.0	91.34	148.39	7,798.8	-368.3	4,894.3	381,646.93	1,756,139.15	39° 32' 40.639 N	80° 21' 53.098 W
11,994.0	91.24	148.79	7,796.7	-449.4	4,943.8	381,565.87	1,756,188.65	39° 32' 39.842 N	80° 21' 52.457 W
12,090.0	91.64	149.65	7,794.3	-531.8	4,992.9	381,483.42	1,756,237.76	39° 32' 39.032 N	80° 21' 51.820 W
12,186.0	90.70	146.95	7,792.3	-613.5	5,043.3	381,401.76	1,756,288.19	39° 32' 38.230 N	80° 21' 51.166 W
12,281.0	91.54	148.10	7,790.5	-693.6	5,094.3	381,321.64	1,756,339.19	39° 32' 37.443 N	80° 21' 50.505 W
12,377.0	91.34	149.58	7,788.1	-775.7	5,144.0	381,239.52	1,756,388.84	39° 32' 36.636 N	80° 21' 49.861 W
12,473.0	91.24	149.68	7,785.9	-858.6	5,192.5	381,156.71	1,756,437.37	39° 32' 35.822 N	80° 21' 49.231 W
12,568.0	90.77	149.34	7,784.2	-940.4	5,240.7	381,074.86	1,756,485.56	39° 32' 35.018 N	80° 21' 48.606 W
12,664.0	91.00	148.77	7,782.7	-1,022.7	5,290.0	380,992.54	1,756,534.92	39° 32' 34.209 N	80° 21' 47.966 W
12,760.0	91.00	149.63	7,781.1	-1,105.2	5,339.2	380,910.09	1,756,584.07	39° 32' 33.398 N	80° 21' 47.329 W
12,855.0	90.73	148.85	7,779.6	-1,186.8	5,387.8	380,828.46	1,756,632.65	39° 32' 32.596 N	80° 21' 46.698 W
12,951.0	91.17	150.45	7,778.0	-1,269.6	5,436.3	380,745.63	1,756,681.15	39° 32' 31.782 N	80° 21' 46.069 W
13,046.0	90.53	150.87	7,776.6	-1,352.4	5,482.8	380,662.83	1,756,727.69	39° 32' 30.968 N	80° 21' 45.465 W
13,142.0	90.33	149.12	7,775.9	-1,435.6	5,530.8	380,579.70	1,756,775.70	39° 32' 30.151 N	80° 21' 44.842 W
13,238.0	89.35	148.34	7,776.2	-1,517.6	5,580.6	380,497.65	1,756,825.53	39° 32' 29.345 N	80° 21' 44.196 W
13,333.0	89.05	145.65	7,777.5	-1,597.3	5,632.4	380,417.99	1,756,877.26	39° 32' 28.563 N	80° 21' 43.526 W
13,429.0	89.55	148.00	7,778.7	-1,677.6	5,684.9	380,337.65	1,756,929.79	39° 32' 27.774 N	80° 21' 42.845 W
13,525.0	89.18	147.30	7,779.7	-1,758.7	5,736.3	380,256.56	1,756,981.15	39° 32' 26.977 N	80° 21' 42.180 W
13,620.0	89.38	150.04	7,780.9	-1,839.8	5,785.7	380,175.43	1,757,030.54	39° 32' 26.180 N	80° 21' 41.540 W
13,716.0	88.68	149.41	7,782.6	-1,922.7	5,834.1	380,092.53	1,757,078.93	39° 32' 25.365 N	80° 21' 40.912 W
13,811.0	88.91	150.19	7,784.6	-2,004.8	5,881.8	380,010.44	1,757,126.71	39° 32' 24.558 N	80° 21' 40.292 W
13,907.0	88.85	149.61	7,786.4	-2,087.9	5,930.0	379,927.41	1,757,174.84	39° 32' 23.742 N	80° 21' 39.667 W
14,003.0	88.51	150.92	7,788.7	-2,171.2	5,977.6	379,844.07	1,757,222.44	39° 32' 22.923 N	80° 21' 39.050 W
14,098.0	87.84	149.51	7,791.7	-2,253.6	6,024.7	379,761.66	1,757,269.61	39° 32' 22.113 N	80° 21' 38.437 W
14,194.0	87.44	149.18	7,795.6	-2,336.1	6,073.6	379,679.15	1,757,318.51	39° 32' 21.302 N	80° 21' 37.803 W
14,290.0	87.74	150.46	7,799.7	-2,419.0	6,121.9	379,596.24	1,757,366.73	39° 32' 20.487 N	80° 21' 37.178 W
14,385.0	88.65	150.73	7,802.7	-2,501.7	6,168.5	379,513.52	1,757,413.35	39° 32' 19.674 N	80° 21' 36.572 W

Survey Report - Geographic

Company:	EQT PRODUCTION	Local Co-ordinate Reference:	Well Elliott 16H L-004589 - Slot Elliott 16H SHL
Project:	Marion County, WV	TVD Reference:	KB@28 @ 1371.0usft
Site:	Elliott Pad	MD Reference:	KB@28 @ 1371.0usft
Well:	Elliott 16H L-004589	North Reference:	Grid
Wellbore:	Main	Survey Calculation Method:	Minimum Curvature
Design:	Elliott 16 As Drilled	Database:	EQT

Survey										
Measured Depth (usft)	Inclination (°)	Azimuth (°)	Vertical Depth (usft)	+N/-S (usft)	+E/-W (usft)	Map Northing (usft)	Map Easting (usft)	Latitude	Longitude	
14,481.0	88.78	151.10	7,804.8	-2,585.6	6,215.1	379,429.65	1,757,460.00	39° 32' 18.850 N	80° 21' 35.967 W	
14,575.0	88.51	151.55	7,807.0	-2,668.1	6,260.2	379,347.20	1,757,505.10	39° 32' 18.039 N	80° 21' 35.381 W	
14,670.0	85.72	147.91	7,811.8	-2,750.0	6,308.0	379,265.27	1,757,552.91	39° 32' 17.234 N	80° 21' 34.761 W	
14,765.0	87.07	150.47	7,817.8	-2,831.4	6,356.6	379,183.85	1,757,601.46	39° 32' 16.434 N	80° 21' 34.131 W	
14,860.0	87.91	151.13	7,822.0	-2,914.3	6,402.9	379,101.00	1,757,647.76	39° 32' 15.619 N	80° 21' 33.530 W	
14,954.0	86.97	148.80	7,826.2	-2,995.5	6,449.9	379,019.71	1,757,694.76	39° 32' 14.820 N	80° 21' 32.920 W	
15,048.0	88.01	149.88	7,830.3	-3,076.3	6,497.8	378,938.93	1,757,742.65	39° 32' 14.026 N	80° 21' 32.299 W	
15,143.0	86.94	149.30	7,834.5	-3,158.2	6,545.8	378,857.08	1,757,790.69	39° 32' 13.222 N	80° 21' 31.676 W	
15,238.0	88.38	150.02	7,838.3	-3,240.1	6,593.8	378,775.17	1,757,838.63	39° 32' 12.417 N	80° 21' 31.054 W	
15,334.0	88.25	149.42	7,841.2	-3,323.0	6,642.1	378,692.30	1,757,887.02	39° 32' 11.602 N	80° 21' 30.426 W	
15,429.0	88.21	149.64	7,844.1	-3,404.8	6,690.3	378,610.46	1,757,935.17	39° 32' 10.798 N	80° 21' 29.802 W	
15,524.0	87.91	150.01	7,847.3	-3,486.9	6,738.0	378,528.38	1,757,982.89	39° 32' 9.991 N	80° 21' 29.183 W	
15,620.0	88.41	151.20	7,850.4	-3,570.5	6,785.1	378,444.78	1,758,029.99	39° 32' 9.170 N	80° 21' 28.571 W	
15,715.0	87.74	149.06	7,853.6	-3,652.8	6,832.4	378,362.46	1,758,077.27	39° 32' 8.360 N	80° 21' 27.958 W	
15,810.0	87.68	149.70	7,857.4	-3,734.5	6,880.7	378,280.77	1,758,125.62	39° 32' 7.558 N	80° 21' 27.331 W	
15,905.0	88.68	152.58	7,860.4	-3,817.6	6,926.6	378,197.62	1,758,171.44	39° 32' 6.740 N	80° 21' 26.736 W	
16,000.0	89.15	154.33	7,862.2	-3,902.6	6,969.0	378,112.65	1,758,213.89	39° 32' 5.904 N	80° 21' 26.184 W	
16,095.0	89.56	154.60	7,863.3	-3,988.3	7,010.0	378,026.94	1,758,254.84	39° 32' 5.061 N	80° 21' 25.651 W	
16,190.0	89.25	158.45	7,864.3	-4,075.4	7,047.8	377,939.82	1,758,292.67	39° 32' 4.204 N	80° 21' 25.157 W	
16,285.0	89.22	161.62	7,865.5	-4,164.7	7,080.2	377,850.55	1,758,325.10	39° 32' 3.324 N	80° 21' 24.732 W	
16,379.0	89.29	163.23	7,866.7	-4,254.3	7,108.6	377,760.95	1,758,353.48	39° 32' 2.441 N	80° 21' 24.359 W	
16,473.0	88.95	164.29	7,868.2	-4,344.6	7,134.9	377,670.71	1,758,379.77	39° 32' 1.552 N	80° 21' 24.013 W	
16,568.0	89.12	163.03	7,869.8	-4,435.7	7,161.6	377,579.56	1,758,406.49	39° 32' 0.654 N	80° 21' 23.661 W	
16,663.0	87.88	163.30	7,872.3	-4,526.6	7,189.1	377,488.67	1,758,433.99	39° 31' 59.758 N	80° 21' 23.298 W	
16,758.0	90.77	166.82	7,873.4	-4,618.4	7,213.6	377,396.91	1,758,458.48	39° 31' 58.853 N	80° 21' 22.975 W	
16,852.0	88.48	163.08	7,874.0	-4,709.1	7,238.0	377,306.16	1,758,482.88	39° 31' 57.959 N	80° 21' 22.652 W	
16,947.0	89.52	162.13	7,875.7	-4,799.7	7,266.4	377,215.52	1,758,511.27	39° 31' 57.066 N	80° 21' 22.279 W	
17,042.0	89.73	164.89	7,876.3	-4,890.8	7,293.4	377,124.44	1,758,538.24	39° 31' 56.168 N	80° 21' 21.924 W	
17,136.0	90.53	163.64	7,876.1	-4,981.3	7,318.8	377,033.96	1,758,563.73	39° 31' 55.276 N	80° 21' 21.587 W	
17,230.0	88.65	159.31	7,876.7	-5,070.4	7,348.7	376,944.86	1,758,593.58	39° 31' 54.398 N	80° 21' 21.195 W	
17,325.0	90.83	163.97	7,877.2	-5,160.5	7,378.6	376,854.73	1,758,623.50	39° 31' 53.510 N	80° 21' 20.803 W	
17,328.0	90.82	163.94	7,877.1	-5,163.4	7,379.4	376,851.84	1,758,624.33	39° 31' 53.482 N	80° 21' 20.792 W	
Deepest Point Of Well at 17328 MD_7877.1 TVD										
17,419.0	90.57	162.99	7,876.0	-5,250.6	7,405.3	376,764.61	1,758,650.22	39° 31' 52.622 N	80° 21' 20.451 W	
17,513.0	90.03	163.84	7,875.5	-5,340.7	7,432.2	376,674.53	1,758,677.05	39° 31' 51.734 N	80° 21' 20.097 W	
17,607.0	89.83	163.23	7,875.7	-5,430.9	7,458.8	376,584.38	1,758,703.70	39° 31' 50.846 N	80° 21' 19.746 W	
17,702.0	90.83	163.48	7,875.1	-5,521.9	7,486.0	376,493.37	1,758,730.91	39° 31' 49.949 N	80° 21' 19.388 W	
17,796.0	90.36	164.13	7,874.1	-5,612.2	7,512.2	376,403.10	1,758,757.12	39° 31' 49.059 N	80° 21' 19.042 W	
17,891.0	90.90	164.33	7,873.1	-5,703.6	7,538.1	376,311.68	1,758,782.94	39° 31' 48.158 N	80° 21' 18.702 W	
17,985.0	90.63	162.95	7,871.8	-5,793.8	7,564.5	376,221.50	1,758,809.41	39° 31' 47.269 N	80° 21' 18.353 W	
18,080.0	89.12	161.01	7,872.0	-5,884.1	7,593.9	376,131.17	1,758,838.80	39° 31' 46.379 N	80° 21' 17.967 W	
18,176.0	90.80	164.78	7,872.1	-5,975.8	7,622.2	376,039.43	1,758,867.03	39° 31' 45.475 N	80° 21' 17.596 W	
18,271.0	90.60	162.78	7,870.9	-6,067.0	7,648.7	375,948.22	1,758,893.56	39° 31' 44.576 N	80° 21' 17.246 W	
18,367.0	89.83	162.35	7,870.6	-6,158.6	7,677.4	375,856.64	1,758,922.32	39° 31' 43.674 N	80° 21' 16.868 W	
18,463.0	91.64	163.77	7,869.4	-6,250.4	7,705.4	375,764.82	1,758,950.29	39° 31' 42.769 N	80° 21' 16.500 W	
18,558.0	91.61	164.72	7,866.7	-6,341.8	7,731.2	375,673.42	1,758,976.08	39° 31' 41.868 N	80° 21' 16.159 W	
18,653.0	89.96	162.24	7,865.4	-6,432.9	7,758.2	375,582.36	1,759,003.08	39° 31' 40.971 N	80° 21' 15.804 W	
18,748.0	92.14	163.48	7,863.6	-6,523.7	7,786.2	375,491.61	1,759,031.08	39° 31' 40.076 N	80° 21' 15.435 W	
18,843.0	91.91	164.46	7,860.3	-6,614.9	7,812.4	375,400.36	1,759,057.29	39° 31' 39.177 N	80° 21' 15.090 W	
18,937.0	90.67	162.64	7,858.1	-6,705.0	7,839.0	375,310.23	1,759,083.90	39° 31' 38.289 N	80° 21' 14.739 W	
19,032.0	91.61	164.56	7,856.3	-6,796.1	7,865.8	375,219.12	1,759,110.72	39° 31' 37.391 N	80° 21' 14.386 W	
19,127.0	90.70	164.11	7,854.3	-6,887.6	7,891.5	375,127.67	1,759,136.36	39° 31' 36.489 N	80° 21' 14.048 W	
19,222.0	91.64	163.15	7,852.4	-6,978.7	7,918.3	375,036.54	1,759,163.13	39° 31' 35.591 N	80° 21' 13.695 W	
19,317.0	92.18	162.49	7,849.2	-7,069.4	7,946.3	374,945.83	1,759,191.18	39° 31' 34.697 N	80° 21' 13.326 W	
19,412.0	91.94	162.26	7,845.8	-7,159.9	7,975.0	374,855.35	1,759,219.92	39° 31' 33.806 N	80° 21' 12.948 W	

Survey Report - Geographic

Company:	EQT PRODUCTION	Local Co-ordinate Reference:	Well Elliott 16H L-004589 - Slot Elliott 16H SHL
Project:	Marion County, WV	TVD Reference:	KB@28 @ 1371.0usft
Site:	Elliott Pad	MD Reference:	KB@28 @ 1371.0usft
Well:	Elliott 16H L-004589	North Reference:	Grid
Wellbore:	Main	Survey Calculation Method:	Minimum Curvature
Design:	Elliott 16 As Drilled	Database:	EQT

Survey									
Measured Depth (usft)	Inclination (°)	Azimuth (°)	Vertical Depth (usft)	+N/-S (usft)	+E/-W (usft)	Map Northing (usft)	Map Easting (usft)	Latitude	Longitude
19,506.0	92.31	163.54	7,842.3	-7,249.7	8,002.7	374,765.57	1,759,247.54	39° 31' 32.921 N	80° 21' 12.585 W
19,601.0	92.45	164.27	7,838.4	-7,340.9	8,029.0	374,674.37	1,759,273.86	39° 31' 32.022 N	80° 21' 12.238 W
19,696.0	91.30	163.24	7,835.3	-7,432.0	8,055.5	374,583.22	1,759,300.42	39° 31' 31.124 N	80° 21' 11.888 W
19,790.0	92.85	163.64	7,831.9	-7,522.1	8,082.3	374,493.18	1,759,327.19	39° 31' 30.236 N	80° 21' 11.535 W
19,885.0	92.01	162.97	7,827.8	-7,613.0	8,109.6	374,402.27	1,759,354.46	39° 31' 29.340 N	80° 21' 11.176 W
19,979.0	93.32	164.96	7,823.5	-7,703.2	8,135.5	374,312.03	1,759,380.39	39° 31' 28.451 N	80° 21' 10.835 W
20,073.0	93.18	165.00	7,818.1	-7,793.9	8,159.8	374,221.39	1,759,404.72	39° 31' 27.557 N	80° 21' 10.513 W
20,168.0	91.71	162.19	7,814.1	-7,884.9	8,186.6	374,130.35	1,759,431.52	39° 31' 26.660 N	80° 21' 10.160 W
20,262.0	92.82	163.87	7,810.4	-7,974.7	8,214.1	374,040.52	1,759,458.93	39° 31' 25.775 N	80° 21' 9.799 W
20,357.0	92.31	162.17	7,806.1	-8,065.5	8,241.8	373,949.75	1,759,486.65	39° 31' 24.880 N	80° 21' 9.435 W
20,452.0	92.55	164.80	7,802.1	-8,156.5	8,268.7	373,858.76	1,759,513.63	39° 31' 23.983 N	80° 21' 9.079 W
20,547.0	93.02	164.74	7,797.5	-8,248.1	8,293.7	373,767.21	1,759,538.55	39° 31' 23.081 N	80° 21' 8.750 W
20,642.0	92.58	164.06	7,792.8	-8,339.4	8,319.2	373,675.82	1,759,564.07	39° 31' 22.180 N	80° 21' 8.414 W
20,737.0	91.78	164.22	7,789.2	-8,430.8	8,345.1	373,584.50	1,759,590.01	39° 31' 21.280 N	80° 21' 8.071 W
20,832.0	91.10	163.41	7,786.8	-8,522.0	8,371.6	373,493.29	1,759,616.49	39° 31' 20.381 N	80° 21' 7.723 W
20,927.0	91.00	163.72	7,785.1	-8,613.1	8,398.5	373,402.19	1,759,643.36	39° 31' 19.483 N	80° 21' 7.369 W
21,022.0	91.54	164.58	7,783.0	-8,704.4	8,424.4	373,310.83	1,759,669.30	39° 31' 18.583 N	80° 21' 7.027 W
21,117.0	91.27	164.23	7,780.7	-8,795.9	8,450.0	373,219.35	1,759,694.83	39° 31' 17.681 N	80° 21' 6.690 W
21,211.0	91.07	163.78	7,778.7	-8,886.3	8,475.8	373,129.01	1,759,720.73	39° 31' 16.790 N	80° 21' 6.348 W
21,307.0	91.54	160.72	7,776.6	-8,977.6	8,505.1	373,037.62	1,759,749.98	39° 31' 15.890 N	80° 21' 5.964 W
21,401.0	91.64	161.36	7,773.9	-9,066.5	8,535.6	372,948.75	1,759,780.51	39° 31' 15.014 N	80° 21' 5.564 W
21,496.0	91.91	163.17	7,771.0	-9,156.9	8,564.6	372,858.31	1,759,809.44	39° 31' 14.123 N	80° 21' 5.184 W
21,591.0	92.04	164.05	7,767.7	-9,248.0	8,591.3	372,767.23	1,759,836.23	39° 31' 13.226 N	80° 21' 4.831 W
21,686.0	92.08	163.89	7,764.3	-9,339.3	8,617.6	372,675.98	1,759,862.44	39° 31' 12.326 N	80° 21' 4.485 W
21,781.0	91.71	163.91	7,761.2	-9,430.5	8,643.9	372,584.76	1,759,888.77	39° 31' 11.427 N	80° 21' 4.138 W
21,875.0	91.91	164.71	7,758.2	-9,521.0	8,669.3	372,494.31	1,759,914.18	39° 31' 10.535 N	80° 21' 3.803 W
21,970.0	91.78	164.42	7,755.1	-9,612.5	8,694.6	372,402.78	1,759,939.45	39° 31' 9.633 N	80° 21' 3.469 W
22,065.0	91.67	162.89	7,752.3	-9,703.6	8,721.3	372,311.66	1,759,966.17	39° 31' 8.735 N	80° 21' 3.117 W
22,160.0	91.88	164.16	7,749.3	-9,794.7	8,748.2	372,220.61	1,759,993.10	39° 31' 7.838 N	80° 21' 2.763 W
22,254.0	91.64	164.00	7,746.5	-9,885.0	8,774.0	372,130.26	1,760,018.87	39° 31' 6.947 N	80° 21' 2.423 W
22,349.0	91.64	164.34	7,743.7	-9,976.4	8,799.9	372,038.90	1,760,044.78	39° 31' 6.047 N	80° 21' 2.081 W
22,444.0	91.37	163.15	7,741.2	-10,067.5	8,826.5	371,947.73	1,760,071.36	39° 31' 5.148 N	80° 21' 1.731 W
22,538.0	91.77	163.42	7,738.7	-10,157.5	8,853.5	371,857.73	1,760,098.38	39° 31' 4.261 N	80° 21' 1.375 W
22,632.0	91.47	162.55	7,736.0	-10,247.4	8,881.0	371,767.89	1,760,125.88	39° 31' 3.376 N	80° 21' 1.014 W
22,727.0	91.64	163.62	7,733.4	-10,338.2	8,908.6	371,677.03	1,760,153.51	39° 31' 2.480 N	80° 21' 0.650 W
22,822.0	91.71	163.87	7,730.7	-10,429.4	8,935.2	371,585.87	1,760,180.09	39° 31' 1.582 N	80° 21' 0.300 W
22,916.0	91.27	164.10	7,728.2	-10,519.7	8,961.1	371,495.55	1,760,206.01	39° 31' 0.692 N	80° 20' 59.958 W
23,010.0	91.51	163.83	7,725.9	-10,610.0	8,987.1	371,405.23	1,760,231.97	39° 30' 59.801 N	80° 20' 59.616 W
23,106.0	91.54	163.12	7,723.4	-10,702.0	9,014.4	371,313.23	1,760,259.27	39° 30' 58.895 N	80° 20' 59.257 W
23,200.0	91.00	163.66	7,721.3	-10,792.1	9,041.3	371,223.17	1,760,286.13	39° 30' 58.007 N	80° 20' 58.903 W
23,294.0	91.34	163.44	7,719.4	-10,882.2	9,067.9	371,133.04	1,760,312.74	39° 30' 57.119 N	80° 20' 58.553 W
23,388.0	90.90	163.16	7,717.5	-10,972.2	9,094.9	371,043.02	1,760,339.75	39° 30' 56.232 N	80° 20' 58.197 W
23,483.0	90.73	163.04	7,716.2	-11,063.1	9,122.5	370,952.13	1,760,367.36	39° 30' 55.336 N	80° 20' 57.834 W
23,577.0	91.37	164.01	7,714.5	-11,153.3	9,149.1	370,862.01	1,760,394.02	39° 30' 54.448 N	80° 20' 57.483 W
23,672.0	90.87	163.17	7,712.6	-11,244.4	9,176.0	370,770.90	1,760,420.85	39° 30' 53.550 N	80° 20' 57.130 W
23,767.0	90.97	163.25	7,711.1	-11,335.3	9,203.4	370,679.96	1,760,448.29	39° 30' 52.653 N	80° 20' 56.769 W
23,861.0	91.78	163.03	7,708.8	-11,425.2	9,230.7	370,590.03	1,760,475.54	39° 30' 51.767 N	80° 20' 56.410 W
23,956.0	91.37	163.79	7,706.2	-11,516.2	9,257.8	370,499.02	1,760,502.66	39° 30' 50.870 N	80° 20' 56.053 W
24,051.0	91.51	162.12	7,703.8	-11,607.0	9,285.6	370,408.22	1,760,530.50	39° 30' 49.975 N	80° 20' 55.687 W
24,146.0	91.68	162.67	7,701.2	-11,697.6	9,313.3	370,317.71	1,760,559.22	39° 30' 49.083 N	80° 20' 55.309 W
24,240.0	91.61	163.94	7,698.5	-11,787.6	9,341.3	370,227.71	1,760,586.21	39° 30' 48.196 N	80° 20' 54.954 W
24,334.0	90.97	164.32	7,696.4	-11,877.9	9,367.0	370,137.31	1,760,611.91	39° 30' 47.305 N	80° 20' 54.615 W
24,429.0	91.14	162.96	7,694.6	-11,969.1	9,393.8	370,046.18	1,760,638.66	39° 30' 46.407 N	80° 20' 54.263 W
24,523.0	90.94	162.69	7,692.9	-12,058.9	9,421.5	369,956.38	1,760,666.41	39° 30' 45.522 N	80° 20' 53.898 W
24,618.0	90.80	163.04	7,691.5	-12,149.6	9,449.5	369,865.61	1,760,694.40	39° 30' 44.628 N	80° 20' 53.530 W

Survey Report - Geographic

Company:	EQT PRODUCTION	Local Co-ordinate Reference:	Well Elliott 16H L-004589 - Slot Elliott 16H SHL
Project:	Marion County, WV	TVD Reference:	KB@28 @ 1371.0usft
Site:	Elliott Pad	MD Reference:	KB@28 @ 1371.0usft
Well:	Elliott 16H L-004589	North Reference:	Grid
Wellbore:	Main	Survey Calculation Method:	Minimum Curvature
Design:	Elliott 16 As Drilled	Database:	EQT

Survey

Measured Depth (usft)	Inclination (°)	Azimuth (°)	Vertical Depth (usft)	+N/-S (usft)	+E/-W (usft)	Map Northing (usft)	Map Easting (usft)	Latitude	Longitude
24,712.0	91.27	164.85	7,689.8	-12,240.0	9,475.5	369,775.30	1,760,720.39	39° 30' 43.738 N	80° 20' 53.188 W
24,806.0	90.60	163.41	7,688.2	-12,330.4	9,501.2	369,684.90	1,760,746.09	39° 30' 42.846 N	80° 20' 52.849 W
24,901.0	90.70	163.72	7,687.2	-12,421.5	9,528.1	369,593.78	1,760,772.97	39° 30' 41.948 N	80° 20' 52.495 W
24,996.0	90.43	163.26	7,686.2	-12,512.6	9,555.1	369,502.70	1,760,799.96	39° 30' 41.051 N	80° 20' 52.140 W
25,090.0	90.77	165.45	7,685.2	-12,603.1	9,580.4	369,412.20	1,760,825.31	39° 30' 40.159 N	80° 20' 51.805 W
25,184.0	90.77	164.29	7,684.0	-12,693.8	9,605.0	369,321.47	1,760,849.84	39° 30' 39.264 N	80° 20' 51.481 W
25,279.0	90.53	164.50	7,682.9	-12,785.3	9,630.5	369,229.97	1,760,875.40	39° 30' 38.362 N	80° 20' 51.144 W
25,373.0	90.97	164.28	7,681.7	-12,875.8	9,655.8	369,139.45	1,760,900.69	39° 30' 37.470 N	80° 20' 50.811 W
25,467.0	90.94	163.70	7,680.1	-12,966.2	9,681.7	369,049.11	1,760,926.61	39° 30' 36.579 N	80° 20' 50.469 W
25,562.0	90.20	164.57	7,679.2	-13,057.5	9,707.7	368,957.73	1,760,952.58	39° 30' 35.679 N	80° 20' 50.127 W
25,656.0	90.83	163.23	7,678.3	-13,147.8	9,733.8	368,867.43	1,760,978.65	39° 30' 34.789 N	80° 20' 49.783 W
25,751.0	90.60	162.68	7,677.1	-13,238.7	9,761.6	368,776.61	1,761,006.49	39° 30' 33.894 N	80° 20' 49.417 W
25,845.0	91.41	163.15	7,675.5	-13,328.5	9,789.2	368,686.77	1,761,034.10	39° 30' 33.008 N	80° 20' 49.054 W
25,939.0	91.91	162.67	7,672.8	-13,418.3	9,816.8	368,596.96	1,761,061.71	39° 30' 32.123 N	80° 20' 48.691 W
26,034.0	91.67	162.40	7,669.8	-13,508.9	9,845.3	368,506.38	1,761,090.21	39° 30' 31.231 N	80° 20' 48.316 W
26,128.0	91.27	163.62	7,667.4	-13,598.7	9,872.8	368,416.52	1,761,117.67	39° 30' 30.345 N	80° 20' 47.955 W
26,222.0	90.43	161.75	7,666.0	-13,688.5	9,900.8	368,326.79	1,761,145.64	39° 30' 29.461 N	80° 20' 47.588 W
26,316.0	90.53	164.61	7,665.2	-13,778.4	9,928.0	368,236.82	1,761,172.84	39° 30' 28.574 N	80° 20' 47.230 W
26,410.0	90.77	163.34	7,664.1	-13,868.8	9,953.9	368,146.48	1,761,198.78	39° 30' 27.684 N	80° 20' 46.888 W
26,504.0	90.63	163.20	7,663.0	-13,958.8	9,981.0	368,056.47	1,761,225.84	39° 30' 26.797 N	80° 20' 46.532 W
26,599.0	90.53	164.24	7,662.0	-14,050.0	10,007.6	367,965.28	1,761,252.47	39° 30' 25.898 N	80° 20' 46.181 W
26,693.0	90.36	163.29	7,661.3	-14,140.2	10,033.9	367,875.04	1,761,278.75	39° 30' 25.008 N	80° 20' 45.835 W
26,788.0	90.83	162.96	7,660.3	-14,231.1	10,061.4	367,784.13	1,761,306.33	39° 30' 24.112 N	80° 20' 45.472 W
26,882.0	90.60	164.00	7,659.1	-14,321.2	10,088.2	367,694.02	1,761,333.05	39° 30' 23.224 N	80° 20' 45.121 W
26,976.0	90.43	163.71	7,658.3	-14,411.5	10,114.3	367,603.73	1,761,359.19	39° 30' 22.334 N	80° 20' 44.776 W
27,070.0	90.60	162.69	7,657.4	-14,501.5	10,141.5	367,513.75	1,761,386.36	39° 30' 21.448 N	80° 20' 44.419 W
27,165.0	90.26	163.69	7,656.7	-14,592.4	10,169.0	367,422.81	1,761,413.83	39° 30' 20.551 N	80° 20' 44.057 W
27,259.0	90.33	163.81	7,656.2	-14,682.7	10,195.3	367,332.57	1,761,440.13	39° 30' 19.662 N	80° 20' 43.711 W
27,354.0	90.40	163.09	7,655.6	-14,773.8	10,222.3	367,241.51	1,761,467.19	39° 30' 18.764 N	80° 20' 43.355 W
27,448.0	90.40	164.58	7,655.0	-14,864.0	10,248.5	367,151.23	1,761,493.36	39° 30' 17.875 N	80° 20' 43.010 W
27,543.0	90.40	163.92	7,654.3	-14,955.5	10,274.3	367,059.80	1,761,519.15	39° 30' 16.973 N	80° 20' 42.670 W
27,637.0	90.26	163.93	7,653.8	-15,045.8	10,300.3	366,969.47	1,761,545.18	39° 30' 16.083 N	80° 20' 42.327 W
27,732.0	90.43	165.02	7,653.2	-15,137.3	10,325.7	366,877.94	1,761,570.60	39° 30' 15.181 N	80° 20' 41.992 W
27,826.0	89.89	163.17	7,652.9	-15,227.7	10,351.5	366,787.55	1,761,596.36	39° 30' 14.290 N	80° 20' 41.652 W
27,921.0	90.10	162.84	7,652.9	-15,318.6	10,379.3	366,696.70	1,761,624.13	39° 30' 13.394 N	80° 20' 41.287 W
28,015.0	90.13	163.89	7,652.8	-15,408.6	10,406.2	366,606.63	1,761,651.04	39° 30' 12.507 N	80° 20' 40.933 W
28,110.0	90.30	163.43	7,652.4	-15,499.8	10,432.9	366,515.47	1,761,677.77	39° 30' 11.608 N	80° 20' 40.581 W
28,204.0	90.36	164.01	7,651.9	-15,590.0	10,459.2	366,425.24	1,761,704.12	39° 30' 10.719 N	80° 20' 40.234 W
28,299.0	90.57	163.50	7,651.1	-15,681.2	10,485.8	366,334.04	1,761,730.69	39° 30' 9.820 N	80° 20' 39.884 W
28,393.0	90.83	163.97	7,649.9	-15,771.5	10,512.1	366,243.81	1,761,757.02	39° 30' 8.931 N	80° 20' 39.538 W
28,487.0	90.70	164.07	7,648.7	-15,861.8	10,538.0	366,153.45	1,761,782.89	39° 30' 8.040 N	80° 20' 39.197 W
28,582.0	90.46	163.57	7,647.7	-15,953.0	10,564.5	366,062.21	1,761,809.36	39° 30' 7.141 N	80° 20' 38.848 W
28,676.0	90.80	163.08	7,646.7	-16,043.1	10,591.5	365,972.17	1,761,836.33	39° 30' 6.253 N	80° 20' 38.493 W
28,771.0	90.77	162.01	7,645.4	-16,133.7	10,619.9	365,881.56	1,761,864.83	39° 30' 5.360 N	80° 20' 38.119 W
28,866.0	90.77	163.37	7,644.1	-16,224.4	10,648.2	365,790.87	1,761,893.09	39° 30' 4.467 N	80° 20' 37.747 W
28,960.0	90.57	163.31	7,643.0	-16,314.4	10,675.2	365,700.82	1,761,920.04	39° 30' 3.579 N	80° 20' 37.393 W
29,055.0	90.70	163.16	7,642.0	-16,405.4	10,702.6	365,609.87	1,761,947.44	39° 30' 2.683 N	80° 20' 37.032 W
29,149.0	90.20	163.93	7,641.2	-16,495.5	10,729.2	365,519.72	1,761,974.06	39° 30' 1.794 N	80° 20' 36.682 W
29,244.0	90.43	163.58	7,640.7	-16,586.7	10,755.8	365,428.51	1,762,000.64	39° 30' 0.895 N	80° 20' 36.332 W
29,338.0	90.16	163.94	7,640.2	-16,677.0	10,782.0	365,338.27	1,762,026.93	39° 30' 0.006 N	80° 20' 35.986 W
29,433.0	90.43	163.84	7,639.7	-16,768.3	10,808.4	365,247.00	1,762,053.29	39° 29' 59.106 N	80° 20' 35.639 W
29,527.0	90.30	164.25	7,639.1	-16,858.6	10,834.2	365,156.62	1,762,079.13	39° 29' 58.215 N	80° 20' 35.298 W
29,622.0	90.70	162.77	7,638.3	-16,949.7	10,861.2	365,065.54	1,762,106.09	39° 29' 57.318 N	80° 20' 34.943 W
29,717.0	90.70	163.23	7,637.1	-17,040.6	10,889.0	364,974.69	1,762,133.86	39° 29' 56.422 N	80° 20' 34.578 W
29,811.0	90.70	164.25	7,636.0	-17,130.8	10,915.3	364,884.46	1,762,160.18	39° 29' 55.533 N	80° 20' 34.232 W

Survey Report - Geographic

Company:	EQT PRODUCTION	Local Co-ordinate Reference:	Well Elliott 16H L-004589 - Slot Elliott 16H SHL
Project:	Marion County, WV	TVD Reference:	KB@28 @ 1371.0usft
Site:	Elliott Pad	MD Reference:	KB@28 @ 1371.0usft
Well:	Elliott 16H L-004589	North Reference:	Grid
Wellbore:	Main	Survey Calculation Method:	Minimum Curvature
Design:	Elliott 16 As Drilled	Database:	EQT

Survey

Measured Depth (usft)	Inclination (°)	Azimuth (°)	Vertical Depth (usft)	+N/-S (usft)	+E/-W (usft)	Map Northing (usft)	Map Easting (usft)	Latitude	Longitude
29,905.0	90.77	162.77	7,634.8	-17,220.9	10,942.0	364,794.34	1,762,186.86	39° 29' 54.645 N	80° 20' 33.881 W
30,000.0	90.57	162.58	7,633.7	-17,311.6	10,970.3	364,703.65	1,762,215.15	39° 29' 53.751 N	80° 20' 33.509 W
30,094.0	90.30	162.96	7,633.0	-17,401.4	10,998.1	364,613.87	1,762,242.99	39° 29' 52.866 N	80° 20' 33.143 W
30,189.0	90.26	163.72	7,632.5	-17,492.4	11,025.3	364,522.86	1,762,270.22	39° 29' 51.969 N	80° 20' 32.785 W
30,283.0	90.36	164.00	7,632.0	-17,582.7	11,051.5	364,432.57	1,762,296.35	39° 29' 51.079 N	80° 20' 32.440 W
30,377.0	90.50	163.84	7,631.3	-17,673.0	11,077.5	364,342.25	1,762,322.39	39° 29' 50.189 N	80° 20' 32.098 W
30,472.0	90.94	164.25	7,630.1	-17,764.3	11,103.6	364,250.92	1,762,348.50	39° 29' 49.289 N	80° 20' 31.754 W
30,567.0	91.00	163.63	7,628.5	-17,855.6	11,129.9	364,159.64	1,762,374.78	39° 29' 48.389 N	80° 20' 31.407 W
30,661.0	90.87	162.80	7,626.9	-17,945.6	11,157.0	364,069.66	1,762,401.92	39° 29' 47.502 N	80° 20' 31.050 W
30,755.0	90.83	163.56	7,625.5	-18,035.6	11,184.2	363,979.69	1,762,429.12	39° 29' 46.615 N	80° 20' 30.693 W
30,849.0	91.00	163.28	7,624.0	-18,125.7	11,211.1	363,889.61	1,762,455.94	39° 29' 45.728 N	80° 20' 30.340 W
30,943.0	91.20	163.58	7,622.2	-18,215.7	11,237.9	363,799.53	1,762,482.74	39° 29' 44.840 N	80° 20' 29.987 W
31,038.0	90.97	163.23	7,620.4	-18,306.8	11,265.0	363,708.50	1,762,509.87	39° 29' 43.943 N	80° 20' 29.630 W
31,126.0	91.10	163.52	7,618.9	-18,391.1	11,290.2	363,624.20	1,762,535.04	39° 29' 43.112 N	80° 20' 29.299 W
31,148.0	91.10	163.52	7,618.4	-18,412.2	11,296.4	363,603.10	1,762,541.28	39° 29' 42.904 N	80° 20' 29.217 W

TD at 31148.0 MD_7618.4 TVD

Design Targets

Target Name	Dip Angle (°)	Dip Dir. (°)	TVD (usft)	+N/-S (usft)	+E/-W (usft)	Northing (usft)	Easting (usft)	Latitude	Longitude
Elliott_16H_(1)Surface F - hit/miss target - Shape - actual wellpath hits target center - Point	0.00	360.00	0.0	0.0	0.0	382,015.26	1,751,244.88	39° 32' 43.809 N	80° 22' 55.620 W
Elliott_16H_(3)Bottom H - actual wellpath hits target center - Point	0.00	360.00	7,618.4	-18,412.2	11,296.4	363,603.10	1,762,541.28	39° 29' 42.904 N	80° 20' 29.217 W
Elliott_16H_(2)Landing F - actual wellpath hits target center - Point	0.00	0.00	7,827.3	1,595.2	3,719.0	383,610.49	1,754,963.83	39° 32' 59.933 N	80° 22' 8.344 W



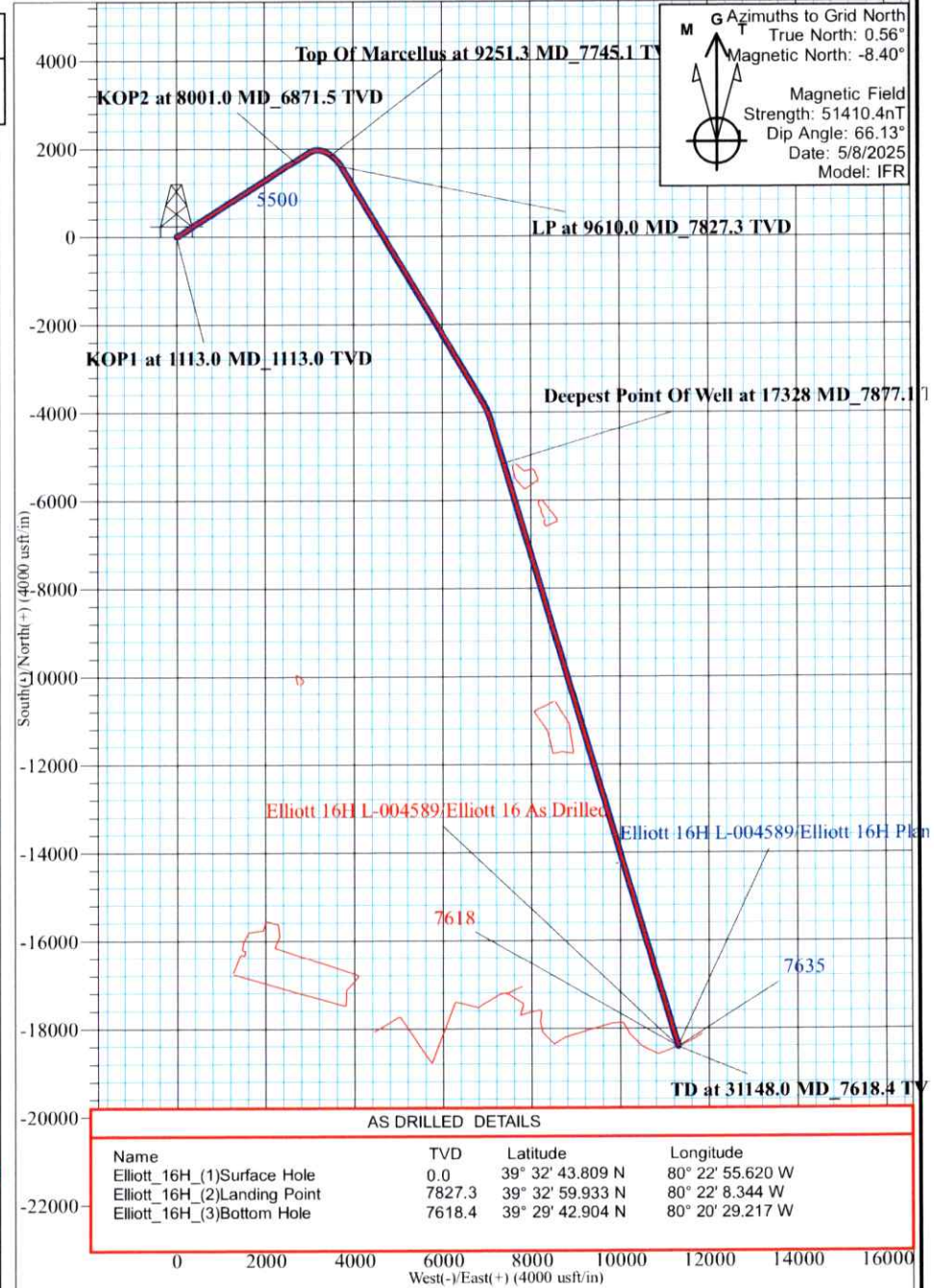
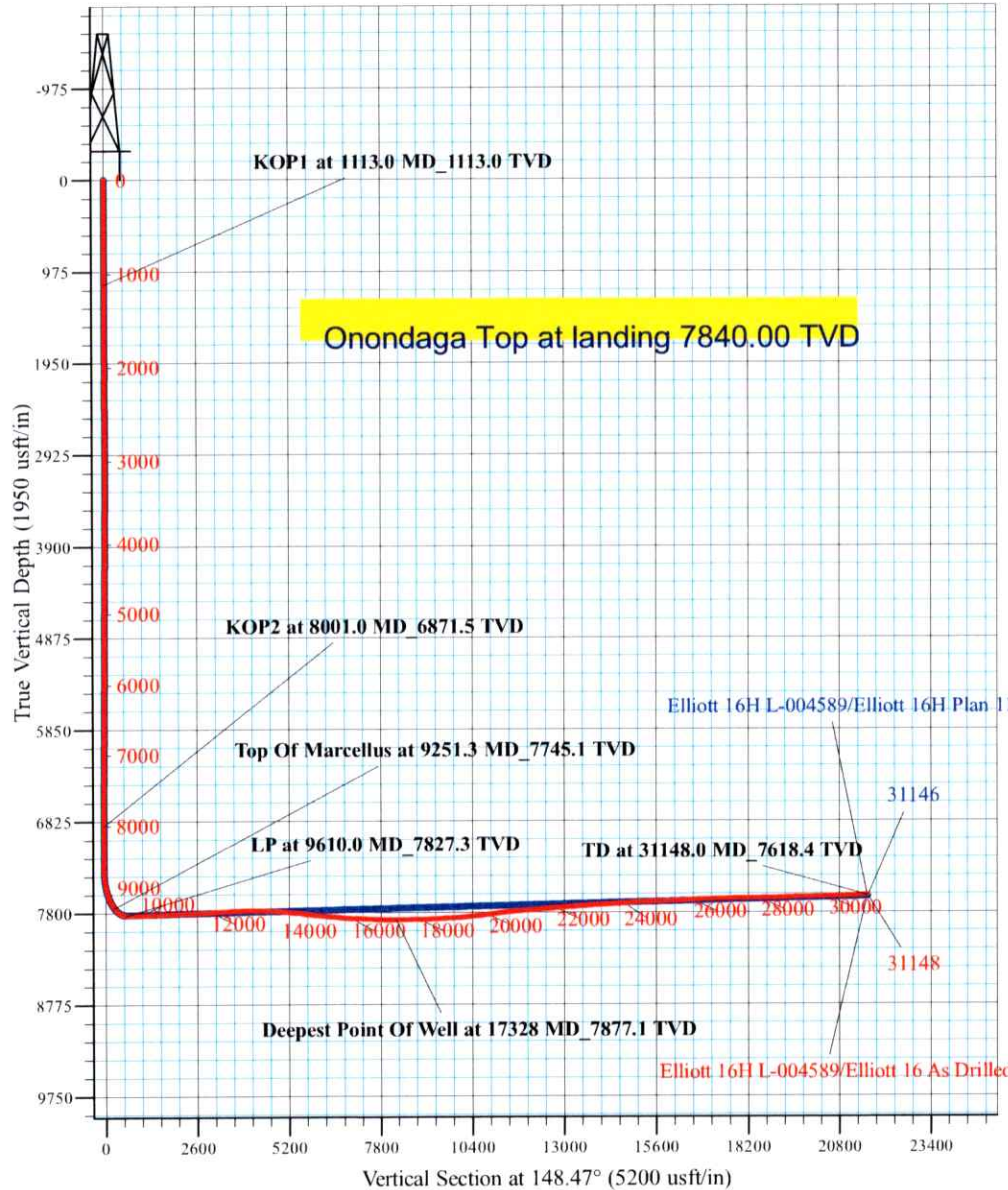
Elliott Pad
 Elliott 16 As Drilled
 KB@28 @ 1371.0usft
 Marion County, WV
 Main

PROJECT DETAILS:
 Geodetic System: US State Plane 1927 (Exact solution)
 Datum: NAD 1927 (NADCON CONUS)
 Ellipsoid: Clarke 1866
 Zone: West Virginia North 4701
 System Datum: Mean Sea Level



WELL DETAILS: Elliott 16H L-004589

+N/-S	+E/-W	Northing	Easting	Latitude	Longitude
0.0	0.0	382015.26	1751244.88	39° 32' 43.809 N	80° 22' 55.620 W



Magnetic Field
 Strength: 51410.4nT
 Dip Angle: 66.13°
 Date: 5/8/2025
 Model: IFR

Grid Azimuths to Grid North
 True North: 0.56°
 Magnetic North: -8.40°