

LATITUDE 39 35

LONGITUDE 80 05

+ 1.32 S  
1.95 W

7'5 OGIS topo location

7.5' loc \_\_\_\_\_ 15' loc \_\_\_\_\_  
(calc.) \_\_\_\_\_

Company \_\_\_\_\_

Farm JC RICE 57

Quad RIVESVILLE

County MARION

District PAW PAW

WELL LOCATION MAP

File No. 30022

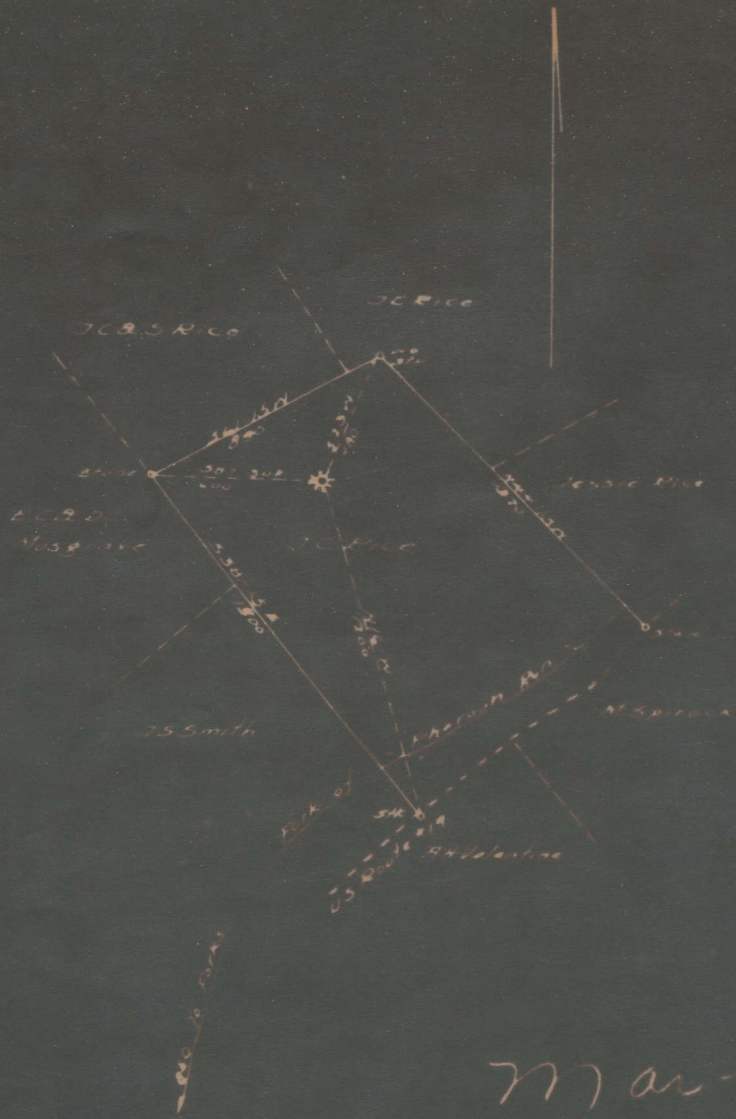
Well No. 1 on J.C. Rice

Tract of 30 acres

Located in Fox Paw

District: Marion

County



Mar-22-17

Map 100

ENGINEER'S CERTIFICATE

I hereby certify that the above is a true and correct copy of the original map as shown to me by the owner of the land shown thereon.

A. Fischer

Notary Public

Seal

Faw Paw District, Marion County, W. Va.

By Owens-Illinois Glass Co. Gas Dept., Charleston, W. Va.

On 30 acres, surface and mineral rights owned by J. C. Rice,  
Rivesville, W. Va.

Well was completed April 15, 1924.

Elevation, 1145' B.

16" conductor, 16'; 10" casing, 490'; 6-5/8", 1748'; 2" tubing, 2351'.

Hook wall packer, 2 x 6-5/8 x 10, set at 2018'.

2" tubing perforated at 2310-2316'.

Coal was encountered at 330-335 and 425-430'.

Abandonment reported to Dept. of Mines Sept. 26, 1930;

Well was shot at 2316-2331'.

Salt water at 1437'.

Well cemented 50' above and 50' below Pittsburgh Coal, using  
40 sacks cement and 80 sacks sand, 2-21-24.

	Top.	Bottom.	Thickness.
Surface gravel, slate and shells	0	- 330	330
Mapletown (Sewickley) Coal	330	- 335	5
Lime and shells	335	- 425	90
Pittsburgh Coal	425	- 430	5
Slate and red rock	430	- 855	425
Sandy lime	855	- 880	25
Red rock and slate	880	- 1070	190
Lime	1070	- 1090	20
Gas Sand	1090	- 1185	95
First Salt Sand and Second	1185	- 1295	110
Break slate between First and Third Salt Sands	1295	- 1345	50
Third Salt Sand (small show of water)	1345	- 1437	92
Lime, sand, and shells	1437	- 1520	83
Slate	1520	- 1620	100
Maxton Sand	1620	- 1635	15
Slate	1635	- 1700	65
Little Lime	1700	- 1714	14
Pencil Cave	1714	- 1720	6
Big Lime	1720	- 1835	115
Big Injun Sand (gas, 1910-1915'; show oil, water, and gas)	1835	- 1955	120
Slate	1955	- 2000	45
Squaw Sand	2000	- 2070	70
Slate and shells	2070	- 2254	184
Gantz Sand	2254	- 2270	16
Slate and lime	2270	- 2330	60
Fifty-foot Sand (gas, 2333-2337')	2330	- 2470	140
Slate and shells	2470	- 2542	72
Gritty lime	2542	- 2560	18
Red rock and shells	2560	- 2715	155
Lime	2715	- 2730	15
Slate	2730	- 2762	32
Fifth Sand	2762	- 2769	7
Slate	2769	- 2836	67
Gritty lime	2836	- 2880	44
Slate, to bottom	2880	- 2931	51
PLUGGED BACK TO 2335':			
Stones, etc.	2931	- 2767	
6-5/8" dry hole plug	2767	- 2761	
Stones, etc.	2761	- 2410	
Bridge		2410	
Stones, etc.	2410	- 2335	
Present total depth		2335	