

LATITUDE 39 37 30

+

1.05s
2.00w

LONGITUDE 80 20

7'5 OGIS topo location

7.5' loc _____ 15' loc _____
(calc.) _____

Company _____

Farm M J HAWKINS 1

Quad MANNINGTON

County MARION

District MANNINGTON

WELL LOCATION MAP

File No. 30028

M. J. Hawkins well No. 1 - Mannington District, Marion County, West Virginia.

ENGINEER'S CERTIFICATE

I, the undersigned hereby certify that this map is correct and shows all the information to the best of my knowledge and belief as required by the Oil and gas section of the mining laws of West Virginia.

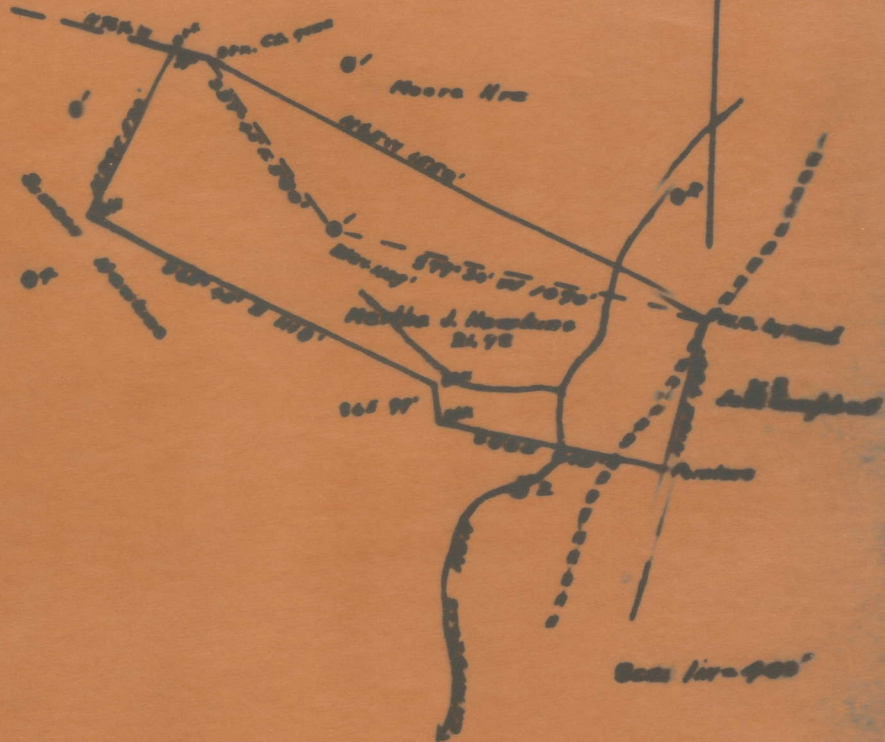
Frank Sedman
Engineer

Acknowledged before me a Notary Public this 3rd. day of February, 1931.

My commission expires the 30th day of March, 1931.

John F. Wigham
Notary Public

JOHN F. WIGHAM, NOTARY PUBLIC
MY COMMISSION EXPIRES, MAR. 30, 1931



Mar - 28 - a

Mannington District, Marion County, W. Va.
 By South Penn Oil Co., P. O. Drawer 1255, Pittsburgh, Pa.
 On 21.7 acres, surface owned by Henry Hawkins, Metz, W. Va., and
 mineral rights by Daisy L. Beardsley, Mannington, W. Va.
 Elevation, 1139' L.
 10" casing, 179' 5"; 8 1/2", 1451' 3"; 6-5/8", 2240' 8"; 5-3/16",
 2412' 10".

MAR-28-A

Coal was encountered at 890-895 and 978-990'.
 Abandonment reported to Dept. of Mines Feb. 3, 1931.
 Well was not shot.
 Salt water at 2405'.
 Oil well.

	Top.	Bottom.
Slate	16	- 100
Lime and slate	100	- 590
Bluff Sand	590	- 640
Slate and lime	640	- 890
Mapletown (Sewickley) Coal	890	- 895
Lime	895	- 978
Pittsburgh Coal	978	- 990
Red rock	990	- 1030
Lime and sand	1030	- 1100
Slate	1100	- 1315
Lime and sand	1315	- 1462
Dunkard Sand	1462	- 1570
Lime, slate, and sand	1570	- 1930
Salt Sand	1930	- 2010
slate	2010	- 2025
Sand	2025	- 2075
Slate	2075	- 2100
Red rock	2100	- 2255
Big Lime formation	2255	- 2320
Big Injun Sand (water, 2405') (hole full)	2320	- 2460
Sand	2460	- 2500
Slate and lime	2500	- 2950
50-Ft. Sand (gas, 2965')	2950	- 3000
Slate and shells	3010	- 3115
Stray Sand	3115	- 3130
Slate	3130	- 3138
Gordon Sand (oil, 3139 and 3148')	3138	- 3165
Total depth		3165