

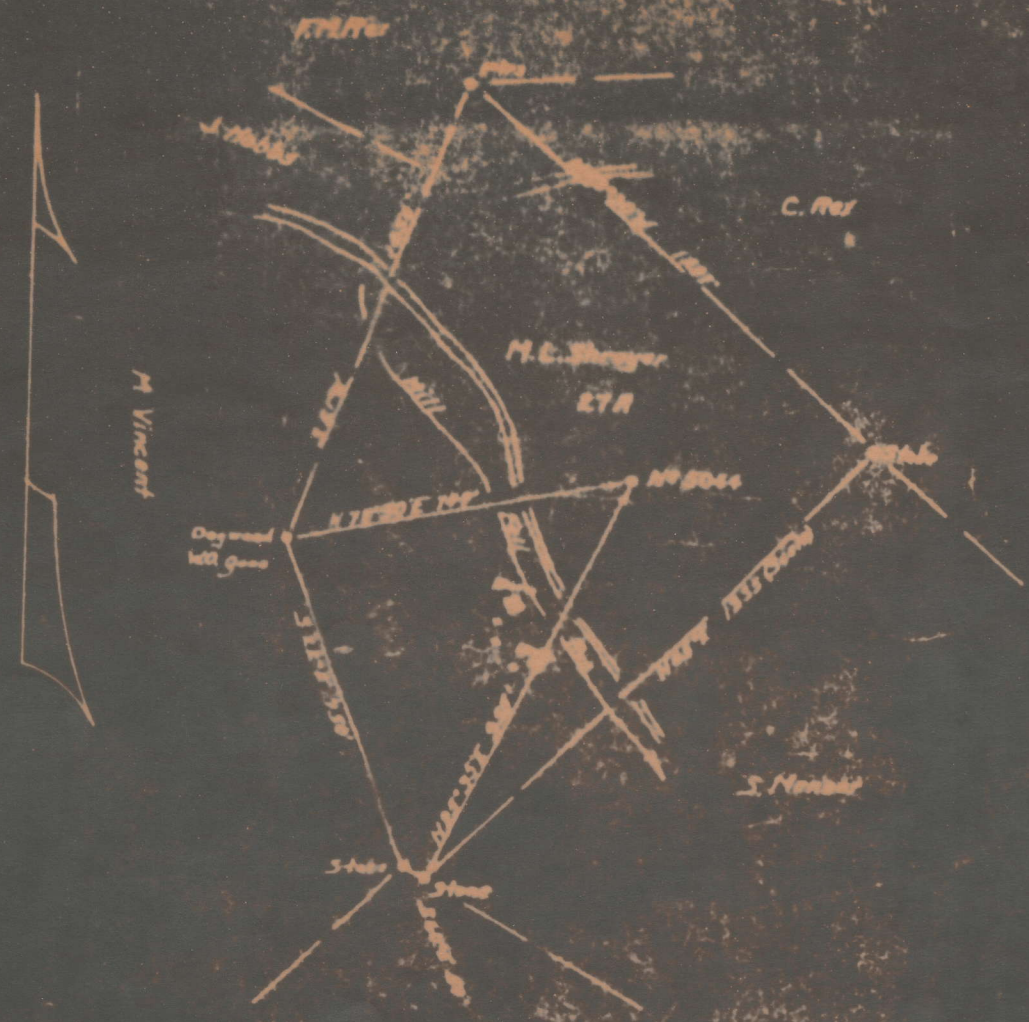
LEASE NO. 7652

LESSOR: *W. C. ...*

DISTRICT *... Fairmount ...*

QTR. QUADRANGLE *... 1875 ...*

LEASE EXPIRES ... ELEVATION 1875-8



*R.E. Morgan*

SCALE: 1" = 300'

ENGINEER'S CERTIFICATE

I, THE UNDERSIGNED, HEREBY CERTIFY THAT THIS MAP IS CORRECT AND BEGINS ALL THE INFORMATION TO THE BEST OF MY KNOWLEDGE AND BELIEF, REQUIRED BY THE OR. AND REG. SECTION OF THE MINING LAWS OF THE STATE OF MISSISSIPPI.

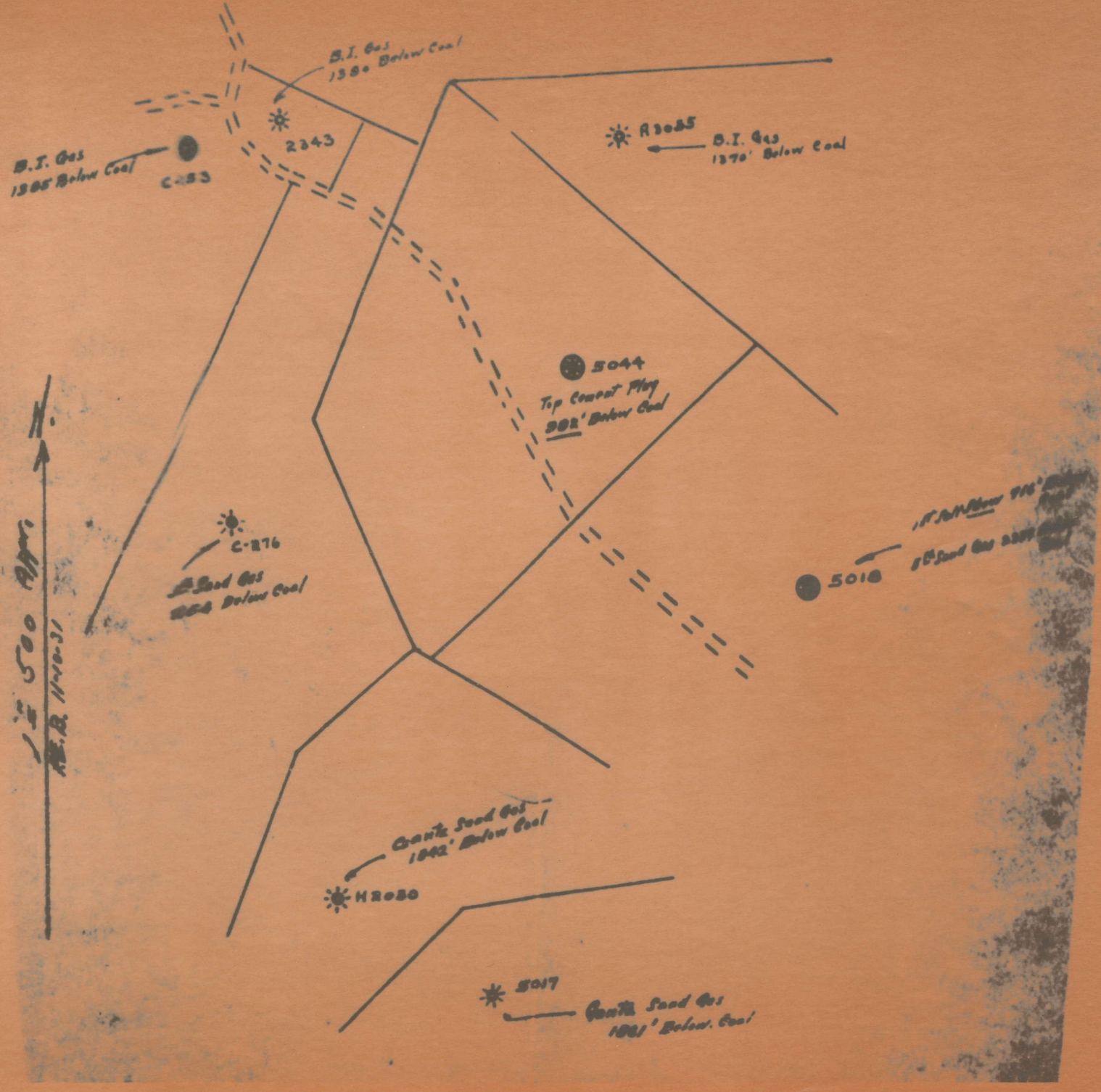
*James P. Jeffries*

ACKNOWLEDGED BEFORE ME, A NOTARY PUBLIC, THIS 17th DAY OF AUGUST, 1901



W. C. ...  
By Commission Expires

*W. C. ...*  
NOTARY PUBLIC



LATITUDE 39 30



LONGITUDE 80 12 30

7'5 OGIS topo location

7.5' loc \_\_\_\_\_ 15' loc \_\_\_\_\_  
 \_\_\_\_\_ (calc.) \_\_\_\_\_

Company \_\_\_\_\_

Farm ML SHROYER 5044

Quad FAIRMONT WEST

County MARION

District FAIRMONT

WELL LOCATION MAP

File No. 30043

Fairmont District, Marion County, W. Va.

By Pittsburgh & W. Va. Gas Co., Clarksburg, W. Va.

On 27 acres, surface and mineral rights owned by C. C. Shroyer,

R. F. D. No. 1, Fairmont, W. Va.

Well completed Jan. 6, 1913.

Elevation, 1107' L.

13" conductor, 16'; 10" casing, 390'; 8 $\frac{1}{2}$ " , 1336'; 6-5/8" , 1682';

5-3/16" , 2572'.

Coal was encountered at 245-251 and 360-369'.

Well located Oct. 14, 1912; began drilling, Dec. 4, 1912;

completed, Jan. 6, 1913; producing from Big Injun, 4th and 5th Sands.

Abandonment reported to Dept. of Mines Aug. 19, 1931.

Well was shot in 5th Sand at 2721'.

Salt water at 1280-1335'.

5-3/16" hole. Gas well.

	Top.	Bottom.	Thickness.
Slate-Shell, white, soft	0	80	80
Lime, hard	80	245	165
Coal, Mapletown (Sewickley)	245	251	6
Lime-Shell	251	290	39
Slate-Shell	290	360	70
Coal, black, soft, Pittsburgh	360	369	9
Slate, black, soft	369	422	53
Lime, white, hard	422	458	36
Slate-Shell, white, soft	458	610	152
Gritty lime, white, hard	610	625	15
Slate-Shell, white, hard	625	750	125
Little Dunkard Sand, white, hard	750	755	5
Slate-Shell, white	755	805	50
Sand, white, hard	805	840	35
Slate-Shell, white, hard	840	935	95
Big Dunkard Sand	935	955	20
Slate-Shell, dark, hard	955	990	35
Sand, white, hard	990	1020	30
Slate-Lime, dark, hard	1020	1100	80
Gas Sand, white, hard	1100	1125	25
Slate-Shell, white, hard	1125	1175	50
1st Salt Sand, white, hard	1175	1205	30
Slate-Shell, hard	1205	1265	60
2nd Salt Sand, white, hard (water 1280-1335', 15 bailers)	1265	1374	109
Slate-Lime, dark, soft	1374	1490	116
Red rock, hard	1490	1660	170
Pencil Cave, dark, soft	1660	1670	10
Big Lime, white, hard	1670	1708	38
Big Injun Sand (gas, 1728')	1708	1815	107
Slate, dark, soft (SLM, 1818')	1815	1818	3
Slate, dark, soft	1818	1824	6
Squaw Sand, white, hard	1824	1844	20
Slate-Shell, red, hard-soft	1844	1871	27
Lime, white, hard	1871	1920	49
Sand, white, hard	1920	1935	15
Slate, black, soft	1935	1941	6
Lime, white, hard	1941	1960	19
Sand, white, hard	1960	1976	16

(OVER)

MAR-43-A

M. L. SHROYER NO. 5044 WELL (Continued).

	Top.	Bottom.	Thickness.
Lime, white, hard	1976	- 2085	109
Sand, white, hard	2085	- 2091	6
Lime, white, hard	2091	- 2100	9
Sandy lime, white, hard	2100	- 2120	20
Lime, white, hard	2120	- 2126	6
Slate, black, soft	2126	- 2132	6
Lime, white, soft and hard	2132	- 2180	48
Gantz Sand, white, hard	2180	- 2209	29
Slate, dark, soft	2209	- 2210	1
50-Ft. Sand, white and gray, hard (gas, 2211-13' and 2245-48')	2210	- 2261	51
Slate, dark, soft	2261	- 2263	2
30-Ft. Sand, white, hard	2263	- 2298	35
Slate, dark, soft	2298	- 2305	7
2nd Sand, white, hard (30-Ft.)	2305	- 2320	15
Slate, dark, soft	2320	- 2325	5
Sand-Lime, white, hard	2325	- 2340	15
Red rock, soft	2340	- 2343	3
Sand, white, hard	2343	- 2350	7
Red rock, soft	2350	- 2354	4
Sand, white, hard	2354	- 2370	16
Slate-Shell, dark, soft and hard	2370	- 2388	18
Sand, medium, very hard	2388	- 2420	32
Slate, dark, soft	2420	- 2423	3
Sand, medium, hard	2423	- 2430	7
Red rock, soft and hard	2430	- 2454	24
Sand, dark, hard	2454	- 2470	16
Shell-Red Rock, soft and hard	2470	- 2520 (SLM)	50
Gordon Stray Sand, dark, soft and hard	2520	- 2544	24
Slate, dark, soft	2544	- 2550 (SLM)	6
Gordon Sand, dark, hard	2550	- 2601	51
Slate, dark, soft	2601	- 2604	3
4th Sand, dark, hard	2604	- 2616	12
Slate, dark, soft	2616	- 2622	6
2nd 4th Sand, dark, hard	2622	- 2631	9
Slate, white, soft	2631	- 2637	6
Lime, dark, hard	2637	- 2644	7
3rd 4th Sand, white and dark, hard (oil, 2644-48'; gas, 2661')	2644	- 2665	21
Slate, dark, soft	2665	- 2668	3
Sand shell, white, hard	2668	- 2672	4
Slate, dark, soft	2672	- 2698	26
5th Sand, dark, hard	2698	- 2713	15
Slate, dark, soft	2713	- 2715	2
2nd 5th Sand, dark, hard (gas, 2717-20)	2715	- 2755	40
Slate, dark, soft	2755	- 2810	55
Total depth		2810	

Record of Well No. 5044 Located on M. R. Thayer Farm Est 14th 1912  
 District Fairmont County W. Va. State  
 Division 0 District No. 11 Drilled under Well Order 541  
 Rig built by John Craig Began Nov. 15th 1912 Completed Nov. 24th 1912  
 Well drilled by Mark Hartness Began Dec. 4th 1912 Completed Jan. 6th 1913  
 " " desperly " " Sept. 23, 1915. " Oct. 30. 1915  
 Depth of Well 1818 feet Size of Hole 6 5/8 Producing Gas,  
 Elev: 1107 2810 5 7/16

CASED WITH

REMARKS

AMOUNT	SIZE	KIND	REMARKS
16	16	Wood	10" casing cemented
390	10	Flow	
1336	8 1/4"	"	
1682	6 3/8	"	
1827	3"	"	Rd. Sept. 24, 1915
447	5 1/2"	"	5 3/4" casg. show on bottom Rd. 11/13/15
2131	5 1/2"	old	
2212	3"	old	

COAL VEINS

FORMATIONS

NAME	TOP	BOTTOM	OIL	GAS	WATER	REMARKS
Little Sandhard	750	755				
Big Sandhard	935	955				
Gas Sand	1100	1125				
1st Salt Sand	1173	1205				
2nd Salt Sand	1265	1374				
Little Lime	1658	1665				
Big Lignite	1708	1815		1728		
Total depth		1818				
Sandy sand	2180	2207		2211 to 2213 to 2215 to 2218		in 50 FT. steel line 30% water, 2" spng. 231 Mcf
50 Ft. "	2210	2261		2218		
30 Ft. "	2263	2293				
Break	2293	2305				
2nd 30 Ft. sand	2305	2320				
Gas. Stray	2520	2544				
Gas. Sand	2550	2601				
4th "	2604	2616				
Break	2616	2622				
2nd 4th sand	2622	2631				
Break of slate	2631	2637				
3rd 4th sand	2637	2644				
2nd 4th sand	2644	2665	2644	2661		dry small show.
Break of slate	2665	2668				
4th 4th sand	2668	2672				
5th sand	2698	2713				
Break of slate	2713	2715				
2nd 5th sand	2715	2755		2717 to 2720		60 Mcf 70% water 2" spng. 70% water 1" spng.
Slate	2810					Rig Rd. Jan 8, 16. moved to Loc. # 5141 Boggs

FIRST PRESSURE TEST IN				6 7/8" CASING	REMARKS
30 Sec.	45	lbs.	0 #	25 #	Shot with 10 pts in 5th sand 11/2/15. Before shot 70 water 3" plug 60 Mcf after " 70 " 2" " 146 Mcf R.P. 15 hrs. 317# after shot. 11/2/15.
1 Min.	68	"	0 #	45	
2 "	115	"	2 #	58	
5 "	250	"	10 #	95	
10 "	350	"	13 #	120	
15 "	400	"	20' 25 #	20' 148	
30 "	450	"	40 #	150.	
Rock Pressure	" in		250* 2 hrs.	297* 11/15	
Taken	Jan 5th 1913		10/30/15	11/2/15	
By	Reynolds		Shupp	Shupp	

WELL TUBED AND PACKED Jan 7th 1913

VIZ:-  
82 ft 1827 ft 3" Tubing  
1-6 7/8" 3" anchor packer  
6 7/8" 107ft of anchor

FIRST PRESSURE TEST IN			3" TUBING	6 7/8" 3"	REMARKS
30 Sec.	75	lbs.	5	0 #	
1 Min.	150	"	8	5 #	
2 "	255	"	14	8 #	
5 "	375	"	45	15 #	
10 "	410	"	85	25	
15 "	430	"	120	35	
30 "	443	"	210	55	
Rock Pressure	575	" in / 8 hrs	435* 23 hrs	60 min 80"	
Taken	Jan. 7th 1913		11/15/15.	11/16/15.	
By	Reynolds		Reynolds	Reynolds	

MATERIAL FOR THIS WELL RECEIVED FROM FOLLOWING SOURCES:

Well Retubed & Packed Nov. 15, 1915  
98 ft to 2212 ft 3" Tubing  
1-6 7/8" 3" Larkin Hook wall packer  
1-3" R. & Z. nipple & collar top packer  
Left in hole 1 string of 5% Tools <sup>out</sup> + Bowl + slips on top tools