

LATITUDE 39 37 30

LONGITUDE 80 20

2.43 S
.04 W

7'5 OGIS topo location

7.5' loc _____ 15' loc _____
(calc.) _____

Company _____

Farm GEORGE CROSS 2

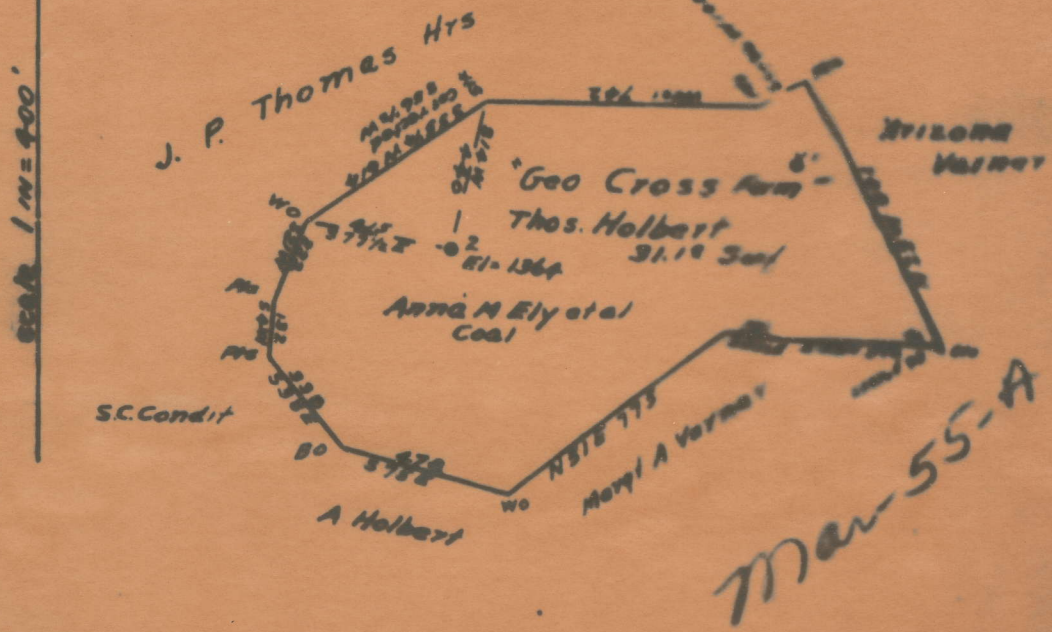
Quad MANNINGTON

County MARION

District MANNINGTON

WELL LOCATION MAP

File No. 30055



ENGINEER'S CERTIFICATE

I, the undersigned, hereby certify that this map is true and correct, and shows all the information to the best of my knowledge and belief as required by the oil and gas section of the mining law of West Virginia.

Frank Ferguson
ENGINEER

Acknowledged before me a Notary Public this 20th day of December, 1931.
My commission expires March 30th, 1933.

John F. Higgins
NOTARY PUBLIC

JOHN F. HIGGINS, NOTARY PUBLIC
BY COMMISSION EXPIRES, MAR. 30, 1933

Mannington District, Marion County, W. Va.

By South Penn Oil Co., P. O. Drawer 1255, Pittsburgh, Pa.

On 31.1 acres, surface owned by T. J. and Ruth Halbert, R. F. D.,

Mannington, W. Va., and mineral rights by Savilla E. Cross,

Mannington, W. Va., District No. 4.

Elevation, 1364' L.

10" casing, 375'; 8 1/2", 1487'; 6-5/8", 2375'; 5-3/16", 827'.

Coal was encountered at 1027-1037'.

Abandonment reported to Dept. of Mines Dec. 29, 1931.

Well was shot in Gordon Sand.

Oil well.

MAR-55A

	Top.	Bottom.
Pittsburgh Coal	1027	- 1037
Dunkard Sand	1531	
Salt Sand	1890	- 1930
Pencil Cave	2235	- 2241
Big Lime	2241	- 2297
Big Injun Sand (gas, 2300 and 2330')	2297	- 2430
Gantz Sand	2975	- 2990
Fifty-foot Sand	3000	- 3100
Gordon Sand (oil, 3254 1/2')	3250	
Total depth		3274