

LATITUDE 39 32 30

+.803
+.21w

LONGITUDE 80 20

7'5 OGIS topo location

7.5' loc _____

15' loc _____
(calc.) _____

Company _____

Farm BURT MFG CO 11

Quad MANNINGTON

County MARION

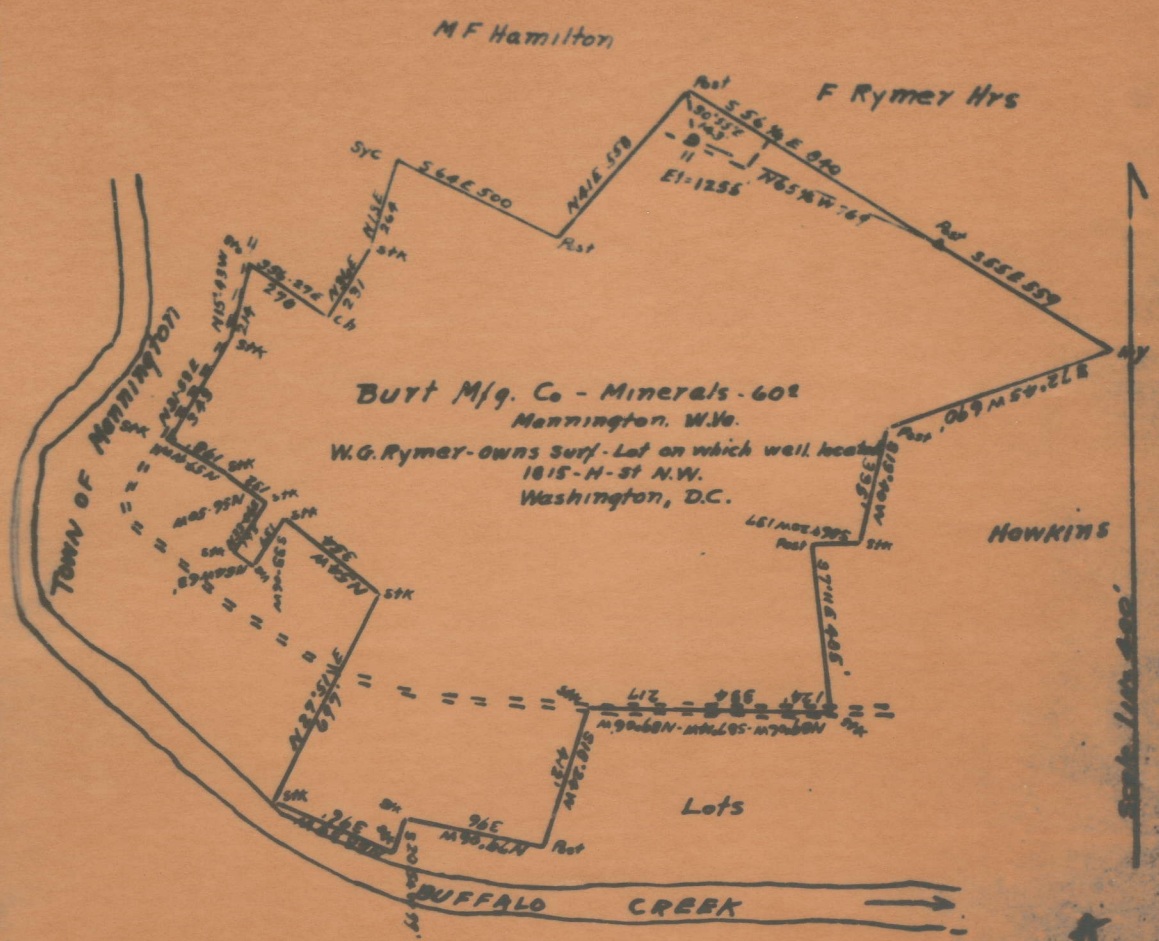
District MANNINGTON

WELL LOCATION MAP

File No. 30071

SOUTH PENN OIL COMPANY
PROPOSED ABANDONMENT

Well No. 11, Burt Mfg. Co. Farm, Mannington District, Marion County, W. Va.



ENGINEER'S CERTIFICATE.

I, the undersigned, hereby certify that this Map is correct and shows all the information to the best of my knowledge and belief, required by the oil and gas section of the Mining Laws of West Virginia.

Frank Padgett
Engineer.

Acknowledged before me, a Notary Public of Allegheny County, Pa., this 22nd day of September, 1932.

John F. [Signature]

Mar-71-A

Mannington District, Marion County, W. Va.
 By South Penn Oil Co., P. O. Drawer 1255, Pittsburgh, Pa.
 On 83 acres, surface owned by W. G. Rymer, 1815 H St., N. W.,
 Washington, D. C., and mineral rights by Burt Mfg. Co.,
 Mannington, W. Va.

Elevation, 1255' L.

10" casing, 225'; 7-5/8", 1030'; 6", 1450'; 4-7/8", 1960'.

Coal was encountered at 680'.

Abandonment reported to Dept. of Mines Sept. 22, 1932.

Oil well.

	Top.	Bottom.
Pittsburgh Coal	680	
Big Injun Sand (oil, 2117 and 2121')	2012	
Total depth		2150

MAR-7KA