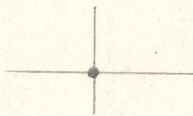


LATITUDE 39 30

LONGITUDE 80 22 30



1.255
1.46w

7'5 OGIS topo location

7.5' loc _____

15' loc _____
(calc.) _____

Company _____

Farm B F HELDRETH 3

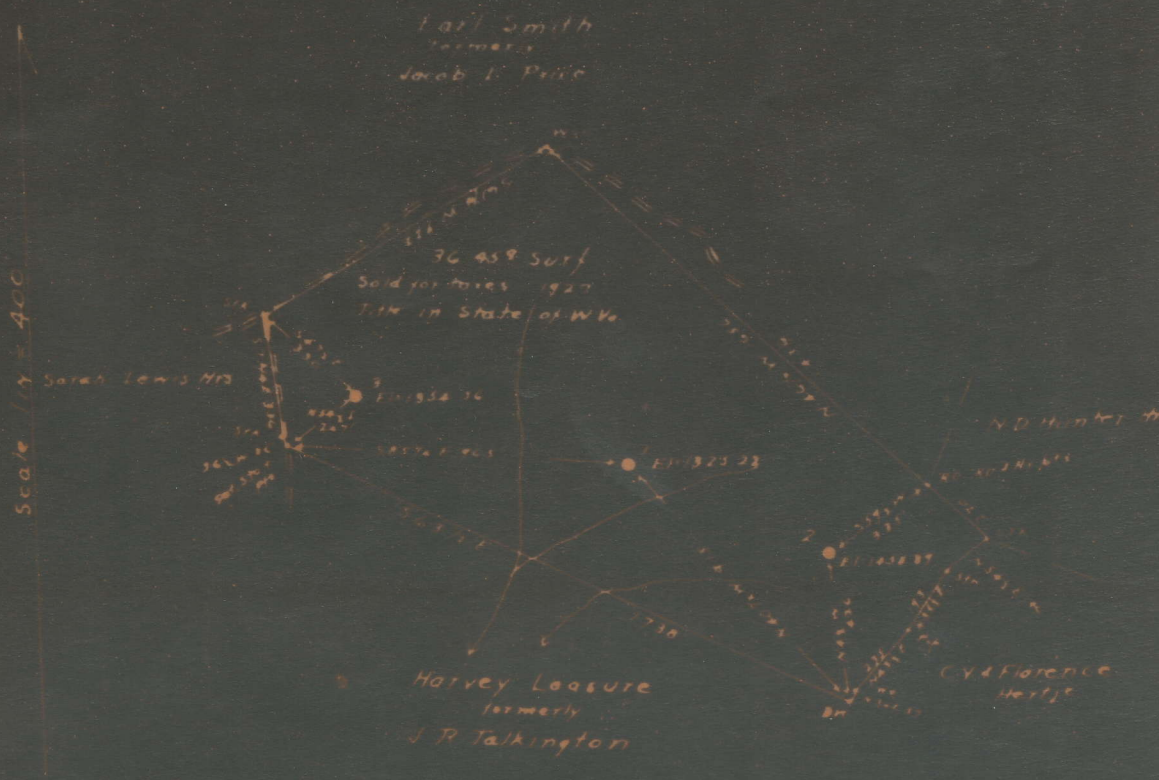
Quad WALLACE

County MARION

District MANNINGTON

WELL LOCATION MAP

File No. 30112



Coal part of 110 92 8 assessed to Phillip Sesler, et al
 and Stern Bros Inc et al - Uniontown, Pa

South Penn Oil Co
 Survey for abandonment of Wells No. 1-2 & 3
 B. F. Heldreth, Head of Quaker Fork of Biggaman Creek
 Mannington Dist. Marion Co. W Va. 4/11/35

Mar 11 2

Mannington District, Marion County, W. Va.
 By South Penn Oil Co., Chamber of Commerce Bldg., Pittsburgh, Pa.
 On 40 acres, surface owned by State of West Virginia, Charleston,
 W. Va., and mineral rights by B. F. Heldreth Heirs et al.,
 %H. A. Harbert, Lumberport, W. Va.

Elevation, 1354.36' L.

16' conductor; 10" casing, 362' (pulled 279'); $\frac{8}{2}$ "², 1645';
 6-5/8" π 2641'.

Coal was encountered at 1255-1259'.

Liner: 188' of $5\frac{1}{8}$ x 5".

Abandonment reported to Dept. of Mines May 3, 1935.

Well was shot Aug. 7, 1906, with 20 qts.

	Top.	Bottom.
Pittsburgh Coal	1255	- 1259
Salt Sand	2150	- 2220
Big Lime	2475	- 2555
Big Injun Sand	2555	- 2655
Fifty-foot Sand	3150	- 3180
Stray Sand (oil, 3318')	3263	- 3333
Slate	3333	- 3340
Gordon Sand	3340	- 3369
Slate, to bottom	3369	- 3373

MAR-112-A