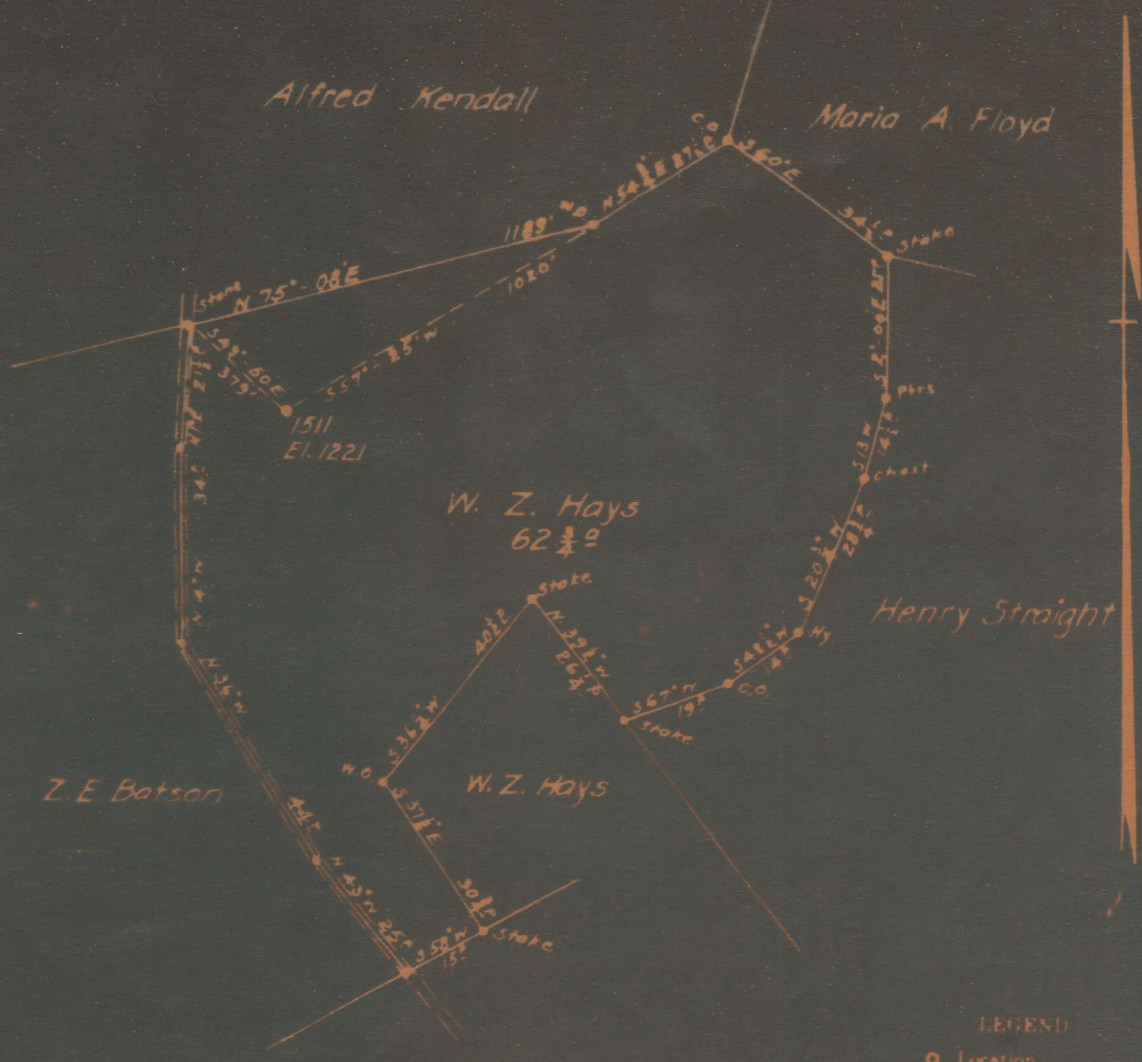




Plat of **WELL NO. 1511**  
**HOPE CONSTRUCTION & REFINING CO.**  
**W. Z. HAYS**  
**MANNINGTON**

of the  
 Clarksburg, W. Va. on the  
 Farm consisting of **62 1/2** Acres  
 District **MARION**  
 County W. Va.



**LEGEND**  
 ○ Location  
 ● Oil Well  
 ⊙ Aband  
 ⊛ Gas Well  
 ⊙ Aband  
 ⊕ Dry Hole  
 Field Book No. **53886**  
 Scale **1" = 400'**  
**42 x 8 1/2**

Thos. Satterfield  
 Mar 113

Mannington District, Marion County, W. Va.  
 By Hope Construction & Refining Co., 445 W. Main St.,  
 Clarksburg, W. Va.  
 On 62-3/4 acres, surface owned by W. Z. Hays Heirs, Route 5,  
 Mannington, W. Va.

Elevation, 1221' L.  
 6-5/8" casing, 2217'; 5-3/16", 2925'; 2" tubing, 2999'.  
 Coal was encountered at 972-978'.  
 Abandonment reported to Dept. of Mines May 10, 1935.  
 Well was shot at 2997-3002'.  
 Salt water at 1900'.  
 Oil well.

MAR-113-A

	Top,	Bottom.	Thickness.
Pittsburgh Coal	972 -	...?	App. 7
Little Dunkard Sand	1370 -	1400	30
Big Dunkard Sand	1448 -	1550	102
Gas Sand	1630 -	1740	110
First Salt Sand	1784 -	1820	36
Second Salt Sand (water, 1900')	1860 -	1984	124
Maxton Sand	2060 -	2074	14
Little Lime	2197 -	2204	7
Big Lime	2207 -	2290	83
Big Injun Sand	2290 -	2440	150
Fifty-foot Sand (oil, 2996')	2900 -	2975	75
Thirty-foot Sand (oil, 3002')	2991		
Total depth			3015