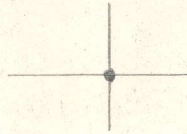


LATITUDE 39 37 30



.865
.96 W

LONGITUDE 80 20

7'5 OGIS topo location

7.5' loc _____ 15' loc _____
(calc.) _____

Company _____

Farm GEORGE WILSON 2

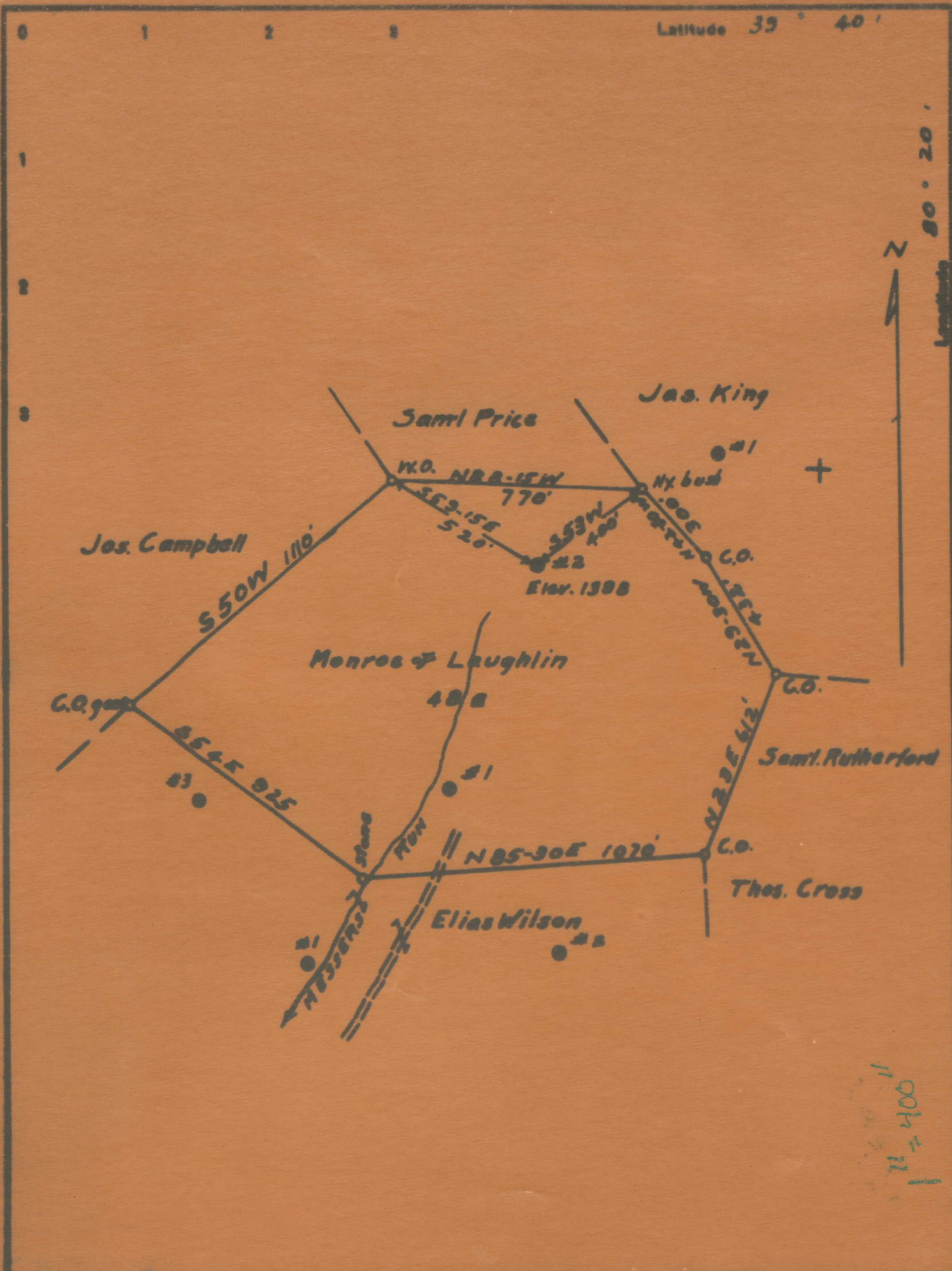
Quad MANNINGTON

County MARION

District MANNINGTON

WELL LOCATION MAP

File No. 30138



Company Monroe & Laughlin
 Town Clarksburg, W. Va.
 Form Monroe & Laughlin

STATE OF WEST VIRGINIA
 DEPARTMENT OF MINES
 OIL AND GAS DIVISION
 CHARLESTON

Monroe + Laughlin

138A

Mannington District, Marion County, W. Va.

By Monroe & Laughlin, Clarksburg, W. Va.

On 46 acres, surface owned by Monroe & Laughlin, Clarksburg, W. Va.,
and mineral rights by Union Trust Co., Trustee, Pittsburgh, Pa.

~~2 1/2~~ No elevation given.

8 1/2" casing, 1663'; 6-5/8", 2606'; 5-3/16" liner, 239'; 2", 4.6-lb.
tubing, 3332'.

Abandonment report to Dept. of Mines not dated; received by Survey
Sept. 14, 1936.

Oil well.

	Top.	Bottom.
Mapletown (Sewickley) Coal	1060	- 1064
Pittsburgh Coal	1165	- 1171
Big Dunkard Sand	1660	- 1745
Gas Sand	1865	- 1960
Maxton Sand	2285	- 2345
Big Lime	2385	- 2456
Pencil Cave	2456	- 2461
Big Injun Sand	2461	- 2560
50-Ft. Sand	3115	- 3165
30-Ft. Sand	3207	- 3220
Campbells Run Sand (oil, 3317-3325')	3315	
Total depth		3332