

LATITUDE 39 35

1.425
.32W

LONGITUDE 80 20

7'5 OGIS topo location

7.5' loc _____ 15' loc _____
(calc.) _____

Company _____

Farm A F MILLAN 2

Quad MANNINGTON

County MARION

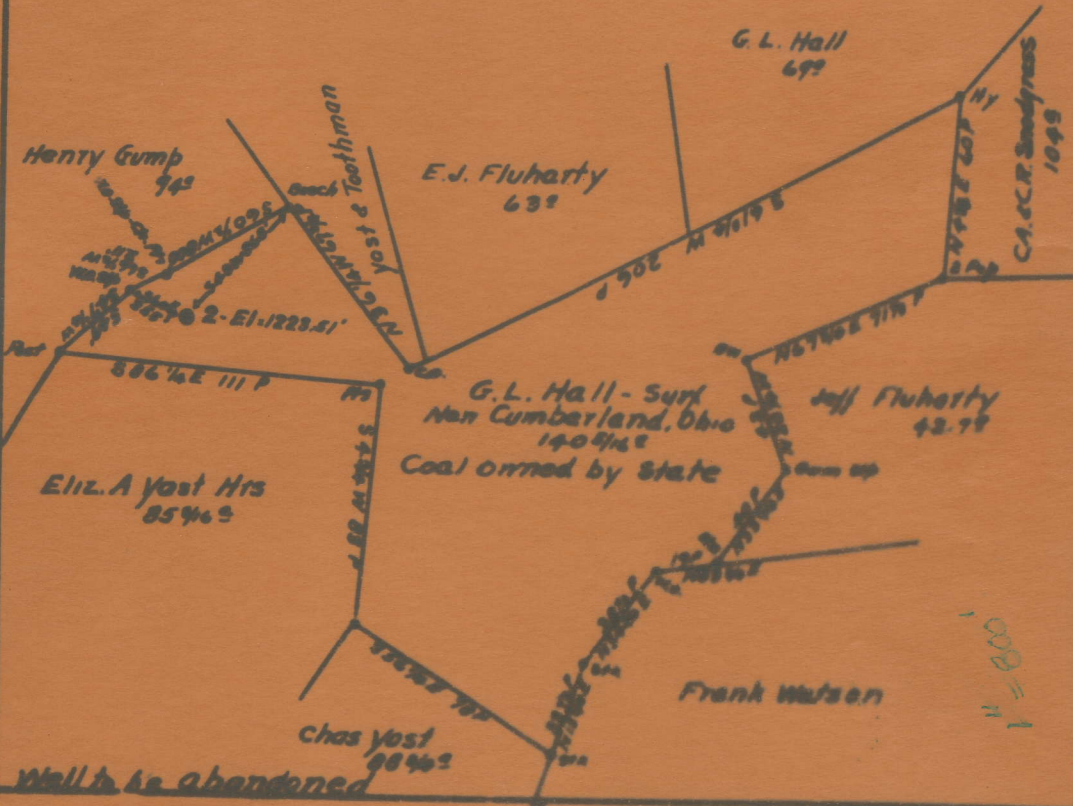
District MANNINGTON

WELL LOCATION MAP

File No. 30139

Latitude 39 35

Longitude 81 20



Well to be abandoned

Company South Penn Oil Co
 Address 211-7th Ave - Pittsburgh, Pa
 Farm A.F. Miller
 Tract Acres 144 Lease No 66260

STATE OF WEST VIRGINIA
 DEPARTMENT OF MINES
 OIL AND GAS DIVISION
 CHARLESTON

Mannington District, Marion County, W. Va.

By South Penn Oil Co., Chamber of Commerce Bldg., Pittsburgh, Pa.

On 141 acres, surface owned by G. L. Hall, Cumberland, Ohio, and mineral rights by C. L. Hall et al., Cumberland, Ohio.

Elevation, 1223.51' L.

16' conductor; 10" casing, 481' 2" (pulled); 8½", 1294' 5" (pulled); 6-5/8", 2086' 1"; 5-3/16", 2319' 6" (pulled?).

Coal was encountered at 671-677 and 781-789'.

4½ x 4" liner, 2544' 4".

Abandonment reported to Dept. of Mines August 11, 1936.

Well was shot in Big Injun Sand June 10, 1919, with 20 qts.

Salt water at 1685'.

Well plugged back to 2220', June, 1919, and operated as oil well in Big Injun since that date.

MAR-139-A

	Top.	Bottom.
Mapletown (Sewickley) Coal	671	- 677
Pittsburgh Coal	781	- 789
Big Dunkard Sand	1272	- 1322
Gas Sand	1453	
Salt Sand (water, 1685')	1680	- 1768
Little Lime	2030	- 2049
Pencil Cave	2049	- 2054
Big Lime	2054	- 2093
Big Injun Sand (gas, 2173'; oil show, 2197')	2093	- 2228
Squaw Sand	2270	- 2288
Gantz Sand	2345	- 2390
Fifty-foot Sand	2705	- 2760
Gordon Stray Sand	2960	- 2980
Gordon Sand (gas, 3013-3018')	3000	- 3020
Fourth Sand (gas, 3055')	3025	- 3065
Total depth		3238
Plugged back to		2220
June, 1919, and operated as oil well in Big Injun Sand.		