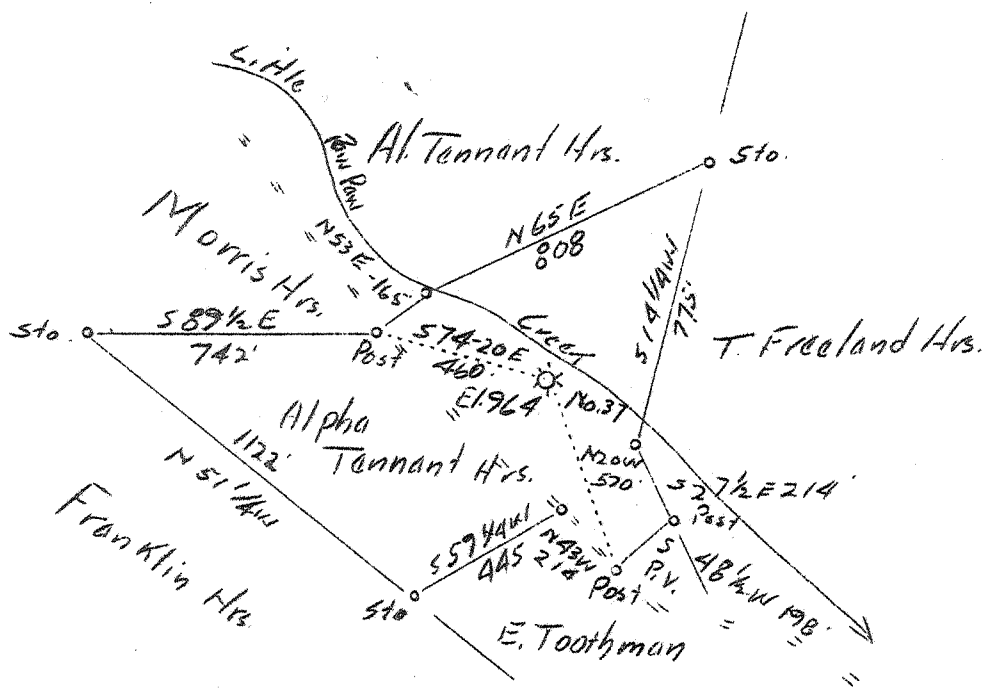


LATITUDE 39° 35'

LONGITUDE 80° 05'



4.03
2.23
1.80

4.1 W 4.03 W
0.38 Q 0.38 S

Abandonment

Company	The Owens Libbey-Owens Gas Dept.
Address	Box 1375, Charleston, W. Va.
Farm	Alpha Tennant Hrs.
Tract	Acres 21 Lease No. 118
Well (Farm) No.	1 Serial No. 37
Quadrangle	Blacksville (50)
County	Marion
District	Pawpaw
Engineer	T.S. Flournoy
Engineer's Registration No.	269
File No.	Drawing No.
Date	July 13, 1937 Scale 1"-500'

STATE OF WEST VIRGINIA
 Department of Mines
 OIL AND GAS DIVISION
 CHARLESTON

WELL LOCATION MAP

File No. MAR-172A

+ Denotes location of well on United States Topographic Maps, scale 1 to 62,500, latitude and longitude lines being represented by border lines as shown.

— Denotes one inch spaces on border line of original tracing.

172A

Paw Paw District, Marion County, W. Va.
 By Owens-Illinois Glass Co., Gas Dept., Box 1375, Charleston, W. Va.
 On 21 acres, on Little Paw Paw Creek.
 Elevation, 961' l.
 Surface owned by Alpha Tennant, Fairmont, W. Va., and oil and gas
 by Alpha Tennant heirs.
 Drilling commenced 9-22-22; completed, 12-11-22 (to 1743').
 Open flow, 40/10 % in 2"; volume, 286,000 cu. ft.
 Rock pressure, 110 lbs. in 24 hrs.
 Fresh water at 335'; salt water at 1200 and 1215'.
 1 1/2" casing, 56'; 8", 320'; 6", 1226'; 5", 1554'.
 Casing cemented: 8", 108'.
 Coal was encountered at 155-160 and 268-276'.
 NOTE: Tubing parted above the packer; tools lost below 2060'.
 Drilling deeper commenced Aug. 2, 1926; completed, Sept. 25, 1926.
 Shot Sept. 27, 1926.
 Open flow, 4/10 % in 2"; volume, 105,000 cu. ft.
 Rock pressure, 305 lbs. in 24 hrs.
 2" tubing, 2690'.
 6" x 2" packer, set at 2584'.
 Perf. top 2605'; perf. bot. 2604'.
 Gas well. Abandonment reported to Dept. of Mines July 8, 1937.

	Top.	Bottom.
Surface, gravel	0	17
Line	17	28
Quicksand	28	30
Line and slate	30	155
Mapletown (Sewickley) Coal	155	160
Line, slate, and shells	160	268
Pittsburgh Coal	268	276
Line and slate	276	330
Murphy Sand (water, 335'; 5 bailers per hour)	330	340
Line, slate, and red rock	340	660
Little Dunkard Sand	660	680
Line and slate	680	815
Big Dunkard Sand	815	850
Line and slate	850	920
Gas Sand	920	960
Line, slate, and shells	960	1033
1st Salt Sand	1033	1093
Break	1093	1105
Second Salt Sand (water, 1200', 6 bail- ers per hour; water, 1215', hole full)	1105	1312
Limestone	1312	1336
Marion Sand	1336	1365
Line	1365	1375
Red rock	1375	1380
Line	1380	1485
Little Line	1485	1500
Pencil Cave	1500	1506
Big Line	1506	1519
Break	1519	1524
Big Line	1524	1594
Big Injun Sand (gas, 1628-1629', 64,000 cu. ft.; gas, 1692-1697', 450,000 cu. ft.)	1594	1743
Total depth		1743

ALPHA RESERVE NO. 37 WELL (Continued).

	Top.	Bottom.
Depth of well when originally drilled		1743
Squaw Sand	1743	1780
Bernal Sand	1780	1860
Lime shells and slate	1860	2099
Centr. Sand (gas, 2142'; 46,000 cu. ft.; blew out)	2099	2162
Slate	2162	2176
20-Ft. Sand	2176	2253
Slate and shells	2253	2271
Red rock	2271	2280
20-Ft. Sand	2280	2325
Red rock and shells	2325	2377
Stray Sand	2377	2390
Slate and shells	2390	2455
Gordon Sand	2455	2472
Slate and shells	2472	2510
Hard sand	2510	2525
Red rock and shells	2525	2565
Fourth Sand	2565	2590
Slate and shells	2590	2643
Fifth Sand (gas, 2670')	2643	2678
Slate and shells	2678	2770
Total depth drilled		2770
Plugged back to		2687

WEST VIRGINIA DEPARTMENT OF MINES
OIL AND GAS DIVISION

786

WELL RECORD

Permit No. MAK-172-A

Oil or Gas Well Gas Well
(Kind)

Company Owens-Illinois Glass Company, Gas Dept.
 Address P. O. Box 1375, Charleston, W. Va.
 Farm Alpha Tennant Acres 21
 Location (waters) Little Paw Paw Creek
 Well No. 37 Elev. 964'
 District Paw Paw County Marion
 The surface of tract is owned in fee by Alpha Tennant
 Oil & Gas Address Fairmont, W. Va.
 Mineral rights are owned by Alpha Tennant heirs
 Address _____
 Drilling commenced 9-22-22
 Drilling completed 12-11-22
 Date shot _____ Depth of shot _____
 Open Flow 40 /10ths Water in _____ 2 Inch
 _____ /10ths Merc. in _____ Inch
 Volume _____ 286,000 Cu. Ft.
 Rock Pressure 110 lbs. 24 hrs.
 Oil _____ bbls., 1st 24 hrs.
 Fresh water 335 feet _____ feet
 Salt water 1200 feet 1215 feet

Casing and Tubing	Used in Drilling	Left in Well	Packers
Size			Kind of Packer
16			
13	56'	56'	
10			Size of
8 1/4	320'	320'	
6 5/8	1226'	1226'	Depth set
5 3/16	1554'	1554'	
3			Perf. top
2			Perf. bottom
Liners Used			Perf. top
			Perf. bottom

CASING CEMENTED 8 1/4" SIZE 108 No. FT. _____ Date _____
 COAL WAS ENCOUNTERED AT 155 FEET 60 INCHES
268 FEET 96 INCHES _____ FEET _____ INCHES
 _____ FEET _____ INCHES _____ FEET _____ INCHES

Formation	Color	Hard or Soft	Top	Bottom	Oil Gas or Water	Depth Found	Remarks
Surface, Gravel			0	17			
Lime			17	28			
Quick Sand			28	30			
Lime & Slate			30	155			
Mapletown Coal			155	160			
Lime, Slate & Shells			160	268			
Pittsburgh Coal			268	276			
Lime & Slate			276	330			
Murphy Sand			330	340	Water	335'	5 bail per hr.
Lime, Slate & Red Rock			340	660			
Little Dunkard Sand			660	680			
Lime & Slate			680	815			
Big Dunkard Sand			815	850			
Lime & Slate			850	920			
Gas Sand			920	960			
Lime, Slate & Shells			960	1033			
1st Salt Sand			1033	1093			
Break			1093	1105			
Second Salt Sand			1105	1312	Water	1200'	6 bail per hr.
Lime stone			1312	1336	"	1215	Hole full
Maxon Sand			1336	1365			
Lime			1365	1375			
Red Rock			1375	1380			
Lime			1380	1485			
Little Lime			1485	1500			
Pencil Cave			1500	1506			
Big Lime			1506	1519			
Break			1519	1524			
Big Lime			1524	1594			
Big Injun Sand			1594	1743	Gas	1628-1629'	64,000
					"	1692-1697'	450,000
Total depth				1743			



For drilling deeper see sheet #2

NOTE: TUBING PARTED ABOVE THE PACKER
Tools lost below 2060'

FEB 1938

WEST VIRGINIA DEPARTMENT OF MINES
OIL AND GAS DIVISION

286

WELL RECORD
OF

Permit No.

DRILLING DEEPER

Oil or Gas Well Gas Well
(Kind)

Company Owens-Illinois Glass Company, Gas Dept.
 Address P. O. Box 1375, Charleston, W. Va.
 Farm Alpha Tennant Acres 21
 Location (waters)
 Well No. 37 Elev. 964'
 District Jefferson County Jefferson
 The surface of tract is owned in fee by
 Address
 Mineral rights are owned by
 Address
 Drilling commenced August 2nd, 1926
 Drilling completed Sept. 25th, 1926
 Date shot 9-27-26 Depth of shot
 Open Flow 4 /10ths Water in 2 Inch
 /10ths Merc. in Inch
 Volume 105,000 Cu. Ft.
 Rock Pressure 305 lbs. 24 hrs.
 Oil bbls., 1st 24 hrs.
 Fresh water feet feet
 Salt water feet feet

Casing and Tubing	Used in Drilling	Left in Well	Packers
Size			
16			Kind of Packer
13			
10			Size of
8 1/4			<u>6 5/8" x 2"</u>
6 5/8			Depth set
5 3/16			<u>2584 ft.</u>
3			Perf. top <u>2665'</u>
2	<u>2690'</u>	<u>2690'</u>	Perf. bottom <u>2684'</u>
Liners Used			Perf. top
			Perf. bottom

CASING CEMENTED SIZE No. FT. Date
 COAL WAS ENCOUNTERED AT FEET INCHES
 FEET INCHES FEET INCHES
 FEET INCHES FEET INCHES

Formation	Color	Hard or Soft	Top	Bottom	Oil Gas or Water	Depth Found	Remarks
Depth of well when originally drilled				1743			
Squaw Sand			1743	1780			
Berea Sand			1780	1860			
Lime Shells and Slate			1860	2099			
Gantz Sand			2099	2162	Gas	2142'	48,000 blew out
Slate			2162	2176			
Fifty Foot Sand			2176	2253			
Slate & Shells			2253	2271			
Red Rock			2271	2280			
Thirty Foot Sand			2280	2325			
Red Rock & Shells			2325	2377			
Stray Sand			2377	2390			
Slate & Shells			2390	2455			
Gordon Sand			2455	2472			
Slate & Shells			2472	2510			
Hard Sand			2510	2525			
Red Rock & Shells			2525	2565			
Fourth Sand			2565	2590			
Slate & Shells			2590	2643			
Fifth Sand			2643	2678	Gas	2670'	
Slate & Shells			2678	2770			
Total depth drilled				2770			
Plugged back to				2687			

