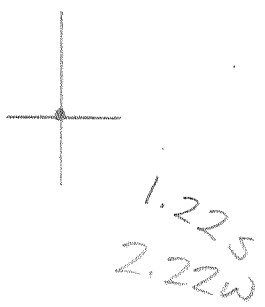


LATITUDE 39 37 30



LONGITUDE 80 12 30

7'5 OGIS topo location

7.5' loc \_\_\_\_\_ 15' loc \_\_\_\_\_  
 \_\_\_\_\_ (calc.) \_\_\_\_\_

Company \_\_\_\_\_

Farm DAVID JONES 9

Quad GRANT TOWN

County MARION

District PAW PAW

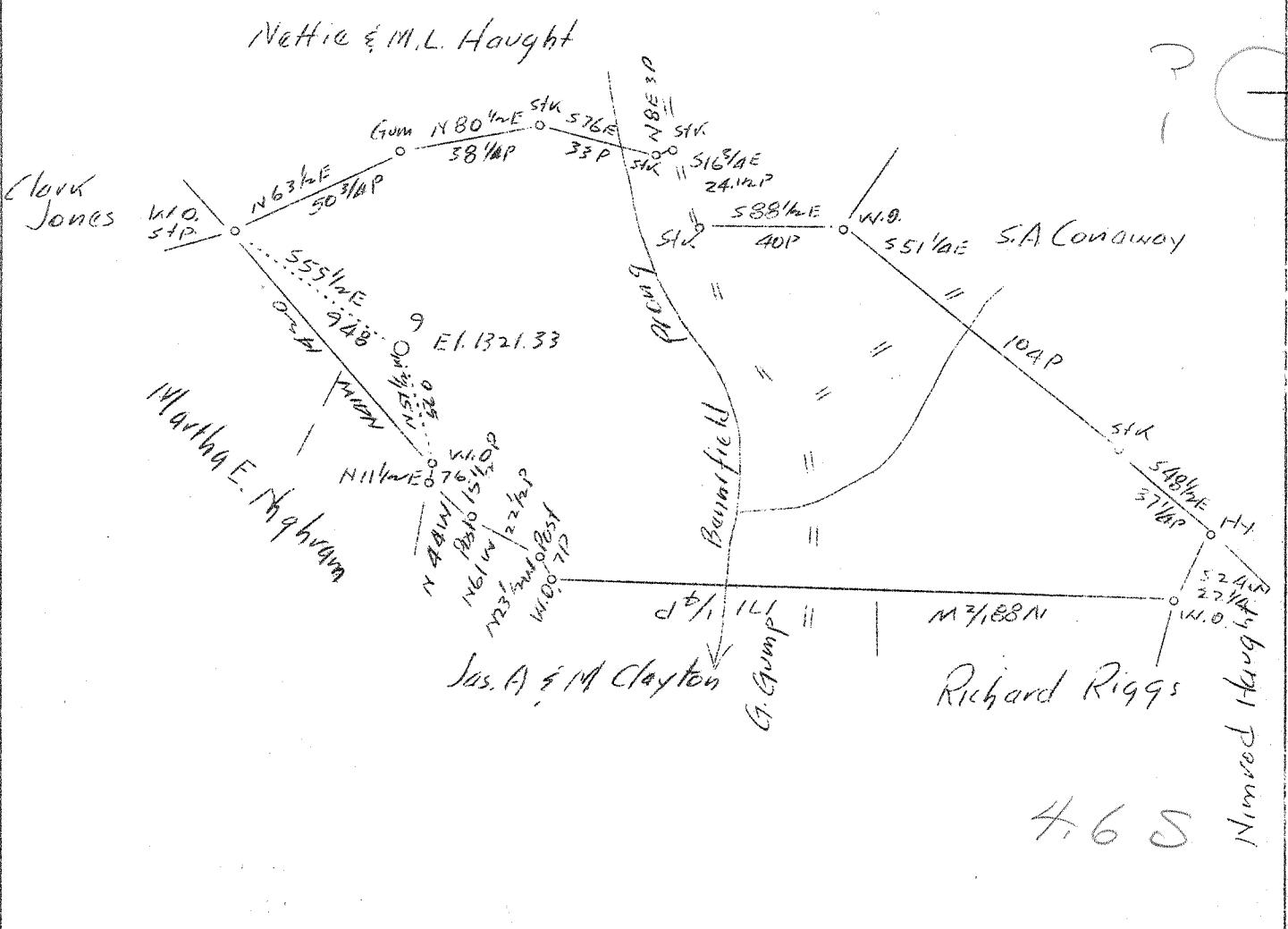
WELL LOCATION MAP

File No. 30786

0 1 2 3 LATITUDE 39° 40'

1 2 3 LONGITUDE 80° 15'

GRANT TOWN QUAD  
 where is the well G-21  
 exactly?  
 564870E 4384020N - 1000ft  
 304.8M



Abd.

Company	South Penn Oil Co.
Address	411 Seventh Ave., Pittsburgh, Pa.
Farm	David Jones
Tract	Acres 140 Lease No. 6902
Well (Farm) No.	9 Serial No.
Quadrangle	Blacksville W.C.
County	Marion
District	Paw Paw
Engineer	E.C. Tabler
Engineer's Registration No.	
File No.	Drawing No.
Date	Feb. 3, 1938 Scale 1"=800'

STATE OF WEST VIRGINIA  
 Department of Mines  
 OIL AND GAS DIVISION  
 CHARLESTON

WELL LOCATION MAP  
 File No. MAR-181A

+ Denotes location of well on United States Topographic Maps, scale 1 to 62,500, latitude and longitude lines being represented by border lines as shown.

— Denotes one inch spaces on border line of original tracing.