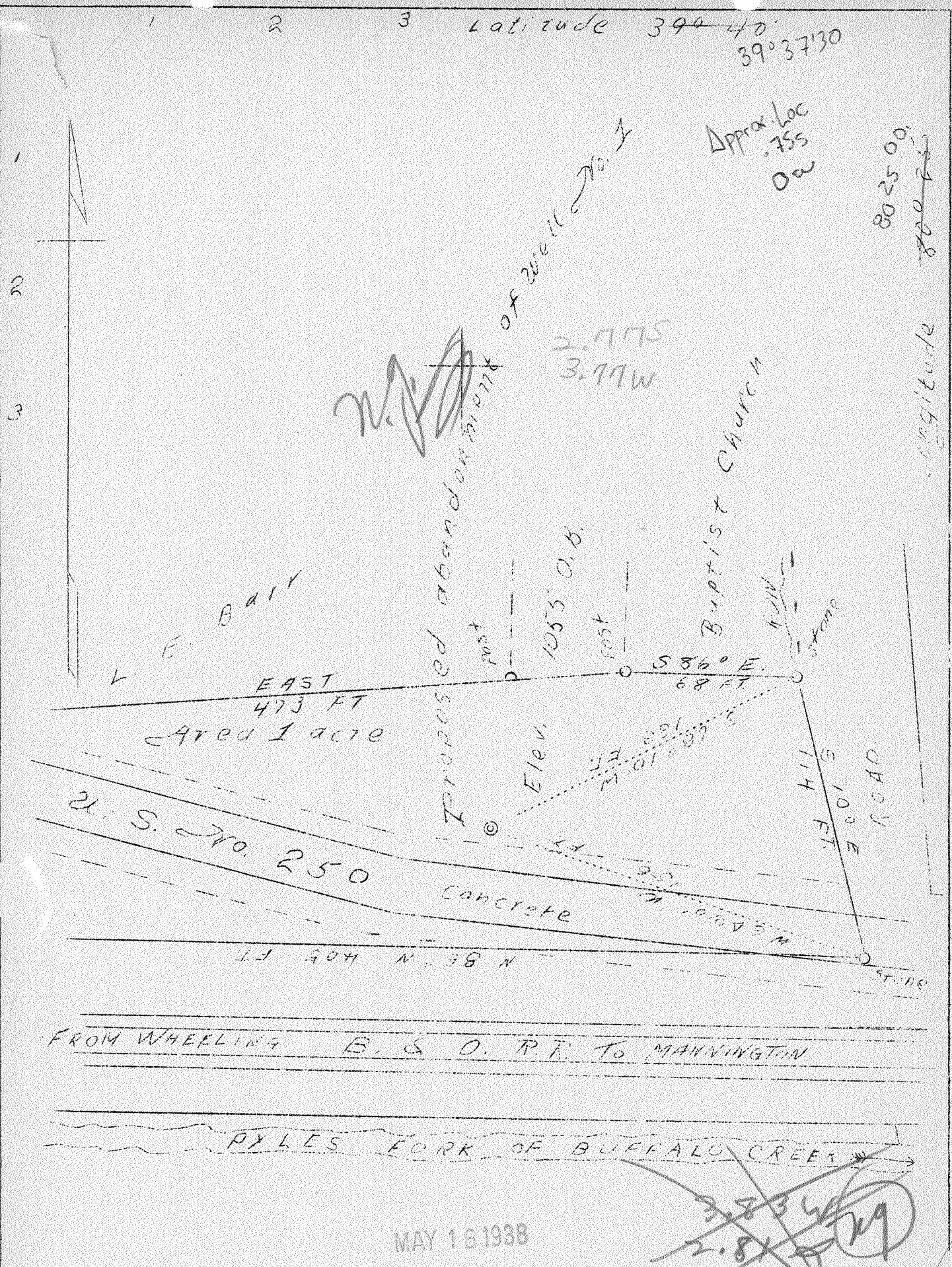


Latitude 39° 40' 37.30"



Company H.E. Milliken  
 Address Waynesburg, Pa.  
 Farm A.N. & Delia Morris Hrs.  
 Tract 1 Acres 1 Lease No. \_\_\_\_\_  
 Well (Farm) No. 1 Serial No. \_\_\_\_\_  
 (Abandonment) Elevation 1055' (O.B.)  
 Quadrangle Mannington  
 County Marion  
 District Mannington  
 Engineer David Wood  
 Engineer's Registration No. 233-16-5767  
 Date April 26, 1938  
 Scale 1" = 50'

STATE OF WEST VIRGINIA  
 Department of Mines  
 OIL AND GAS DIVISION  
 CHARLESTON

WELL LOCATION MAP  
 File No. MAR-190A

Denotes location of well on United States Topographic Maps, scale 1 to 62,500, latitude and longitude lines being represented by border lines as shown.

Denotes one inch spaces on border line of original tracing.