

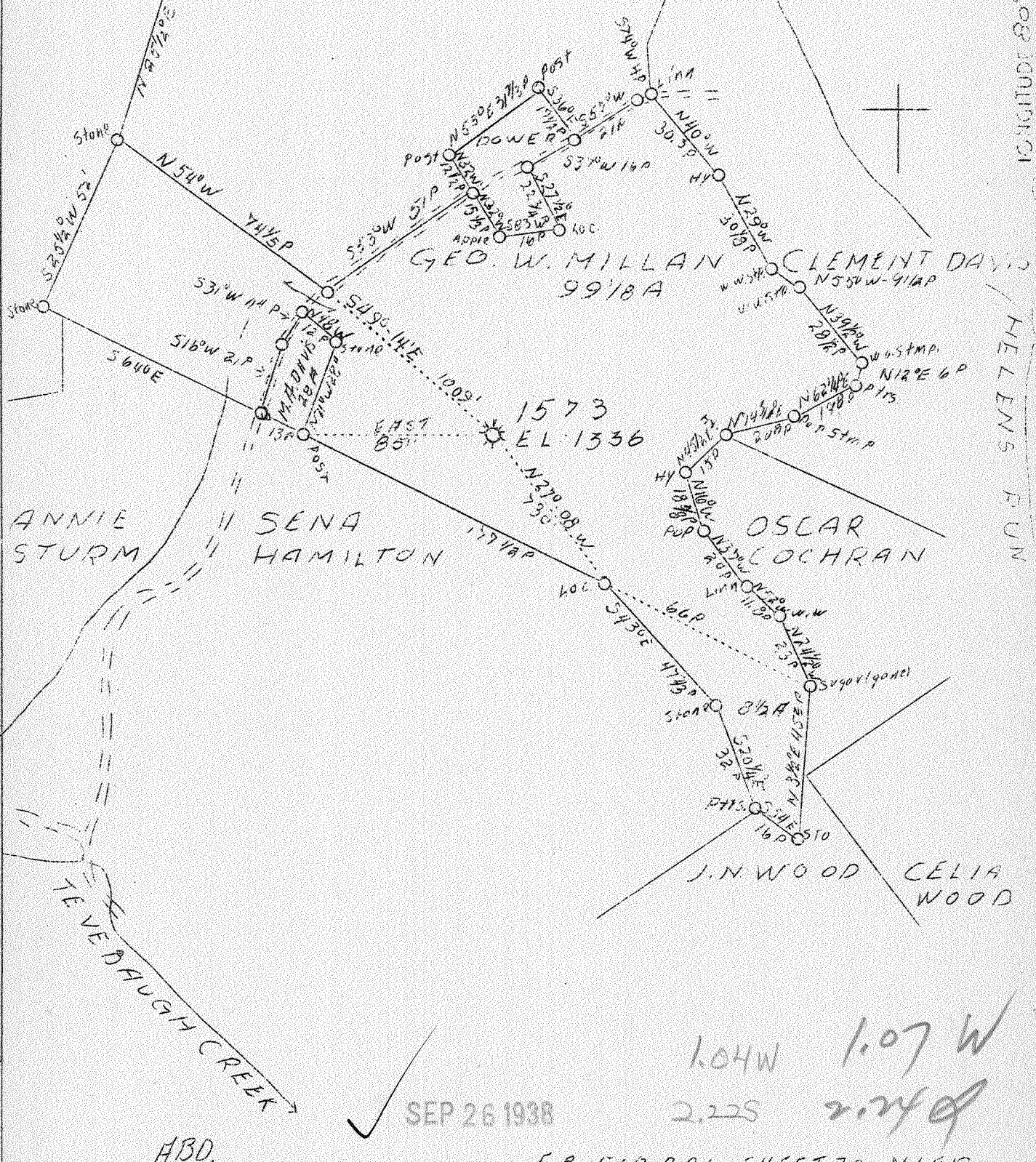
LATITUDE 39° 30'

LONGITUDE 80° 15'

L. H. MICHAEL

T. J. MILLAN 85A.

NANCY PRATT



SEP 26 1938

1.04W 1.07 W
2.22S 2.24 S

ABD.

F.B. 568.P 21 SHEET 30 N1E19

Company	Hope Natural Gas Co.
Address	Clarksburg, W. Va.
Farm	George W. Millan
Tract	1
Acres	110
Lease No.	957
Well (Farm) No.	One
Serial No.	1573
Elevation (SP)	1336
Quadrangle	Clarksburg
County	Marion
District	Lincoln
Engineer	W. M. Bowers
Eng. Reg. No.	900
Date	Sept. 20, 1938
Scale	1" - 40 poles

NE

STATE OF WEST VIRGINIA
 Department of Mines
 OIL & GAS DIVISION
 Charleston

WELL LOCATION MAP

File No. MAY-202-A

x Denotes location of well on U. S. Topographic Maps, scale 1 to 63,500, latitude and longitude lines being represented by border lines as shown.

- Denotes one inch spaces on border line of original tracing.

291

WEST VIRGINIA DEPARTMENT OF MINES
OIL AND GAS DIVISION

305

WELL RECORD

Ab
Permit No. 202-A

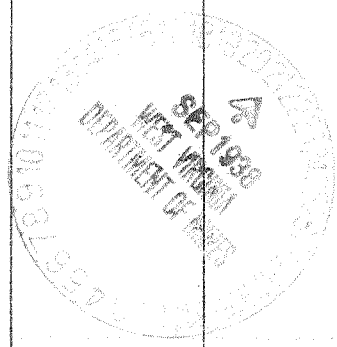
Gas
Oil or Gas Well (Kind)

Company Hope Natural Gas Company
Address Clarksburg, W. Va.
Farm George W. Millan Acres 110
Location (waters) Tevebaugh Creek
Well No. 1573 Elev. 1336
District Lincoln County Marion
The surface of tract is owned in fee by Bank of Farmington Farmington, W. Va.
Mineral rights are owned by
Drilling commenced 3-2-1910
Drilling completed 4-27-1910
Date shot 4-27-1910 Depth of shot 2961-2971
Open Flow /10ths Water in Inch
/10ths Merc. in Inch
Volume Cu. Ft.
Rock Pressure lbs. hrs.
Oil bbls., 1st 24 hrs.
Fresh water None recorded feet
Salt water 1528 -1600 feet

Casing and Tubing	Used in Drilling	Left in Well	Packers
Size			
16			Kind of Packer
13			
10	658	658	Size of
8 1/4	1573	1573	
6 5/8	1920	1920	Depth set
5 3/16	2773	2773	
3			Perf. top
2	3055	Pulled	Perf. bottom
Liners Used			Perf. top
			Perf. bottom

CASING CEMENTED SIZE No. FT. Date
10" casing cemented from 653 to 15'
COAL WAS ENCOUNTERED AT 210 FEET 48 INCHES
617 FEET 96 INCHES FEET INCHES
FEET INCHES FEET INCHES

Formation	Color	Hard or Soft	Top	Bottom	Oil Gas or Water	Depth Found	Remarks
Native Coal			210	214			
Pittsburgh Coal			617	625			
Little Dunkard Sand			1030	1045			
Big Dunkard Sand			1090	1150			
Gas Sand			1370	1400			
First Salt Sand			1470	1498			
Second Salt Sand			1510	1650	Water	1528 1600	Salt
Little Lime			1887	1897			
Pencil Cave			1897	1910			
Big Lime			1910	1985			
Big Injun Sand			1985	2085			
Squaw Sand			2170	2205			
Gantz Sand			2440	2495			
Fifty Foot Sand			2510	2585			
Thirty Foot Sand			2605	2670			
Gordon Stray Sand			2766	2805			
Gordon Sand			2825	2833			
Fourth Sand			2890	2910			
Fifth Sand			2961	2993			
Total Depth				3040	Gas	2961-2961	



NOV 13 1930